

# CALIFORNIA JEWELS

Tuesday September 12, 2017

Los Angeles



# Bonhams



# CALIFORNIA JEWELS

Tuesday September 12 2017 at 10am

Los Angeles

## BONHAMS

7601 West Sunset Blvd,  
Los Angeles, CA 90046

[bonhams.com](http://bonhams.com)

## PREVIEW

### New York

Wednesday September 6  
10am to 5pm (Appointment Only)

Thursday September 7  
10am to 5pm (Appointment Only)

### Los Angeles

Friday September 8

2pm to 5pm

Saturday September 9

12pm to 5pm

Sunday September 10

12pm to 5pm

Monday September 11

12pm to 5pm

## SALE NUMBER:

24180

## CATALOG:

\$35.00

## ILLUSTRATIONS

Front cover: Lot 137

Inside front cover: Lot 340

Inside back cover: Lots 58

Back cover: Lot 372

## BIDS

+1 (323) 850 7500

+1 (323) 850 6090 fax

Email: [bids.us@bonhams.com](mailto:bids.us@bonhams.com)

To bid via the internet please visit  
[www.bonhams.com](http://www.bonhams.com)

## TELEPHONE BIDDING

Bidding by telephone will only be  
accepted on a lot with a lower  
estimate in excess of \$1000.

Please note that bids should be  
submitted no later than 4pm on  
the day prior to the sale. New  
bidders must also provide proof  
of identity when submitting bids.  
Failure to do this may result in  
your bid not being processed.

## Live online bidding is available for this sale

Please email [bids@bonhams.com](mailto:bids@bonhams.com)  
with 'live bidding' in the subject  
line 48 hours before the auction  
to register for this service.

## INQUIRIES

Matthew Girling, FGA  
Group Jewelry Director  
+44 20 7468 8278  
[matthew.girling@bonhams.com](mailto:matthew.girling@bonhams.com)

Susan Abeles  
Director, US Jewelry  
+1 (212) 461 6525  
[susan.abeles@bonhams.com](mailto:susan.abeles@bonhams.com)

### Los Angeles:

Dana Ehrman, GG  
Director, LA Jewelry  
Alexis Vourvoulis, GG  
Kelly Sitek, GG  
+1 (323) 436 5424

### San Francisco:

Shannon Beck, GG  
+1 (415) 503 3306

## CLIENT SERVICES

Monday to Friday 9am-5pm  
+1 (323) 850 7500  
+1 (323) 850 6090 Fax

Please see pages 79 to 81 for  
bidder information including  
Conditions of Sale, after-sale  
collection and shipment.

Please note that irrespective  
of origin, jadeite and rubies  
(and any jewelry pieces  
that contain them) may  
now be imported into the  
United States.

## Bonhams

220 San Bruno Avenue  
San Francisco, California 94103  
© 2017, Bonhams & Butterfields  
Auctioneers Corp.; All rights reserved.  
Bond No. 57BSBGL0808

## IMPORTANT NAMES & NOTICES

### DIAMONDS, COLORED STONES & PEARLS

The Jewelry department of Bonhams & Butterfields recognizes that there are many various forms of treatments and enhancements used in diamonds and colored stones in order to improve their appearance and or color. Techniques such as heat treatment have been used to improve the color and transparency of both sapphires and rubies in addition to other gemstones. Techniques such as oiling have been used to enhance the clarity of emeralds while dyeing has been used to effect the color of jade. Techniques such as heat treatment, oiling, resin impregnation, irradiation, color diffusion, dyeing, fracture filling, and HTHP are just a few off the techniques that are in use today. Prospective buyers are therefore reminded that unless otherwise noted in our catalog description it must be assumed that some form of enhancement may have been used and that such treatment may not always be permanent or detectable and that our estimates have taken such possibilities into account. As a matter of policy, Bonhams & Butterfields endeavors to obtain certificates from recognized gemological laboratories when such certificates are deemed crucial to the authenticity of a gemstone. It is not possible however to gain certificates for all items offered for sale and it is therefore recommended where there is no mention of a certificate that all prospective buyers consult with one of our department specialists prior to purchase of such items.

PLEASE NOTE: A number of laboratories issue certificates that give more detailed descriptions of gemstones, however there may not be consensus between different laboratories on the degrees, or types of treatment for any particular gemstone. Neither is there necessarily consensus between different laboratories, or private appraisers, on the grading of diamonds. All gemstone weights are approximations only and although an independent laboratory grading may be used in the catalog text, we cannot guarantee such gradings.

Images shown may appear smaller or larger than actual size.

Although we endeavor to mention in our descriptions significant defects, needed repairs, absent stones and the like, **WE DO NOT GUARANTEE THAT THE DESCRIPTIONS ARE COMPREHENSIVE.** Please examine all lots carefully. It is the responsibility of the prospective bidder, or his agent, to determine the condition of lots during the preview. Condition reports have been created for most lots in this auction, and are available upon request. Please contact the Jewelry department at least two days prior to the sale date for additional information.

It is the responsibility of the buyer to investigate any applicable restrictions on purchased property and to obtain any export or import licenses and/or certificates as well as any other required documentation before shipping. The buyer's inability to export or import any such items or to do so timely shall not serve as the basis for any cancellation or rescission of the sale or any delay in payment. Prospective buyers who are uncertain as to whether a lot is subject to these restrictions or any other restrictions on importation or exportation are advised to consult with the specialist department in which the property is offered.

### REGULATED SPECIES MATERIALS AND CITES PERMITS

The export of a lot from the United States or import into certain countries may be subject to export or import regulations, licensure and/or other restrictions; in particular, lots containing plant or animal materials such as ivory, rhinoceros horn, tortoiseshell, coral, whalebone or certain types of woods, irrespective of age or value, may require the granting of one or more export or import licenses or certificates, or may be banned from import altogether by some countries. Moreover, the ability to obtain an export license or certificate does not insure the ability to obtain an import license or certificate in another country. Lots that contain such regulated species materials may also not be eligible for exportation or for re-importation into the United States if they are not at least 100 years of age, and, under current law, lots containing African Elephant Ivory may no longer be re-imported into the United States regardless of age. In addition, resales of lots containing certain regulated species materials may be subject to restrictions in some jurisdictions.

Lots noted in the catalog with a **Y** next to the lot number contain one or more such regulated plant or animal materials. **It is the buyer's responsibility to investigate any such restrictions and to obtain any relevant export or import licenses. Please note that this process is governed by local authorities and may take considerable time. Regardless of any delay in the obtaining of an export or import license or certificate or denial of a license's or certificate's issuance, purchased lots shall be paid for in accordance with the Conditions of Sale, and any such delay or denial shall not serve as the basis for cancellation of any sale.** Prospective buyers are advised to obtain information from the relevant regulatory authorities regarding export and import restrictions, requirements, and costs prior to bidding.

Prospective buyers should also check with their local (e.g. state) regulatory authorities regarding any local restrictions and/or permit requirements that may apply with respect to purchases of regulated species materials, including without limitation purchases of items containing elephant ivory or rhino horn. For example, we are advised that New York buyers of any lot containing elephant or mammoth ivory or rhino horn will be responsible for obtaining a New York State permit before taking possession of the lot within New York State, and that the State of New Jersey has banned the import of items containing elephant or marine mammal ivory or rhino horn into that state.

Upon request, Bonhams can refer the purchaser to a third party agent to assist the purchaser in attempting to obtain the appropriate licenses and/or certificates. However, there is no assurance that any necessary licenses or certificates can be obtained. Please contact the Specialist Department for a suggested list of shipping agents prior to placing a bid if you are uncertain as to whether a lot is subject to export/import license or certificate requirements or related restrictions.

### WATCHES

Although we endeavor to mention in our descriptions significant defects, needed repairs, absent stones and the like, **WE DO NOT GUARANTEE THAT THE DESCRIPTIONS ARE COMPREHENSIVE.** Please examine all watches carefully. It is the responsibility of the prospective bidder, or his agent, to determine the condition of watches during the preview. Except as expressly set forth in the Conditions of Sale, all watches are sold "as is". We do not guarantee the accuracy or operation of any watch function such as timekeeping, chronograph, calendar, repeater or register.

We make no judgments as to whether diamond dials or diamond bezels originated at the factory or are later additions.

**INDEX**

**INCLUDING PROPERTY FROM**

<u>NAME</u>	<u>LOT NUMBER</u>	
Angela Cummings for Tiffany & Co. ....	15	A Texas Lady
Baume & Mercier .....	365	A Private Texas Collection
Boucheron .....	298, 192	A New York Collector
Mauboussin .....	192	A Private Collection of Chicago
Buccellati .....	11, 65, 193	The Joyce B. Doheny Trust
Bueche-Girod .....	338	The Collection of Claes Nobel, Oregon
Bulgari .....	14, 56, 263, 325	A Maryland Collection
Cartier .....	1, 23, 154, 168, 169, 232, 278, 327, 340	An International Collection
Cellino .....	50, 52, 53	From the Estate of Jerome H. Louchheim Jr.
Chopard .....	30	Private Collection, Washington D.C.
Cresaux .....	21	Property of a Lady
David Webb .....	314, 339	An Oregon Estate
Donald Claflin for Tiffany & Co. ....	120	A New York Collector
Elizabeth Taylor Collection .....	250	A Private Oregon Collection
Franck Muller .....	125	A New York Collector
Gioia .....	285	A Virginia Lady
Girard-Perregaux .....	228	A Napa, CA Collector
Grosse .....	166	
H. Stern .....	57	
Hamilton .....	355	
Hermès .....	22	
J.E. Caldwell .....	359	
Judith Ripka .....	389	
La Triomphe .....	197	
Marco Bicego .....	244	
Marcus & Co. ....	229, 274	
Mikimoto .....	148	
Nardi .....	12	
Oscar Heyman .....	330	
Paloma Picasso for Tiffany & Co. ....	341	
Piaget .....	24, 111	
Rachel Epstein for Carvin French .....	230	
Raymond Yard .....	118	
Rolex .....	16	
Ruser .....	3, 180	
Thomas Cooper .....	119, 122	
Tiffany & Co. ....	1, 6, 13, 49, 54, 104, 114, 162, 164, 165, 184, 232, 254, 264, 294, 335	
Trio .....	167	
Valentin Magro .....	51, 366	
Van Cleef & Arpels .....	19, 20, 88	
Walton & Co. ....	96	
Winston .....	333	



**PROPERTY FROM THE ESTATE OF JEROME H. LOUCHHEIM JR.**

**1**  
**A 14K GOLD HORSE MONEY CLIP, TOGETHER WITH A STERLING SILVER BRACELET, CARTIER AND TIFFANY & CO.**  
*money clip signed Cartier, bracelet signed T&Co.; bracelet length: 7 3/4in., money clip measurements: 1 3/4 x 1 5/8in.*

US\$800 - 1,200

**2**  
**A CULTURED PEARL, SAPPHIRE AND WHITE GOLD TRIPLE STRAND NECKLACE**  
*three strands of pearls approximately 7.0mm to 6.5mm; length: from 14in. to 15 1/2in.*

US\$1,000 - 2,000

**3**  
**A CULTURED PEARL AND 18K GOLD BRACELET, RUSER**  
*signed Ruser; gross weight approximately: 80 grams; length: 6 3/4in.*

US\$3,000 - 5,000

**4**  
**A DIAMOND AND GOLD RING**  
*pear brilliant-cut diamond approximately 1.35cts; size: 7*  
**US\$1,000 - 2,000**

**PROPERTY OF VARIOUS OWNERS**

**5**  
**A SAPPHIRE, DIAMOND AND 18K GOLD RING**  
*set with rectangular-cut sapphires; with French import mark; size: 5 3/4*  
**US\$1,200 - 1,800**

**6**  
**A DIAMOND AND 18K GOLD FLOWER BROOCH, TIFFANY & CO.**  
*flower bouquet set with round brilliant-cut diamond pistils; signed Tiffany & Co.; dimensions: 2 x 1 3/8in.*  
**US\$1,500 - 2,000**

**7**  
**A PAIR OF CULTURED PEARL, DIAMOND AND PLATINUM NECKLACES**  
*pearls averaging approximately 9.8mm to 9.4mm and 9.4mm to 9.0mm; estimated total diamond weight: 4.80cts; lengths: 18in.*  
**US\$2,200 - 2,800**

**8**  
**A RETRO DIAMOND AND 18K GOLD NECKLACE**  
*estimated total diamond weight: 0.95ct; weighing approximately: 104 grams; length: 17 1/4in.*  
**US\$5,000 - 7,000**

**9**  
**A DIAMOND AND PLATINUM RING**  
*estimated total diamond weight: 4.10cts; size: 6*  
**US\$3,000 - 5,000**



7

8

9

10

11

12

10  
**A DIAMOND AND GOLD RING**  
center round brilliant-cut diamond weighing:  
3.09cts; *estimated total remaining diamond*  
*weight: 1.00ct; size: 8*

US\$7,000 - 9,000

11  
**A YELLOW SAPPHIRE, DIAMOND AND  
18K GOLD RING, BUCCELLATI**  
cushion mixed-cut sapphire approximately:  
9.2 x 5.8 x 6.2mm; *signed Buccellati; size: 6*  
*1/4, with inner sizing spring*

US\$4,000 - 6,000

12  
**A GEM-SET, CULTURED PEARL, BLACK  
ONYX AND 18K GOLD BLACKAMOOR  
CLIP BROOCH, NARDI**  
*signed Nardi; dimensions: 2 3/8 x 1 1/2in.*

US\$3,000 - 5,000



14

15

16

17

13

18

13  
**A DIAMOND AND 18K GOLD RING AND HEART MOTIF BLACK CORD PENDANT/NECKLACE, TIFFANY & CO.**

*ring signed Tiffany & Co. 1993; pendant signed Paloma Picasso, Tiffany & Co. 1983; ring size: 5 1/2; pendant length: 1in., cord length adjustable*

**US\$1,000 - 1,500**

14  
**AN 18K GOLD LINK BRACELET, BVLGARI**

*signed Bvlgari, with signed pouch; weighing approximately: 90 grams; length: 7 1/2in.*

**US\$2,000 - 3,000**

15  
**A PAIR OF 18K GOLD AND BLACK ONYX INLAY CHECKERBOARD EAR CLIPS, ANGELA CUMMINGS FOR TIFFANY & CO., 1982**

*signed T&Co.; length: 3/4in.*

**US\$1,000 - 1,500**

**PROPERTY OF AN INTERNATIONAL COLLECTION**

16  
**A LADY'S 18K GOLD AUTOMATIC DATEJUST WRISTWATCH, ROLEX, CIRCA 1981**

*Ref 6917, Serial No. 7048808, 28-jewel Cal.2030 movement, baton hour markers, Oyster case, President bracelet with deployant clasp; case, dial, and movement signed; diameter: 26mm; length: 6 1/4in.*

**US\$3,000 - 5,000**

**PROPERTY OF VARIOUS OWNERS**

17  
**A DIAMOND AND 14K GOLD RING**

*oval brilliant-cut diamond weighing 1.20cts; size: 10*

**US\$2,500 - 3,500**

*GIA report #11204208, dated July 24, 2000, stating: H color, VS1 clarity*

18  
**A FIRE OPAL, DIAMOND AND 18K GOLD RING**

*pear-shaped cabochon fire opal weighing 3.07cts; estimated total diamond weight: 0.80ct; size: 6 3/4*

**US\$3,000 - 5,000**





19



20



21



22



23



24

**PROPERTY FROM A NEW YORK COLLECTOR**

**19  
A DIAMOND AND 18K GOLD RING, VAN CLEEF & ARPELS, PARIS**

*signed VCA Paris, no. NY5K906-1, with French assay marks; size: 6 1/2*

**US\$2,000 - 3,000**

**20  
A DIAMOND AND 18K GOLD STAR PENDANT AND CHAIN**

*signed VCA NY, no. 16V681-6 KW 115541 (marks for both Van Cleef & Arpels and Kurt Wayne); estimated total diamond weight: 1.75cts; length: 16 1/4in.*

**US\$4,000 - 6,000**

**PROPERTY OF VARIOUS OWNERS**

**21  
A 14K GOLD INTEGRAL BRACELET WRISTWATCH, CRESAUX**

*square case, white dial with Roman numerals; 17-jewel mechanical movement; case, dial and movement signed; gross weight approximately: 54 grams; case: 22 x 22mm; length: 7 1/8in.*

**US\$1,000 - 1,500**

**22  
AN 18K GOLD PENDANT WITH CHAIN, HERMÈS**

*pendant signed Hermès, no. 95861, with French assay mark; length: 21in.*

**US\$1,200 - 1,800**

**23  
A PAIR OF DIAMOND AND 18K GOLD EAR CLIPS, CARTIER, FRENCH**

*signed Cartier, Inc., with French assay marks; estimated total diamond weight: 1.50cts; length: 1 1/4in.*

**US\$2,500 - 3,500**

**24 Y  
A CORAL, CULTURED PEARL, BLACK ONYX, AND 18K GOLD NECKLACE, PIAGET, FRENCH**

*coral beads approximately 12.1mm to 10.5mm, pearls approximately 7.3mm to 6.9mm; signed Piaget, with French assay marks; gross weight approximately: 146 grams; length: 42in.*

**US\$1,800 - 2,500**



25



26



30



27



29

28



25  
**A DIAMOND, RUBY AND 18K GOLD PANTHER BANGLE BRACELET**  
*estimated total diamond weight: 3.20cts; gross weight approximately: 40 grams; diameter: 2 1/4in.*

**US\$2,500 - 3,500**

26  
**A RUBY, DIAMOND AND 18K ROSE GOLD SPIDER BROOCH**  
*cushion-shaped ruby weighing 2.97cts; estimated total diamond weight: 0.95ct; length: 1 1/8in.*

**US\$5,000 - 8,000**

GRS report #GRS2010-122235, dated December 28, 2010, stating the ruby as: Tanzania origin, no indication of thermal treatment.

27  
**A DIAMOND, RUBY, EMERALD AND 18K GOLD PANTHER RING**  
*with ruby and sapphire accents; estimated total diamond weight: 1.35cts; size: 7*

**US\$1,500 - 2,000**

28  
**A CABOCHON RUBY, DIAMOND AND 18K GOLD CURB LINK NECKLACE**  
*four oval-shaped cabochon rubies averaging 9.9 x 8.0 x 4.5mm; estimated total diamond weight: 3.20cts; gross weight approximately: 214 grams; length: 32in.*

**US\$7,000 - 9,000**

29  
**A PAIR OF RUBY, DIAMOND AND 18K GOLD HOOP EARRINGS**  
*estimated total diamond weight: 0.90ct; length: 5/8in.*

**US\$1,000 - 1,500**

30  
**A LADY'S 18K GOLD AND DIAMOND BRACELET WRISTWATCH, CHOPARD**  
*quartz movement; dial, case, and bracelet signed; no. 5529, GD14057; accompanied by signed box; case: 25 x 25mm; length: 6in.*

**US\$3,000 - 5,000**



31



32



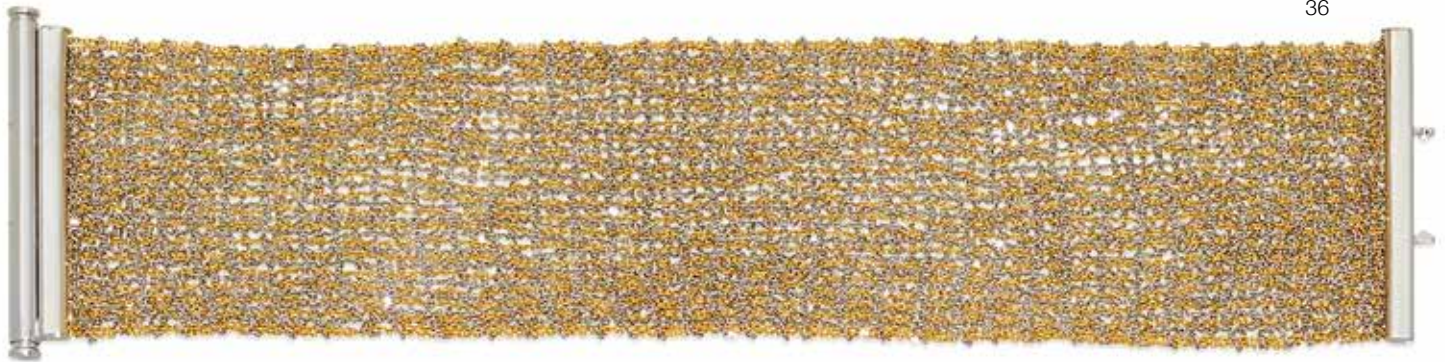
34



33



35



36

**31  
A FANCY COLORED DIAMOND AND 18K BI-COLOR GOLD LONG CHAIN**

vari-cut natural fancy light yellow, yellow and intense yellow diamonds, weighing in total: 9.23cts; length: 60in.

**US\$5,500 - 6,500**

Please see department for eight accompanying GIA reports

**32  
A COLORED DIAMOND, DIAMOND AND 18K BI-COLOR GOLD RING**

estimated total diamond weight: 1.15cts; size: 4 1/4 (colored diamonds untested for origin of color)

**US\$800 - 1,200**

**33  
A PAIR OF COLORED DIAMOND, DIAMOND AND 18K WHITE GOLD PENDANT EARRINGS**

two cushion-cut yellow diamonds total weight: 1.55cts; estimated remaining diamond weight: 0.60ct; length: 7/8in. (colored diamonds untested for origin of color)

**US\$3,000 - 5,000**

**34  
A DIAMOND AND BI-COLOR GOLD RING**

round brilliant-cut diamond approximately:

1.50cts; size: 6

**US\$4,000 - 6,000**

**35  
A DIAMOND AND 14K GOLD BANGLE BRACELET**

estimated total diamond weight: 5.05cts; gross weight approximately: 75 grams; diameter: 2 1/8in.

**US\$4,500 - 5,500**

**36  
AN 18K BI-COLOR GOLD MESH BRACELET**

weighing approximately: 48 grams; length: 7 1/8in., width: 1 5/8in.

**US\$1,500 - 2,500**



37

**37  
A TOURMALINE, DIAMOND, COLORED  
DIAMOND AND 18K WHITE GOLD  
NECKLACE**

central shield-shaped carved tourmaline approximately 70 x 40 x 5.3mm, with brown diamond bead terminations on tassels; *estimated total diamond weight: 1.95cts (exclusive of beads); gross weight approximately: 70 grams; length: 18 1/2in. (brown diamonds untested for origin of color)*

**US\$4,500 - 5,500**



38

**38  
A DIAMOND AND 18K WHITE GOLD  
ETERNITY BAND**

*estimated total diamond weight: 5.25cts; size 7*

**US\$2,800 - 3,500**



39

**39  
A DIAMOND AND 18K WHITE GOLD  
RING**

*estimated total diamond weight: 1.40cts; size 6 1/2*

**US\$1,000 - 1,500**



40

**40  
A COLORED CULTURED PEARL,  
DIAMOND AND 18K WHITE GOLD  
NECKLACE**

*graduating from 13.8mm to 11.1mm; length: 17 3/4in. (pearls not tested for origin of color)*

**US\$2,500 - 3,500**



41

**41  
A PAIR OF DIAMOND AND 18K WHITE  
GOLD CIRCULAR DROP EARRINGS**

*estimated total diamond weight: 3.55cts; length: 2 5/8in.*

**US\$4,000 - 6,000**



42

**42  
A TOURMALINE, JADEITE JADE,  
COLORED GEMSTONE AND 14K GOLD  
BROOCH**

*pink tourmaline half-barrel cabochon approximately: 12 x 11.8 x 7.2mm; length: 2 1/8in.*

**US\$800 - 1,200**



43



44



45



47



46



48

**43  
A DIAMOND AND 18K WHITE GOLD NECKLACE**

*estimated total diamond weight: 4.05cts; gross weight approximately: 33 grams; length: 16in.*

**US\$2,800 - 3,500**

**44  
A DIAMOND, COLORED DIAMOND AND 18K WHITE GOLD BUTTERFLY PENDANT**

*estimated total diamond weight: 4.85cts; length: 1 3/4in. (colored diamonds untested for origin of color)*

**US\$1,500 - 2,500**

**45  
A CARVED TOURMALINE, DIAMOND, GEM-SET AND BI-COLOR GOLD PENDANT**

*carved tourmaline approximately: 30 x 24.3mm; length: 2 1/2in.*

**US\$1,000 - 1,500**

**46  
A DIAMOND, FANCY COLORED DIAMOND AND 18K BI-COLOR GOLD RING**

*featuring a half-moon brilliant-cut Fancy Brownish Purple-Pink diamond: 0.44ct, opposite a half-moon brilliant-cut diamond: 0.43ct; estimated remaining total diamond weight: 0.30ct; size: 7*

**US\$4,500 - 5,500**

GIA report #1176690807, dated October 26, 2007, stating the diamond as: Natural, Fancy Brownish Purple-Pink color, SI2 clarity

**47  
A PINK SAPPHIRE, DIAMOND AND 18K WHITE GOLD RING**

*oval mixed-cut pink sapphire weighing approximately 2.09cts; estimated total diamond weight: 1.75cts; size: 6 1/2*

**US\$2,000 - 3,000**

**48  
A MULTI-COLORED TOURMALINE, DIAMOND AND 14K WHITE GOLD BANGLE BRACELET**

*gross weight approximately: 37 grams; diameter: 3 1/2in.*

**US\$1,000 - 1,500**



49

50

51

52

53



55



56



57



54

**PROPERTY OF ANOTHER OWNER**

51  
**A PAIR OF RHODOCHROSITE, DIAMOND AND 18K WHITE GOLD EAR CLIPS, VALENTIN MAGRO**

*signed Valentin Magro; gross weight approximately: 36 grams; length: 1in.*

US\$1,500 - 2,000

**PROPERTY OF A NEW YORK COLLECTOR**

52  
**AN 18K GOLD, DIAMOND, RUBY AND EMERALD SNAKE BRACELET, CELLINO**

*signed Cellino; gross weight approximately: 79 grams; diameter: 2 7/16in.*

US\$1,500 - 2,500

53  
**A DIAMOND AND 18K GOLD BRACELET AND RING SET, CELLINO**

*signed Cellino; estimated total diamond weight: 2.40cts; gross weight approximately: 63 grams; diameter: 2 3/8in.; ring size: 5 3/4*

US\$2,000 - 3,000

**PROPERTY OF VARIOUS OWNERS**

54  
**A DIAMOND AND 18K GOLD BOW BROOCH, TIFFANY & CO., 1985**

*signed Tiffany & Co., 1985; dimensions: 2 1/8 x 1in.*

US\$1,500 - 2,000

**PROPERTY OF A NEW YORK COLLECTOR**

55  
**A DIAMOND AND PLATINUM HEART PENDANT AND CHAIN**

*estimated total diamond weight: 2.70cts; length: 16in.*

US\$2,000 - 3,000

56  
**A PAIR OF DIAMOND AND 18K GOLD EAR CLIPS, BULGARI**

*signed Bvlgari 800; estimated total diamond weight: 2.00cts; gross weight approximately: 25 grams; length: 1in.*

US\$2,000 - 3,000

57  
**A CITRINE, DIAMOND, 18K GOLD AND PLATINUM JEWELRY SUITE, H. STERN**

*comprising a bracelet, ring and pair of earrings; makers mark for Stern; estimated total diamond weight: 5.50cts; gross weight approximately: 71 grams; bracelet length: 7in., earring length: 2 1/4in., ring size: 5 1/4 with inner sizing spring*

US\$5,000 - 7,000

49  
**A PAIR OF TIGER'S EYE QUARTZ AND 18K GOLD CUFFLINKS, TIFFANY & CO.**

*signed Tiffany & Co.; accompanied by a signed box; measuring: 7/8 x 3/8in.*

US\$1,000 - 2,000

**PROPERTY OF A NEW YORK COLLECTOR**

50  
**A SUITE OF TIGER'S EYE QUARTZ, DIAMOND, 18K AND 14K GOLD JEWELRY, CELLINO**

*comprising a necklace, ring, bracelet and pair of doorknocker earrings; all signed Cellino; necklace length: 27 1/2in., bracelet length: 8 5/8in., earring length: 2in., ring size: 6*

US\$3,000 - 5,000



58



59



60



61

**PROPERTY OF VARIOUS OWNERS**

**58  
AN ANTIQUE SUITE OF GARNET,  
TURQUOISE AND GOLD JEWELRY,  
CIRCA 1880**

comprising a necklace, brooch and earrings;  
gross weight approximately: 86 grams;  
necklace length: 16in., brooch: 1 3/4in.;  
earrings: 1 3/4in.

US\$1,000 - 1,500

**59  
AN ANTIQUE DIAMOND AND SILVER-  
TOPPED GOLD CLUSTER BROOCH**  
*estimated total diamond weight: 6.00cts;  
weighing approximately: 35 grams; diameter:  
1 7/8in.*

US\$1,000 - 1,500

**60  
A COLORED DIAMOND, SAPPHIRE AND  
18K ROSE GOLD RING**  
*central round brilliant-cut black diamond  
weight approximately: 12.50cts; size: 6  
(diamond untested for origin of color)*

US\$3,000 - 5,000

**61  
AN ANTIQUE DIAMOND, SILVER-  
TOPPED GOLD AND PLATINUM  
PORTRAIT BROOCH, FRENCH**  
*personalized on reverse: Marie Therese  
Charlotte de France; with French assay  
marks and maker's mark; estimated total  
diamond weight: 1.50cts; dimensions: 1 1/4  
x 1in.*

US\$1,000 - 1,500





62



63



65



66



64

67



**62  
A SAPPHIRE, DIAMOND AND 18K GOLD RING**

oval cabochon sapphire approximately: 9.3 x 7.7 x 5.9mm; size: 4

**US\$1,000 - 1,500**

**63  
A COLORED CULTURED PEARL, DIAMOND AND 18K GOLD RING**

black pearl approximately 10.5mm; estimated total diamond weight: 3.00cts; size: 5, with inner sizing beads (pearl not tested for origin of color)

**US\$1,200 - 1,800**

**64  
A BAROQUE FRESHWATER PEARL, DIAMOND, STONE, BEAD, ENAMEL AND 18K GOLD GOOSE BROOCH**

central pearl approximately: 31 x 10.1mm; ref. 049; estimated total diamond weight: 1.05cts; length: 1 5/8in.

**US\$3,000 - 4,000**

**65  
A RUBY, SAPPHIRE, DIAMOND AND 18K FLOWER BROOCH, BUCCELLATI**

with three central cabochon rubies accented by sapphires and diamonds; signed Buccellati; weighing approximately: 40 grams; dimensions: 4 x 2 5/8in.

**US\$3,000 - 5,000**

**66  
A DIAMOND, ENAMEL TRACERY, PEARL AND 18K GOLD LINK BRACELET, FRENCH, 19TH CENTURY**

with French assay and maker's mark; gross weight approximately: 49 grams; length: 6 1/2in. (pearls not tested for origin)

**US\$1,000 - 1,500**

**67  
A CULTURED PEARL, ENAMEL, BLACK ONYX AND 18K GOLD MULTI-STRAND BRACELET, FRENCH**

pearls approximately 3.4mm to 3.0mm; with French assay marks and maker's mark on antique clasp; gross weight approximately: 40 grams; length: 7 1/4in.

**US\$1,000 - 1,500**



68



69



70



72

71



76



73



74



75



**PROPERTY FROM A PRIVATE COLLECTION OF CHICAGO**

68  
**AN ANTIQUE 14K GOLD, DIAMOND AND ENAMEL TRACERY SLIDE LONG CHAIN WITH WATCH PENDANT, CIRCA 1890**  
*gross weight approximately: 100 grams; length: 57in.*

US\$1,000 - 1,500

69  
**AN ANTIQUE 14K GOLD AND TURQUOISE MUFF CHAIN, CIRCA 1860**  
*weighing approximately: 41 grams; length: 50in.*

US\$800 - 1,200

70  
**A DIAMOND, RUBY, AND 14K GOLD HEART PENDANT WITH GEM-SET AND 18K GOLD CHAIN**  
*chain set with ruby, sapphire and pearl; pendant length: 7/8in; chain length: 15in.*

US\$800 - 1,200

71  
**A COMPANION PAIR OF TURQUOISE AND 14K GOLD NECKLACES**  
*turquoise beads graduating from 12.1mm to 7.3mm; lengths: 17in. and 15 1/2in.*

US\$1,200 - 1,800

72 Y  
**A CORAL, DIAMOND AND 14K GOLD BEAD NECKLACE**  
*coral beads graduating from 13.3mm to 6.3mm; length: 17 1/4in.*

US\$800 - 1,200

73  
**A DIAMOND, RUBY, EMERALD AND 18K GOLD RING**  
*size: 6 1/2, with hinged shank*

US\$800 - 1,200

74  
**A STAR SAPPHIRE, DIAMOND AND 14K WHITE GOLD RING**  
*central round cabochon star sapphire approximately 11.5 x 11.5 x 8.5mm; size: 6 3/4*

US\$800 - 1,200

75  
**AN ANTIQUE 18K GOLD AND TURQUOISE BRACELET, CIRCA 1900**  
*gross weight approximately: 47 grams; length: 7in.*

US\$800 - 1,200

**PROPERTY OF VARIOUS OWNERS**

76  
**AN OPAL, DIAMOND AND 18K GOLD RING**  
*oval-shaped cabochon opal approximately 25 x 15.2mm; estimated total diamond weight: 3.00cts; size: 8 1/2*

US\$1,800 - 2,500



77



80



78



79



81



77<sup>Y</sup>  
**A WHITE CORAL, TURQUOISE, LAPIS LAZULI, AND 14K GOLD TRIPLE STRAND NECKLACE**

coral beads graduate from 8.9mm to 3.7mm; lengths: 17 1/4in., 18 1/2in., and 20 1/4in.

US\$1,000 - 1,500

78<sup>Y</sup>  
**A CARVED CORAL AND 18K GOLD BROOCH**

gross weight approximately: 128 grams; dimensions: 1 3/4 x 1 1/4in.

US\$1,000 - 1,500

79  
**AN OPAL, DIAMOND AND 18K WHITE GOLD RING, ENGLISH**

central oval cabochon white opal approximately 30 x 11.9 x 6.4mm; with English hallmarks; estimated total diamond weight: 1.95cts; size: 10 1/4

US\$2,200 - 2,800

80<sup>Y</sup>  
**A COLLECTION OF FOUR DIAMOND, GEM-SET AND GOLD BROOCHES**

including emerald, ruby, aventurine quartz, pink coral, white opal, sapphire, nephrite jade, rock crystal, and cultured pearl; estimated total diamond weight: 3.15cts; gross weight approximately: 87 grams

US\$2,000 - 3,000

81  
**A DIAMOND AND 18K GOLD BRACELET**

estimated total diamond weight: 3.40cts; length: 7 1/4in.

US\$1,000 - 1,500

82  
**A JADEITE JADE, DIAMOND AND 18K GOLD RING**

oval cabochon jadeite jade approximately: 17.5 x 12.9 x 3.4mm; estimated total diamond total weight: 1.00ct; size: 6 3/4

US\$2,000 - 3,000

Mason Kay report #170731-1, dated July 31, 2017, stating the jadeite jade to be without dye or polymer treatment, "A" Jade



83

82



84



87



86



85

83

**A DIAMOND AND 14K GOLD NECKLACE**  
gross weight approximately: 63 grams;  
length: 17in.

US\$1,000 - 1,500

84<sup>Y</sup>

**AN ANTIQUE CORAL, GOLD AND METAL  
PENDANT AND EAR CLIP SET, CIRCA  
1870**

earring length: 2 1/4in.; pendant: 2 7/8 x 1  
7/8in.

US\$2,000 - 3,000

85<sup>Y</sup>

**A 14K GOLD AND GEM-SET CHARM  
BRACELET**

suspending six 14k and one 18k gold  
oversize charms; including coral, turquoise,  
garnet, and cultured pearl; gross weight  
approximately: 81 grams; length: 6 1/2in.

US\$1,500 - 2,000

86

**AN ANTIQUE DIAMOND, SEED PEARL,  
ENAMEL AND 14K GOLD LOCKET,  
CIRCA 1874**

monogrammed and dated; weighing  
approximately: 83 grams; length: 2 3/4in.

US\$4,000 - 6,000

87

**AN EMERALD, DIAMOND AND 18K  
GOLD RING**

estimated total diamond weight: 1.20cts;  
size: 6

US\$1,000 - 2,000



88



89



91



90



92

88  
**A RETRO DIAMOND, STYPTOR AND 18K ROSE GOLD MINAUDIÈRE, VAN CLEEF & ARPELS, FRENCH, CIRCA 1945**  
set with rose-cut diamonds; *signed Van Cleef & Arpels, with makers mark, no. 41380; dimensions: 6 x 4 3/4 x 3/4in.*  
**US\$1,500 - 2,500**

89  
**A PAIR OF AQUAMARINE, DIAMOND AND PLATINUM DROP EARRINGS**  
two round mixed-cut aquamarines average approximately 14.5 x 9.2mm; *estimated total diamond weight: 2.50cts; length 2 3/4in.*  
**US\$5,000 - 7,000**

90  
**A DIAMOND AND PALLADIUM SOLITAIRE RING**  
center old European-cut diamond approximately: 2.60cts; *size: 8*  
**US\$5,000 - 7,000**

91  
**A SAPPHIRE, ZIRCON AND SILVER CLIP BROOCH**  
*length: 1 1/2in.*  
**US\$800 - 1,200**

92  
**A DIAMOND AND 18K WHITE GOLD CUFF BRACELET**  
*estimated total diamond weight: 2.40cts; diameter: 2 1/4in.*  
**US\$2,000 - 3,000**



93



94



95



96



97



98

**PROPERTY OF A VIRGINIA LADY**

93  
**A BOULDER OPAL, BLACK ONYX, DIAMOND, ENAMEL AND 14K WHITE GOLD BROOCH-PENDANT/NECKLACE**  
cushion and triangular-shaped opals approximately 21 x 15 x 6mm and 16 x 10 x 4.4mm, respectively; *estimated total diamond weight: 2.50cts; gross weight approximately: 29 grams; length: 26in., including (2) 4in. extenders*

**US\$5,000 - 7,000**

**PROPERTY OF VARIOUS OWNERS**

94  
**A DIAMOND, CULTURED PEARL, RUBY AND 18K WHITE GOLD BIRD BROOCH**  
cultured pearl approximately: 9.6mm; *estimated total diamond weight: 2.50cts; dimensions: 2 x 1 5/8in.*

**US\$1,500 - 2,500**

95  
**A DIAMOND AND PLATINUM BOMBÉ RING**  
center circular brilliant-cut diamond weighing 2.58 carats; *estimated remaining diamond weight: 3.25cts; size: 5 1/2*

**US\$7,000 - 10,000**

GIA report #5182260050, dated March 27, 2017, stating: M color, SI1 clarity.

96  
**AN ANTIQUE BLACK OPAL, DIAMOND, DEMANTOID GARNET AND PLATINUM BROOCH, WALTON & CO., CIRCA 1915**  
oval-shaped cabochon black opal approximately 27 x 15.5 x 5.7mm; *signed Walton & Co.; dimensions: 1 7/8 x 7/8in.*

**US\$4,000 - 6,000**

97  
**A PAIR OF DIAMOND AND 18K WHITE GOLD HOOP EARRINGS**  
*estimated total diamond weight: 5.65cts; length: 1 1/2in.*

**US\$2,000 - 3,000**

98  
**A PAIR OF DIAMOND AND PLATINUM PENDANT EARRINGS**  
*estimated total diamond weight: 12.50cts; gross weight approximately: 47 grams; length: 3 3/8in.*

**US\$10,000 - 15,000**



99



100



102



101



103



104



99

**A TRIO OF DIAMOND, COLORED DIAMOND, PINK SAPPHIRE, ENAMEL AND 18K WHITE GOLD ETERNITY BANDS**

total diamond weight: 4.30cts; sizes 7 and 7 1/2 (colored diamonds untested for origin of color)

US\$5,000 - 8,000

**PROPERTY FROM A PRIVATE COLLECTION, WASHINGTON D.C.**

100

**AN ASSEMBLED SUITE OF RETRO RUBY, DIAMOND AND 14K TRI-COLOR GOLD JEWELRY, CIRCA 1945**

comprising: a bracelet, two brooches and a pair of screwback earrings; gross weight approximately: 86 grams; bracelet length: 7 3/4in.; brooch lengths: 2 11/16 and 2 9/16in.; earring length: 3/4in.

US\$1,000 - 1,500

**PROPERTY OF VARIOUS OWNERS**

101

**A DIAMOND, RUBY AND PLATINUM RING**

center round brilliant-cut diamond: 1.89cts; remaining total diamond weight: 1.84cts; size: 6 3/4

US\$3,000 - 5,000

102

**A TSAVORITE GARNET, DIAMOND AND 18K WHITE GOLD RING**

central heart-shaped tsavorite garnet weighing approximately: 2.32cts (stamped); estimated total diamond weight: 3.00cts; size: 6 3/4

US\$4,000 - 6,000

103

**A RUBY, DIAMOND AND 18K WHITE GOLD HEART RING**

invisibly-set rubies bordered by diamond-set mount; size: 6 3/4

US\$1,800 - 2,500

**PROPERTY FROM A PRIVATE TEXAS COLLECTION**

104

**A DIAMOND AND PLATINUM ETERNITY BAND, TIFFANY & CO.**

signed Tiffany & Co.; estimated total diamond weight: 1.50cts; size: 4 1/4

US\$1,000 - 1,500





105



106



107



108



109



110



**PROPERTY OF VARIOUS OWNERS**

105  
**A RUBY, DIAMOND, ENAMEL AND 18K BI-COLOR GOLD KNOT RING**  
*estimated total diamond weight: 1.91cts; gross weight approximately: 29 grams; size: 8*

US\$3,000 - 5,000

106  
**A PAIR OF PINK AND YELLOW DIAMOND, DIAMOND AND 18K BI-COLOR GOLD FROG CUFFLINKS**  
*estimated total diamond weight: 2.40cts; dimensions: 1 1/8 x 1in. (colored diamonds untested for origin of color)*

US\$2,000 - 3,000

107  
**A PINK SAPPHIRE AND 18K BLACKENED GOLD ETERNITY BAND**  
*size: 6*

US\$800 - 1,200

108  
**A DIAMOND, RUBY AND 18K WHITE GOLD FLOWER RING**  
*size: 6*

US\$1,500 - 2,500

109  
**AN 18K TRI-COLOR GOLD BRACELET**  
*weighing approximately: 88 grams; width: 3/4in., length: 7 1/4in.*

US\$2,000 - 3,000

110<sup>Y</sup>  
**A COLLECTION OF REVERSE PAINTED CRYSTAL, MOTHER-OF-PEARL, RUBY AND 14K GOLD HUNTING JEWELRY**  
*comprising a stirrup-shaped brooch and a fox head motif 5-piece dress-set; brooch dimensions: 1 3/8 x 1 1/6in.*

US\$2,000 - 3,000



111

**111**  
**A DIAMOND AND 18K GOLD 'POLO' INTEGRAL BRACELET WATCH, PIAGET**  
quartz movement; dial and bracelet signed, with signed box; case no. 8131 C 701 403890; case: 20 x 20mm; estimated total diamond weight: 6.85cts; gross weight approximately: 108 grams; overall length: 7 5/8in.

US\$4,000 - 6,000

**112**  
**TWO PAIRS OF ENAMEL AND 18K GOLD CUFFLINKS**  
one pair with French assay marks and indistinct maker's mark; gross weight approximately: 49 grams

US\$2,000 - 3,000



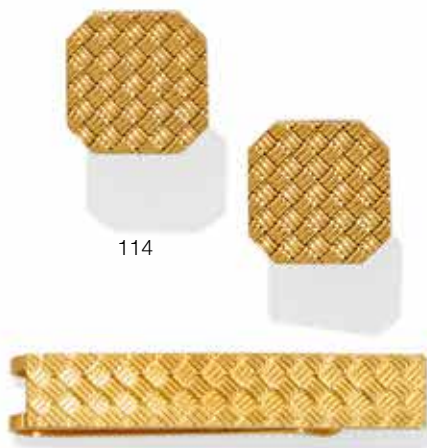
113

**113**  
**A BLACK OPAL, DIAMOND AND 18K GOLD SLIDE PENDANT WITH 14K GOLD OMEGA NECKLACE**  
triangular-shaped black opal approximately 12 x 11.6 x 3.22mm; gross weight approximately: 49 grams; pendant slide: 1 1/8 x 5/8in.; collar length: 16in.

US\$1,500 - 2,500

**114**  
**A PAIR OF 18K GOLD CUFFLINKS AND TIE BAR, TIFFANY & CO.**  
signed Tiffany & Co.; gross weight approximately: 33 grams

US\$800 - 1,200



114

112

**115**  
**A COLORED DIAMOND, DIAMOND AND 18K BI-COLOR GOLD RING**  
three yellow heart-shaped diamonds weighing in total: 1.86cts; total diamond weight: 2.15cts; size: 6 3/4 (colored diamonds untested for origin of color)

US\$3,500 - 4,500

**116**  
**A RUBY, DIAMOND AND PLATINUM RING**  
oval-shaped mixed-cut ruby weighing 2.73cts; estimated total diamond weight: 0.95ct; size: 7 1/4

US\$5,000 - 7,000

GIA report #2185293159, dated April 16, 2017, stating: Burmese origin, heated (moderate residues)



116



115



117



118



119



120



121



122

117  
**AN EMERALD, DIAMOND AND 14K WHITE GOLD RING**  
*estimated emerald weight: 2.75cts; size: 6 1/4*

**US\$10,000 - 15,000**

Accompanied by AGL report #1084779, dated June 28, 2017, stating the emerald as: Colombian origin, minor modern clarity enhancement.

118  
**A PAIR OF 14K GOLD CURB LINK BRACELETS, RAYMOND YARD**  
*both signed Yard; gross weight approximately: 162 grams; lengths: 8in.*

**US\$4,000 - 6,000**

119  
**A DIAMOND, ENAMEL, PLATINUM AND 18K GOLD DRESS SET, THOMAS COOPER**  
*comprising a pair of cufflinks, 4 shirt studs and a tie clip; each with maker's mark, tie bar with English hallmarks on clip; gross weight approximately: 39 grams*

**US\$1,800 - 2,500**

120  
**AN ENAMEL, DIAMOND, LAPIS AND 18K GOLD BEETLE BROOCH, DONALD CLAFLIN FOR TIFFANY & CO.**  
*signed Tiffany; gross weight approximately: 26 grams; length: 1 1/2in.*

**US\$3,000 - 5,000**

121  
**AN EMERALD, DIAMOND AND 18K WHITE GOLD RING, FRENCH**  
*cut-cornered rectangular-cut emerald weighing 11.89cts; with French maker's and assay marks; estimated total diamond weight: 1.35cts; size: 6*

**US\$6,000 - 8,000**

122  
**AN EMERALD AND 18K GOLD DRESS SET, THOMAS COOPER**  
*comprising a pair of cufflinks and 4 shirt studs; gross weight approximately: 29 grams*

**US\$1,000 - 1,500**



123



124



125



126



127



128

**123  
A CULTURED PEARL, DIAMOND,  
AQUAMARINE AND GOLD NECKLACE  
AND EAR CLIPS**

three fancy pear-shaped mixed-cut aquamarines; *estimated total diamond weight: 3.50cts; necklace length: 16 1/2in., earring length: 1 3/8in.*

**US\$5,000 - 7,000**

**124  
A DIAMOND, PURPLE TITANIUM AND  
18K WHITE GOLD RING**

*estimated total diamond weight: 2.00cts; size: 6*

**US\$2,500 - 3,500**

**125  
A DIAMOND AND 18K WHITE GOLD  
“CRAZY HOURS” BANGLE BRACELET,  
FRANCK MULLER**

of openwork numerical design; *signed Franck Muller, with maker's mark; estimated total diamond weight: 1.95cts; gross weight approximately: 51 grams; inner circumference: 6 1/2in.*

**US\$2,500 - 3,500**

**126  
A DIAMOND, RUBY AND 18K WHITE  
GOLD SPIDER BROOCH**

*no. 15001; estimated total diamond weight: 4.00cts; dimensions: 2 3/4 x 1 1/4in.*

**US\$3,000 - 5,000**

**127  
A PAIR OF DIAMOND, COLORED  
DIAMOND, TITANIUM AND 18K WHITE  
GOLD EAR CLIPS**

two round brilliant-cut diamonds weighing a total of 1.48cts; *estimated total black diamond weight: 2.95cts; diameter: 1in. (black diamonds not tested for origin of color)*

**US\$2,000 - 3,000**

**128  
A SPINEL, SAPPHIRE, DIAMOND AND  
WHITE GOLD PENDANT/NECKLACE**

*pendant length: 2 1/2in.; with 18in. chain*

**US\$5,500 - 6,500**



129



130



131



132



133



134

129  
**AN AQUAMARINE, DIAMOND AND SAPPHIRE PENDANT/NECKLACE**  
rectangular step-cut aquamarine approximately 23.5 x 16.7 x 10.7mm; signed *Tiffany & Co*; length: 18 1/2in.

US\$5,000 - 7,000

130  
**A DIAMOND AND 18K WHITE GOLD BOMBE RING**  
estimated total diamond weight: 3.00cts.; size: 7 1/4

US\$2,000 - 3,000

131  
**A DIAMOND AND 18K WHITE GOLD ETERNITY BAND**  
estimated total diamond weight: 2.00cts; size: 7 1/4

US\$2,000 - 3,000

132  
**A COLORED CULTURED PEARL AND 14K GOLD NECKLACE AND EARRING SET**  
accompanied by two pearl pendants; graduated pearls from approximately 17.6mm to 15.1mm; length: 17in. (colored pearls untested for origin of color)

US\$3,000 - 5,000

133  
**A RUBY, RED STONE, TITANIUM AND 18K WHITE GOLD CUFF BANGLE BRACELET**  
cuff diameter: 2 3/8in.; flower dimensions: 2 1/8 x 2in.

US\$2,500 - 3,500

134  
**AN AQUAMARINE, DIAMOND AND 14K WHITE GOLD RING**  
cut-cornered rectangular step-cut aquamarine approximately 16.7 x 13.3 x 8.4mm; size: 6 3/4

US\$2,500 - 3,500



135

136



137



139



140



138

**PROPERTY FROM A PRIVATE OREGON COLLECTION**

**135  
A CULTURED PEARL, DIAMOND AND PLATINUM DOUBLE STRAND NECKLACE**

pearls approximately 8.5 to x 9.0mm; estimated total diamond weight: 3.00cts; length: 21in.

US\$2,500 - 3,500

**136  
A PAIR OF CULTURED PEARL, DIAMOND AND PLATINUM DROP EARRINGS**

pearls approximately 12.2mm and 12.0mm; estimated total diamond weight: 3.00cts; length: 1 3/8in.

US\$3,000 - 5,000

**PROPERTY OF VARIOUS OWNERS**

**137  
A CARVED MOONSTONE, DIAMOND AND SILVER-TOPPED GOLD BROOCH, 19TH CENTURY**

estimated total diamond weight: 1.60cts; length: 1 1/4in.

US\$1,200 - 1,800

**138  
A PAIR OF DIAMOND, CULTURED PEARL AND PLATINUM EARRINGS**

pearls approximately 6.6mm; diameter: 1/2in. (pearls untested for origin)

US\$1,000 - 2,000

**139  
A DIAMOND AND PLATINUM WEDDING SET, CIRCA 1924**

center old European cut diamond approximately: 0.80ct; size: 6 3/4

US\$1,200 - 1,800

**140  
A PAIR OF ART DECO DIAMOND, RUBY AND PLATINUM DRESS CLIPS, CIRCA 1930**

estimated total diamond weight: 3.00cts; weighing approximately: 25 grams; length: 2 1/4in.

US\$2,000 - 3,000



141



144



142



145



143



146

**141  
AN ANTIQUE DIAMOND, CULTURED PEARL AND PLATINUM PENDANT/NECKLACE, CIRCA 1910**

button pearl approximately 7.3mm, and drop-shaped pearl approximately 11.1 x 7.2mm; *estimated total diamond weight: 2.85 carats; length: 16 1/2in.* (pearls untested for origin)

**US\$2,500 - 3,500**

**144  
A STAR SAPPHIRE, DIAMOND AND PLATINUM RING**

oval cabochon star sapphire approximately 10.4 x 9.0 x 4.4mm; *size: 8 1/2*

**US\$1,500 - 2,500**

**143  
A DIAMOND, ENAMEL AND 14K GOLD VANITY CASE**

*gross weight approximately: 114 grams; dimensions: 3 1/2 x 2 5/16in. (loss to enamel)*

**US\$2,000 - 3,000**

**144  
A DIAMOND, ENAMEL, AND 18K WHITE GOLD JOCKEY BROOCH, ENGLISH, 1990**

*with English hallmarks; length: 1 1/8in.*

**US\$1,000 - 1,500**

**145  
A NATURAL PEARL, DIAMOND AND PLATINUM-TOPPED 18K GOLD RING, CIRCA 1900**

semi-baroque button pearl approximately 9.15 x 8.94mm; *with French assay mark; size: 5 3/4*

**US\$1,800 - 2,500**

GIA report #2183183867, dated March 3, 2017, stating: natural saltwater pearl

**146  
A SAPPHIRE, DIAMOND AND PLATINUM LINE BRACELET**

*with rectangular-cut sapphires; estimated total diamond weight: 1.20cts; length: 7in.*

**US\$2,500 - 3,500**



147

148

150

149

151

152

153

147  
**AN ART DECO DIAMOND, DYED GREEN CHALCEDONY AND PLATINUM BRACELET, CIRCA 1930**  
*estimated total diamond weight: 3.00cts; length: 7 1/8in.*

US\$4,000 - 6,000

**PROPERTY FROM THE COLLECTION OF CLAES NOBEL, OREGON**

148  
**A CULTURED PEARL AND SILVER NECKLACE, MIKIMOTO**  
*pearls approximately 5.4 to 5.0mm; with Mikimoto maker's mark, accompanied by signed pouch; length: 25 1/4in.*

US\$800 - 1,200  
 To be sold without reserve

149  
**A PAIR OF SAPPHIRE, DIAMOND AND PLATINUM DROP EARRINGS**  
*two round mixed-cut sapphires approximately 6 x 6 x 3.5mm; estimated total diamond weight: 3.00cts; length: 1 1/4in.*

US\$3,000 - 5,000

150  
**A SAPPHIRE, DIAMOND, PLATINUM AND 18K WHITE GOLD RING, CIRCA 1935**  
*oval-shaped sapphire approximately 8.2 x 7.5 x 4.5mm; estimated total diamond weight: 1.25cts; size: 5 1/2 with hinged bar*

US\$2,000 - 3,000

**PROPERTY OF VARIOUS OWNERS**  
 151  
**AN EMERALD, DIAMOND AND 18K WHITE GOLD PENDANT**  
*round cabochon emerald approximately 7.0 x 5.4mm; estimated total diamond weight: 2.50cts; diameter: 1 1/4in.*

US\$1,000 - 1,500

152  
**AN ART DECO DIAMOND AND PLATINUM LORGNETTE, CIRCA 1925**  
*estimated total diamond weight: 1.90cts; length when open: 3 3/4in.*

US\$1,000 - 1,500





153

154



157



156

158

153  
**A LATE ART DECO DIAMOND, SAPPHIRE AND PLATINUM BROOCH, CIRCA 1935**  
*estimated total diamond weight: 3.40cts; length: 1 5/8in.*

US\$2,000 - 3,000

154  
**A RUBY, DIAMOND AND 18K GOLD FLOWER BROOCH, CARTIER, FRENCH**  
*signed Cartier, Inc., with French marks, no. 7047; gross weight approximately: 29 grams; length: 2 3/4in.*

US\$2,500 - 3,500

155  
**A RETRO DIAMOND, RUBY AND 14K GOLD BRACELET, CIRCA 1945**  
*gross weight approximately: 26 grams; length: 6 7/8in.*

US\$1,000 - 2,000

156  
**A DIAMOND, RUBY AND GOLD RING**  
*estimated total diamond weight: 1.35cts; approximate gross weight: 30 grams; size: 8*

US\$2,000 - 3,000

157  
**A PAIR OF DIAMOND, EMERALD AND 18K WHITE GOLD EARRINGS**  
*length: 2in.*

US\$1,200 - 1,800

158  
**A CULTURED PEARL, DIAMOND AND PLATINUM FIVE-STRAND NECKLACE**  
*graduated cultured pearls from approximately 9.0mm to 5.5mm; length: 15in.*

US\$1,500 - 2,500



159



160



162



163



164

159  
**AN OPAL, ROCK CRYSTAL QUARTZ,  
DIAMOND AND PLATINUM NECKLACE**  
opal beads from approximately 13.25mm to  
5.7mm; length: 20 1/2in.

US\$2,000 - 3,000

160  
**A DIAMOND AND 14K GOLD RING**  
estimated total diamond weight: 1.50cts;  
size: 8

US\$800 - 1,200

161  
No lot

162  
**A DIAMOND, RUBY AND 18K GOLD  
ARTICULATED BROOCH, TIFFANY & CO.**  
signed *Tiffany & Co.*; gross weight  
approximately 26 grams; length: 2 1/8in.

US\$1,000 - 1,500

163  
**A YELLOW SAPPHIRE, DIAMOND AND  
18K GOLD FLOWER RING**  
size 6 1/2

US\$1,000 - 1,500

164  
**A DIAMOND AND 18K GOLD BRACELET,  
TIFFANY & CO.**  
signed *Tiffany & Co.*; length: 7 1/2in.

US\$1,500 - 2,500



165

166

167

168

169

170

165  
**A COLLECTION OF 18K GOLD JEWELRY, TIFFANY & CO.**

brooch and flame ear clips signed Tiffany & Co., Schlumberger; knot ear clips signed Tiffany & Co. Germany; gross weight approximately: 44 grams

US\$2,500 - 3,500

166  
**A 14K GOLD COLLAR NECKLACE, GROSSE, 1962**

signed Grosse Germany; gross weight approximately: 64 grams; length: 17 1/4in.

US\$1,200 - 1,800

167  
**A MULTI-COLOR STAR SAPPHIRE, RUBY, DIAMOND AND 14K GOLD STARBURST CLIP/BROOCH, TRIO**

oval cabochon ruby approximately 10.8 x 58.2 x 6.0mm; signed Trio; estimated total diamond weight: 2.00cts; gross weight approximately: 54 grams; length: 2 1/2in.

US\$3,500 - 5,000

168  
**A DIAMOND AND 18K GOLD BAND, CARTIER, 1996**

signed Cartier, no. E0355556; size: 8

US\$2,000 - 3,000

169<sup>Y</sup>  
**A CHRYSOPRASE, CORAL, DIAMOND AND 18K GOLD HEART PENDANT/ ENHANCER, CARTIER, FRENCH, 1991**

signed Cartier 1991, no. B2821, with French assay marks; length: 1 1/8in.

US\$1,000 - 2,000

170  
**A PAIR OF OPAL, DIAMOND AND 14K GOLD DAY/NIGHT PENDANT EARRINGS**

with two oval cabochon opals approximately 16 x 12mm and two pear-shaped cabochon opals approximately 19 x 11.5mm; estimated total diamond weight: 7.50cts; length: 2 1/4in.

US\$4,000 - 6,000



172

173

174

171

175

176

**PROPERTY OF A NAPA, CA COLLECTOR**

171  
**A PAIR OF SAPPHIRE, RUBY, DIAMOND AND 14K GOLD EARRINGS**  
 oval-shaped cabochon sapphires  
 approximately 8.9 x 7.1mm; length: 7/8in.

US\$1,000 - 1,500

172  
**A RUBY, DIAMOND AND 18K WHITE GOLD LINE BRACELET**  
 estimated total diamond weight: 2.40cts;  
 length: 8 1/4in.

US\$1,500 - 2,000

173  
**A RUBY, DIAMOND AND 18K WHITE GOLD BRACELET**  
 estimated total diamond weight: 3.00cts;  
 length: 7 1/4in.

US\$2,000 - 3,000

174  
**A DIAMOND AND 18K GOLD HINGED BANGLE BRACELET**  
 estimated total diamond weight: 4.00cts;  
 gross weight approximately: 30 grams;  
 diameter: 2 3/8in.

US\$2,500 - 3,500

175  
**A GEM-SET, DIAMOND AND GOLD RING**  
 centering a round cabochon sapphire  
 approximately: 10 x 10 x 6.5mm, with ruby,  
 emerald, sapphire and diamond accents;  
 gross weight approximately: 25 grams; size:  
 8 1/2

US\$3,000 - 5,000

176  
**A GEM-SET, GLASS AND 14K GOLD SLIDE BRACELET**  
 gross weight approximately: 35 grams;  
 length: 7 1/2in.

US\$1,000 - 1,500



**PROPERTY OF VARIOUS OWNERS**

177  
**A DIAMOND AND 18K ROSE AND YELLOW GOLD GRAPE CLUSTER/LEAF NECKLACE AND EARRING SET**  
*estimated total diamond weight: 4.60cts; gross weight approximately: 139 grams; necklace length: 16 1/2in., clip earring length: 1 1/8in.*

US\$7,000 - 9,000

178  
**A DIAMOND, PINK TOPAZ, CULTURED PEARL, SEED PEARL, PLATINUM AND 18K GOLD BROOCH AND EARRINGS**  
*estimated total diamond weight: 2.00cts; gross weight approximately: 28 grams; brooch length: 1 3/4in., earring length: 1 3/4in.*

US\$2,000 - 3,000

179  
**A SAPPHIRE, DIAMOND AND 18K GOLD RING**  
*size: 5*

US\$1,000 - 1,500

180  
**A SAPPHIRE, FRESHWATER PEARL AND 14K GOLD "THURSDAY'S CHILD" BROOCH, RUSER**  
*signed Ruser; gross weight: 30 grams; dimensions: 2 1/2 x 1 1/8in.*

US\$1,200 - 1,800

181  
**A PAIR OF COLORED DIAMOND AND ROSE GOLD EAR STUDS**  
*estimated total diamond weight: 6.30cts (brown diamonds untested for origin of color)*

US\$4,000 - 6,000



182

183

184



186



185



187

182<sup>Y</sup>  
**A GRADUATED CORAL BEAD NECKLACE**

beads from approximately 23.9 to 9.6mm; length: 26in.

US\$1,000 - 1,500

183  
**A JADEITE JADE AND GOLD RING**

round cabochon jadeite approximately 12.26 x 16.19 x 9.14mm; size: 9

US\$1,000 - 1,500

GIA #5182476837, dated June 13, 2017, stating the jadeite: natural color, no indications of color impregnation.

184  
**A DIAMOND, RUBY, PLATINUM AND 18K GOLD DRAGON BROOCH, TIFFANY & CO.**

signed T&Co; estimated total diamond weight: 1.00ct; length: 1 1/8in.

US\$1,500 - 2,500

185  
**A FRESHWATER CULTURED PEARL, DIAMOND AND 18K GOLD NECKLACE**

with French import marks; central triangular-cut diamond approximately: 0.95ct; length: 17 1/2in.

US\$1,200 - 1,800

186  
**AN 18K GOLD AND BLUE STONE BROOCH/PENDANT**

gross weight approximately 43 grams; length: 2 3/4in.

US\$1,500 - 2,500

187  
**A CARVED JADEITE JADE AND 18K GOLD PENDANT/BROOCH**

carved gryphon jade plaque approximately 31.0 x 19.7 x 1.1mm; length: 2 1/8in.

US\$800 - 1,200



188



189



190



192



193

188 Y  
**A CARVED CORAL AND 14K GOLD  
BROOCH/PENDANT**

*gross weight approximately: 39 grams;  
length: 3in.*

**US\$1,200 - 1,800**

189  
**A DIAMOND, ENAMEL AND GOLD  
ALLIGATOR RING**

*size: 7 1/4*

**US\$900 - 1,200**

190  
**AN 18K GOLD AND DIAMOND FLEXIBLE  
BANGLE BRACELET, FRENCH**

*with French maker's and export marks; gross  
weight approximately: 130 grams; inner  
diameter: 2 1/4in.*

**US\$5,000 - 8,000**

191  
No lot

192  
**A PAIR OF DIAMOND, RUBY AND 18K  
GOLD BROOCHES, BOUCHERON AND  
MAUBOUSSIN, PARIS**

*signed Boucheron Paris, and Mauboussin  
Paris, no. 18199; gross weight  
approximately: 31 grams; length: 1in and 1  
5/8in.*

**US\$1,500 - 2,000**

193  
**AN 18K GOLD FANCY LINK CHAIN,  
BUCCELLATI, ITALY**

*signed Buccellati Italy; weighing  
approximately: 64 grams; length: 33in.*

**US\$3,000 - 5,000**



194

195

196

197

198

194  
**A CULTURED PEARL, GEM-SET AND GOLD CHARM BRACELET**

*gross weight approximately: 105 grams; length: 7 1/2in.*

**US\$1,200 - 1,800**

195  
**A GLASS, ENAMEL AND 14K GOLD CHARM BRACELET**

*gross weight approximately: 88 grams; length: 7 3/4in.*

**US\$1,500 - 2,000**

196  
**A JADEITE JADE, DIAMOND AND 18K WHITE GOLD RING**

*oval cabochon jadeite jade approximately: 15.98 x 12.31 x 4.07mm; size: 5*

**US\$4,000 - 6,000**

Please see department for Mason Kay report.

197  
**A TURQUOISE, DIAMOND AND 18K GOLD RING, LA TRIOMPHE**

*turquoise cabochon approximately: 16.3 x 12.6 x 6.1mm; signed La Triomphe; estimated total diamond weight: 1.75cts; size: 4 3/4*

**US\$1,000 - 1,500**  
**To be sold without reserve**

198  
**AN EMERALD, DIAMOND AND 14K GOLD HEART PENDANT**

*cut-cornered square step-cut emerald approximately 8.8 x 8.75 x 6.2mm; estimated total diamond weight: 1.30cts; length: 1 1/8in.*

**US\$1,500 - 2,000**





199  
**A CITRINE, DIAMOND AND 10K WHITE GOLD RING**

central oval-shaped mixed-cut citrine  
 approximately 18 x 13.2 x 8.3mm; size: 6

US\$800 - 1,200

200  
**A CULTURED PEARL, GEM-SET, METAL AND 14K GOLD CHARM BRACELET**

gross weight approximately: 91 grams;  
 length: 7in.

US\$1,000 - 1,500

201  
**A CULTURED PEARL, GEM-SET AND GOLD CHARM BRACELET**

gross weight approximately: 136 grams;  
 length: 7 1/2in.

US\$2,000 - 2,500

202  
**A CARVED RED JADEITE JADE, DIAMOND AND 18K WHITE GOLD FLOWER RING**

size: 6 3/4 shy

US\$1,500 - 2,500

203  
**AN EMERALD, DIAMOND AND 18K GOLD RING**

emerald-cut emerald approximately 10.50 x 10.30 x 5.40mm; estimated total diamond weight: 1.20cts; size 9

US\$4,000 - 6,000



204

205

206

207

208

209

**204  
A CULTURED PEARL, DIAMOND, RED  
GLASS AND 14K WHITE GOLD TRIPLE  
STRAND BRACELET**

pearls approximately: 5.8mm to 5.5mm;  
estimated total diamond weight: 1.50cts;  
length: 6 1/2in.

**US\$1,000 - 1,500**

**205  
A PAIR OF TSAVORITE GARNET,  
DIAMOND, SILVER AND 18K GOLD EAR  
CLIPS**

estimated total tsavorite garnet weight:  
8.30cts; estimated total diamond weight:  
3.80cts; dimensions: 1 x 3/4in.

**US\$2,000 - 4,000**

**206  
A PAIR OF DIAMOND AND 18K WHITE  
GOLD TASSEL EARRINGS**

total diamond weight: 7.07cts; gross weight  
approximately: 35 grams; length: 3 3/8in.

**US\$2,500 - 3,500**

**207  
A PAIR OF TSAVORITE GARNET,  
DIAMOND AND 18K WHITE GOLD DROP  
EARRINGS**

oval-shaped mixed-cut tsavorite garnets  
weighing in total approximately: 4.00cts;  
length: 1 1/2in.

**US\$2,500 - 3,500**

**208  
A COLLECTION OF CULTURED PEARL,  
DIAMOND, PLATINUM AND WHITE  
GOLD JEWELRY**

comprising two rings and a pair of earrings;  
estimated total diamond weight: 1.50cts;  
ring sizes: 5 1/4 and 5 3/4; earring length: 1  
1/4in.

**US\$1,000 - 1,500**

**209  
A RUBY, DIAMOND AND 18K WHITE  
GOLD BUTTERFLY RING**

estimated total ruby weight: 5.85cts; size 6

**US\$2,000 - 3,000**



210



211



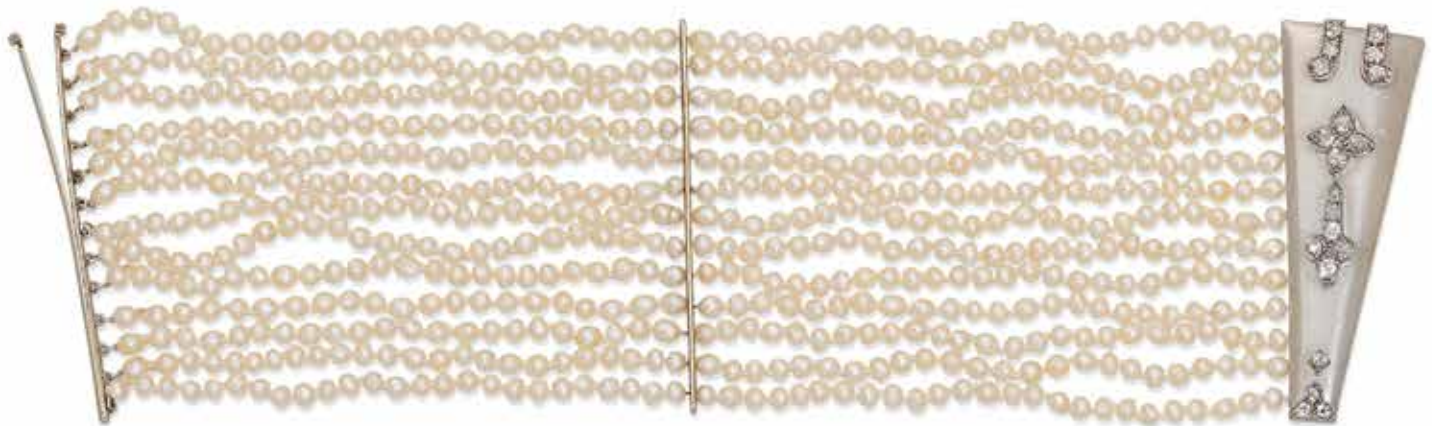
212



213



214



215

**210  
A PAIR OF DIAMOND, RUBY AND 18K  
WHITE GOLD EAR CLIPS**

*estimated total diamond weight: 1.30cts;  
length: 3/4in.*

**US\$1,800 - 2,500**

**211  
A TSAVORITE GARNET, DIAMOND AND  
18K WHITE GOLD RING**

*oval-shaped mixed cut tsavorite garnet  
approximately 12.55 x 8.89 x 4.74mm; size:  
6 1/2*

**US\$4,000 - 6,000**

**212  
A DIAMOND, SAPPHIRE AND 18K WHITE  
GOLD BRACELET**

*estimated total diamond weight: 4.50cts;  
weighing approximately: 63 grams; length:  
7 1/2in.*

**US\$1,500 - 2,000**

**213  
A DIAMOND, RUBY AND PLATINUM  
RING**

*center round brilliant-cut diamond: 1.72cts;  
size: 6 3/4*

**US\$3,800 - 4,500**

**214  
A PAIR OF DIAMOND, GEM-SET AND  
PLATINUM EAR PENDANTS**

*total diamond weight: 2.91cts; length: 2  
1/8in.*

**US\$3,500 - 5,000**

**215  
A PEARL, DIAMOND PLATINUM  
AND WHITE METAL MULTI-STRAND  
BRACELET**

*pearls approximately 1.3mm to 1.1mm;  
length: 6in.*

**US\$2,000 - 3,000**

GIA report #2185199651, dated February  
27, 2017, stating: Grossular Garnet, Tsavorite



216



217



218



220



219



221

**PROPERTY OF A NAPA, CA COLLECTOR**

216

**A DIAMOND AND 18K WHITE GOLD RING**

*estimated total diamond weight: 7.00cts; size: 7 1/4in.*

**US\$3,000 - 5,000**

217

**A PAIR OF DIAMOND AND 14K GOLD EARRINGS**

*estimated total diamond weight: 2.25cts; length: 3/4in.*

**US\$800 - 1,200**

**To be sold without reserve**

218

**A DIAMOND AND 18K TRI-COLOR GOLD RING**

*estimated total diamond weight: 1.00ct; size: 6 3/4*

**US\$800 - 1,200**

**To be sold without reserve**

219

**A SET OF THREE DIAMOND AND 14K TRI-COLOR GOLD RINGS**

*set in yellow, white and rose gold; estimated total diamond weight: 2.00cts; size: 7*

**US\$800 - 1,200**

**To be sold without reserve**

220

**A DIAMOND, GEM-SET AND 18K GOLD BIRD BROOCH**

*including turquoise, sapphire, emerald and ruby; dimensions: 2 1/4 x 2in.*

**US\$3,500 - 5,500**

221

**A DIAMOND, SILVER AND GOLD BANGLE BRACELET**

*estimated total diamond weight: 4.00cts (semi-faceted diamond slices not calculated); gross weight approximately: 34 grams; diameter: 2 1/4in.*

**US\$2,000 - 3,000**



222



223



225



224



226



227

**222  
A DIAMOND AND 14K GOLD CUFF  
BANGLE BRACELET**

*ref. Y391/62; estimated total diamond weight: 3.25cts; gross weight approximately: 29 grams; diameter: 2 3/8in.*

**US\$2,000 - 3,000**

**223  
A DIAMOND AND 18K GOLD RING**

*estimated total diamond weight: 2.05cts; size: 6*

**US\$1,500 - 2,000**

**224  
A DIAMOND, COLORED DIAMOND AND  
18K WHITE GOLD RING**

*estimated total diamond weight: 2.50cts; size: 8 (colored diamonds untested for origin of color)*

**US\$1,000 - 1,500**

**225  
A PAIR OF DIAMOND AND 18K WHITE  
GOLD EARRINGS**

*estimated diamond weight: 7.00cts; length 1 3/4in.*

**US\$3,000 - 5,000**

**226  
A PAIR OF SAPPHIRE, DIAMOND,  
14K GOLD AND SILVER BANGLE  
BRACELETS**

*estimated total diamond weight: 3.50cts; gross weight approximately: 49 grams; diameters: 2 3/8in.*

**US\$2,000 - 3,000**

**227  
A DIAMOND AND 18K WHITE GOLD  
BRACELET**

*estimated total diamond weight: 7.00cts; length: 6 7/8in.*

**US\$3,000 - 5,000**



228

229

230

231

232

233

**PROPERTY OF VARIOUS OWNERS**

228  
**AN 18K GOLD INTEGRAL BRACELET WRISTWATCH, GIRARD-PERREGAUX**  
 back wind movement; dial signed; case no. 79100200 (partially indistinct); gross weight approximately: 48 grams; length: 6 1/2in.

US\$1,000 - 2,000

229  
**A RETRO LADY'S 14K GOLD INTEGRAL BRACELET WRISTWATCH, MARCUS & CO., CIRCA 1940**  
 mechanical movement; dial signed Marcus & Co; gross weight approximately: 54 grams; width: 17mm; length: 7 1/4in.

US\$3,000 - 5,000

230  
**A PAIR OF DIAMOND AND 18K GOLD EAR CLIPS, RACHEL EPSTEIN FOR CARVIN FRENCH**  
 signed RE; estimated total diamond weight: 1.00ct; length: 1in.

US\$3,000 - 5,000

231  
**A RUBY, DIAMOND AND 14K BI-COLOR GOLD BOUQUET BROOCH**  
 gross weight approximately: 29 grams; dimensions: 2 7/8 x 2 3/8in.

US\$1,200 - 1,800

232  
**A PAIR OF RUBY AND 18K GOLD EAR CLIPS AND BROOCH, CARTIER AND TIFFANY & CO.**  
 ear clips signed Cartier, Inc, with maker's mark, brooch signed Tiffany & Co; lengths: 1 5/8in. and 5/8in.

US\$1,000 - 1,500

233  
**AN AQUAMARINE, DIAMOND AND 14K GOLD BROOCH**  
 oval mixed-cut aquamarine approximately 28 x 24.5 x 13mm; estimated total diamond weight: 1.05cts; length: 1 1/4in.

US\$2,000 - 3,000



234



235



236



238



237



239

234  
**A CITRINE, DIAMOND AND 18K GOLD CONVERTABLE NECKLACE/BROOCH**  
rectangular fancy-cut citrine approximately 15.4 x 12.8 x 11.3mm; central ornament detaches as brooch; *estimated total diamond weight: 7.50cts; gross weight approximately: 101 grams; length: 14 1/4in; brooch length: 3 1/2in.*

US\$6,000 - 8,000

**PROPERTY FROM AN OREGON ESTATE**

235  
**A RUBY, DIAMOND AND 18K BI-COLOR GOLD RING**  
*estimated total diamond weight: 1.90cts; size: 7*

US\$2,000 - 3,000

236  
**A PAIR OF DIAMOND AND 18K GOLD EAR CLIPS**  
*estimated total diamond weight: 3.25cts; length: 3/4in.*

US\$2,000 - 3,000

237  
**A RUBY, DIAMOND AND 14K GOLD BRACELET**  
*weighing approximately: 45 grams; length: 7in.*

US\$3,000 - 5,000

238  
**A DIAMOND, PLATINUM AND 18K GOLD WEDDING SET**  
*estimated total diamond weight: 1.05cts; size: 6*

US\$1,000 - 1,500

239  
**A GEM-SET AND 14K GOLD SLIDE BRACELET**  
*gross weight approximately: 44 grams; length: 7in.*

US\$800 - 1,200



240



241



242



243



244

**PROPERTY OF VARIOUS OWNERS**

**240  
A RUBY, DIAMOND AND 18K BI-COLOR  
GOLD NECKLACE**

*estimated total kite-shaped diamond weight: 0.90ct; length: 30in.*

**US\$2,800 - 3,500**

**241  
A STAR SAPPHIRE, RUBY, DIAMOND  
AND GOLD SCORPION PENDANT/  
NECKLACE**

*center pendant length: 2 1/4in., overall length: 18 1/2in.*

**US\$1,500 - 2,000**

**242  
A COLLECTION OF FOUR DIAMOND,  
MULTI-COLOR SAPPHIRE, ENAMEL AND  
18K GOLD ETERNITY BANDS**

*one pink sapphire, one yellow sapphire, one blue sapphire and one diamond; size: 7 1/4*

**US\$3,000 - 5,000**

**243  
A RUBY, DIAMOND AND 18K WHITE  
GOLD BYPASS RING**

*estimated total diamond weight: 2.20cts; size: 6 1/2*

**US\$2,000 - 3,000**

GIA report #6177893716, dated October 4, 2016, stating the central ruby as: Burmese origin, heated.

**244  
A GARNET, DIAMOND AND 18K GOLD  
BRACELET, MARCO BICEGO**

*signed Marco Bicego Made in Italy; gross weight approximately: 44 grams; length: 7 1/4in., width: 1 1/4in.*

**US\$2,500 - 3,500**





245



246



247



248



249

**245  
A DIAMOND, CULTURED PEARL, BLACK ONYX, MABÉ PEARL AND 14K GOLD FIVE STRAND NECKLACE**

with interchangeable clasps; pearls approximately 6.0mm to 6.6mm; *estimated total diamond weight: 4.00cts; lengths: 13 1/2in. to 17in.*

**US\$2,000 - 3,000**

**246  
A SAPPHIRE, DIAMOND AND 18K WHITE GOLD RING**

reverse set oval mixed-cut sapphire: 10.71cts; size: 7 3/4

**US\$2,000 - 3,000**

GIA report #1176937519, dated October 31, 2016, stating: Origin Sri Lanka, no indication of heating

**247  
A PAIR OF SAPPHIRE, COLORED DIAMOND, DIAMOND AND WHITE GOLD EAR CLIPS**

two heart-shaped sapphires approximately: 8.4 x 6.3mm; *estimated total diamond weight: 1.20cts; length: 1/2in. (colored diamonds untested for origin of color)*

**US\$2,500 - 3,500**

**248  
AN 18K GOLD AND TURQUOISE BROOCH**

*gross weight approximately 35 grams; length: 2 3/4in.*

**US\$1,000 - 1,500**

**249  
A PAIR OF DIAMOND, SAPPHIRE AND PLATINUM EAR PENDANTS**

*estimated total weight of two central round brilliant-cut diamonds: 2.10cts; estimated total remaining diamond weight: 0.70ct; length: 1 1/4in.*

**US\$3,000 - 5,000**



250

251

253



252



254



255

**250  
A GEM-SET, DIAMOND AND 18K GOLD  
NECKLACE, ELIZABETH TAYLOR  
COLLECTION**

featuring blue topaz, citrine and rose quartz;  
*signed Taylor; estimated total diamond  
weight: 4.00cts; length: 15 1/2in.*

**US\$4,000 - 6,000**

**251  
A PAIR OF DIAMOND AND 18K ROSE  
GOLD HOOP EARRINGS**

*estimated total diamond weight: 4.85cts;  
diameter: 1 1/4in.*

**US\$3,000 - 5,000**

**252  
A TOURMALINE, PINK SAPPHIRE,  
DIAMOND AND 18K ROSE GOLD  
BUTTERFLY NECKLACE**

total diamond weight: 1.45ct; *signed  
Pejmani; pendant: 1 3/4 x 1 1/8in; length: 17  
1/2in.*

**US\$3,500 - 5,000**

**253  
A DIAMOND AND 18K ROSE AND WHITE  
GOLD RING**

total diamond weight: 1.79cts; *size: 7*

**US\$1,000 - 2,000**

**254  
AN 18K GOLD AND DIAMOND FLOWER  
BROOCH, TIFFANY & CO.**  
*signed Tiffany & Co.; dimensions: 1 3/4 x 2in.*

**US\$1,000 - 1,500**

**255  
A COLORED DIAMOND AND 18K ROSE  
GOLD LONG CHAIN**  
total diamond weight: 35.20cts; *gross weight  
approximately: 30 grams; length: 61in.  
(brown diamonds untested for origin of color)*

**US\$10,000 - 15,000**



256



257



258



259



260



256

**A PADPARADSCHA SAPPHIRE, BLUE SAPPHIRE AND 18K GOLD RING**

cushion mixed-cut Padparadscha sapphire approximately 7.1 x 6.4 x 5.11mm; size: 7 3/4

**US\$6,000 - 8,000**

AGL report #1084775, dated June 28, 2017, stating: Natural Corundum, Padparadscha Sapphire, origin Ceylon (Sri Lanka), heat enhancement: none, clarity enhancement: none

257

**A RUTILATED QUARTZ, DIAMOND AND 18K GOLD FLOWER RING**

size: 7

**US\$1,500 - 2,500**

258

**A SET OF RUTILATED QUARTZ, DIAMOND AND 18K GOLD PENDANT/ NECKLACE AND EAR PENDANTS**

estimated total diamond weight: 1.00ct; necklace length: 15in., pendant length: 1in, earrings: 2in.

**US\$2,000 - 3,000**

259

**A PAIR OF DIAMOND AND 18K BI-COLOR GOLD EAR PENDANTS**

estimated total diamond weight: 2.25cts; gross weight approximately: 25 grams; dimensions: 3 1/8 x 1 5/8in.

**US\$3,000 - 5,000**

260

**A COLORED DIAMOND AND TITANIUM CUFF BANGLE BRACELET**

estimated total brown diamond weight: 2.35cts; inner diameter: 2 5/16in. (diamonds untested for origin of color)

**US\$3,000 - 5,000**



261



262



263



264



265



266

261  
**A MULTI-COLOR SAPPHIRE, DIAMOND AND 18K WHITE GOLD TORQUE NECKLACE**

*estimated total sapphire weight: 18.90cts; length: 14 3/4in.*

**US\$5,000 - 7,000**

262  
**A RUBY, DIAMOND AND 18K WHITE GOLD BAND**

*size: 8 1/4*

**US\$1,000 - 1,500**

263  
**AN AMETHYST AND 18K WHITE GOLD "PIRAMIDE" RING, BVLGARI**

*signed Bvlgari; size: 5*

**US\$1,000 - 1,500**

264  
**A RUBY, DIAMOND AND PLATINUM RING, TIFFANY & CO.**

*round ruby approximately: 6.0 x 6.0 x 3.8mm; signed Tiffany & Co.; size: 8 1/2*

**US\$3,000 - 5,000**

265  
**A DIAMOND, PINK SAPPHIRE AND PLATINUM RING**

*central emerald-cut diamond: 0.85ct; rectangular-cut sapphires approximately: 6.0 x 4.0 x 2.85mm; estimated total diamond weight: 1.50cts; size 6 1/2 shy*

**US\$4,000 - 6,000**

*Accompanied by GIA report #2145707543, dated June 5, 2012, stating the emerald-cut diamond as: G color, VS1 clarity.*

266  
**A PAIR OF DIAMOND, PINK SAPPHIRE AND 18K WHITE GOLD EAR PENDANTS**

*set with four pear-shaped pink sapphires; estimated total diamond weight: 1.60cts; length: 1 1/8in.*

**US\$2,000 - 3,000**



267



268



269



271



270



272

267  
**A PAIR OF DYED BLUE CHALCEDONY, DIAMOND AND 18K WHITE GOLD DROP EARRINGS**  
faceted chalcedony briolettes; estimated total diamond weight: 1.00ct; length: 2 1/4in.

US\$1,000 - 1,500

268  
**A PAIR OF DIAMOND AND 18K WHITE GOLD EARRINGS**  
estimated total diamond weight: 4.00cts; dimensions: 1 5/8 x 1 1/8in.

US\$4,000 - 6,000

269  
**A RUBY, DIAMOND, TITANIUM AND 18K WHITE GOLD FLOWER RING**  
flower diameter: 1 1/2in.; size: 6 1/2

US\$2,500 - 3,500

270  
**A CAT'S EYE CHRYSOBERYL, DIAMOND AND 18K WHITE GOLD RING**  
oval cabochon cat's eye chrysoberyl weighing 5.52cts; size: 7

US\$1,000 - 1,500  
To be sold without reserve

271  
**A PERIDOT, DIAMOND AND 18K WHITE GOLD RING**  
oval mixed-cut peridot approximately 17.7 x 11.6 x 8.2mm; estimated total diamond weight: 1.00ct; size: 7 1/4

US\$2,800 - 3,200

272  
**A DIAMOND, RUBY, ENAMEL AND 18K WHITE GOLD RING**  
estimated total diamond weight: 1.82cts; estimated total ruby weight: 4.31cts; size: 7

US\$5,000 - 7,000



273



274



275



276



277



278

273  
**A CULTURED PEARL, DIAMOND AND 14K GOLD FOUR STRAND NECKLACE**  
pearls approximately 6.0mm to 6.5mm;  
lengths: 17in. to 20in.

US\$1,000 - 1,500

274  
**A DIAMOND, PLATINUM AND 18K GOLD BROOCH, MARCUS & CO.**  
signed Marcus & Co.; estimated total  
diamond weight: 7.35cts; gross weight  
approximately: 35 grams; dimensions: 3 x 1  
1/2in.

US\$3,000 - 5,000

275  
**A GEM-SET AND GOLD RING**  
gross weight approximately: 27 grams; size:  
8 3/4

US\$1,000 - 1,500

**PROPERTY OF A LADY**

276  
**A PAIR OF DIAMOND AND 18K GOLD PENDANT EARRINGS**  
estimated total diamond weight: 1.85cts;  
gross weight approximately: 26 grams;  
length: 2 1/2in.

US\$3,000 - 5,000

**PROPERTY OF VARIOUS OWNERS**

277  
**A QUARTZ, DIAMOND, GEM-SET AND 14K GOLD RING**  
centering a cushion mixed-cut quartz  
approximately: 19.3 x 13.6 x 11.0mm; size:  
8 1/2

US\$1,000 - 1,500

278  
**AN 18K WHITE GOLD CHARM BRACELET, CARTIER, BVLGARI AND JUDITH RIPKA**  
suspending nine gem-set, 18k, platinum and  
silver charms, signed Cartier, Bvlgari and  
Judith Ripka; gross weight approximately: 42  
grams; length: 7 1/4in.

US\$2,000 - 3,000



279

280

281



282



283



284

279

**A DIAMOND AND 18K GOLD NECKLACE WITH EARRINGS, FRENCH**

*with French assay and maker's marks; estimated total diamond weight: 7.90cts; gross weight approximately: 43 grams; necklace length: 17in., earrings: 1 1/2in.*

US\$7,000 - 9,000

280

**A DIAMOND, DEMANTOID GARNET, RUBY AND 18K GOLD SALAMANDER BROOCH**

*dimensions: 2 3/4 x 1in.*

US\$3,000 - 4,000

281

**A DIAMOND AND 14K BI-COLOR GOLD FLOWER RING**

*central round brilliant-cut diamond approximately 1.30cts; estimated remaining diamond weight: 2.20cts; size: 6 1/2*

US\$1,500 - 2,500

282

**A DIAMOND AND 18K GOLD CUFF BRACELET, FRENCH**

*with French assay and maker's marks; estimated total diamond weight: 1.25cts; weighing approximately: 83 grams; diameter: 2 3/4in.*

US\$4,000 - 6,000

283

**A TOPAZ, DIAMOND AND 18K GOLD RING**

*centering a rectangular step-cut topaz estimated weight: 19.95cts; size: 5 1/2*

US\$1,500 - 2,500

**PROPERTY OF A TEXAS LADY**

284

**A PAIR OF GEM-SET, DIAMOND AND GOLD EARRINGS**

*length: 1 7/8in.*

US\$1,000 - 1,500



285

286



287



288

289



**PROPERTY OF ANOTHER OWNER**

285  
**A MANDARIN GARNET, TFAVORITE GARNET AND 18K GOLD SNAKE EAR CLIPS AND RING SET, GIOIA**

*earrings signed Gioia; estimated total garnet weight: 17.45cts; gross weight approximately: 41 grams; ring size: 6 3/4, earring length: 1 1/4in.*

**US\$4,000 - 6,000**

**PROPERTY OF A TEXAS LADY**

286  
**A DIAMOND AND 18K GOLD COLLAR NECKLACE**

*estimated total diamond weight: 4.30cts; gross weight approximately: 160 grams; length: 15in.*

**US\$5,000 - 7,000**

287  
**AN EMERALD, DIAMOND AND 18K GOLD RING**

*square-cut emerald approximately: 6.4 x 6.2 x 5.1mm; size: 6 1/2*

**US\$1,500 - 2,500**

288  
**A FANCY COLORED DIAMOND, 18K YELLOW AND BLACKENED WHITE GOLD RING**

*oval modified brilliant-cut fancy intense yellow diamond: 1.01cts; size: 6 1/2*

**US\$4,000 - 6,000**

GIA report #5166279874, dated December 20, 2013, stating: Natural Fancy Intense Yellow color, VS2 clarity

289  
**A DIAMOND, 18K GOLD AND PLATINUM BRACELET**

*estimated total diamond weight: 2.50cts; gross weight approximately: 63 grams; length: 7 1/2in.*

**US\$2,000 - 3,000**





290



291



292



293



294

290  
**A CULTURED PEARL, DIAMOND AND 18K GOLD CONVERTABLE TASSEL/ TORSADE NECKLACE**  
 pearls approximately 3.9mm; *estimated total diamond weight: 5.25cts; lengths: 29 and 15in.*

US\$2,500 - 3,500

291  
**AN EMERALD, DIAMOND AND 18K GOLD RING**  
 marquise emerald approximately 8.6 x 3.8 x 2.7mm; *estimated total diamond weight: 1.50cts; size: 4 3/4*

US\$1,000 - 1,500

292  
**A FANCY COLOR DIAMOND, DIAMOND AND PLATINUM THREE STONE RING**  
 fancy yellow emerald-cut diamond: 1.70cts; remaining emerald-cut diamonds: 0.92ct; *size: 6 1/2 shy*

US\$9,000 - 12,000

GIA report #2155625641, dated August 20, 2013, stating the central diamond as: Natural Fancy Yellow, VS1 clarity.

GIA reports #2151150703 and 2151150708, dated December 10, 2012, stating the 0.47ct and 0.45ct as: G color, VVS1 clarity.

293  
**A PAIR OF EMERALD AND DIAMOND EAR PENDANTS**  
 two pear-shaped mixed-cut emeralds: 4.97cts; total diamond weight: 2.58cts; *length: 1 1/8in.*

US\$2,000 - 3,000

294  
**A DIAMOND, EMERALD AND 18K GOLD BROOCH, TIFFANY & CO.**  
*signed Tiffany, with signed pouch; weighing approximately: 36 grams; length: 2 3/4in.*

US\$3,000 - 5,000



295

296

297



298

299



300

295  
**A DIAMOND AND 14K WHITE GOLD RING**

*estimated total diamond weight: 2.20cts; size: 7 3/4*

**US\$1,500 - 2,000**

296  
**A DIAMOND, COLORED DIAMOND AND 18K WHITE GOLD NECKLACE**

*estimated total diamond weight: 5.00cts; lengths: 16in. and 17 1/2in., adjustable (brown diamonds untested for origin of color)*

**US\$3,000 - 5,000**

297  
**A DIAMOND AND WHITE GOLD WEDDING SET**

*square-cut diamond approximately: 1.00ct; estimated total remaining diamond weight 1.10cts; size: 5 1/2*

**US\$1,500 - 2,000**

298  
**A PAIR OF TOPAZ, DIAMOND AND 18K WHITE GOLD EAR PENDANTS, BOUCHERON**

*signed Boucheron, with French assay mark, no. CS2933; with signed folder; length: 1 3/4in.*

**US\$3,500 - 4,500**

299  
**A DIAMOND, TURQUOISE, ENAMEL AND 18K WHITE GOLD RING**

*oval-shaped turquoise approximately 17.3 x 13.1mm; estimated total diamond weight: 4.40cts; gross weight approximately: 25 grams; size: 7 1/2*

**US\$4,000 - 6,000**

300  
**A PAIR OF DIAMOND, BLACK ONYX AND 18K WHITE GOLD DROP EARRINGS**

*estimated total diamond weight: 1.25cts; length: 2 1/4in.*

**US\$1,500 - 2,500**



301



302



303



304



305



306

301  
**A BLUE TOPAZ, DIAMOND AND 18K  
WHITE GOLD PENDANT/NECKLACE**  
*pendant length: 2 5/8in.; chain length: 16in.*

**US\$800 - 1,200**

302  
**A STAR SAPPHIRE, SAPPHIRE,  
DIAMOND AND 18K WHITE GOLD RING**  
*oval cabochon star sapphire approximately  
16 x 9.3 x 7.0mm; size: 6 1/4*

**US\$2,000 - 3,000**

303  
**AN OPAL, DIAMOND AND 18K WHITE  
GOLD RING**  
*estimated total diamond weight: 1.40cts;  
size: 6 3/4*

**US\$1,000 - 1,500**

304<sup>Y</sup>  
**A PAIR OF CORAL, DIAMOND AND 14K  
WHITE GOLD DROP EARRINGS**  
*estimated total diamond weight: 3.85cts;  
length: 2 1/8in.*

**US\$1,500 - 2,000**

305  
**A PAIR OF TURQUOISE, DIAMOND AND  
18K GOLD EAR CLIPS**  
*oval cabochon turquoise approximately 16  
x 11.9 x 5.5mm and 15.6 x 12.3 x 5.6mm;  
signed Pajmani; estimated total diamond  
weight: 1.50cts; length: 3/4in.*

**US\$1,800 - 2,500**

306  
**A DIAMOND, COLORED DIAMOND AND  
18K WHITE GOLD NECKLACE**  
*estimated total diamond weight: 8.75cts;  
gross weight approximately: 25 grams;  
length: 16in. (brown diamonds untested for  
origin of color)*

**US\$4,000 - 6,000**



307

307  
**A DIAMOND, RUBY, EMERALD, SAPPHIRE AND 18K GOLD NECKLACE**  
*estimated total diamond weight: 10.45cts; gross weight approximately: 91 grams; length: 22in.*

**US\$8,000 - 10,000**



308



310



311



309



312

309  
**A PAIR OF EMERALD, DIAMOND AND WHITE GOLD DROP EARRINGS**  
*pear-shaped emeralds approximately: 10.8 x 5.45 x 2.5 and 11.2 x 5.7 x 3.7mm; estimated total diamond weight: 1.50cts; length: 1 1/4in.*

**US\$800 - 1,200**

310  
**A SAPPHIRE, DIAMOND AND PLATINUM RING**  
*central oval mixed-cut sapphire approximately 8.35 x 7.1 x 3.79mm; size: 6 shy*

**US\$1,500 - 2,500**



311  
**A DIAMOND AND PLATINUM SOLITAIRE RING**

*central transitional round brilliant-cut diamond approximately: 0.90ct; size: 5 1/4*

**US\$1,800 - 2,500**

312  
**A DIAMOND, RUBY AND 14K BI-COLOR GOLD BRACELET AND BROOCH SET**  
*estimated total diamond weight: 6.00cts; gross weight approximately: 134 grams; bracelet diameter: 2 1/4in; brooch length: 1 1/4in.*

**US\$5,000 - 7,000**



313



314



315



316



317



318

313<sup>Y</sup>  
**A DIAMOND, RUBY, CORAL, MOTHER-OF-PEARL AND GOLD LOVE BIRDS PENDANT/NECKLACE**

*gross weight approximately: 26 grams; length: 18 1/2in.*

**US\$1,500 - 2,000**

314  
**AN 18K GOLD AND EMERALD FISH CLIP BROOCH, DAVID WEBB**

*signed Webb; gross weight approximately: 33 grams; length: 2 1/2in.*

**US\$2,000 - 3,000**

315  
**A PAIR OF DIAMOND, RUBY, SAPPHIRE AND 18K GOLD RINGS**

*estimated total diamond weight: 1.30cts; sizes: 5 3/4*

**US\$1,500 - 2,500**

316  
**A CARVED EMERALD, CULTURED PEARL, DIAMOND, ENAMEL AND GOLD MUGHAL STYLE PENDANT**

*emerald approximately: 30 x 24.5 x 11mm; pearl approximately: 12.0 x 10.4mm; dimensions: 3 1/2 x 1 1/8in.*

**US\$2,500 - 3,500**

317  
**A CABOCHON EMERALD, DIAMOND, PLATINUM AND GOLD RING**

*heart-shaped double cabochon emerald weighing: 4.99cts; size: 6 1/4*

**US\$5,500 - 6,500**

*GIA report #2185226939, dated March 27, 2017, stating: Colombian origin, moderate clarity enhancement (F2)*

318  
**A DIAMOND AND 18K GOLD BRACELET**

*estimated total diamond weight: 2.60cts; gross weight approximately: 73 grams; length: 7in.*

**US\$3,500 - 4,500**



319



320



321



322



323

324



319  
**A DIAMOND, SAPPHIRE AND 18K GOLD RING**  
*estimated total diamond weight: 2.30cts; size: 7*

**US\$1,800 - 2,500**

320  
**A SAPPHIRE, DIAMOND AND 18K GOLD RING**  
*oval-shaped sapphire approximately 7.5 x 6.18 x 3.59mm; estimated total diamond weight: 1.40cts; size: 6*

**US\$1,000 - 1,500**

321  
**A LAPIS LAZULI AND GOLD BROOCH**  
*gross weight approximately: 34 grams; length: 3in.*

**US\$800 - 1,200**

322  
**A DIAMOND, RUBY AND 18K GOLD SNAKE RING**  
*estimated total diamond weight: 1.50cts; size: 6 1/2*

**US\$1,000 - 2,000**

323  
**A LAPIS LAZULI AND 18K GOLD NECKLACE**  
*gross weight approximately: 133 grams; length: 28 3/4in.*

**US\$4,000 - 6,000**

324  
**AN 18K GOLD BRACELET**  
*weight approximately: 78 grams; length: 7 1/2in.*

**US\$2,000 - 2,500**



325



326



327



328



329



330

325  
**A DIAMOND, LAPIS LAZULI AND 18K GOLD TWIST BRACELET, BULGARI**  
*signed Bvlgari; estimated total diamond weight: 1.35cts; gross weight approximately: 67 grams; length: 8in.*

US\$2,000 - 3,000

326  
**A DIAMOND, SAPPHIRE AND 18K BICOLOR GOLD LONG CHAIN**  
*estimated total diamond weight: 5.00cts; estimated total sapphire weight: 45.85cts; gross weight approximately: 36 grams; length: 61in.*

US\$2,500 - 3,500

327  
**A DIAMOND AND 18K TRI-COLOR GOLD 'C DE CARTIER' BAND, CARTIER**  
*signed Cartier, no. 162280.47; size: 5, adjustable*

US\$800 - 1,200

328  
**A RUBY, DIAMOND, ENAMEL AND 18K GOLD OWL CLIP BROOCH, CIRCA 1970**  
*gross weight approximately: 50 grams; dimensions: 3 1/2 x 2 1/2in.*

US\$3,000 - 5,000

329  
**A SAPPHIRE, DIAMOND AND GOLD RING**  
*oval-shaped sapphire approximately 11.4 x 9.3 x 7.5mm; size: 6 1/4*

US\$2,500 - 3,500

330  
**A DIAMOND, LAPIS LAZULI AND 18K GOLD 'V' CUFF BANGLE BRACELET, OSCAR HEYMAN**  
*with makers mark for Oscar Heyman, no. 84814; gross weight approximately: 33 grams; diameter: 2 1/2in.*

US\$3,000 - 5,000



331



332



333



334



335



336

331  
**A RUBY, SAPPHIRE, 18K GOLD AND SILVER MINAUDIÈRE WITH FITTED SILK BAG, FRENCH**

*with maker's marks and French assay marks; gross weight approximately: 509 grams; dimensions: 5 1/8 x 3 3/8 x 3/4in.*

**US\$1,500 - 2,500**

332  
**A RUTILATED QUARTZ, DIAMOND AND 18K GOLD RING**

*oval cabochon rutilated quartz weighing 42.80cts; surrounded by a diamond-set halo; size: 6 1/2*

**US\$1,800 - 2,500**

333  
**A PAIR OF SAPPHIRE AND 18K GOLD BELL MOTIF CUFFLINKS, WINSTON**  
*composed of calibr -cut sapphires; signed Winston*

**US\$1,000 - 2,000**

334  
**A RETRO DIAMOND, SAPPHIRE AND 14K GOLD BRACELET, CIRCA 1935**  
*estimated total diamond weight: 1.50cts; gross weight approximately: 84 grams; length: 8in.*

**US\$3,000 - 5,000**

335  
**A SAPPHIRE, DIAMOND AND 18K GOLD LINE BRACELET, TIFFANY & CO.**  
*signed T&C; estimated total diamond weight: 2.00cts; length: 7in.*

**US\$2,500 - 3,500**

336  
**A SAPPHIRE AND PLATINUM RING**  
*central rectangular step-cut sapphire approximately 6.2 x 5.2 x 3.6mm, flanked by two triangular step-cut sapphires approximately 6.2 x 5.2 x 3.2mm; size: 5 3/4*

**US\$1,500 - 2,000**





337



339



340



338



341



342

337  
**A DIAMOND AND 14K GOLD PENDANT-  
ENHANCER WITH OMEGA NECKLACE**  
*estimated total diamond weight: 1.10cts;  
gross weight approximately: 56 grams;  
pendant length: 7/8in.; necklace length: 17  
3/4in.*

US\$3,000 - 4,000

338  
**A LADY'S 18K GOLD AND OPAL MOSAIC  
BRAIDED INTEGRAL BRACELET  
WRISTWATCH, BUECHE-GIROD**  
*mechanical movement; dial and movement  
signed; gross weight approximately: 45  
grams; case width: 2.7mm; length: 6 5/8in.*

US\$1,500 - 2,500

339  
**A PAIR OF CARVED JADEITE JADE,  
DIAMOND AND 18K GOLD EAR CLIPS,  
DAVID WEBB**  
*signed Webb; gross weight approximately:  
28 grams; length: 1 3/8in.*

US\$3,000 - 5,000

340  
**AN ENAMEL AND 18K GOLD LOVE BIRD  
JABOT BROOCH, CARTIER, FRENCH**  
*signed Cartier Inc, Made in France, no.  
58629; length: 2in.*

US\$4,000 - 6,000

341  
**AN AQUAMARINE, SAPPHIRE, DIAMOND  
AND 18K GOLD RING, PALOMA  
PICASSO FOR TIFFANY & CO., 1980**  
*signed Paloma Picasso, Tiffany & Co.;  
estimated total diamond weight: 1.20cts;  
size: 5 3/4*

US\$2,200 - 2,800

342  
**A GREEN TOURMALINE, CITRINE AND  
18K GOLD RING**  
*size: 7*

US\$800 - 1,200



344



343



345



346



348



347

**PROPERTY OF A MARYLAND COLLECTION**

343  
**A PAIR OF DIAMOND AND 18K WHITE GOLD EARRINGS**  
*unsigned, attributed to Norman Silverman; estimated total diamond weight: 2.50cts; diameter: 5/8in.*

**US\$1,500 - 2,500**

344  
**A DIAMOND AND 18K GOLD NECKLACE, GREECE**  
*estimated total diamond weight: 3.50cts; gross weight approximately: 167 grams; length: 15in., with 3in. extender*

**US\$6,000 - 9,000**

345  
**AN OPAL, DIAMOND AND 10K GOLD RING**  
*opal approximately: 20 x 15mm; estimated total diamond weight: 1.25cts; size: 8*

**US\$2,500 - 3,500**

346  
**A PAIR OF CULTURED PEARL AND 18K WHITE GOLD STUD EARRINGS**  
*pearls approximately 11.9 and 11.6mm.*

**US\$1,000 - 1,500**

347  
**A GEM-SET AND 18K GOLD RAINBOW BRACELET**  
*featuring square step cut amethyst, citrine, peridot, tourmaline and iolite; length: 7in.*

**US\$3,000 - 5,000**

348  
**A DIAMOND AND PLATINUM BAR BROOCH, CIRCA 1930**  
*estimated total diamond weight: 1.50cts; length: 2 1/2in.*

**US\$1,200 - 1,800**



349

**349  
A CULTURED PEARL, DIAMOND AND  
14K GOLD NECKLACE**

pearls approximately 14.2mm to 12.2mm;  
length: 19in.

**US\$8,000 - 12,000**

**350  
A GEM-SET, DIAMOND AND 18K WHITE  
GOLD NECKLACE**

including amethyst, blue topaz and citrine;  
estimated total diamond weight: 2.55cts;  
gross weight approximately: 87 grams;  
length: 18in.

**US\$3,000 - 5,000**

351

**351  
A PAIR OF DIAMOND AND 14K WHITE  
GOLD EAR PENDANTS**

estimated total diamond weight: 2.30cts;  
length: 1 1/2in.

**US\$1,200 - 1,800**

352

**352  
A DIAMOND, SYNTHETIC SAPPHIRE  
AND PLATINUM BRACELET, CIRCA 1925**

estimated total diamond weight: 2.00cts;  
length: 7 1/8in.

**US\$1,000 - 1,500**

353

**353  
A PAIR OF DIAMOND AND PLATINUM  
DROP EARRINGS**

estimated total diamond weight: 2.00cts;  
length: 7/8in.

**US\$1,500 - 2,500**

354

**354  
A DIAMOND, BLACK ONYX AND  
PLATINUM-TOPPED GOLD BROOCH/  
PENDANT**

central old European-cut diamond weighing  
approximately: 1.05cts; estimated total  
remaining diamond weight: 1.15cts; length:  
2in.

**US\$2,000 - 3,000**



**PROPERTY OF VARIOUS OWNERS**

**355  
A LADY'S DIAMOND AND PLATINUM  
INTEGRAL BRACELET WRISTWATCH,  
HAMILTON**

mechanical movement, *dial and movement signed*; case no. 24996; *estimated total diamond weight: 4.00cts; gross weight approximately: 38 grams; case: 14 x 14mm; length: 7in.*

**US\$2,000 - 3,000**

**356  
AN AQUAMARINE, DIAMOND AND 14K  
GOLD PENDANT**

pear-shaped aquamarine approximately 36.50 x 19.25 x 17.5mm; accompanied by attachable ring mount; *estimated total diamond weight: 2.00cts; gross weight approximately: 28 grams; length: 1 3/4in.*

**US\$5,000 - 7,000**

**357  
AN OPAL, ROCK CRYSTAL QUARTZ AND  
9K GOLD NECKLACE**

opal beads approximately 11.6 to 4.2mm, alternating with faceted rock crystal quartz rondelles; *length: 23 7/8in.*

**US\$1,000 - 1,500**

**358  
A SAPPHIRE, DIAMOND AND 18K WHITE  
GOLD RING**

central rectangular step-cut sapphire approximately 6.7 x 4.7 x 3.45mm; *estimated total diamond weight: 1.25cts; size: 5 1/4*

**US\$2,200 - 2,800**

**359  
AN ART DECO SAPPHIRE, DIAMOND,  
PLATINUM AND 18K GOLD BROOCH,  
J.E. CALDWELL**

oval-shaped sapphire approximately 7.7 x 6.2 x 5.2mm; *signed JEC&Co, no. J-1485; estimated total diamond weight: 4.55cts; length: 2 1/8in.*

**US\$4,000 - 6,000**

**360  
A DIAMOND AND 18K WHITE GOLD  
BROOCH**

*estimated total diamond weight: 3.95cts; length: 2 1/4in.*

**US\$1,800 - 2,500**



361

362

363

365

364

366

361  
**A DIAMOND AND PLATINUM NECKLACE**  
*estimated total diamond weight: 10.00cts;  
 gross weight approximately: 36 grams;  
 length: 16in.*

**US\$4,000 - 6,000**

362  
**A COLORED DIAMOND, TSAVORITE  
 GARNET, SAPPHIRE AND 18K WHITE  
 GOLD RING**  
*width: 1 1/4in.; size 6 1/2 (colored diamonds  
 untested for origin of color)}*

**US\$1,200 - 1,800**

363  
**A LADY'S DIAMOND AND WHITE  
 GOLD INTEGRAL BRACELET  
 WRISTWATCH, FRENCH**  
*mechanical movement; unsigned, with  
 French assay marks on case; estimated  
 total diamond weight: 6.45cts; gross weight  
 approximately: 40 grams; diameter: 21.5mm;  
 length: 7in.*

**US\$1,500 - 2,500**

364  
**A TOURMALINE, DIAMOND, 18K GOLD  
 AND PLATINUM RING**  
*central rectangular step-cut green tourmaline  
 approximately 16.9 x 12.6 x 7.7mm;  
 estimated total diamond weight: 1.20cts;  
 size: 5 3/4*

**US\$1,000 - 1,500**

365  
**A LADY'S DIAMOND AND 18K  
 WHITE GOLD INTEGRAL BRACELET  
 WRISTWATCH, BAUME & MERCIER**  
*mechanical movement; dial signed; case no.  
 285034 36587; gross weight approximately:  
 46.7 grams; diameter: 24mm; length: 6  
 3/4in.*

**US\$1,000 - 1,500**

366  
**A PAIR OF CHALCEDONY, SAPPHIRE  
 AND 18K GOLD EAR CLIPS, VALENTIN  
 MAGRO**  
*signed Valentin Magro; gross weight  
 approximately: 34 grams; length: 1in.*

**US\$1,200 - 1,800**



367



368



369



371

370

**367  
A DIAMOND, ENAMEL AND SILVER-TOPPED GOLD DOG BROOCH, 19TH CENTURY**

set throughout with rose-cut diamonds;  
*length: 1 3/4in.*

**US\$2,500 - 3,500**

**368  
A PAIR OF NATURAL PEARL, DIAMOND AND PLATINUM EARRINGS**

pearls approximately 9.2mm and 8.5mm;  
*length: 1 3/8in.*

**US\$7,000 - 9,000**

GCS London UK report #5775-895, dated October 31, 2014, stating: Natural Saltwater Pearls

**369  
A DIAMOND, EMERALD AND TRI-COLOR GOLD SHAGREEN CUFF BRACELET**

rectangular step-cut emerald approximately: 8.3 x 6.5mm, and two heart-shaped mixed cut emeralds approximately: 6.8 x 6.2mm;  
*diameter: 2 3/8in., width: 2in.*

**US\$2,000 - 3,000**

**370  
A BAROQUE FRESHWATER CULTURED PEARL, BLACK SPINEL AND 14K WHITE GOLD NECKLACE**

cultured pearls approximately 13.0mm to 12.0mm; *length: 49in.*

**US\$800 - 1,200**

**371  
A CULTURED PEARL, DIAMOND AND 18K WHITE GOLD NECKLACE**

graduating pearls approximately 15.5mm to 12.0mm; *length: 18 1/2in.*

**US\$5,000 - 7,000**

**372  
A ROCK CRYSTAL QUARTZ, DIAMOND, ENAMEL AND 18K WHITE GOLD BANGLE BRACELET, ITALIAN**

*estimated total diamond weight: 1.10cts; gross weight approximately: 82 grams; diameter: 2 1/4in.*

**US\$2,000 - 3,000**



372



374



373



375



376



377



378

373  
**A DIAMOND AND 18K WHITE GOLD RING**  
center old mine-cut diamond approximately: 1.20cts; *estimated total remaining diamond weight: 1.20cts; size: 7 1/2*

**US\$4,000 - 6,000**

374  
**A DIAMOND AND 18K WHITE GOLD NECKLACE**  
total diamond weight: 43.68cts; *gross weight approximately: 65 grams; length: 16 1/2in.*

**US\$20,000 - 30,000**

375  
**A DIAMOND, COLORED DIAMOND AND 18K WHITE GOLD SPIRAL RING**  
centering a round brilliant-cut diamond weighing 1.29cts; *estimated remaining total black diamond weight: 1.50cts; size 7 1/4+ (black diamonds untested for origin of color)*

**US\$2,000 - 3,500**

376  
**AN ART DECO CARVED RUBY, DIAMOND AND PLATINUM CLIP BROOCH, CIRCA 1930**  
*dimensions: 1 1/4 x 1 1/8in.*

**US\$2,000 - 3,000**

377  
**A DIAMOND AND PLATINUM ETERNITY RING**  
*estimated total diamond weight: 7.50cts; size: 8 1/4*

**US\$4,000 - 6,000**

**PROPERTY FROM THE JOYCE B. DOHENY TRUST**

378  
**A RUBY AND WHITE GOLD MONEY CLIP**  
sugarloaf ruby cabochon approximately 9.0 x 8.0 x 4.8mm; *length: 2 1/4in.*

**US\$2,000 - 3,000**



380

383

381

384

382

379

**PROPERTY OF VARIOUS OWNERS**

379  
**A DIAMOND AND PLATINUM FLOWER BROOCH**  
*estimated total diamond weight: 3.25cts; length: 1 1/2in.*

**US\$3,000 - 5,000**

380  
**A DIAMOND, RUBY AND 18K BI-COLOR GOLD FLOWER BRACELET**  
*total diamond weight: 6.53cts, total ruby weight: 2.66cts; gross weight approximately 42 grams; adjustable length: 7 1/2in. to 8 1/4in.*

**US\$5,000 - 8,000**

381  
**A MULTI-COLOR SAPPHIRE, DIAMOND AND WHITE GOLD RING**  
*size 6 1/2*

**US\$1,500 - 2,000**

382  
**A DIAMOND AND 18K WHITE GOLD SHOOTING STAR RING**  
*estimated total diamond weight: 3.00cts; size: 7 3/4*

**US\$1,500 - 2,500**

383  
**A DIAMOND AND 18K BI-COLOR GOLD NECKLACE**  
*center heart-shaped diamond: 1.30cts; remaining estimated total diamond weight: 0.88ct; length: 17in.*

**US\$1,500 - 2,000**

384  
**A DIAMOND AND PLATINUM RING**  
*estimated total diamond weight: 1.00ct; size: 7*

**US\$1,000 - 1,500**





385

386



387



388



389



390

385  
**A PAIR OF DIAMOND AND BI-COLOR GOLD FLOWER EAR PENDANTS**  
*estimated total diamond weight: 9.75cts; gross weight approximately: 34 grams; length: 2in.*

US\$1,800 - 2,500

386  
**A DIAMOND AND 14K BI-COLOR GOLD FLOWER NECKLACE**  
*estimated total diamond weight: 16.85cts; gross weight approximately: 87 grams; length: 17 1/4in.*

US\$4,500 - 5,500

387  
**A PAIR OF DIAMOND AND PLATINUM ETERNITY BANDS**  
*estimated total diamond weight: 3.50cts; sizes: 7 1/4 and 7 1/2*

US\$2,000 - 3,000

388  
**A DIAMOND, COLORED DIAMOND AND WHITE GOLD DIE PENDANT NECKLACE**  
*estimated total diamond weight: 2.45cts; pendant: 7/8 x 1/2in., chain length: 18 1/8in. (black diamonds untested for origin of color)*

US\$1,200 - 1,800

389  
**A DIAMOND AND 18K WHITE GOLD BRACELET, JUDITH RIPKA**  
*signed Judith Ripka; estimated total diamond weight: 4.50cts; gross weight approximately: 71 grams; length: 6 3/4in.*

US\$4,500 - 5,500

390  
**A DIAMOND, COLORED DIAMOND AND 14K WHITE GOLD PLAYBOY BUNNY PENDANT**  
*estimated total diamond weight: 14.00cts; gross weight approximately: 65 grams; length: 3in. (colored diamonds untested for origin of color)*

US\$4,500 - 5,500

391





392

**PROPERTY OF A NEW YORK COLLECTOR**

391  
**AN AMBER TORSADE NECKLACE**  
with polished bead toggle clasp; *length: 20in.*

US\$1,000 - 1,500

392  
**PLASTIC BANGLE**

US\$800 - 1,200

**PROPERTY OF ANOTHER OWNER**

393  
**A QUARTZ AND SILVER BELT BUCKLE**  
*dimensions: 4 1/2 x 4 1/4in.*

US\$800 - 1,200



393



394



395

**PROPERTY OF A NEW YORK COLLECTOR**

394  
**AN AMBER TORSADE NECKLACE**  
with polished amber beads and tumbled  
amber; *length: 40in.*

US\$1,000 - 1,500

395  
**A LARGE NATURAL AMBER FREE-FORM  
NECKLACE**

single strand of natural amber nuggets with  
toggle clasp; *length: 22in.*

US\$800 - 1,200

# THE BOTHWELL COLLECTION

Saturday November 11, 2017

Bonhams is proud to announce The Bothwell Collection Auction, to be held at the famed Bothwell Ranch in Woodland Hills, California.

The group is headlined by one of the most influential Grand Prix Cars of all time, the double overhead camshaft, 1913 Peugeot L45, which ran at Indianapolis in 1916 and is acknowledged as the best surviving example of these cars. Compiled by pioneering collector the late Lindley Bothwell, a name synonymous with the hobby since its earliest days, alongside this remarkable Peugeot are early examples of Prinz Heinrich Benz and Mercedes-Simplex, together with numerous pre-war competition and touring cars, automobilia, railwayana and ephemera.

## ENQUIRIES

**Malcolm Barber**

(323) 850 7500

[malcolm.barber@bonhams.com](mailto:malcolm.barber@bonhams.com)

**Rupert Banner**

(212) 461 6515

[rupert.banner@bonhams.com](mailto:rupert.banner@bonhams.com)



# Bonhams

[bonhams.com/bothwell](http://bonhams.com/bothwell)

## ARTS OF THE SAMURAI

Monday October 30, 2pm  
New York

**A RUSSET-IRON TOSEI-GUSOKU**  
Edo period (1615-1868), 18th century  
**\$15,000 - 25,000**

### INQUIRIES

**New York**  
Jeff Olson  
+1 (212) 461 6516  
jeff.olson@bonhams.com

**London**  
Suzannah Yip  
+44 (0)20 7468 8368  
suzannah.yip@bonhams.com



# Bonhams

NEW YORK

[bonhams.com/japanese](https://www.bonhams.com/japanese)

## DIAMOND GRADING

### COLOR

GIA	CIBJO	UK TRADITIONAL
<b>D</b>	Exceptional White +	Finest White
<b>E</b>	Exceptional White	Finest White
<b>F</b>	Rare White +	Fine White
<b>G</b>	Rare White	Fine White
<b>H</b>	White	White
<b>I</b>	Slightly Tinted White	Commercial White
<b>J</b>	Slightly Tinted White	Top Silver Cape
<b>K</b>	Tinted White	Top Silver Cape
<b>L</b>	Tinted White	Silver Cape
<b>M TO N</b>	Tinted Color	Light Cape
<b>O TO R</b>	Tinted Color	Cape
<b>R TO Z</b>	Tinted Color	Dark Cape

### CLARITY

<b>IF</b>	Internally Flawless	No inclusions and only insignificant surface blemishes when viewed under 10X magnification
<b>VVS1 - VVS2</b>	Very Very Slightly Included	Minute inclusions that are incredibly difficult to see under 10X magnification, generally only visible from the back of the stone and may be removed easily by repolishing
<b>VS1 - VS2</b>	Very Slightly Included	Minor inclusions that range from difficult (VS1) to slightly easier (VS2) to see under 10X magnification
<b>SI1 - 2</b>	Slightly Included	Noticeable inclusions that are easy (SI1) or very easy (SI2) to see under 10X magnification
<b>I1 - 3</b>	Obvious Inclusions	Obvious inclusions that are easily visible under 10X magnification and in some cases may even be seen without magnification

## RING SIZES

ENGLISH	METRIC	AMERICAN	FRENCH/JAPANESE
A	37.8252	½	-
A½	38.4237	¾	-
B	39.0222	1	-
B½	39.6207	1¼	-
C	40.2192	1½	-
C½	40.8177	1¾	-
D	41.4162	2	1
D½	42.0147	2¼	2
E	42.6132	2½	-
E½	43.2117	2¾	3
F	43.8102	3	4
F½	44.4087	3¼	-
G	45.0072	3½	5
G½	45.6057	3¾	-
H	46.2042	4	6
H½	46.8027	4¼	-
I	47.4012	4½	7
I½	47.9997	4¾	8
J	48.5982	5	-
J½	49.1967	5¼	9
K	49.7952	5½	10
K½	50.3937	5¾	-
L	50.9922	6	11
L½	51.5907	6¼	-
M	52.1892	6½	12
M½	52.7877	6¾	13
N	53.4660	7	-
N½	54.1044	7¼	14
O	54.7428	7½	15
O½	55.3812	7¾	-
P	56.0196	8	16
P½	56.6580	8¼	-
Q	57.2964	8½	17
Q½	57.9348	8¾	18
R	58.5732	9	-
R½	59.2116	9¼	19
S	59.8500	9½	20
S½	60.4884	9¾	-
T	61.1268	10	21
T½	61.7652	10¼	22
U	62.4026	10½	-
U½	63.0420	10¾	23
V	63.6804	11	24
V½	64.3188	11¼	-
W	64.8774	11½	25
W½	65.4759	11¾	-
X	66.0744	12	26
X½	66.6729	12¼	-
Y	67.2714	12½	-
Y½	67.8699	12¾	-
Z	68.4684	13	-



## CONDITIONS OF SALE

The following Conditions of Sale, as amended by any published or posted notices or verbal announcements during the sale, constitute the entire terms and conditions on which property listed in the catalog shall be offered for sale or sold by Bonhams & Butterfields Auctioneers Corp. and any consignor of such property for whom we act as agent. If live online bidding is available for the subject auction, additional terms and conditions of sale relating to online bidding will apply; see [www.bonhams.com/WebTerms](http://www.bonhams.com/WebTerms) for the supplemental terms. As used herein, "Bonhams," "we" and "us" refer to Bonhams & Butterfields Auctioneers Corp.

1. As used herein, the term "bid price" means the price at which a lot is successfully knocked down to the purchaser. The term "purchase price" means the aggregate of (a) the bid price, (b) a PREMIUM retained by us and payable by the purchaser EQUAL TO 25% OF THE FIRST \$150,000 OF THE BID PRICE, 20% OF THE AMOUNT OF THE BID PRICE ABOVE \$150,000 UP TO AND INCLUDING \$3,000,000, AND 12% OF THE AMOUNT OF THE BID PRICE OVER \$3,000,000, and (c) unless the purchaser is exempt by law from the payment thereof, any Arizona, California, Colorado, Connecticut, Florida, Georgia, Illinois, Massachusetts, Nevada, New Jersey, New York, Pennsylvania, Texas, Virginia, Washington, D.C., Washington state, or other state or local sales tax (or compensating use tax) and other applicable taxes.

2. On the fall of the auctioneer's hammer, the highest bidder shall have purchased the offered lot in accordance and subject to compliance with all of the conditions set forth herein and (a) assumes full risk and responsibility therefor, (b) if requested will sign a confirmation of purchase, and (c) will pay the purchase price in full or such part as we may require for all lots purchased. No lot may be transferred. Any person placing a bid as agent on behalf of another (whether or not such person has disclosed that fact or the identity of the principal) may be jointly and severally liable with the principal under any contract resulting from the acceptance of a bid.

Unless otherwise agreed, payment in good funds is due and payable within five (5) business days following the auction sale. Whenever the purchaser pays only a part of the total purchase price for one or more lots purchased, we may apply such payments, in our sole discretion, to the lot or lots we choose. Payment will not be deemed made in full until we have collected good funds for all amounts due.

Payment for purchases may be made in or by (a) cash, (b) cashier's check or money order, (c) personal check with approved credit drawn on a U.S. bank, (d) wire transfer or other immediate bank transfer, or (e) Visa, MasterCard, American Express or Discover credit, charge or debit card. A processing fee will be assessed on any returned checks. Please note that the amount of cash notes and cash equivalents that can be accepted from a given purchaser may be limited.

The purchaser grants us a security interest in the property, and we may retain as collateral security for the purchaser's obligations to us, any property and all monies held or received by us for the account of the purchaser, in our possession. We retain all rights of a secured party under the California Commercial Code. If the foregoing conditions or any other applicable conditions herein are not complied with, in addition to other remedies available to us and the consignor by law, including without limitation, the right to hold the purchaser liable for the purchase price, we at our option may either (a) cancel the sale, retaining as liquidated damages all payments made by the purchaser or (b) resell the property, either publicly or privately, and in such

event the purchaser shall be liable for the payment of any deficiency plus all costs and expenses of both sales, our commission at our standard rates, all other charges due hereunder, attorneys' fees, expenses and incidental damages. In addition, where two or more amounts are owed in respect of different transactions by the purchaser to us, to Bonhams 1793 Limited and/or to any of our other affiliates, subsidiaries or parent companies worldwide within the Bonhams Group, we reserve the right to apply any monies paid in respect of a transaction to discharge any amount owed by the purchaser. If all fees, commissions, premiums, bid price and other sums due to us from the purchaser are not paid promptly as provided in these Conditions of Sale, we reserve the right to impose a finance charge equal to 1.5% per month on all amounts due to us beginning on the 31st day following the sale until payment is received, in addition to other remedies available to us by law.

3. We reserve the right to withdraw any property and to divide and combine lots at any time before such property's auction. Unless otherwise announced by the auctioneer at the time of sale, all bids are per lot as numbered in the catalog and no lots shall be divided or combined for sale.

4. We reserve the right to reject a bid from any bidder, to split any bidding increment, and to advance the bidding in any manner the auctioneer may decide. In the event of any dispute between bidders, or in the event the auctioneer doubts the validity of any bid, the auctioneer shall have sole and final discretion either to determine the successful bidder or to re-offer and resell the article in dispute. If any dispute arises after the sale, our sales records shall be conclusive in all respects.

5. If we are prevented by fire, theft or any other reason whatsoever from delivering any property to the purchaser or a sale otherwise cannot be completed, our liability shall be limited to the sum actually paid therefor by the purchaser and shall in no event include any compensatory, incidental or consequential damages.

6. If a lot is offered subject to a reserve, we may implement such reserve by bidding on behalf of the consignor, whether by opening bidding or continuing bidding in response to other bidders until reaching the reserve. If we have an interest in an offered lot and the proceeds therefrom other than our commissions, we may bid therefor to protect such interest. **CONSIGNORS ARE NOT ALLOWED TO BID ON THEIR OWN ITEMS.**

7. All statements contained in the catalog or in any bill of sale, condition report, invoice or elsewhere as to authorship, period, culture, source, origin, measurement, quality, rarity, provenance, importance, exhibition and literature of historical relevance, or physical condition **ARE QUALIFIED STATEMENTS OF OPINION AND NOT REPRESENTATIONS OR WARRANTIES.** No employee or agent of Bonhams is authorized to make on our behalf or on that of the consignor any representation or warranty, oral or written, with respect to any property.

8. All purchased property shall be removed from the premises at which the sale is conducted by the date(s) and time(s) set forth in the "Buyer's Guide" portion of this catalog. Property designated with a "W" and associated purchased lots, if not removed promptly following sale, will be transferred to an offsite warehouse at the purchaser's risk and expense, as set forth in more detail in the "Buyer's Guide." Purchased property that is permitted to remain onsite at Bonhams' facility should be removed at the purchaser's expense not later than 5:00 p.m. Pacific Time five (5) business days following the date of the sale. If not so removed, a storage fee of \$5.00 per lot per day will be payable to us by the purchaser beginning at the close

of the 21st day following the sale, and we may thereafter transfer such property to an offsite warehouse at the purchaser's risk and expense. Accounts must be settled in full before property will be released. Packing and handling of purchased lots are the responsibility of the purchaser. Bonhams can provide packing and shipping services for certain items as noted in the "Buyer's Guide" section of the catalog.

9. The copyright in the text of the catalog and the photographs, digital images and illustrations of lots in the catalog belong to Bonhams or its licensors. You will not reproduce or permit anyone else to reproduce such text, photographs, digital images or illustrations without our prior written consent.

10. These Conditions of Sale shall bind the successors and assigns of all bidders and purchasers and inure to the benefit of our successors and assigns. No waiver, amendment or modification of the terms hereof (other than posted notices or oral announcements during the sale) shall bind us unless specifically stated in writing and signed by us. If any part of these Conditions of Sale is for any reason invalid or unenforceable, the rest shall remain valid and enforceable.

11. These Conditions of Sale and the purchaser's and our respective rights and obligations hereunder are governed by the laws of the State of California. By bidding at an auction, each purchaser and bidder agrees to be bound by these Conditions of Sale. Any dispute, controversy or claim arising out of or relating to this agreement, or the breach, termination or validity thereof, brought by or against Bonhams (but not including claims brought against the consignor by the purchaser of lots consigned hereunder) shall be resolved by the procedures set forth below.

### MEDIATION AND ARBITRATION PROCEDURES

(a) Within 30 days of written notice that there is a dispute, the parties or their authorized and empowered representatives shall meet by telephone and/or in person to mediate their differences. If the parties agree, a mutually acceptable mediator shall be selected and the parties will equally share such mediator's fees. The mediator shall be a retired judge or an attorney familiar with commercial law and trained in or qualified by experience in handling mediations. Any communications made during the mediation process shall not be admissible in any subsequent arbitration, mediation or judicial proceeding. All proceedings and any resolutions thereof shall be confidential, and the terms governing arbitration set forth in paragraph (c) below shall govern.

(b) If mediation does not resolve all disputes between the parties, or in any event no longer than 60 days after receipt of the written notice of dispute referred to above, the parties shall submit the dispute for binding arbitration before a single neutral arbitrator. Such arbitrator shall be a retired judge or an attorney familiar with commercial law and trained in or qualified by experience in handling arbitrations. Such arbitrator shall make all appropriate disclosures required by law. The arbitrator shall be drawn from a panel of a national arbitration service agreed to by the parties, and shall be selected as follows: (i) If the national arbitration service has specific rules or procedures, those rules or procedures shall be followed; (ii) If the national arbitration service does not have rules or procedures for the selection of an arbitrator, the arbitrator shall be an individual jointly agreed to by the parties. If the parties cannot agree on a national arbitration service, the arbitration shall be conducted by the American Arbitration Association, and the arbitrator shall be selected in accordance with the Rules of the

## CONDITIONS OF SALE - CONTINUED

American Arbitration Association. The arbitrator's award shall be in writing and shall set forth findings of fact and legal conclusions.

(c) Unless otherwise agreed to by the parties or provided by the published rules of the national arbitration service:

(i) the arbitration shall occur within 60 days following the selection of the arbitrator;

(ii) the arbitration shall be conducted in the designated location, as follows: (A) in any case in which the subject auction by Bonhams took place or was scheduled to take place in the State of New York or Connecticut or the Commonwealth of Massachusetts, the arbitration shall take place in New York City, New York; (B) in all other cases, the arbitration shall take place in the city of San Francisco, California; and

(iii) discovery and the procedure for the arbitration shall be as follows:

(A) All arbitration proceedings shall be confidential;

(B) The parties shall submit written briefs to the arbitrator no later than 15 days before the arbitration commences;

(C) Discovery, if any, shall be limited as follows: (I) Requests for no more than 10 categories of documents, to be provided to the requesting party within 14 days of written request therefor; (II) No more than two (2) depositions per party, provided however, the deposition(s) are to be completed within one (1) day; (III) Compliance with the above shall be enforced by the arbitrator in accordance with California law;

(D) Each party shall have no longer than eight (8) hours to present its position. The entire hearing before the arbitrator shall not take longer than three (3) consecutive days;

(E) The award shall be made in writing no more than 30 days following the end of the proceeding. Judgment upon the award rendered by the arbitrator may be entered by any court having jurisdiction thereof.

To the fullest extent permitted by law, and except as required by applicable arbitration rules, each party shall bear its own attorneys' fees and costs in connection with the proceedings and shall share equally the fees and expenses of the arbitrator.

### LIMITED RIGHT OF RESCISSION

If within one (1) year from the date of sale, the original purchaser (a) gives written notice to us alleging that the identification of Authorship (as defined below) of such lot as set forth in the **BOLD TYPE** heading of the catalog description of such lot (as amended by any salerom notices or verbal announcements during the sale) is not substantially correct based on a fair reading of the catalog (including the terms of any glossary contained therein), and (b) within 10 days after such notice returns the lot to us in the same condition as at the time of sale, and (c) establishes the allegation in the notice to our satisfaction (including by providing one or more written opinions by recognized experts in the field, as we may reasonably require), then the sale of such lot will be rescinded and, unless we have already paid to the consignor monies owed him in connection with the sale, the original purchase price will be refunded.

If, prior to receiving such notice from the original purchaser alleging such defect, we have paid the consignor monies owed him in connection with the sale, we shall pay the original purchaser the amount of our commissions, any other sale proceeds to which we are entitled and applicable taxes received from the purchaser on the sale and make demand on the consignor to pay the balance of the original purchase price to the original purchaser. Should the consignor fail to pay such amount promptly, we may disclose the identity of the consignor and assign to the original purchaser our rights against the consignor with respect to the lot the sale of which is sought to be rescinded. Upon such disclosure and assignment, any liability of Bonhams as consignor's agent with respect to said lot shall automatically terminate.

The foregoing limited right of rescission is available to the original purchaser only and may not be assigned to or relied upon by any subsequent transferee of the property sold. The purchaser hereby accepts the benefit of the consignor's warranty of title and other representations and warranties made by the consignor for the purchaser's benefit. Nothing in this section shall be construed as an admission by us of any representation of fact, express or implied, obligation or responsibility with respect to any lot. **THE PURCHASER'S SOLE AND EXCLUSIVE**

REMEDY AGAINST BONHAMS FOR ANY REASON WHATSOEVER IS THE LIMITED RIGHT OF RESCISSION DESCRIBED IN THIS SECTION.

"Authorship" means only the identity of the creator, the period, culture and source or origin of the lot, as the case may be, as set forth in the **BOLD TYPE** heading of the print catalog entry. The right of rescission does not extend to: (a) works of art executed before 1870 (unless these works are determined to be counterfeits created since 1870), as this is a matter of current scholarly opinion which can change; (b) titles, descriptions, or other identification of offered lots, which information normally appears in lower case type below the **BOLD TYPE** heading identifying the Authorship; (c) Authorship of any lot where it was specifically mentioned that there exists a conflict of specialist or scholarly opinion regarding the Authorship of the lot at the time of sale; (d) Authorship of any lot which as of the date of sale was in accordance with the then generally-accepted opinion of scholars and specialists regarding the same; or (e) the identification of periods or dates of creation in catalog descriptions which may be proven inaccurate by means of scientific processes that are not generally accepted for use until after publication of the catalog in which the property is offered or that were unreasonably expensive or impractical to use at the time of such publication.

### LIMITATION OF LIABILITY

EXCEPT AS EXPRESSLY PROVIDED ABOVE, ALL PROPERTY IS SOLD "AS IS." NEITHER BONHAMS NOR THE CONSIGNOR MAKES ANY REPRESENTATION OR WARRANTY, EXPRESS OR IMPLIED, AS TO THE MERCHANTABILITY, FITNESS OR CONDITION OF THE PROPERTY OR AS TO THE CORRECTNESS OF DESCRIPTION, GENUINENESS, ATTRIBUTION, PROVENANCE OR PERIOD OF THE PROPERTY OR AS TO WHETHER THE PURCHASER ACQUIRES ANY COPYRIGHTS OR OTHER INTELLECTUAL PROPERTY RIGHTS IN LOTS SOLD OR AS TO WHETHER A WORK OF ART IS SUBJECT TO THE ARTIST'S MORAL RIGHTS OR OTHER RESIDUAL RIGHTS OF THE ARTIST. THE PURCHASER EXPRESSLY ACKNOWLEDGES AND AGREES THAT IN NO EVENT SHALL BONHAMS BE LIABLE FOR ANY DAMAGES INCLUDING, WITHOUT LIMITATION, ANY COMPENSATORY, INCIDENTAL OR CONSEQUENTIAL DAMAGES.

## SELLER'S GUIDE

### SELLING AT AUCTION

Bonhams can help you every step of the way when you are ready to sell art, antiques and collectible items at auction. Our regional offices and representatives throughout the US are available to service all of your needs. Should you have any further questions, please visit our website at [www.bonhams.com/us](http://www.bonhams.com/us) for more information or call our Client Services Department at +1 (800) 223 2854 ext. 23550.

### AUCTION ESTIMATES

The first step in the auction process is to determine the auction value of your property. Bonhams' world-renowned specialists will evaluate your special items at no charge and in complete confidence. You can obtain an auction estimate in many ways:

- Attend one of our Auction Appraisal Events held regularly at our galleries and in other major metropolitan areas. The updated schedule for Bonhams Auction Appraisal Events is available at [www.bonhams.com/us](http://www.bonhams.com/us).
- Call our Client Services Department to schedule a private appointment at one of our galleries. If you have a large collection, our specialists can travel, by appointment, to evaluate your property on site.
- Send clear photographs to us of each individual item, including item dimensions and other pertinent information with each picture. Photos should be sent to Bonhams' address in envelopes marked

as "photo auction estimate". Alternatively, you can submit your request using our online form at [www.bonhams.com/us](http://www.bonhams.com/us). Digital images may be attached to the form. Please limit your images to no more than five (5) per item.

### CONSIGNING YOUR PROPERTY

After you receive an estimate, you may consign your property to us for sale in the next appropriate auction. Our staff assists you throughout the process, arranging transportation of your items to our galleries (at the consignor's expense), providing a detailed inventory of your consignment, and reporting the prices realized for each lot. We provide secure storage for your property in our warehouses and all items are insured throughout the auction process. You will receive payment for your property approximately 35 days after completion of sale.

Sales commissions vary with the potential auction value of the property and the particular auction in which the property is offered. Please call us for commission rates.

### PROFESSIONAL APPRAISAL SERVICES

Bonhams' specialists conduct insurance and fair market value appraisals for private collectors, corporations, museums, fiduciaries and government entities on a daily basis. Insurance appraisals, used for insurance purposes, reflect the cost of replacing property in today's retail market. Fair market value appraisals are used for estate,

tax and family division purposes and reflect prices paid by a willing buyer to a willing seller.

When we conduct a private appraisal, our specialists will prepare a thorough inventory listing of all your appraised property by category. Valuations, complete descriptions and locations of items are included in the documentation.

Appraisal fees vary according to the nature of the collection, the amount of work involved, the travel distance, and whether the property is subsequently consigned for auction.

Our appraisers are available to help you anywhere and at any time. Please call our Client Services Department to schedule an appraisal.

### ESTATE SERVICES

Since 1865, Bonhams has been serving the needs of fiduciaries – lawyers, trust officers, accountants and executors – in the disposition of large and small estates. Our services are specially designed to aid in the efficient appraisal and disposition of fine art, antiques, jewelry, and collectibles. We offer a full range of estate services, ranging from flexible financial terms to tailored accounting for heirs and their agents to world-class marketing and sales support.

For more information or to obtain a detailed Trust and Estates package, please visit our website at [www.bonhams.com/us](http://www.bonhams.com/us) or contact our Client Services Department.

# BUYER'S GUIDE

## BIDDING & BUYING AT AUCTION

Whether you are an experienced bidder or an enthusiastic novice, auctions provide a stimulating atmosphere unlike any other. Bonhams previews and sales are free and open to the public. As you will find in these directions, bidding and buying at auction is easy and exciting. Should you have any further questions, please visit our website at [www.bonhams.com](http://www.bonhams.com) or call our Client Services Department at +1 (800) 223 2854 ext. 23550.

### Catalogs

Before each auction we publish illustrated catalogs that include dates and times for previews and auctions. Our catalogs also provide descriptions and estimated values for each "lot." A lot may refer to a single item or to a group of items auctioned together. We offer our catalogs by subscription or by single copy. For information on subscribing to our catalogs, you may refer to the subscription form in this catalog, call our Client Services Department, or visit our website at [www.bonhams.com/us](http://www.bonhams.com/us).

### Previews

Auction previews are your chance to inspect each lot prior to the auction. We encourage you to look closely and examine each object on which you may want to bid so that you will know as much as possible about it. Items are sold "as is" and with all faults; illustrations in our catalogs, website and other materials are provided for identification only. At the previews, our staff is always available to answer your questions and guide you through the auction process. Condition reports may be available upon request.

### Estimates

Bonhams catalogs include estimates for each lot, exclusive of buyer's premium and tax. The estimates are provided as an approximate guide to current market value and should not be interpreted as a representation or prediction of actual selling prices. They are determined well in advance of a sale and are subject to revision. Please contact us should you have any questions about value estimates.

### Reserves

All lots in a catalog are subject to a reserve unless otherwise indicated. The reserve is the minimum price that the seller is willing to accept for a lot. This amount is confidential and does not exceed the low estimated value.

## BIDDING AT AUCTION

At Bonhams, you can bid in many ways: in person, via absentee bid, over the phone, or via Bonhams' online bidding facility. Absentee bids can be submitted in person, online, via fax or via email.

A valid Bonhams client account is required to participate in bidding activity. You can obtain registration information online, at the reception desk or by calling our Client Services Department.

By bidding at auction, whether in person or by agent, by absentee bid, telephone, online or other means, the buyer or bidder agrees to be bound by the Conditions of Sale.

Lots are auctioned in consecutive numerical order as they appear in the catalog. Bidding normally begins below the low estimate. The auctioneer will accept bids from interested parties present in the saleroom, from telephone bidders, and from absentee bidders who have left written bids in advance of the sale. The auctioneer may also execute bids on behalf of the consignor up to the amount of the reserve, but never above it.

We assume no responsibility for failure to execute bids for any reason whatsoever.

### In Person

If you are planning to bid at auction, you will need to register at the reception desk in order to receive a numbered bid card. To place a bid, hold up your card so that the auctioneer can clearly see it. Decide on the maximum amount that you wish to pay, exclusive of buyer's premium and tax, and continue bidding until your bid prevails or you reach your limit. If you are the successful bidder on a lot, the auctioneer will acknowledge your paddle number and bid amount.

### Absentee Bids

As a service to those wishing to place bids, we may at our discretion accept bids without charge in advance of sale by telephone, by facsimile or in writing on bidding forms available from us. "Buy" bids will not be accepted; all bids must state the highest bid price the bidder is willing to pay. Our auction staff

will try to bid just as you would, with the goal of obtaining the item at the lowest bid price possible. In the event identical bids are submitted, the earliest bid submitted will take precedence. Absentee bids shall be executed in competition with other absentee bids, any applicable reserve, and bids from other auction participants. A friend or agent may place bids on your behalf, provided that we have received your written authorization prior to the sale. Absentee bid forms are available in our catalogs, online at [www.bonhams.com/us](http://www.bonhams.com/us), and at our San Francisco, Los Angeles and New York galleries.

### By Telephone

Under special circumstances, we can arrange for you to bid by telephone. To arrange for a telephone bid, please contact our Client Services Department a minimum of 24 hours prior to the sale.

### Online

Web users may place absentee bids online from anywhere in the world. To bid online, please visit our website at [www.bonhams.com/us](http://www.bonhams.com/us).

We are pleased to make our live online bidding facility available to bidders in this sale.

Additional terms and conditions of sale relating to online bidding will apply. Please see [www.bonhams.com/24180](http://www.bonhams.com/24180) or contact the Client Services Department to obtain information and learn how you can register and bid online in this sale.

### Bid Increments

Bonhams generally uses the following increment multiples as bidding progresses:

\$50-200 .....	by \$10s
\$200-500 .....	by \$20/50/80s
\$500-1,000 .....	by \$50s
\$1,000-2,000 .....	by \$100s
\$2,000-5,000 .....	by \$200/500/800s
\$5,000-10,000 .....	by \$500s
\$10,000-20,000 .....	by \$1,000s
\$20,000-50,000 .....	by \$2,000/5,000/8,000s
\$50,000-100,000 .....	by \$5,000s
\$100,000-200,000 .....	by \$10,000s
above \$200,000 .....	at auctioneer's discretion

**The auctioneer may split or reject any bid at any time at his or her discretion as outlined in the Conditions of Sale.**

### Currency Converter

Solely for the convenience of bidders, a currency converter may be provided at Bonhams sales. The rates quoted for conversion of other currencies to U.S. Dollars are indications only and should not be relied upon by a bidder, and neither Bonhams nor its agents shall be responsible for any errors or omissions in the operation or accuracy of the currency converter.

### Buyer's Premium

A buyer's premium is added to the winning bid price of each individual lot purchased, at the rates set forth in the Conditions of Sale. The winning bid price plus the premium constitute the purchase price for the lot. Applicable sales taxes are computed based on this figure, and the total becomes your final purchase price.

Unless specifically illustrated and noted, fine art frames are not included in the estimate or purchase price. Bonhams accepts no liability for damage or loss to frames during storage or shipment.

All sales are final and subject to the Conditions of Sale found in our catalogs, on our website, and available at the reception desk.

### Payment

All buyers are asked to pay and pick up by 3pm on the business day following the auction. Payment may be made to Bonhams by cash, checks drawn on a U.S. bank, money order, wire transfer, or by Visa, MasterCard, American Express or Discover credit or charge card or debit card. All items must be paid for within 5 business days of the sale. Please note that payment by personal or business check may result in property not being released until purchase funds clear our bank.

### Sales Tax

Residents of states listed in Paragraph 1 of the Conditions of Sale must pay applicable sales tax. Other state or local taxes (or compensation use taxes) may apply. Sales tax will be automatically added to the invoice unless a valid resale number has been furnished or the property is shipped via

common carrier to destinations outside the states listed in the Conditions of Sale. If you wish to use your resale license please contact Cashiers for our form.

### Shipping & Removal

Buyers are to review the Offsite Sold Property Storage page for a list of lots that will be removed to the offsite warehouse of Box Brothers. These designated lots must be retrieved by the buyer prior to the day and time designated on the Offsite Sold Property Storage page. If buyers of these designated lots also buy other lots, such as decorations, rugs or works of art, these lots may also be removed to the warehouse of Box Brothers, so all lots remain together and customers can collect or ship from one location. All other items will remain at Bonhams for a period of 21 days, after which time they may be transferred to offsite storage. Wine, Jewelry, Natural History, Collectibles, 20th Century Decorative Arts, Rugs, Native American Art, Tribal Art and most Arms & Armor auctions are not included in this policy.

Box Brothers San Leandro (for San Francisco auctions only)  
1471 Doolittle Drive, San Leandro, CA 94577  
Tel (800) 942 6822; Fax (510) 628 8454

Box Brothers Los Angeles (for Los Angeles auctions only)  
220 W. Ivy Ave, Unit C, Inglewood, Ca 90302  
+1 (310) 419 9915 or +1 (800) 474 7447

Box Brothers is open Monday-Friday 8am-5pm with Saturday and Sunday hours available. Buyers must contact Box Brothers 24 hours in advance of pickup. Appointments are required.

Bonhams can accommodate shipping for certain items. Please contact our Cashiers Department for more information or to obtain a quote. Refer to Conditions of Sale for special terms governing the shipment of Arms and Wine. Shipments are made during weekday business hours up to four weeks after payment is received. Carriers are not permitted to deliver to P.O. Boxes.

International buyers are responsible for all import/export customs duties and taxes. An invoice stating the actual purchase price(s) will accompany all international purchases.

### Simultaneous sale property collection notice:

If this sale previews in multiple cities, please see the title page for details regarding final location of property for collection.

### Handling and Storage Charges

Please note: For sold lots removed to Box Brothers, there will be no post-sale storage charge for lots collected within 5 days from the sale date. For lots that remain at Bonhams, there will be no post-sale storage charge for lots collected within 21 days of the sale date. Handling fees may apply.

Lots uncollected at Bonhams after 21 days may be removed to the warehouse of Box Brothers. Handling and storage fees will apply.

Insurance: All sold lots are insured by Box Brothers at the sum of the hammer price plus buyer's premium.

**Please refer to Box Brothers for a list of Handling, Storage and Insurance fees.**

### Payment

**Payments for purchased lots must be made directly to Bonhams.** Box Brothers will not release property to a buyer unless the buyer has paid Bonhams first. All charges for handling and storage due to Box Brothers must be paid by the time of collection from their warehouse. Please telephone Box Brothers at +1 (800) 474 7447 in advance to ascertain the amount due. **Lots will only be released from Box Brothers' warehouse with a "Release Order" obtained from the cashier's office at Bonhams.**

The removal/storage and/or shipment by Box Brothers of any lots will be subject to their standard Conditions of Business, copies of which are available at Bonhams or from Box Brothers directly.

### Auction Results

To find out the final purchase price for any lot following the sale, please call our automated auction results line at +1 (800) 223 2854 ext. 3400. Auction results are usually available on the next business day following the sale or online at [www.bonhams.com/us](http://www.bonhams.com/us).

# Catalog Order Form

# Bonhams

Please check the Auction Catalog(s) you would like to receive, complete the address and payment information below and send the completed form via email to [catalogs.us@bonhams.com](mailto:catalogs.us@bonhams.com), or via fax at (415) 861 8951, or mail to:

## Bonhams

220 San Bruno Avenue  
San Francisco, California 94103

If you have any questions please contact us at +1 (800) 223 2854

Category Name	Internal	Domestic Address*	International Address*	Issues per year**
19th CENTURY PAINTINGS (Including Russian and Dogs in Art)	PIC41	<input type="checkbox"/> \$200	<input type="checkbox"/> \$280	5
20TH CENTURY FURNITURE & DECORATIVE ARTS	FRN21	<input type="checkbox"/> \$160	<input type="checkbox"/> \$200	4
AFRICAN, OCEANIC & PRE-COLUMBIAN ART	TRI12	<input type="checkbox"/> \$120	<input type="checkbox"/> \$150	3
AMERICAN & CALIFORNIA WESTERN PAINTINGS & SCULPTURE	PIC40	<input type="checkbox"/> \$200	<input type="checkbox"/> \$250	5
ARMS, ARMOR AND MODERN SPORTING GUNS	ARM10	<input type="checkbox"/> \$80	<input type="checkbox"/> \$100	2
ASIAN WORKS OF ART	ASN10	<input type="checkbox"/> \$360	<input type="checkbox"/> \$430	9
BONHAMS QUARTERLY MAGAZINE	MAGB	<input type="checkbox"/> \$30		4
BOOKS, MANUSCRIPTS & RELATED CATEGORIES	BKS10	<input type="checkbox"/> \$320	<input type="checkbox"/> \$400	8
COINS AND BANKNOTES	CNS10	<input type="checkbox"/> \$160	<input type="checkbox"/> \$200	4
CONTEMPORARY ART (Including Made in California)	PIC50 & PIC52	<input type="checkbox"/> \$200	<input type="checkbox"/> \$250	5
ENTERTAINMENT MEMORABILIA & COLLECTABLES	COL10	<input type="checkbox"/> \$160	<input type="checkbox"/> \$200	4
EUROPEAN & AMERICAN FURNITURE & DECORATIVE ARTS	FRN20	<input type="checkbox"/> \$320	<input type="checkbox"/> \$400	7
IMPRESSIONIST AND MODERN ART	PIC55	<input type="checkbox"/> \$100	<input type="checkbox"/> \$120	2
INDIAN, HIMALAYAN & SOUTHEAST ASIAN ART	ASN12	<input type="checkbox"/> \$80	<input type="checkbox"/> \$100	2
JAPANESE WORKS OF ART	ASN11	<input type="checkbox"/> \$120	<input type="checkbox"/> \$140	3
JEWELRY	JWL10	<input type="checkbox"/> \$320	<input type="checkbox"/> \$400	8
MADE IN CALIFORNIA CONTEMPORARY ART	PIC52	<input type="checkbox"/> \$80	<input type="checkbox"/> \$100	2
MARITIME PAINTINGS AND DECORATIVE ARTS	COL11	<input type="checkbox"/> \$80	<input type="checkbox"/> \$100	2
MOTOR CARS, MOTORCYCLES & AUTOMOBILIA	MOT10 & MOT20	<input type="checkbox"/> \$330	<input type="checkbox"/> \$390	6
MOTORCYCLES	MOT20	<input type="checkbox"/> \$40	<input type="checkbox"/> \$50	1
NATIVE AMERICAN ART	NTV10	<input type="checkbox"/> \$120	<input type="checkbox"/> \$150	3
NATURAL HISTORY, GEMS, MINERALS & LAPIDARY	NAT10	<input type="checkbox"/> \$120	<input type="checkbox"/> \$150	3
PHOTOGRAPHS	PIC44	<input type="checkbox"/> \$120	<input type="checkbox"/> \$150	3
PRINTS	PIC43	<input type="checkbox"/> \$120	<input type="checkbox"/> \$150	3
SPACE MEMORABILIA	BKS11	<input type="checkbox"/> \$40	<input type="checkbox"/> \$50	1
WATCHES	JWL11	<input type="checkbox"/> \$120	<input type="checkbox"/> \$150	3
WINES	WIN10	<input type="checkbox"/> \$280	<input type="checkbox"/> \$350	5
WRITING INSTRUMENTS	COL20	<input type="checkbox"/> \$50	<input type="checkbox"/> \$70	2
ALL CATEGORIES	ALLCAT	<input type="checkbox"/> \$4,500	<input type="checkbox"/> \$5,600	109

\*\* The number of auction catalogs and sales listed for a subscription are strictly estimates. We are not responsible for refunds or credits if the number of sales alters from the estimate. Some of the above categories may include our auctions in other locations.

### Method of Payment

Check/Money Order enclosed for \$ \_\_\_\_\_  
Payable to Bonhams and Butterfields

Visa    Mastercard    American Express

Card number \_\_\_\_\_

Expiration Date \_\_\_\_ / \_\_\_\_    CWV \_\_\_\_

Cardholder Name \_\_\_\_\_

Address \_\_\_\_\_

City \_\_\_\_\_ State \_\_\_\_ Zip \_\_\_\_\_ Country \_\_\_\_\_

Signature \_\_\_\_\_ Date \_\_\_\_\_

### Send Catalogs to:

Name \_\_\_\_\_

Address \_\_\_\_\_

City \_\_\_\_\_ State \_\_\_\_ Zip \_\_\_\_\_ Country \_\_\_\_\_

Telephone \_\_\_\_\_ Date \_\_\_\_\_

Email \_\_\_\_\_

Client Number (internal use only) \_\_\_\_\_

# CONTACTS

## OFFICERS

Malcolm Barber  
Co-Chairman

Matthew Girling  
Chief Executive Officer

Laura King Pfaff •  
Chairman Emeritus

Leslie Wright  
Vice President, Trusts and Estates

Jon King  
Vice President, Business Development

Vice Presidents, Specialists  
Susan F. Abeles  
Rupert Banner  
Kayla Carlsen  
Judith Eurich  
Mark Fisher  
Dessa Goddard  
Jakob Greisen  
Bruce McLaren  
Scot Levitt  
Mark Osborne  
Brooke Sivo  
Catherine Williamson

## REPRESENTATIVES

**Arizona**  
Terri Adrian-Hardy, (602) 684 5747

**California**  
David Daniel  
(916) 364 1645, Central Valley

**California**  
Brooke Sivo  
(760) 350 4255, Palm Springs  
(323) 436 5420, San Diego

**Colorado**  
Julie Segraves, (720) 355 3737 •

**Florida**  
Jon King  
(561) 651 7876, Palm Beach  
(305) 228 6600, Miami  
(954) 566 1630, Ft. Lauderdale

**Georgia**  
Mary Moore Bethea, (404) 842 1500 •

**Illinois**  
Ricki Harris  
(773) 267 3300, (773) 680 2881

**Massachusetts/New England**  
Amy Corcoran, (617) 742 0909

**Nevada**  
David Daniel, (775) 831 0330

**New Jersey**  
Alan Fausel, (973) 997 9954 •

**New Mexico**  
Michael Bartlett, (505) 820 0701

**Oregon and Idaho**  
Sheryl Acheson, (503) 312 6023

**Pennsylvania**  
Alan Fausel, (610) 644 1199 •

**Texas, Oklahoma and Louisiana**  
Amy Lawch, (713) 621 5988 •

**Virginia and Washington DC**  
Gertraud Hechl, (540) 454 2437 •

**Washington**  
Heather O'Mahony, (206) 218 5011

**Canada, Toronto, Ontario**  
Jack Kerr-Wilson, (416) 462 9004 •

**Montreal, Quebec**  
David Kelsey, (514) 894 1138 •

**BONHAMS \*  
NEW YORK DEPARTMENTS  
580 Madison Avenue  
New York, New York 10022  
(212) 644 9001**

**Books & Manuscripts**  
Darren Sutherland, (212) 461 6531

**Chinese Works of Art & Paintings**  
Bruce MacLaren, (917) 206 1677  
Nicolas Rice, (917) 206 1622

**Collectors' Motorcars & Motorcycles**  
Rupert Banner, (212) 461 6515  
Eric Minoff, (917) 206 1630  
Evan Ide, (917) 340 4657  
Michael Caimano, (917) 206 1615

**Fine Art  
American**  
Kayla Carlsen, (917) 206 1699

**Contemporary**  
Jeremy Goldsmith, (917) 206 1656  
Megan Murphy, (212) 644 9020

**European Paintings**  
Madalina Lazen, (212) 644 9108

**Impressionist & Modern**  
William O'Reilly, (212) 644 9135

**Himalayan Art**  
Mark Rasmussen, (917) 206 1688

**Japanese Works of Art**  
Jeff Olson, (212) 461 6516

**Jewelry**  
Susan F. Abeles, (212) 461 6525  
Caroline Morrissey, (212) 644 9046  
Camille Barbier, (212) 644 9035

**Maritime Paintings & Works of Art**  
Gregg Dietrich, (212) 644 9001 •

**Modern Decorative Arts & Design**  
Benjamin Walker, (212) 710 1306

**Photographs & Prints**  
Shawna Brickley, (917) 206 1690  
Laura Patterson, (917) 206 1653

**Russian Fine & Decorative Arts**  
Yelena Harbick, (212) 644 9136

**Trusts & Estates**  
Sherri Cohen, (917) 206 1671

**Watches & Clocks**  
Jonathan Snellenburg, (212) 461 6530  
Jonathan Hochman, (917) 206 1618

## CLIENT SERVICES DEPARTMENT

**San Francisco**  
(415) 861 7500  
(415) 861 8951 fax  
Monday - Friday, 9am to 5pm

**Los Angeles**  
(323) 850 7500  
(323) 850 6090 fax  
Monday - Friday, 9am to 5pm

**BONHAMS \*  
SAN FRANCISCO DEPARTMENTS  
220 San Bruno Avenue  
San Francisco California 94103  
(415) 861 7500**

**20th Century Fine Art**  
Dane Jensen, (323) 436 5451

**Arms & Armor**  
Paul Carella, (415) 503 3360

**Asian Works of Art**  
Dessa Goddard, (415) 503 3333

**Books & Manuscripts**  
Adam Stackhouse, (415) 503 3266

**Chinese Works of Art**  
Daniel Herske, (415) 503 3271

**Jewelry & Watches**  
Shannon Beck, (415) 503 3306

**Collectors' Motorcars & Motorcycles**  
Mark Osborne, (415) 503 3353  
Jakob Greisen, (415) 503 3284

**Museum Services**  
Laura King Pfaff, (415) 503 3210

**Native American Art**  
Ingmars Lindbergs, (415) 503 3393

**California & Western  
Paintings & Sculpture**  
Aaron Bastian, (415) 503 3241

**Photographs & Prints**  
Judith Eurich, (415) 503 3259

**Space History**  
Adam Stackhouse, (415) 503 3266

**Trusts & Estates**  
Victoria Richardson, (415) 503 3207  
Celeste Smith, (415) 503 3214

**Wine**  
Erin McGrath, (415) 503 3319

**Writing Instruments**  
Ivan Briggs, (415) 503 3255

**BONHAMS \*  
LOS ANGELES DEPARTMENTS  
7601 W. Sunset Boulevard  
Los Angeles California 90046  
(323) 850 7500**

**20th Century Decorative Arts**  
Angela Past, (323) 436 5422

**20th Century Fine Art**  
Alexis Chompaisal, (323) 436 5469

**African, Oceanic & Pre-Columbian Art**  
Fredric W. Backlar, (323) 436 5416 •

**Books & Manuscripts**  
Catherine Williamson, (323) 436 5442

**Coins & Banknotes**  
Paul Song, (323) 436 5455

**Contemporary Art**  
Dane Jensen, (323) 436 5451

**Entertainment Memorabilia**  
Catherine Williamson, (323) 436 5442  
Dana Hawkes, (978) 283 1518

**Furniture & Decorative Arts**  
Andrew Jones, (323) 436 5432  
Jennifer Kurtz, (323) 436 5478

**Jewelry & Watches**  
Dana Ehrman, (323) 436 5407  
Claire De Biasio-Paris, (323) 436 5483

**Collectors' Motorcars & Motorcycles**  
Nick Smith, (323) 436 5470

**Photographs & Prints**  
Morisa Rosenberg, (323) 436 5435

**Natural History**  
Thomas E. Lindgren, (310) 469 8567 •  
Claudia Florian, G.J.G., (323) 436 5437 •

**California & Western  
Paintings & Sculpture**  
Scot Levitt, (323) 436 5425

**Paintings - European**  
Mark Fisher, (323) 436 5488

**Silver**  
Aileen Ward, (323) 436 5463

**Trusts & Estates**  
Leslie Wright, (323) 436 5408  
Joseph Francaviglia, (323) 436 5443

\* Indicates saleroom  
• Indicates independent contractor

The following information is recorded  
and available 24 hours a day, 7 days a  
week, through our telephone system:

- Auction and Preview Information  
- Directions to Bonhams's salesrooms  
- Automated Auction Results

# Auction Registration Form

(Attendee / Absentee / Online / Telephone Bidding)

Please circle your bidding method above.

--	--	--	--

**Paddle number (for office use only)**

**General Notice:** This sale will be conducted in accordance with Bonhams Conditions of Sale, and your bidding and buying at the sale will be governed by such terms and conditions. Please read the Conditions of Sale in conjunction with the Buyer's Guide relating to this sale and other published notices and terms relating to bidding. Payment by personal or business check may result in your property not being released until purchase funds clear our bank. Checks must be drawn on a U.S. bank.

**Notice to Absentee Bidders:** In the table below, please provide details of the lots on which you wish to place bids at least 24 hours prior to the sale. Bids will be rounded down to the nearest increment. Please refer to the Buyer's Guide in the catalog for further information relating to instructions to Bonhams to execute absentee bids on your behalf. Bonhams will endeavor to execute bids on your behalf but will not be liable for any errors or non-executed bids.

**Notice to First Time Bidders:** New clients are requested to provide photographic proof of ID - passport, driving license, ID card, together with proof of address - utility bill, bank or credit card statement etc. Corporate clients should also provide a copy of their articles of association / company registration documents, together with a letter authorizing the individual to bid on the company's behalf. Failure to provide this may result in your bids not being processed. For higher value lots you may also be asked to provide a bankers reference.

**Notice to online bidders;** If you have forgotten your username and password for [www.bonhams.com](http://www.bonhams.com), please contact Client Services.

**If successful**

- I will collect the purchases myself
- Please contact me with a shipping quote (if applicable)
- I will arrange a third party to collect my purchase(s)

**Please email or fax the completed Registration Form and requested information to:**

Bonhams Client Services Department  
7601 Sunset Blvd  
Los Angeles, California 90046  
Tel +1 (800) 223 2854  
Fax +1 (323) 850 6090  
[bids.us@bonham.com](mailto:bids.us@bonham.com)

# Bonhams

Sale title: California Jewels		Sale date: Tuesday September 12, 2017	
Sale no. 24180		Sale venue: Los Angeles	
<b>General Bid Increments:</b>			
\$10 - 200 .....by 10s		\$10,000 - 20,000 .....by 1,000s	
\$200 - 500 .....by 20 / 50 / 80s		\$20,000 - 50,000 .....by 2,000 / 5,000 / 8,000s	
\$500 - 1,000 .....by 50s		\$50,000 - 100,000 .....by 5,000s	
\$1,000 - 2,000 .....by 100s		\$100,000 - 200,000 .....by 10,000s	
\$2,000 - 5,000 .....by 200 / 500 / 800s		above \$200,000 .....at the auctioneer's discretion	
\$5,000 - 10,000 .....by 500s		The auctioneer has discretion to split any bid at any time.	
Customer Number		Title	
First Name		Last Name	
Company name (to be invoiced if applicable)			
Address			
City		County / State	
Post / Zip code		Country	
Telephone mobile		Telephone daytime	
Telephone evening		Fax	
Telephone bidders: indicate primary and secondary contact numbers by writing ① or ② next to the telephone number.			
E-mail (in capitals) _____			
By providing your email address above, you authorize Bonhams to send you marketing materials and news concerning Bonhams and partner organizations. Bonhams does not sell or trade email addresses.			
I am registering to bid as a private client <input type="checkbox"/>		I am registering to bid as a trade client <input type="checkbox"/>	
Resale: please enter your resale license number here _____ We may contact you for additional information.			

SHIPPING	
Shipping Address (if different than above):	
Address: _____	Country: _____
City: _____	Post/ZIP code: _____

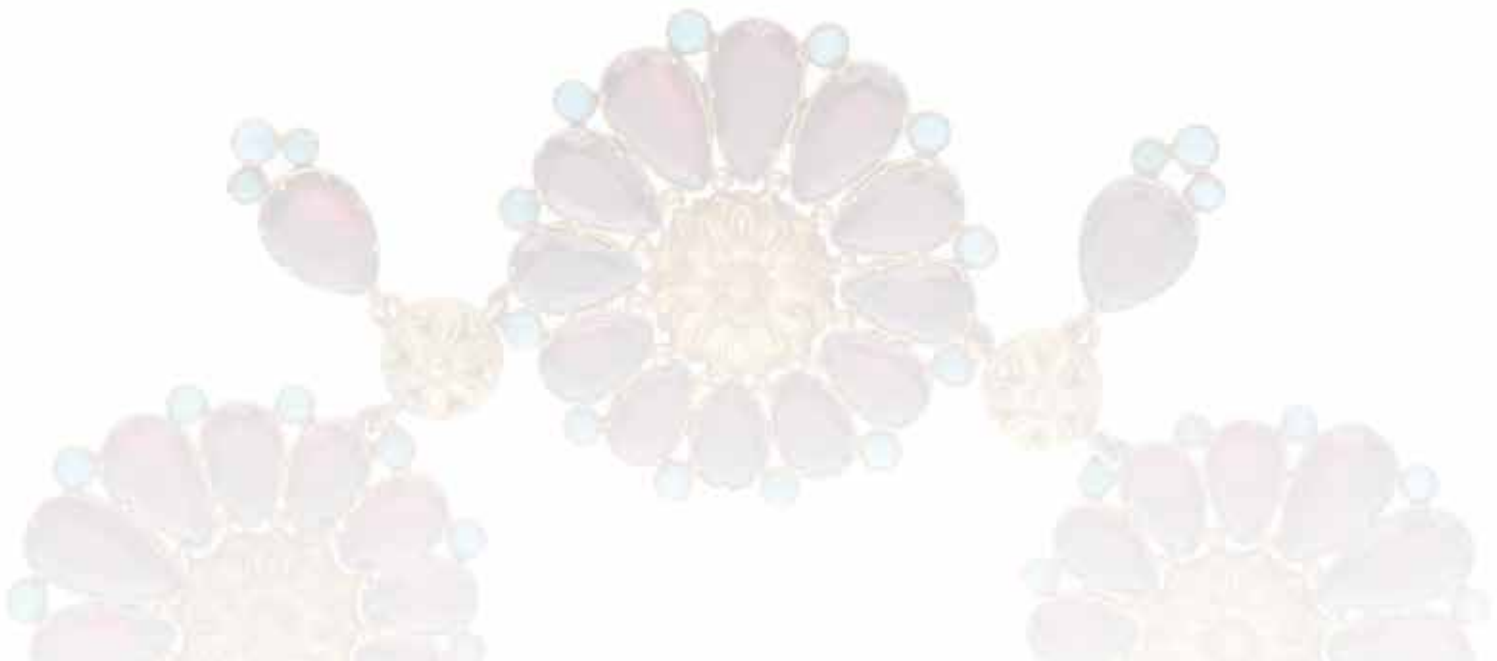
**Please note that all telephone calls are recorded.**

Type of bid (A-Absentee, T-Telephone)	Lot no.	Brief description (In the event of any discrepancy, lot number and not lot description will govern.) If you are bidding online there is no need to complete this section.	MAX bid in US\$ (excluding premium and applicable tax) Emergency bid for telephone bidders only*

**You instruct us to execute each absentee bid up to the corresponding bid amount indicated above.**

\* Emergency Bid: A maximum bid (exclusive of Buyer's Premium and tax) to be executed by Bonhams only if we are unable to contact you by telephone or should the connection be lost during bidding.

BY SIGNING THIS FORM YOU AGREE THAT YOU HAVE READ AND UNDERSTAND OUR CONDITIONS OF SALE AND SHALL BE LEGALLY BOUND BY THEM, AND YOU AGREE TO PAY THE BUYER'S PREMIUM, ANY APPLICABLE TAXES, AND ANY OTHER CHARGES MENTIONED IN THE BUYER'S GUIDE OR CONDITIONS OF SALE. THIS AFFECTS YOUR LEGAL RIGHTS.	
Your signature: _____	Date: _____



EB 1793

**Bonhams**

7601 W. Sunset Boulevard  
Los Angeles, California 90046

+1 323 850 7500  
+1 323 850 6090 (fax)

