

THE DR. SYLVAN AND FAITH GOLDBER COLLECTION OF FINE CHINESE SNUFF BOTTLES PART I

Monday September 11, 2017



Bonhams

NEW YORK



THE DR. SYLVAN AND FAITH GOLDER COLLECTION OF FINE CHINESE SNUFF BOTTLES PART I

Monday September 11, 2017, at 10am
New York

BONHAMS

580 Madison Avenue
New York, New York 10022
bonhams.com

PREVIEW

Thursday September 7
10am to 5pm
Friday September 8
10am to 5pm
Saturday September 9
10 am to 5pm
Sunday September 10
10am to 5pm

SALE NUMBER

24661

CATALOG: \$35.00

BIDS

+1 (212) 644 9001
+1 (212) 644 9009 Fax
Email: bids.us@bonhams.com

TELEPHONE BIDDING

Telephone bidding will only
be available for lots with a low
estimate in excess of \$1000.

Please note that telephone bids
must be submitted no later than
4pm on the day prior to the
auction. New bidders must also
provide proof of identity and
address when submitting bids
failure to do so may result
In your bid not being processed.

Live online bidding is available for this sale

Please email bids.us@bonhams.com
with 'live bidding' in the subject
line 48 hours before the auction
to register for this service.

INQUIRIES

Bruce Maclaren - Senior
Specialist
+1 (917) 206 1677
bruce.maclaren@bonhams.com

Nicholas Rice - Specialist
Head of Sale
+1 (917) 206 1622
nicholas.rice@bonhams.com

Ming Hua - Junior Specialist
+1 (646) 837 8132
ming.hua@bonhams.com

Dessa Goddard -Director
Head, Asian Art Group U.S.
+1 (415) 503-3333
dessa.goddard@bonhams.com

Please contact client services
with any bidding inquiries.

CLIENT SERVICES

Monday to Friday 9am-5pm
+1 (212) 644 9001
+1 (212) 644 9009 Fax

ILLUSTRATIONS

Front cover: Lots 9042, 9043, 9070
Inside front cover: Lot 9086
Inside back cover: Lot 9010
Back cover: Lot 9117

Please see pages 68 to 70,
for bidder information including
Conditions of Sale, after-sale
collection and shipment.

INTERNATIONAL CHINESE CERAMICS AND WORKS OF ART TEAM



Colin Sheaf



Dessa Goddard



Asaph Hyman

USA



Bruce MacLaren
Chinese Paintings
and Works of Art
New York



Nicholas Rice
Chinese Art
New York



Ming Hua
Chinese Art
New York



Harold Yeo
Chinese Art
New York



Henry Kleinhenz
Chinese Art
San Francisco



Daniel Herskee
Chinese Art
San Francisco



Ling Shang
Chinese Art
San Francisco



Amelia Chau
Chinese Paintings
San Francisco

ASIA AND AUSTRALIA



Xibo Wang
Hong Kong



Gigi Yu
Hong Kong



John Chong
Hong Kong



Edward Wilkinson*
Hong Kong



Yvett Klein
Sydney

EUROPE



Benedetta Mottino
London,
New Bond Street



Sing Yan Choy
London,
New Bond Street



Edward Luper
London,
New Bond Street



Rachel Hyman
London,
Knightsbridge



Rosangela Assennato
London,
Knightsbridge



Ben Law Smith
London,
Knightsbridge



Ian Glennie
Edinburgh



Asha Edwards
Edinburgh

ASIA REPRESENTATIVES



Summer Fang
Taipei



Bernadette Rankine
Singapore

* Indian, Himalayan & Southeast Asian Art

**THE DR. SYLVAN AND FAITH GOLDER
COLLECTION OF FINE CHINESE SNUFF BOTTLES**
Lots 9000 - 9125





THE DR. SYLVAN AND FAITH GOLDER COLLECTION

It is rare to meet such an elegant couple as Sylvan and Faith Golder, whose interests and hobbies were completely aligned with the other throughout their lives together. Married for 71 years, Sylvan and Faith lived their whole life in and around Cincinnati, where Sylvan practiced medicine in Covington, Kentucky for over 45 years, excepting his service in WWII as an Army doctor.

Faith was born in Cincinnati growing up there with her brother, Billy, with whom she remained very close throughout their lives. She always had an intense curiosity and love of learning, earning two scholarships at Walnut Hills High School to attend the University of Cincinnati. Whilst at UC, majoring in science, she met Sylvan, staying in touch with him after she left college, and marrying him in 1943. After their two children, Pat and Stuart, were grown Faith returned to UC to major in French Literature, graduating in 1982. Faith not only loved French literature, but also everything about France, taking regular trips there with Sylvan for over thirty years, and recording every detail in her treasured scrapbooks. Faith and Sylvan lived life at full speed, showing a cheerful passion and energy for even the simplest things, taking family members and many close friends along with them on their adventures near and far.

Without exception, Sylvan's friends, and patients, all speak of him as a true gentleman, with a consistently gentle spirit and a goodness that touched many people's lives. The Rabbi at his memorial service described Sylvan as "Gold on the inside and outside" in his approach to living his life and in helping to care for others.

Sylvan, together with Faith, was a lifelong international traveler, and often, it was on these travels that they added to their collections of Chinese archaic jade, scholars' objects and their great passion - snuff bottles, of which they purchased their first examples in 1967. On their travels, they met dealers the world over and from the beginning kept meticulous records of their acquisitions from established dealers such as the Asian Art Studio (Clare and Michael Chu), Frank Caro, John Ford Assoc., Fu Ming Fair Antiques, Robert Hall, Hartman Rare Art, Robert Kleiner, Jade House, Wang Ning and Y. F. Yang.

From Florence Eleanor Ueltzen at Fu Ming Fair Antiques came lot 9043, a well-hollowed double-gourd shaped jadeite bottle of vivid apple-green color (estimate \$4,000-6,000). From the esteemed estate of Lauren Bacall, and exhibited at the Taft Museum of Art in Cincinnati in 1997, it is an immensely appealing example. Also originally from Fu Ming Fair Antiques, via the Asian Art Studio, came lot 9000, a magnificent 18th century white nephrite bottle of rectangular form, well hollowed and carved with eight bronze vessels; the subject matter of the Hundred Antiques more usually seen on glass overlay or molded porcelain snuff bottles (estimate \$15,000-25,000).

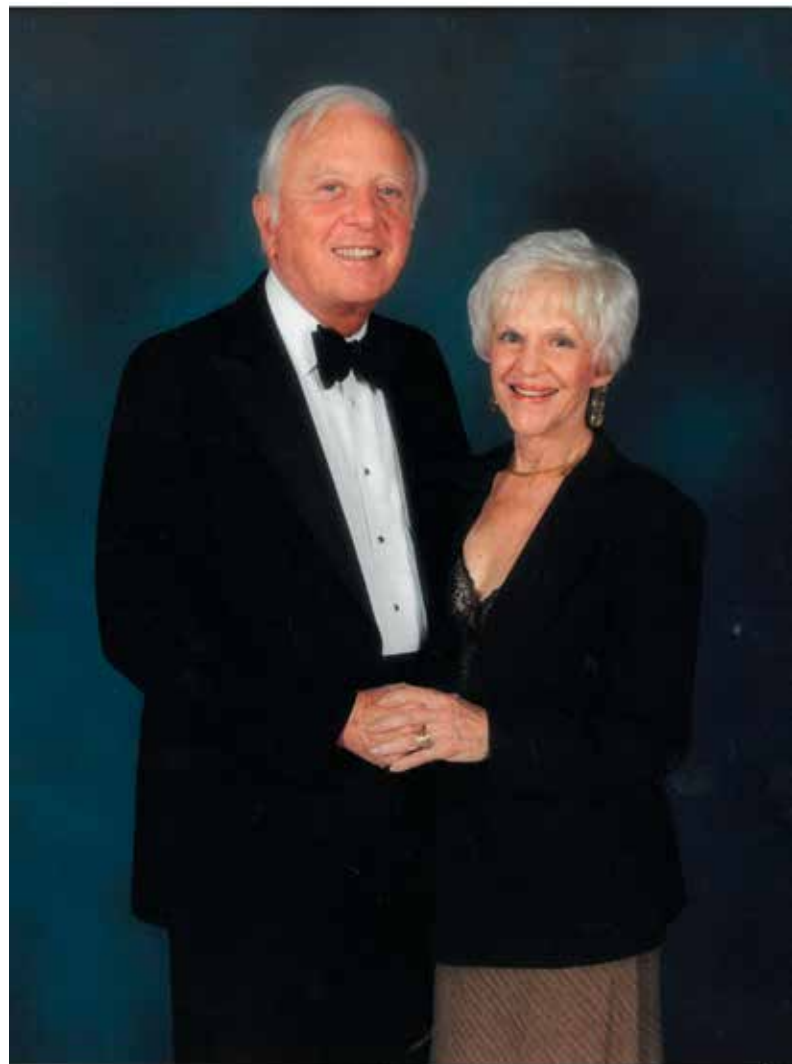
Sylvan and Faith were an essential part of the fabric of Cincinnati life. They were well known in Cincinnati society for their generosity, eventually donating their collection of archaic jade and other jade pieces to the Cincinnati Art Museum. Over the years Sylvan and

Faith added immeasurably to the culture of the city's arts. They were founder members of the Asian Art Society of Cincinnati at the Art Museum, and were active at the Taft Museum of Art, where Faith served on the museum board for over ten years. In February to April 1997, Faith was involved in a show at the Taft Museum of Art when a selection of their collection of 550 snuff bottles was exhibited, including the aforementioned jadeite double-gourd shaped bottle. Sylvan, along with Faith enjoyed collecting snuff bottles for many years throughout the 1960's and 70's, continuing to acquire interesting and appealing pieces until Faith passed away in January 2015. Faith once revealed that her initial interest in snuff bottles came from a love of gemstones and minerals, inspired by her father's work as a jeweler and her brother's career as a gemologist. In this sale are a number of bottles that reflect Faith's interest in this material group. Lot 9070 is a superb 18th century lapis lazuli bottle, well hollowed, of pear shape, carved in low relief with a design of dragons on both sides, and with excellent provenance, having been purchased in 1979 from John Ford Assoc. (estimate \$4,000-6,000). Also purchased in 1979 from the same dealer was lot 9042, a stellar 18th century coral bottle, of ovoid form, carved in low relief on each main side with stylized confronting dragons (estimate \$18,000-25,000).

Sylvan and Faith enjoyed attending the annual conventions of the International Chinese Snuff Bottle Society (ICSBS) if at all possible when Sylvan's work permitted it, with their first convention being in Kansas City in 1976. Amongst other hobbies, Sylvan and Faith loved to dance and were thrilled to show off their tango at the final night banquets at the conventions! As with many collectors at the ICSBS annual conventions, they made many close lifelong friends with whom they could share the excitement of a new purchase. At the convention in Washington, D.C. in 2000 Sylvan and Faith acquired lot 9086, a yellow and russet jade bottle, superbly carved using the rich russet-brown skin with figures in a boat floating on the river, all set in a mountainous landscape (estimate \$8,000-10,000).

Sylvan and Faith were also consistently part of the group of collectors which met annually in Cape Cod, MA for the Asian auctions held every summer at Eldred's Auction House. In 1986, they purchased lot 9069, a fine mid-19th century Yixing snuff bottle, of circular form, decorated using various shades of blue and white enamel with a pavilion in a mountainous landscape overlooking a meandering river (estimate \$5,000-7,000).

Faith was a poet who was moved to write about nature, and who found her inspiration for Haiku when the cherry trees were blossoming in Eden Park in Cincinnati. Within the snuff bottle collection, this was reflected in a group of predominantly glass overlay bottles in red and blue, which depict prunus blossoms on them, some of which have a prunus flower head carved on the base using the overlay color. Lot 9065, is a fine 18th century example of a blue overlay on snowflake glass, carved with prunus, peony and rockwork, purchased from Clare Lawrence Ltd. (Clare Chu) in 1997 with the additional provenance of the Dodge Collection and Arthur Loveless, Seattle, 1961 (estimate \$3,000-5,000).



Also reflecting Faith's love of nature is lot 9020, an imperial famille-rose enamel on white glass bottle of meiping form, decorated with lotus leaves, pods and flowers with a trio of enameled imperial marks – Guyue Xuan, Shang Shang and the more usual Qianlong nianzhi mark, and being of the period, purchased by Sylvan and Faith from Dr. Walter Langsam, former President of the University of Cincinnati, who passed away in 1985 (estimate \$15,000-20,000).

There is a strong showing of porcelain bottles in this collection, with a good number of them decorated in underglaze cobalt blue, both on soft and hard paste porcelain. Lot 9120, is a 19th century soft paste porcelain example, the cylindrical body finely decorated in underglaze blue with dragons, sporting an attractive estimate of \$1,000-2,000.

Bonhams is proud to offer part one of Dr. Sylvan and Faith Golder's collection of fine Chinese snuff bottles during Asia Week this September, along with a selection of their works of art and scholars' objects, with the knowledge that both Sylvan and Faith would have been delighted to share their collection with other aficionados.

CLARE CHU



西爾萬與菲思·戈爾登夫婦珍藏中國鼻煙壺

西爾萬與菲思·戈爾登夫婦的一生都是在辛辛那提度過。二戰期間，西爾萬曾擔任隨軍醫生，之後一直在肯塔基州的肯溫頓行醫。兩人相濡以沫，一起共同走過了七十一年。

戈爾登夫人出生於辛辛那提，和哥哥比爾一起在那裡長大。從小戈爾登夫人就對各種事物有很強的好奇心。高中畢業後，她憑優異的成績獲得了兩項獎學金，進入到辛辛那提大學學習自然科學專業。在大學期間，菲思認識了西爾萬，兩人於1943年喜結連理。婚後不久，他們的孩子菲利浦和斯圖爾特相繼出生。在等孩子們稍大些之後，戈爾登夫人決定重返大學，專攻法國文學，於1982年獲得學位畢業。戈爾登夫人不僅對法國文學有強烈的興趣，她對法國的一切都著迷，所以夫婦倆常常去法國旅行，戈爾登夫人更是在她的記事本上記錄下了他們旅行中的點點滴滴。

戈爾登先生是一位心地善良，廣受朋友和病人尊敬的醫生。在多年的行醫生涯裡，他一直努力幫助病人，救死扶傷。在他的告別儀式上，拉比形容戈爾登先生不論是外表還是內心，都如同金子一般。

戈爾登夫婦兩人都十分熱愛旅行。常常正是在這些旅行途中，他們逐步建立起了自己的收藏——包括中國高古玉器、文房、鼻煙壺以及其他藝術品。同時，他們也在收集作品的過程中認識了很多古董商，如亞洲藝術工作室 (Clare and Michael Chu)、Frank Caro、John Ford Assoc.、Fu Ming Fair Antiques、Robert Hall、Hartman Rare Art、Robert Kleiner、Jade House、王寧和同豐行。1967年，戈爾登夫婦購買了他們的第一隻鼻煙壺。在以後的收藏生涯裡，夫婦倆每次都會把藏品的原始購買憑據保留作記錄，以做到流傳有序。

這次的拍賣裡，尤其值得關注的作品有拍品號9043的翠玉葫蘆式鼻煙壺。該件作品原屬Laruen Bacall舊藏，戈爾登夫婦從Fu Ming Fair Antiques的Florence Eleanor Ueltzen處購得，1997年該件拍品在辛辛那提Taft美術館展出。另外一隻通過亞洲藝術工作室獲得，來自Fu Ming Fair Antiques的鼻煙壺是拍品號為9000的18世紀白玉雕博古紋鼻煙壺，壺身潔白光潤，並飾有各式青銅器和香爐。類似的博古題材在鼻煙壺作品裡通常出現於套料或模印鼻煙壺，而白玉雕則極為少見，該件作品此次的估價為15,000-25,000美金。

戈爾登夫婦過去一直活躍於辛辛那提的文化社交界，並為該市的文化事業做出了很大的貢獻。他們是辛辛那提美術館的亞洲藝術協會發起人之一，戈爾登夫人曾作為美術館董事會成員為美術館的建設和展覽活動作出了很多貢獻。在1997年Taft美術館層展出了戈爾登夫婦收藏的550件鼻煙壺，其中包括在上文中提到的拍品9043號拍品翠玉葫蘆式鼻煙壺。

60和70年代是戈爾登夫婦收藏鼻煙壺最為活躍的時期，此後他們還收集了一些其他藝術品。他們的收藏活動一直到戈爾登夫人於2015年去世停止。戈爾登夫人曾提到，她收藏鼻煙壺的興趣源自她對寶石和礦石的熱愛。事實上，戈爾登夫人的父親是一位珠寶商，哥哥則是一位寶石學家。在父親和哥哥的影響下，戈爾登夫人逐漸對由不同材質做成的鼻煙壺產生了興趣。這次的拍品裡，拍品號9070即為一件18世紀青金石雕夔龍紋鼻煙壺，壺身上藝術家以浮雕的手法在兩面各刻有夔龍。該件作品是1979年夫婦從John Ford Assoc.處購得。另一件從同一賣家於同一年購得的是估價為18,000-25,000美金的9042號拍品——18世紀珊瑚雕夔龍紋鼻煙壺。

自從1961年在堪薩斯城首次參加了國際鼻煙壺協會的年會，戈爾登夫婦很快成為了協會年會的常客。在年會上，他們不僅遇到了很多同樣喜愛鼻煙壺的藏家，也和很多藏家成為了終身摯友，相互交流收藏品和新近獲得的鼻煙壺。2000年在華盛頓舉行的鼻煙壺年會上，戈爾登夫婦獲得了本次拍品號為9086的青黃玉留皮巧雕赤壁圖鼻煙壺。這件鼻煙壺巧妙的結合玉石的材質特點，藝術家在包裹著青玉的方寸黃皮上雕刻出栩栩如生的赤壁人物和風景，實為精妙。而除了參加國際鼻煙壺協會活動，戈爾登夫婦也經常參加每年夏天在麻省鱈魚角（Cape Cod）的Eldred's Auction House舉行的亞洲藝術品拍賣會。1986年，他們在Eldred's成功競拍到了一隻19世紀宜興紫砂加彩山水圖鼻煙壺（拍品號9069），在細膩的壺身上，藝術家用各色藍白釉描繪出一幅精緻細膩的山水畫。

戈爾登夫人不僅熱愛收藏藝術品，也是一位從大自然中汲取創作靈感的詩人。當坐落於辛辛那提的亞當公園櫻花盛開時，戈爾登夫人甚至會信手拈來作幾首俳句。出於對自然的熱愛，在其收藏中，觀眾會發現有很大部分鼻作品都是套紅料或藍料的梅花紋鼻煙壺。例如拍品9065號是一件18世紀白地套藍料梅花牡丹紋鼻煙壺。該件作品是1997年從Clare Lawrence Ltd. 處購得，原為Dodge Collection和西雅圖的Arthur Loveless所擁有。



另一件戈爾登夫人鍾愛的以花卉為題材的鼻煙壺是估價為15,000-20,000美金的清乾隆白料胎畫琺瑯蓮塘圖鼻煙壺（拍品號9020），該件作品壺身上分別落有「古月軒」、「上賞」、「乾隆年製」款。這只鼻煙壺是戈爾登夫婦由辛辛那提大學前任校長Walter Langsam博士處購得。

除了上述介紹的鼻煙壺之外，本次拍賣還包括了一組製作精良的瓷器鼻煙壺，其中有些是用釉下青花作裝飾。例如拍品9120是一件19世紀青花龍紋鼻煙壺，估價僅為1000-2000美金。

今年九月紐約亞洲藝術週拍賣週期間，戈爾登夫婦珍藏的部分中國鼻煙壺將由邦瀚斯主持拍賣，藉此機會我們衷心期望能與各方藝術品愛好者共同分享戈爾登夫婦的鼻煙壺收藏。

CLARE CHU





9000 (two views)

9000

A WHITE JADE 'BRONZE RITUAL VESSELS' SNUFF BOTTLE

1750-1800 Probably imperial, attributed to the Palace workshops
Of flattened rounded rectangular form, carved in low relief with depictions of ancient bronze vessels, including rectangular *ding*, *yan*, tripod censors, and covered censors, the translucent stone of an even white color with cloudy inclusions and refined polish.
2 5/8in (6.8cm) high

US\$15,000 - 25,000

1750-1800年 白玉雕博古紋鼻煙壺

Provenance

Asian Art Studio, 2005
Fu Ming Fair Antiques

9001

A LAVENDER JADEITE SNUFF BOTTLE

1780-1850

Of elegant ovoid form with a cylindrical neck and flat foot, the stone of a lilac color with hints of white and amber.
2in (5cm) high

US\$4,000 - 6,000

1780-1850年 紫羅蘭翠玉光素鼻煙壺



9001



9002

9002

AN AGATE 'MALLOW' SNUFF BOTTLE

1750-1860

Of upright form, the lip slightly concave, the oval foot also concave, the two principal sides carved to resemble the overlapping petals of a mallow flower.

1 7/8in (4.7cm) high

US\$1,000 - 2,000

1750-1860年 瑪瑙雕葵花紋鼻煙壺

Provenance

Vanessa Holden, April 2002



9003

9003

AN AGATE SNUFF BOTTLE

1750-1860

Very well-hollowed, of square outline with rounded sides, the surfaces unadorned to display the thinness of the walls, the darker inclusion on the foot carved to form an oval foot ring enclosing two characters in seal script reading *yunxiang* (accumulating fragrance).

2 1/8in (5.5cm) high

US\$2,500 - 4,000

1750-1860年 瑪瑙光素鼻煙壺 《蘊香》款

Provenance

Hartman Rare Art, New York, 1975



9004

9004

A BANDED AGATE SNUFF BOTTLE

1750-1860

Of compressed upright form, with a flat lip, the bottle supported on an oval foot ring surrounding a slightly recessed foot, the stone with white horizontal bands attractively contrasted with faint vertical bands.

2 3/8in (6cm) high

US\$1,500 - 2,500

1750-1860年 瑪瑙天然玉帶紋鼻煙壺

Provenance

Purchased Washington D.C., 1975

9005

A 'REALGAR' GLASS SNUFF BOTTLE

1730-1800 Possible imperial

Of flattened rounded form, surmounted by a tubular neck and supported on an oval foot ring, the swirled ochre glass splashed with bright red in imitation of realgar.

2 1/2in (6.3cm) high

US\$2,000 - 3,000

1730-1800年 料仿雄黃鼻煙壺

Provenance

Asian Art Studio, 2009

Thompson Collection, Tennessee



9005

9006

A YELLOW GLASS SNUFF BOTTLE

1740-1800 Imperial, attributed to the Palace workshops

Of flattened spherical form with a flat foot, the flat short sides leading to the gently waisted neck, the opaque glass of a bright lemon-yellow color.

2 1/4in (6cm) high

US\$3,000 - 5,000

1740-1800年 明黃料光素鼻煙壺

Provenance

Asian Art Studio, March, 2004



9006

9007

A TURQUOISE GLASS SNUFF BOTTLE

1750-1820

Of flattened rounded form with a cylindrical neck and oval foot ring, the shoulder carved with mock lion mask and ring handles.

2 5/8in (6.8cm) high

US\$1,500 - 2,500

1750-1820年 孔雀綠料鋪首耳鼻煙壺

Provenance

Peter and Marion Bozzo Collection, 1991



9007



9008

9008

TWO CRYSTAL SNUFF BOTTLES

1750-1860

The first of upright form with sloping shoulders and fixed ring mask handles to the narrow sides, supported by an oval foot rim, the stone of excellent clarity; the second a smoky crystal example, the exterior carved with a basket-weave pattern, the oval foot rim recessed.
2 3/4in (6.7cm) height of taller

US\$2,000 - 3,000

1750-1860年 水晶及茶晶鼻煙壺兩件

Provenance

The clear crystal bottle: Frank Caro

The smoky crystal bottle: Eldred's Auctions, Massachusetts, 1996

9009

A ROCK CRYSTAL 'SILVER DOLLAR' SNUFF BOTTLE

1792-1860

Of circular outline with a small concave foot, carved in low relief to resemble a Spanish eight-reales coin, one side with the profile of Charles III, inscribed with the year 1792, the other with the Spanish coat of arms.

2 3/8in (6.2cm) high

US\$1,500 - 2,000

1792-1860年 水晶雕銀幣紋鼻煙壺

Provenance

Bulgari, Rome, Italy, 1979

Another example of a crystal 'Charles III of Spain' snuff bottle from the Mary and George Bloch Collection was sold in our Hong Kong rooms, 27 May 2012, lot 104.



9009



9010 (two views)

9010

AN INSIDE-PAINTED CRYSTAL SNUFF BOTTLE

Attributed to Ma Shaoxuan, circa 1900

One side of the rectangular bottle delicately painted with a scene of the two Qiao sisters seated on a bench reading a book, with an inscription identifying the scene above, the other side painted with Longnu dressing her hair after a bath, also with an inscription identifying the scene above.

2 1/2in (6.3cm) high

US\$6,000 - 8,000

約1900 馬少宣內畫水晶喬家姊妹圖鼻煙壺

Provenance

Private Cincinnati Collection, 2014

The Qiao sisters were a favorite subject of Ma Shaoxuan and he used that motif throughout his career with only minor variations. For two examples sold in our Hong Kong rooms, see one from the Paul Braga Collection, 24 Nov 2012, lot 6, and another, dated to 1901 in the Mary and George Bloch Collection, illustrated by Moss, Graham and Tsang, *A Treasury of Chinese Snuff Bottles: The Mary and George Bloch Collection*, vol.4, Hong Kong, 2000, pp.392-393, no.586, was sold 28 November 2011, lot 40.

9011

A ROCK CRYSTAL 'MALLOW FLOWER' SNUFF BOTTLE

1750-1860

Of flattened rounded form, surmounted by a cylindrical neck, each face carved and incised with an open mallow blossom, the sides with mock lion mask and ring handles, supported on an oval foot ring.

2 1/8in (5.5cm) high

US\$2,000 - 3,000

1750-1860年 水晶雕葵花紋鼻煙壺

Provenance

Acquired in 1993



9011



9012

THREE PORCELAIN SNUFF BOTTLES

19th century

The first of tall, cylindrical form, the neck waisted and the foot rim unglazed, the body with two iron-red dragons chasing a flaming pearl above waves in green enamel; the second of baluster form with a waisted neck, the body with a heroic figure in underglaze blue with a three character *Xi Tang zhi* mark in underglaze blue to the foot; the third of cylindrical form with a broad lip, the body in underglaze blue depicting a warrior departing a city gate, the foot unglazed with concentric circles.

3 7/8in (9.8cm) height of tallest

US\$1,200 - 1,500

十九世紀 瓷胎鼻煙壺三件

Provenance

The iron-red bottle: Asian Art Studio
 John Sinclair, California, no 262

9012



9013

THREE PORCELAIN SNUFF BOTTLES

19th century/early 20th century

All of cylindrical form, the first with a rounded lip and unglazed foot rim, the body with famille-rose enamels depicting Zhong Kui with mischievous demons; the second bottle with underglaze blue depicting a continuous scene of boys at play in a garden; the third bottle tapering at the shoulder with a dragon and a phoenix in famille-rose enamels, the dragon's scales highlighted with gilding, a stamped four character Hongxian mark on the foot.

3 1/8in (8cm) height of tallest

US\$1,200 - 1,500

十九世紀/二十世紀初 瓷胎鼻煙壺三件

Provenance

The famille-rose bottle: Dennis Crow, 1996

9013

9014

A RED OVERLAY SNOWFLAKE GLASS 'KUILONG' SNUFF BOTTLE

1750-1820

Of flattened rounded shape, the bubble suffused ground overlaid with the ruby red glass overlay carved as four *kuilong* forming the character *long* (dragon), with similar dragons on the narrow sides, and an oval foot ring at the base.

2 3/8in (6cm) high

US\$2,500 - 4,000

1750-1820年 雪霏地套紅料龍字紋鼻煙壺

Provenance

Sotheby's London 3 March 1987 lot 21

Eric Young Collection



9014

9015

A BLUE OVERLAY SNOWFLAKE GLASS 'KUILONG' SNUFF BOTTLE

1750-1820

Of flattened rounded shape, the dense bubble-suffused ground overlaid with a layer of blue carved to form a pair of stylized confronting *kuilong* on each side, mock lion mask and ring handles on the shoulders and an oval foot ring at the base.

2 1/2in (6.3cm) high

US\$2,000 - 3,000

1750-1820年 雪霏地套藍料夔龍紋鼻煙壺



9015

9016

A RED OVERLAY SNOWFLAKE GLASS 'MALLOW FLOWER' SNUFF BOTTLE

1750-1820

of flattened rounded shape, the bubble-suffused transparent ground overlaid with a layer of ruby-red glass, carved on each side as an open mallow flower, on the shoulders as mock lion mask and ring handles, and on the base as the oval foot ring.

2 3/8in (5.7cm) high

US\$3,000 - 5,000

1750-1820年 雪霏地套紅料葵花紋鼻煙壺

Provenance

Hugh Moss Ltd., Paris, 1995



9016



9017

9018

9019

9017

**A FAMILLE-ROSE MOLDED PORCELAIN
SNUFF BOTTLE**

Qianlong mark, 1795-1850

Of compressed ovoid form, the everted lip gilded, molded to depict the eight Daoist immortals, each astride a quadruped, riding through a cloudy landscape, brightened by polychrome enamels, the oval foot rim unglazed, with a four-character iron-red mark on the foot.

2 3/4in (7cm) high

US\$2,000 - 3,000

1795-1850年 粉彩模印八仙圖鼻煙壺 《乾隆年製》款

9018

**A FAMILLE-VERTE PORCELAIN
'KATYDID' SNUFF BOTTLE**

1820-1850

Of pebble form, with a wide mouth, each side delicately enameled with an animated katydid. *2 3/8in (6cm) high*

US\$2,000 - 3,000

1820-1850年 五彩蠅紋鼻煙壺

Provenance

Eldred's Auction, Massachusetts, 1997

9019

**A FAMILLE-ROSE PORCELAIN
SNUFF BOTTLE**

1820-1850

Of pebble form, enameled to depict boys at play in a continuous scene, some of their clothing highlighted with gilt accents. *2 1/2in (6.3cm) high*

US\$2,000 - 3,000

1820-1850年 粉彩戲嬰圖鼻煙壺

Provenance

Purchased Washington, D.C., 1998

9020

AN ENAMELED GLASS 'LOTUS' SNUFF BOTTLE

Imperial, Qianlong mark and of the period

Of tapering ovoid form, delicately enameled around the body with a continuous band of blossoming lotus and leaves with butterflies fluttering above, the shoulder encircled with a band of confronted stylized foliate dragons divided from each other by two circular discs inscribed *shang shang* (superior appreciation), the band suspending beaded medallions incorporating the four-character mark, the flat base with traces of a iron-red mark, *Guyue Xuan*.

2 1/8in (5.5cm) high

US\$15,000 - 25,000

清乾隆 白料胎畫琺瑯蓮塘圖鼻煙壺 《上賞》 《乾隆年製》款

Provenance

Dr. Walter Langsom Collection

Although the mark on the base is very faint, the type of glass, the form, restrained palette, style of painting, and enamels all link this to the intriguing group of mid-Qianlong enamels produced at the court for a few years starting from mid-1767.

For another enameled glass snuff bottle, with similar subject matter, style of mark and enamelling technique, with iron-red *Guyue Xuan* seal mark, and sold in our Hong Kong rooms, 27 May 2012, lot 99, see Hugh Moss, Victor Graham and Ka Bo Tsang, *A Treasury of Chinese Snuff Bottles: The Mary and George Bloch Collection*, vol.6, part I, Hong Kong, 2008, no. 1088, and another, also sold in our Hong Kong rooms, 25 May 2011, lot 90, and illustrated op. cit., no. 1089. One example without the *Guyue Xuan* mark, but again of a similar style and possibly by the same hand, is illustrated op. cit., no. 1087.





9021

9021

TWO AGATE SNUFF BOTTLES

1750-1860

Both very well-hollowed, the first with cloud-like markings, of flattened pear shape, with a wide short neck, supported on a flat foot; the second of moss agate in a rounded rectangular shape with mock lion mask and ring handles on the shoulders. 2 1/4in (5.7cm) height of taller

US\$2,000 - 3,000

1750-1860年 瑪瑙鼻煙壺兩件

Provenance

The pear-shaped bottle: Asiantiques, Florida, 1997

The moss agate bottle: Eldred's Auction, Massachusetts, 1995

For a discussion on agate bottles with similar cloud-like markings see Hugh Moss, Victor Graham and Ka Bo Tsang, *A Treasury of Chinese Snuff Bottles: The Mary and George Bloch Collection*, vol. 2, part 1, Hong Kong, 1998, p. 208.



9022

9022

TWO QUARTZ SNUFF BOTTLES

1750-1860

Both well-hollowed, the first of smoky quartz, in a flattened ovoid shape with mock lion mask and ring handles carved on the shoulders; the second of rutilated quartz, in a rounded rectangular shape, also with mock lion mask and ring handles carved to the shoulders, the stone densely packed with black tourmaline 'needles'. 2 1/2in (6.3cm) height of taller

US\$1,500 - 2,000

1750-1860年 茶晶鼻煙壺及髮晶鼻煙壺兩件

Provenance

Rutlated quartz bottle: Private Cincinnati Collection, 2014



9023

9023

TWO AGATE SNUFF BOTTLES

1750-1860

The first of rounded form with a flat lip and concave oval foot, one side of the bottle with dendritic inclusions resembling trees; the second bottle of rounded rectangular form with a flat lip and a shallow oval foot rim, the body carved in low relief with a cameo design of a figure holding a flower, at his foot a quail. 2 1/4in (5.7cm) height of taller

US\$2,000 - 3,000

1750-1860年 瑪瑙鼻煙壺兩件

Provenance

The rounded bottle: Vanessa Holden, 1991

The rectangular bottle: Hartman Rare Art, 1971



9024

9024

A JADEITE SNUFF BOTTLE

1780-1850

Well hollowed, of flattened rectangular form with sloping shoulders, supported on a oval foot ring, the beauty of the stone complimented by the simplicity of the form, the icy-white stone with emerald-green splashes.

2 5/8in (6.8cm) high

US\$5,000 - 7,000

1780-1850年 翠玉光素鼻煙壺

Provenance

Private Cincinnati Collection

9025

No lot



9026

9026

A JADEITE SNUFF BOTTLE

1780-1850

Of flattened ovoid form, with a cylindrical neck and oval foot ring, the surfaces unadorned to display the ideal beauty of the icy stone with bright green mottling.

2 1/2in (6.3cm) high

US\$3,000 - 5,000

1780-1850年 翠玉光素鼻煙壺

Provenance

John Ford Associates, 1979



9027

9027

**TWO TRANSPARENT GLASS
SNUFF BOTTLES**

1750-1850

The first of compressed globular form, the lip flat, the foot carved as the stem of a lotus, the body with sapphire blue splashes; the second of upright form, the shoulders rounded, with a flat lip and a rounded oval foot rim, the clear glass with a faint blue hue imitating aquamarine.

2 1/2in (6.3cm) height of taller

US\$1,500 - 2,500

1750-1850年 透明料鼻煙壺兩件

Provenance

Dorothea Esty, 1972, both bottles



2028

9028

**TWO OVERLAY WHITE GLASS
SNUFF BOTTLES**

Yangzhou School, 1800-1900

The first of upright rectangular form with a flat lip and an oval foot rim, the blue and pink overlay carved as birds and flowers next to ornamental garden rocks, with fixed ring mask handles to the sides; the second of compressed form with a flat lip and an oval foot rim, the pink overlay carved as figures in front of altars supporting bronze vessels, fixed ring mask handles to the sides.

2 3/8in (6cm) high, the taller

US\$1,200 - 1,500

1800-1900年 揚州作白地套料鼻煙壺兩件

Provenance

The blue and pink overlay bottle: acquired 1967

The pink overlay bottle: Private Cincinnati Collection, 2014



2029

9029

TWO GLASS SNUFF BOTTLES

1780-1900

The first of flattened pear form, the lip thin and flat, the bubble suffused ground overlaid with green glass carved as a phoenix on one side, reversed with a dragon, the bottle supported by an oval foot rim; the second of transparent blue glass, with raised panels on the front and back and fixed ring mask handles on the narrow sides, supported by an oval foot rim.
3in (7.5cm) high, the taller

US\$1,500 - 2,000

1780-1900年 料胎鼻煙壺兩件

Provenance

The transparent blue bottle: purchased Paris, 1995
 The dragon and phoenix bottle: Asian Art Studio, 2013
 Private Pennsylvania Collection

9030

A RED OVERLAY TRANSPARENT GLASS 'CHILONG' SNUFF BOTTLE

1750-1800

Of flattened globular form, the transparent red layer carved to form three writhing *chilong* that curl and wrap around the bubble-suffused transparent bottle, supported on the red glass foot.
2 3/8in (5.7cm) high

US\$3,000 - 5,000

1750-1800年 透明地套紅料螭龍紋鼻煙壺

Provenance

Clare Lawrence Ltd., 1987



2030



9031

9031

**A BLUE AND PINK OVERLAY SNOWFLAKE GLASS
SNUFF BOTTLE**

19th century

Of upright form, with a flat lip and an oval foot ring surrounding the convex foot, the bubble suffused ground tinged yellow and overlaid with blue and pink glass attractively carved into a continuous scene of peony, prunus and bamboo.

2 5/8in (6.7cm) high

US\$1,500 - 2,500

十九世紀 雪霏地套藍粉料梅竹牡丹紋鼻煙壺

Provenance

Eldred's Auction, Massachusetts, 2003.



9032

9032

**A RED OVERLAY TRANSPARENT GLASS 'GUANDI'
SNUFF BOTTLE**

1780-1850

Of pear shape, the red overlay used to form the oval foot and carved on each side in a depiction of Guandi riding a horse, the details on the armor, beard and horse's mane and tail all finely incised, the body suffused with bubbles.

2 7/8in (7.3cm) high

US\$3,000 - 5,000

1780-1850年 雪霏地套紅料關帝騎馬紋鼻煙壺

Provenance

Fu Ming Fair Antiques, 1977

9033

**TWO PORCELAIN PURSE-FORM
SNUFF BOTTLES**

19th century

The first decorated in underglaze blue, each side painted with a *shou* medallion, the shoulders made with two loops for suspension; the second, decorated in underglaze blue and iron-red with gilt highlights, painted with bats flanking a lotus blossom on one side and peaches on the other.

2 1/8in (5.5cm) height of taller

US\$2,000 - 3,000

十九世紀 青花及青花加彩荷包式鼻煙壺兩件

Provenance

The *shou* medallion bottle: Robert Kleiner, at the International Chinese Snuff Bottle Society, Los Angeles convention, 2003

The lotus and peach bottle: acquired in London, 1977



9033

9034

**TWO UNDERGLAZED-DECORATED
PORCELAIN SNUFF BOTTLES**

19th century

Both of cylindrical form, with Yongzheng seal marks in underglaze blue; the first blue and white reverse-decorated with a dragon pursuing a flaming pearl amid clouds; the second decorated in copper-red with a flying dragon above another emerging from the sea. 3in (7.5cm) high

US\$1,200 - 1,500

十九世紀 青花及釉裏紅龍紋鼻煙壺兩件



9034



9035

9035

**TWO PORCELAIN 'DOUBLE-GOURD'
SNUFF BOTTLES**

19th century

The first a miniature bottle painted in underglaze blue with *sanduo* (Three Abundances) motif beneath bats in clouds; the second painted in underglaze blue and copper-red with a dense overall design of double-gourds growing from vines.

2 1/2in (6.3cm) height of taller

US\$1,000 - 2,000

十九世紀 青花及青花釉裏紅葫蘆式鼻煙壺
兩件

Provenance

The miniature bottle: Robert Kleiner, at the International Chinese Snuff Bottle Society, Los Angeles convention, 2003



9036 (two views)

9036

**A WHITE OVERLAY BLUE GLASS
SNUFF BOTTLE**

1750-1820

Of flattened ovoid form, the translucent white layer carved on one side with a bat grasping a ribbon-tied brush in its mouth flying over churning waves and the rising sun, the other side carved with a pavilion borne on rising clouds, all between pine and peach trees.

2 1/2in (6.3cm) high

US\$2,500 - 4,000

1750-1820年 藍地套白料福如東海紋鼻煙壺

Provenance

Acquired in 1975

9037

TWO OVERLAY GLASS 'CALLIGRAPHIC' SNUFF BOTTLES

1780-1850

Both of flattened ovoid form, the first with the red glass overlay carved as archaic calligraphy on the front and reverse and clamoring dragons on the narrow sides; the second with a cobalt blue overlay carved as fixed ring mask handles to the narrow sides, one face with an inscription in archaic calligraphy reversed with a dragon.

2 7/8in (7.3cm) height of taller

US\$2,000 - 3,000

1780-1850年 雪霏地套料篆書詩句紋鼻煙壺
兩件

Provenance

The red overlay bottle: Arts of China,
Hong Kong 1976

The blue overlay bottle: Y.F. Yang & Co,
Hong Kong 1979



9037

9038

A BLUE OVERLAY WHITE GLASS 'AUSPICIOUS' SNUFF BOTTLE

1780-1850

Of flattened rounded form, the blue layer carved to create a wrap-around scene filled with auspicious imagery including Shoulao handing a monkey a longevity peach, deer with *lingzhi*, a bat and pine tree, the body of milky white glass.

2 1/4in (5.8cm) high

US\$1,500 - 2,500

1780-1850年 涅白地套藍料福祿壽紋鼻煙壺

Provenance

Robert Hall, New York, 1982



9038 (two views)



9039



9040



9041

9039

A RED OVERLAY WHITE GLASS SNUFF BOTTLE

1750-1850

Of compressed form, the overlay carved as a blossoming prunus, the gnarled branches twisted to form the foot rim.

2 1/8in (5.4cm) high

US\$1,200 - 1,500

1750-1850年 白地套紅料枯梅紋鼻煙壺

Provenance

Eldred's Auctions, Massachusetts, 2013

Susan Hickmott Collection

9040

A GREEN OVERLAY SNOWFLAKE GLASS SNUFF BOTTLE

1750-1850

Of flattened globular form, the green layer carved on each side to form a blossoming prunus tree with spreading branches, growing from the foot, carved as an open blossom.

2 1/4in (5.8cm) high

US\$1,500 - 2,500

1750-1850年 雪霏地套綠料梅紋鼻煙壺

Provenance

Y.F. Yang and Co., Hong Kong, 1997

9041

TWO GLASS SNUFF BOTTLES

1730-1820

The first of compressed pear form, with a red glass overlay carved as a single peach on the front and back, and a red glass overlay forming the foot rim; the second bottle with a flat lip and a slightly recessed convex foot surrounded by a rounded oval foot rim, the glass an even ruby red color.

2 3/8in (6cm) height of taller

US\$1,200 - 1,500

1730-1820年 料胎鼻煙壺兩件

Provenance

The ruby red bottle: acquired in Paris 1974

9042

A CORAL 'KUILONG' SNUFF BOTTLE

18th Century Possibly imperial, attributed to the Palace workshops Of flattened ovoid form, surmounted by a tubular neck and supported on an oval foot ring, each side carved in low relief with a pair of confronting archaic upright *kuilong*, their bodies decorated with bosses and C-scrolls, the material displaying variegated shades of peach to deep pink with white inclusions.

2 1/4in (5.8cm) high

US\$18,000 - 25,000

十八世紀 珊瑚雕夔龍紋鼻煙壺

Provenance

John Ford Associates, 1979

9043

A JADEITE 'DOUBLE GOURD' SNUFF BOTTLE

1780-1850

Slightly flattened, supported on a small concave foot with a concave lip, the surface polished to a high luster to display the ideal beauty of the stone with icy-white inclusions and emerald green veining.

2in (5cm) high

US\$4,000 - 6,000

1780-1850年 翠玉葫蘆式鼻煙壺

Provenance

Lauren Bacall

Fu Ming Fair Antiques, 1976

Exhibited

Taft Museum of Art, Cincinnati, Ohio, February to April 1997



9042



9043



9044

9044

A GRAY AND WHITE JADE 'DRAGON' SNUFF BOTTLE

1750-1820

Of flattened rounded form, with a cylindrical neck and concave foot, carved all over with a pattern of dense clouds and a dragon on each side, the gray and white stone with some inclusions and darker veining.

2 1/8in (5.5cm) high

US\$2,500 - 4,000

1750-1820年 灰白玉雕雲龍紋鼻煙壺

Provenance

Acquired in 1967



9045

9045

A 'CHICKEN BONE' JADE SNUFF BOTTLE

1750-1850

Of flattened spherical form, surmounted by a waisted neck and supported on a oval pedestal foot with a concave base, each side carved in low relief with four of the Buddhist 'Eight Auspicious Emblems', *bajixiang*, the opaque white stone with minor gray speckling.

2 3/8in (5.7cm) high

US\$2,000 - 3,000

1750-1850年 雞骨玉雕八吉祥紋鼻煙壺

Provenance

Asian Art Studio
 A private San Francisco Collection

9046

WHITE AND RUSSET JADE SNUFF BOTTLE

1750-1800

Of rounded square form, one side polished flat to display the natural russet inclusions of the stone, the other side rounded and smoothly polished, the foot finely carved an a sinuous *chilong*, the stone of an even white color.

2 3/8in (6cm) high

US\$10,000 - 15,000

1750-1800年 白玉帶皮雕螭龍足鼻煙壺

Provenance

Sotheby Parke Bernet, May 1990



foot



two views



9046A

9046A

A 'CHICKEN BONE' JADE SNUFF BOTTLE

1750-1850

Of flattened rounded form, one side carved in low relief with a seal reading *qianjin yi yuhu* (one jade vessel is worth a thousand pieces of gold), the other with an archaic inscription, the short sides carved with clambering *chilong*, the stone of mottled beige and brown.

2 1/4in (5.8cm) high

US\$2,000 - 3,000

1750-1850年 雞骨玉雕「千金一玉壺」鼻煙壺

Provenance

Fu Ming Fair Antiques

Exhibited

Taft Museum of Art, Cincinnati, Ohio, February to April 1997



9047

9047

A WHITE JADE SNUFF BOTTLE

1780-1820

Of compressed ovoid form, the lip flat, fixed ring handles on the narrow sides, supported by a rounded oval foot rim, the stone with icy white inclusions.

2 1/2in (6.3cm) high

US\$7,000 - 9,000

1780-1820年 白玉雕鋪首耳鼻煙壺



9048

9048

A YELLOW JADE SNUFF BOTTLE

1750-1800

Of rounded rectangular outline, supported on an oval foot ring and surmounted by a tubular neck, the brown skin skillfully used to accent the carving of a prunus tree growing from a rock, the shoulders carved with peach-form 'handles', the translucent stone a pale yellow color with cloudy inclusions.

2 1/2in (6.3cm) high

US\$6,000 - 9,000

1750-1800年 黃玉巧雕梅紋鼻煙壺

Provenance

Acquired in Florida



9049

9049

A WHITE JADE PEBBLE-FORM SNUFF BOTTLE

1750-1850

Well-hollowed and conforming to the natural shape of the pebble, the stone a creamy white with cloudy inclusions enhanced with the russet skin.

2 3/4in (7cm) long

US\$2,500 - 4,000

1750-1850年 白玉卵石形鼻煙壺

Provenance

Asian Art Studio, 2010

A private New Zealand Collection



9050

9050
**TWO IRON-RED 'BUDDHIST LION' PORCELAIN
 SNUFF BOTTLES**

19th century
 The first of compressed upright form with a rounded lip and high, unglazed foot rim, the body painted with two lions; the second of cylindrical form, the body with a lion and pup, the foot marked *Tongzhi* in iron-red.
2 7/8in (7.3cm) height of taller

US\$1,200 - 1,500

十九世紀 礬紅獅子紋鼻煙壺兩件

Provenance

The compressed bottle: Eldred's Auctions, Massachusetts, 1998
 The cylindrical bottle: acquired in Paris, 1973



9051

9051
**TWO UNDERGLAZE BLUE AND IRON-RED PORCELAIN
 SNUFF BOTTLES**

19th century
 Both of cylindrical form, the first featuring a broad everted lip and unglazed foot rim, decorated with a boy and a dragon on a ground of stylized *fu* and *shou* characters, the six-character Guangxu mark in underglaze blue, and of the period; the second bottle with a wide mouth and a thin rounded lip, the foot rim unglazed, with yellow enamel at the shoulder and foot, the body with a pattern in underglaze blue punctuated by a series of lotus flowers.
3 1/8in (8cm) height of taller

US\$1,500 - 2,500

十九世紀 青花礬紅鼻煙壺兩件

Provenance

The dragon bottle: Eldred's Auction, Massachusetts, 2002
 The lotus bottle: acquired in Florida, 1992



9052

9052
**TWO IRON-RED AND GREEN ENAMELED PORCELAIN
 SNUFF BOTTLES**

19th Century
 Nearly identical, each of tapering cylindrical form, with softly rounded lip, the circular foot rim unglazed, decorated with an iron-red dragon and famille-verte enameled dragon chasing a flaming pearl, the pearls highlighted with gilding.
2 1/4in (5.7cm) high

US\$1,000 - 2,000

十九世紀 礬紅綠彩龍紋鼻煙壺兩件

Provenance

Purchased Washington D.C., 1998



9053 (two views)

9053

A BLUE OVERLAY WHITE GLASS SNUFF BOTTLE

1750-1850

Of flattened globular form, the translucent blue layer carved to depict bamboo, orchids, pine and plum, representing the *si junzi* (Four Gentlemen), all growing from a rocky ground above the oval foot ring.

2 1/2in (6.5cm) high

US\$2,500 - 4,000

1750-1850年 涅白地套藍料四君子紋鼻煙壺

Provenance

Vanessa Holden, December, 1998

9054

A RED OVERLAY SNOWFLAKE GLASS 'LANDSCAPE' SNUFF BOTTLE

1750-1820

Of compressed form, with a flat lip and flat oval foot rim, the red overlay carved with figures in a fantastic landscape with dramatic waterfalls, twisted pines, and rocky outcroppings.

2 3/8in (6cm) high

US\$3,000 - 5,000

1750-1820年 雪霏地套紅料仙境圖鼻煙壺

Provenance

Robert Kleiner, 1997



9054



9055

9055

TWO INSIDE PAINTED SNUFF BOTTLES

Late 19th/early 20th century

The first an agate bottle, each side painted with an episode from the 'Strange Tales of Liaozhai', identified by an inscription, one side dated *xinyou* (1921) and signed *Ye Zhongsan*; the second a rock crystal bottle, one side painted with boys in a dragon boat, the other with two horses by a river, inscribed with a dedicatory inscription, dated *xinmao* (1891), signed *Zhou Leyuan*.

2 1/2in (6.3cm) height of taller

US\$3,000 - 5,000

十九世紀末/二十世紀初 畫鼻煙壺兩件

Provenance

The agate bottle: Eldred's Auction, Massachusetts, 1991



9055 (two views)

9056

AN AMBER SNUFF BOTTLE

1750-1820

Of flattened square form with rounded corners, supported on an oval foot ring, unadorned except for mock lion mask and ring handles neatly carved on the shoulders, the deep orange material finely crizzled on the interior.

2in (5cm) high

US\$2,000 - 3,000

1750-1820年 琥珀雕鋪首耳鼻煙壺

Provenance

Eldred's Auction, Massachusetts, 1999



9056

9057

A CORAL SNUFF BOTTLE

1800-1880

Of flattened ovoid form, finely carved with a recumbent ox beneath the sun surrounded by rising vapors on one side and a horse grasping a flag with a *taiji* symbol on the other, all supported on a broad oval foot ring.

1 7/8in (4.7cm) high

US\$4,000 - 6,000

1800-1880年 珊瑚雕牛馬紋鼻煙壺

Provenance

Acquired in Cleveland, 1972



9057

9058

AN AMBER SNUFF BOTTLE

1750-1850

Of rounded rectangular outline, supported on an oval foot ring, the short sides neatly carved with mock lion mask and ring handles, the opaque material of a rich honey color.

2 1/2in (6.3cm) high

US\$2,000 - 3,000

1750-1850年 琥珀雕鋪首耳鼻煙壺

Provenance

Peter and Marion Bozzo Collection, 2004



9058



9059

9059

AN AGATE 'LIU HAI' SNUFF BOTTLE

1750-1860

Very well-hollowed, of rounded square outline, one side utilizing the deep orange inclusion to highlight the low relief carving of the God of Wealth Liu Hai holding his string of cash, balancing on the back of his three-legged toad, the thin walls a caramel color.

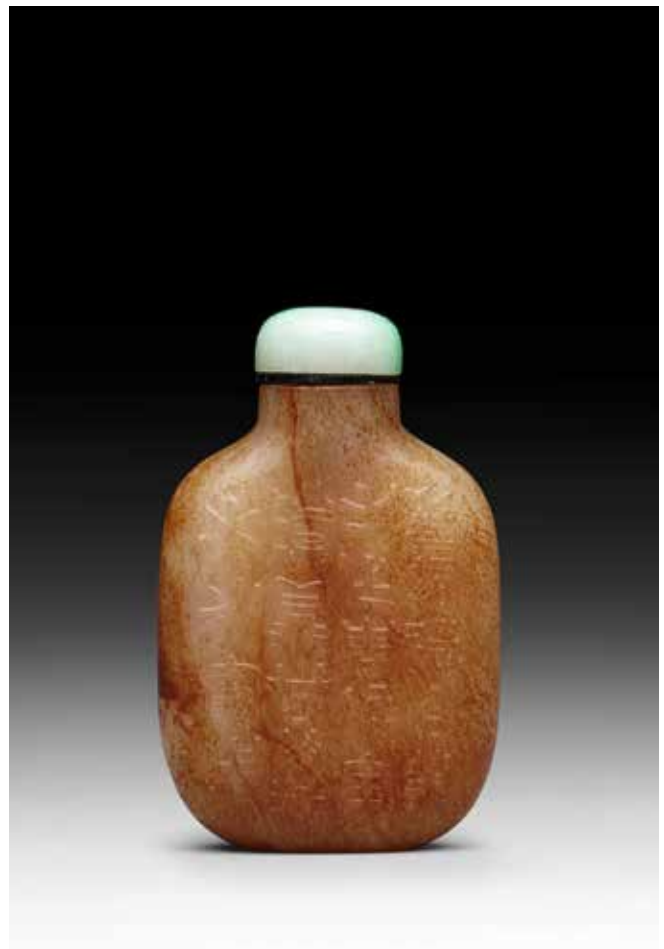
2 1/4in (5.8cm) high

US\$2,500 - 4,000

1750-1860年 瑪瑙巧雕劉海紋鼻煙壺

Provenance

Acquired in London, 1977



9060

9060

A RUSSET-STAINED JADE 'ANCIENT BRONZE' SNUFF BOTTLE

1750-1850

Of rounded rectangular outline with a concave foot, one side carved in low relief with a depiction of an ancient bronze tripod vessel, the other side carved in raised relief with an archaistic inscription, the surface stained to resemble excavated jade.

2 1/2in (6.3cm) high

US\$2,500 - 4,000

1750-1850年 青玉加彩雕仿古紋鼻煙壺

Provenance

Acquired in New York, 1998



9061

9061

A STAINED YELLOW JADE 'DRAGON' SNUFF BOTTLE

1750-1850

Of flattened rounded form, carved with a dragon amid clouds on one side and a dragon-fish amid waves gazing at a pavilion in the clouds on the other, the translucent yellow stone stained and with cloudy white and brown inclusions.

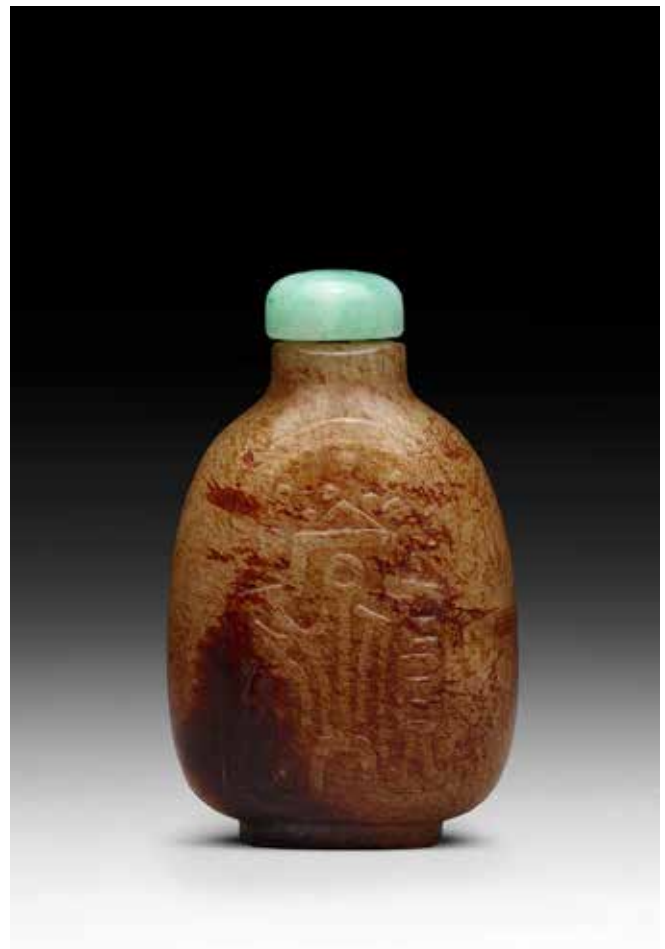
2 1/2in (6.3cm) high

US\$4,000 - 6,000

1750-1850年 黃玉加彩鯉魚跳龍門圖鼻煙壺

Provenance

Peter and Marion Bozzo Collection, 2002



9062

9062

A RUSSET-STAINED JADE 'ANCIENT COINS' SNUFF BOTTLE

1750-1850

Of flattened ovoid form, surmounted by a short tubular neck and supported on an oval foot ring with a concave foot, each side carved in low relief with a depiction of two ancient coins, the surface stained to simulate the look of excavated jade.

2 5/8in (6.8cm) high

US\$4,000 - 6,000

1750-1850年 青玉加彩雕古幣紋鼻煙壺

Provenance

Sotheby Parke Bernet, 1984



9063



9064

9063

TWO GLASS SNUFF BOTTLES

1750-1850

Both of flattened rounded shape, the first of turquoise glass, unadorned except for mock lion mask and ring handles carved on the shoulders; the second of black overlay white glass, the overlay carved as a dragon on one side and a tiger and bat on the other, the short sides carved with figures of immortals.

2 3/8in (5.7cm) high

US\$2,000 - 3,000

1750-1850年 料胎鼻煙壺兩件

Provenance

Turquoise bottle: Asiantiques, Florida, 2008

Black overlay bottle: Private Cincinnati Collection, 2014

9064

A BLACK OVERLAY WHITE GLASS SNUFF BOTTLE

1750-1850

Of flattened globular form, the opaque black layer carved to form a design of two magpies perched in the branches of flowering plum trees, and carved with a large open plum blossom forming the foot.

2 3/8in (5.7cm) high

US\$2,000 - 3,000

1750-1850年 白地套黑料喜鵲登梅紋鼻煙壺

Provenance

Wang Ning, October, 2007

9065

**A BLUE OVERLAY SNOWFLAKE GLASS
SNUFF BOTTLE**

1750-1800

Of compressed globular form with a straight neck, supported on an oval foot rim, the sapphire blue overlay carved to the bubble suffused ground on one side with a prunus and rock, reversed by a peony and rock, fixed ring mask handles on the narrow sides. *1 7/8in (4.7cm) high*

US\$3,000 - 5,000

1750-1800年 雪霏地套藍料梅花牡丹紋鼻煙壺

Provenance

Clare Lawrence Ltd.
Sotheby's New York, 17 March 1997, lot 47
The Dodge Collection
Arthur Loveless Collection, 1961



9065 (two views)

9066

TWO GLASS SNUFF BOTTLES

19th century

The first of flattened ovoid form, with a raised oval foot rim, the black glass overlay carved on each side with bird and flowering tree; the second of compressed form with a cobalt blue overlay on a bubble suffused ground, the overlay carved as nine archaic bronze vessels. *2 1/4in (5.7cm) height of taller*

US\$1,500 - 2,500

十九世紀 料胎鼻煙壺兩件

Provenance

The black overlay bottle: Eldreds Auctions,
Massachusetts, 2008
The blue overlay bottle: Vanessa Holden, 1999



9066



9067



9068

9067

THREE UNDERGLAZE-DECORATED PORCELAIN SNUFF BOTTLES

19th Century

All of cylindrical form gently flaring towards the base, the first finely painted in copper-red with a scene of a scholar gazing at the moon, the base with a four-character Chenghua mark in underglaze blue; the next two painted in blue and copper-red, one with a scene of two fisherman in a boat at night, inscribed with a line of verse alluding to the scene, the base inscribed *chun jiang bai du* (boat riding on a Spring river); the other painted with fish among water weeds, the design repeated on the base.

3in (7.5cm) high

US\$1,200 - 1,500

十九世紀 釉裏紅及青花釉裏紅鼻煙壺三件

Provenance

The copper-red bottle acquired in Paris, 1973

9068

A BLUE AND WHITE PORCELAIN 'LOTUS' SNUFF BOTTLE

Mid 19th Century

Of hexagonal *meiping* form, the lip rounded and the foot rim unglazed, the soft paste body adorned with a pattern of scrolling lotus, bearing a four character *Yongzheng nianzhi* mark in underglaze blue.

3 1/8in (8cm) high

US\$1,000 - 2,000

十九世紀中期 青花纏枝蓮紋鼻煙壺

Provenance

John Ford Associates, 1976



9069

9069

AN ENAMELED YIXING SNUFF BOTTLE

1840-1880

Of flattened moon flask shape, the lip flat, with an oval foot rim, the raised panels with landscapes in blue enamel, the foot with a splash of white glaze.

2 3/8in (6cm) high

US\$5,000 - 7,000

1840-1880年 宜興紫砂加彩山水圖鼻煙壺

Provenance

Eldred's Auction, Massachusetts, 1986



9070

9070

A LAPIS LAZULI SNUFF BOTTLE

1750-1800

Of compressed pear form, the lip flat and thin, with a rounded oval foot rim, each principle side carved in low relief with two *chilong*, the deep blue stone offset with light blue, white and pyrite inclusions.

2 3/8in (6cm) high

US\$4,000 - 6,000

1750-1800年 青金石雕螭龍紋鼻煙壺

Provenance

John Ford Associates, 1979



9071



9072

9071

TWO AGATE SNUFF BOTTLES

1750-1900

The first of flattened globular form, carved in shallow relief with leaping carp, the fish highlighted by the inclusions in the stone; the second of ovoid shape carved with mandarin ducks in a pond, the caramel inclusions accenting the design.

2 1/4in (6cm) height of taller

US\$1,500 - 2,500

1750-1900年 瑪瑙鼻煙壺兩件

Provenance

The mandarin ducks bottle; acquired in 1973

9072

AN AGATE 'TIGER AND BAT' SNUFF BOTTLE

1750-1860

Of rounded square outline and well-hollowed, one side carved with a tiger grabbing one bat by the wing, while another bat hovers close by, the amber markings in the stone used to accent the design and the dark brown inclusions ingeniously used to depict the tiger's markings.

2 1/8in (5.5cm) high

US\$2,000 - 3,000

1758-1860年 瑪瑙雕虎蝠紋鼻煙壺

Provenance

Asian Art Studio

Ed and Roberta Wise Collection, California

9073

AN AGATE 'BANNERMAN' SNUFF BOTTLE

1750-1860

Of compressed form, the interior very well hollowed, the oval foot slightly recessed, one side carved in relief with the russet inclusions as a Manchu bannerman seated astride a galloping horse.

2 1/8in (5.4cm) high

US\$2,000 - 3,000

1750-1860年 瑪瑙巧雕旗人騎馬紋鼻煙壺

Provenance

Robert Hall, 1987

Illustrated

Viviane Jutheau, *Guide du Collectionneur de Tabatières Chinoises*, Paris, 1980, pp 103-104

Exhibited

Taft Museum of Art, Cincinnati, Ohio, February to April 1997



9073

9074

AN AGATE 'HORSE' SNUFF BOTTLE

1750-1860

Of compressed form, the interior very well hollowed, the lip slightly concave, the bottle supported by a broad oval foot rim, with one side carved in high relief as a caparisoned horse tethered to a post, the stone with attractive caramel inclusions.

2 1/2in (6.3cm) high

US\$2,000 - 3,000

1750-1860年 瑪瑙巧雕馬紋鼻煙壺

Provenance

Purchased Washington D.C., 1975



9074

9075

AN AGATE SNUFF BOTTLE

1750-1860

Of compressed upright form, with a flat lip and a wide oval foot rim, one side with a silhouette of blue-green inclusions evoking a bird and a tree.

2 1/4in (5.7cm) high

US\$1,500 - 2,000

1750-1860年 瑪瑙巧雕鳥樹紋鼻煙壺

Provenance

Hartman Rare Art, 1973



9075



9076

9076

TWO GLASS SNUFF BOTTLES

1750-1850

The first of compressed form, the pale blue overlay carved as *chilong*, *shou* medallions and bats, with an oval foot rim; the second of upright rectangular form with a flat lip and a flat oval foot rim, fixed ring mask handles to the sides, the two main panels slightly concave to act as an integral snuff dish, the glass an even blue tone with sparse bubbles. 2 5/8in (6.7cm) high

US\$1,000 - 2,000

1750-1850年 料胎鼻煙壺兩件

Provenance

The overlay bottle: purchased 1967

The transparent blue bottle: Asiantiques, 2007

9077

A YELLOW GLASS SNUFF BOTTLE

1750-1820 Probably imperial, attributed to the Palace workshops Of compressed pear form, with a flat lip and a rounded oval foot ring, the narrow sides with fixed ring handles, the opaque material with visible striations on one side. 2 1/4in (5.7cm) high

US\$2,000 - 3,000

1750-1820年 黃料鋪首耳鼻煙壺

Provenance

Asian Art Studio



9077



9078 (two views)

9078

A THREE-COLOR OVERLAY TRANSPARENT GLASS SNUFF BOTTLE

1780-1850

Of compressed pear form, the lip flat, the circular foot rim in blue overlay, with principal sides in two shades of yellow and transparent blue overlay carved as peaches and finger citrons, with admiring bats an added auspicious symbol.

2 7/8in (7.3cm) high

US\$2,000 - 3,000

1780-1850年 透明地套黃藍色料福壽紋鼻煙壺

Provenance

Asian Art Studio, 2003

The Crane Collection

Marian Mayer

9079

A BLUE OVERLAY TRANSPARENT GLASS SNUFF BOTTLE

1750-1850

Of flattened rounded rectangular form, the transparent blue layer carved to form the design of water weeds and six goldfish leaping over churning waves that surround the recessed foot.

2 5/8in (6.8cm) high

US\$2,000 - 3,000

1750-1850年 透明地套藍料金玉滿堂鼻煙壺

Provenance

Acquired in New York, 1982



9079



9080

9080

**THREE BLUE AND WHITE PORCELAIN
'DRAGON' SNUFF BOTTLES**

19th century

The first of upright rectangular form, with flat lip and oval foot rim, painted with a dragon amid in clouds; the second of cylindrical form with an everted lip and an unglazed circular foot rim, the body with a dragon chasing a pearl against a *wanzi* ground, with a Kangxi mark to the foot; the third of *meiping* form, the circular foot rim unglazed, the body with a dragon against a floral ground with a Yongzheng mark to the foot.

3in (7.5cm) height of tallest

US\$1,200 - 1,500

十九世紀 青花龍紋鼻煙壺三件

Provenance

The cylindrical bottle: Robert Kleiner at the Los Angeles ICSBS convention, 2003



9081

9081

**THREE BLUE AND WHITE PORCELAIN
SNUFF BOTTLES**

19th century

The first of hexagonal section, each face painted with three stylized *shou* characters; the second of quatrelobed section, also decorated with stylized *shou* characters; the third of cylindrical shape, inscribed with a portion of Qianlong's poem in praise of his favorite tea, the base inscribed *guanyao jingzhi* (exquisitely produced by the imperial kilns).

3in (7.5cm) height of tallest

US\$1,200 - 1,500

十九世紀 青花鼻煙壺三件

Provenance

The hexagonal bottle: acquired in Paris, 1972

9082

**THREE BLUE AND WHITE PORCELAIN
'DRAGON' SNUFF BOTTLES**

19th century

The first bottle of tapering cylindrical form with a dragon amid clouds chasing a flaming pearl, the foot with a *six character Qianlong* mark in underglaze blue; the second bottle of *meiping* form, with a wide mouth and unglazed foot and foot rim, the body adorned with a dragon; the third bottle of compressed pear form, each side with a front-facing dragon.

2 3/4in (7cm) height of tallest

US\$1,200 - 1,500

十九世紀 青花龍紋鼻煙壺三件

Provenance

The tapering cylindrical bottle: Eugene Sung
1967



9082

9083

**THREE BLUE AND WHITE PORCELAIN
SNUFF BOTTLES**

19th century

The first of tapered cylindrical form, supported by an unglazed foot rim, the body painted with a fisherman in a landscape, the foot bearing a *Yongzheng nianzhi* mark; the second of *meiping* form with a circular, unglazed foot rim, the body painted with a continuous landscape; the third of cylindrical form, the foot marked with a lotus, and the body painted with a scene of a military official dreaming in his tent.

2 3/4in (7cm) height of tallest

US\$1,200 - 1,500

十九世紀 青花鼻煙壺三件



9083



9084

9084

A WHITE JADE 'HORSES' SNUFF BOTTLE

1750-1850

Of flattened ovoid form, carved in low relief on one side with a caparisoned horse, the other side with a horse tethered to a pine tree, the decoration possibly inspired by Zhao Mengfu's horse paintings, the translucent stone with some cloudy inclusions.

2 1/2in (6.3cm) high

US\$3,000 - 5,000

1750-1850年 白玉雕馬圖鼻煙壺

Provenance

Frank Caro, 1968



9085

9085

A WHITE JADE SNUFF BOTTLE

1750-1820

Well-hollowed of slightly flattened globular form, surmounted by a tubular neck and supported on a concave foot, the translucent stone of an even color with some opaque white inclusions.

2in (5cm) high

US\$2,500 - 4,000

1750-1820年 白玉光素鼻煙壺

Provenance

Wang Ning, 2008

9086

A YELLOW AND RUSSET JADE 'RED CLIFF' SNUFF BOTTLE

Master of the Rocks School, 1780-1850

Of rounded square outline, the russet skin deeply carved to create the scene of poet Su Shi, Huang Tingjian and Fayin the monk on a boat borne on churning waves, framed by the Red Cliff crowned by a pavilion in the background and ancient pine tree and clouds.

2 1/2in (6.3cm) high

A hallmark of the 'Master of the Rocks' School, is its superb and distinctive use of the skin on yellow jade, a material much favored by the School. The decorative carving is almost always confined to the russet skin with the yellow jade left unadorned to better display the beauty of its color.

US\$8,000 - 10,000

1780-1850年 留皮玉雕派 青黃玉留皮巧雕赤壁圖鼻煙壺

Provenance

Acquired in Washington, D.C., 2000





9087

9087

A ROOT AMBER SNUFF BOTTLE

1800-1900

Of slightly flattened baluster form, supported on an oval foot ring, carved in relief with an overall design of birds in flowering branches. *2 5/8in (6.8cm) high*

US\$1,500 - 2,500

1800-1900年 琥珀雕花鳥紋鼻煙壺



9088

9088

A STRIATED AGATE SNUFF BOTTLE

1750-1860

The well-hollowed flatted globular body displaying concentric white and honey-colored striations, all supported on an oval foot ring. *2 1/8in (5.5cm) high*

US\$1,500 - 2,500

1750-1860年 瑪瑙天然紋鼻煙壺

Provenance

Hotel Drouot, Paris, 1985



9089

9089

A STRIATED THUMBPRINT AGATE SNUFF BOTTLE

1750-1860

Of flattened rounded form, with a tubular neck and oval foot ring, the surface unadorned to display the beige, white and gray striations in the stone.

2 1/4in (5.8cm) high

US\$2,000 - 3,000

1750-1860年 瑪瑙自然紋鼻煙壺

Provenance

Dorothea Esty



9090

9090

AN AGATE SNUFF BOTTLE

1750-1860

Of compressed upright form, tapering to the foot, the interior very well hollowed, the lip concave, one face subtly carved so the chocolate brown inclusions appear as a cat and butterfly.

2 1/2in (6.3cm) high

US\$3,000 - 5,000

1750-1860年 瑪瑙巧雕毫臺紋鼻煙壺

Provenance

Christie's London, 12 October 1987, lot 332
Count Kurt Graf Blucher von Wahlstatt

Illustrated

Hugh Moss, *Snuff Bottles of China*, p. 81, no 75



9091



9092



9093

9091

A RUBY-RED FACETED GLASS SNUFF BOTTLE

1730-1820 Probably imperial, attributed to the Palace workshops
Of octagonal outline with a flat hexagonal foot, carved with facets
on all sides, surmounted by a cylindrical neck.
2 3/8in (5.7cm) high

US\$1,500 - 2,500

1730-1820年 透明紅料八方鼻煙壺

Provenance

Peter and Marion Bozzo Collection, 1991

9092

A YELLOW GLASS SNUFF BOTTLE

1740-1800 Imperial, attributed to the Palace workshops
Of flattened, attenuated ovoid form supported on a flat foot, the sloping
shoulders gently rising to a short cylindrical neck with a wide mouth, the
material of an opaque lemon yellow color.
2 1/4in (6cm) long

US\$2,500 - 4,000

1740-1800年 明黃料光素鼻煙壺

Provenance

Jade House, Hong Kong, 1979

9093

AN AMBER SNUFF BOTTLE

1750-1850

Carved as a cluster of three fruit growing from a leafy vine, the calyx
forming the foot of the bottle, the deep amber material with light crizzling.
1 3/4in (4.5cm) high

US\$1,500 - 2,000

1750-1850年 琥珀雕瓜果式鼻煙壺

Provenance

Hartman Rare Art, 1994



9094

9094

AN AMBER 'PRUNUS' SNUFF BOTTLE

1780-1850

Well-hollowed, of flattened rounded form, carved in low relief, one side with a gnarled prunus growing from a rock with a butterfly fluttering by, the other side with a cluster of four insects highlighted by inclusions in the rich dark honey colored material.

2 3/4in (7cm) high

US\$2,000 - 3,000

1780-1850年 琥珀雕枯梅昆蟲紋鼻煙壺

Provenance

Acquired in 1968



9095

9095

A YELLOW GLASS 'ELEPHANT' SNUFF BOTTLE

1750-1850 Probably imperial, attributed to the Palace workshops

Carved in the form of a stylized caparisoned elephant with head turned back, supporting on its back a vase that forms the neck of the bottle, the feet of the elephant forming the foot, the details finely incised.

2 5/8in (6.8cm) high

US\$3,000 - 5,000

1750-1850年 黃料雕太平景象紋鼻煙壺

Provenance

Acquired in 1991

A larger bottle of similar material and design is illustrated in Hugh Moss, Victor Graham and Ka Bo Tsang, *A Treasury of Chinese Snuff Bottles: The Mary and George Bloch Collection*, vol. 5, part 2, Hong Kong, 2002, no. 856.



9096



9097

9096

THREE PORCELAIN 'FLORAL SCROLL' SNUFF BOTTLES

19th Century

Two of tapering ovoid form, the decoration on the first incised beneath the white glaze with an overall repeated pattern of lotus blossoms borne on foliate scrolls; the second with similar decoration, but in underglaze blue, the base with four-character Yongzheng seal mark; the third of cylindrical form, the decoration in underglaze black with peony blossoms borne on meandering stems.

3in (7.5cm) height of tallest

US\$1,200 - 1,500

十九世紀 瓷胎纏枝花紋鼻煙壺三件

9097

A BLUE AND WHITE PORCELAIN SNUFF BOTTLE

Daoguang mark and of the period

Of hexagonal form, with a flat everted lip and unglazed circular foot rim, the narrow sides decorated with scrolling vines spreading to the foot and across the shoulder, the wide facades with boys at play, the foot with a six character mark in underglaze blue.

2 1/4in (5.7cm) high

US\$2,000 - 3,000

清道光 青花戲嬰圖鼻煙壺 《大清道光年製》款

9098

**THREE PORCELAIN 'DRAGON'
SNUFF BOTTLES**

19th century

All of cylindrical form, the first with the foot unglazed with concentric circles, the lip gilt, the body with an underglaze blue dragon accented by gilt, with green enamel waves at the foot and iron-red clouds; the second with an unglazed foot rim, the body with an underglaze blue dragon amid clouds, bearing a *Da Qing Qianlong nianzhi* mark; the third slightly tapered with a green enamel dragon on the body, the foot bearing a *Kangxi nianzhi* mark.

3 1/8in (8cm) height of tallest

US\$1,200 - 1,500

十九世紀 瓷胎龍紋鼻煙壺三件

Provenance

The underglaze blue and iron-red bottle:

Vanessa Holden, 1999

The green enamel bottle: Eldred's Auction, 1997



9098

9099

**THREE BLUE AND WHITE PORCELAIN
SNUFF BOTTLES**

19th century

The first bottle of baluster form, supported by a high, unglazed foot rim, the body with boys in individual cells, bearing a *Da Qing Yongzheng nianzhi* mark on the foot; the second bottle of baluster form, tapering at the foot, the body with stylized medallions, bearing a *Da Qing Qianlong nianzhi* mark on the foot; the third bottle of cylindrical form, the body with scrolling lotus, the foot marked *Yongzheng nianzhi*.

3 1/4in (8.2cm) height of tallest

US\$1,200 - 1,500

十九世紀 青花鼻煙壺三件



9099



9100

9100

AN AMBER OVERLAY SNOWFLAKE GLASS SNUFF BOTTLE

1780-1850

Of flattened ovoid form, the transparent amber layer carved to form the oval foot ring and the auspicious motifs of a bat and peach on one side, and a bat and pomegranate on the other, the transparent ground suffused with bubbles.

2 1/2in (6.3cm) high

US\$1,200 - 1,500

1780-1850年 雪霏地套香色料三多紋鼻煙壺

Provenance

Acquired in 1976

The motifs on this bottle represent the 'The Abundances'. The bats symbolize an abundance of blessings, the peach an abundance of longevity, and the pomegranate an abundance of offspring.



9101

9101

A FOSSILIFEROUS LIMESTONE SNUFF BOTTLE

19th Century

Well-hollowed, with a flat lip and a concave foot, the matrix containing a natural cellular pattern throughout of cream and caramel hues.

2in (5cm) high

US\$1,000 - 2,000

十九世紀 石化石灰石鼻煙壺

Provenance

Eldred's Auction, Massachusetts, April 2010



9102

9102

AN ARAGONITE SNUFF BOTTLE

1750-1860

Of compressed pear form, the neck waisted, mock mask and ring handles on the narrow sides, supported by an oval foot rim, the stone with white banding.

2 1/2in (6.3cm) high

US\$1,000 - 2,000

1750-1860年 文石雕鋪首耳鼻煙壺

Provenance

Asian Art Studio, 2013

Peter and Marion Bozzo Collection



9103

9103

AN AMBER 'KUILONG' SNUFF BOTTLE

1750-1850 Possibly imperial

Of flattened rectangular form with sloping shoulders, each face carved in low relief with a pair of confronting archaic *kuilong*, the sides carved with attenuated mock lion mask and ring handles.

2 1/2in (6.3cm) high

US\$2,500 - 4,000

1750-1850年 琥珀雕夔龍紋鼻煙壺

Provenance

Acquired in New York, 1982



9104

9104

A TOURMALINE SNUFF BOTTLE

1800-1900

The pink stone carved as a group of peaches, with the green toned portion figured as a bat, one side nearly flat.

2 1/8in (5.5cm) high

US\$2,000 - 3,000

1800-1900年 碧璽雕壽桃式鼻煙壺



9105



9106



9107

9105

A JADEITE SNUFF BOTTLE

1780-1850

Of flattened ovoid form, with a tubular neck and flat foot, the lustrous dark green stone with veins of emerald green.

2in (5cm) high

US\$2,500 - 4,000

1780-1850年 翠玉光素鼻煙壺

Provenance

Acquired in New York, 1970

9106

A BLACK AND WHITE JADE SNUFF BOTTLE

1750-1850

Of elegant pear shape, supported on an oval foot, the white stone with areas of dense black speckling, resembling a mountainous landscape enveloped by clouds.

2 3/4in (7cm) high

US\$1,800 - 2,500

1750-1850年 黑白玉鼻煙壺



9108 (two views)

9107

A JADEITE SNUFF BOTTLE

1800-1850

Of flattened ovoid form with a cylindrical neck and flat foot, the white stone liberally infused with emerald green plumes and some brown inclusions.

2in (5cm) high

US\$1,800 - 2,500

1800-1850年 翠玉光素鼻煙壺

Provenance

Eldred's Auction, Massachusetts, 1995

9108

A YELLOW AND RUSSET JADE 'DRAGON' SNUFF BOTTLE

Master of the Rocks School, 1780-1850

Of rounded rectangular shape with an oval foot ring and short tubular neck, the stone of a yellowish-green color with large patches of russet skin, finely carved to form a dragon amid clouds on one side, and used to accent the mock lion mask and ring handles on the shoulders, the other side carved with a branch of blossoming prunus.

2 1/2in (6.3cm) high

US\$6,000 - 8,000

1780-1850年 留皮玉雕派 青黃玉留皮巧雕雲龍紋鼻煙壺

Provenance

John Ford Associates, 1976



9109

9109

A RED OVERLAY TRANSPARENT GLASS 'CHILONG' SNUFF BOTTLE

1750-1800

Of flattened globular form, the ruby-red overlay carved to form a coiled *chilong* on each side and with an oval foot ring, the transparent bottle suffused with bubbles.

2 1/8in (5.5cm) high

US\$2,000 - 3,000

1750-1800年 透明地套紅料螭龍紋鼻煙壺

Provenance

Sotheby's, New York, 23 March 2004, lot 15

Robert and Molly Hsieh Collection

Robert Kleiner

Sotheby's, Sussex, 25 June 1991, lot 45



9110

9110

A RED OVERLAY SNOWFLAKE GLASS SNUFF BOTTLE

1750-1800

Of compressed form, with a flat lip and convex foot, the bubble suffused ground with a ruby red glass overlay forming the foot rim and a *chilong* and *bi* disc design on each of the main sides.

2 3/8in (6cm) high

US\$2,000 - 3,000

1750-1800年 雪霏地套紅料螭龍璧紋鼻煙壺

Provenance

Purchased Washington D.C., 2000



9111

9111

A RED OVERLAY SNOWFLAKE GLASS SNUFF BOTTLE

1750-1820

Of pear shape, the lip flat and flaring from the neck, the oval foot rim around a convex foot, with a ruby red overlay carved as confronting dragons on each principle side, and fixed ring mask handles on the narrow sides.

2 3/4in (7cm) high

US\$2,500 - 4,000

1750-1820年 雪霏地套紅料雙龍紋鼻煙壺

Provenance

Shakris Asian Works of Art, San Francisco, 1998

9112

**A GREEN AND PINK DOUBLE-OVERLAY
WHITE GLASS SNUFF BOTTLE**

1800-1850

Of flattened rounded form, overlaid with green on pink, the overlay carved to form a design of magpies in a blossoming plum tree and with an oval foot, the green layer carefully carved to give depth to the design.

2 1/2in (6.3cm) high

US\$3,000 - 5,000

1800-1850年 白地套綠粉料喜鵲登梅紋鼻煙壺

Provenance

Jin Hing Co., Los Angeles, 1987



9112 (two views)

9113

**TWO GREEN OVERLAY WHITE GLASS
SNUFF BOTTLES**

1750-1900

The green layer on the first carved to form the foot ring, the remaining surfaces of the opaque white bottle unadorned; on the second the green overlay carved on each side to form two sinuous *chilong* confronting each other, as well as the foot ring.

2 1/4in (5.8cm) high

US\$1,500 - 2,000

1750-1900年 白地套綠料鼻煙壺兩件

Provenance

The unadorned bottle: Sotheby Parke-Bernet, 25 February 1982

The *chilong* bottle: acquired 2009



9113



9114 (two views)



9115

9114

A WHITE JADE 'AUSPICIOUS' SNUFF BOTTLE

1750-1850

Of flattened ovoid form, carved in low relief with auspicious imagery, one side with a boy holding a chime as a bat flies overhead, all enclosed within a pomegranate shaped frame, the other side with a catfish and carp, the even white stone with a russet vein.

2 1/4in (2.6cm) high

US\$5,000 - 7,000

1750-1850年 白玉雕福慶有餘紋鼻煙壺

The decoration on this small bottle is filled with auspicious symbolism. The word for chime, *qing* is a homophone for 'celebration'; the bat represents blessings and the pomegranate-shaped frame symbolizes an abundance of offspring. The word for catfish, *nian* is a homophone for 'year' and forms a pun for the phrase *niannian youyu* (abundance year after year). The carp represents scholarly success.

9115

A JADEITE SNUFF BOTTLE

1780-1850

Of ovoid form with a cylindrical neck, supported on a recessed oval foot, the lustrous stone displaying streaks of bright green and hints of lavender.

2in (5cm) high

US\$2,500 - 4,000

1780-1850年 翠玉光素鼻煙壺

Provenance

Frank Caro, New York, 1968

9116

**AN EMBELLISHED CELADON JADE
SNUFF BOTTLE**

The bottle: 1780-1850, embellishment:
Tsuda family, Kyoto, Japan, 20th century
Of flattened ovoid shape, embellished on
one side with hardstones, gilt-lacquer and
pigments to form a scene of a blossoming
peony growing between a rock and tall
grasses with a butterfly fluttering above,
the other side inscribed in gilt lacquer with
a poetic verse, followed by a signature
Changren and one seal reading *Qianlong*.
2 1/8in (5.5cm) high

US\$4,000 - 6,000

壺：1780-1850年
裝飾：二十世紀 日本津田加裝 青玉百寶嵌富
貴花紋鼻煙壺 《昌仁》款

Provenance

Acquired in 1982



9116 (two views)

9117

**A PALE YELLOW AND RUSSET JADE
'FIVE SONS' SNUFF BOTTLE**

Master of the Rocks School, 1780-1850
Of rounded rectangular form with sloping
shoulders, the russet skin carved to
depict the five sons of Dou Yujun playing
musical instruments, the pale yellow stone
transitioning to dark brown beneath the skin.
2 1/4in (5.8cm) high

US\$3,000 - 5,000

1780-1850年 留皮玉雕派 青黃玉留皮巧雕五
子紋鼻煙壺

Provenance

Neal and Francis Hunter Collection



9117 (two views)



9118



9119



9120

9118

A BLUE AND WHITE PORCELAIN 'LION' SNUFF BOTTLE

19th century

Of compressed pear form, with a flat lip and unglazed oval foot rim, the body densely painted with eight Buddhist lions and a single brocade ball amid clouds, a ninth lion on the foot.

2 3/8in (6cm) high

US\$1,000 - 2,000

十九世紀 青花九獅紋鼻煙壺

9119

A BLUE AND WHITE PORCELAIN SNUFF BOTTLE

19th century

Of squat jarlet form, with a wide mouth and a flaring lip, the circular foot rim unglazed, the body decorated with a battle scene occurring on a turbulent sea, the foot with a lotus in underglaze blue.

1 3/4in (4.4cm) high

US\$1,000 - 2,000

十九世紀 青花神話故事圖鼻煙壺

9120

A BLUE AND WHITE PORCELAIN SNUFF BOTTLE

19th Century

Of cylindrical form with a broad everted lip, the foot a series of unglazed concentric circles with a dot of cobalt and glaze on the innermost point, the body with a deftly painted coiling dragon in underglaze blue, the clear glaze with an attractive crackle.

2 3/4in (7cm) high

US\$1,000 - 2,000

十九世紀 青花龍紋鼻煙壺



9121

9121

TWO ENAMELED PORCELAIN SNUFF BOTTLES

Daoguang marks, 19th century

The first of cylindrical form, with a circular unglazed foot rim, traces of gilt to the lip, the body with famille-rose enamels depicting figures in a continuous landscape, an iron-red four-character mark to the foot, late 19th century; the second of compressed form, each side with a cricket in famille-verte enamels, the wide foot rim unglazed, with an iron-red four character mark on the foot, and of the period.

3 1/4in (8.2cm) height of taller

US\$4,000 - 6,000

十九世紀 瓷胎鼻煙壺兩件 《道光年製》款

Provenance

The landscape bottle: Eldred's Auctions, Massachusetts, 2000

The cricket bottle: purchased Private Cincinnati Collection, 2014

9122

A MOLDED PORCELAIN 'CRANE' SNUFF BOTTLE

Jing Wei Tang mark, 1820-1850

Of upright rectangular form, a rounded lip around a wide mouth, the oval foot rim unglazed, the body molded in high relief with a continuous scene of six cranes on a pine, with *lingzhi* emanating from a rock, a Jin Wei Tang mark in underglaze blue to the foot.

2 1/4in (5.7cm) high

US\$3,000 - 5,000

1820-1850年 黃地五彩模印松鶴長春紋鼻煙壺 《敬畏堂》款

Provenance

Hotel Drouot, Paris, 1995



9122



9123

9123

TWO BLACK ENAMEL GROUND PORCELAIN SNUFF BOTTLES

19th century

The first of flattened pear shape, with a thin lip and an oval foot rim surrounding a recessed foot, the body with figures in an exterior setting, an iron-red dragon marking the foot; the second of compressed ovoid form, with a gilt lip and unglazed oval foot rim, the body with a Buddhist lion reversed by a crane bearing a sword, an iron-red Qianlong mark on the foot.

3in (7.5cm) height of taller

US\$1,000 - 2,000

十九世紀 黑地鼻煙壺兩件

Provenance

The figural bottle: Eldred's Auction, Massachusetts, 1990

The lion and crane bottle: acquired 1993



9124

9124

TWO GREEN AND BLACK ENAMELED PORCELAIN SNUFF BOTTLES

19th century

The first of upright rectangular form, with a gilt lip, and a gilt rectangular foot rim, the body painted with a cracked-ice pattern, a four character Jiaqing mark in iron-red to the foot; the second of slender pear form painted to depict a continuous landscape, bearing a Qianlong mark on the concave foot.

2 1/2in (6.3cm) height of taller

US\$1,000 - 2,000

十九世紀 墨地綠彩鼻煙壺兩件



9125

9125

THREE SNUFF SAUCERS

Qing dynasty

The first a blue and white dish painted with figures of wayward youth and worthy elders, the subject indicated by the inscriptions, the base with a mark reading *wan yu*; the second of macaroni agate with a quadrilobed rim; the third of jadeite, the green stone with icy-white inclusions and bright green splashes.

1 7/8in (4.7cm) diameter of largest

US\$1,000 - 2,000

清 鼻煙碟三件

Provenance

The blue and white dish: a private San Francisco Collection, 1981

The jadeite dish: Eldred's Auction, Massachusetts, 2004

TYPICAL HEADINGS USED IN THE CATALOG

The following are examples of the terminology used in the catalog. While every reasonable effort has been made to ensure that the statements made in the catalog are correct, all statements and terms in this catalog are subject to the provisions of the Conditions of Sale and the Galleries and Consignors make no warranties or representations with respect to any lot.

AUTHORSHIP

WANG HUI

The piece is, in our opinion, a work of the artist.

ATTRIBUTED TO WANG HUI

The piece is, in our opinion, from the period of the artist and possibly by his hand.

SCHOOL OF WANG HUI

The piece is, in our opinion, in the style of the artist, possibly of a later period.

AFTER WANG HUI

The piece is, in our opinion, a copy done in the spirit of the artist.

“SIGNED”

The piece has a signature which, in our opinion, is that of the artist.

“BEARING THE SIGNATURE OF” OR “INSCRIBED”

The piece has a signature which, in our opinion, might be spurious or that of a later follower of the artist.

CERAMICS, PORCELAINS AND OTHER WORKS OF ART

FAMILLE VERTE OVOID VASE

KANGXI MARK AND PERIOD

When the piece is, in our opinion, a work of that period, reign or dynasty and marked as such, the date and mark appear in bold below the description.

FAMILLE VERTE OVOID VASE

KANGXI PERIOD

When the piece is, in our opinion, a work of that period, reign or dynasty, the date appears in bold below the description.

FAMILLE VERTE OVOID VASE

KANGXI MARK

When the piece, in our opinion, was manufactured during the 20th century or later, or when its date of manufacture is unclear, but bears a mark, the mark appears alone in bold below the description.

FAMILLE VERTE OVOID VASE

When the piece, in our opinion, was manufactured during the 20th century or later, or when its date of manufacture is unclear, no date appears below its bold description.

PHYSICAL CONDITION OF LOTS IN THIS AUCTION

PLEASE NOTE THAT THERE IS NO REFERENCE IN THIS CATALOG TO THE PHYSICAL CONDITION OF ANY LOT. INTENDING BIDDERS MUST SATISFY THEMSELVES AS TO THE CONDITION OF ANY LOTS AS SPECIFIED IN THE ‘LIMITATION OF LIABILITY’ IN THE ‘CONDITIONS OF SALE.’

As a courtesy to intending bidders, Bonhams will provide a written indication of the physical condition of lots in this sale if a request is received up to 24 hours before the auction starts. Such report is also available for download from Bonhams website.

REGULATED SPECIES MATERIALS AND CITES PERMITS

The export of a lot from the United States or import into certain countries may be subject to export or import regulations, licensure and/or other restrictions; in particular, lots containing plant or animal materials such as ivory, rhinoceros horn, tortoiseshell, coral, whalebone or certain types of woods, irrespective of age or value, may require the granting of one or more export or import licenses or certificates, or may be banned from import altogether by some countries. Moreover, the ability to obtain an export license or certificate does not insure the ability to obtain an import license or certificate in another country. Lots that contain such regulated species materials may also not be eligible for exportation or for re-importation into the United States if they are not at least 100 years of age, and, under current law, lots containing African Elephant Ivory may no longer be re-imported into the United States regardless of age. In addition, resales of lots containing certain regulated species materials may be subject to restrictions in some jurisdictions.

Lots noted in the catalog with a Y next to the lot number contain one or more such regulated plant or animal materials. It is the buyer's responsibility to investigate any such restrictions and to obtain any relevant export or import licenses, which may require independent expert verification of the species and/or age of the regulated material; such reports must be obtained by the purchaser at his or her own expense. Please note that this process is governed by local authorities and may take considerable time. Regardless of any delay in the obtaining of an export or import license or certificate or denial of a license's or certificate's issuance, purchased lots shall be paid for in accordance with the Conditions of Sale, and any such delay or denial shall not serve as the basis for cancellation of any sale. Prospective buyers are advised to obtain information from the relevant regulatory authorities regarding export and import restrictions, requirements, and costs prior to bidding.

Prospective buyers should also check with their local (e.g. state) regulatory authorities regarding any local restrictions and/or permit requirements that may apply with respect to purchases of regulated species materials, including without limitation purchases of items containing elephant ivory or rhino horn. For example, we are advised that New York buyers of any lot containing elephant or mammoth ivory or rhino horn will be responsible for obtaining a New York State permit before taking possession of the lot within New York State, and that the State of New Jersey has banned the import of items containing elephant or marine mammal ivory or rhino horn into that state.

Upon request, Bonhams can refer the purchaser to a third party agent to assist the purchaser in attempting to obtain the appropriate licenses and/or certificates. However, there is no assurance that any necessary licenses or certificates can be obtained. Please contact the Specialist Department for a suggested list of shipping agents prior to placing a bid if you are uncertain as to whether a lot is subject to export/import license or certificate requirements or related restrictions.

SNUFF BOTTLE DISCLAIMER

Unless otherwise specified in the cataloging of a lot, snuff bottle stoppers are not included in any snuff bottle lots or in the estimate or purchase price of such a lot sold hereunder, regardless of whether the snuff bottle lot is illustrated with one or more stoppers. While Bonhams makes reasonable efforts to ensure that a stopper illustrated or exhibited with a snuff bottle lot accompanies the lot upon collection or release, it accepts no liability for not doing so or for damage or for loss to stoppers during storage or shipment. In addition, if a snuff bottle lot is exhibited or purchased by a buyer outside the United States, Bonhams may remove any stopper accompanying a lot that contains restricted materials.

CONDITIONS OF SALE

The following Conditions of Sale, as amended by any published or posted notices or verbal announcements during the sale, constitute the entire terms and conditions on which property listed in the catalog shall be offered for sale or sold by Bonhams & Butterfields Auctioneers Corp. and any consignor of such property for whom we act as agent. If live online bidding is available for the subject auction, additional terms and conditions of sale relating to online bidding will apply; see www.bonhams.com/WebTerms for the supplemental terms. As used herein, "Bonhams," "we" and "us" refer to Bonhams & Butterfields Auctioneers Corp.

1. As used herein, the term "bid price" means the price at which a lot is successfully knocked down to the purchaser. The term "purchase price" means the aggregate of (a) the bid price, (b) a PREMIUM retained by us and payable by the purchaser EQUAL TO 25% OF THE FIRST \$150,000 OF THE BID PRICE, 20% OF THE AMOUNT OF THE BID PRICE ABOVE \$150,000 UP TO AND INCLUDING \$3,000,000, AND 12% OF THE AMOUNT OF THE BID PRICE OVER \$3,000,000, and (c) unless the purchaser is exempt by law from the payment thereof, any Arizona, California, Colorado, Connecticut, Florida, Georgia, Illinois, Massachusetts, Nevada, New Jersey, New York, Pennsylvania, Texas, Virginia, Washington, D.C., Washington state, or other state or local sales tax (or compensating use tax) and other applicable taxes. With regard to New York sales tax, please refer to the "Sales and Use Tax" section of these Conditions of Sale.

2. On the fall of the auctioneer's hammer, the highest bidder shall have purchased the offered lot in accordance and subject to compliance with all of the conditions set forth herein and (a) assumes full risk and responsibility therefor, (b) if requested will sign a confirmation of purchase, and (c) will pay the purchase price in full or such part as we may require for all lots purchased. No lot may be transferred. Any person placing a bid as agent on behalf of another (whether or not such person has disclosed that fact or the identity of the principal) may be jointly and severally liable with the principal under any contract resulting from the acceptance of a bid.

Unless otherwise agreed, payment in good funds is due and payable within five (5) business days following the auction sale. Whenever the purchaser pays only a part of the total purchase price for one or more lots purchased, we may apply such payments, in our sole discretion, to the lot or lots we choose. Payment will not be deemed made in full until we have collected good funds for all amounts due.

Payment for purchases may be made in or by (a) cash, (b) cashier's check or money order, (c) personal check with approved credit drawn on a U.S. bank, (d) wire transfer or other immediate bank transfer, or (e) Visa, MasterCard, American Express or Discover credit, charge or debit card. A processing fee will be assessed on any returned checks. Please note that the amount of cash notes and cash equivalents that can be accepted from a given purchaser may be limited.

To the fullest extent permitted by applicable law: The purchaser grants us a security interest in the property, and we may retain as collateral security for the purchaser's obligations to us, any property and all monies held or received by us for the account of the purchaser, in our possession. We also retain all rights of a secured party under the California Commercial Code. If the foregoing conditions or any other applicable conditions herein are not complied with, in addition to all other remedies available to us and the consignor by law, we may at our election: (a) hold the purchaser liable for the full purchase price and any late charges, collection costs, attorneys' fees and costs, expenses and incidental damages incurred by us or the consignor arising out of the purchaser's breach; (b) cancel the sale, retaining as liquidated damages all payments made by the purchaser; and/or (c) cancel the sale and/or resell the purchased property, at public auction and/or by private

sale, and in such event the purchaser shall be liable for the payment of all consequential damages, including any deficiencies or monetary losses, and all costs and expenses of such sale or sales, our commissions at our standard rates, all other charges due hereunder, all late charges, collection costs, attorneys' fees and costs, expenses and incidental damages. In addition, where two or more amounts are owed in respect of different transactions by the purchaser to us, to Bonhams 1793 Limited and/or to any of our other affiliates, subsidiaries or parent companies worldwide within the Bonhams Group, we reserve the right to apply any monies paid in respect of a transaction to discharge any amount owed by the purchaser. If all fees, commissions, premiums, bid prices and other sums due to us from the purchaser are not paid promptly as provided in these Conditions of Sale, we reserve the right to impose a finance charge equal to 1.5% per month (or, if lower, the maximum nonusurious rate of interest permitted by applicable law), on all amounts due to us beginning on the 31st day following the sale until payment is received, in addition to other remedies available to us by law.

3. We reserve the right to withdraw any property and to divide and combine lots at any time before such property's auction. Unless otherwise announced by the auctioneer at the time of sale, all bids are per lot as numbered in the catalog and no lots shall be divided or combined for sale.

4. We reserve the right to reject a bid from any bidder, to split any bidding increment, and to advance the bidding in any manner the auctioneer may decide. In the event of any dispute between bidders, or in the event the auctioneer doubts the validity of any bid, the auctioneer shall have sole and final discretion either to determine the successful bidder or to re-offer and resell the article in dispute. If any dispute arises after the sale, our sales records shall be conclusive in all respects.

5. If we are prevented by fire, theft or any other reason whatsoever from delivering any property to the purchaser or a sale otherwise cannot be completed, our liability shall be limited to the sum actually paid therefor by the purchaser and shall in no event include any compensatory, incidental or consequential damages.

6. If a lot is offered subject to a reserve, we may implement such reserve by bidding on behalf of the consignor, whether by opening bidding or continuing bidding in response to other bidders until reaching the reserve. If we have an interest in an offered lot and the proceeds therefrom other than our commissions, we may bid therefor to protect such interest. CONSIGNORS ARE NOT ALLOWED TO BID ON THEIR OWN ITEMS.

7. All statements contained in the catalog or in any bill of sale, condition report, invoice or elsewhere as to authorship, period, culture, source, origin, measurement, quality, rarity, provenance, importance, exhibition and literature of historical relevance, or physical condition ARE QUALIFIED STATEMENTS OF OPINION AND NOT REPRESENTATIONS OR WARRANTIES. No employee or agent of Bonhams is authorized to make on our behalf or on that of the consignor any representation or warranty, oral or written, with respect to any property.

8. All purchased property shall be removed from the premises at which the sale is conducted by the date(s) and time(s) set forth in the "Buyer's Guide" portion of the catalog. If not so removed, daily storage fees will be payable to us by the purchaser as set forth therein. We reserve the right to transfer property not so removed to an offsite warehouse at the purchaser's risk and expense, as set forth in more detail in the "Buyer's Guide." Accounts must be settled in full before property will be released. Packing and handling of purchased lots are the responsibility of the purchaser. Bonhams can provide packing and shipping services for certain items as noted in the "Buyer's Guide" section of the catalog.

9. The copyright in the text of the catalog and the photographs, digital images and illustrations of lots in the catalog belong to Bonhams or its licensors. You will not reproduce or permit anyone else to reproduce such text, photographs, digital images or illustrations without our prior written consent.

10. These Conditions of Sale shall bind the successors and assigns of all bidders and purchasers and inure to the benefit of our successors and assigns. No waiver, amendment or modification of the terms hereof (other than posted notices or oral announcements during the sale) shall bind us unless specifically stated in writing and signed by us. If any part of these Conditions of Sale is for any reason invalid or unenforceable, the rest shall remain valid and enforceable.

11. These Conditions of Sale and the purchaser's and our respective rights and obligations hereunder are governed by the laws of the State of California. By bidding at an auction, each purchaser and bidder agrees to be bound by these Conditions of Sale. Any dispute, controversy or claim arising out of or relating to this agreement, or the breach, termination or validity thereof, brought by or against Bonhams (but not including claims brought against the consignor by the purchaser of lots consigned hereunder) shall be resolved by the procedures set forth below.

SALES AND USE TAX

New York sales tax is charged on the hammer price, buyer's premium and any other applicable charges on any property collected or delivered in New York State, regardless of the state or country in which the purchaser resides or does business. Purchasers who make direct arrangements for collection by a shipper who is considered a "private" or "contract" carrier by the New York Department of Taxation and Finance will be charged New York sales tax, regardless of the destination of the property. Property collected for delivery to a destination outside of New York by a shipper who is considered a "common carrier" by the New York Department of Taxation and Finance (e.g. United States Postal Service, United Parcel Service, and FedEx) is not subject to New York sales tax, but if it is delivered into any state in which Bonhams is registered or otherwise conducts business sufficient to establish a nexus, Bonhams may be required by law to collect and remit the appropriate sales tax in effect in such state. Property collected for delivery outside of the United States by a freight-forwarder who is registered with the Transportation Security Administration ("TSA") is not subject to New York sales tax.

MEDIATION AND ARBITRATION PROCEDURES

(a) Within 30 days of written notice that there is a dispute, the parties or their authorized and empowered representatives shall meet by telephone and/or in person to mediate their differences. If the parties agree, a mutually acceptable mediator shall be selected and the parties will equally share such mediator's fees. The mediator shall be a retired judge or an attorney familiar with commercial law and trained in or qualified by experience in handling mediations. Any communications made during the mediation process shall not be admissible in any subsequent arbitration, mediation or judicial proceeding. All proceedings and any resolutions thereof shall be confidential, and the terms governing arbitration set forth in paragraph (c) below shall govern.

(b) If mediation does not resolve all disputes between the parties, or in any event no longer than 60 days after receipt of the written notice of dispute referred to above, the parties shall submit the dispute for binding arbitration before a single neutral arbitrator. Such arbitrator shall be a retired judge or an attorney familiar with commercial law and trained in or qualified by experience in handling arbitrations. Such arbitrator shall make all appropriate disclosures required by law. The arbitrator shall be drawn from a panel of a national arbitration service agreed to by the parties, and shall be selected as follows: (i) If the national arbitration service has specific rules or procedures, those rules or procedures shall be followed; (ii) If the national arbitration service does not

have rules or procedures for the selection of an arbitrator, the arbitrator shall be an individual jointly agreed to by the parties. If the parties cannot agree on a national arbitration service, the arbitration shall be conducted by the American Arbitration Association, and the arbitrator shall be selected in accordance with the Rules of the American Arbitration Association. The arbitrator's award shall be in writing and shall set forth findings of fact and legal conclusions.

(c) Unless otherwise agreed to by the parties or provided by the published rules of the national arbitration service:

(i) the arbitration shall occur within 60 days following the selection of the arbitrator;

(ii) the arbitration shall be conducted in the designated location, as follows: (A) in any case in which the subject auction by Bonhams took place or was scheduled to take place in the State of New York or Connecticut or the Commonwealth of Massachusetts, the arbitration shall take place in New York City, New York; (B) in all other cases, the arbitration shall take place in the city of San Francisco, California; and

(iii) discovery and the procedure for the arbitration shall be as follows:

(A) All arbitration proceedings shall be confidential;

(B) The parties shall submit written briefs to the arbitrator no later than 15 days before the arbitration commences;

(C) Discovery, if any, shall be limited as follows: (I) Requests for no more than 10 categories of documents, to be provided to the requesting party within 14 days of written request therefor; (II) No more than two (2) depositions per party, provided however, the deposition(s) are to be completed within one (1) day; (III) Compliance with the above shall be enforced by the arbitrator in accordance with California law;

(D) Each party shall have no longer than eight (8) hours to present its position. The entire hearing before the arbitrator shall not take longer than three (3) consecutive days;

(E) The award shall be made in writing no more than 30 days following the end of the proceeding. Judgment upon the award rendered by the arbitrator may be entered by any court having jurisdiction thereof.

To the fullest extent permitted by law, and except as required by applicable arbitration rules, each party shall bear its own attorneys' fees and costs in connection with the proceedings and shall share equally the fees and expenses of the arbitrator.

LIMITED RIGHT OF RESCISSION

If within one (1) year from the date of sale, the original purchaser (a) gives written notice to us alleging that the identification of Authorship (as defined below) of such lot as set forth in the **BOLD TYPE** heading of the catalog description of such lot (as amended by any saleroom notices or verbal announcements during the sale) is not substantially correct based on a fair reading of the catalog (including the terms of any glossary contained therein), and (b) within 10 days after such notice returns the lot to us in the same condition as at the time of sale, and (c) establishes the allegation in the notice to our satisfaction (including by providing one or more written opinions by recognized experts in the field, as we may reasonably require), then the sale of such lot will be rescinded and, unless we have already paid to the consignor monies owed him in connection with the sale, the original purchase price will be refunded.

If, prior to receiving such notice from the original purchaser alleging such defect, we have paid the consignor monies owed him in connection with the sale, we shall pay the original purchaser the amount of our commissions, any other sale proceeds to which we are entitled and applicable taxes received from the purchaser on the sale and make demand on the consignor to pay the balance of the original purchase price to the original purchaser. Should the consignor fail to pay such amount promptly, we may disclose the identity of the consignor and assign to the original purchaser our rights against the consignor with respect to the lot the sale of which is sought to be rescinded. Upon such disclosure and assignment, any liability of Bonhams as consignor's agent with respect to said lot shall automatically terminate.

The foregoing limited right of rescission is available to the original purchaser only and may not be assigned to or relied upon by any subsequent transferee of the property sold. The purchaser hereby accepts the benefit of the consignor's warranty of title and other representations and warranties made by the consignor for the purchaser's benefit. Nothing in this section shall be construed as an admission by us of any representation

of fact, express or implied, obligation or responsibility with respect to any lot. THE PURCHASER'S SOLE AND EXCLUSIVE REMEDY AGAINST BONHAMS FOR ANY REASON WHATSOEVER IS THE LIMITED RIGHT OF RESCISSION DESCRIBED IN THIS SECTION.

"Authorship" means only the identity of the creator, the period, culture and source or origin of the lot, as the case may be, as set forth in the **BOLD TYPE** heading of the print catalog entry. The right of rescission does not extend to: (a) works of art executed before 1870 (unless these works are determined to be counterfeits created since 1870), as this is a matter of current scholarly opinion which can change; (b) titles, descriptions, or other identification of offered lots, which information normally appears in lower case type below the **BOLD TYPE** heading identifying the Authorship; (c) Authorship of any lot where it was specifically mentioned that there exists a conflict of specialist or scholarly opinion regarding the Authorship of the lot at the time of sale; (d) Authorship of any lot which as of the date of sale was in accordance with the then generally-accepted opinion of scholars and specialists regarding the same; or (e) the identification of periods or dates of creation in catalog descriptions which may be proven inaccurate by means of scientific processes that are not generally accepted for use until after publication of the catalog in which the property is offered or that were unreasonably expensive or impractical to use at the time of such publication.

LIMITATION OF LIABILITY

EXCEPT AS EXPRESSLY PROVIDED ABOVE, ALL PROPERTY IS SOLD "AS IS." NEITHER BONHAMS NOR THE CONSIGNOR MAKES ANY REPRESENTATION OR WARRANTY, EXPRESS OR IMPLIED, AS TO THE MERCHANTABILITY, FITNESS OR CONDITION OF THE PROPERTY OR AS TO THE CORRECTNESS OF DESCRIPTION, GENUINENESS, ATTRIBUTION, PROVENANCE OR PERIOD OF THE PROPERTY OR AS TO WHETHER THE PURCHASER ACQUIRES ANY COPYRIGHTS OR OTHER INTELLECTUAL PROPERTY RIGHTS IN LOTS SOLD OR AS TO WHETHER A WORK OF ART IS SUBJECT TO THE ARTIST'S MORAL RIGHTS OR OTHER RESIDUAL RIGHTS OF THE ARTIST. THE PURCHASER EXPRESSLY ACKNOWLEDGES AND AGREES THAT IN NO EVENT SHALL BONHAMS BE LIABLE FOR ANY DAMAGES INCLUDING, WITHOUT LIMITATION, ANY COMPENSATORY, INCIDENTAL OR CONSEQUENTIAL DAMAGES.

SELLER'S GUIDE

SELLING AT AUCTION

Bonhams can help you every step of the way when you are ready to sell art, antiques and collectible items at auction. Our regional offices and representatives throughout the US are available to service all of your needs. Should you have any further questions, please visit our website at www.bonhams.com/us for more information or call our Client Services Department at +1 (212) 644 9001.

AUCTION ESTIMATES

The first step in the auction process is to determine the auction value of your property. Bonhams' world-renowned specialists will evaluate your special items at no charge and in complete confidence. You can obtain an auction estimate in many ways:

- Attend one of our Auction Appraisal Events held regularly at our galleries and in other major metropolitan areas. The updated schedule for Bonhams Auction Appraisal Events is available at www.bonhams.com/us.
- Call our Client Services Department to schedule a private appointment at one of our galleries. If you have a large collection, our specialists can travel, by appointment, to evaluate your property on site.
- Send clear photographs to us of each individual item, including item dimensions and other pertinent information with each picture. Photos should be sent to Bonhams' address in envelopes marked

as "photo auction estimate". Alternatively, you can submit your request using our online form at www.bonhams.com/us. Digital images may be attached to the form. Please limit your images to no more than five (5) per item.

CONSIGNING YOUR PROPERTY

After you receive an estimate, you may consign your property to us for sale in the next appropriate auction. Our staff assists you throughout the process, arranging transportation of your items to our galleries (at the consignor's expense), providing a detailed inventory of your consignment, and reporting the prices realized for each lot. We provide secure storage for your property in our warehouses and all items are insured throughout the auction process. You will receive payment for your property approximately 35 days after completion of sale.

Sales commissions vary with the potential auction value of the property and the particular auction in which the property is offered. Please call us for commission rates.

PROFESSIONAL APPRAISAL SERVICES

Bonhams' specialists conduct insurance and fair market value appraisals for private collectors, corporations, museums, fiduciaries and government entities on a daily basis. Insurance appraisals, used for insurance purposes, reflect the cost of replacing property in today's retail market. Fair market value appraisals are used for estate,

tax and family division purposes and reflect prices paid by a willing buyer to a willing seller.

When we conduct a private appraisal, our specialists will prepare a thorough inventory listing of all your appraised property by category. Valuations, complete descriptions and locations of items are included in the documentation.

Appraisal fees vary according to the nature of the collection, the amount of work involved, the travel distance, and whether the property is subsequently consigned for auction.

Our appraisers are available to help you anywhere and at any time. Please call our Client Services Department to schedule an appraisal.

ESTATE SERVICES

Since 1865, Bonhams has been serving the needs of fiduciaries – lawyers, trust officers, accountants and executors – in the disposition of large and small estates. Our services are specially designed to aid in the efficient appraisal and disposition of fine art, antiques, jewelry, and collectibles. We offer a full range of estate services, ranging from flexible financial terms to tailored accounting for heirs and their agents to world-class marketing and sales support.

For more information or to obtain a detailed Trust and Estates package, please visit our website at www.bonhams.com/us or contact our Client Services Department.

BUYER’S GUIDE

BIDDING & BUYING AT AUCTION

Whether you are an experienced bidder or an enthusiastic novice, auctions provide a stimulating atmosphere unlike any other. Bonhams previews and sales are free and open to the public. As you will find in these directions, bidding and buying at auction is easy and exciting. Should you have any further questions, please visit our website at www.bonhams.com or call our Client Services Department at +1 (212) 644 9001.

Catalogs

Before each auction we publish illustrated catalogs. Our catalogs provide descriptions and estimated values for each “lot.” A lot may refer to a single item or to a group of items auctioned together. The catalogs also include the dates and the times for the previews and auctions. We offer our catalogs by subscription or by single copy. For information on subscribing to our catalogs, you may refer to the subscription form in this catalog, call our Client Services Department, or visit our website at www.bonhams.com/us.

Previews

Auction previews are your chance to inspect each lot prior to the auction. We encourage you to look closely and examine each object on which you may want to bid so that you will know as much as possible about it. Except as expressly set forth in the Conditions of Sale, items are sold “as is” and with all faults; illustrations in our catalogs, website and other materials are provided for identification only. At the previews, our staff is always available to answer your questions and guide you through the auction process. Condition reports may be available upon request.

Estimates

Bonhams catalogs include low and high value estimates for each lot, exclusive of the buyer’s premium and tax. The estimates are provided as an approximate guide to current market value based primarily on previous auction results for comparable pieces, and should not be interpreted as a representation or prediction of actual selling prices. They are determined well in advance of a sale and are subject to revision. Please contact us should you have any questions about value estimates.

Reserves

Unless indicated by the ρ symbol next to the lot number, which denotes no reserve, all lots in the catalog are subject to a reserve. The reserve is the minimum auction price that the consignor is willing to accept for a lot. This amount is confidential and does not exceed the low estimate value.

Auction House’s Interest in Property Offered at Auction

On occasion, Bonhams may offer property in which it has an ownership interest in whole or in part or otherwise has an economic interest. Such property, if any, is identified in the catalog with a \blacktriangle symbol next to the lot number(s).

Bonhams may also offer property for a consignor that has been guaranteed a minimum price for its property by Bonhams or jointly by Bonhams and a third party. Bonhams and any third parties providing a guarantee may benefit financially if the guaranteed property is sold successfully and may incur a financial loss if its sale is not successful. Such property, if any, is identified in the catalog with a \circ symbol next to the lot number(s).

Bidding at Auction

At Bonhams, you can bid in many ways: in person, via absentee bid, over the phone, or via Bonhams’ live online bidding facility. Absentee bids can be submitted in person, online, via fax or via email.

Valid Bonhams client accounts are required to participate in bidding activity. You can obtain registration information online, at the reception desk or by calling our Client Services Department.

By bidding at auction, whether in person or by agent, by absentee bid, telephone, online or other means, the buyer or bidder agrees to be bound by the Conditions of Sale.

Lots are auctioned in consecutive numerical order as they appear in the catalog. Bidding normally begins below the low estimate. The auctioneer will accept bids from interested parties present in the saleroom, from telephone bidders, and from absentee bidders who have left written bids in advance of the sale. The auctioneer may also execute bids on behalf of the consignor by placing responsive or consecutive bids for a lot up to the amount of the reserve, but never above it.

We assume no responsibility for failure to execute bids for any reason whatsoever.

In Person

If you are planning to bid at auction for the first time, you will need to register at the reception desk in order to receive a numbered bid card. To place a bid, hold up your card so that the auctioneer can clearly see it. Decide on the maximum auction price that you wish to pay, exclusive of buyer’s premium and tax, and continue bidding until your bid prevails or you reach your limit. If you are the successful bidder on a lot, the auctioneer will acknowledge your paddle number and bid amount.

Absentee Bids

As a service to those wishing to place bids, we may at our discretion accept bids without charge in advance of auction online or in writing on bidding forms available from us. “Buy” bids will not be accepted; all bids must state the highest bid price the bidder is willing to pay. Our auction staff will try to bid just as you would, with the goal of obtaining the item at the lowest bid price possible. In the event identical bids are submitted, the earliest bid submitted will take precedence. Absentee bids shall be executed in competition with other absentee bids, any applicable reserve, and bids from other auction participants. A friend or agent may place bids on your behalf, provided that we have received your written authorization prior to the sale. Absentee bid forms are available in our catalogs, online at www.bonhams.com/us, at offsite auction locations, and at our San Francisco, Los Angeles and New York galleries.

By Telephone

Under special circumstances, we can arrange for you to bid by telephone. To arrange for a telephone bid, please contact our Client Services Department a minimum of 24 hours prior to the sale.

Online

We offer live online bidding for most auctions and accept absentee bids online for all our auctions. Please visit www.bonhams.com/us for details.

Bid Increments

Bonhams generally uses the following increment multiples as bidding progresses:

\$50-200	by \$10s
\$200-500	by \$20/50/80s
\$500-1,000	by \$50s
\$1,000-2,000	by \$100s
\$2,000-5,000	by \$200/500/800s
\$5,000-10,000	by \$500s
\$10,000-20,000	by \$1,000s
\$20,000-50,000	by \$2,000/5,000/8,000s
\$50,000-100,000	by \$5,000s
\$100,000-200,000	by \$10,000s
above \$200,000	at auctioneer’s discretion

The auctioneer may split or reject any bid at any time at his or her discretion as outlined in the Conditions of Sale.

Currency Converter

Solely for the convenience of bidders, a currency converter may be provided at Bonhams’ auctions. The rates quoted for conversion of other currencies to U.S. Dollars are indications only and should not be relied upon by a bidder, and neither Bonhams nor its agents shall be responsible for any errors or omissions in the operation or accuracy of the currency converter.

Buyer’s Premium

A buyer’s premium is added to the winning bid price of each individual lot purchased, at the rates set forth in the Conditions of Sale. The winning bid price plus the premium constitute the purchase price for the lot. Applicable sales taxes are computed based on this figure, and the total becomes your final purchase price.

Unless specifically illustrated and noted, fine art frames are not included in the estimate or purchase price. Bonhams accepts no liability for damage or loss to frames during storage or shipment.

All sales are final and subject to the Conditions of Sale found in our catalogs, on our website, and available at the reception desk.

Payment

All buyers are asked to pay and pick up by 3pm on the business day following the auction. Payment may be made to Bonhams by cash, checks drawn on a U.S. bank, money order, wire transfer, or by Visa, MasterCard, American Express or Discover credit or charge card or debit card. All items must be paid for within 5 business days of the sale. Please note that payment by personal or business check may result in property not being released until purchase funds clear our bank. For payments sent by mail, please remit to Cashier Department, 220 San Bruno Avenue, San Francisco, CA 94103.

Sales Tax

Residents of states listed in Paragraph 1 of the Conditions of Sale must pay applicable sales tax. Other state or local taxes (or compensation use taxes) may apply. Sales tax will be automatically added to the invoice unless a valid resale number has been furnished or the property is shipped via common carrier to destinations outside the states listed in the Conditions of Sale. If you wish to use your resale license please contact Cashiers for our form.

Shipping & Removal

Bonhams can accommodate shipping for certain items. Please contact our Cashiers Department for more information or to obtain a quote. Carriers are not permitted to deliver to PO boxes.

International buyers are responsible for all import/export customs duties and taxes. An invoice stating the actual purchase price will accompany all international purchases.

Collection of Purchases

Please arrange for the packing and transport of your purchases prior to collection at our office. If you are sending a third party shipper, please request a release form from us and return it to +1 (212) 644 9009 prior to your scheduled pickup. To schedule collection of purchases, please call +1 (212) 644 9001.

Handling and Storage Charges

Bonhams will hold all purchased lots in our gallery until Wednesday September 27 2017 without penalty. After Wednesday September 27 2017 collection of lots will be by appointment only. Please call +1(212) 644 9001 at least 24 hours in advance to make an appointment.

Please note that our offices have requirements for freight elevator usage. Please contact us to schedule an elevator appointment for pickup of any large or awkward items.

CONTACTS

OFFICERS

Malcolm Barber
Co-Chairman

Matthew Girling
Chief Executive Officer

Laura King Pfaff •
Chairman Emeritus

Leslie Wright
Vice President, Trusts and Estates

Jon King
Vice President, Business Development

Vice Presidents, Specialists
Susan F. Abeles
Rupert Banner
Kayla Carlsen
Judith Eurich
Mark Fisher
Dessa Goddard
Jakob Greisen
Bruce McLaren
Scot Levitt
Mark Osborne
Brooke Sivo
Catherine Williamson
William O'Reilly

REPRESENTATIVES

Arizona

Terri Adrian-Hardy, (602) 684 5747

California

David Daniel
(916) 364 1645, Central Valley

California

Brooke Sivo
(760) 350 4255, Palm Springs
(323) 436 5420, San Diego

Colorado

Julie Segraves, (720) 355 3737 •

Florida

Jon King
(561) 651 7876, Palm Beach
(305) 228 6600, Miami
(954) 566 1630, Ft. Lauderdale

Georgia

Mary Moore Bethea, (404) 842 1500 •

Illinois

Ricki Harris
(773) 267 3300, (773) 680 2881

Massachusetts/New England

Amy Corcoran, (617) 742 0909

Nevada

David Daniel, (775) 831 0330

New Jersey

Alan Fausel, (973) 997 9954 •

New Mexico

Michael Bartlett, (505) 820 0701

Oregon and Idaho

Sheryl Acheson, (503) 312 6023

Pennsylvania

Alan Fausel, (610) 644 1199 •

Texas, Oklahoma and Louisiana

Amy Lawch, (713) 621 5988 •

Virginia and Washington DC

Gertraud Hechl, (540) 454 2437 •

Washington

Heather O'Mahony, (206) 218 5011

Canada, Toronto, Ontario

Jack Kerr-Wilson, (416) 462 9004 •

Montreal, Quebec

David Kelsey, (514) 894 1138 •

BONHAMS *

NEW YORK DEPARTMENTS
580 Madison Avenue
New York, New York 10022
(212) 644 9001

Books & Manuscripts

Darren Sutherland, (212) 461 6531
Ian Ehling, (212) 644 9094

Chinese Works of Art & Paintings

Bruce MacLaren, (917) 206 1677
Nicolas Rice, (917) 206 1622
Ming Hua, (646) 837 8132

Collectors' Motorcars & Motorcycles

Rupert Banner, (212) 461 6515
Eric Minoff, (917) 206 1630
Evan Ide, (917) 340 4657
Michael Caimano, (917) 206 1615

Fine Art

American

Kayla Carlsen, (917) 206 1699

Contemporary

Jeremy Goldsmith, (917) 206 1656
Megan Murphy, (212) 644 9020

European Paintings

Madalina Lazen, (212) 644 9108

Impressionist & Modern

William O'Reilly, (212) 644 9135

Himalayan Art

Mark Rasmussen, (917) 206 1688

Japanese Works of Art

Jeff Olson, (212) 461 6516

Jewelry

Susan F. Abeles, (212) 461 6525
Caroline Morrissey, (212) 644 9046
Camille Barbier, (212) 644 9035

Maritime Paintings & Works of Art

Gregg Dietrich, (212) 644 9001 •

Modern Decorative Arts & Design

Benjamin Walker, (212) 710 1306

Photographs & Prints

Shawna Brickley, (917) 206 1690
Laura Paterson, (917) 206 1653

Russian Fine & Decorative Arts

Yelena Harbick, (212) 644 9136

Trusts & Estates

Sherri Cohen, (917) 206 1671

Watches & Clocks

Jonathan Snellenburg, (212) 461 6530
Jonathan Hochman, (917) 206 1618

CLIENT SERVICES DEPARTMENT

San Francisco

(415) 861 7500
(415) 861 8951 fax

Monday - Friday, 9am to 5pm

Los Angeles

(323) 850 7500
(323) 850 6090 fax

Monday - Friday, 9am to 5pm

BONHAMS *

SAN FRANCISCO DEPARTMENTS
220 San Bruno Avenue
San Francisco California 94103
(415) 861 7500

20th Century Fine Art

Dane Jensen, (323) 436 5451

Arms & Armor

Paul Carella, (415) 503 3360

Asian Works of Art

Dessa Goddard, (415) 503 3333

Books & Manuscripts

Adam Stackhouse, (415) 503 3266

Chinese Works of Art

Daniel Herskee, (415) 503 3271

Jewelry & Watches

Shannon Beck, (415) 503 3306

Collectors' Motorcars & Motorcycles

Mark Osborne, (415) 503 3353
Jakob Greisen, (415) 503 3284

Museum Services

Laura King Pfaff, (415) 503 3210

Native American Art

Ingmars Lindbergs, (415) 503 3393

California & Western

Paintings & Sculpture

Aaron Bastian, (415) 503 3241

Photographs & Prints

Judith Eurich, (415) 503 3259

Space History

Adam Stackhouse, (415) 503 3266

Trusts & Estates

Victoria Richardson, (415) 503 3207
Celeste Smith, (415) 503 3214

Wine

Erin McGrath, (415) 503 3319

Writing Instruments

Ivan Briggs, (415) 503 3255

BONHAMS *

LOS ANGELES DEPARTMENTS
7601 W. Sunset Boulevard
Los Angeles California 90046
(323) 850 7500

20th Century Decorative Arts

Angela Past, (323) 436 5422

20th Century Fine Art

Alexis Chompaisal, (323) 436 5469

African, Oceanic & Pre-Columbian Art

Fredric W. Backlar, (323) 436 5416 •

Books & Manuscripts

Catherine Williamson, (323) 436 5442

Coins & Banknotes

Paul Song, (323) 436 5455

Contemporary Art

Dane Jensen, (323) 436 5451

Entertainment Memorabilia

Catherine Williamson, (323) 436 5442
Dana Hawkes, (978) 283 1518

Furniture & Decorative Arts

Andrew Jones, (323) 436 5432
Jennifer Kurtz, (323) 436 5478

Jewelry & Watches

Dana Ehrman, (323) 436 5407
Alexis Vourvoulis, (323) 436 5483

Collectors' Motorcars & Motorcycles

Nick Smith, (323) 436 5470

Photographs & Prints

Morisa Rosenberg, (323) 436 5435

Natural History

Thomas E. Lindgren, (310) 469 8567 •
Claudia Florian, G.J.G., (323) 436 5437 •

California & Western

Paintings & Sculpture

Scot Levitt, (323) 436 5425

Paintings - European

Mark Fisher, (323) 436 5488

Silver

Aileen Ward, (323) 436 5463

Trusts & Estates

Leslie Wright, (323) 436 5408
Joseph Francaviglia, (323) 436 5443

* Indicates saleroom
• Indicates independent contractor

The following information is recorded
and available 24 hours a day, 7 days a
week, through our telephone system:

- Auction and Preview Information
- Directions to Bonhams's salesrooms
- Automated Auction Results

Auction Registration Form

(Attendee / Absentee / Online / Telephone Bidding)

Please circle your bidding method above.

<input type="checkbox"/>	<input type="checkbox"/>	<input type="checkbox"/>	<input type="checkbox"/>
--------------------------	--------------------------	--------------------------	--------------------------

Paddle number (for office use only)

General Notice: This sale will be conducted in accordance with Bonhams Conditions of Sale, and your bidding and buying at the sale will be governed by such terms and conditions. Please read the Conditions of Sale in conjunction with the Buyer's Guide relating to this sale and other published notices and terms relating to bidding. Payment by personal or business check may result in your property not being released until purchase funds clear our bank. Checks must be drawn on a U.S. bank.

Notice to Absentee Bidders: In the table below, please provide details of the lots on which you wish to place bids at least 24 hours prior to the sale. Bids will be rounded down to the nearest increment. Please refer to the Buyer's Guide in the catalog for further information relating to instructions to Bonhams to execute absentee bids on your behalf. Bonhams will endeavor to execute bids on your behalf but will not be liable for any errors or non-executed bids.

Notice to First Time Bidders: New clients are requested to provide photographic proof of ID - passport, driving license, ID card, together with proof of address - utility bill, bank or credit card statement etc. Corporate clients should also provide a copy of their articles of association / company registration documents, together with a letter authorizing the individual to bid on the company's behalf. Failure to provide this may result in your bids not being processed. For higher value lots you may also be asked to provide a bankers reference.

Notice to online bidders: If you have forgotten your username and password for www.bonhams.com, please contact Client Services.

If successful

I will collect the purchases myself ☐
Please contact me with a shipping quote (if applicable) ☐
I will arrange a third party to collect my purchase(s) ☐

Please email or fax the completed Registration Form and requested information to:

Bonhams Client Services Department
580 Madison Avenue
New York, New York 10022
Tel +1 (212) 644 9001
Fax +1 (212) 644 9009
bids.us@bonhams.com

Bonhams

Sale title: The Dr. Sylvan and Faith Golder Collection of Fine Chinese Snuff Bottles	Sale date: 11 September 2017
Sale no. 24661	Sale venue: New York
General Bid Increments: \$10 - 200by 10s \$200 - 500by 20 / 50 / 80s \$500 - 1,000by 50s \$1,000 - 2,000by 100s \$2,000 - 5,000by 200 / 500 / 800s \$5,000 - 10,000by 500s \$10,000 - 20,000by 1,000s \$20,000 - 50,000by 2,000 / 5,000 / 8,000s \$50,000 - 100,000by 5,000s \$100,000 - 200,000by 10,000s above \$200,000at the auctioneer's discretion The auctioneer has discretion to split any bid at any time.	
Customer Number	Title
First Name	Last Name
Company name (to be invoiced if applicable)	
Address	
City	County / State
Post / Zip code	Country
Telephone mobile	Telephone daytime
Telephone evening	Fax
Telephone bidders: indicate primary and secondary contact numbers by writing ① or ② next to the telephone number.	
E-mail (in capitals) _____ By providing your email address above, you authorize Bonhams to send you marketing materials and news concerning Bonhams and partner organizations. Bonhams does not sell or trade email addresses.	
I am registering to bid as a private client <input type="checkbox"/>	I am registering to bid as a trade client <input type="checkbox"/>
Resale: please enter your resale license number here _____ We may contact you for additional information.	

SHIPPING	
Shipping Address (if different than above):	
Address: _____	Country: _____
City: _____	Post/ZIP code: _____

Please note that all telephone calls are recorded.

Type of bid (A-Absentee, T-Telephone)	Lot no.	Brief description (In the event of any discrepancy, lot number and not lot description will govern.) If you are bidding online there is no need to complete this section.	MAX bid in US\$ (excluding premium and applicable tax) Emergency bid for telephone bidders only*

You instruct us to execute each absentee bid up to the corresponding bid amount indicated above.

* Emergency Bid: A maximum bid (exclusive of Buyer's Premium and tax) to be executed by Bonhams only if we are unable to contact you by telephone or should the connection be lost during bidding.

BY SIGNING THIS FORM YOU AGREE THAT YOU HAVE READ AND UNDERSTAND OUR CONDITIONS OF SALE AND SHALL BE LEGALLY BOUND BY THEM, AND YOU AGREE TO PAY THE BUYER'S PREMIUM, ANY APPLICABLE TAXES, AND ANY OTHER CHARGES MENTIONED IN THE BUYER'S GUIDE OR CONDITIONS OF SALE. THIS AFFECTS YOUR LEGAL RIGHTS.	
Your signature:	Date:



EB 1793

Bonhams

580 Madison Avenue
New York, New York 10022

+1 212 644 9001
+1 212 644 9009 fax

