

CALIFORNIA JEWELS

Tuesday April 10, 2018

Los Angeles



Bonhams



CALIFORNIA JEWELS

Tuesday April 10, 2018 at 10am

Los Angeles

BONHAMS

7601 West Sunset Blvd,
Los Angeles, CA 90046
bonhams.com

PREVIEW

New York

Wednesday March 21,
10am-5pm
(by appointment only)
Thursday March 22,
10am-5pm
(by appointment only)

Los Angeles

Wednesday April 4,
12pm-5pm
Thursday April 5,
12pm-5pm
Friday April 6,
12pm-5pm
Saturday April 7,
12pm-5pm
Sunday April 8,
12pm-5pm

SALE NUMBER:

24860

CATALOG:

\$35.00

ILLUSTRATIONS

Front cover: Lot 385
Inside front cover: Lot 451 & 454
Inside back cover: Lot 355
Back cover: Lot 58
Index: Lot 9

BIDS

+1 (323) 850 7500
+1 (323) 850 6090 fax
Email: bids.us@bonhams.com
To bid via the internet please visit
www.bonhams.com

TELEPHONE BIDDING

Bidding by telephone will only be accepted on a lot with a lower estimate in excess of \$1000.

Please note that bids should be submitted no later than 4pm on the day prior to the sale. New bidders must also provide proof of identity when submitting bids. Failure to do this may result in your bid not being processed.

Live online bidding is available for this sale

Please email bids@bonhams.com with 'live bidding' in the subject line 48 hours before the auction to register for this service.

INQUIRIES

Jean Ghika, FGA
Group Jewelry Director
+44 20 7468 8278
jean.ghika@bonhams.com

Los Angeles:

Dana Ehrman, GG
Director, LA Jewelry
Alexis Vourvoulis, GG
Kelly Sitek, GG
Erika Quinn
+1 (323) 436 5424
dana.ehrman@bonhams.com

New York:

Caroline Morrissey
Senior Specialist, US Jewelry
+1 (212) 644 9046
caroline.morrissey@bonhams.com

Camille Barbier, GG
Allaire Heisig
+1 (212) 461 6526

San Francisco:

Shannon Beck, GG
+1 (415) 503 3306
shannon.beck@bonhams.com

CLIENT SERVICES

Monday to Friday 9am-5pm
+1 (323) 850 7500
+1 (323) 850 6090 Fax

Please see pages 92 to 94 for bidder information including Conditions of Sale, after-sale collection and shipment.

Please note that irrespective of origin, jadeite and rubies (and any jewelry pieces that contain them) may now be imported into the United States.

Bonhams

220 San Bruno Avenue
San Francisco, California 94103
© 2018, Bonhams & Butterfields
Auctioneers Corp.; All rights reserved.
Bond No. 57BSBGL0808

IMPORTANT NAMES & NOTICES

DIAMONDS, COLORED STONES & PEARLS

The Jewelry department of Bonhams & Butterfields recognizes that there are many various forms of treatments and enhancements used in diamonds and colored stones in order to improve their appearance and or color. Techniques such as heat treatment have been used to improve the color and transparency of both sapphires and rubies in addition to other gemstones. Techniques such as oiling have been used to enhance the clarity of emeralds while dying has been used to effect the color of jade. Techniques such as heat treatment, oiling, resin impregnation, irradiation, color diffusion, dying, fracture filling, and HTHP are just a few off the techniques that are in use today. Prospective buyers are therefore reminded that unless otherwise noted in our catalog description it must be assumed that some form of enhancement may have been used and that such treatment may not always be permanent or detectable and that our estimates have taken such possibilities into account. As a matter of policy, Bonhams & Butterfields endeavors to obtain certificates from recognized gemological laboratories when such certificates are deemed crucial to the authenticity of a gemstone. It is not possible however to gain certificates for all items offered for sale and it is therefore recommended where there is no mention of a certificate that all prospective buyers consult with one of our department specialists prior to purchase of such items.

PLEASE NOTE: A number of laboratories issue certificates that give more detailed descriptions of gemstones, however there may not be consensus between different laboratories on the degrees, or types of treatment for any particular gemstone. Neither is there necessarily consensus between different laboratories, or private appraisers, on the grading of diamonds. All gemstone weights are approximations only and although an independent laboratory grading may be used in the catalog text, we cannot guarantee such gradings.

Images shown may appear smaller or larger than actual size.

Although we endeavor to mention in our descriptions significant defects, needed repairs, absent stones and the like, WE DO NOT GUARANTEE THAT THE DESCRIPTIONS ARE COMPREHENSIVE. Please examine all lots carefully. It is the responsibility of the prospective bidder, or his agent, to determine the condition of lots during the preview. Condition reports have been created for most lots in this auction, and are available upon request. Please contact the Jewelry department at least two days prior to the sale date for additional information.

It is the responsibility of the buyer to investigate any applicable restrictions on purchased property and to obtain any export or import licenses and/or certificates as well as any other required documentation before shipping. The buyer's inability to export or import any such items or to do so timely shall not serve as the basis for any cancellation or rescission of the sale or any delay in payment. Prospective buyers who are uncertain as to whether a lot is subject to these restrictions or any other restrictions on importation or exportation are advised to consult with the specialist department in which the property is offered.

REGULATED SPECIES MATERIALS AND CITES PERMITS

The export of a lot from the United States or import into certain countries may be subject to export or import regulations, licensure and/or other restrictions; in particular, lots containing plant or animal materials such as ivory, rhinoceros horn, tortoiseshell, coral, whalebone or certain types of woods, irrespective of age or value, may require the granting of one or more export or import licenses or certificates, or may be banned from import altogether by some countries. Moreover, the ability to obtain an export license or certificate does not insure the ability to obtain an import license or certificate in another country. Lots that contain such regulated species materials may also not be eligible for exportation or for re-importation into the United States if they are not at least 100 years of age, and, under current law, lots containing African Elephant Ivory may no longer be re-imported into the United States regardless of age. In addition, resales of lots containing certain regulated species materials may be subject to restrictions in some jurisdictions.

Lots noted in the catalog with a **Y** next to the lot number contain one or more such regulated plant or animal materials. **It is the buyer's responsibility to investigate any such restrictions and to obtain any relevant export or import licenses. Please note that this process is governed by local authorities and may take considerable time. Regardless of any delay in the obtaining of an export or import license or certificate or denial of a license's or certificate's issuance, purchased lots shall be paid for in accordance with the Conditions of Sale, and any such delay or denial shall not serve as the basis for cancellation of any sale.** Prospective buyers are advised to obtain information from the relevant regulatory authorities regarding export and import restrictions, requirements, and costs prior to bidding.

Prospective buyers should also check with their local (e.g. state) regulatory authorities regarding any local restrictions and/or permit requirements that may apply with respect to purchases of regulated species materials, including without limitation purchases of items containing elephant ivory or rhino horn. For example, we are advised that New York buyers of any lot containing elephant or mammoth ivory or rhino horn will be responsible for obtaining a New York State permit before taking possession of the lot within New York State, and that the State of New Jersey has banned the import of items containing elephant or marine mammal ivory or rhino horn into that state.

Upon request, Bonhams can refer the purchaser to a third party agent to assist the purchaser in attempting to obtain the appropriate licenses and/or certificates. However, there is no assurance that any necessary licenses or certificates can be obtained. Please contact the Specialist Department for a suggested list of shipping agents prior to placing a bid if you are uncertain as to whether a lot is subject to export/import license or certificate requirements or related restrictions.

WATCHES

Although we endeavor to mention in our descriptions significant defects, needed repairs, absent stones and the like, WE DO NOT GUARANTEE THAT THE DESCRIPTIONS ARE COMPREHENSIVE. Please examine all watches carefully. It is the responsibility of the prospective bidder, or his agent, to determine the condition of watches during the preview. Except as expressly set forth in the Conditions of Sale, all watches are sold "as is". We do not guarantee the accuracy or operation of any watch function such as timekeeping, chronograph, calendar, repeater or register.

We make no judgments as to whether diamond dials or diamond bezels originated at the factory or are later additions.

INDEX

NAME	LOT NUMBER
Andreoli	207, 451, 454
Angela Cummings	254
Baume & Mercier	54
Black Starr and Frost	183
Boucheron	116, 258
Buccellati	231, 399
Bulgari	61, 107, 108, 171, 430
Cartier	109, 111, 112, 117, 168, 267
Chaumet, French	373
Chopard	110, 161, 336
D'Zeiner	48, 75, 87, 233, 236, 421
David Webb	227, 367, 372
Denise Robergé	427
Diah D	417
DSL	119, 121, 122, 441, 444
English	7, 381
Ernst Noth	101
Fochtman	70
FOPE	225
Frascarolo	369, 370
Fred Leighton	320
Giolli	90
Ilias Lalaounis	354, 355
Gubelin	114
Hamilton	284
Henry Dunay	368
L'Amor	120
La Pepita	364
La Retna	173
Marina B.	251
MARSH & CO.	266
Marsh's	318
MOBA	307
Movado	39
Nardi	16
Nerso	64, 85, 422, 425, 426, 431
Omega	44
Oscar Heyman Brothers	306
P. Vendome	429, 88
Pejmani	150, 179
Piaget	170, 361
Ring-dant	164
Robilloti	86
Rolex	434
Rosenthal	18, 46
SeidenGang	424
Stephen Dweck	229
Tiffany & Co.	13, 58, 92, 155, 186, 299, 378, 385, 407, 408
Tobias	339
Top Notch Faceting and Brady Daniel Mesch	9
Van Cleef & Arpels	47, 268
Walton & Co.	327
WINC	126
Wolfers Frères	261
Zolatas	73

INCLUDING PROPERTY FROM

Property from a Pacific Northwest Collector
 Property of a Lady
 Property of a Los Angeles Collector
 Property of an English Lady
 Property from the Estate of a NJ Collector
 Property from a New York Collector
 Property from a Paradise Valley Estate
 Property formerly from a New York Socialite
 From a Private Texas Collection
 Property of a West Coast Collector
 Property of a Maryland Collection
 Property of an LA Collector
 Property of a Native San Franciscan
 Formerly the property of Prince Charles of Belgium and Elisabeth of Bavaria, Queen of Belgium
 Property of an LA Collector
 Property from a Northern California Collector
 Property of a Los Angeles Collector





1



2



3



4



6



5

1
A 14K GOLD WATCH CHAIN
*weighing approximately: 47 grams; length:
16 1/2in.*

US\$1,800 - 2,500
To be sold without reserve

2
A DIAMOND AND GOLD NAVETTE RING
*estimated total diamond weight: 2.25cts;
size: 6 1/2*

US\$1,500 - 2,000

3
**AN ENAMEL AND 14K GOLD PORTRAIT
PENDANT AND RING SET, FRENCH**
pendant length: 1 3/8in.; ring size: 5 1/4

US\$800 - 1,200
To be sold without reserve

4
A DIAMOND AND GOLD SNAKE CUFF
*gross weight approximately: 51 grams;
diameter: 2 1/8in.*

US\$2,500 - 3,000

5
A DIAMOND, SILVER AND GOLD RING
size: 7

US\$1,500 - 2,000

6
**AN 18TH CENTURY DIAMOND, ENAMEL,
SILVER AND GOLD MOURNING RING,
CIRCA 1790**
size: 9

US\$1,500 - 2,000



7

AN ART NOUVEAU TURQUOISE, FRESHWATER CULTURED PEARL AND 9K GOLD NECKLACE, ENGLISH, CIRCA 1905

length: 18in.

US\$1,800 - 2,500
To be sold without reserve



8

A CULTURED PEARL, DIAMOND AND 18K GOLD BROOCH

estimated total diamond weight: 2.30cts; dimensions: 1 1/2 x 1 3/8in.

US\$1,000 - 1,500



9

A COLORED SAPPHIRE AND 17K GREEN GOLD RING, TOP NOTCH FACETING AND BRADY DANIEL MESCH

fancy oval-shaped mixed-cut colored sapphire: 3.14cts; signed TNF and BDM; gross weight approximately: 25 grams; size: 9

US\$4,000 - 6,000



10

AN ART NOUVEAU CULTURED FRESHWATER PEARL, BLISTER PEARL AND GOLD NECKLACE, LIBERTY, CIRCA 1905

with fitted box; length: 18in.

US\$1,800 - 2,500
To be sold without reserve

11

A DIAMOND, CULTURED PEARL, ENAMEL AND GOLD BRACELET
gross weight approximately: 49 grams; length: 7in.

US\$1,500 - 2,500
To be sold without reserve





12
A REVERSE QUARTZ INTAGLIO, ENAMEL AND GOLD PIN, TIFFANY & CO.
signed Tiffany & Co. no.2732; with fitted box; length: 4in.

US\$800 - 1,200
 To be sold without reserve

13
AN EMERALD, BLISTER PEARL, PEARL, DIAMOND, SILVER AND GOLD NECKLACE, FRENCH
with French assay marks; gross weight approximately: 37 grams; length: 28 3/4in.

US\$4,000 - 6,000

14
A 19TH CENTURY DIAMOND AND SILVER-TOPPED GOLD 'EN TREMBLANT' FLOWER BROOCH
gross weight approximately: 55 grams; dimensions: 4 1/4 x 2in.

US\$1,000 - 1,500
 To be sold without reserve

15
A SPINEL, DIAMOND, ENAMEL AND 14K GOLD RING
oval mixed-cut spinel approximately: 7.94 x 6.41 x 3.35mm; size: 6 1/4

US\$800 - 1,200
 To be sold without reserve

16
AN EMERALD, DIAMOND, EBONY AND 18K GOLD BLACKAMoor BROOCH, NARDI
signed G.Nardi; estimated total diamond weight: 1.05cts; gross weight approximately: 28 grams; length: 1 3/4in.

US\$2,000 - 3,000



17



18



19



20



21



22

17
A PAIR OF EMERALD, CULTURED PEARL, DIAMOND, BLUE ENAMEL AND GOLD EARRINGS
length: 1 7/8in.

US\$800 - 1,200
To be sold without reserve

18
A PINK SAPPHIRE, DIAMOND AND 18K GOLD FLY BROOCH, ROSENTHAL
with maker's mark; estimated total diamond weight: 1.70cts; length: 1in.

US\$1,000 - 2,000

19
A DIAMOND AND SILVER-TOPPED 18K GOLD CROWN BROOCH
estimated total diamond weight: 2.85cts; length: 1 3/4in.

US\$2,000 - 3,000

20
A GOLD MESH COIN PURSE
weighing approximately: 60 grams; dimension: 3 3/8 x 2 1/2in.

US\$1,000 - 1,500
To be sold without reserve

21
A DIAMOND AND GOLD RING
estimated total diamond weight: 1.00ct; size: 9 1/4

US\$1,000 - 1,500

PROPERTY FROM THE ESTATE OF A NEW JERSEY COLLECTOR

22
A TURN OF THE CENTURY RUBY, DIAMOND AND GOLD RING
estimated total diamond weight: 1.10cts; size: 8 1/2

US\$800 - 1,200
To be sold without reserve



PROPERTY OF VARIOUS OWNERS

23^Y

A CORAL, DIAMOND AND 18K GOLD RING

coral bead approximately 16.20mm;
estimated total diamond weight: 1.35cts;
size 6 3/4

US\$2,000 - 3,000

24^Y

A PAIR OF CORAL, DIAMOND AND 18K GOLD EAR CLIPS

coral beads approximately: 14.10mm;
diameter: 3/4in.

US\$4,000 - 6,000

25^Y

A CORAL, DIAMOND AND 18K GOLD NECKLACE

coral beads approximately 15.3 to 10.8mm;
estimated total diamond weight: 13.80cts;
gross weight approximately: 174 grams;
length: 16in.

US\$12,000 - 18,000

PROPERTY FROM THE ESTATE OF A NEW JERSEY COLLECTOR

26

A LADY'S DIAMOND AND 14K GOLD CONCEALED DIAL BRACELET WRISTWATCH

mechanical movement; movement signed
Flora Watch Co.; dial signed Lemore; gross
weight approximately: 48 grams; length: 6
1/2in.

US\$800 - 1,000

To be sold without reserve

27

A GEM-SET GOLD CHARM BRACELET

gross weight approximately: 43 grams;
length: 7 1/2in.

US\$800 - 1,000

To be sold without reserve

28

A DIAMOND AND GOLD RING

estimated total diamond weight: 1.00ct; size: 5

US\$800 - 1,200

To be sold without reserve

PROPERTY OF VARIOUS OWNERS

29^Y

A GEM-SET, DIAMOND AND GOLD BRACELET

gross weight approximately: 51 grams;
length: 7 1/2in.

US\$2,000 - 3,000

PROPERTY FROM THE ESTATE OF A NEW JERSEY COLLECTOR

30

A GEM-SET GOLD CHARM BRACELET

gross weight approximately: 58 grams;
length: 7 1/4in.

US\$800 - 1,200

To be sold without reserve

31^Y

A GEM-SET 14K GOLD CHARM BRACELET

gross weight approximately: 85 grams;
length: 8in.

US\$800 - 1,200

To be sold without reserve

32

A DIAMOND AND 14K GOLD RING

estimated total diamond weight: 1.80cts;
size: 10

US\$1,500 - 2,000

33

A SAPPHIRE, DIAMOND AND 14K GOLD BRACELET

estimated total diamond weight: 1.40cts;
gross weight approximately: 75 grams;
length: 7 3/8in.

US\$2,000 - 3,000



39

10 | BONHAMS



40
A CULTURED PEARL NECKLACE
 pearls approximately: 9.0 to 9.3mm; with a 14k gold clasp; length: 30in.

US\$1,000 - 1,500

PROPERTY OF A LOS ANGELES COLLECTOR

41
A PAIR OF PINK SAPPHIRE, SAPPHIRE AND 14K GOLD COMPANION RINGS
 Size: 3 1/4

US\$1,200 - 1,800

42
A CITRINE AND 14K GOLD RING
 cut-corner rectangular step-cut citrine approximately 12.20 x 10.33 x 7.19mm; size: 10 1/4

US\$800 - 1,000
 To be sold without reserve

PROPERTY OF VARIOUS OWNERS

43
A COLLECTION OF GEM-SET GOLD BROOCHES
 gross weight approximately: 62 grams

US\$800 - 1,200
 To be sold without reserve

44
A LADY'S 18K GOLD CONCEALED DIAL BRACELET WRISTWATCH, OMEGA
 mechanical movement; dial and movement signed; case no. 59171; movement no. 19599572; gross weight approximately: 42 grams; width: 25mm; length: 6 3/4in.

US\$800 - 1,200
 To be sold without reserve



PROPERTY OF A LOS ANGELES COLLECTOR

45
AN 18K GOLD BRACELET
*gross weight approximately: 59 grams;
length: 7 1/2in*

US\$1,200 - 1,500

46
A DIAMOND AND 18K GOLD FLY BROOCH, ROSENTHAL
with maker's marks; estimated total diamond weight: 3.15cts; length: 1in.

US\$1,200 - 1,800

47
A DIAMOND AND GOLD ETERNITY BAND, VAN CLEEF & ARPELS, FRENCH
signed VCA, no. 22879, with French assay marks; estimated total diamond weight: 3.00cts; size: 4 1/2

US\$4,000 - 6,000

48
A CITRINE, DIAMOND AND 14K GOLD RING
oval mixed-cut citrine approximately: 16.18 x 13.53 x 9.05mm; size: 5 3/4

US\$1,200 - 1,800

49
A 14K GOLD HINGED BANGLE
weighing approximately: 25 grams; diameter: 2 1/2in.

US\$800 - 1,000

PROPERTY OF ANOTHER OWNER

50
A YELLOW BERYL, DIAMOND AND 18K GOLD RING, D'ZEINER
oval fancy mixed-cut yellow beryl approximately: 25.30 x 18.72 x 12.59mm; signed D'Zeiner; gross weight approximately: 35 grams; size: 5

US\$800 - 1,200
To be sold without reserve



51



53



52



54



55

PROPERTY FROM A PACIFIC NORTHWEST COLLECTOR

51
A JADEITE JADE AND 18K GOLD SADDLE RING

size: 11 1/4

US\$3,000 - 5,000

Accompanied by Mason Kay report #1800126-927, dated January 26, 2018, stating: Natural Jadeite Jade-No Dye or Polymer detected-'A' Jade.

PROPERTY OF VARIOUS OWNERS

52
A PLIQUE-À-JOUR ENAMEL, EMERALD, RUBY, DIAMOND AND 18K GOLD TURTLE BROOCH

estimated total diamond weight: 2.50cts;
gross weight approximately: 60 grams;
dimensions: 2 1/4 x 2in.

US\$1,500 - 2,500

53
A RUBY, DIAMOND AND GOLD BIRD BROOCH

estimated total diamond weight: 6.45cts;
gross weight approximately: 25 grams;
length: 3in.

US\$6,000 - 9,000

PROPERTY OF A LOS ANGELES COLLECTOR

54
A STAR SAPPHIRE AND 14K GOLD WATCH PENDANT ON ROPE CHAIN, BAUME & MERCIER

mechanical movement, with 14k gold rope chain, triple signed; gross weight approximately: 51 grams; case width: 36mm; chain length: 36in.

US\$1,200 - 1,800

PROPERTY OF VARIOUS OWNERS

55
A GEM-SET GOLD CHARM BRACELET

gross weight approximately: 92 grams;
length: 9in.

US\$2,000 - 3,000



56
A PAIR OF 18K GOLD EAR CLIPS
weighing approximately: 34 grams; length: 1 1/4in.

US\$800 - 1,200
To be sold without reserve

57
AN 18K GOLD FISH NECKLACE
weighing approximately: 163 grams; length: 16in.

US\$4,000 - 6,000

58^Y
A CORAL, DIAMOND, AND 18K GOLD BOMBÉ RING, TIFFANY & CO.
signed Tiffany; estimated total diamond weight: 3.00cts; gross weight approximately: 29 grams; size: 6

US\$5,000 - 7,000

59^Y
A CORAL, DIAMOND AND GOLD RING
estimated total diamond weight: 5.50cts; size: 5 1/4

US\$3,000 - 5,000

60
A PAIR OF CULTURED MABÉ PEARL, SAPPHIRE, DIAMOND AND GOLD EAR CLIPS
pearls approximately: 15.3mm; gross weight approximately: 27 grams; length: 1in.

US\$2,500 - 3,500

61
A DIAMOND AND 18K GOLD 'SPIGA' RING, BULGARI
signed Bulgari; size: 5 1/4

US\$2,500 - 3,500



62^Y
**A CORAL BEAD AND 14K GOLD
 NECKLACE WITH A CORAL, DIAMOND
 AND GOLD PENDANT**
*estimated total diamond weight: 1.00ct;
 necklace length: 32in.; pendant length: 2
 1/2in.*

US\$800 - 1,200
 To be sold without reserve

**PROPERTY OF A LOS ANGELES
 COLLECTOR**

63
**A PAIR OF DIAMOND AND 18K GOLD
 EAR CLIPS**
length: 1in.

US\$800 - 1,000
 To be sold without reserve

PROPERTY OF VARIOUS OWNERS

64
**A CULTURED PEARL, DIAMOND AND
 18K GOLD FISH BROOCH, NERSON**
*pearl approximately: 14mm; signed Nerso;
 gross weight approximately: 59 grams;
 dimensions: 2 3/4 x 2 1/2in.*

US\$1,500 - 2,000

65
**A DIAMOND AND GOLD ETERNITY
 BAND**
*estimated total diamond weight: 3.20cts;
 size: 6 3/4*

US\$2,000 - 3,000

66^Y
**A CORAL, DIAMOND AND 14K GOLD
 RING**
size: 7

US\$800 - 1,200
 To be sold without reserve



67
A DIAMOND, EMERALD AND 18K GOLD SNAKE BROOCH

estimated total diamond weight: 8.30cts; dimensions: 1 3/4 x 1 7/8in.

US\$4,000 - 6,000

68
A WHITE ENAMEL, DIAMOND, EMERALD AND 18K GOLD SNAKE RING

size: 6

US\$800 - 1,200
To be sold without reserve

PROPERTY OF A MARYLAND COLLECTION

69
A DIAMOND AND 18K GOLD NECKLACE, GREECE

estimated total diamond weight: 3.50cts; gross weight approximately: 167 grams; length: 15in., with 3in. extender

US\$4,000 - 6,000

PROPERTY OF VARIOUS OWNERS

70
A PAIR OF CITRINE, DIAMOND AND 18K GOLD EAR CLIPS, FOCHTMANN

with maker's mark; diameter: 3/4in.

US\$1,200 - 1,800

71
A FRESHWATER CULTURED PEARL, DIAMOND, RUBY AND GOLD OCTOPUS BROOCH

gross weight approximately: 39 grams; dimensions: 2 x 1 3/4in.

US\$800 - 1,200
To be sold without reserve

72
A RUBY, DIAMOND AND 18K GOLD SNAKE BANGLE

estimated total diamond weight: 2.50cts; diameter: 2 3/8in.

US\$1,800 - 2,500

73
A PAIR OF DIAMOND AND 18K GOLD EARCLIPS, ZOLATAS, GREEK

with maker's mark; length: 1in.

US\$1,200 - 1,800

74
A RUBY, DIAMOND AND 18K GOLD RING
cushion mixed-cut ruby approximately: 6.74 x 6.40 x 2.85mm; size: 9

US\$2,500 - 3,500

75
A CULTURED PEARL AND 14K GOLD BRACELET AND NECKLACE SET, D'ZEINER

necklace signed D'Zeiner; necklace length: 21in.; bracelet length: 8in.

US\$800 - 1,200
To be sold without reserve



71



72



73



74



75





76

77

76

A RUBY AND 14K GOLD BRACELET

length: 6 1/2in.

US\$1,000 - 1,500

77

A JADEITE JADE, RUBY, DIAMOND AND GOLD NECKLACE

estimated total diamond weight: 2.30cts; length: 35in.

US\$4,000 - 6,000

78

A JADEITE JADE, DIAMOND AND 18K GOLD FLOWER RING

gross weight approximately: 29 grams; dimensions: 1 1/4 x 1 1/4in.; size: 6

US\$1,000 - 1,500

79

A RUBY, SAPPHIRE, DIAMOND AND 18K GOLD SNAKE RING

size: 6

US\$1,000 - 1,500

80

A RUBY, DIAMOND AND 18K GOLD RING

size: 6 3/4

US\$1,000 - 1,500

81

A BLACK ONYX, EMERALD, RUBY, CULTURED PEARL, DIAMOND AND 14K GOLD TRIPLE STRAND BEAD NECKLACE

estimated total diamond weight: 2.00cts; length: 20in.

US\$800 - 1,200

To be sold without reserve

82

AN EMERALD, SAPPHIRE, DIAMOND AND 18K GOLD PENDANT

length: 2 1/2in.

US\$3,500 - 5,000

83

A PAIR OF RUBY, DIAMOND, AND GOLD EARRINGS AND A RING

earring length: 1 1/4in; ring size: 7

US\$1,200 - 1,800

84

A JADEITE JADE, SAPPHIRE AND 24K GOLD RING

size: 8 3/4

US\$2,500 - 3,500

Accompanied by Mason Kay report #1800126-1416, dated January 26, 2018, stating: Natural Jadeite Jade-No Dye or Polymer detected-'A'Jade.



78



79



80



81



82



83



84



85

86

87

88

89

**85
A PAIR OF MOONSTONE, DIAMOND
AND 18K GOLD EAR CLIPS, NERSO**

*signed Nerso; gross weight approximately:
38 grams; length: 1 3/8in.*

US\$1,200 - 1,800

**86
A DIAMOND AND 18K GOLD NECKLACE,
ROBILLOTI**

*signed Robilloti; gross weight approximately:
117 grams; length: 16in.*

US\$3,000 - 5,000

**87
A MOONSTONE, PINK TOURMALINE
AND 18K GOLD PENDANT, D'ZEINER**

*oval-shaped cabochon moonstone
approximately: 27.00 x 18.34mm; signed
D'Zeiner; gross weight approximately: 41
grams; length: 2in.*

US\$800 - 1,200
To be sold without reserve

**88
A CAT'S EYE MOONSTONE, DIAMOND
AND 18K GOLD RING, P. VENDOME**

*round-shaped cabochon cat's eye
moonstone approximately: 17.80 x 17.68 x
11.63mm; signed P. Vendome; gross weight
approximately: 34 grams; size: 5 3/4*

US\$1,000 - 1,500

**89
A RUBY INTAGLIO, CULTURED PEARL,
DIAMOND AND 18K GOLD BROOCH**

*gross weight approximately: 44 grams;
dimensions: 2 7/8 x 2 1/2in.*

US\$800 - 1,200
To be sold without reserve



90

90^Y

A CORAL, BLACK ONYX, PINK SAPPHIRE, SAPPHIRE AND 18K GOLD PENDANT, GIOLLI

signed Giolli; length: 6in.

US\$1,000 - 1,500

91^Y

A CORAL, DIAMOND AND GOLD RING

estimated total diamond weight: 1.75cts; gross weight approximately: 30 grams; size: 6

US\$1,500 - 2,500



91



93

92^Y

A PAIR OF CORAL AND 18K GOLD EAR CLIPS, TIFFANY & CO.

signed T & Co.; length: 1in.

US\$1,000 - 1,500

93^Y

AN EMERALD, SAPPHIRE, CORAL, DIAMOND AND GOLD FISH PENDANT

gross weight approximately: 51 grams; length: 3 1/2in.

US\$1,200 - 1,800



92



94

94

A BLACK ONYX, RUBY, EMERALD, DIAMOND AND 18K BI-COLOR GOLD BANGLE

estimated total diamond weight: 3.25cts; gross weight approximately: 111 grams; diameter: 2 1/4in.

US\$3,000 - 5,000



95
A ROCK CRYSTAL QUARTZ, DIAMOND AND 18K GOLD NECKLACE
estimated total diamond weight: 1.40cts; gross weight approximately: 201 grams; length: 15in.

US\$5,500 - 6,500

96
A KUNZITE AND GOLD PENDANT ON CHAIN
heart-shaped mixed-cut kunzite approximately: 24.90 x 23.50 x 15.31mm; total length: 21 1/2in.

US\$1,500 - 2,500

97
AN EMERALD, DIAMOND AND 18K GOLD RING
square step-cut emerald approximately: 8.59 x 8.10 x 6.12mm; estimated total diamond weight: 1.40cts; size: 6 1/4

US\$3,000 - 5,000

Accompanied by GIA report #6187826246 dated November 3, 2017, stating the emerald as: Colombian origin, with clarity enhancement (F2).

98
A CULTURED PEARL, TURQUOISE AND 18K GOLD CHARM BRACELET
gross weight approximately: 42 grams; length: 7in.

US\$800 - 1,200
 To be sold without reserve

99
A PAIR OF CHRYSOPRASE, DIAMOND AND ROSE GOLD EAR PENDANTS
estimated total diamond weight: 1.00ct; length: 1 1/2in.

US\$1,200 - 1,800

100
A PAIR OF EMERALD, DIAMOND AND 18K GOLD EAR CLIPS
estimated total diamond weight: 2.10cts; length: 3/4in.

US\$4,000 - 6,000



101



103



102



105



106



101
**A LAPIS LAZULI, DIAMOND AND GOLD
PENDANT ON A RUBBER CORD, ERNST
NOTH**

length: 18 1/4in.

US\$1,200 - 1,800

102
**A 14K BI-COLOR GOLD NECKLACE,
ITALIAN**
*weighing approximately: 191 grams; length:
18in.*

US\$2,500 - 3,500

**PROPERTY OF A MARYLAND
COLLECTION**

103
**A GEM-SET 18K GOLD RAINBOW
BRACELET**
*featuring square step-cut amethyst, citrine,
peridot, tourmaline and iolite; length: 7in.*

US\$1,500 - 2,500

104
No lot

PROPERTY OF A LADY

105
**A PAIR OF TURQUOISE, DIAMOND AND
18K GOLD EARRINGS**
*estimated total diamond weight: 1.50cts;
length: 1 1/8in.*

US\$2,500 - 3,500

**FORMERLY THE PROPERTY OF PRINCE
CHARLES OF BELGIUM AND ELISABETH
OF BAVARIA, QUEEN OF BELGIUM**

106
A SAPPHIRE AND 18K GOLD BRACELET
*gross weight approximately: 84 grams;
length: 7 1/2in.*

US\$1,500 - 2,500



PROPERTY OF VARIOUS OWNERS

107

A PAIR OF DIAMOND AND 18K GOLD 'SPIGA' HOOPS, BULGARI

signed Bulgari; gross weight approximately: 35 grams; length: 7/8in.

US\$4,500 - 5,500

108

A CERAMIC AND 18K GOLD 'CHANDRA' NECKLACE, BULGARI

signed Bulgari; gross weight approximately: 73 grams; length: 15 1/2in.

US\$6,000 - 8,000

109

A DIAMOND, RUBY AND 18K GOLD 'DAPHNE' RING, CARTIER

signed Cartier, no. 70FC020; size: 4 3/4

US\$1,200 - 1,800

FROM A PRIVATE TEXAS COLLECTION

110

A DIAMOND, LEATHER AND 18K GOLD BANGLE WRISTWATCH, CHOPARD

quartz movement; signed Chopard, no.201132 and no.5181 1; estimated total diamond weight: 2.30cts; gross weight approximately: 37 grams; circumference: 6in. (expandable)

US\$7,000 - 9,000

111

PROPERTY OF VARIOUS OWNERS

111

AN 18K TRI-COLOR GOLD TRINITY ROLLING RING, CARTIER

signed Cartier, no. AZ 7340; size: 4 3/4

US\$800 - 1,200

112

A PAIR OF DIAMOND AND 18K TRI-COLOR GOLD TRINITY "C" HOOPS, CARTIER, 1995

signed Cartier, no.38090; length: 7/8in.

US\$4,000 - 6,000



113



114



115



117



116



118

113

A BLUE SPINEL, DIAMOND AND 18K GOLD RING

cut-cornered square step-cut blue spinel approximately: 7.27 x 7.35 x 5.24mm; size: 4

US\$2,000 - 3,000

FORMERLY THE PROPERTY OF PRINCE CHARLES OF BELGIUM AND ELISABETH OF BAVARIA, QUEEN OF BELGIUM

114

A PAIR OF SAPPHIRE AND 18K GOLD CUFFLINKS, GUBELIN

signed Gubelin with maker's mark, no.610-14915-06; length: 7/16in.

US\$2,000 - 3,000

PROPERTY OF VARIOUS OWNERS

115

A SAPPHIRE, DIAMOND AND BI-COLOR GOLD YIN YANG PENDANT ON CHAIN

length: 16in.

US\$1,800 - 2,000

116

A PAIR OF SAPPHIRE AND 18K GOLD CUFFLINKS, BOUCHERON, PARIS

signed Boucheron Paris, no. 31876, with French assay marks; length: 1in.

US\$3,000 - 5,000

117

A DIAMOND AND 18K BI-COLOR GOLD CUFF, CARTIER

signed Cartier, no. 17608; gross weight approximately: 45 grams; diameter: 2 3/8in.

US\$3,000 - 5,000

118

A DIAMOND AND 14K GOLD RING

old European-cut diamond approximately: 1.45cts; size: 9 1/2

US\$2,000 - 3,000



119

**119
A CULTURED PEARL, DIAMOND AND
18K WHITE GOLD PENDANT ON CHAIN,
DSL**

*signed DSL; estimated total diamond weight:
1.50cts; gross weight approximately: 31
grams; total length: 36 1/2in.*

US\$2,800 - 3,500



120

**120
A COLORED DIAMOND, DIAMOND AND
18K BI-COLOR GOLD RING, L'AMOR**

*signed L'Amor; size: 6 (diamonds untested
for origin of color)*

US\$7,000 - 9,000



121

**121
A CULTURED PEARL, DIAMOND AND
18K ROSE GOLD RING, DSL**

*pearls approximately: 9 to 10mm; signed
DSL; size: 6 (pearls untested for origin of
color)*

US\$1,200 - 1,800



122

**122
A CULTURED PEARL, DIAMOND AND
18K WHITE GOLD BANGLE, DSL**

*pearls approximately: 12 to 13mm; signed
DSL; estimated total diamond weight: 1.00ct;
diameter: 2 1/4in.*

US\$2,800 - 3,500



123

**123
A DIAMOND AND 18K BI-COLOR GOLD
RING**

*estimated total diamond weight: 4.70cts;
size: 7 3/4*

US\$3,500 - 5,000



124

**124
A PAIR OF MORGANITE, DIAMOND AND
14K ROSE GOLD EARRINGS**

*estimated total diamond weight: 3.00cts;
length: 2 3/4in.*

US\$3,000 - 5,000



125



126



127



128



129



130

125

A DIAMOND AND GOLD BUTTERFLY BROOCH

*estimated total diamond weight: 1.25cts;
gross weight approximately: 31 grams;
dimensions: 3 x 2 1/4in.*

US\$800 - 1,200

To be sold without reserve

126 ^Y

A BLACK MOTHER-OF-PEARL, DIAMOND AND 18K GOLD RING, ROBERT WANDER FOR WINC

signed WINC; size: 6 1/4

US\$800 - 1,200

127

A DIAMOND AND 18K ROSE GOLD BANGLE

total diamond weight: 5.02cts; diameter: 2 3/8in.

US\$2,500 - 3,500

128

A PAIR OF COLORED DIAMOND AND 18K ROSE GOLD HOOP EARRINGS

*estimated total diamond weight: 5.60cts;
length: 1 1/2in. (brown diamonds untested
for origin of color)*

US\$1,800 - 2,500

129

A DIAMOND AND ROSE GOLD FLOWER RING

*estimated total diamond weight: 7.95cts;
size: 7*

US\$5,000 - 7,000

130

A DIAMOND, CULTURED PEARL AND GOLD NECKLACE

*pearls approximately: 9.0 to 9.3mm;
diamond-set ball clasp; length: 17 1/2in.*

US\$1,800 - 2,500



131

**131
A BAROQUE COLORED CULTURED PEARL NECKLACE**

pearls approximately: 8.6 to 13.4mm; length: 64 1/2in. (pearls untested for origin of color)

US\$1,000 - 1,500



132

**132
A DIAMOND, ENAMEL AND WHITE GOLD RING**

ring within a ring; estimated total diamond weight: 3.45cts; size: 6 1/2

US\$3,000 - 5,000



134

**133
A PURPLE TITANIUM, DIAMOND AND 18K WHITE GOLD FLOWER RING**

estimated total diamond weight: 2.00cts; size: 6

US\$1,500 - 2,500

**134
A SET OF SIX SAPPHIRE, DIAMOND AND 18K WHITE GOLD BANGLES**

comprising two pink sapphire, two yellow sapphire and two diamond bangles; estimated total diamond weight: 2.00cts; gross weight approximately: 64 grams; diameter: 2 5/8in.

US\$3,000 - 5,000



133



135

**135
AN AMETHYST, DIAMOND AND 18K WHITE GOLD RING**

fancy mixed-cut amethyst approximately: 12.24 x 12.13 x 8.08mm; estimated total diamond weight: 1.20cts; size: 7

US\$1,000 - 1,500



136

**136
A DIAMOND AND WHITE GOLD RING**

estimated total diamond weight: 6.30cts; size: 5 1/2

US\$3,000 - 5,000



137

A DIAMOND AND WHITE GOLD NECKLACE AND EARRING SET

estimated total diamond weight: 9.70cts; gross weight approximately: 64 grams; necklace length: 15 1/2in.; earring length: 1 3/4in.

US\$4,000 - 6,000

138

A PINK TOURMALINE, DIAMOND, PLATINUM AND 18K GOLD RING

heart-shaped mixed-cut pink tourmaline weighing: 11.85cts; size: 6

US\$1,500 - 2,500

139

A DIAMOND AND 18K WHITE GOLD SOLITAIRE RING

heart-shaped brilliant-cut diamond approximately: 1.05cts; size: 5

US\$2,000 - 3,000

140

A PINK TOURMALINE, DIAMOND AND PLATINUM RING

oval-shaped pink tourmaline cabochon weighs: 11.22cts; estimated total diamond weight: 1.00ct; size: 6 1/4

US\$1,800 - 2,500

141

A DIAMOND, PINK SAPPHIRE, ROCK CRYSTAL QUARTZ AND SILVER RING

estimated total diamond weight: 1.20cts; gross weight approximately: 25 grams; size: 6 1/2

US\$1,500 - 2,000

142

A DIAMOND AND 18K WHITE GOLD BRACELET

total diamond weight: 4.27cts; length: 7 1/4in.

US\$2,500 - 3,500



143

144

145

146

147

143

A SAPPHIRE, DIAMOND AND 18K WHITE GOLD NECKLACE WITH MATCHING EAR PENDANTS, LONDON, 2005

with English hallmarks; estimated total diamond weight: 1.60cts; collar length: 15 1/2in.; earring length: 2 1/2in.

US\$1,500 - 2,500

To be sold without reserve

Formerly from the Estate of Jackie Collins.

144

A SAPPHIRE, DIAMOND, AND PLATINUM RING

oval mixed-cut sapphire approximately: 8.38 x 6.00 x 4.04mm; no. 182; size: 6 1/2

US\$2,000 - 3,000

145

A PAIR OF DIAMOND AND 18K WHITE GOLD EAR CLIPS

estimated total diamond weight: 5.15cts; dimensions: 1 1/4 x 1 1/8in.

US\$2,500 - 3,500

Formerly from the Estate of Jackie Collins.

146

A SAPPHIRE, DIAMOND AND PLATINUM RING

estimated total diamond weight: 1.60cts; size: 6 1/4

US\$2,500 - 3,500

147

A PAIR OF SAPPHIRE, DIAMOND AND 18K WHITE GOLD EAR CLIPS

estimated total diamond weight: 3.00cts; length: 1 1/8in.

US\$3,000 - 5,000

148

A DIAMOND AND 18K WHITE GOLD PENDANT ON CHAIN

estimated total diamond weight: 2.05cts; length: 19 1/4in.

US\$1,500 - 2,000



148



149



150



151



153



152



154

149

A SAPPHIRE AND GOLD RING

cushion brilliant step-cut sapphire weighing: 6.96cts;
size: 8 3/4

US\$9,000 - 12,000

Accompanied by Gubelin report #13100204, dated October 28, 2013, stating the sapphire as : Kashmir origin, no indication of heat enhancement.

Accompanied by SSEF report #59654, stating the sapphire as: Kashmir origin, no indication of heat enhancement.

150

A PAIR OF SAPPHIRE, DIAMOND AND WHITE GOLD CUFFLINKS, PEJMANI

with maker's marks; estimated total diamond weight: 2.00cts; length: 6 3/8in.

US\$2,000 - 3,000

151

A PAIR OF DIAMOND AND 18K WHITE GOLD EARRINGS

total diamond weight: 8.45cts; length: 2 1/8in.

US\$4,000 - 6,000

152

A PAIR OF DIAMOND AND 18K WHITE GOLD EAR PENDANTS

estimated total diamond weight: 2.30cts; length: 1 3/8in.

US\$2,500 - 3,500

153

A SAPPHIRE, DIAMOND AND WHITE GOLD BAND

estimated total diamond weight: 1.30cts; size: 6

US\$1,800 - 2,500

154

A SAPPHIRE, DIAMOND, AND 9K WHITE GOLD BRACELET, FRENCH

with French import and assay marks; estimated total diamond weight: 10.00cts; gross weight approximately: 28 grams; length: 6 3/8in.

US\$3,000 - 5,000



155
A CULTURED PEARL, DIAMOND AND 18K WHITE GOLD LARIAT NECKLACE, TIFFANY & CO.
 pearls approximately: 12.5 to 13mm; *signed T&Co.*; *estimated total diamond weight: 1.40cts*; *length: 40in.*

US\$4,000 - 6,000

PROPERTY OF A LADY

156
A BAROQUE CULTURED PEARL, DIAMOND AND WHITE GOLD RING
 pearl approximately: 13.72 x 17.39mm; *estimated total diamond weight: 1.30cts*; *size: 5 1/2*

US\$1,200 - 1,800

157
A SAPPHIRE, DIAMOND AND 18K BICOLORED GOLD RING
 heart-shaped mixed-cut sapphire approximately: 11.72 x 8.72 x 5.31mm; *size: 6 1/4*

US\$2,000 - 3,000

PROPERTY OF VARIOUS OWNERS

158^Y
A LADY'S DIAMOND AND 18K WHITE GOLD STRAP WRISTWATCH
 quartz movement; *estimated total diamond weight: 3.00cts*; *case width: 1 1/8in.*; *length: 9in.*

US\$800 - 1,200

To be sold without reserve

159
A STAR SAPPHIRE, DIAMOND, PLATINUM AND 18K GOLD RING
 oval cabochon star sapphire approximately: 37.04cts; *gross weight approximately: 29 grams*; *size: 9*

US\$4,000 - 6,000

160
A COLORED CULTURED PEARL, CULTURED PEARL AND 18K WHITE GOLD NECKLACE
 pearls approximately: 8.1 to 14.0mm; *length: 35in.* (*pearls untested for origin of color*)

US\$1,000 - 1,500



161



162



163



164



165



166



161

A STAINLESS STEEL 'HAPPY SPORT' STRAP WRISTWATCH, CHOPARD

quartz movement; case, dial and buckle signed; case no. 1573655; case width: 43mm

US\$2,500 - 3,500

PROPERTY OF A LADY

162

A SAPPHIRE, DIAMOND AND PLATINUM RING

cushion mixed-cut sapphire approximately: 10.64 x 8.66 x 7.38mm; size 5 1/2

US\$2,000 - 3,000

PROPERTY OF ANOTHER OWNER

163

A DIAMOND AND PLATINUM ETERNITY BAND

estimated total diamond weight: 3.70cts; size: 5 1/2

US\$4,000 - 6,000

PROPERTY FROM A NORTHERN CALIFORNIA COLLECTOR

164

A DIAMOND AND PLATINUM RING

converts to a pendant; stamped RING-DANT, no. 8143; estimated total diamond weight: 1.54cts; size: 6 1/4

US\$800 - 1,200

To be sold without reserve

PROPERTY OF A MARYLAND COLLECTION

165

A CULTURED PEARL, DIAMOND AND 14K GOLD NECKLACE

pearls approximately 14.2 to 12.2mm; length: 19in.

US\$3,000 - 5,000

PROPERTY OF VARIOUS OWNERS

166

A STAR SAPPHIRE, DIAMOND AND PLATINUM RING

oval cabochon star sapphire weighs: 8.52cts; total diamond weight: 1.00ct; size: 5 3/4

US\$1,800 - 2,500



167
A DIAMOND AND 18K WHITE GOLD RING

size: 6 1/2

US\$2,000 - 3,000

168
A DIAMOND AND 18K WHITE GOLD 'MAILLON PANTHÈRE' BAND, CARTIER
signed Cartier, no.5515; size: 5 1/4

US\$1,500 - 2,500

169
AN 18K WHITE GOLD MULTI-CHAIN NECKLACE AND BRACELET SET

weighing approximately: 83 grams; necklace length: 17 1/2in.; bracelet length: 7in.

US\$2,000 - 3,000

170
A LADY'S DIAMOND, LAPIS LAZULI AND 18K WHITE GOLD BRACELET WRISTWATCH, PIAGET
mechanical movement; lapis lazuli dial with diamond indexes; case, dial and movement signed; case numbered 9806A6 345463; estimated total diamond weight: 0.90ct; gross weight approximately: 66 grams; case width 27mm; length 6in.

US\$3,000 - 5,000

171
A PAIR OF TOPAZ AND 18K WHITE GOLD 'PYRAMID' EAR CLIPS, BULGARI
signed Bulgari; gross weight approximately: 34 grams; dimensions: 1 x 1in.

US\$1,800 - 2,500

172
A RUBY, DIAMOND AND PLATINUM RING
oval-shaped cabochon ruby approximately: 10.67 x 8.70 x 5.59mm; size: 7 1/2

US\$1,200 - 1,800



173
A COLORED DIAMOND, DIAMOND AND 18K BI-COLOR GOLD BRACELET, LA RETNA
estimated total diamond weight: 2.80cts; length: 8in. (yellow diamonds untested for origin of color)

US\$2,500 - 3,500

174
A PAIR OF JADEITE JADE, DIAMOND AND 14K WHITE GOLD EAR STUDS
length: 1/2in.

US\$1,500 - 2,500

175
A PAIR OF JADEITE JADE, DIAMOND AND 14K WHITE GOLD EARRINGS
length: 7/8in.

US\$1,000 - 1,500

176
A JADEITE JADE, DIAMOND AND GOLD PENDANT
heart-shaped cabochon jadeite jade approximately: 16.76 x 11.66 x 2.50mm; length: 1 1/8in.

US\$800 - 1,200

177
A DIAMOND AND PLATINUM FLOWER BROOCH AND EARRING SET
estimated total diamond weight: 4.30cts; gross weight approximately: 27 grams; brooch length: 1 1/2in.; earring length: 3/4in.

US\$3,000 - 5,000

178
A PAIR OF JADEITE JADE AND WHITE GOLD EAR STUDS
diameter: 3/8in.

US\$1,000 - 1,500

179
A PAIR OF TURQUOISE, DIAMOND AND 18K WHITE GOLD EAR CLIPS, PEJMANI
signed Pejmani with maker's marks; estimated total diamond weight: 1.75cts; size: 3/4in.

US\$1,500 - 2,000



180



181

182

183



184



185

**PROPERTY FROM THE ESTATE OF A
NEW JERSEY COLLECTOR**

**180
AN ART DECO DIAMOND AND WHITE
GOLD BROOCH, CIRCA 1925**

round old european-cut diamond
approximately: 1.05cts; *estimated total
remaining diamond weight: 5.00cts; length:
2 3/8in.*

US\$4,000 - 6,000

**181
AN ART DECO DIAMOND, SAPPHIRE
AND PLATINUM RING, CIRCA 1925**

size: 7 3/4

US\$800 - 1,200
To be sold without reserve

PROPERTY OF VARIOUS OWNERS

**182
AN ART DECO SYNTHETIC SAPPHIRE,
DIAMOND AND PLATINUM BRACELET,
CIRCA 1930**

*estimated total diamond weight: 4.30cts;
length: 7in.*

US\$2,000 - 3,000

**183
AN ART DECO ONYX AND PLATINUM
BRACELET, BLACK STARR AND FROST,
CIRCA 1925**

signed B.S & F; length: 7 1/8in.

US\$800 - 1,200
To be sold without reserve

**184
AN ART DECO DIAMOND, SAPPHIRE
AND PLATINUM RING, CIRCA 1930**

size: 4

US\$1,200 - 1,800

**185
A PAIR OF EMERALD, SAPPHIRE, RUBY,
DIAMOND AND PLATINUM EARRINGS**

two round brilliant-cut diamonds: 1.04 and
1.04cts; *total remaining diamond weight:
0.80ct; length: 2in.*

US\$3,000 - 5,000



186



187



190



188



189



191

186
**A DIAMOND AND PLATINUM SOLITAIRE
PENDANT ON CHAIN, TIFFANY & CO.**
*signed Tiffany & Co; with signed box; length:
16in.*

US\$800 - 1,200

187
**AN ART DECO DIAMOND AND
PLATINUM RING , CIRCA 1930**
size: 6

US\$800 - 1,200

188
**AN AQUAMARINE, DIAMOND AND 18K
WHITE GOLD NECKLACE**
*estimated total diamond weight: 5.15cts;
gross weight approximately: 58 grams;
length: 16in.*

US\$7,000 - 9,000

189
**A PAIR OF BLUE TOPAZ, DIAMOND AND
18K WHITE GOLD EAR PENDANTS**
*estimated total diamond weight: 1.05cts;
length: 1 3/4in.*

US\$1,000 - 1,500

190
**A PAIR OF JADEITE JADE, DIAMOND
AND GOLD EAR CLIPS**
length: 7/8in.

US\$800 - 1,200
To be sold without reserve

191
**AN AQUAMARINE, DIAMOND AND
PLATINUM RING**
*rectangular step-cut aquamarine
approximately: 20.7 x 15.3 x 12.1mm; size: 8*

US\$2,000 - 3,000



192
A STAR RUBY, DIAMOND AND PLATINUM RING
 oval cabochon star ruby approximately: 13.50 x 12.00 x 9.60mm; no. 34462; size: 6 3/4

US\$1,200 - 1,800

193
A STAR RUBY, DIAMOND AND PLATINUM BRACELET
estimated total diamond weight: 1.75cts; length: 7 in.

US\$3,500 - 4,500

194
A STAR RUBY, DIAMOND AND PLATINUM RING
 oval cabochon star ruby approximately: 7.50 x 5.60 x 6.70mm; *estimated total diamond weight: 2.45cts; size: 8 3/4*

US\$4,500 - 5,500

195
A DIAMOND AND WHITE GOLD RING
estimated total diamond weight: 1.15cts; size: 3 1/4

US\$800 - 1,200
 To be sold without reserve

196
A DIAMOND AND 18K WHITE GOLD BOMBÉ RING
estimated total diamond weight: 7.55cts; size: 5 3/4

US\$3,000 - 5,000

197
A DIAMOND AND PLATINUM RING
round brilliant-cut diamond weighs: 2.81cts; estimated remaining diamond weight: 1.00ct; size: 6 1/2

US\$3,500 - 4,500



198

A DIAMOND AND PLATINUM NECKLACE

*estimated total diamond weight: 8.00cts;
gross weight approximately: 34 grams;
length: 17in.*

US\$4,000 - 6,000

199

A DIAMOND AND PLATINUM BROOCH

*estimated total diamond weight: 5.75cts;
dimension: 1 1/4 x 1 7/8in.*

US\$3,000 - 5,000

200

A DIAMOND AND PLATINUM BAND

*estimated total diamond weight: 3.00cts;
size 7*

US\$1,800 - 2,500

201

A RUBY, DIAMOND AND WHITE GOLD RING

oval mixed-cut ruby approximately: 8.62 x 6.80mm; estimated total diamond weight: 2.50cts; size: 5

US\$1,500 - 2,000

202

A RUBY, DIAMOND AND 14K WHITE GOLD ETERNITY BAND

*estimated total diamond weight: 1.70cts;
size: 6*

US\$1,000 - 2,000

203

A PURPLE SAPPHIRE, DIAMOND AND WHITE GOLD BRACELET

*estimated total diamond weight: 6.00cts;
gross weight approximately: 36 grams;
length: 5 3/4in.*

US\$3,000 - 5,000



204

PROPERTY OF AN ENGLISH LADY

204

A DIAMOND, BLUE TOPAZ AND 18K WHITE GOLD TASSLE NECKLACE

gross weight approximately: 53 grams; length: 18in.

US\$1,800 - 2,500

205

A PAIR OF AQUAMARINE, SAPPHIRE, IOLITE, DIAMOND AND 18K WHITE GOLD EAR CLIPS

length: 1 1/8in.

US\$2,000 - 3,000



205



207



206



208

206

A COLORED DIAMOND, DIAMOND AND BI-COLOR GOLD CROSS PENDANT NECKLACE

estimated total diamond weight: 12.20cts; gross weight approximately: 48 grams; length: 18in. (brown diamonds untested for origin of color)

US\$3,500 - 5,000

207

A PAIR OF DIAMOND, SAPPHIRE AND 18K WHITE GOLD EAR CLIPS, ANDREOLI

signed Andreoli, with maker's marks; estimated total diamond weight: 2.90cts; gross weight approximately: 29 grams; length: 1 1/2in.

US\$2,000 - 3,000

208

AN AQUAMARINE, ZIRCON, DIAMOND AND 18K WHITE GOLD RING

oval mixed-cut aquamarine approximately: 14.18 x 11.93 x 8.07mm; estimated total diamond weight: 1.10cts; size: 6

US\$2,000 - 3,000



209



210



211



212



213

214



209

A CULTURED PEARL, KUNZITE, DIAMOND AND WHITE GOLD NECKLACE

pearls approximately: 10.8 to 13.8mm; estimated total diamond weight: 1.00ct; gross weight approximately: 115 grams; length: 20 3/4in.

US\$3,000 - 5,000

210

A DIAMOND AND 18K WHITE GOLD RING

estimated total diamond weight: 2.95cts; size 7

US\$1,500 - 2,500

211

A RUBELLITE, DIAMOND AND 18K BI-COLOR GOLD RING

oval mixed-cut rubellite approximately 19.93 x 13.90 x 9.08mm; estimated total diamond weight: 2.75cts; size: 6 1/2

US\$15,000 - 20,000

212

A MORGANITE, PINK SAPPHIRE, DIAMOND, AND 18K GOLD RING

size: 5 1/2

US\$2,000 - 3,000

213

A DIAMOND AND 18K GOLD INITIAL PENDANT NECKLACE

estimated total diamond weight: 8.00cts; gross weight approximately: 51 grams; length: 19in.

US\$5,000 - 7,000

214

A DIAMOND AND 18K WHITE GOLD BRACELET

estimated total diamond weight: 0.95ct; gross weight approximately: 37 grams; length: 6 3/4in.

US\$3,000 - 5,000



215



216



219



217



218



220

215
A CULTURED PEARL, DIAMOND AND 18K WHITE GOLD NECKLACE AND PAIR OF EARRINGS

pearls approximately: 5.5 to 8.3mm;
estimated total diamond weight: 3.45cts;
earring length: 1 1/4in.

US\$3,000 - 5,000

216
A PERIDOT, DIAMOND AND 18K WHITE GOLD RING

center oval mixed-cut peridot approximately:
15.13 x 12.84 x 9.18mm; size: 6

US\$2,000 - 3,000

217
A PAIR OF COLORED DIAMOND, DIAMOND, CULTURED PEARL AND 18K WHITE GOLD DAY/NIGHT EARRINGS

estimated total diamond weight: 4.70cts;
length: 1 3/8in. (brown diamonds untested for origin of color)

US\$1,800 - 2,500

218
A DIAMOND AND 18K GOLD RING AND EAR CLIP SET

gross weight approximately: 30 grams;
earring length: 1in.; ring size: 6 3/4

US\$3,000 - 5,000

219
A COLORED DIAMOND, DIAMOND AND 18K WHITE GOLD RING

estimated total diamond weight: 6.70cts;
size: 5 3/4 (black diamonds untested for origin of color)

US\$1,000 - 1,500

220
A PAIR OF DIAMOND AND 18K WHITE GOLD HOOP EARRINGS

estimated total diamond weight: 2.10cts;
length: 1 1/16in.

US\$2,000 - 3,000



221

222



223



224



225



226

221

A PAIR OF DIAMOND AND 18K GOLD EAR CLIPS

estimated total diamond weight: 2.80cts; gross weight approximately: 25 grams; length: 1 3/8in.

US\$1,500 - 2,000

222

A CULTURED PEARL, CITRINE AND GOLD NECKLACE

pearls approximately: 11.3 to 12.6mm; gross weight approximately: 90 grams; length: 15 1/2in.

US\$3,000 - 5,000

223

A COLORED DIAMOND AND 18K GOLD RING

estimated total diamond weight: 10.00cts; size: 6 (brown diamonds untested for origin of color)

US\$2,500 - 3,000

224

A COLORED DIAMOND, DIAMOND AND 18K WHITE GOLD RING

estimated total diamond weight: 6.50cts; size: 6 1/4 (brown diamonds untested for origin of color)

US\$1,500 - 2,500

225

A SUITE OF THREE 18K TRI-COLOR GOLD CUFFS, FOPE

signed FOPE, with maker's marks; estimated total diamond weight: 1.55cts; gross weight approximately: 108 grams; diameter: 2 1/4

US\$3,000 - 5,000

226

A DIAMOND AND 18K BI-COLOR GOLD BRACELET

gross weight approximately: 38 grams; length: 7 1/2in.

US\$1,500 - 2,000



227

228



229

PROPERTY OF VARIOUS OWNERS

227

AN 18K GOLD RING, DAVID WEBB

signed WEBB, weighing approximately: 31 grams; size: 6

US\$2,000 - 3,000

228

A COLLECTION OF TURQUOISE AND 14K GOLD BEAD NECKLACES

comprising seven necklaces; length: 35in.

US\$800 - 1,200

To be sold without reserve

229.

A TURQUOISE AND 18K GOLD BRACELET, STEPHEN DWECK

signed Stephen Dweck; gross weight approximately: 57 grams; length: 7 1/2in.

US\$800 - 1,200

To be sold without reserve

230

A TURQUOISE, DIAMOND AND GOLD RING

estimated total diamond weight: 1.00ct; size: 6 1/2

US\$1,000 - 1,500

231

A PAIR OF AMETHYST AND 18K GOLD EAR CLIPS, BUCCELLATI

signed Buccellati, no.3065; length: 8in.

US\$3,000 - 5,000

232

A TURQUOISE, CULTURED PEARL, AMETHYST, PETRIFIED PALM WOOD AND 18K GOLD PENDANT/BROOCH AND EAR CLIP SET

brooch dimensions: 2 3/4 x 2 1/2in.; earring length: 1 3/4in.

US\$1,000 - 1,500

233^Y

A CORAL BEAD AND 18K GOLD PENDANT NECKLACE, D'ZEINER

signed D'Zeiner; length: 22 1/2in.

US\$1,500 - 2,500

234

A TURQUOISE AND 18K GOLD RING AND PAIR OF EARRINGS

earring length: 1in.; ring size: 5 1/2

US\$800 - 1,200

To be sold without reserve



230



231



233



232



234





235
A PAIR OF JADEITE JADE, DIAMOND AND GOLD EARRINGS
estimated total diamond weight: 1.35cts; length: 1 1/2in.

US\$1,200 - 1,800

236^Y
A CORAL, STONE AND 14K GOLD PENDANT NECKLACE, D'ZEINER
signed D'Zeiner; length: 18in.

US\$1,000 - 1,500

237^Y
A CORAL AND GOLD FLOWER RING
dimensions: 2 x 1 3/4in; size: 6 1/2

US\$1,000 - 1,500
 To be sold without reserve

PROPERTY OF A LOS ANGELES COLLECTOR

238
A JADEITE JADE, DIAMOND AND GOLD RING

oval-shaped cabochon jadeite jade approximately: 20.04 x 14.03mm; *estimated total diamond weight: 3.50cts; size: 7*

US\$5,000 - 7,000

Accompanied by Mason Kay report #1800126-1688, dated January 26, 2018, stating: Natural Jadeite Jade- No Dye or Polymer detected-'A' Jade.

PROPERTY OF A LADY

239^Y
A PAIR OF CORAL, JADEITE JADE, DIAMOND AND 18K BI-COLOR GOLD EAR PENDANTS
length: 2 3/4in.

US\$3,000 - 5,000



240

240^Y

A PAIR OF CORAL, ONYX, DIAMOND AND 18K GOLD EAR PENDANTS

length: 3in.

US\$1,500 - 2,000

PROPERTY OF A LOS ANGELES COLLECTOR

241^Y

A CORAL, ONYX, DIAMOND AND 14K GOLD NECKLACE

gross weight approximately: 67 grams; length: 32in.

US\$800 - 1,200

To be sold without reserve



241

242^Y

A CORAL BEAD NECKLACE

coral beads approximately: 4.6 to 15.8mm; with metal clasp; length: 16in.

US\$2,500 - 3,500

243

A CULTURED PEARL, EMERALD, SAPPHIRE AND 14K GOLD RING

size: 5 1/4

US\$800 - 1,000

To be sold without reserve



243



242



244



245

PROPERTY OF ANOTHER OWNER

244

A LAVENDER JADEITE JADE, DIAMOND AND 18K GOLD RING

oval cabochon jadeite jade approximately: 25.33 x 18.39 x 6.72mm; estimated total diamond weight: 4.35cts; size: 7

US\$3,000 - 5,000

See department for MASON KAY report

PROPERTY OF A LADY

245

A JADEITE JADE, DIAMOND AND 18K GOLD PENDANT

oval cabochon jadeite jade approximately: 19.68 x 7.09 x 2.56mm; length: 2 1/2in.

US\$1,500 - 2,000



246

247

250

248

249

251

PROPERTY FROM A NEW YORK COLLECTOR

246^Y
A PAIR OF BRONZE COIN, DIAMOND, PINK TOURMALINE, MOTHER-OF-PEARL AND 18K GOLD EAR CLIPS
estimated total diamond weight: 1.25cts; length: 1in.

US\$800 - 1,200

247
A CITRINE, DIAMOND, BLACK ONYX AND 18K GOLD NECKLACE
estimated total diamond weight: 8.80cts; gross weight approximately: 147 grams; length: 13 1/2in.

US\$7,000 - 9,000

248
A PAIR OF GEM-SET, DIAMOND AND 18K GOLD EAR CLIPS
estimated total diamond weight: 1.50cts; length: 1 7/8in.

US\$3,000 - 5,000

249
A BLUE TOPAZ, DIAMOND AND 18K WHITE GOLD RING
size: 6 1/2

US\$700 - 900

250
A DIAMOND AND 18K GOLD RING
estimated total diamond weight: 1.75cts; size: 6 1/4

US\$800 - 1,200
 To be sold without reserve

251
A PAIR OF CITRINE AND 18K BI-COLOR GOLD EAR CLIPS, MARINA B.
signed Marina B., Italy, no. A1999, with signed box; length: 7/8in.

US\$1,000 - 1,500



252



253



254



255



256



257

252

A PAIR OF DIAMOND AND GOLD EAR CLIPS

*estimated total diamond weight: 3.50cts;
length: 1 1/2in.*

US\$1,000 - 1,500

253

A DIAMOND, RUBY AND BI-COLOR GOLD RING

size: 5 1/2

US\$400 - 600

To be sold without reserve

254

TWO 18K GOLD FLOWER RINGS, ANGELA CUMMINGS, CIRCA 1992

signed Cummings; size: 6 and 4 1/4

US\$600 - 700

To be sold without reserve

255

A COMPANION PAIR OF DIAMOND, SAPPHIRE, RUBY, EMERALD AND GOLD BRACELETS

*estimated total diamond weight: 2.50cts;
gross weight approximately: 36 grams;
lengths: 6 7/8in.*

US\$1,000 - 1,500

PROPERTY OF VARIOUS OWNERS

256

A SAPPHIRE, DIAMOND, PLATINUM AND 18K GOLD RING

*estimated total diamond weight: 1.10cts;
size: 6 1/4*

US\$2,500 - 3,500

257

A SAPPHIRE, DIAMOND AND GOLD BROOCH

length: 1 7/8in.

US\$800 - 1,200

To be sold without reserve



258



259



260



261



262



263



265



267



264



266





268

258

**A SAPPHIRE AND PLATINUM RING,
BOUCHERON, PARIS**

oval cabochon sapphire approximately: 9.42 x 9.18 x 6.79mm; *signed Boucheron Paris, no. 9607, with French assay marks; size: 8*

US\$4,000 - 6,000

259

A DIAMOND AND PLATINUM BAND

estimated total diamond weight: 1.60cts; size: 6

US\$800 - 1,200

To be sold without reserve

260

**A PAIR OF CAT'S EYE CHRYSOBERYL,
DIAMOND AND WHITE GOLD EAR
PENDANTS**

length: 1 1/4in.

US\$3,000 - 5,000

**FORMERLY THE PROPERTY OF PRINCE
CHARLES OF BELGIUM AND ELISABETH
OF BAVARIA, QUEEN OF BELGIUM**

261

**A SILVER CIGARETTE CASE WITH
TWO PAIRS OF SILVER AND GOLD
CUFFLINKS, WOLFERS FRÈRES**

with maker's marks; with two signed boxes; gross weight approximately: 197 grams; cigarette case dimensions: 4 1/8 x 3 1/4in.

US\$1,200 - 1,800

PROPERTY OF VARIOUS OWNERS

262

**A CAT'S EYE CHRYSOBERYL, DIAMOND
AND PLATINUM RING**

oval cabochon cat's eye chrysoberyl weighs: 4.83cts; *size: 6 1/2*

US\$1,500 - 2,500

263

A DIAMOND AND PLATINUM RING

old mine-cut diamond approximately: 2.45cts; *size: 8 3/4*

US\$4,500 - 5,500

264

**A PAIR OF DIAMOND AND WHITE GOLD
EARRINGS**

estimated total diamond weight: 2.00cts; length: 1 3/4in.

US\$800 - 1,200

To be sold without reserve

265

**A CAT'S EYE CHRYSOBERYL, DIAMOND
AND 14K WHITE GOLD RING**

oval cabochon cat's eye chrysoberyl approximately: 6.48 x 10.12 x 7.74mm; *estimated total diamond weight: 1.50cts; size: 6 1/2*

US\$2,500 - 3,500

266

**A PAIR OF CULTURED PEARL, DIAMOND
AND BLACKENED STEEL EAR CLIPS,
MARSH & CO.**

pearls approximately 6.4mm; *unsigned, attributed to Marsh & Co.; length: 7/8in.*

US\$1,000 - 1,500

To be sold without reserve

267

**A STAINLESS STEEL AND GOLD
'SANTOS' BRACELET WRISTWATCH
WITH DATE AND MOONPHASE,
CARTIER**

quartz movement; *case, dial, and movement signed; case number 119901 01273; case width: 27mm; length: 7in.*

US\$2,000 - 3,000

268

**A FABRIC AND GEM-SET CLUTCH, VAN
CLEEF AND ARPELS, CIRCA 1960**

signed Van Cleef & Arples, no.16757; dimensions: 5 x 7 7/8in.

US\$3,000 - 5,000

To be sold without reserve

This lot is being offered by Goodwill Southern Los Angeles County (SOLAC). Since 1929 Goodwill SOLAC's mission has been to transform lives through the power of work. Serving individuals with barriers to employment, as well as businesses, by providing education, training, work experience and job placement services in a culturally diverse and growing community.



269

A DIAMOND AND 14K WHITE GOLD BRACELET

no. 1843-312; estimated total diamond weight: 15.20cts; gross weight approximately: 29 grams; length: 7 1/4in.

US\$8,000 - 10,000

270

A CITRINE, TSAVORITE GARNET, DIAMOND AND 14K GOLD BRACELET

length: 7 1/2in.

US\$800 - 1,200

To be sold without reserve

271

A RUBY, DIAMOND AND 18K WHITE GOLD RING

oval mixed-cut ruby weighs: 3.02cts; estimated total diamond weight: 1.60cts; size: 7 1/2

US\$5,000 - 7,000

270

271

272

274

Accompanied by GRS report #GRS2016-072148, dated August 2, 2016, stating: Mozambique origin with no indications of heat enhancement.

272

A FANCY YELLOW DIAMOND, DIAMOND AND PLATINUM RING

cut-cornered rectangular-shaped modified brilliant-cut Natural Fancy Yellow diamond weighs: 1.12cts; estimated total diamond weight: 1.00ct; size: 6 1/2

US\$2,500 - 3,500

Accompanied by GIA report #2155554172, dated August 12, 2013, stating the diamond as: Natural Fancy Yellow.

273

A PAIR OF EMERALD, DIAMOND AND PLATINUM EAR PENDANTS

estimated total diamond weight: 5.75cts; length: 2 1/8in.

US\$8,000 - 10,000

Accompanied by AGL report # 1087711, dated October 13, 2017, stating the emeralds as: Colombian origin, indications of minor, traditional clarity enhancement.

274

AN EMERALD, DIAMOND AND PLATINUM BAND

size: 6

US\$1,500 - 2,500



275

**275
A DIAMOND AND 18K BI-COLOR GOLD
NECKLACE**

*estimated total diamond weight: 2.85cts;
length: 18 1/2in.*

US\$1,800 - 2,500



276



277



278

**277
AN EMERALD, DIAMOND, 18K GOLD
AND PLATINUM RING**

*heart-shaped mixed-cut emerald
approximately: 6.92 x 8.04 x 5.47mm; size:
5 3/4*

US\$2,000 - 3,000

*Accompanied by GIA report #5182902918,
dated December 6, 2017, stating: Colombia
origin, clarity enhanced (F2).*

**278
A COLORED DIAMOND, DIAMOND AND
PLATINUM RING**

*oval brilliant-cut yellow diamond
approximately: 0.55ct; estimated remaining
total diamond weight: 1.70cts; size: 8 1/4
(yellow diamond untested for origin of color)*

US\$1,800 - 2,500



279



280



**279
A DIAMOND AND 14K BI-COLOR GOLD
NECKLACE**

*no. 0063-301; estimated total diamond
weight: 13.35cts; gross weight
approximately: 33 grams; length: 32in.*

US\$6,000 - 8,000

**280
A DIAMOND AND 18K BI-COLOR GOLD
LONG CHAIN NECKLACE**

*estimated total diamond weight: 5.30cts;
length: 60in.*

US\$2,500 - 3,500



281
A COLORED CULTURED PEARL, DIAMOND AND 18K GOLD NECKLACE
 pearls approximately: 10.00 to 13.6mm;
 length: 16in. (black pearls untested for origin of color)

US\$3,000 - 5,000

282
A DIAMOND AND WHITE GOLD SPRAY BROOCH
 estimated total diamond weight: 4.25cts;
 length: 1 3/4in.

US\$1,200 - 1,800

283
A PAIR OF COLORED CULTURED PEARL, DIAMOND AND WHITE GOLD EAR CLIPS
 pearls approximately: 12.18mm; estimated total diamond weight: 2.30cts; length: 13/16in. (black pearls untested for origin of color)

US\$2,000 - 3,000

284
A LADY'S DIAMOND AND PLATINUM BRACELET WRISTWATCH, HAMILTON
 mechanical movement; dial and movement signed; estimated total diamond weight: 1.40cts; gross weight approximately: 35.9 grams; case width: 15mm; length: 6 5/8in.

US\$800 - 1,200
 To be sold without reserve

285
A PAIR OF COLORED CULTURED PEARL, DIAMOND AND 18K WHITE GOLD EAR PENDANTS
 pearls approximately: 11.7 to 15.0mm; estimated total diamond weight: 1.20cts; length: 2in. (pearls untested for origin of color)

US\$1,500 - 2,500



286

**286
A PAIR OF DIAMOND AND PLATINUM
EAR PENDANTS**

*estimated total diamond weight: 1.70cts;
gross weight approximately: 26 grams;
length: 2in.*

US\$2,000 - 3,000



287

**287
AN EMERALD, DIAMOND AND
PLATINUM BRACELET**

*estimated total diamond weight: 2.00cts;
gross weight approximately: 56 grams;
length: 7in.*

US\$5,000 - 7,000



288



290

**288
A PAIR OF EMERALD, DIAMOND AND
PLATINUM EAR CLIPS**

*estimated total diamond weight: 1.00ct;
length: 7/8in.*

US\$3,000 - 5,000

**289
A PAIR OF JADEITE JADE, DIAMOND
AND 18K GOLD EAR CLIPS**

length: 7/8in.

US\$3,000 - 5,000



291

**290
AN EMERALD, DIAMOND AND
PLATINUM RING**

*octagonal step-cut emerald: 1.85cts; size:
5 3/4*

US\$1,500 - 2,500

*Accompanied by GIA report #5182578245
dated July 25, 2017, stating the Emerald
as: Colombian origin with minor clarity
enhancement (F1).*

**291
A CARVED ROCK CRYSTAL QUARTZ,
DIAMOND AND WHITE GOLD RING**

*estimated total diamond weight: 1.00ct; size:
6*

US\$800 - 1,200

To be sold without reserve



292



293



294



295



296

PROPERTY OF A WEST COAST COLLECTOR

292^Y
TWO CORAL BEAD, TURQUOISE AND SILVER NECKLACES

length: 15in. and 16 1/2in.

US\$1,000 - 1,500

PROPERTY FROM A NORTHERN CALIFORNIA COLLECTOR

293
A SAPPHIRE, DIAMOND AND PLATINUM RING

cut-cornered rectangular step-cut sapphire approximately: 7.10 x 5.00 x 3.30mm; size: 4

US\$1,000 - 1,500

To be sold without reserve

PROPERTY OF A WEST COAST COLLECTOR

294
A TURN OF THE CENTURY DIAMOND AND SILVER-TOPPED GOLD BROOCH, CIRCA 1900

estimated total diamond weight: 2.10cts; length: 1 1/4in.

US\$1,500 - 2,500

PROPERTY FROM A NORTHERN CALIFORNIA COLLECTOR

295
A RUBY, DIAMOND AND GOLD RING

oval mixed-cut ruby approximately: 6.50 x 5.90 x 2.99mm; estimated total diamond weight: 1.20cts; size: 4

US\$1,000 - 1,500

To be sold without reserve

PROPERTY OF ANOTHER OWNER

296
A LADY'S BLACK ENAMEL AND 14K GOLD CONCEALED DIAL BRACELET WRISTWATCH

mechanical movement; with extra tassels; dial signed Geneva; case signed Deauville Watch Co.; gross weight approximately: 71 grams; diameter: 33mm; length: 7 1/4in.

US\$800 - 1,200

To be sold without reserve



PROPERTY OF A WEST COAST COLLECTOR

297

A DIAMOND AND PLATINUM BRACELET

estimated total diamond weight: 20.00cts; gross weight approximately: 60 grams; length: 7 1/2in.

US\$10,000 - 15,000

298

A DIAMOND, CULTURED PEARL AND WHITE GOLD NECKLACE

estimated total diamond weight: 2.85cts; gross weight approximately: 27 grams; length: 16 1/2in.

US\$1,800 - 2,500

299

A LADY'S ART DECO DIAMOND AND PLATINUM BRACELET WRISTWATCH, TIFFANY & CO., CIRCA 1925

mechanical movement; dial signed Tiffany, movement signed C.H. Meylan; estimated total diamond weight: 2.50cts; length: 7in.

US\$1,500 - 2,000

300

A DIAMOND AND PLATINUM BROOCH

estimated total diamond weight: 1.60cts; length: 3/4in.

US\$1,200 - 1,800

301

A DIAMOND AND PLATINUM-TOPPED GOLD BROOCH, CIRCA 1910

estimated total diamond weight: 3.75cts; length: 2in.

US\$2,000 - 3,000

302

A DIAMOND, ENAMEL AND 18K GOLD VIOLIN BROOCH

length: 3 1/4in.

US\$3,000 - 5,000



**PROPERTY FROM A PARADISE VALLEY,
ARIZONA, ESTATE**

303
A DIAMOND AND 14K GOLD DRESS SET
cufflink length: 5/8in.

US\$800 - 1,200

304
**AN AMETHYST, CULTURED PEARL AND
14K GOLD NECKLACE**
gross weight approximately: 45 grams;
length: 18in.

US\$800 - 1,200

305
**A GEM-SET 18K GOLD DOG BROOCH
WITH A PAIR OF DIAMOND AND 14K
GOLD EARRINGS**

gross weight approximately: 31 grams;
brooch length: 3 1/4in.; earring length: 1
1/8in.

US\$800 - 1,200

306
**A DIAMOND, PLATINUM AND 18K GOLD
RING, OSCAR HEYMAN BROTHERS**
with maker's mark, no.J7446; estimated total
diamond weight: 1.50cts; size: 4 1/2

US\$2,000 - 3,000

307
**A DEMANTOID GARNET, DIAMOND AND
18K GOLD RING, MOBA**
signed MOBA; size: 5 3/4

US\$800 - 1,200

308
**AN 18K GOLD BRACELET WITH A 14K
GOLD CHARM**
weighing approximately: 68 grams; length:
7 1/4in.

US\$1,700 - 2,500



309

309
A SEMI-BLACK OPAL, DIAMOND AND 14K WHITE GOLD PENDANT ON CHAIN
 pear-shaped cabochon opal approximately:
 16.70 x 11.80 x 4.00mm; length: 16 1/4in.

US\$1,500 - 2,000



310

310
AN AQUAMARINE AND WHITE GOLD PENDANT ON PLATINUM CHAIN
 carved briolette aquamarine approximately:
 50.00 x 24.00 x 15.00mm; chain length:
 18in.

US\$2,500 - 3,500



311

311
A PAIR OF DIAMOND AND PLATINUM FLOWER EAR CLIPS
 estimated total diamond weight: 7.50cts;
 length: 1in.

US\$4,000 - 6,000



313

313
A TANZANITE, DIAMOND AND 14K WHITE GOLD RING
 oval mixed-cut tanzanite approximately:
 10.70 x 8.57 x 6.79mm; size: 6

US\$800 - 1,200



314

312
A MORGANITE, DIAMOND AND 18K WHITE GOLD RING
 oval mixed-cut morganite approximately:
 19.53 x 17.23 x 11.40mm; size: 4, with ring
 sizer.

US\$4,000 - 6,000

314
A DIAMOND AND 18K WHITE GOLD RING
 round brilliant-cut diamond weighing:
 1.25cts; size: 6 1/4

US\$3,000 - 5,000

Accompanied by GIA report #2185823320,
 dated October 18, 2017, stating: E color, I1
 clarity.



PROPERTY OF VARIOUS OWNERS

315 A CITRINE, DIAMOND AND PALLADIUM PENDANT

cut-cornered rectangular mixed-cut citrine approximately: 21.36 x 17.60 x 11.51mm; length: 1 5/8in.

US\$800 - 1,200
To be sold without reserve

316 AN ART DECO EMERALD, DIAMOND, AND PLATINUM BRACELET, CIRCA 1930

cut-cornered rectangular-shaped step-cut emerald approximately: 7.60 x 6.80 x 3.73mm; estimated total diamond weight: 3.40cts; length: 6in.

US\$3,000 - 4,000

317 A DIAMOND AND PLATINUM BRACELET *no.83164; estimated total diamond weight: 7.20cts; gross weight approximately: 29 grams; length: 7 1/8in.*

US\$4,000 - 6,000

PROPERTY FROM A PARADISE VALLEY, ARIZONA, ESTATE

318 A JADEITE JADE, DIAMOND AND PLATINUM RING, MARSH'S

rectangular tablet-cut jadeite jade approximately: 16.51 x 10.95mm; signed Marsh's; size: 5 3/4

US\$2,000 - 3,000

Accompanied by Mason Kay report #180126-691, Dated January 26, 2018, stating: Natural Jadeite Jade-No Dye or Polymer Detected-'A' Jade.

PROPERTY OF ANOTHER OWNER

319 A DIAMOND AND PLATINUM RING emerald-cut diamond approximately: 2.65cts; size: 6

US\$3,500 - 4,500

PROPERTY FORMERLY FROM A NEW YORK SOCIALITE

320 A DIAMOND AND 18K WHITE GOLD STRAP WRISTWATCH, FRED LEIGHTON quartz movement; with deployant clasp; case and dial signed, case no. CO/03/5345; estimated total diamond weight: 1.20cts; case width: 28mm; length: 6 1/2in.

US\$2,500 - 3,500

PROPERTY FROM A PARADISE VALLEY, ARIZONA, ESTATE

321 A JADEITE JADE, DIAMOND AND SILVER-TOPPED GOLD NECKLACE jade beads approximately: 5.1 to 11.9mm; with fitted box; gross weight approximately: 158 grams; length: 25in.

US\$3,500 - 5,000

Accompanied by Mason Kay report #180126-15770, dated January 26, 2018, stating: Natural Jadeite Jade-No Dye or Polymer Detected- 'A' Jade.

PROPERTY FROM THE ESTATE OF A NEW JERSEY COLLECTOR

322 A DIAMOND AND BI-COLOR GOLD RING estimated total diamond weight: 2.40cts; size: 8 1/2

US\$1,000 - 1,500
To be sold without reserve

FORMERLY THE PROPERTY OF PRINCE CHARLES OF BELGIUM AND ELISABETH OF BAVARIA, QUEEN OF BELGIUM

323 A DIAMOND, CULTURED PEARL, BEAD AND GOLD PENDANT ON A SILVER CHAIN

length: 17 3/4in.

US\$800 - 1,200
To be sold without reserve

324 AN 18TH CENTURY DIAMOND, SILVER AND GOLD RING, CIRCA 1790 size: 7 1/2

US\$800 - 1,200

325 AN 18TH CENTURY DIAMOND AND GOLD NAVETTE RING, CIRCA 1790 size: 7 1/2

US\$1,000 - 1,500

PROPERTY OF VARIOUS OWNERS

326 A DIAMOND AND 18K WHITE GOLD RING old-European diamond approximately: 2.20cts; size: 6 1/4

US\$4,000 - 6,000

327 A BLACK OPAL, DIAMOND, DEMANTOID GARNET AND PLATINUM BROOCH, WALTON & CO., CIRCA 1915

oval cabochon black opal approximately 27 x 15.5 x 5.7mm; signed Walton & Co.; dimensions: 1 7/8 x 7/8in.

US\$3,000 - 5,000



321



322



323



324



325



326



327



328



330



331



332



333



PROPERTY OF A LOS ANGELES COLLECTOR

328

AN AMETHYST AND 14K GOLD RING

oval cabochon amethyst approximately: 11.14 x 8.92 x 5.44mm; size: 6

US\$800 - 1,200

To be sold without reserve

PROPERTY OF VARIOUS OWNERS

329^Y

A COLLECTION OF CORAL AND GOLD NECKLACES

comprising three coral bead necklaces; lengths: 17in., 19in. and 20in.

US\$800 - 1,200

To be sold without reserve

330

A YELLOW SAPPHIRE, DIAMOND AND GOLD RING

oval mixed-cut yellow sapphire approximately: 13.31 x 10.10 x 5.77mm; size: 7

US\$2,000 - 3,000

PROPERTY OF A LADY

331

A RUBY, EMERALD, DIAMOND AND 18K GOLD FLOWER RING

round brilliant-cut diamond approximately: 0.95ct; size: 6 1/2

US\$3,000 - 5,000

PROPERTY OF VARIOUS OWNERS

332

AN EMERALD, DIAMOND AND GOLD RING

oval cabochon emerald approximately: 18.24 x 12.63 x 7.91mm; estimated total diamond weight: 2.40cts; size: 6 3/4

US\$4,000 - 6,000

333^Y

A GEM-SET 14K GOLD SLIDE BRACELET AND EAR CLIP SET

gross weight approximately: 65 grams; bracelet length: 7 1/4in.; earring length: 1in.

US\$800 - 1,200

To be sold without reserve



334



335



338



336



337



339

PROPERTY OF A LOS ANGELES COLLECTOR

**334
A RETRO 14K GOLD NECKLACE, CIRCA 1945**

weighing approximately: 64 grams; length: 15in.

US\$1,000 - 1,500

PROPERTY FROM A PARADISE VALLEY, ARIZONA, ESTATE

**335
AN AQUAMARINE, DIAMOND AND GOLD RING**

cut-cornered rectangular step-cut aquamarine approximately: 16.39 x 12.43 x 9.52mm; size 5 3/4

US\$2,000 - 3,000

PROPERTY OF ANOTHER OWNER

**336
A LADY'S DIAMOND AND 18K GOLD 'HAPPY DIAMONDS' STRAP WRISTWATCH, CHOPARD**

metal Chopard buckle; case and dial signed; no. 20/4305, 229664, 5198; with certificate of authenticity; case dimensions: 30 x 20mm, length: 8in.

US\$1,000 - 1,500

PROPERTY OF A LOS ANGELES COLLECTOR

**337
A CITRINE AND DIAMOND RING**

rectangular mixed-cut citrine approximately: 7.26 x 11.39 x 4.93mm; size: 9

**US\$1,000 - 1,500
To be sold without reserve**

**338
A SAPPHIRE, DIAMOND AND GOLD RING**

oval mixed-cut sapphire approximately: 8.90 x 7.81 x 4.72mm; size: 9

US\$1,200 - 1,800

**339
A SAPPHIRE, DIAMOND AND 14K GOLD BROOCH AND EAR CLIP SET, TOBIAS**

signed Tobias; brooch length: 1 1/4in.; earring length: 7/8in.

US\$1,000 - 1,200



340

341

342

343

PROPERTY OF VARIOUS OWNERS

340^Y

A CORAL AND 18K GOLD SUITE

comprising a necklace, bracelet and earrings;
necklace length: 24 1/2in.; bracelet length: 7
1/4in.; ring size: 7 1/4

US\$1,200 - 1,800

341^Y

A COLLECTION OF THREE PAIRS OF GEM-SET METAL AND GOLD EAR PENDANT DROPS

estimated total diamond weight: 8.50cts;
(black pearls untested for origin of color)

US\$800 - 1,200

To be sold without reserve

342

A JADEITE JADE, DIAMOND AND 14K GOLD NECKLACE AND BRACELET

necklace length: 15 1/2in.; bracelet length:
6 1/2in.

US\$1,000 - 1,500

To be sold without reserve

Accompanied by Mason-Kay reports
#161025-2 and 161025-3, dated October
25, 2016, stating: Natural Jadeite Jade - No
Dye or Polymer Detected - 'A' Jade

343

A PAIR OF JADEITE JADE AND GOLD BRACELETS

length: 7in.

US\$4,000 - 6,000

Accompanied by Mason Kay report
#180215-568, dated February 15, 2018,
stating: Natural Jadeite Jade-No Dye or
Polymer detected-'A' Jade

**FORMERLY THE PROPERTY OF PRINCE
CHARLES OF BELGIUM AND ELISABETH
OF BAVARIA, QUEEN OF BELGIUM**



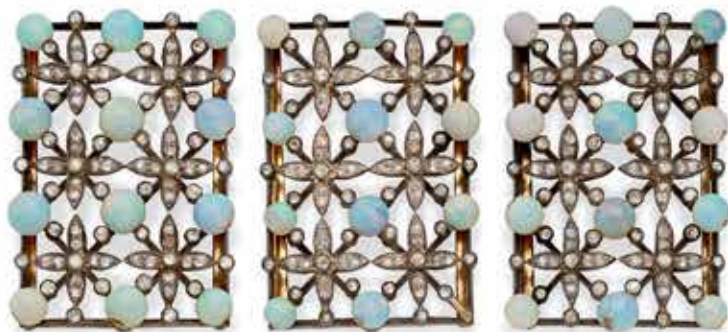
344



345



346



347



348



349

344
A CULTURED PEARL, DIAMOND AND PLATINUM NECKLACE
pearls approximately: 3.3 to 7.9mm; length: 24 1/2in.

US\$1,000 - 2,000
To be sold without reserve

Accompanied by GIA report # 5182956507, dated January 8, 2018, stating the pearl as: Cultured Saltwater.

PROPERTY OF VARIOUS OWNERS

345
A CULTURED PEARL, COLORED DIAMOND, DIAMOND AND 18K WHITE GOLD NECKLACE AND PAIR OF EARRINGS
estimated total diamond weight: 1.30cts; necklace length: 17in.; earring length: 3/4in. (coloured diamond untested for origin of color)

US\$1,000 - 2,000

346
A SAPPHIRE, DIAMOND AND SILVER-TOPPED GOLD HINGED BANGLE
gross weight approximately: 51 grams; diameter: 2 3/8in.

US\$4,000 - 6,000

FORMERLY THE PROPERTY OF PRINCE CHARLES OF BELGIUM AND ELISABETH OF BAVARIA, QUEEN OF BELGIUM

347
A COLLECTION OF DIAMOND, OPAL AND SILVER-TOPPED GOLD FRAGMENTS
dimensions: 1 1/2 x 1in.

US\$1,200 - 1,800

PROPERTY OF A LOS ANGELES COLLECTOR

348
A DIAMOND AND GOLD STICK PIN
length: 2in.

US\$1,000 - 1,200

PROPERTY OF ANOTHER OWNER

349
THREE COLORED DIAMOND LONG NECKLACES
comprising one black diamond and two brown diamond necklaces; gross weight approximately: 74 grams; length: 53in. (black and brown diamonds untested for origin of color)

US\$800 - 1,200
To be sold without reserve



PROPERTY OF A LOS ANGELES COLLECTOR

**350
A COLLECTION OF JADEITE JADE AND GOLD JEWELRY**

comprising two rings and one bangle;
bracelet diameter: 2 1/8in.; ring sizes: 4 and 6 3/4

US\$1,000 - 1,500

Accompanied by Mason Kay report #1800126-534, dated January 26, 2018, stating: Natural Jadeite Jade-No Dye or Polymer detected-'A' Jade.

Accompanied by Mason Kay report #1800126-1005, dated January 26, 2018, stating: Natural Jadeite Jade-No Dye or Polymer detected-'A' Jade.

Accompanied by Mason Kay report #1800126-2815, dated January 26, 2018, stating: Natural Jadeite Jade-No Dye or Polymer detected-'A' Jade.

**351
A GEM-SET AND GOLD CHARM BRACELET**

gross weight approximately: 127 grams; length: 8in.

US\$1,500 - 2,000

**352
AN AQUAMARINE AND 14K GOLD RING**
rectangular cushion mixed-cut aquamarine
approximately: 20.33 x 15.08 x 10.91mm;
size: 5 3/4

US\$1,200 - 1,800

**353
AN 18K GOLD NECKLACE WITH A BRONZE ANCIENT ROMAN COIN AND 18K GOLD PENDANT**
coin accompanied by a letter of authenticity; gross weight approximately: 43 grams; length: 17 3/4in.

US\$1,000 - 1,500



354

355

356

357

354

A RUBY, DIAMOND AND 18K GOLD LION RING, ILIAS LALAOUNIS, GREEK

with maker's mark; size: 4 1/4

US\$800 - 1,200

356

AN 18K GOLD BANGLE

weighing approximately: 47 grams; diameter: 2 1/4in.

US\$1,000 - 1,200

357

AN 18K GOLD BRACELET

weighing approximately: 37 grams; length: 8in.

US\$800 - 1,000

355

A LAPIS LAZULI AND 18K GOLD SUITE, ILIAS LALAOUNIS, GREEK

comprising a necklace, bangle and ring; signed Ilias Lalaounis with maker's mark; with box and papers; gross weight approximately: 75 grams; necklace length: 15in.; bracelet diameter: 2 3/4in.; ring size: 7 1/4

US\$1,800 - 2,500



358

359

PROPERTY OF VARIOUS OWNERS

358

A PAIR OF BLACK ONYX, DIAMOND AND 18K GOLD EAR CLIPS

estimated total diamond weight: 2.40cts; length: 1in.

US\$1,000 - 1,500

359

A BLACK ONYX, DIAMOND AND 18K GOLD NECKLACE

estimated total diamond weight: 3.50cts; gross weight approximately: 221 grams; length: 16in.

US\$4,000 - 6,000

360

A DIAMOND AND 14K BI-COLOR GOLD NECKLACE

estimated total diamond weight: 2.50cts; gross weight approximately: 40 grams; length: 17 1/4in.

US\$2,500 - 3,500

361

A BI-COLOR 18K GOLD 'POLO' BRACELET WRISTWATCH, PIAGET

quartz movement, back-wind, diamond indexes; case and dial signed, case no. 761 C 701 405213; gross weight approximately: 100.7 grams; case width: 26mm; length: 6 7/8in.

US\$3,000 - 5,000

362

A HONG KONG GOLD COIN, DIAMOND AND 14K BI-COLOR GOLD NECKLACE

estimated total diamond weight: 6.00cts; gross weight approximately: 207 grams; length: 17 3/4in.

US\$5,500 - 6,500

363

A COLLECTION OF ROCK CRYSTAL QUARTZ AND 18K GOLD JEWELRY

comprising a bracelet, a pair of earrings and a ring; bracelet length: 7 1/2in.; earring length: 1 5/8in.; ring size: 5 1/4

US\$2,500 - 3,500

364

AN ENAMEL, DIAMOND AND 18K GOLD PENDANT NECKLACE, LA PEPITA

signed La Pepita; estimated total diamond weight: 2.80cts; gross weight approximately: 176 grams; length: 18 3/4in.

US\$5,000 - 7,000

PROPERTY FROM A PARADISE VALLEY, ARIZONA, ESTATE

365

A LADY'S 18K GOLD BRACELET WRISTWATCH, PATEK PHILIPPE

retailed by Gubelin, mechanical movement, dial with bark finish; case, dial, and movement signed; Ref. 3371/1, case 2662093, movement 997183; gross weight approximately: 54 grams; case width: 3/4in; length: 6 1/2in.

US\$2,000 - 3,000



360



361



362



363



364



365



366



367



368



369



370



371



PROPERTY OF VARIOUS OWNERS

366
AN ENAMEL, DIAMOND, EMERALD AND GOLD TIGER RING
size: 5 3/4

US\$800 - 1,200
 To be sold without reserve

367
A PAIR OF 18K GOLD DAY/NIGHT EAR CLIPS, DAVID WEBB
signed WEBB; weighing approximately: 38 grams; length: 2in.

US\$3,000 - 5,000

368
A DIAMOND AND 18K GOLD RING, HENRY DUNAY
signed Dunay; estimated total diamond weight: 2.00cts; size: 5 3/4

US\$1,500 - 2,000

369
A DIAMOND, ENAMEL AND 14K GOLD SUITE, FRASCAROLO
comprising a necklace with pendant/brooch, bracelet and earrings; signed FC; estimated total diamond weight: 1.20cts; gross weight approximately: 241 grams; necklace length: 24 3/4in.; bracelet length: 7in.; earring length: 1 5/8in.

US\$3,000 - 5,000

370
A DIAMOND, ENAMEL AND 18K GOLD HINGED TIGER BANGLE, FRASCAROLO
signed FC; gross weight approximately: 119 grams; diameter: 2 1/4in.

US\$3,000 - 5,000

371
A BLACK ONYX, DIAMOND AND 18K GOLD RING
gross weight approximately: 28 grams; size: 5 1/2

US\$800 - 1,200
 To be sold without reserve

372
A PAIR OF ENAMEL AND 18K GOLD EAR CLIPS, DAVID WEBB
signed WEBB; gross weight approximately: 46 grams; dimensions: 1 x 1 1/4in.

US\$2,000 - 3,000

373
A DIAMOND AND 18K GOLD BAND, CHAUMET, FRENCH
signed Chaumet with French assay marks, no. 174999; size: 7

US\$1,800 - 2,500

374
AN ENAMEL AND GOLD NECKLACE
gross weight approximately: 131 grams; length: 16 1/4in.

US\$1,500 - 2,000

375
A DIAMOND, ONYX AND 18K GOLD RING
estimated total diamond weight: 1.40cts; gross weight approximately: 27 grams; size: 7 1/2

US\$1,500 - 2,500



PROPERTY OF A LOS ANGELES COLLECTOR

**376
A GREEN TOURMALINE, DIAMOND AND WHITE GOLD RING**

cushion mixed-cut tourmaline approximately: 10.36 x 8.91 x 6.12mm; *estimated total diamond weight: 1.00ct; size: 6 1/2*

US\$1,800 - 2,200

**377
AN EMERALD, DIAMOND AND GOLD RING**

square step-cut emerald approximately: 7.75 x 7.64 x 5.67mm; *size: 7 3/4*

US\$3,000 - 5,000

**378
A PAIR OF 14K GOLD HINGED BANGLES, TIFFANY & CO.**

signed Tiffany & Co.; weighing approximately: 30 grams; diameter: 2 1/2in.

US\$1,000 - 1,500

**379
A 14K GOLD BRACELET**

weighing approximately: 75 grams; length: 7 1/2in.

US\$1,000 - 1,500

**380
AN EMERALD, DIAMOND AND GOLD BRACELET**

length: 7in.

**US\$800 - 1,200
To be sold without reserve**

**381
AN 18K GOLD BRACELET, ENGLISH**
with English hallmarks; weighing approximately: 56 grams; length: 7in.

US\$1,000 - 1,500



382



383



385



384



386

382

A SAPPHIRE, DIAMOND AND GOLD RING

oval mixed-cut sapphire approximately: 9.02 x 7.45 x 5.46mm; size: 6

US\$3,000 - 5,000

383

A DIAMOND AND PLATINUM RING SET

emerald-cut diamond approximately: 1.25cts; size: 5 3/4

US\$7,000 - 9,000

384

A DIAMOND AND 18K BI-COLOR GOLD HINGED BANGLE

gross weight approximately: 26 grams; diameter: 2 1/4in.

US\$1,000 - 1,500

385

A DIAMOND, PALLADIUM AND 14K GOLD BROOCH, TIFFANY & CO.

signed Tiffany & Co.; estimated total diamond weight: 5.70cts; length: 2 1/4in.

US\$5,000 - 7,000

386

A STAR RUBY, DIAMOND AND WHITE METAL RING

oval cabochon star ruby approximately: 15.23 x 12.46 x 7.42mm; size: 7 1/4

US\$1,200 - 1,800



388

389



390



391



392

387
No lot

388
**A PAIR OF OPAL, TANZANITE, DIAMOND
AND SILVER EARRINGS**
*estimated total diamond weight: 2.25cts;
length: 1 1/8in.*

US\$2,000 - 3,000

389
A TOPAZ BEAD NECKLACE
with a 14K gold clasp; length: 17in

US\$1,200 - 1,800

390
**A FIRE OPAL, DIAMOND, PLATINUM
AND 18K GOLD RING**
*oval cabochon fire opal approximately: 14.24
x 8.59 x 6.12mm; estimated total diamond
weight: 1.50cts; size: 5 1/2*

US\$2,500 - 3,500

391
**A SAPPHIRE, DIAMOND AND 18K GOLD
RING/PENDANT**
*square cushion mixed-cut sapphire weighing
approximately: 11.50cts; estimated total
diamond weight: 2.35cts; size 4 1/2*

US\$10,000 - 15,000

Accompanied by AGL report # 1087713,
dated October 13, 2017, stating the sapphire
as: Ceylon (Sri Lankan) origin, no indications
clarity enhancement, heat treated.

392
**AN OPAL, DIAMOND, STERLING SILVER
AND 14K GOLD BRACELET**
*estimated total diamond weight: 4.40cts; 56
grams; length: 8in.*

US\$4,000 - 6,000



393



394



396



395



397

393
**A PAIR OF SAPPHIRE, EMERALD,
DIAMOND AND GOLD EARRINGS**
length: 1 1/2in.

US\$2,500 - 3,500

394
**A TANZANITE, DIAMOND, SILVER AND
14K GOLD RING**
*freeform tanzanite cabochon approximately:
13.66 x 14.88 x 4.65mm; size: 6 1/2*

US\$1,200 - 1,500

395
**A PINK TOURMALINE, DIAMOND AND
WHITE GOLD RING**
*oval-shaped mixed-cut pink tourmaline
approximately: 15.87 x 11.55mm; size: 5 1/4*

US\$800 - 1,200
To be sold without reserve

396
**A PAIR OF SAPPHIRE, OPAL, DIAMOND,
SILVER AND GOLD EARRINGS**
*estimated total diamond weight: 2.10cts;
length: 1 3/4in.*

US\$3,000 - 5,000

397
**A SAPPHIRE, YELLOW SAPPHIRE,
RUBY, EMERALD AND GOLD
MULTISTRAND NECKLACE**
*beads approximately: 3.0 to 7.0mm; length:
30in.*

US\$800 - 1,200
To be sold without reserve



398

399

400

401

402



403



404



405



406

PROPERTY OF A WEST COAST COLLECTOR

**398
A PINK SAPPHIRE AND 14K GOLD HINGED BANGLE**

*gross weight approximately: 42 grams;
diameter: 2 1/4in.*

US\$1,000 - 1,500

**399
A DIAMOND, EMERALD AND BI-COLOR GOLD FLOWER BROOCH, BUCCELLATI, ITALIAN**

signed Buccellati; length: 2 1/4in.

US\$2,500 - 3,500

**400
A DIAMOND AND TRI-COLOR GOLD BROOCH**

*estimated total diamond weight: 2.10cts;
gross weight approximately: 27 grams;
length: 2 1/2in.*

US\$2,000 - 3,000

**401
A STAR RUBY, DIAMOND AND 18K WHITE GOLD RING**

*oval double cabochon star ruby
approximately: 14.69 x 12.22 x 11.81mm;
estimated total diamond weight: 2.50cts;
size: 6 1/2*

US\$1,500 - 2,000

**402
A RUBY BEAD, DIAMOND AND 14K GOLD NECKLACE**

*ruby beads approximately: 12.0 to 27.0mm;
length: 28 1/2in.*

US\$3,000 - 5,000

**403
A 19TH CENTURY DIAMOND AND SILVER-TOPPED GOLD EN TREMBLANT SPRAY BROOCH**

*estimated total diamond weight: 5.00cts;
gross weight approximately: 25 grams;
length: 3 3/4in.*

US\$1,200 - 1,800

**404
A PAIR OF AQUAMARINE, DIAMOND, SEED PEARL AND GOLD EAR PENDANTS**

length: 1 3/4in.

US\$1,200 - 1,800

**405
AN EMERALD, DIAMOND, CULTURED PEARL AND SILVER-TOPPED GOLD BROOCH**

*estimated total diamond weight: 1.30cts;
gross weight approximately: 34 grams;
length: 3 1/2in.*

US\$1,200 - 1,800



407



408

409



410



411



412

PROPERTY OF VARIOUS OWNERS

406

A DIAMOND AND GOLD FLOWER BRACELET, FRENCH

with French assay and maker's marks, no. 2219; estimated total diamond weight: 1.30cts; gross weight approximately: 39 grams; length: 7in.

US\$2,500 - 3,500

407

A 14K GOLD NECKLACE, TIFFANY & CO.

signed Tiffany; weighing approximately: 184 grams; length: 15 1/4in.

US\$4,000 - 6,000

408

A 14K GOLD BRACELET, TIFFANY & CO.

signed Tiffany; weighing approximately: 88 grams; length: 7 1/4in.

US\$2,000 - 3,000

PROPERTY OF AN ENGLISH LADY

409

A GEM-SET, DIAMOND AND 18K GOLD HEART LOCKET

gross weight approximately: 36 grams; dimensions: 1 7/8 x 2 1/8in.

US\$1,200 - 1,800

PROPERTY OF A LADY

410

A RUBY, DIAMOND AND 18K GOLD CROSS PENDANT

length: 2in.

US\$1,500 - 2,000

PROPERTY OF VARIOUS OWNERS

411

A GARNET AND GOLD NECKLACE AND EARRING SET

gross weight approximately: 56 grams; necklace length: 18 1/2in.; earring length: 1in.

US\$800 - 1,200

To be sold without reserve

412

A RUBY, DIAMOND AND 18K BI-COLOR GOLD LONG CHAIN

estimated total diamond weight: 1.25cts; gross weight approximately: 28 grams; length: 30in.

US\$3,000 - 5,000



413



416



414



415



417



418

419



413
**A CULTURED PEARL, RUBY, DIAMOND
AND 14K GOLD CROWN BROOCH**
*estimated total diamond weight: 1.65cts;
dimensions: 1 1/4 x 1 1/16in.*

US\$800 - 1,200

414
**A RUBY, DIAMOND AND 18K ROSE
GOLD ETERNITY BAND**
size: 6

US\$1,800 - 2,500

**PROPERTY OF A NATIVE SAN
FRANCISCAN**

415
**A PINK SAPPHIRE AND 18K GOLD
BRACELET**
*gross weight approximately: 66 grams;
length: 8in.*

US\$2,000 - 3,000

PROPERTY OF ANOTHER OWNER

416
**A RUBY AND GOLD NECKLACE AND
BRACELET SET**
*necklace length: 16 1/2in.; bracelet length:
7in.*

US\$1,200 - 1,800

PROPERTY OF AN ENGLISH LADY

417
**A DIAMOND AND 18K ROSE GOLD
RING, DIAH D**
*signed DIAH D, with maker's marks;
estimated total diamond weight: 1.60cts;
size: 5 1/2*

US\$2,000 - 3,000

PROPERTY OF VARIOUS OWNERS

418
**A DIAMOND AND 18K BI-COLOR GOLD
BRACELET**
*no. 83023; estimated total diamond weight:
2.80cts; length: 7in.*

US\$1,000 - 1,500

419
AN 18K GOLD LONG CHAIN
*weighing approximately: 32 grams; length:
47 1/2in.*

US\$1,000 - 1,500



420

421

422

423

425

424



426



427



428

420

**AN AQUAMARINE, RUBY, DIAMOND
AND 18K GOLD RING**

oval mixed-cut aquamarine approximately:
23.18 x 16.45mm; size: 5 3/4

US\$800 - 1,200

To be sold without reserve

421

**A ROSE QUARTZ, DIAMOND AND 18K
GOLD RING, D'ZEINER**

round cabochon rose quartz approximately:
22.44 x 22.55 x 15.46mm; signed D'Zeiner;
size: 5 1/2

US\$1,000 - 1,500

422

**A PINK TOURMALINE, AQUAMARINE
BEAD AND 18K GOLD PENDANT
NECKLACE, NERSO**

rectangular-shaped cabochon pink
tourmaline approximately: 33.00 x 28.00 x
12.37mm; signed Nerso; length: 17in.

US\$800 - 1,200

To be sold without reserve

423

**A PAIR OF AQUAMARINE, PINK
TOURMALINE AND 18K GOLD
EARRINGS**

weighing approximately: 39 grams; length:
1 1/4in.

US\$800 - 1,200

To be sold without reserve

424

**A PAIR OF PINK TOURMALINE,
GREEN TOURMALINE AND 18K GOLD
EARRINGS, SEIDENGANG**

signed SG; length: 1in.

US\$800 - 1,200

To be sold without reserve

425

**A PAIR OF KUNZITE, DIAMOND AND 18K
GOLD EAR CLIPS, NERSO**

signed Nerso; gross weight approximately:
38 grams; length: 1 1/4in.

US\$1,200 - 1,800

426

**A PAIR OF ROSE QUARTZ AND 18K
GOLD EARRINGS, NERSO**

signed Nerso; gross weight approximately:
38 grams; diameter: 1 1/4in.

US\$1,000 - 1,500

427

**AN EMERALD, PINK TOURMALINE,
GREEN TOURMALINE AND 18K GOLD
PENDANT, DENISE ROBERGÉ**

signed Denise Robergé; gross weight
approximately: 63 grams; dimension: 1 1/8
x 2 1/4in.

US\$1,500 - 2,000

**PROPERTY OF A LOS ANGELES
COLLECTOR**

428

**A CARVED PINK TOURMALINE AND
GOLD CLIP**

dimensions: 2 1/4 x 1 3/4in.

US\$2,500 - 3,500



PROPERTY OF VARIOUS OWNERS

429

A 14K GOLD PENDANT, P. VENDOME

signed P. Vendome; weighing approximately: 55 grams; dimension: 2 x 3in.

US\$800 - 1,200

To be sold without reserve

430

AN AQUAMARINE AND 18K BI-COLOR GOLD 'PYRAMID' RING, BULGARI

signed Bulgari; size: 5 3/4

US\$1,500 - 2,500

431

AN AQUAMARINE, PINK TOURMALINE, DIAMOND AND 18K GOLD NECKLACE, NERSE

oval-shaped cabochon aquamarine approximately: 43.00 x 29.00mm; signed Nerse; length: 18in.

US\$3,000 - 5,000

PROPERTY FROM A NORTHERN CALIFORNIA COLLECTOR

432

A COLORED DIAMOND AND 14K GOLD RING

estimated total diamond weight: 5.00cts; size: 8 1/4 (colored diamonds untested for origin of color)

US\$800 - 1,200

To be sold without reserve

PROPERTY OF VARIOUS OWNERS

433

A DIAMOND AND 18K GOLD BRACELET

estimated total diamond weight: 4.90cts; gross weight approximately: 25 grams; length: 7in.

US\$1,800 - 2,500



434

434
A LADY'S 18K GOLD INTEGRAL BRACELET WRISTWATCH, ROLEX
 mechanical movement; with Rolex box; case, dial and movement signed; case no. 4323; gross weight approximately: 64 grams; case diameter: 19mm; length: 6 1/2in.

US\$2,000 - 3,000

435
A SAPPHIRE, DIAMOND AND 18K GOLD RING
 oval mixed cut sapphire approximately: 8.10 x 7.60 x 5.00mm; estimated total diamond weight: 1.00ct; size: 10

US\$3,000 - 5,000

AGL report #1087712, dated October 13, 2017, stating: Natural Sapphire, Ceylon (Sri Lanka), heated



435



436

436
A LAPIS LAZULI, DIAMOND AND 18K BICOLOR GOLD RING
 estimated total diamond weight: 1.03cts; size 8 1/2

US\$1,200 - 1,800

437
A SAPPHIRE, DIAMOND AND GOLD RING
 oval mixed-cut sapphire approximately: 9.48 x 6.98 x 3.49mm; estimated total diamond weight: 2.20cts; size: 7 3/4

US\$3,000 - 5,000



437



438

438
A PAIR OF 18K GOLD EAR CLIPS
 weighing approximately: 35 grams; length: 1 1/2in.

US\$800 - 1,200
 To be sold without reserve

439
AN 18K GOLD NECKLACE
 weighing approximately: 242 grams; length: 15in.

US\$5,500 - 7,500

439



440



441



442



443



444

440

**A CULTURED PEARL, COLORED
DIAMOND AND 18K BI-COLOR GOLD
RING**

pearl approximately 15.5mm; estimated total
diamond weight: 2.95cts; size 6 1/4 (yellow
diamonds untested for origin of color)

US\$4,000 - 6,000

441

**A PAIR OF COLORED CULTURED
PEARL, DIAMOND AND 18K GOLD
EARRINGS, DSL**

pearls approximately: 11.00 to 12.00mm;
signed DSL; length: 1 1/2in. (golden pearls
untested for origin of color)

US\$1,500 - 2,000

442

**A PAIR OF DIAMOND AND 18K GOLD
EAR CLIPS**

estimated total diamond weight: 6.25cts;
length: 1 1/4in.

US\$2,500 - 3,500

443

A RUBY, DIAMOND AND 18K GOLD RING

size: 6 1/2

US\$800 - 1,200

444

**A COLORED CULTURED PEARL,
YELLOW SAPPHIRE AND 18K GOLD
NECKLACE, DSL**

pearls approximately: 12.0 to 15.6mm;
signed DSL; length: 17 1/2in. (pearls
untested for origin of color)

US\$6,000 - 9,000



445



446



447



449



448



450

445

A PAIR OF RUBY, DIAMOND AND 18K GOLD EAR PENDANTS

no. 102025 and 100025; length: 7/8in.

US\$1,000 - 1,500

446

A DIAMOND AND 18K GOLD HEART RING

estimated total diamond weight: 2.95cts; size: 6 1/2

US\$1,800 - 2,500

447

A DIAMOND AND 18K GOLD HEART PENDANT ON CHAIN

estimated total diamond weight: 4.35cts; total length: 18 1/4in.

US\$2,500 - 3,000

448

A PAIR OF DIAMOND AND 18K BI-COLOR GOLD EARRINGS

estimated total diamond weight: 7.00 cts; length: 1 1/2in.

US\$4,000 - 6,000

449

A DIAMOND AND GOLD BROOCH

estimated total diamond weight: 9.50cts; gross weight approximately: 29 grams; dimension: 2 x 2in.

US\$4,000 - 6,000

450

A RUBY, DIAMOND AND 18K GOLD RING

oval mixed-cut ruby approximately: 6.66 x 5.60 x 3.74mm; estimated total diamond weight: 1.55cts; size: 6

US\$2,500 - 3,500

Accompanied by GIA report #2181826267 dated November 3, 2017 stating the Ruby as: Burmese origin, with heat enhancement.



PROPERTY OF AN ENGLISH LADY

451
A PAIR OF DIAMOND AND 18K WHITE GOLD EAR CLIPS, ANDREOLI
signed Andreoli, with maker's marks; estimated total diamond weight: 4.00cts; gross weight approximately: 34 grams; dimensions: 1 3/4 x 1 1/8in.

US\$3,000 - 5,000

PROPERTY OF ANOTHER OWNER

452
A SPINEL, DIAMOND AND 18K BI-COLOR GOLD RING
oval mixed-cut spinel approximately: 9.53 x 8.12 x 4.63mm; size: 6

US\$2,500 - 3,500

PROPERTY OF AN ENGLISH LADY

453
A DIAMOND AND WHITE GOLD HEART RING
heart-shaped brilliant-cut diamond weighs: 1.09cts; estimated total remaining diamond weight: 1.90cts; size: 7 3/4

US\$3,000 - 5,000

Accompanied by GIA report # 2195121745 dated February 21, 2018, stating the diamond is: H color, VS2 clarity.

454

A DIAMOND AND 18K WHITE GOLD COLLAR, ANDREOLI

signed Andreoli; estimated total diamond weight: 13.25cts; gross weight approximately: 81 grams; length: 16 1/4in.

US\$8,000 - 10,000

PROPERTY OF VARIOUS OWNERS

455

A KUNZITE, DIAMOND AND 14K WHITE GOLD RING

oval mixed-cut kunzite approximately: 16.97 x 12.49 x 9.06mm; estimated total diamond weight: 1.15cts; size: 7 1/2

US\$3,000 - 5,000



456



457



458



459



460



461

456

A KUNZITE, DIAMOND AND 14K WHITE GOLD PENDANT ON CHAIN

cushion mixed-cut kunzite approximately: 32.00 x 19.00 x 17.06mm; gross weight approximately: 28 grams; total length: 19 1/2in.

US\$4,000 - 6,000

457

A DIAMOND AND 14K WHITE GOLD RING

estimated total diamond weight: 2.00cts; size: 6 1/2

US\$1,000 - 2,000

458

A PAIR OF MULTI-COLORED SAPPHIRE AND 18K WHITE GOLD EAR CLIPS

length: 1 1/4in.

US\$2,000 - 3,000

459

A KUNZITE, DIAMOND AND 14K WHITE GOLD RING

oval mixed-cut kunzite approximately: 27.79cts; size: 6 1/2

US\$1,000 - 1,500

Accompanied by GIA report #5182281766, dated April 12, 2017, stating: Spodumene, Kunzite.

460

A PINK TOURMALINE, DIAMOND AND 18K WHITE GOLD RING

estimated total diamond weight: 0.95ct; size: 6

US\$1,800 - 2,500

PROPERTY OF AN ENGLISH LADY

461

A DIAMOND AND 18K WHITE GOLD BRACELET

estimated total diamond weight: 23.00cts; gross weight approximately: 90 grams; length: 7 1/4in. width: 1 1/4in.

US\$12,000 - 18,000



462

PROPERTY OF VARIOUS OWNERS

462

**RED CHALCEDONY, NEPHRITE
AND QUARTZ FLOWER STUDY--
"THUNBERGIA"**

Rendered in the style of Faberge, each flower head carved of red chalcedony, with faceted yellow sapphires to the center, rimmed in 18K yellow gold. With polished Russian nephrite leaves, on an 18K yellow gold stem, removable from the rock crystal quartz vase which is rimmed in gold. *Height 5in*

US\$2,000 - 3,000

OLD MASTER PAINTINGS

Wednesday 4 July 2018
New Bond Street, London

CIRCLE OF MICHELANGELO
MERISI DA CARAVAGGIO
(Caravaggio 1573-1610 Porto Ercole)

Saint Francis in contemplation

£50,000 - 70,000 *

The Soprintendenza alle Belle Arti italiana considers this painting to be a work of national importance and requires it to remain in Italy; it cannot therefore be exported from Italy.

ENQUIRIES

+44 (0) 20 7468 8308
oldmasters@bonhams.com

The work will be
available to view in Italy
7-10 May, Milan
18-21 June, Rome



Bonhams

LONDON

bonhams.com/oldmasterpaintings

* plus buyer's premium and other fees. For details of the charges payable in addition to the final hammer price, please visit bonhams.com/buyersguide

FINE CLOCKS

Wednesday 11 July 2018
New Bond Street, London

**WILLIAM BOWYER
AN EXCEEDINGLY RARE EARLY
17TH CENTURY LANTERN
CLOCK, DATED 1617**

ENQUIRIES

+44 (0) 20 7468 8364
james.stratton@bonhams.com



Bonhams

LONDON

bonhams.com/clocks

THE MARINE SALE

Wednesday 17 October 2018
Knightsbridge, London

Entries now invited

CHARLES EDWARD DIXON
(BRITISH, 1872-1934)

*'Oak, Hemp, and Powder,
Trafalgar, 1805'* (detail)

Sold for £62,500 *

The world record for a work
on paper by the artist

ENQUIRIES

+44 (0) 20 7393 3865

leo.webster@bonhams.com



Bonhams

MONTPELIER STREET • KNIGHTSBRIDGE

bonhams.com/departments/PIC-MAR/

* Prices shown include buyer's premium. Details can be found at bonhams.com

CONDITIONS OF SALE

The following Conditions of Sale, as amended by any published or posted notices or verbal announcements during the sale, constitute the entire terms and conditions on which property listed in the catalog shall be offered for sale or sold by Bonhams & Butterfields Auctioneers Corp. and any consignor of such property for whom we act as agent. If live online bidding is available for the subject auction, additional terms and conditions of sale relating to online bidding will apply; see www.bonhams.com/WebTerms for the supplemental terms. As used herein, "Bonhams," "we" and "us" refer to Bonhams & Butterfields Auctioneers Corp.

1. As used herein, the term "bid price" means the price at which a lot is successfully knocked down to the purchaser. The term "purchase price" means the aggregate of (a) the bid price, (b) a PREMIUM retained by us and payable by the purchaser EQUAL TO 25% OF THE FIRST \$250,000 OF THE BID PRICE, 20% OF THE AMOUNT OF THE BID PRICE ABOVE \$250,000 UP TO AND INCLUDING \$4,000,000, AND 12.5% OF THE AMOUNT OF THE BID PRICE OVER \$4,000,000, and (c) unless the purchaser is exempt by law from the payment thereof, any Arizona, California, Colorado, Connecticut, Florida, Georgia, Illinois, Massachusetts, Nevada, New Jersey, New York, Pennsylvania, Texas, Virginia, Washington, D.C., Washington state, or other state or local sales tax (or compensating use tax) and other applicable taxes.

2. On the fall of the auctioneer's hammer, the highest bidder shall have purchased the offered lot in accordance and subject to compliance with all of the conditions set forth herein and (a) assumes full risk and responsibility therefor, (b) if requested will sign a confirmation of purchase, and (c) will pay the purchase price in full or such part as we may require for all lots purchased. No lot may be transferred. Any person placing a bid as agent on behalf of another (whether or not such person has disclosed that fact or the identity of the principal) may be jointly and severally liable with the principal under any contract resulting from the acceptance of a bid.

Unless otherwise agreed, payment in good funds is due and payable within five (5) business days following the auction sale. Whenever the purchaser pays only a part of the total purchase price for one or more lots purchased, we may apply such payments, in our sole discretion, to the lot or lots we choose. Payment will not be deemed made in full until we have collected good funds for all amounts due.

Payment for purchases may be made in or by (a) cash, (b) cashier's check or money order, (c) personal check with approved credit drawn on a U.S. bank, (d) wire transfer or other immediate bank transfer, or (e) Visa, MasterCard, American Express or Discover credit, charge or debit card. A processing fee will be assessed on any returned checks. Please note that the amount of cash notes and cash equivalents that can be accepted from a given purchaser may be limited.

To the fullest extent permitted by applicable law: The purchaser grants us a security interest in the property, and we may retain as collateral security for the purchaser's obligations to us, any property and all monies held or received by us for the account of the purchaser, in our possession. We also retain all rights of a secured party under the California Commercial Code. If the foregoing conditions or any other applicable conditions herein are not complied with, in addition to all other remedies available to us and the consignor by law, we may at our election: (a) hold the purchaser liable for the full purchase price and any late charges, collection costs, attorneys' fees and costs, expenses and incidental damages incurred by us or the consignor arising out of the purchaser's breach; (b) cancel the sale, retaining as liquidated damages all payments made by the purchaser; and/or (c) cancel the sale and/or

resell the purchased property, at public auction and/or by private sale, and in such event the purchaser shall be liable for the payment of all consequential damages, including any deficiencies or monetary losses, and all costs and expenses of such sale or sales, our commissions at our standard rates, all other charges due hereunder, all late charges, collection costs, attorneys' fees and costs, expenses and incidental damages. In addition, where two or more amounts are owed in respect of different transactions by the purchaser to us, to Bonhams 1793 Limited and/or to any of our other affiliates, subsidiaries or parent companies worldwide within the Bonhams Group, we reserve the right to apply any monies paid in respect of a transaction to discharge any amount owed by the purchaser. If all fees, commissions, premiums, bid prices and other sums due to us from the purchaser are not paid promptly as provided in these Conditions of Sale, we reserve the right to impose a finance charge equal to 1.5% per month (or, if lower, the maximum nonusurious rate of interest permitted by applicable law), on all amounts due to us beginning on the 31st day following the sale until payment is received, in addition to other remedies available to us by law.

3. We reserve the right to withdraw any property and to divide and combine lots at any time before such property's auction. Unless otherwise announced by the auctioneer at the time of sale, all bids are per lot as numbered in the catalog and no lots shall be divided or combined for sale.

4. We reserve the right to reject a bid from any bidder, to split any bidding increment, and to advance the bidding in any manner the auctioneer may decide. In the event of any dispute between bidders, or in the event the auctioneer doubts the validity of any bid, the auctioneer shall have sole and final discretion either to determine the successful bidder or to re-offer and resell the article in dispute. If any dispute arises after the sale, our sales records shall be conclusive in all respects.

5. If we are prevented by fire, theft or any other reason whatsoever from delivering any property to the purchaser or a sale otherwise cannot be completed, our liability shall be limited to the sum actually paid therefor by the purchaser and shall in no event include any compensatory, incidental or consequential damages.

6. If a lot is offered subject to a reserve, we may implement such reserve by bidding on behalf of the consignor, whether by opening bidding or continuing bidding in response to other bidders until reaching the reserve. If we have an interest in an offered lot and the proceeds therefrom other than our commissions, we may bid therefor to protect such interest. CONSIGNORS ARE NOT ALLOWED TO BID ON THEIR OWN ITEMS.

7. All statements contained in the catalog or in any bill of sale, condition report, invoice or elsewhere as to authorship, period, culture, source, origin, measurement, quality, rarity, provenance, importance, exhibition and literature of historical relevance, or physical condition ARE QUALIFIED STATEMENTS OF OPINION AND NOT REPRESENTATIONS OR WARRANTIES. No employee or agent of Bonhams is authorized to make on our behalf or on that of the consignor any representation or warranty, oral or written, with respect to any property.

8. All purchased property shall be removed from the premises at which the sale is conducted by the date(s) and time(s) set forth in the "Buyer's Guide" portion of this catalog. Property designated with a "W" and associated purchased lots, if not removed promptly following sale, will be transferred to an offsite warehouse at the purchaser's risk and expense, as set forth in more detail in the "Buyer's Guide." Purchased property that is permitted to remain onsite at Bonhams' facility should be removed at the purchaser's expense not later than 5:00 p.m. Pacific Time

five (5) business days following the date of the sale. If not so removed, a storage fee of \$5.00 per lot per day will be payable to us by the purchaser beginning at the close of the 21st day following the sale, and we may thereafter transfer such property to an offsite warehouse at the purchaser's risk and expense. Accounts must be settled in full before property will be released. Packing and handling of purchased lots are the responsibility of the purchaser. Bonhams can provide packing and shipping services for certain items as noted in the "Buyer's Guide" section of the catalog.

9. The copyright in the text of the catalog and the photographs, digital images and illustrations of lots in the catalog belong to Bonhams or its licensors. You will not reproduce or permit anyone else to reproduce such text, photographs, digital images or illustrations without our prior written consent.

10. These Conditions of Sale shall bind the successors and assigns of all bidders and purchasers and inure to the benefit of our successors and assigns. No waiver, amendment or modification of the terms hereof (other than posted notices or oral announcements during the sale) shall bind us unless specifically stated in writing and signed by us. If any part of these Conditions of Sale is for any reason invalid or unenforceable, the rest shall remain valid and enforceable.

11. These Conditions of Sale and the purchaser's and our respective rights and obligations hereunder are governed by the laws of the State of California. By bidding at an auction, each purchaser and bidder agrees to be bound by these Conditions of Sale. Any dispute, controversy or claim arising out of or relating to this agreement, or the breach, termination or validity thereof, brought by or against Bonhams (but not including claims brought against the consignor by the purchaser of lots consigned hereunder) shall be resolved by the procedures set forth below.

MEDIATION AND ARBITRATION PROCEDURES

(a) Within 30 days of written notice that there is a dispute, the parties or their authorized and empowered representatives shall meet by telephone and/or in person to mediate their differences. If the parties agree, a mutually acceptable mediator shall be selected and the parties will equally share such mediator's fees. The mediator shall be a retired judge or an attorney familiar with commercial law and trained in or qualified by experience in handling mediations. Any communications made during the mediation process shall not be admissible in any subsequent arbitration, mediation or judicial proceeding. All proceedings and any resolutions thereof shall be confidential, and the terms governing arbitration set forth in paragraph (c) below shall govern.

(b) If mediation does not resolve all disputes between the parties, or in any event no longer than 60 days after receipt of the written notice of dispute referred to above, the parties shall submit the dispute for binding arbitration before a single neutral arbitrator. Such arbitrator shall be a retired judge or an attorney familiar with commercial law and trained in or qualified by experience in handling arbitrations. Such arbitrator shall make all appropriate disclosures required by law. The arbitrator shall be drawn from a panel of a national arbitration service agreed to by the parties, and shall be selected as follows: (i) If the national arbitration service has specific rules or procedures, those rules or procedures shall be followed; (ii) If the national arbitration service does not have rules or procedures for the selection of an arbitrator, the arbitrator shall be an individual jointly agreed to by the parties. If the parties cannot agree on a national arbitration service, the arbitration shall be conducted by the American Arbitration Association, and the arbitrator shall be selected in accordance with the Rules of

CONDITIONS OF SALE - CONTINUED

the American Arbitration Association. The arbitrator's award shall be in writing and shall set forth findings of fact and legal conclusions.

(c) Unless otherwise agreed to by the parties or provided by the published rules of the national arbitration service:

(i) the arbitration shall occur within 60 days following the selection of the arbitrator;

(ii) the arbitration shall be conducted in the designated location, as follows: (A) in any case in which the subject auction by Bonhams took place or was scheduled to take place in the State of New York or Connecticut or the Commonwealth of Massachusetts, the arbitration shall take place in New York City, New York; (B) in all other cases, the arbitration shall take place in the city of San Francisco, California; and

(iii) discovery and the procedure for the arbitration shall be as follows:

(A) All arbitration proceedings shall be confidential;

(B) The parties shall submit written briefs to the arbitrator no later than 15 days before the arbitration commences;

(C) Discovery, if any, shall be limited as follows: (I) Requests for no more than 10 categories of documents, to be provided to the requesting party within 14 days of written request therefor; (II) No more than two (2) depositions per party, provided however, the deposition(s) are to be completed within one (1) day; (III) Compliance with the above shall be enforced by the arbitrator in accordance with California law;

(D) Each party shall have no longer than eight (8) hours to present its position. The entire hearing before the arbitrator shall not take longer than three (3) consecutive days;

(E) The award shall be made in writing no more than 30 days following the end of the proceeding. Judgment upon the award rendered by the arbitrator may be entered by any court having jurisdiction thereof.

To the fullest extent permitted by law, and except as required by applicable arbitration rules, each party shall bear its own attorneys' fees and costs in connection with the proceedings and shall share equally the fees and expenses of the arbitrator.

LIMITED RIGHT OF RESCISSION

If within one (1) year from the date of sale, the original purchaser (a) gives written notice to us alleging that the identification of Authorship (as defined below) of such lot as set forth in the **BOLD TYPE** heading of the catalog description of such lot (as amended by any saleroom notices or verbal announcements during the sale) is not substantially correct based on a fair reading of the catalog (including the terms of any glossary contained therein), and (b) within 10 days after such notice returns the lot to us in the same condition as at the time of sale, and (c) establishes the allegation in the notice to our satisfaction (including by providing one or more written opinions by recognized experts in the field, as we may reasonably require), then the sale of such lot will be rescinded and, unless we have already paid to the consignor monies owed him in connection with the sale, the original purchase price will be refunded.

If, prior to receiving such notice from the original purchaser alleging such defect, we have paid the consignor monies owed him in connection with the sale, we shall pay the original purchaser the amount of our commissions, any other sale proceeds to which we are entitled and applicable taxes received from the purchaser on the sale and make demand on the consignor to pay the balance of the original purchase price to the original purchaser. Should the consignor fail to pay such amount promptly, we may disclose the identity of the consignor and assign to the original purchaser our rights against the consignor with respect to the lot the sale of which is sought to be rescinded. Upon such disclosure and assignment, any liability of Bonhams as consignor's agent with respect to said lot shall automatically terminate.

The foregoing limited right of rescission is available to the original purchaser only and may not be assigned to or relied upon by any subsequent transferee of the property sold. The purchaser hereby accepts the benefit of the consignor's warranty of title and other representations and warranties made by the consignor for the purchaser's benefit. Nothing in this section shall be construed as an admission by us of any representation of fact, express or implied, obligation or responsibility with respect to any lot. **THE PURCHASER'S SOLE AND EXCLUSIVE**

REMEDY AGAINST BONHAMS FOR ANY REASON WHATSOEVER IS THE LIMITED RIGHT OF RESCISSION DESCRIBED IN THIS SECTION.

"Authorship" means only the identity of the creator, the period, culture and source or origin of the lot, as the case may be, as set forth in the **BOLD TYPE** heading of the print catalog entry. The right of rescission does not extend to: (a) works of art executed before 1870 (unless these works are determined to be counterfeits created since 1870), as this is a matter of current scholarly opinion which can change; (b) titles, descriptions, or other identification of offered lots, which information normally appears in lower case type below the **BOLD TYPE** heading identifying the Authorship; (c) Authorship of any lot where it was specifically mentioned that there exists a conflict of specialist or scholarly opinion regarding the Authorship of the lot at the time of sale; (d) Authorship of any lot which as of the date of sale was in accordance with the then generally-accepted opinion of scholars and specialists regarding the same; or (e) the identification of periods or dates of creation in catalog descriptions which may be proven inaccurate by means of scientific processes that are not generally accepted for use until after publication of the catalog in which the property is offered or that were unreasonably expensive or impractical to use at the time of such publication.

LIMITATION OF LIABILITY

EXCEPT AS EXPRESSLY PROVIDED ABOVE, ALL PROPERTY IS SOLD "AS IS." NEITHER BONHAMS NOR THE CONSIGNOR MAKES ANY REPRESENTATION OR WARRANTY, EXPRESS OR IMPLIED, AS TO THE MERCHANTABILITY, FITNESS OR CONDITION OF THE PROPERTY OR AS TO THE CORRECTNESS OF DESCRIPTION, GENUINENESS, ATTRIBUTION, PROVENANCE OR PERIOD OF THE PROPERTY OR AS TO WHETHER THE PURCHASER ACQUIRES ANY COPYRIGHTS OR OTHER INTELLECTUAL PROPERTY RIGHTS IN LOTS SOLD OR AS TO WHETHER A WORK OF ART IS SUBJECT TO THE ARTIST'S MORAL RIGHTS OR OTHER RESIDUAL RIGHTS OF THE ARTIST. THE PURCHASER EXPRESSLY ACKNOWLEDGES AND AGREES THAT IN NO EVENT SHALL BONHAMS BE LIABLE FOR ANY DAMAGES INCLUDING, WITHOUT LIMITATION, ANY COMPENSATORY, INCIDENTAL OR CONSEQUENTIAL DAMAGES.

SELLER'S GUIDE

SELLING AT AUCTION

Bonhams can help you every step of the way when you are ready to sell art, antiques and collectible items at auction. Our regional offices and representatives throughout the US are available to service all of your needs. Should you have any further questions, please visit our website at www.bonhams.com/us for more information or call our Client Services Department at +1 (323) 850 7500.

AUCTION ESTIMATES

The first step in the auction process is to determine the auction value of your property. Bonhams' world-renowned specialists will evaluate your special items at no charge and in complete confidence. You can obtain an auction estimate in many ways:

- Attend one of our Auction Appraisal Events held regularly at our galleries and in other major metropolitan areas. The updated schedule for Bonhams Auction Appraisal Events is available at www.bonhams.com/us.
- Call our Client Services Department to schedule a private appointment at one of our galleries. If you have a large collection, our specialists can travel, by appointment, to evaluate your property on site.
- Send clear photographs to us of each individual item, including item dimensions and other pertinent information with each picture. Photos should be sent to Bonhams' address in envelopes marked

as "photo auction estimate". Alternatively, you can submit your request using our online form at www.bonhams.com/us. Digital images may be attached to the form. Please limit your images to no more than five (5) per item.

CONSIGNING YOUR PROPERTY

After you receive an estimate, you may consign your property to us for sale in the next appropriate auction. Our staff assists you throughout the process, arranging transportation of your items to our galleries (at the consignor's expense), providing a detailed inventory of your consignment, and reporting the prices realized for each lot. We provide secure storage for your property in our warehouses and all items are insured throughout the auction process. You will receive payment for your property approximately 35 days after completion of sale.

Sales commissions vary with the potential auction value of the property and the particular auction in which the property is offered. Please call us for commission rates.

PROFESSIONAL APPRAISAL SERVICES

Bonhams' specialists conduct insurance and fair market value appraisals for private collectors, corporations, museums, fiduciaries and government entities on a daily basis. Insurance appraisals, used for insurance purposes, reflect the cost of replacing property in today's retail market. Fair market value appraisals are used for estate,

tax and family division purposes and reflect prices paid by a willing buyer to a willing seller.

When we conduct a private appraisal, our specialists will prepare a thorough inventory listing of all your appraised property by category. Valuations, complete descriptions and locations of items are included in the documentation.

Appraisal fees vary according to the nature of the collection, the amount of work involved, the travel distance, and whether the property is subsequently consigned for auction.

Our appraisers are available to help you anywhere and at any time. Please call our Client Services Department to schedule an appraisal.

ESTATE SERVICES

Since 1865, Bonhams has been serving the needs of fiduciaries – lawyers, trust officers, accountants and executors – in the disposition of large and small estates. Our services are specially designed to aid in the efficient appraisal and disposition of fine art, antiques, jewelry, and collectibles. We offer a full range of estate services, ranging from flexible financial terms to tailored accounting for heirs and their agents to world-class marketing and sales support.

For more information or to obtain a detailed Trust and Estates package, please visit our website at www.bonhams.com/us or contact our Client Services Department.

BUYER'S GUIDE

BIDDING & BUYING AT AUCTION

Whether you are an experienced bidder or an enthusiastic novice, auctions provide a stimulating atmosphere unlike any other. Bonhams previews and sales are free and open to the public. As you will find in these directions, bidding and buying at auction is easy and exciting. Should you have any further questions, please visit our website at www.bonhams.com or call our Client Services Department at +1 (323) 850 7500.

Catalogs

Before each auction we publish illustrated catalogs that include dates and times for previews and auctions. Our catalogs also provide descriptions and estimated values for each "lot." A lot may refer to a single item or to a group of items auctioned together. We offer our catalogs by subscription or by single copy. For information on subscribing to our catalogs, you may refer to the subscription form in this catalog, call our Client Services Department, or visit our website at www.bonhams.com/us.

Previews

Auction previews are your chance to inspect each lot prior to the auction. We encourage you to look closely and examine each object on which you may want to bid so that you will know as much as possible about it. Items are sold "as is" and with all faults; illustrations in our catalogs, website and other materials are provided for identification only. At the previews, our staff is always available to answer your questions and guide you through the auction process. Condition reports may be available upon request.

Estimates

Bonhams catalogs include estimates for each lot, exclusive of buyer's premium and tax. The estimates are provided as an approximate guide to current market value and should not be interpreted as a representation or prediction of actual selling prices. They are determined well in advance of a sale and are subject to revision. Please contact us should you have any questions about value estimates.

Reserves

All lots in a catalog are subject to a reserve unless otherwise indicated. The reserve is the minimum price that the seller is willing to accept for a lot. This amount is confidential and does not exceed the low estimated value.

BIDDING AT AUCTION

At Bonhams, you can bid in many ways: in person, via absentee bid, over the phone, or via Bonhams' online bidding facility. Absentee bids can be submitted in person, online, via fax or via email.

A valid Bonhams client account is required to participate in bidding activity. You can obtain registration information online, at the reception desk or by calling our Client Services Department.

By bidding at auction, whether in person or by agent, by absentee bid, telephone, online or other means, the buyer or bidder agrees to be bound by the Conditions of Sale.

Lots are auctioned in consecutive numerical order as they appear in the catalog. Bidding normally begins below the low estimate. The auctioneer will accept bids from interested parties present in the saleroom, from telephone bidders, and from absentee bidders who have left written bids in advance of the sale. The auctioneer may also execute bids on behalf of the consignor up to the amount of the reserve, but never above it.

We assume no responsibility for failure to execute bids for any reason whatsoever.

In Person

If you are planning to bid at auction, you will need to register at the reception desk in order to receive a numbered bid card. To place a bid, hold up your card so that the auctioneer can clearly see it. Decide on the maximum amount that you wish to pay, exclusive of buyer's premium and tax, and continue bidding until your bid prevails or you reach your limit. If you are the successful bidder on a lot, the auctioneer will acknowledge your paddle number and bid amount.

Absentee Bids

As a service to those wishing to place bids, we may at our discretion accept bids without charge in advance of sale by telephone, by facsimile or in writing on bidding forms available from us. "Buy" bids will not be accepted; all bids must state the highest bid price the bidder is willing to pay. Our auction staff will try to bid just as you would, with the goal of obtaining the

item at the lowest bid price possible. In the event identical bids are submitted, the earliest bid submitted will take precedence. Absentee bids shall be executed in competition with other absentee bids, any applicable reserve, and bids from other auction participants. A friend or agent may place bids on your behalf, provided that we have received your written authorization prior to the sale. Absentee bid forms are available in our catalogs, online at www.bonhams.com/us, and at our San Francisco, Los Angeles and New York galleries.

By Telephone

Under special circumstances, we can arrange for you to bid by telephone. To arrange for a telephone bid, please contact our Client Services Department a minimum of 24 hours prior to the sale.

Online

Web users may place absentee bids online from anywhere in the world. To bid online, please visit our website at www.bonhams.com/us.

We are pleased to make our live online bidding facility available to bidders in this sale.

Additional terms and conditions of sale relating to online bidding will apply. Please see www.bonhams.com/24860 or contact the Client Services Department to obtain information and learn how you can register and bid online in this sale.

Bid Increments

Bonhams generally uses the following increment multiples as bidding progresses:

\$50-200	by \$10s
\$200-500	by \$20/50/80s
\$500-1,000	by \$50s
\$1,000-2,000	by \$100s
\$2,000-5,000	by \$200/500/800s
\$5,000-10,000	by \$500s
\$10,000-20,000	by \$1,000s
\$20,000-50,000	by \$2,000/5,000/8,000s
\$50,000-100,000	by \$5,000s
\$100,000-200,000	by \$10,000s
above \$200,000	at auctioneer's discretion

The auctioneer may split or reject any bid at any time at his or her discretion as outlined in the Conditions of Sale.

Currency Converter

Solely for the convenience of bidders, a currency converter may be provided at Bonhams sales. The rates quoted for conversion of other currencies to U.S. Dollars are indications only and should not be relied upon by a bidder, and neither Bonhams nor its agents shall be responsible for any errors or omissions in the operation or accuracy of the currency converter.

Buyer's Premium

A buyer's premium is added to the winning bid price of each individual lot purchased, at the rates set forth in the Conditions of Sale. The winning bid price plus the premium constitute the purchase price for the lot. Applicable sales taxes are computed based on this figure, and the total becomes your final purchase price.

Unless specifically illustrated and noted, fine art frames are not included in the estimate or purchase price. Bonhams accepts no liability for damage or loss to frames during storage or shipment.

All sales are final and subject to the Conditions of Sale found in our catalogs, on our website, and available at the reception desk.

Payment

All buyers are asked to pay and pick up by 3pm on the business day following the auction. Payment may be made to Bonhams by cash, checks drawn on a U.S. bank, money order, wire transfer, or by Visa, MasterCard, American Express or Discover credit or charge card or debit card. All items must be paid for within 5 business days of the sale. Please note that payment by personal or business check may result in property not being released until purchase funds clear our bank.

Sales Tax

Residents of states listed in Paragraph 1 of the Conditions of Sale must pay applicable sales tax. Other state or local taxes (or compensation use taxes) may apply. Sales tax will be automatically added to the invoice unless a valid resale number has been furnished or the property is shipped via common carrier to destinations outside the states listed in

the Conditions of Sale. If you wish to use your resale license please contact Cashiers for our form.

Shipping & Removal

Buyers are to review the Offsite Sold Property Storage page for a list of lots that will be removed to the offsite warehouse of Box Brothers. These designated lots must be retrieved by the buyer prior to the day and time designated on the Offsite Sold Property Storage page. If buyers of these designated lots also buy other lots, such as decorations, rugs or works of art, these lots may also be removed to the warehouse of Box Brothers, so all lots remain together and customers can collect or ship from one location. All other items will remain at Bonhams for a period of 21 days, after which time they may be transferred to offsite storage. Wine, Jewelry, Natural History, Collectibles, 20th Century Decorative Arts, Rugs, Native American Art, Tribal Art and most Arms & Armor auctions are not included in this policy.

Box Brothers San Leandro (for San Francisco auctions only)
1471 Doolittle Drive, San Leandro, CA 94577
Tel (800) 942 6822; Fax (510) 628 8454

Box Brothers Los Angeles (for Los Angeles auctions only)
220 W. Ivy Ave, Unit C, Inglewood, Ca 90302
+1 (310) 419 9915 or +1 (800) 474 7447

Box Brothers is open Monday-Friday 8am-5pm with Saturday and Sunday hours available. Buyers must contact Box Brothers 24 hours in advance of pickup. Appointments are required.

Bonhams can accommodate shipping for certain items. Please contact our Cashiers Department for more information or to obtain a quote. Refer to Conditions of Sale for special terms governing the shipment of Arms and Wine. Shipments are made during weekday business hours up to four weeks after payment is received. Carriers are not permitted to deliver to P.O. Boxes.

International buyers are responsible for all import/export customs duties and taxes. An invoice stating the actual purchase price(s) will accompany all international purchases.

Simultaneous sale property collection notice:

If this sale previews in multiple cities, please see the title page for details regarding final location of property for collection.

Handling and Storage Charges

Please note: For sold lots removed to Box Brothers, there will be no post-sale storage charge for lots collected within 5 days from the sale date. For lots that remain at Bonhams, there will be no post-sale storage charge for lots collected within 21 days of the sale date. Handling fees may apply.

Lots uncollected at Bonhams after 21 days may be removed to the warehouse of Box Brothers. Handling and storage fees will apply.

Insurance: All sold lots are insured by Box Brothers at the sum of the hammer price plus buyer's premium.

Please refer to Box Brothers for a list of Handling, Storage and Insurance fees.

Payment

Payments for purchased lots must be made directly to Bonhams. Box Brothers will not release property to a buyer unless the buyer has paid Bonhams first. All charges for handling and storage due to Box Brothers must be paid by the time of collection from their warehouse. Please telephone Box Brothers at +1 (800) 474 7447 in advance to ascertain the amount due. **Lots will only be released from Box Brothers' warehouse with a "Release Order" obtained from the cashier's office at Bonhams.**

The removal/storage and/or shipment by Box Brothers of any lots will be subject to their standard Conditions of Business, copies of which are available at Bonhams or from Box Brothers directly.

Auction Results

Auction results are usually available on the next business day following the sale or online at www.bonhams.com/us.

CONTACTS

OFFICERS

Malcolm Barber
Co-Chairman

Matthew Girling
Chief Executive Officer

Laura King Pfaff •
Chairman Emeritus

Leslie Wright
Vice President, Trusts and Estates

Jon King
Vice President, Business Development

Vice Presidents, Specialists
Susan F. Abeles
Rupert Banner
Judith Eurich
Mark Fisher
Dessa Goddard
Jakob Greisen
Bruce McLaren
Scot Levitt
Mark Osborne
Brooke Sivo
Catherine Williamson
William O'Reilly

REPRESENTATIVES

Arizona
Terri Adrian-Hardy, (602) 684 5747

California
David Daniel
(916) 364 1645, Central Valley

California
Brooke Sivo
(760) 350 4255, Palm Springs
(323) 436 5420, San Diego

Colorado
Julie Segraves, (720) 355 3737 •

Florida
Jon King
(561) 651 7876, Palm Beach
(305) 228 6600, Miami
(954) 566 1630, Ft. Lauderdale

Georgia
Mary Moore Bethea, (404) 842 1500 •

Illinois
Ricki Harris
(773) 267 3300, (773) 680 2881

Massachusetts/New England
Amy Corcoran, (617) 742 0909

Nevada
David Daniel, (775) 831 0330

New Jersey
Alan Fausel, (973) 997 9954 •

New Mexico
Michael Bartlett, (505) 820 0701

Oregon and Idaho
Sheryl Acheson, (503) 312 6023

Pennsylvania
Alan Fausel, (610) 644 1199 •

Texas, Oklahoma and Louisiana
Amy Lawch, (713) 621 5988 •

Virginia and Washington DC
Gertraud Hechl, (540) 454 2437 •

Washington
Heather O'Mahony, (206) 218 5011

Canada, Toronto, Ontario
Kristin Hayashi, (416) 462 3741 •

Montreal, Quebec
David Kelsey, (514) 894 1138 •

**BONHAMS *
NEW YORK DEPARTMENTS
580 Madison Avenue
New York, New York 10022
(212) 644 9001**

Books & Manuscripts
Ian Ehling, (212) 644 9094
Darren Sutherland, (212) 461 6531

Chinese Works of Art & Paintings
Bruce McLaren, (917) 206 1677
Ming Hua, (646) 837 8132

Collectors' Motorcars & Motorcycles
Rupert Banner, (212) 461 6515
Eric Minoff, (917) 206 1630
Evan Ide, (917) 340 4657
Michael Caimano, (917) 206 1615

**Fine Art
American**
Elizabeth Goodridge, (917) 206 1621

Contemporary
Jeremy Goldsmith, (917) 206 1656
Megan Murphy, (212) 644 9020

European Paintings
Madalina Lazen, (212) 644 9108

Impressionist & Modern
William O'Reilly, (212) 644 9135

Himalayan Art
Mark Rasmussen, (917) 206 1688

Japanese Works of Art
Jeff Olson, (212) 461 6516

Jewelry
Susan F. Abeles, (212) 461 6525
Caroline Morrissey, (212) 644 9046
Camille Barbier, (212) 644 9035

Maritime Paintings & Works of Art
Gregg Dietrich, (212) 644 9001 •

Modern Decorative Arts & Design
Benjamin Walker, (212) 710 1306

Photographs & Prints
Deborah Ripley, (917) 206 1690
Laura Paterson, (917) 206 1653

Russian Fine & Decorative Arts
Yelena Harbick, (212) 644 9136

Trusts & Estates
Sherri Cohen, (917) 206 1671

Watches & Clocks
Jonathan Snellenburg, (212) 461 6530
Jonathan Hochman, (917) 206 1618

CLIENT SERVICES DEPARTMENT

San Francisco
(415) 861 7500
(415) 861 8951 fax
Monday - Friday, 9am to 5pm

Los Angeles
(323) 850 7500
(323) 850 6090 fax
Monday - Friday, 9am to 5pm

**BONHAMS *
SAN FRANCISCO DEPARTMENTS
220 San Bruno Avenue
San Francisco California 94103
(415) 861 7500**

20th Century Fine Art
Dane Jensen, (323) 436 5451

Arms & Armor
Paul Carella, (415) 503 3360

Asian Works of Art
Dessa Goddard, (415) 503 3333

Books & Manuscripts
Adam Stackhouse, (415) 503 3266

Chinese Works of Art
Daniel Herskee, (415) 503 3271

Jewelry & Watches
Shannon Beck, (415) 503 3306

Collectors' Motorcars & Motorcycles
Mark Osborne, (415) 503 3353
Jakob Greisen, (415) 503 3284

Museum Services
Laura King Pfaff, (415) 503 3210

Native American Art
Ingmars Lindbergs, (415) 503 3393

**California & Western
Paintings & Sculpture**
Aaron Bastian, (415) 503 3241

Photographs & Prints
Judith Eurich, (415) 503 3259

Space History
Adam Stackhouse, (415) 503 3266

Trusts & Estates
Victoria Richardson, (415) 503 3207
Celeste Smith, (415) 503 3214

Wine
Erin McGrath, (415) 503 3319

Writing Instruments
Ivan Briggs, (415) 503 3255

**BONHAMS *
LOS ANGELES DEPARTMENTS
7601 W. Sunset Boulevard
Los Angeles California 90046
(323) 850 7500**

20th Century Decorative Arts
Angela Past, (323) 436 5422

20th Century Fine Art
Alexis Chompaisal, (323) 436 5469

African, Oceanic & Pre-Columbian Art
Fredric W. Backlar, (323) 436 5416 •

Books & Manuscripts
Catherine Williamson, (323) 436 5442

Coins & Banknotes
Paul Song, (323) 436 5455

Contemporary Art
Dane Jensen, (323) 436 5451

Entertainment Memorabilia
Catherine Williamson, (323) 436 5442
Dana Hawkes, (978) 283 1518

Furniture & Decorative Arts
Andrew Jones, (323) 436 5432
Jennifer Kurtz, (323) 436 5478

Jewelry & Watches
Dana Ehrman, (323) 436 5407
Alexis Vourvoulis, (323) 436 5483

Collectors' Motorcars & Motorcycles
Nick Smith, (323) 436 5470

Photographs & Prints
Morisa Rosenberg, (323) 436 5435

Natural History
Thomas E. Lindgren, (310) 469 8567 •
Claudia Florian, G.J.G., (323) 436 5437 •

**California & Western
Paintings & Sculpture**
Scot Levitt, (323) 436 5425

Paintings - European
Mark Fisher, (323) 436 5488

Silver
Aileen Ward, (323) 436 5463

Trusts & Estates
Leslie Wright, (323) 436 5408
Joseph Francaviglia, (323) 436 5443

• * Indicates saleroom
• Indicates independent contractor

The following information is recorded
and available 24 hours a day, 7 days a
week, through our telephone system:
- Auction and Preview Information
- Directions to Bonhams's salesrooms
- Automated Auction Results

Auction Registration Form

(Attendee / Absentee / Online / Telephone Bidding)

Please circle your bidding method above.

<input type="checkbox"/>	<input type="checkbox"/>	<input type="checkbox"/>	<input type="checkbox"/>
--------------------------	--------------------------	--------------------------	--------------------------

Paddle number (for office use only)

General Notice: This sale will be conducted in accordance with Bonhams Conditions of Sale, and your bidding and buying at the sale will be governed by such terms and conditions. Please read the Conditions of Sale in conjunction with the Buyer's Guide relating to this sale and other published notices and terms relating to bidding. Payment by personal or business check may result in your property not being released until purchase funds clear our bank. Checks must be drawn on a U.S. bank.

Notice to Absentee Bidders: In the table below, please provide details of the lots on which you wish to place bids at least 24 hours prior to the sale. Bids will be rounded down to the nearest increment. Please refer to the Buyer's Guide in the catalog for further information relating to instructions to Bonhams to execute absentee bids on your behalf. Bonhams will endeavor to execute bids on your behalf but will not be liable for any errors or non-executed bids.

Notice to First Time Bidders: New clients are requested to provide photographic proof of ID - passport, driving license, ID card, together with proof of address - utility bill, bank or credit card statement etc. Corporate clients should also provide a copy of their articles of association / company registration documents, together with a letter authorizing the individual to bid on the company's behalf. Failure to provide this may result in your bids not being processed. For higher value lots you may also be asked to provide a bankers reference.

Notice to online bidders: If you have forgotten your username and password for www.bonhams.com, please contact Client Services.

If successful

I will collect the purchases myself ☐
Please contact me with a shipping quote (if applicable) ☐
I will arrange a third party to collect my purchase(s) ☐

Please email or fax the completed Registration Form and requested information to:

Bonhams Client Services Department
7601 W. Sunset Blvd
Los Angeles, California 90046
Tel +1 (323) 850 7500
Fax +1 (323) 850 6090
bids.us@bonhams.com

Bonhams

Sale title: California Jewels	Sale date: Tuesday April 10, 2018
Sale no. 24860	Sale venue: Los Angeles
General Bid Increments: \$10 - 200by 10s \$200 - 500by 20 / 50 / 80s \$500 - 1,000by 50s \$1,000 - 2,000by 100s \$2,000 - 5,000by 200 / 500 / 800s \$5,000 - 10,000by 500s \$10,000 - 20,000by 1,000s \$20,000 - 50,000by 2,000 / 5,000 / 8,000s \$50,000 - 100,000by 5,000s \$100,000 - 200,000by 10,000s above \$200,000at the auctioneer's discretion The auctioneer has discretion to split any bid at any time.	
Customer Number	Title
First Name	Last Name
Company name (to be invoiced if applicable)	
Address	
City	County / State
Post / Zip code	Country
Telephone mobile	Telephone daytime
Telephone evening	Fax
Telephone bidders: indicate primary and secondary contact numbers by writing ① or ② next to the telephone number.	
E-mail (in capitals) _____	
By providing your email address above, you authorize Bonhams to send you marketing materials and news concerning Bonhams and partner organizations. Bonhams does not sell or trade email addresses.	
I am registering to bid as a private client <input type="checkbox"/>	I am registering to bid as a trade client <input type="checkbox"/>
Resale: please enter your resale license number here _____ We may contact you for additional information.	

SHIPPING	
Shipping Address (if different than above):	
Address: _____	Country: _____
City: _____	Post/ZIP code: _____

Please note that all telephone calls are recorded.

Type of bid (A-Absentee, T-Telephone)	Lot no.	Brief description (In the event of any discrepancy, lot number and not lot description will govern.) If you are bidding online there is no need to complete this section.	MAX bid in US\$ (excluding premium and applicable tax) Emergency bid for telephone bidders only*

You instruct us to execute each absentee bid up to the corresponding bid amount indicated above.

* Emergency Bid: A maximum bid (exclusive of Buyer's Premium and tax) to be executed by Bonhams only if we are unable to contact you by telephone or should the connection be lost during bidding.

BY SIGNING THIS FORM YOU AGREE THAT YOU HAVE READ AND UNDERSTAND OUR CONDITIONS OF SALE AND SHALL BE LEGALLY BOUND BY THEM, AND YOU AGREE TO PAY THE BUYER'S PREMIUM, ANY APPLICABLE TAXES, AND ANY OTHER CHARGES MENTIONED IN THE BUYER'S GUIDE OR CONDITIONS OF SALE. THIS AFFECTS YOUR LEGAL RIGHTS.

Your signature:

Date:



Bonhams

7601 W. Sunset Boulevard
Los Angeles, California 90046

+1 323 850 7500

+1 323 850 6090 (fax)

