

# Bonhams



New York Jewels

New York | July 28, 2020



# New York Jewels

New York | Tuesday, July 28 2020, 10am

## BONHAMS

580 Madison Avenue  
New York, New York 10022  
[bonhams.com](http://bonhams.com)

## PREVIEW

Bonhams' operations and facilities are currently subject to government restrictions and arrangements may be subject to change. In accordance with Covid-19 guidelines, lots will be made available for in-person viewing by appointment only on the following dates:

### Los Angeles

July 10 - 14, 2020

### New York

July 24 - 27, 2020

Please contact the specialist department to arrange an appointment before visiting our premises. Additional lot information and photographs are available from the specialist department upon request.

## SALE NUMBER:

26206

**CATALOG:** \$35.00

## CUSTOMS DUTY

Customs Duty at the applicable rate and associated import fees are payable by the buyer on all lots marked with an omega symbol (Ω).

## BIDS

+1 (212) 644 9001  
+1 (212) 644 9009 fax  
[bids.us@bonhams.com](mailto:bids.us@bonhams.com)

To bid via the internet please visit [www.bonhams.com](http://www.bonhams.com)

## TELEPHONE BIDDING

Telephone bidding will only be accepted on a lot with a low estimate in excess of \$1000.

Please note that bids should be submitted no later than 24hrs prior to the sale. New Bidders must also provide proof of identity when submitting bids. Failure to do this may result in your bid not being processed.

## BIDDING

We are currently able to accept bids in advance, on the telephone and online. We are unable to offer in-person bidding for this auction. Please register to bid by contacting [bid.us@bonhams.com](mailto:bid.us@bonhams.com).

Please see pages 83 to 87 for bidder information including conditions of sale, after-sale collection and shipment.

## PAYMENT

We currently ask that payments are made electronically prior to collection. For further information, please contact [invoices.us@bonhams.com](mailto:invoices.us@bonhams.com)

## INQUIRIES

Jean Ghika  
Global Head of Jewelry  
[jean.ghika@bonhams.com](mailto:jean.ghika@bonhams.com)

### New York

+1 (212) 461 6526  
Brett O'Connor, Senior International Jewelry Director  
Caroline Morrissey,  
Head of Sales, US Jewelry  
Leslie Roskind, Senior Specialist  
Stephanie Ibonnet, Administrator

### Los Angeles

+1 (323) 436 5424  
Emily Waterfall, Director  
Eleanor Walper, Specialist  
Augustus Poppleton, Cataloger  
Alexandra Schettini, Administrator

## COLLECTION

Successful buyers with Los Angeles shipping addresses will have their purchases shipped to the Bonhams Los Angeles office for pick-up and/or further delivery. If you have a Los Angeles shipping address and do not want your purchase sent there for collection please notify us directly by Wednesday July 29, 2020. Purchases will be available for pick-up in Los Angeles on Friday July 31, 2020.

## ILLUSTRATIONS

Front cover: lots 165, 166  
Inside front: lots 4, 6  
Current page: lot 139  
Session page: lot 36  
Back cover: lots 148, 149  
Inside back cover: lots 113, 77, 71

## REGISTRATION IMPORTANT NOTICE

Please note that all customers, irrespective of any previous activity with Bonhams, are required to complete the Bidder Registration Form in advance of the sale. The form can be found at the back of every catalogue and on our website at [www.bonhams.com](http://www.bonhams.com) and should be returned by email or post to the specialist department or to the bids department at [bids.us@bonhams.com](mailto:bids.us@bonhams.com). To bid live online and / or leave internet bids please go to [www.bonhams.com/auctions/26206](http://www.bonhams.com/auctions/26206) and click on the Register to bid link at the top left of the page.



Bonhams

© 2020, Bonhams & Butterfields Auctioneers Corp.;

All rights reserved.

Auctioneer: Brett O'Connor



## Including Property From

Property of a Lady

Property from the Estate of Phyllis S. Ames

Property of a Gentleman

Property from the Estate of Monique Van Vooren Purcell

Property of a Distinguished Australian Family

Property of an English Lady

Property from the Collection of Edward and Mildred Lewis, Los Angeles, CA

Property from the Estate of Diahann Carroll

Property from the Estate of Yvonne Weaver

Property from the Lathrop Estate

Property from the Estate of Lee Meyer

Property from the Estate of Mrs. Antoinette Quilleret

Property from an Oregon Lady

Property from a New Mexico Estate

Property of a Midwest Collector



# INDEX

NAME	LOT NUMBER
Albert Lipton	60
Andreoli	22
Audemars Piguet	13
Boucheron	37, 140
Buccellati	1, 4, 6, 8, 10, 73
Bulgari	32, 59, 67, 69, 72, 78, 90
Cartier	19, 21, 34, 36, 63, 71, 76, 113, 116, 120, 132, 137, 139, 162
Chanel	103
Charlton & Co.	35
David Webb	2, 17, 51, 79, 93, 126
de Grisogono	56
De Vroomen	30
Harry Winston	109
Jaeger-LeCoultre	32
J.E. Caldwell & Co.	68
John Rubel	164, 165, 166
Marchak	119
Mauboussin	143
Oscar Heyman & Brothers	88, 151
Paolo Gucci	95
Patek Philippe & Co.	47
Piaget	12, 142
Raymond Yard	15, 47, 130
Rolex	58
Tiffany & Co.	31, 91, 142, 150, 153, 160
Tiffany & Co., Schlumberger	27, 155, 157, 159
Van Cleef & Arpels	5, 7, 9, 12, 26, 28, 29, 33, 45, 48, 61, 80, 81, 128, 133, 144, 145
Verdura	66

DIAMOND GRADING

COLOR

GIA	CIBJO	UK TRADITIONAL
D	Exceptional White +	Finest White
E	Exceptional White	Finest White
F	Rare White +	Fine White
G	Rare White	Fine White
H	White	White
I	Slightly Tinted White	Commercial White
J	Slightly Tinted White	Top Silver Cape
K	Tinted White	Top Silver Cape
L	Tinted White	Silver Cape
M TO N	Tinted Color	Light Cape
O TO R	Tinted Color	Cape
R TO Z	Tinted Color	Dark Cape

CLARITY

IF	Internally Flawless	No inclusions and only insignificant surface blemishes when viewed under 10X magnification
VVS1 - VVS2	Very Very Slightly Included	Minute inclusions that are incredibly difficult to see under 10X magnification, generally only visible from the back of the stone and may be removed easily by repolishing
VS1 - VS2	Very Slightly Included	Minor inclusions that range from difficult (VS1) to slightly easier (VS2) to see under 10X magnification
SI1 - 2	Slightly Included	Noticeable inclusions that are easy (SI1) or very easy (SI2) to see under 10X magnification
I1 - 3	Obvious Inclusions	Obvious inclusions that are easily visible under 10X magnification and in some cases may even be seen without magnification

RING SIZES

ENGLISH	METRIC	AMERICAN	FRENCH/JAPANESE
A	37.8252	½	-
A½	38.4237	¾	-
B	39.0222	1	-
B½	39.6207	1¼	-
C	40.2192	1½	-
C½	40.8177	1¾	-
D	41.4162	2	1
D½	42.0147	2¼	2
E	42.6132	2½	-
E½	43.2117	2¾	3
F	43.8102	3	4
F½	44.4087	3¼	-
G	45.0072	3½	5
G½	45.6057	3¾	-
H	46.2042	3½	6
H½	46.8027	4	-
I	47.4012	4¼	7
I½	47.9997	4½	8
J	48.5982	4¾	-
J½	49.1967	5	9
K	49.7952	5¼	10
K½	50.3937	5½	-
L	50.9922	5¾	11
L½	51.5907	6	-
M	52.1892	6¼	12
M½	52.7877	6½	13
N	53.4860	6¾	-
N½	54.1044	7	14
O	54.7428	7	15
O½	55.3812	7¼	-
P	56.0196	7½	16
P½	56.6580	7¾	-
Q	57.2964	8	17
Q½	57.9348	8¼	18
R	58.5732	8½	-
R½	59.2116	8¾	19
S	59.8500	9	20
S½	60.4884	9¼	-
T	61.1268	9½	21
T½	61.7652	9¾	22
U	62.4026	10	-
U½	63.0420	10¼	23
V	63.6804	10½	24
V½	64.3188	10¾	-
W	64.8774	11	25
W½	65.4759	11¼	-
X	66.0744	11½	26
X½	66.6729	11¾	-
Y	67.2714	12	-
Y½	67.8699	12¼	-
Z	68.4684	12½	-



# Property from the Estate of Phyllis S. Ames

Lots 1 - 14



1  
**A SET OF 18K GOLD RIGATO GOLD JEWELRY, BUCCELLATI, ITALY**  
Comprising a necklace, composed of graduated 18k gold beads in lustrous rigato ground; and a pair of ear clips en suite; *signed Buccellati; accompanied by a pair of signed pouches; gross weight approximately 113.85 grams; length of necklace 17 in.; length of ear clips 15/16 in.*

**\$4,000 - 6,000**

2  
**AN ENAMEL, JADE, RUBY AND DIAMOND RING, DAVID WEBB**  
Centering a jade disc studded with a bezel-set cabochon ruby, accented with round brilliant-cut diamonds, to the shank applied with black enamel detail; *by David Webb, no. KA21; estimated total diamond weight 1.63 carats; mounted in 18k gold and platinum; size 6 (fitted with sizing band)*

**\$4,000 - 6,000**

Accompanied by a letter of authenticity from David Webb dated 6 July 2020.



3

3  
**A DIAMOND AND 18K WHITE GOLD RING**  
The flat rectangular top set with three rows of baguette-cut diamonds, the borders and shoulders set with round brilliant-cut diamonds; *estimated total diamond weight 1.50 carats; size 7*

**\$1,000 - 1,500**



2





4

4

**A DIAMOND, EMERALD AND ENAMEL BEE BROOCH, BUCCELLATI, ITALY**

The sculpted bee set with cabochon emerald eyes and blue enamel stripes, the thorax and semi-articulated openwork wings set with single-cut diamonds; *signed Buccellati*; estimated total diamond weight 1.10 carats; gross weight approximately 42.07 grams; mounted in 18k gold; length 2 7/8 in.

**\$5,000 - 8,000**



5

5

**A PAIR OF ONYX AND DIAMOND EAR CLIPS, VAN CLEEF & ARPELS**

Each set with a polished onyx ring between gold rope twist borders, the center set with a cluster of round brilliant-cut diamonds; *signed Van Cleef & Arpels NY, no. 439225*; estimated total diamond weight 1.60 carats; mounted in 18k gold; width 1 1/8 in.

**\$3,500 - 5,500**



6

6

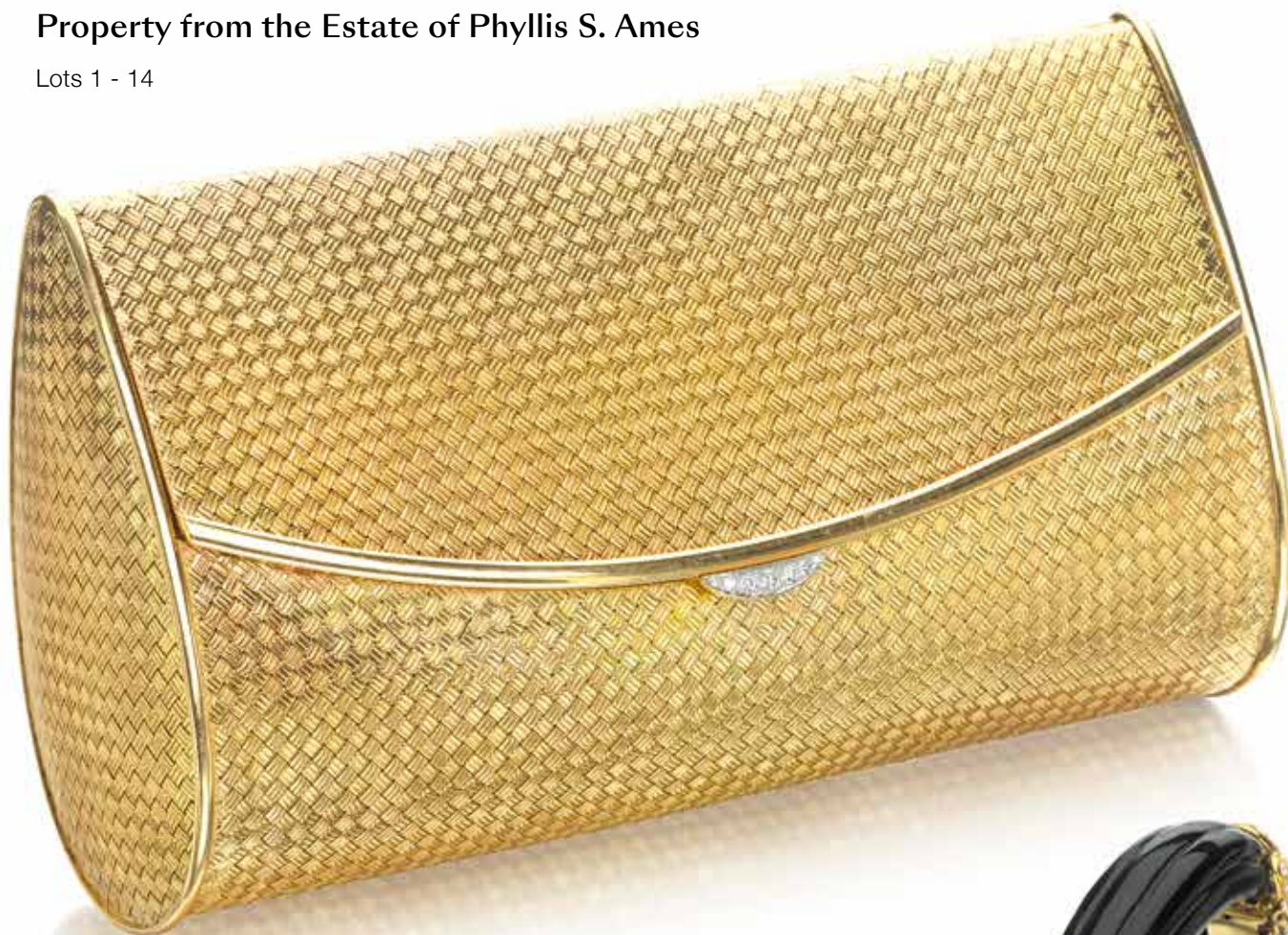
**AN 18K GOLD, RUBY AND DIAMOND BANGLE, BUCCELLATI, ITALY**

The wide hinged bangle set with circular-cut rubies and round brilliant-cut diamonds, each within an elaborate modellato collet on a lustrous rigato gold ground; *signed Buccellati*; accompanied by a signed pouch; estimated total diamond weight 1.60 carats; mounted in 18k bi-colored gold; inner circumference 6 1/2 in.

**\$18,000 - 28,000**

## Property from the Estate of Phyllis S. Ames

Lots 1 - 14



7

7  
**A 14K GOLD AND DIAMOND CLUTCH, VAN CLEEF & ARPELS**

Of basket weave design, measuring approximately 7 x 4 1/8 x 2 1/4 in., the thumbpiece highlighted with round brilliant-cut diamonds, opening to reveal a mirror; *signed VCA, no. 30V169.1; gross weight approximately 445.37 grams*

**\$10,000 - 15,000**



8

8  
**A PAIR OF 18K GOLD AND DIAMOND 'CLASSICA' EAR CLIPS, BUCCELLATI, ITALY**

Of button design, each centering a round brilliant-cut diamond, within an elaborate modellato white gold collet on a lustrous rigato yellow gold ground; *signed Buccellati; accompanied by signed pouch; gross weight approximately 13.72 grams; length 15/16 in.*

**\$2,500 - 3,500**



9

9  
**AN ONYX AND DIAMOND BANGLE, VAN CLEEF & ARPELS**

The hinged bangle composed of carved onyx segments with scalloped gold and round brilliant-cut diamond accents set at intervals; *signed Van Cleef & Arpels NY, no. 144065; estimated total diamond weight 9.50 carats; mounted in 18k gold; inner circumference 6 1/4 in.*

**\$8,000 - 12,000**





# Property from the Estate of Phyllis S. Ames

Lots 1 - 14



10  
**AN 18K GOLD, CITRINE AND RUBY RING, BUCCELLATI, ITALY**  
Set with a rectangular-cut citrine, measuring approximately 23.80 x 14.20 x 12.85 mm, framed by numerous circular-cut rubies, each within an elaborate modellato collet on a rigato ground; *signed Buccellati*; accompanied by signed fitted box; size 5 1/2

**\$3,500 - 5,500**

11  
**A DIAMOND BRACELET**  
Of foliate design, set with round brilliant-cut diamonds; *estimated total diamond weight 10.20 carats*; mounted in 18k gold and platinum; length 7 1/8 in.

**\$6,000 - 10,000**

12  
**AN 18K GOLD, DIAMOND, AND TIGER'S EYE WRISTWATCH, PIAGET, VAN CLEEF & ARPELS**  
With mechanical movement, the oval dial set with single-cut diamonds and tiger's eye to the round brilliant-cut diamond bezel extending an integrated bracelet; *dial signed Piaget, Van Cleef & Arpels*, caseback nos. 9236A6 and 306673, bracelet and clasp with indistinct numbers; with Swiss assay mark; length 6 1/4

**\$1,500 - 2,000**





13

**13  
AN 18K WHITE GOLD WRISTWATCH,  
AUDEMARS PIGUET**

With mechanical movement, the circular skeleton case with visible movement and black steel bands, completed by a woven gold bracelet and buckle; caseback and movement signed Audemars Piguet, caseback no. 36203, with Swiss assay mark; length 6 1/4 in.

**\$1,500 - 2,500**



14

**14  
A CHRYSOPRASE, ONYX AND DIAMOND NECKLACE,  
CIRCA 1970**

Composed of alternating onyx and round brilliant-cut diamond-set links between cabochon chrysoprase spacers with diamond accents, suspending a similarly-set detachable pendant of double hoop design; numbered NY 4743; estimated total diamond weight 19.00 carats; mounted in 18k gold; length of necklace 21 in.; length of pendant 2 3/4 in.

**\$15,000 - 25,000**



15



17



16

15

**A DIAMOND NECKLACE,  
RAYMOND YARD**

Designed as a series of round brilliant-cut diamonds to the central larger round brilliant and baguette-cut diamonds with a bezel-set marquise-cut diamond; *signed Yard*; *estimated total diamond weight 8.26 carats*; *length 17 3/4*

**\$4,000 - 6,000**

16

**A PAIR OF OVAL-CUT DIAMOND BANDS**

Each set with sixteen oval-cut diamonds; *estimated weight of the diamonds 6.22 and 6.12 carats*; *mounted in platinum*; *both size 6*

**\$17,000 - 22,000**

17

**AN ENAMEL AND DIAMOND RING,  
DAVID WEBB**

Of fluted white enamel dome decorated with round brilliant-cut diamonds; *signed Webb*; *fitted with sizing band*; *estimated total diamond weight: 1.20 carats*; *mounted in platinum and 18k gold*; *size 7 1/2*

**\$4,000 - 7,000**





18

18

#### A DIAMOND AND RUBY RING

Bezel-set with an oval-cut ruby within an old European-cut diamond surround to the three-stone diamond shoulders; *estimated calculated weight of ruby 0.51 carat; mounted in 18k white gold; size 6*

**\$3,500 - 5,500**

Accompanied by AGL report #1106125, dated 27 January 2020, stating that the ruby is of Burma (Myanmar) origin, with no gemological evidence of heat.

19

#### AN 18K WHITE GOLD AND DIAMOND NECKLACE, CARTIER

The triple-strand necklace composed of white gold beads, measuring approximately 4.10 mm, accented with gypsy-set round brilliant-cut diamonds; *signed Cartier, no. 829282, with maker's mark and French assay marks; accompanied by signed fitted box; estimated total diamond weight 4.80 carats; length 14 3/4 in.*

**\$7,000 - 10,000**



20

20<sup>Y</sup>

#### A PAIR OF DIAMOND AND MOTHER-OF-PEARL EARRINGS

Each designed as a mother-of-pearl crescent, with round brilliant-cut diamond trim, to the pear-shaped diamond terminals; *estimated weight of the diamonds 5.30 carats; mounted in 18k white gold*

**\$5,000 - 8,000**

21

#### AN 18K WHITE GOLD AND DIAMOND BRACELET, CARTIER

The articulated bracelet composed of thirty-seven white gold beads, each accented with a gypsy-set round brilliant-cut diamond; *signed Cartier, no. 24644; with maker's mark; accompanied by signed fitted box; estimated total diamond weight 1.50 carats; length 7 in.*

**\$3,000 - 5,000**



## PROPERTY OF AN ENGLISH LADY

22

### A PAIR OF DIAMOND EAR PENDANTS, ANDREOLI

Of openwork pendant design, set with round brilliant-cut diamonds; signed *Andreoli*, Made in Italy; estimated total diamond weight 7.60 carats; mounted in 18k white gold; length 1 3/4 in.

**\$5,000 - 7,000**

23

### A SAPPHIRE AND DIAMOND RING

Set with an oval-cut sapphire, weighing approximately 9.06 carats, within a round brilliant-cut diamond surround; estimated diamond weight 1.50 carats, mounted in 18k white gold; size 7 1/2

**\$6,000 - 9,000**

Accompanied by GIA report #6204957595, dated 12 March 2020, stating that the sapphire has no indications of heating.

24

### A PAIR OF ART DECO AQUAMARINE AND DIAMOND BRACELETS, CIRCA 1930

Each designed as a series of four modified rectangular-cut aquamarines, flanked to each side by smaller aquamarines, with single and old European-cut diamond buckle spacers; estimated total diamond weight 7.42 carats; mounted in platinum; length 7 1/2 in. each (may be worn together as a choker)

**\$30,000 - 40,000**

25

### A SAPPHIRE AND DIAMOND FLOWER RING

Designed as a flower with eight pear-shaped sapphire petals to the central round brilliant-cut diamond, weighing approximately 0.58 carat, and pavé-set diamond detail; estimated total weight of the sapphires 8.40 carats; mounted in platinum; size 6 1/2

**\$12,000 - 18,000**

Accompanied by AGL report #CS63455, dated 01 October 2014, stating that the sapphires are of Ceylon (Sri Lanka) origin, with no gemological evidence of heat.

Accompanied by GIA report #2155362465, dated 08 April 2013, stating that the diamond is F color, VS1 clarity.







26



27



28

**26  
AN 18K GOLD, TURQUOISE, AND  
DIAMOND PIN, VAN CLEEF & ARPELS,  
CIRCA 1965**

Designed as a bouquet of cabochon turquoise and round brilliant-cut diamond flowers with gold stems gathered by a gold ribbon; *signed Van Cleef & Arpels, no. CS6115, with indistinct French assay mark; length 2 1/2 in.*

**\$4,000 - 6,000**

**27  
A PAIR TURQUOISE AND DIAMOND EAR  
CLIPS, TIFFANY & CO., SCHLUMBERGER  
STUDIOS**

Each designed as double wings with cabochon turquoise to the round brilliant-cut diamonds and gold detail; *signed Tiffany & Co., Schlumberger Studios; mounted in platinum and 18k gold; accompanied by a signed box*

**\$6,000 - 10,000**

**28  
AN 18K GOLD AND TURQUOISE  
NECKLACE, VAN CLEEF & ARPELS,  
CIRCA 1965**

The front designed as a graduated series of textured gold flower heads, each with cabochon turquoise and round brilliant-cut diamond detail to the foliate backchain; *signed VCA, no. 4V122.1; length 16 in.*

**\$12,000 - 18,000**



29

29  
**AN 18K GOLD AND DIAMOND BARRETTE,  
 VAN CLEEF & ARPELS**

Designed as two intertwined rows of round brilliant-cut diamonds;  
*signed VCA France; estimated total diamond weight: 1.30 carats;  
 length 2 in.*

**\$3,000 - 5,000**



30

**PROPERTY OF A LADY**

30  
**A GROUP OF GEM-SET JEWELRY**

Comprising a torsade necklace, composed of eleven strands of oblong lapis lazuli beads to the alternating round brilliant-cut diamond and turquoise scrolled clasp; and a pair of ear clips, each bezel-set with a mabé pearl to the blue guillouché enamel and round brilliant-cut diamond surround; *ear clips by De Vroomen; mounted in 18k gold; necklace length adjustable*

**\$2,500 - 4,500**



31

31  
**AN 18K GOLD, RUBY AND DIAMOND  
 PENDANT BROOCH, TIFFANY & CO.**  
 The flower brooch centering a cluster of round  
 brilliant-cut diamonds, radiating gold petals  
 accented with circular-cut rubies; *signed*  
*Tiffany & Co.*; mounted in 18k gold; length  
 2 1/8 in.  
**\$3,000 - 5,000**



32

32  
**AN 18K GOLD, RUBY AND ENAMEL  
 'SERPENTI' WATCH, BULGARI,  
 JAEGER-LECOULTRE**  
 The blue and green enamel scaled snake with  
 pear-shaped ruby eyes; the hidden watch,  
 with self-winding movement, the golden  
 circular dial with baton chapters; *bracelet*  
*signed Bulgari*; watch dial signed Jaeger-  
 Lecouture  
**\$75,000 - 95,000**



33

33 Y  
**A GROUP OF SEVEN DIAMOND  
 AND GEM-SET 'PHILIPPINE' RINGS,  
 VAN CLEEF & ARPELS**  
 Each ring set with a central panel of circular-  
 cut diamonds and gold wire-work detail, to  
 the wood, onyx, white coral, pink coral, red  
 coral, lapis lazuli or gold shoulders; *each*  
*signed oval, VCA*; estimated total diamond  
 weight 2.90 carats; mounted in 18k gold  
**\$11,000 - 18,000**



## Property of an English Lady

Lots 34 - 40



34



35



36



37

34

### **A DIAMOND CIRCLE BROOCH, CARTIER**

Designed as a circle, set with twenty-four round brilliant-cut diamonds; signed Cartier; estimated total diamond weight 1.70 carats; mounted in platinum; length 1 in.

**\$2,000 - 3,000**

35

### **A DIAMOND PENDANT NECKLACE, CHARLTON & CO.**

The magnified glass pendant set within a border of old European-cut diamonds, the long chain set at intervals with alternating fancy links and old European-cut diamonds; signed C & Co., no. F4773; estimated total diamond weight 2.00 carats; mounted in platinum; length of chain 36 in.; length of pendant 1 9/16 in.

**\$2,000 - 3,000**

Charlton & Co. were an American jeweler founded in New York in 1909 by John W. Charlton. Having gained experience working with various firms, he opened his eponymous store, J.W. Charlton, on Fifth Avenue in Manhattan, changing the name to Charlton & Co. when business partner Robert Chapin joined him in the company. The firm is perhaps best known for their fine Art Deco jewels which were the toast of 1920's New York.

36

### **A DIAMOND AND SAPPHIRE BROOCH, CARTIER**

Designed as a fleur-de-lys, set with round brilliant-cut diamonds and circular-cut sapphires to a gold frame; signed Cartier Inc, no. 50996, with André Vassort maker's mark; estimated total diamond weight 3.40 carats; mounted in 18k gold and platinum; length 2 1/2 in.

**\$9,000 - 12,000**

37

### **A DIAMOND AND RUBY BROOCH, BOUCHERON, 1954**

Designed as a feather, set with round brilliant-cut diamonds and circular-cut rubies; signed Boucheron, with English hallmarks and maker's mark; mounted in 18k gold; length 2 3/8 in.

**\$2,500 - 4,500**

## Property of an English Lady

Lots 34 - 40



39



38



40

38

### **A DIAMOND BROOCH**

Of stylized scrollwork design, set with round brilliant and baguette-cut diamonds; *estimated total diamond weight 12.80 carats; mounted in platinum; length 2 5/8 in.*

**\$8,000 - 12,000**

39

### **A DIAMOND AND SPINEL BROOCH, LATE 19TH CENTURY**

Designed as a crescent, set with old mine-cut diamonds and cushion-shaped spinels, with rose-cut diamond detail; *with French assay marks; estimated total diamond weight 3.50 carats; mounted in 18k gold and silver; length 2 in.*

**\$3,000 - 5,000**

40

### **A DIAMOND BROOCH, CIRCA 1880**

Designed as an ear of wheat, set with pear-shaped and old mine-cut diamonds, the stem set with rose-cut diamonds; *estimated total diamond weight 4.50 carats; mounted in silver topped 14k gold; length 3 in.*

**\$4,000 - 8,000**





41

**41  
A DIAMOND AND PEARL NECKLACE,  
LATE 19TH CENTURY**

The front of the necklace of foliate and floral design, set with old mine, rose and single-cut diamonds, supporting seven pendants terminating in a drop-shaped pearl, measuring approximately from 5.50 to 8.20 mm wide, further highlighted with an en tremblant flower centerpiece, connected throughout by knife-edge links; *estimated remaining diamond weight 8.00 carats; mounted in silver topped 14k gold; length 17 1/4 in.*

**\$4,000 - 6,000**

Pearls have not been tested for natural origin.



43



42

**42  
A PAIR OF SILVER AND DIAMOND  
EAR CLIPS**

Each designed as old mine and old European-cut diamond flower with a central diamond; *1 1/4 in.*

**\$2,000 - 3,000**

**43  
A DIAMOND PIN, CIRCA 1820**

The old mine-cut diamond flower set en tremblant, to the diamond-set stem and leaves; *2 1/2 in.*

**\$8,000 - 12,000**





44  
**AN OPAL, GOLD AND ENAMEL PENDANT NECKLACE, CIRCA 1900**

The shield-shaped black opal, within a frame of gold irises accented by green enamel, extending to an openwork design of irises on the reverse, supporting a pear-shaped drop, suspended from a gold chain with iris detail at intervals; *mounted in 18k gold; length 16 in.*

**\$12,000 - 18,000**



45  
**A SET OF THREE 18K GOLD AND DIAMOND BANGLES, VAN CLEEF & ARPELS, 1972**

Each designed as a hinged bangle, with alternating textured gold and round brilliant-cut diamond panels; *signed V.C.A., nos. 23543, 23544 and 23546; with French assay and maker's marks; estimated total diamond weight 10.80 carats; diameter 2 1/4 in. each*

**\$35,000 - 45,000**



46  
**AN OPAL AND DIAMOND RING**

Bezel-set with an oval opal within a frame of old mine-cut diamonds; *mounted in silver topped 14k gold; size 4 3/4*

**\$5,000 - 7,000**



47

**AN EMERALD AND DIAMOND WATCH,  
RAYMOND YARD, PATEK PHILIPPE & CO.,  
CIRCA 1955**

With mechanical movement, the silvered rectangular dial with Arabic numerals, to the calibr -cut diamond bezel enhanced by graduated baguette-cut diamonds to the cut-cornered square-cut emeralds with diamond detail extending a double platinum staple-link bracelet: *dial signed Yard; movement signed Patek Philippe & Co., no.842636; mounted in platinum; length 6 in.*

**\$2,500 - 3,500**

cf. Natasha Kuzmanovic, Yard, *The Life and Magnificent Jewelry of Raymond C. Yard* (New York: The Vendome Press, 2007) page 124.

48

**A CULTURED PEARL AND DIAMOND  
BRACELET, VAN CLEEF & ARPELS**

Composed of three strands of cultured pearls, measuring approximately from 6.10 to 7.10 mm, the clasp centrally set with an old mine-cut diamond, weighing approximately 1.76 carats, to a surround of old mine and baguette-cut diamonds; *signed Van Cleef & Arpels, NY, no. 18763S.0; mounted in 18k white gold; length 8 3/8 in.*

**\$7,000 - 10,000**

49

**A DIAMOND RING, FRANCE, CIRCA 1915**

Bezel-set with an old European-cut diamond, to the pierced millegrain-set navette-shaped surround set with single-cut diamonds; *with French assay mark; estimated total diamond weight 1.45 carats; mounted in platinum; size 5 1/4*

**\$3,000 - 5,000**







50

#### PROPERTY OF A LADY

##### 50 A PAIR OF 18K GOLD, DIAMOND AND GEM-SET EARRINGS

Each designed as a series of pavé-set diamond layered sculptural panels, each bezel-set with a green tourmaline, pink tourmaline and yellow beryl, to the gold border; length 2 7/8 in.

**\$2,500 - 3,500**



51

##### 51 A GOLD, ENAMEL, DIAMOND, AND EMERALD SNAKE RING, DAVID WEBB

The coiled snake applied with burgundy enamel scales, the head and tail set with round brilliant-cut diamonds, completed with two cabochon emerald eyes; *signed Webb*; fitted with sizing band; mounted in 18k bi-colored gold; size 5 1/2

**\$3,500 - 5,500**



52

#### PROPERTY OF A LADY

##### 52 A PAIR OF 18K GOLD, CULTURED PEARL, DIAMOND AND GEM-SET EAR PENDANTS

Each designed as a cultured pearl tassel pendant suspended from a gold and round brilliant-cut diamond top, decorated with bezel-set cabochon rubies, emeralds and sapphires; mounted in 18k gold; length 2 5/8 in.

**\$1,500 - 2,000**



53

54

55

#### PROPERTY OF A LADY

**53  
AN 18K GOLD AND DIAMOND BANGLE**  
Designed as a hinged bangle, pavé-set with diamonds; *estimated diamond weight 12.89 carats; 2 1/2 in. diameter*

**\$10,000 - 15,000**

#### PROPERTY OF A MIDWEST COLLECTOR

**54  
AN EMERALD BEAD, DIAMOND AND 18K GOLD NECKLACE**  
Composed of forty-two graduated fluted emerald beads, measuring approximately from 12.11 x 11.41mm to 21.58 x 16.98mm, with round brilliant-cut diamond rondelles, to two larger round brilliant-cut diamond and gold scrolled spacers; *estimated diamond weight 16.50 carats; length 34.0 in. (one small diamond deficient)*

**\$12,000 - 18,000**

**55  
A TRIO OF 18K GOLD, DIAMOND AND GEM-SET BEE BROOCHES**  
Each invisibly-set with either a ruby, sapphire or yellow sapphire body, with corresponding eyes, to the brilliant-cut diamond head and wings, with gold legs; *mounted in 18k gold; length 1 in. each*

**\$5,000 - 8,000**



56

56

**A PAIR OF PERIDOT AND RUBY EARRINGS, DE GRISOGONO**

Each designed as series of variously-cut peridots, each in a round brilliant-cut ruby frame; signed de Grisogono; mounted in 18k white gold

**\$3,000 - 5,000**



57

57

**A DIAMOND BAND**

The wide band, set with alternating tapered bands of pavé-set colorless and yellow diamonds; estimated weight of the colorless and yellow diamonds 3.06 and 2.83 carats, respectively, mounted in 18k white and yellow gold; size 6 1/2

**\$5,000 - 8,000**

Yellow diamonds not tested for origin of color



58

**PROPERTY OF AN OREGON LADY**

58 Y

**AN 18K GOLD AND DIAMOND 'OYSTER PERPETUAL DATEJUST' WRISTWATCH, ROLEX**

With automatic movement, the mother-of-pearl dial with golden Roman numerals and window for date to the gold bezel decorated with round brilliant-cut diamonds to the integrated bracelet and deployant buckle; dial signed Rolex, with Swiss assay mark; 6 in.

**\$8,000 - 12,000**



59

59 Y

**A PAIR OF GEM-SET AND DIAMOND EARRINGS, BULGARI**

Each designed as a mother-of-pearl and round brilliant-cut diamond swirl decorated with round brilliant-cut blue, yellow, green, orange and purple sapphires; signed Bulgari, no. 7753; mounted in 18k gold; width 1 1/4 in.

**\$10,000 - 15,000**





60

#### PROPERTY OF A LADY

60<sup>Y</sup>

##### **A SET OF MOTHER-OF-PEARL, ONYX, DIAMOND AND 18K GOLD JEWELRY, ALBERT LIPTON**

Comprising a necklace, designed as a series of fifteen plaques, each set with a chevron motif of mother-of-pearl, round brilliant-cut diamonds and onyx, each divided by a double gold bar spacer; and a pair of ear clips en suite; *with jeweler's mark for Albert Lipton; estimated total diamond weight 5.53 carats; necklace 13 1/2 in.*

**\$10,000 - 15,000**



61

61<sup>Y</sup>

##### **AN 18K GOLD AND MOTHER-OF-PEARL 'NERVAL' RING, VAN CLEEF & ARPELS**

Designed as a mother-of-pearl flower with round brilliant-cut diamond and gold pistils, each petal within a gold border; *signed Van Cleef & Arpels, number indistinct; with French assay marks; size 5 1/2*

**\$8,000 - 12,000**



62

62

#### A DIAMOND RING

Set with a round brilliant-cut diamond, weighing approximately 5.82 carats, to the round brilliant-cut diamond surround, gallery and bifurcated shoulders; *mounted in platinum; size 7*

**\$25,000 - 35,000**

Accompanied by GIA report #6207844340, dated 17 January 2020, stating the diamond is U to V color range, VS1 clarity.



63

63

#### A DIAMOND AND 18K GOLD 'TANK AMERICAINE' WATCH, CARTIER

With automatic movement, the cream guilloché rectangular dial with Roman numerals, window for date, secret signature at seven and blue steeled hands, to the circular-cut diamond bezel and lugs extending an integrated round brilliant-cut diamond link bracelet and deployant buckle; *signed Carter, nos. 1725, CC826093; with French maker's mark and Swiss assay mark; length 7 1/4 in.*

**\$10,000 - 15,000**



64

#### PROPERTY FROM THE ESTATE OF YVONNE WEAVER

64

#### A DIAMOND RING

Set with a round brilliant-cut diamond, weighing approximately 7.10 carats; *mounted in 14k gold; size 6 3/4*

**\$20,000 - 30,000**

Accompanied by a copy of GIA report #2193504640, dated 12 July 2018, stating the diamond is Q to R range, VVS1 clarity.



65

#### PROPERTY FROM AN OREGON LADY

65

#### A DIAMOND RING

Set with a round brilliant-cut diamond, weighing approximately 8.47 carats, to the free-form gold surround; *mounted in 14k bi-color gold; size 7*

**\$30,000 - 50,000**

Accompanied by GIA report #1206929520, dated 19 February 2020, stating the diamond is Q to R color range, VS1 clarity.







66

**A PAIR OF CARNELIAN AND CULTURED PEARL NECKLACES**

Each composed of seventeen and nineteen carnelian beads, measuring approximately 20.08mm, three beads bezel-set with half-pearls, all spaced by cultured pearls, measuring approximately from 7.23 to 7.38 mm, to the 18k gold ball clasps; *longer necklace signed Verdura; lengths 21 and 24 mm respectively*

**\$6,000 - 8,000**

67

**A TRIO OF 18K GOLD BANDS, BULGARI**

Each designed as a twisted band of pink, white and yellow gold; *each signed Bulgari; gross weight approximately 20.3 grams; each size 6 1/2*

**\$2,500 - 3,500**

68

**A 14K GOLD AND YELLOW SAPPHIRE RING, JE CALDWELL & CO.**

Gypsy-set with a cushion-shaped yellow sapphire, weighing approximately 9.19 carats, to the gold tapered mount; *signed JEC & Co., no. E281; size 8 1/4*

**\$6,000 - 9,000**

Accompanied by AGL report CS6870, dated 06 July 2015, stating that the yellow sapphire is of Ceylon (Sri Lanka) origin, with no heat enhancement.



69



70



71



72

69

#### **AN EMERALD AND DIAMOND RING, BULGARI**

Set with a round brilliant-cut emerald, weighing approximately 1.50 carats, with tapered baguette-cut diamond shoulders; mounted in 18k gold; size 4

**\$18,000 - 25,000**

Accompanied by AGL report #CS69889-D, dated 25 August 2015, stating that the emerald is of Colombian origin, with no clarity enhancement

#### **PROPERTY OF A GENTLEMAN**

70

#### **A COLORED DIAMOND AND DIAMOND RING**

Set with a cut-cornered rectangular modified brilliant-cut fancy intense yellow diamond, weighing approximately 2.54 carats, flanked by two triangular-cut diamonds; mounted in 18k gold; size 7 1/2

**\$12,000 - 15,000**

Accompanied by GIA report #2201834241, dated 22 January 2020, stating the diamond is fancy intense yellow color, natural color, VS2 clarity.

#### **PROPERTY FROM THE LATHROP ESTATE**

71

#### **A 14K GOLD AND RUBY BRACELET, CARTIER, CIRCA 1940**

Of lattice-work design, the flexible links accented with circular-cut rubies; signed Cartier, no. 15357; accompanied by signed fitted box; length 7 1/2 in.

**\$6,000 - 10,000**

72

#### **A DIAMOND PENDANT BROOCH, BULGARI**

The modified shield-shaped plaque set with round brilliant-cut diamonds; signed Bulgari, with maker's mark and French assay marks; estimated total diamond weight 4.50 carats; mounted in 18k gold; length 1 3/8 in.

**\$5,000 - 8,000**





73



75



74

**PROPERTY FROM THE LATHROP ESTATE**

73

**AN 18K GOLD NECKLACE, BUCCELLATI**

Composed of a series of alternating etched yellow and white gold beads; *signed Buccellati; length 16 ins.*

**\$3,000 - 5,000**

74

**A PAIR OF GOLD AND DIAMOND EARRINGS, CIRCA 1960**

Each sputnik design set with a cluster of pavé-set old European-cut diamonds, with radiating gold batons, terminating with three-stone diamond detail; *one diamond deficient; screw-back fittings; estimated total diamond weight 3.60 carats; mounted in 14k bi-colored gold; length 1 1/2 in.*

**\$2,500 - 3,500**

75

**A PEARL JABOT PIN**

Designed as a pearl arrow, set with a larger central button-shaped pearl, measuring approximately 10.88 mm; *measures 3 1/4 x 2 1/4 in.*

**\$18,000 - 28,000**

With GIA report #6183713864, dated 19 September 2017, stating that the central pearl is natural, saltwater, no indication of treatment.

Please note the remaining pearls have not been tested for natural origin.





77



79



76



78

76  
**A PAIR OF 14K GOLD AND DIAMOND CLIP BROOCHES, CARTIER, CIRCA 1970**  
Each designed as a gold leaf with diamond detail; *signed Cartier*; accompanied by a double clip attachment

**\$2,000 - 3,000**

77  
**A DIAMOND RING**  
Set with an old-mine cut diamond, weighing approximately 15.52 carats, set off-center; *mounted in platinum*; size 5 3/4

**\$125,000 - 175,000**

Accompanied by GIA report #1327483477, dated 26 July 2019, stating the diamond is N color, SI1 clarity.

78  
**A PAIR OF 18K GOLD AND ENAMEL EAR HOOPS, BULGARI**  
Each designed as a dark red guilloché enamel ear hoop; *signed Bulgari*; accompanied by a signed box

**\$4,500 - 6,500**

**PROPERTY FROM THE ESTATE OF MRS. ANTOINETTE QUILLERET**

79  
**A DIAMOND BROOCH, DAVID WEBB**  
Designed as a cluster of leaves, pavé-set with round brilliant-cut diamonds to a coiled gold frame; *signed David Webb, no. KA19*; estimated total diamond weight 5.80 carats; *mounted in 18k gold and platinum*; length 2 in.

**\$4,000 - 6,000**

With certificate of authenticity from David Webb dated 12 June 2020.



80  
**A PAIR OF DIAMOND EARRINGS,  
 VAN CLEEF & ARPELS, FRANCE**  
 Of tiered kite design with articulated drops,  
 set with round brilliant-cut diamonds; *signed*  
*VCA, no. 32692, with maker's mark and*  
*French assay marks; estimated total diamond*  
*weight 4.30 carats; mounted in 18k gold;*  
*length 1 2/8 in.*

**\$9,000 - 12,000**

81  
**A FINE 18K GOLD, DIAMOND  
 AND SAPPHIRE BRACELET,  
 VAN CLEEF & ARPELS, CIRCA 1940**  
 The front designed as a four round brilliant-cut  
 diamond leaves with collet-set diamond buds  
 and gold stems, extending a double snake  
 chain bracelet; *signed Van Cleef & Arpels,*  
*N.Y., no. 18953; mounted in 18k gold and*  
*platinum; length 6 1/2 in.*

**\$25,000 - 35,000**

#### **PROPERTY OF A LADY**

Lots 82 - 86

82  
**A DIAMOND RING**  
 Of crossover design, set with rose-cut  
 diamonds, with diamond detail; *mounted in*  
*14k gold; size 5*

**\$3,000 - 5,000**



## Property of a Lady

Lots 82 - 86



83

### **A DIAMOND RING**

Set with a round brilliant-cut diamond, weighing approximately 4.90 carats, with baguette-cut diamond shoulders; *mounted in platinum; size 5 1/2*

**\$12,000 - 15,000**

Accompanied by GIA report #1206863328, dated 22 January 2020, stating the diamond is U to V color range, SI2 clarity.

84

### **A DIAMOND BAR PIN**

Centrally set with two round brilliant-cut diamonds; *estimated total diamond weight 2.00 carats; mounted in 14k white gold; length 2 5/8 in.*

**\$3,000 - 5,000**

85

### **AN EMERALD AND DIAMOND RING**

Set with a round emerald cabochon, weighing approximately 5.25 carats, with single and round brilliant-cut diamond detail; *mounted in platinum; size 5*

**\$7,000 - 10,000**

Accompanied by AGL report #1105628, dated 16 December 2019, stating that the emerald is of Colombian origin, with minor indications of traditional clarity enhancement.

86

### **A DIAMOND RING**

Set with a rose-cut diamond, measuring approximately 12.18 by 12.30 mm; *closed mounting; mounted in 18k white gold; size 5*

**\$3,000 - 5,000**





87

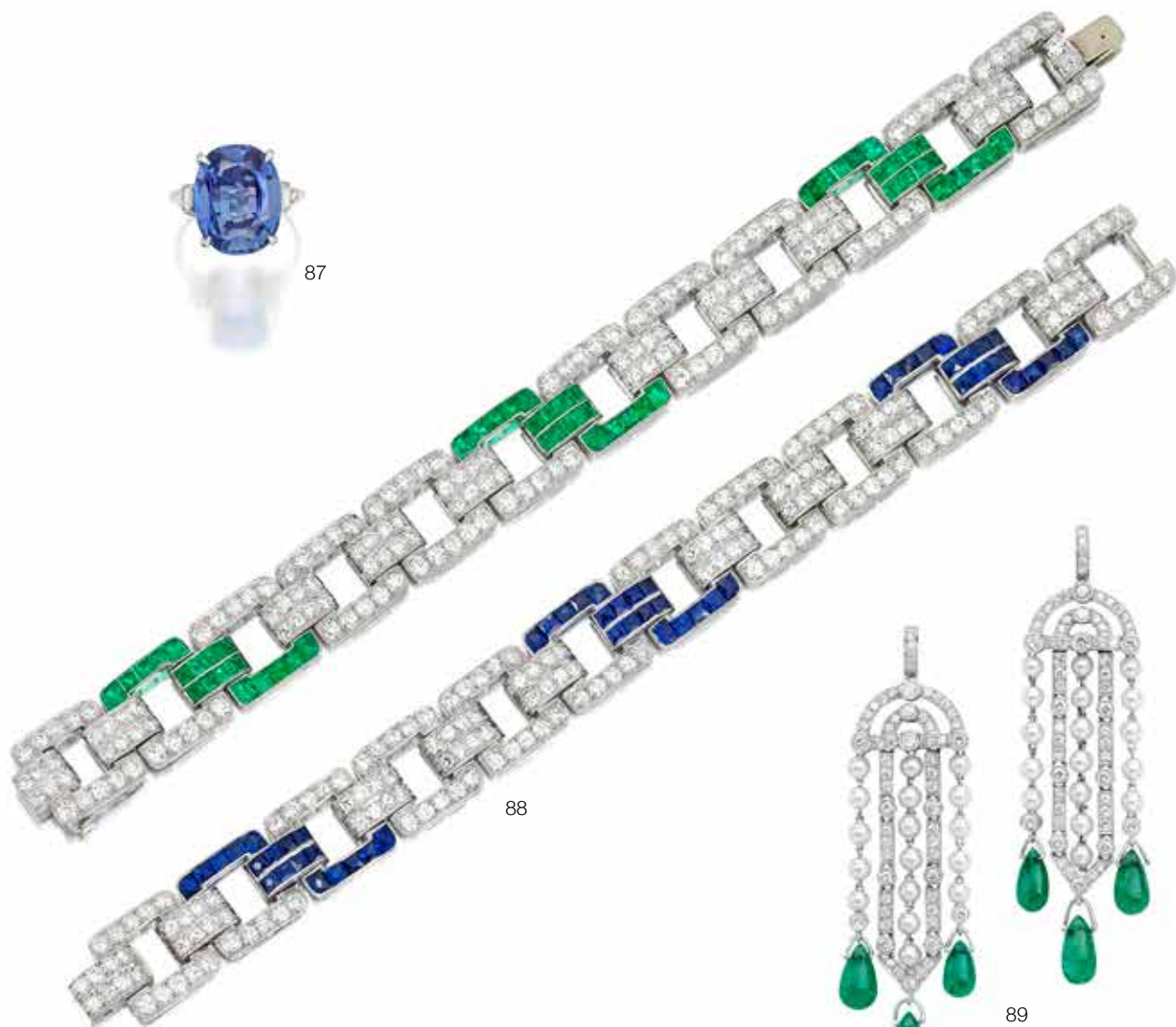
87

**A SAPPHIRE AND DIAMOND RING**

Set with an oval-shaped sapphire, weighing approximately, 8.49 carats, to the baguette and single-cut diamond scrolled shoulders; size 4 1/2

**\$12,000 - 18,000**

Accompanied by AGL report #CS1078089 dated, 07 September 2016, stating that the sapphire is of Ceylon (Sri Lanka) origin, with no gemological evidence of heat.



88

88

**A PAIR OF SAPPHIRE, EMERALD AND DIAMOND BRACELETS, OSCAR HEYMAN & BROTHERS, CIRCA 1950**

Each designed as a series round brilliant-cut diamond buckle links, one with square-cut emeralds and the other with French-cut sapphire detail; with maker's mark for Oscar Heyman & Brothers; emerald bracelet no. 15263; estimated total diamond weight 22.68 carats; mounted in platinum; length 7 in. each

**\$37,000 - 47,000**



89

89

**A PAIR OF DIAMOND, EMERALD AND PEARL EAR PENDANTS**

Each designed as a tassel composed of pearls and round brilliant-cut diamonds with drop-shaped emerald terminals to the diamond set arched top; mounted in 18k white gold; length 2 1/2 in.

**\$4,000 - 7,000**

Pearls not tested for origin.

## Property from the Estate of Monique Van Vooren

Lots 90 - 103



Monique Van Vooren lived a life that can only be dreamed. A Hollywood actress, singer, author and songwriter, she made her movie debut in *Tomorrow Is Too Late*, a 1950 Italian drama with Vittorio De Sica. Her highly eclectic resume included roles in the 1953 classic *Tarzan and the She-Devil*, *Ten Thousand Bedrooms* (1957), Oliver Stone's *Wall Street* (1987) and *Flesh for Frankenstein* (1974), a 3D film produced by Andy Warhol.

Van Vooren found fans in many places. She was a panellist on numerous game shows, starred in the Broadway musical *John Murray Anderson's Almanac*, and also had a career as a singer. Later, she was known for her cabaret performances, and in 1981 she published her first and only novel, *Night Sanctuary*. Her personal collection of photographs include shots of herself with Rudolf Nureyev, Andy Warhol, Elvis Presley and David Bowie.

Known for her wit, charm and great beauty, Ms. Van Vooren's personal collection of jewelry - including timeless pieces by Tiffany & Co., Chanel, David Webb, and Bulgari - reflect her inimitable style and glamour. The following lots offer a rare window into the personal life of an ardent New Yorker and fashionable entertainer adored by audiences across the world.





90

90

**AN 18K YELLOW GOLD TUBOGAS WATCH, BULGARI**

With quartz movement, the black circular dial with baton chapters and Arabic numerals at 12 and 6, with an engraved gold bezel, extending a triple row tubogas bracelet; *signed Bulgari, caseback nos. BB 19 IT, P.93407*

**\$4,000 - 6,000**



91

91

**AN 18K GOLD AND DIAMOND NECKLACE, TIFFANY & CO., 1989**

Designed as a gold lattice, the front set with round brilliant-cut diamonds with baguette-cut diamond detail; *signed Tiffany & Co., 1989; estimated total diamond weight 7.70 carats; length 14 1/2 in.*

**\$7,000 - 12,000**



## Property from the Estate of Monique Van Vooren

Lots 90 - 103



92

92

### AN 18K GOLD, RUBY, SAPPHIRE AND DIAMOND CUFF

The expandable cuff designed as a series of gold hourglass links, the front spaced with alternating bezel-set cabochon rubies and sapphires, to the round brilliant-cut diamond detail

**\$3,000 - 5,000**



94

94

### A PAIR OF DIAMOND EAR PENDANTS

Each designed as a marquis-cut diamond tassel with a channel-set baguette-cut diamond scrolled frame suspended from the baguette-cut diamond geometric motif top; *estimated total diamond weight 7.29 carats; one diamond deficient; mounted in 18k gold; length 2 1/4 in.*

**\$3,000 - 5,000**



93

93

### A PAIR OF RUBY, EMERALD, DIAMOND EAR CLIPS, DAVID WEBB

Each with a detachable drop-shaped pendant, decorated with bezel-set oval-shaped cabochon rubies to the cabochon emerald detail, suspended from a three-tiered round brilliant-cut diamond cushion-shaped top with a central bezel-set cabochon ruby; *signed Webb; mounted in 18k gold and platinum; length 2 1/4 in.*

**\$12,000 - 18,000**





95

**A SET OF 18K GOLD AND DIAMOND JEWELRY, PAOLO GUCCI**

Comprising a necklace, the front set with two base metal Roman heads in profile, with a central hexagonal blue topaz, extending a tapered gold necklace of column design, spaced by round brilliant-cut diamonds; and a hinged bangle en suite, *signed Paolo, designed by Paolo Gucci; necklace length 16 in.; bangle inner circumference 6 1/2 in.*

**\$3,500 - 5,000**

## Property from the Estate of Monique Van Vooren

Lots 90 - 103



96

### **AN 18K GOLD AND MULTI-GEM NECKLACE AND A PAIR OF EAR PENDANTS**

The necklace, designed as a series of 18k gold geometric-links, the front with an inner band of alternating cabochon emeralds, rubies and sapphires spaced by four-stone round brilliant-cut diamond plaques to the cultured pearl outer trim; and a pair of ear pendants, the pavé-set diamond tops bezel-set with a cabochon ruby, suspending alternating bezel-set cabochon emeralds, rubies and sapphires, each within a round brilliant-cut diamond surround, *estimated total diamond weight 2.56 carats; necklace length 14 1/2 ins.*

**\$3,000 - 5,000**



97

98

97

#### **A GOLD PENDANT NECKLACE**

The detachable textured and polished 18k gold owl head pendant with single-cut diamond detail and cabochon emerald eyes, suspended from a 14k gold oval and scroll link longchain; gross weight approximately of the 18k owl 67.7 gram and of the 14k gold chain 113.3g; necklace length 27 in. and pendant 2 1/4 x 2 3/8 in.

**\$3,000 - 5,000**

98

#### **AN 18K GOLD AND EMERALD RAM'S HEAD BROOCH**

In the form of a ram's head with round brilliant-cut diamond detail and round-cut three-stone emerald eyes; gross weight approximately 91.0 grams; measures 3 x 2 in.

**\$2,000 - 4,000**





99



100

Property from the Estate of Monique Van Vooren

Lots 90 - 103

99

#### A DIAMOND NECKLACE

Designed as round brilliant and baguette-cut diamond overlapping scrolls to the round brilliant and baguette-cut diamond front chain extending a twin row of round brilliant-cut diamonds; *estimated total diamond weight 33.55 carats; mounted in platinum, length 15 1/4 in.*

**\$20,000 - 30,000**

100

#### A DIAMOND BRACELET, CIRCA 1930

Designed as three openwork panels set with old European and baguette-cut diamonds, each with a central marquise-cut diamond and three-stone foliate detail and buckle spacers; *numbered 3253; estimated total diamond weight 16.00 carats; mounted in platinum; length 8 in. (one diamond deficient)*

**\$12,000 - 18,000**





## Property from the Estate of Monique Van Vooren

Lots 90 - 103



101

### **A SET OF 18K GOLD COLORLESS AND COLORED DIAMOND JEWELRY**

Comprising a bracelet, designed as a central double row of round brilliant-cut colorless diamond leaves, each with a three-stone round brilliant-cut yellowish-brown diamond center, to the yellowish-brown diamond trim; and a pair of ear pendants en suite; *several diamonds deficient; bracelet length 7 1/4 in.; ear pendants length 3 in.*

**\$3,000 - 5,000**

Colored diamonds not tested for origin of color.



102

**A SET OF 18K WHITE GOLD, COLORLESS  
AND COLORED DIAMOND JEWELRY**

Comprising a pendant necklace, the detachable pendant designed as a series of concentric circles, alternating with round brilliant-cut colorless and colored diamonds, with a central oval-cut diamond, suspended from a chain composed of alternating round brilliant-cut colorless diamonds and colored diamonds, each flanked by a smaller diamond to the polished white gold navette and circular link backchain; a pair of ear pendants and a flame ring en suite; *mounted in 18k gold; necklace length 23 in.; may be shortened to wear 6 1/2 in. bracelet; pendant 2 5/8 in.*

**\$6,000 - 10,000**

Colored diamonds not tested for origin of color.





103



105



104

Property from the Estate  
of Monique Van Vooren

Lots 90 - 103

103

**A BLACK CERAMIC 'J12' WATCH,  
CHANEL**

With quartz movement, the circular dial with a central black panel within a baguette-cut diamond surround and outer border with diamonds and synthetic sapphire chapters, to the synthetic sapphire bezel and winding stem, extending a black ceramic bracelet and deployant buckle; *dial signed Chanel J12, no. DN23755; mounted in black ceramic and steel; 6 1/4 in.*

**\$2,800 - 4,800**

104

**A PAIR OF DIAMOND STUDS**

Each designed as a flower with pear-shaped diamond petals with a center round brilliant-cut diamond; *estimated total diamond weight 4.54 carats; mounted in platinum*

**\$6,000 - 10,000**

105

**A SUPERB DIAMOND RING**

Centering a marquise-cut diamond, weighing approximately 5.01 carats, the shoulders accented with millegrain-set round brilliant-cut colored diamonds, with diamond detail to the gallery; *mounted in platinum; size 6 1/2*

**\$130,000 - 190,000**

Accompanied by GIA report #5192161268, dated May 18, 2018, stating that the diamond is D color, VVS1 clarity

Together with a Type IIa classification letter stating that these diamonds are the most chemically pure and often have exceptional optical transparency.

Colored diamonds have not been tested for natural color origin.







106



107



108



109

#### PROPERTY FROM THE ESTATE OF DIAHANN CARROLL

106

##### **A DIAMOND AND CULTURED PEARL 'TOI ET MOI' RING**

Of crossover design, set with cut-cornered square modified brilliant, weighing approximately 6.03 carats, and a cultured pearl measuring approximately 13.43mm; *mounted in platinum and 18k gold; size 7*

**\$38,000 - 55,000**

Accompanied by GIA report #2203876305, dated 29 January 2020, stating the diamond is I color, VS2 clarity.

107

##### **A FINE SPINEL AND DIAMOND RING**

Set with a cut-cornered rectangular-cut orange-red spinel, weighing approximately 10.83 carats, flanked by a graduated row of baguette-cut diamonds; *mounted in 18k white gold; size 7*

**\$16,000 - 20,000**

Accompanied by GRS report GRS2014-080147, dated 5 August 2014, stating that the orange-red spinel is of Burma (Myanmar) origin, with no indication of thermal treatment.

108

##### **A BLACK LACQUER CUFF**

Designed as a black lacquer cuff decorated with pearls, each within a gold frame to the gold border; *with French assay marks; mounted in 18k white gold and silver; inner diameter 5 1/4 in.*

**\$5,000 - 8,000**

Please note that the pearls have not been tested for natural origin.

109

##### **A PAIR OF DIAMOND AND CULTURED PEARL EAR CLIPS, HARRY WINSTON**

Of floral design, set with round brilliant-cut diamonds, centering two baroque cultured pearls measuring approximately 20.46 x 14.31 x 13.55 mm and 21.34 x 14.51 x 12.73 mm; *with maker's mark; estimated total diamond weight 2.30 carats; mounted in platinum; length 1 in.*

**\$8,000 - 12,000**



110



111



112

110

#### **A FRENCH-CUT DIAMOND BAND**

The top channel-set with seven French-cut diamonds; *estimated total diamond weight 1.70 carats, mounted in 18k white gold; size 7 1/4*

**\$3,000 - 5,000**

111

#### **A PAIR OF PINK SAPPHIRE AND DIAMOND EAR PENDANTS**

Each set with a round brilliant-cut pink sapphire, within a round brilliant-cut diamond surround suspended from micro-pavé diamond half-hoop; *estimated total weight of the pink sapphires 4.05 carats; mounted in platinum*

**\$5,000 - 8,000**

112

#### **A DIAMOND NECKLACE**

Designed as a tapered series of round brilliant-cut diamond smaller and larger interlocking oval links; *estimated total diamond weight approximately 14.22 carats; mounted in 18k gold; length 15 ins.*

**\$15,000 - 20,000**



115



116



114



113

#### PROPERTY FROM THE ESTATE OF LEE MEYER

113

##### **AN EMERALD, DIAMOND AND RUBY BROOCH, CARTIER**

Designed as a parrot, set with round brilliant, single and baguette-cut diamonds, its chest set with an oval emerald cabochon measuring approximately 11.70 x 14.55 x 7.15 mm, with a ruby cabochon eye; *signed Cartier; estimated total diamond weight: 3.90 carats; mounted in platinum and 14k gold; length 2 1/4 in.*

**\$8,000 - 10,000**

#### PROPERTY FROM A NEW MEXICO ESTATE

114

##### **A DIAMOND BRACELET**

Designed as a twin row of alternating round brilliant and baguette-cut diamonds; *estimated total diamond weight 12.18 carats; mounted in platinum; length 6 5/8 in.*

**\$12,000 - 18,000**

115

##### **A PAIR OF DIAMOND STUDS**

Set with two round brilliant-cut diamonds, weighing approximately 3.01 and 3.06 carats; *mounted in 14k white gold*

**\$18,000 - 25,000**

116

##### **A DIAMOND RING, CARTIER LONDON, CIRCA 1955**

Designed as an abstract fan, set with round brilliant, old European and baguette-cut diamonds; *signed Cartier London; estimated total diamond weight 3.90 carats; mounted in platinum; size 5 3/4*

**\$7,000 - 10,000**







117



118



119



120

117

#### A DIAMOND RING

Set with an old mine-cut diamond, weighing approximately 3.02 carats, to the pierced gallery decorated with single-cut diamonds and the shoulders with floral detail; *mounted in platinum; size 3 1/4*

**\$5,000 - 7,000**

118

#### A GOLD AND RUBY BANGLE

The hinged bangle set to one side with a graduated row of calibr  -cut rubies, the other side set with square-shaped and rectangular-cut rubies alternating with openwork gold foliate detail; *mounted in 18k gold; inner circumference 6 1/2 in.*

**\$6,000 - 9,000**

119

#### A PAIR OF DIAMOND AND EMERALD EAR PENDANTS, MARCHAK, PARIS, CIRCA 1965

Each set with an pear-shaped emerald, with marquise and round brilliant-cut diamond flowers and gold wire-work detail; *signed Marchak, Paris; with French assay marks; estimated total diamond weight 5.54 carats; mounted in platinum; length 2 3/8 in.*

**\$20,000 - 30,000**

120

#### TWO 18K GOLD, DIAMOND AND RUBY BROOCHES, CARTIER, CIRCA 1965

Each designed as a bird with a ruby eye and round brilliant-cut diamond head feathers, each perched on a branch; one with diamond-set wings; *signed Cartier, accompanied by a Cartier red leather box, one with English hallmarks dating to 1963 and with maker's mark JC*

**\$15,000 - 20,000**



122



121



123

121

**A PAIR OF RUBY AND DIAMOND  
EAR PENDANTS**

Each bezel-set with an oval-cut ruby, framed and suspended by round brilliant-cut diamonds; *estimated total diamond weight 3.35 carats; estimated total ruby weight 2.33 carats; mounted in platinum; length 1 3/8 in.*

**\$8,000 - 12,000**

Accompanied by AGL report #1084643 A and B, dated 8 June 2017, stating that the rubies are of Burma (Myanmar) origin, with no indications of heat or clarity enhancements.

122

**A DIAMOND AND RUBY BROOCH**

Designed as a flower head, the petals encrusted throughout with invisibly-set rubies, the pistils set with round brilliant-cut diamonds; *estimated total diamond weight 1.84 carats; mounted in 18k white gold; length 1 7/8 in.*

**\$12,000 - 18,000**

123

**A PINK SAPPHIRE AND DIAMOND RING**

Bezel-set with an oval-cut pink sapphire, framed by a cluster of old European-cut diamonds; *estimated calculated ruby weight 1.72 carats; estimated total diamond weight 1.40 carats; mounted in 14k bi-colored gold; size 7 1/4*

**\$5,000 - 7,000**

Accompanied by AGL report #1107640 dated, 17 March 2020, stating that the pink sapphire is of Burma (Myanmar) origin, with no heat enhancement.

**PROPERTY FROM THE LATHROP ESTATE**



124 Y

**AN 18K GOLD, CORAL AND DIAMOND SAUTOIR**

Composed of an alternating series of eight-row gold ball chains and carved coral rondelles, suspending a detachable pendant, with round brilliant-cut diamond detail to the carved coral top and gold bead tassel; *gross weight approximately 215.7 grams; necklace length 33in. and pendant length 3 7/8in.*

**\$12,000 - 18,000**

125

**A SPINEL AND DIAMOND RING**

Set with a cushion-shaped red spinel, weighing approximately 3.32 carats, flanked to each side by a round brilliant-cut diamond; *mounted in 14k gold; size 7 1/4*

**\$8,000 - 12,000**

Accompanied by AGL report #1106798 dated 20 February 2020 stating the red spinel is Burma (Myanmar) origin, with no gemological evidence of enhancements/treatments present.





126

126

**A PAIR OF 18K GOLD EARCLIPS,  
DAVID WEBB**

Each designed as a hammered gold tapered hoop to the crescent top; *gross weight approximately 46.7 grams; length 1 1/2 ins.*

**\$2,500 - 4,500**

127

**A DIAMOND AND 18K GOLD BRACELET**

Designed as a three-row series of twisted gold scrolls, each set with round brilliant-cut diamonds; *signed Webb; estimated diamond weight 7.20 carats; length 6 3/4 in.*

**\$6,000 - 9,000**

127

128

**AN 18K GOLD, CHRYSOPRASE  
AND ONYX PENDANT BROOCH,  
VAN CLEEF & ARPELS**

Designed as a lion's head, with chrysoprase eyes and an onyx nose; *signed VCA, no. B1063, with French maker's mark and assay marks; gross weight approximately 51.17 grams; length 3 in.*

**\$6,000 - 8,000**

128

## Property from the Collection of Edward and Mildred Lewis, Los Angeles, CA

Lots 129 - 131



### Bonhams is honored to offer property from the collection of Hollywood legends Edward and Mildred Lewis.

A producer, writer and screenwriter, Edward Lewis is perhaps best known as producer of the blockbuster Universal Pictures production *Spartacus*, which was nominated for six Academy Awards, six Golden Globe Awards and a BAFTA Award. Directed by Stanley Kubrick, the film's all-star cast included Kirk Douglas, Laurence Olivier, Jean Simmons and Charles Laughton. To write the screenplay, Lewis secretly enlisted Dalton Trumbo, one of the Hollywood Ten who had been blacklisted as part of Senator Joseph McCarthy's House Un-American Activities Committee investigations into communism among members of the entertainment industry. Although Trumbo had written other screenplays under pseudonyms while blacklisted, *Spartacus* was among the first to break the stigma of the Hollywood Ten, as Lewis insisted on including Trumbo in the film credits.

Edward Lewis had produced *Spartacus* at the suggestion of his wife, Mildred, who was a producer and writer in her own right. Mildred Lewis was largely responsible for bringing a film to life that captured the zeitgeist of 1970s experimentation and defined both the "dark comedy" and the "sleeper". That film was *Harold and Maude*, written by Colin Higgins, who at the time was the Lewis' pool boy. Higgins introduced the script to Mildred Lewis, who ultimately served as the film's executive producer.

Edward and Mildred were partners in both work and life. During their 73 year marriage, they collaborated on numerous film, theater and literary projects. Together, the couple produced the 1982 film *Missing*, which received four Academy Award nominations, five Golden Globe nominations and seven BAFTA nominations, and shared the Palme d'Or at the Cannes Film Festival. They also co-wrote the groundbreaking 1977 film *Brothers*.

In addition to their work in entertainment, Edward and Mildred were active in civil rights causes and were passionate art collectors.

Bonhams is delighted to offer a selection of pieces from the Lewis' collection throughout the coming months.



129



130



131

129

#### **A COLORED DIAMOND AND DIAMOND PENDANT**

The foliate design top supporting articulated pendant drops accented by numerous variously-cut diamonds in colorless to yellow hues, anchored by a fancy pink-brown marquise-cut diamond, weighing approximately 0.95 carats, and a fancy brown-orange pear-shaped diamond, weighing approximately 1.25 carats; *estimated remaining diamond weight: 3.44 carats; mounted in platinum and 18k gold; length 1 5/8 in.*

**\$9,000 - 12,000**

Accompanied by GIA report #6204845048, dated 24 January 2020, stating the 0.95 carat diamond is fancy pink-brown, natural color, I2 clarity.

Accompanied by GIA report #2205845047, dated 24 January 2020, stating the 1.25 carat diamond is fancy brown-orange, natural color, I1 clarity.

Please note that the diamonds of yellow hue have not been tested for natural origin of color.

130

#### **A PLATINUM AND DIAMOND BRACELET, RAYMOND YARD, CIRCA 1925**

Designed as four articulated openwork panels set with old European, marquise and baguette-cut and half moon-shaped diamonds; *signed Yard Inc; estimated total diamond weight 18.00 carats; mounted in platinum; length 7 1/8 in.*

**\$18,000 - 28,000**

131

#### **A COLORED DIAMOND AND DIAMOND RING**

Set with a round brilliant-cut fancy yellow diamond, weighing approximately 4.03 carats, flanked by two pear-shaped diamonds; *fitted with sizing band; estimated remaining diamond weight 1.30 carats; mounted in platinum and 18k gold; size 5 3/4*

**\$40,000 - 60,000**

Accompanied by GIA report #6204833761, dated 13 January 2020, stating the diamond is fancy yellow, natural color, VVS2 clarity.





132  
**AN 18K GOLD AND DIAMOND  
 'DRAPÉRIE' NECKLACE, CARTIER, 1999**  
 Designed as ten rows of bead chain,  
 accented throughout with brilliant-cut  
 diamond pendants set at intervals; *signed*  
*Cartier, no. 835616; estimated total diamond*  
*weight 1.80 carats; mounted in 18k bi-colored*  
*gold; length 14 1/4 in.*  
**\$10,000 - 15,000**



134  
**A TWIN STONE DIAMOND  
 AND EMERALD RING**  
 Of crossover design, set with two round  
 brilliant-cut diamonds, weighing 1.14 and 1.22  
 carats, to the scrolled baguette-cut emerald  
 detail; *mounted in 18k gold; size 5 1/4*  
**\$6,500 - 9,500**  
 Accompanied by GIA report #2205761258,  
 dated 03 December 2019, stating that the  
 1.14 carat diamond is K color, VS1 clarity  
 Accompanied by GIA report #2205761389,  
 dated 03 December 2019, stating that the  
 1.22 carat diamond is J color, VS2 clarity.



133  
**A GOLD AND DIAMOND LIZARD  
 BROOCH, VAN CLEEF & ARPELS**  
 Designed as a textured gold lizard with  
 a round brilliant-cut diamond back and  
 cabochon emerald eyes; *signed VCA, number*  
*indistinct*  
**\$4,500 - 6,500**





135

135

**A PAIR OF TURQUOISE AND TIGER'S EYE EAR CLIPS**

Each designed as a flower, with a bezel-set circular cabochon turquoise to the tiger's eye petals with gold wire-work detail and round brilliant-cut diamonds; *mounted in 18k gold; width 2 in.*

**\$3,000 - 5,000**



136

136

**AN 18K GOLD, DIAMOND, AND TURQUOISE BRACELET**

Composed of a series of scrolled turquoise cabochon links, with three rows set with round brilliant-cut diamonds, each within a twisted gold frame; *estimated total diamond weight 1.75 carats; length 6 3/4 in.*

**\$4,000 - 7,000**



137

137

**AN 18K GOLD, TURQUOISE, AND DIAMOND RING, CARTIER, FRANCE, CIRCA 1956**

Of twisted bombé design set with turquoise cabochons and flanked by round brilliant-cut diamonds to a fluted gold band; *signed Cartier Paris, with maker's mark and French assay mark; estimated total diamond weight 2.00 carats; size 6 1/2*

**\$7,000 - 10,000**

cf. N. Coleno, *Amazing Cartier: Jewelry Design Since 1937*, (Paris: Flammarion Publishers, 2008) page 165.



138

138

**A GROUP OF GOLD AND TIGER'S EYE JEWELRY, CIRCA 1975**

Comprising a necklace, designed as a series of carved tiger's eye beads, each decorated with a textured gold cap, to the circular-link chain; and a ring, designed as a carved crossover tiger's eye to the gold scrolled bifurcated hoop; *necklace circa 1970; mounted in 18k gold; length 33 in.; ring mounted in 14k gold; size 6 1/2*

**\$4,000 - 6,000**

139

**AN 18K GOLD, SAPPHIRE, AND DIAMOND TURTLE PIN, CARTIER**

The gold turtle with a round brilliant-cut diamond shell and cabochon sapphire eyes; *signed Cartier, Paris, no. 015402, with French assay marks and maker's mark; mounted in 18k gold and platinum; measures approximately 1 1/2 x 7/8 in.*

**\$6,000 - 9,000**



139



140



141

140

**A PAIR OF TURQUOISE AND DIAMOND EAR CLIPS, BOUCHERON**

Each designed as a navette-shaped and round brilliant and single-cut diamond scroll; *signed Boucheron, Paris, no. 36249; with French assay and maker's mark; mounted in 18k gold and platinum*

**\$5,000 - 8,000**

141

**A PAIR OF 18K GOLD, DIAMOND AND CULTURED PEARL EAR PENDANTS**

Each set with a detachable drop-shaped cultured pearl with a round brilliant-cut top and bezel-set diamond spacer, suspended from a pavé and channel-set foliate top; *tops signed Cartier, no. 61275C; estimated diamond weight 5.75 carats, mounted in 18k gold; length 1 6/8 in.*

**\$5,000 - 8,000**



142



144



143

142

**AN 18K GOLD AND DIAMOND WATCH,  
PIAGET, TIFFANY & CO.**

With mechanical movement, the circular golden dial with black Roman numerals to the round brilliant-cut diamond bezel extending an integrated gold bracelet; dial signed Piaget, Tiffany & Co., caseback nos. 926 B2 and 170377, with Swiss assay mark; length 6 1/4 ins.

**\$1,000 - 1,500**

143

**AN 18K GOLD AND DIAMOND BROOCH,  
MAUBOUSSIN, CIRCA 1965**

Designed as a series of wirework scrolls with old mine and old European-cut diamond detail; signed Mauboussin, Paris, number indistinct, with French assay marks; length 2 in.

**\$2,500 - 3,500**

144

**A PAIR OF GOLD AND WOOD CUFFS,  
VAN CLEEF & ARPELS**

The wood cuffs embellished with triangular 18k gold motifs; signed VCA, nos. B2587025 and B2587027; with maker's mark and French assay marks; inner circumferences: 6 1/2 and 6 5/16 in.

**\$13,000 - 18,000**



145

145

**A DIAMOND NECKLACE,  
VAN CLEEF & ARPELS**

Composed of five floral motifs, set with round brilliant-cut diamonds; signed VCA, no. CL8877; estimated total diamond weight 2.60 carats; mounted in 18k white gold; length 16 3/8 in.

**\$7,000 - 10,000**



147



146

146

**A PAIR OF DIAMOND EARRINGS**

Each designed as a round brilliant-cut diamond loop; estimated total diamond weight 16.57 carats, mounted in 18k white gold; length 2 1/2 in.

**\$18,000 - 25,000**

147

**A TRIO OF GOLD, DIAMOND, EMERALD  
AND RUBY RINGS**

All three set with French-cut diamonds, two with emerald detail and one with ruby detail, to the single-cut diamond detail; mounted in 18k white gold; sizes 6 1/2, 7 and 7 1/4

**\$3,000 - 5,000**



## Sapphires from Kashmir

To jewelry connoisseurs the world over, the word Kashmir represents the ultimate measure of sapphire quality. Renowned for their brilliance and strong saturation of velvet blue, stones from Kashmir - the northernmost geographical region of the Indian subcontinent - were first discovered and mined in the early 1880s following a landslide in a remote valley. Hearing of these sapphires, brighter than any previously discovered, the Maharaja of Kashmir purchased the mine and work began in earnest. The mine was only active for a short period of time, operating for just five years between 1882 and 1887, when the supply of sapphires was depleted.

A new mine was later opened and periodic mining has been carried out in the intervening years but with far less success than before. This means that most Kashmir sapphires on the market today were mined in the short lifetime of the original mine.

This limited production has resulted in only a small fraction of the world's total sapphire supply originating from Kashmir, and they are therefore by far, the rarest examples available.

However, rarity is only part of the attraction of Kashmir sapphires. They also possess a unique set of characteristics that sets them apart. Their incomparable color - often compared to that of cornflowers - surpasses that of all other sapphires and retains its luster in any light, further enhancing their appeal. Kashmir sapphires also exhibit a somewhat intangible quality, an almost soft texture that is often compared to velvet.

The two Kashmir sapphires on offer in this sale exhibit these sought after characteristics and combined with a high degree of transparency, they are surely at the top of the any sapphire collector / aficionados wish list.

## Property of a Distinguished Australian Family

Lots 148 - 149



148

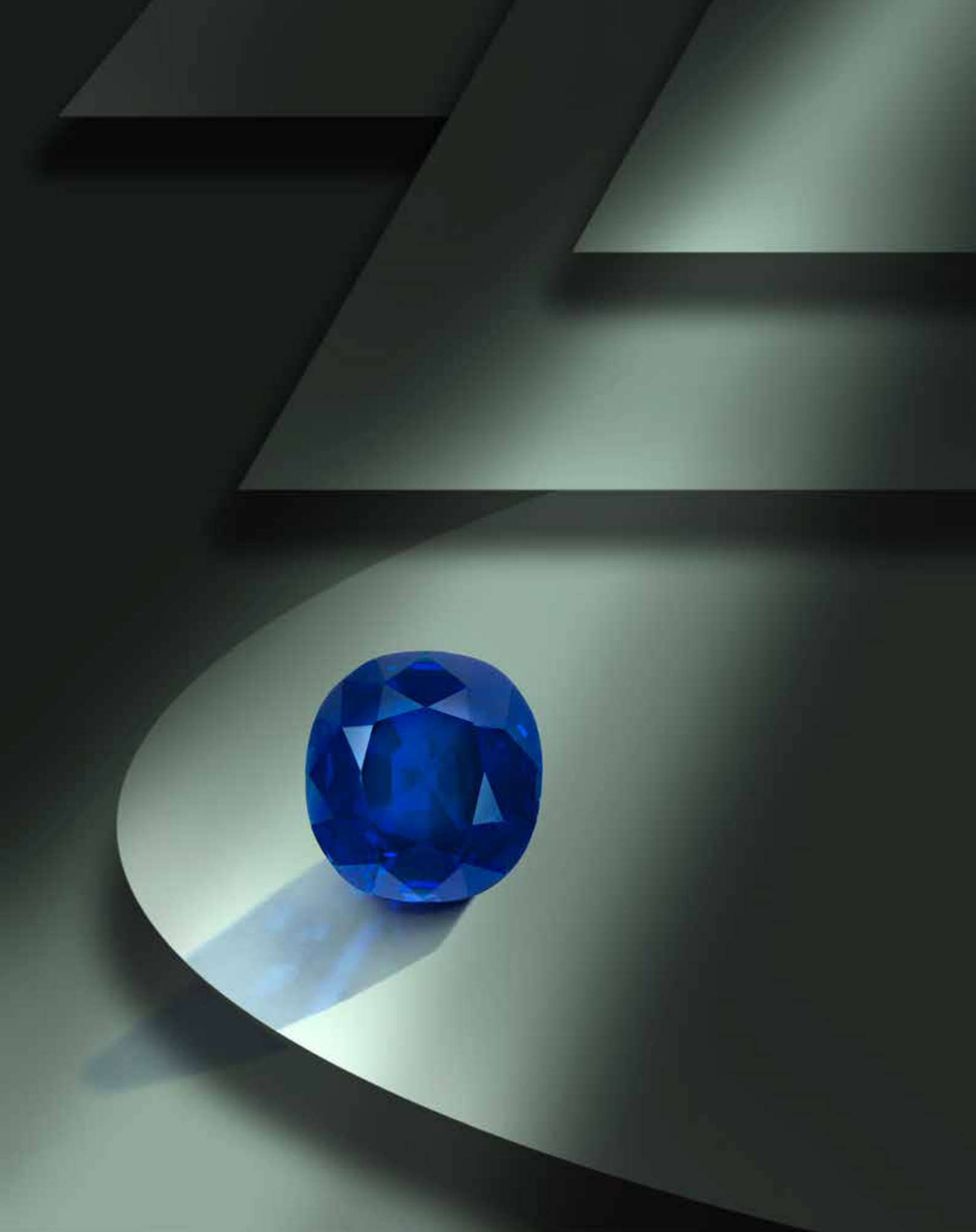
### **A FINE UNMOUNTED KASHMIR SAPPHIRE**

A cushion-shaped sapphire, weighing 6.95 carats

**\$250,000 - 450,000**

Accompanied by AGL report #1107101, dated 6 March 2020, stating that the sapphire is of Kashmir origin, with no gemological evidence of heat and no clarity enhancement.

Accompanied by Gubelin report #20062032, dated 30 June 2020, stating that the sapphire is of Kashmir origin, with no indications of heating.



## Property of a Distinguished Australian Family

Lots 148 - 149



149

### **A SUPERB UNMOUNTED KASHMIR SAPPHIRE**

A cushion-shaped sapphire, weighing 9.23 carat

**\$475,000 - 775,000**

Accompanied by AGL report #1107102, dated 6 March 2020, stating that the sapphire is of Kashmir origin, with no gemological evidence of heat and no clarity enhancement.

Accompanied by Gubelin report #20062033, dated 30 June 2020, stating that the sapphire is of Kashmir origin, with no indications of heating. With an additional comment: Unheated sapphires of this quality are rare.







150



152



151

150

**A 14K GOLD NECKLACE, TIFFANY & CO., CIRCA 1945**

Designed as a highly flexible series of stylized chevron links; *signed Tiffany & Co. gross weight approximately 67.61 gram, length 16 1/4 in.*

**\$5,000 - 8,000**

151

**A PAIR OF RUBY, SAPPHIRE, YELLOW SAPPHIRE AND DIAMOND EAR CLIPS, OSCAR HEYMAN & BROTHERS**

Each designed as a cluster of three flowers, set with oval-cut rubies, sapphires and yellow sapphires, and round brilliant-cut diamond pistils; *with maker's mark, nos. 103940 and the other with indistinct marks; mounted in 18k gold and platinum*

**\$7,000 - 10,000**

152

**A GOLD AND SAPPHIRE RING, FRANCE**

The faceted rectangular-cut sapphire, bezel-set to a wide, polished bi-colored gold mount; *stamped with French assay marks; fitted with sizing band; mounted in 18k gold; size 3 3/4*

**\$5,000 - 7,000**



153



155



154

153

**AN 18K GOLD AND DIAMOND NECKLACE, TIFFANY & CO.**

The front designed as a swag of round brilliant-cut diamond and navette-shaped gold links to the twin row gold backchain of similar design; *signed Tiffany & Co.*; accompanied by a signed box; length 14 1/2 in.

**\$15,000 - 20,000**

154

**AN 18K PINK GOLD LINK BRACELET, CIRCA 1945**

Designed as a three-row series of pink gold fish scale links, *gross approximate weight 72.51 grams; length 7 3/4 ins*

**\$3,500 - 4,500**

155

**AN 18K GOLD, OPAL, DIAMOND AND RUBY BROOCH, TIFFANY & CO., SCHLUMBERGER**

Designed as a fish, with a black opal body, round brilliant-cut diamond scales and cabochon ruby eyes; *signed Tiffany, Schlumberger*; length 3 in.

**\$12,000 - 18,000**



## Rubel Dancers

The ballerina brooches by John Rubel, both under his own name and for Van Cleef & Arpels, are one of the most iconic designs of all time. Created during the dark days of World War II in the early 1940s, these brooches were designed to bring light to the darkness with a sense of color and movement.

Born in Hungary in the late 1800s, John (Jean) and Robert Rubel were already experienced jewelers when they moved to Paris in 1915 and opened the Rubel Frères workshop at 22 rue Vivienne. Located a short walk to Place Vendôme, the brothers manufactured for a handful of French makers, but their meticulous and beautiful construction quickly made them a favorite partner for Van Cleef & Arpels. They created important pieces for the firm, including the roses bracelet in diamonds, rubies, and emeralds that was the centerpiece of VCA's display at the 1925 Paris Exposition Internationale des Arts Décoratifs et Industriels Modernes and won the Grand Prix. Rubel Frères was also responsible for several Art Deco Egyptomania pieces created for VCA in 1924, including a flexible bracelet with kneeling figures and a watch purchased by the Maharaja of Indore.

The brothers became so integral to VCA's business, that when the company opened a New York branch in 1939, the Rubels moved to New York to support the endeavor. Shortly after the move, John was in a Latin bar in Greenwich Village, when struck by a flamenco performance, he sketched a dancing brooch figure on his napkin. The next day, he showed the drawing to VCA's head designer Maurice Duvalier, who immediately accepted the design and Rubel created a few dancer brooches in the early 1940s signed by both Rubel and VCA.

In 1943 the Rubels stopped collaborating with VCA and opened their own store, John Rubel, at 777 Fifth Avenue. The same year, they also filed several patents, including five for dancer brooches. It is possible that the dancers are at the heart of the falling out between the companies, as Rubel and Duvalier each continued exploring the theme and the designs becoming one of the most important in VCA's history, with examples owned by important Americans Marjorie Merriweather Post, Jessie Woolworth Donahue, Barbara Hutton, and George Balanchine.

Rubel had success in New York and collaborated on advertisements with Revlon in the 1940s, even landing the cover of Vogue, January 15, 1945, with a suite of jewelry. The firm explored flowers and fairies, snowflakes and domed cocktail rings. They loved anything with color and movement.

This set of Rubel dancers is an unusual find, particularly in a pair. Created with the iconic rose-cut diamond faces topped by a precious headdress, the dancers extend expressive ribbon arms to hold up skirts studded with sapphires and rubies with diamond accents. The arms and stylised bodies of these dancers show evidence that Rubel was influenced by the Walt Disney movie *Fantasia*. Released in 1940, it featured a scene with dancing flowers that fascinated Rubel. The feet of the dancers appear to step delicately forward, while the heads are gently cocked to one side. Rubel made clever use of the materials available. Due to wartime restrictions, large stones and platinum were difficult to get, but the dancers made perfect use of the gold and smaller stones in a whimsical design. The overall effect is one of movement and delight.

cf. Evelyne Posseme, Van Cleef & Arpels: When Elegance Meets Art, Musée des Arts décoratifs, 2018, pp 132–3.

cf. Penny Proddow and Debra Healy, American Jewelry: Glamour and Tradition, Rizzoli, New York, 1987, pp. 146–7.

Courtesy of Sarah Davis





## Property of a Lady

Lots 156 - 166



156

### **A DIAMOND BOMBE RING**

Set with an old European-cut diamond, weighing approximately 2.34 carats, to the dome of alternating round brilliant and baguette-cut diamonds, to the diamond trim; *size 6 1/4*

**\$3,000 - 5,000**

157

### **A RUBY AND DIAMOND RING, TIFFANY & CO., SCHLUMBERGER**

Set with an oval-cut ruby, weighing approximately 3.11 carats, in a surround of round brilliant-cut diamond leaves, with gold veins; *signed Tiffany & Co., Schlumberger; accompanied by a signed box; mounted in 18k gold and platinum; size 7*

**\$8,000 - 12,000**

158

### **AN 18K GOLD AND DIAMOND WRISTWATCH, CIRCA 1945**

With a concealed watch, winding movement, the rectangular dial with Arabic numerals, to the brick-link cover to the diamond-set detail and crescent push-piece lugs to the brick-link bracelet, the reverse engraved M.B.W.; movement signed Bulova, no. 2710.01; *mounted in 18k gold and platinum; length 6 1/4 in.*

**\$6,000 - 9,000**

159

### **A PAIR OF 18K GOLD AND DIAMOND EARRINGS, TIFFANY & CO., SCHLUMBERGER**

Each designed as an oval gold pendant decorated with round brilliant-cut diamond rondelles suspended from a twin row of baguette-cut diamonds; estimated total diamond weight 3.50 carats; *signed Tiffany, Schlumberger; accompanied by a signed box; mounted in 18k gold and platinum; length 1 1/4*

**\$2,500 - 4,500**



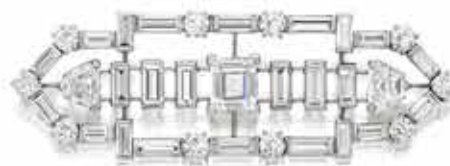
160



162



163



161

160

**A SAPPHIRE AND DIAMOND RING, TIFFANY & CO.**

Set with an oval-shaped sapphire, weighing approximately 13.14 carats, within a pear-shaped diamond surround; *signed Tiffany & Co.*; accompanied by signed box; estimated total diamond weight 3.52 carats; mounted in platinum; size 5 (with sizer)

**\$8,000 - 12,000**

162

**A RUBY AND DIAMOND RING, CARTIER**

Set with a cushion-shaped ruby, weighing approximately 8.06 carats, in a pear-shaped diamond surround to the round brilliant-cut bifurcated shoulders; *signed Cartier, no. 95024*; accompanied by a signed box; estimated total weight of the diamonds 4.96 carats; mounted in 18k gold; size 6 1/4

**\$20,000 - 30,000**

161

**A DIAMOND BROOCH**

Of geometric design, set with a central emerald-cut diamond, extending vertically-set baguette-cut diamonds to the step-cut trapezoid diamond terminals, all within an alternating round brilliant and baguette-cut diamond frame; *estimated total diamond weight 6.60 carats*; mounted in platinum; length 2 1/4 in.

**\$4,000 - 7,000**

163

**A DIAMOND RING**

Set with a rectangular-cut diamond, weighing approximately 9.03 carats, flanked to each side by twin tapered baguette-cut diamonds, to the wide gold ring; *mounted in 18k gold and platinum*; size 7 1/2

**\$50,000 - 80,000**

## Property of a Lady

Lots 156 - 166



164

**AN ATTRACTIVE PAIR OF DIAMOND BROOCHES,  
JOHN RUBEL; AND A PAIR OF EAR CLIPS, CIRCA 1950**

The brooches designed as old mine, old European and baguette-cut diamond snowflakes; and a pair of ear clips of similar design; *brooches signed John Rubel Co., ear clips unsigned; accompanied by a signed box; estimated total diamond weight 18.70 carats; mounted in platinum; brooches width 1 1/2 in.; ear clips 5/8 in.*

**\$10,000 - 15,000**





165

165

**A VERY FINE 18K GOLD AND GEM-SET BALLERINA BROOCH,  
JOHN RUBEL CO., CIRCA 1950**

The graceful ballerina wearing a round brilliant-cut sapphire, ruby and diamond skirt of floral design, with a rose-cut diamond face and ruby and sapphire head piece, to the ruby detail ballet flats; *signed John Rubel Co.; mounted in 18k gold; 3 in.*

**\$40,000 - 70,000**



166

166

**A VERY FINE 18K GOLD AND GEM-SET BALLERINA BROOCH,  
JOHN RUBEL CO., CIRCA 1950**

The graceful ballerina wearing a round brilliant-cut sapphire, ruby and diamond skirt of floral design, with a rose-cut diamond face and ruby and sapphire head piece, to the ruby detail ballet flats; *signed John Rubel Co.; mounted in 18k gold; 3 in.*

**\$40,000 - 70,000**

**END OF SALE**

# Bonhams

AUCTIONEERS SINCE 1793



## Elegant Embellishments

Featuring the RenLu Collection

New York | September 21, 2020

### INQUIRIES

Dessa Goddard  
+1 (415) 503 3333  
[asian.us@bonhams.com](mailto:asian.us@bonhams.com)  
[bonhams.com/chineseart](http://bonhams.com/chineseart)

Bruce Maclaren  
+1 (917) 206 1677  
[bruce.maclaren@bonhams.com](mailto:bruce.maclaren@bonhams.com)



Asia Week  
at Bonhams

# DIAMOND INDEX

Lot No.	Carat	Cut/Shape	Color	Clarity	Laboratory
25	0.58	Round Brilliant	F	VS1	GIA
62	5.82	Round Brilliant	U-V	VS1	GIA
64	7.10	Round Brilliant	Q-R	VVS1	GIA
65	8.47	Round Brilliant	Q-R	VS1	GIA
70	2.54	Rectangular	Fancy Intense Yellow	VS2	GIA
77	15.52	Old-Mine	N	SI1	GIA
83	4.90	Round Brilliant	U-V	SI2	GIA
105	5.01	Marquise	D	VVS1	GIA
106	6.03	Square Brilliant	I	VS2	GIA
129	0.95	Marquise	Fancy Pink-Brown	I2	GIA
	1.25	Pear	Fancy Brown-Orange	I1	GIA
131	4.03	Round Brilliant	Fancy Yellow	VVS2	GIA
134	1.14	Round Brilliant	K	VS1	GIA
	1.22	Round Brilliant	J	VS2	GIA

\* next to color - not tested for origin of color

\* next to piece - other significant stones within the piece

\* next to weight - approximate weight

\* next to cert - lab graded color only

\* next to lot number - Bonhams specialists disagree with the grade. Please see a specialist for details.

This list is provided for your convenience based on the opinion of our gemologists.

It in no way represents a guarantee or warranty.

Bonhams is not responsible for any discrepancies between this information and other opinions.



CERTIFIED RUBY INDEX

Lot No.	Carat/Dimensions	Cut/Shape	Origin	Treatment	Laboratory Report
18	0.51	Oval	Burma (Myanmar)	None	AGL
121	2=2.33	Oval	Burma (Myanmar)	None	AGL

CERTIFIED SAPPHIRE INDEX

Lot No.	Carat/Dimensions	Cut/Shape	Origin	Treatment	Laboratory Report
23	9.06	Oval		None	GIA
25	8=8.40	Pear	Ceylon (Sri Lanka)	None	AGL
68	9.19	Cushion	Ceylon (Sri Lanka)	None	AGL
87	8.49	Oval	Ceylon (Sri Lanka)	None	AGL
123	1.72	Oval	Burma (Myanmar)	None	AGL
148	6.95	Cushion	Kashmir	None	AGL + Gubelin
149	9.23	Cushion	Kashmir	None	AGL + Gubelin

CERTIFIED EMERALD INDEX

Lot No.	Carat/Dimensions	Cut/Shape	Origin	Treatment	Laboratory Report
69	1.50	Round Brilliant	Colombia	None	AGL
85	5.25	Cabochon	Colombia	Minor Traditional	AGL

CERTIFIED PEARL INDEX

Lot No.	Carat/Dimensions	Cut/Shape	Origin	Treatment	Laboratory Report
75	Button	10.88mm	Natural Saltwater	None	GIA

CERTIFIED SPINEL INDEX

Lot No.	Carat/Dimensions	Cut/Shape	Origin	Treatment	Laboratory Report
107	10.83	Rectangular	Burma (Myanmar)	None	GRS
125	3.32	Cushion	Burma (Myanmar)	None	AGL



# Conditions of sale

The following Conditions of Sale, as amended by any published or posted notices or verbal announcements during the sale, constitute the entire terms and conditions on which property listed in the catalog shall be offered for sale or sold by Bonhams & Butterfields Auctioneers Corp. and any consignor of such property for whom Bonhams acts as agent. By participating in this sale, you agree to be bound by these terms and conditions.

If live online bidding is available for the subject auction, additional terms and conditions of sale relating to online bidding will apply; see [www.bonhams.com/WebTerms](http://www.bonhams.com/WebTerms) for the supplemental terms. As used herein, "Bonhams," "we" and "us" refer to Bonhams & Butterfields Auctioneers Corp.

1. As used herein, the term "bid price" means the price at which a lot is successfully knocked down to the buyer. The term "purchase price" means the aggregate of (a) the bid price, (b) a PREMIUM retained by us and payable by the buyer (the "buyer's premium"), EQUAL TO 27.5% OF THE FIRST \$3,000 OF THE BID PRICE, 25% OF THE AMOUNT OF THE BID PRICE ABOVE \$3,000 UP TO AND INCLUDING \$400,000, 20% OF THE AMOUNT OF THE BID PRICE ABOVE \$400,000 UP TO AND INCLUDING \$4,000,000, AND 13.9% OF THE AMOUNT OF THE BID PRICE OVER \$4,000,000, and (c) unless the buyer is exempt by law from the payment thereof, any Alabama, Arizona, California, Colorado, Connecticut, Florida, Georgia, Hawaii, Idaho, Illinois, Iowa, Indiana, Kentucky, Louisiana, Maine, Maryland, Massachusetts, Michigan, Minnesota, Mississippi, Nebraska, Nevada, New Jersey, New York, North Carolina, Ohio, Oklahoma, Pennsylvania, Rhode Island, South Carolina, Texas, Utah, Virginia, Washington, D.C., Washington state, West Virginia, Wisconsin, Wyoming or other state or local sales tax (or compensating use tax) and other applicable taxes. With regard to New York sales tax, please refer to the "Sales and Use Tax" section of these Conditions of Sale.

2. In order to bid at the sale, prospective bidders must submit to Bonhams a completed bidder registration form (appearing at the end of this catalog) and any other requested information or references. New bidders and bidders who have not recently updated their registration information must pre-register to bid at least two business days before the sale. Individuals will be required to provide government-issued proof of identity and proof of address. Entity clients will be required to provide documentation including confirmation of entity registration showing the registered name, confirmation of registered address, documentary proof of officers and beneficial owners, proof of authority to transact on behalf of the entity and government-issued proof of identity for the individual who is transacting on the entity's behalf.

We may also request a financial reference and/or deposit from bidders before approving the bidder registration. In the event a deposit is submitted and you are not the successful bidder, your deposit will be returned to you. If you are the successful bidder, any such deposit will be credited to offset the appropriate portion of the purchase price.

We reserve the right to request further information, including regarding the source of funds, in order to complete bidder identification and registration procedures (including completing any anti-money laundering and/or anti-terrorism financing checks we may require) to our satisfaction. If our bidder identification and registration procedures are not satisfied, we may, in our sole discretion, decline to register any bidder or reject any bid or cancel any sale to such bidder.

Every bidder shall be deemed to act as a principal unless prior to the commencement of the sale there is a written acceptance by Bonhams of a bidder registration form completed and signed by the principal which clearly states that the authorized bidding agent is acting on behalf of the named principal. Absent such written acceptance by Bonhams, any person placing a bid as agent on behalf of another (whether or not such person has disclosed that fact or the identity of the principal) may be jointly and severally

liable with the principal under any contract resulting from the acceptance of a bid. Every bidder shall be responsible for any use of its assigned paddle or bidding account, regardless of the circumstances.

3. You represent and warrant that: (i) you have provided us with true and correct copies of valid identification and proof of residence and, if applicable, financial and/or corporate documents; (ii) neither you, your principal (if applicable, and subject to Bonhams' prior written acceptance pursuant to paragraph 2 above), nor any individual or entity with a beneficial or ownership interest in either or in the purchase transaction is on the Specially Designated Nationals List maintained by the Office of Foreign Assets Control of the U.S. Department of the Treasury nor subject to any other sanctions or embargo program or regulation in effect in the United States, European Union, England and Wales, or other applicable jurisdictions; (iii) if you are acting as an agent for a principal, you have conducted appropriate due diligence into such principal, and agree that Bonhams shall be entitled to rely upon such due diligence; you will retain adequate records evidencing such due diligence for a period of five (5) years following the consummation of the sale, and will make these records available for inspection upon Bonhams' request; (iv) neither the purchase transaction (including your bidding activity) nor the purchase funds are connected with nor derive from any criminal activity, and they are not designed to nor have they or shall they, violate the banking, anti-money laundering, or currency transfer laws or other regulations (including without limitation, import-export laws) of any country or jurisdiction, or further any other unlawful purpose, including without limitation collusion, anti-competitive activity, tax evasion or tax fraud.

You acknowledge and agree that we may rely upon the accuracy and completeness of the foregoing warranties.

4. On the fall of the auctioneer's hammer, the highest bidder shall have purchased the offered lot in accordance and subject to compliance with all of the conditions set forth herein and (a) assumes full risk and responsibility therefor, (b) if requested will sign a confirmation of purchase, and (c) will pay the purchase price in full or such part as we may require for all lots purchased. No lot may be transferred.

Unless otherwise agreed, payment in good, cleared funds is due and payable within five (5) business days following the auction sale. Whenever the buyer pays only a part of the total purchase price for one or more lots purchased, we may apply such payments, in our sole discretion, to the lot or lots we choose. Payment will not be deemed made in full until we have received good, cleared funds for all amounts due. Title in any purchased property will not pass until full and final payment has been received by Bonhams. Accounts must be settled in full before property is released to the buyer. In the event property is released earlier, such release will not affect the passing of title or the buyer's obligation to timely remit full payment.

We reserve the right to refuse to accept payment from a source other than the registered bidder or buyer of record. Once an invoice is issued, we cannot change the buyer's name on an invoice.

Payment for purchases must be made in the currency in which the sale is conducted and may be made in or by (a) cash, up to the amount of US \$5,000 (whether by single or multiple related payments), or the equivalent in the currency in which the sale is conducted, (b) cashier's check or money order, (c) personal check with approved credit drawn on a U.S. bank, (d) wire transfer or other immediate bank transfer, or (e) Visa, MasterCard, American Express or Discover credit, charge or debit card, provided that the registered bidder or buyer's name is printed on the card. A processing fee will be assessed on any returned checks.

To the fullest extent permitted by applicable law, the buyer grants us a security interest in the property, and we may retain as collateral security for the buyer's obligations to us, any property and all monies held or received by us for the

account of the buyer, in our possession. We also retain all rights of a secured party under the California Commercial Code, and you agree that we may file financing statements without your signature. If the foregoing conditions or any other applicable conditions herein are not complied with, in addition to all other remedies available to us and the consignor by law, we may at our election: (a) hold the buyer liable for the full purchase price and any late charges, collection costs, attorneys' fees and costs, expenses and incidental damages incurred by us or the consignor arising out of the buyer's breach; (b) cancel the sale, retaining as liquidated damages all payments made by the buyer; and/or (c) cancel the sale and/or resell the purchased property, at public auction and/or by private sale, and in such event the buyer shall be liable for the payment of all consequential damages, including any deficiencies or monetary losses, and all costs and expenses of such sale or sales, our commissions at our standard rates, all other charges due hereunder, all late charges, collection costs, attorneys' fees and costs, expenses and incidental damages. In addition, where two or more amounts are owed in respect of different transactions by the buyer to us, to Bonhams 1793 Limited and/or to any of our other affiliates, subsidiaries or parent companies worldwide within the Bonhams Group, we reserve the right to apply any monies paid in respect of a transaction to discharge any amount owed by the buyer. If all fees, commissions, premiums, bid prices and other sums due to us from the buyer are not paid promptly as provided in these Conditions of Sale, we reserve the right to impose a finance charge equal to 1.5% per month (or, if lower, the maximum nonusurious rate of interest permitted by applicable law), on all amounts due to us beginning on the 31st day following the sale until payment is received, in addition to other remedies available to us by law.

5. We reserve the right to withdraw any property and to divide and combine lots at any time before such property's auction. Unless otherwise announced by the auctioneer at the time of sale, all bids are per lot as numbered in the catalog and no lots shall be divided or combined for sale.

6. We reserve the right to reject a bid from any bidder, to split any bidding increment, and to advance the bidding in any manner the auctioneer may decide. In the event of any dispute between bidders, or in the event the auctioneer doubts the validity of any bid, the auctioneer shall have sole and final discretion either to determine the successful bidder, re-open the bidding, or to cancel the sale and re-offer and resell the article in dispute. If any dispute arises after the sale, our sales records shall be conclusive in all respects.

We further reserve the right to cancel the sale of any property if (i) you are in breach of your representations and warranties as set forth in paragraph 3 above; (ii) we, in our sole discretion, determine that such transaction might be unlawful or might subject Bonhams or the consignor to any liability to any third party; or (iii) there are any other grounds for cancellation under these Conditions of Sale.

7. If we are prevented by fire, theft or any other reason whatsoever from delivering any property to the buyer or a sale otherwise cannot be completed, our liability shall be limited to the sum actually paid therefor by the buyer and shall in no event include any compensatory, incidental or consequential damages.

8. All lots in the catalog are offered subject to a reserve unless otherwise indicated in the catalog. The reserve is the confidential minimum bid price at which such lot will be sold and it does not exceed the low estimate value for the lot. If a lot is offered subject to a reserve, we may implement such reserve by bidding on behalf of the consignor, whether by opening bidding or continuing bidding in response to other bidders until reaching the reserve. If we have an interest in an offered lot and the proceeds therefrom other than our commissions, we may bid up to the reserve to protect such interest. If the auctioneer determines that any opening or subsequent bid is below the reserve for a lot, (s)he may reject such opening bid and withdraw the item from sale.

CONSIGNORS ARE NOT ALLOWED TO BID ON THEIR OWN ITEMS.

9. Other than as provided in the Limited Right of Rescission with respect to identification of authorship, all property is sold "AS IS" and any statements contained in the catalog or in any advertisement, bill of sale, announcement, condition report, invoice or elsewhere as to period, culture, source, origin, media, measurements, size, quality, rarity, provenance, importance, exhibition and literature of historical relevance, merchantability, fitness for a particular purpose, or physical condition ARE QUALIFIED STATEMENTS OF OPINION AND NOT REPRESENTATIONS, WARRANTIES, OR ASSUMPTION OF LIABILITY. Neither Bonhams nor the consignor shall be responsible for any error or omission in the catalog description of any property. No employee or agent of Bonhams is authorized to make on our behalf or on that of the consignor any representation or warranty, oral or written, with respect to any property.

10. All purchased property shall be removed from the premises at which the sale is conducted by the date(s) and time(s) set forth in the "Buyer's Guide" portion of this catalog. If not so removed, daily storage fees will be payable to us by the buyer as set forth therein. We reserve the right to transfer property not so removed to an offsite warehouse at the buyer's risk and expense, as set forth in more detail in the "Buyer's Guide." Packing and handling of purchased lots are the responsibility of the buyer and at the buyer's entire risk, as are the identification, application for, and cost(s) of obtaining of any necessary export, import, restricted material (e.g. endangered species) or other permit for such lots.

For an additional fee, Bonhams may provide packing and shipping services for certain items as noted in the "Buyer's Guide" section of the catalog.

11. The copyright in the text of the catalog and the photographs, digital images and illustrations of lots in the catalog belong to Bonhams or our licensors. You will not reproduce or permit anyone else to reproduce such text, photographs, digital images or illustrations without our prior written consent. Bonhams and the consignor make no representation or warranty as to whether the buyer acquires any copyrights on the purchase of an item of Property.

12. Bonhams may, in our discretion, as a courtesy and free of charge, execute bids on your behalf if so instructed by you, provided that neither Bonhams nor our employees or agents will be liable for any error or default (whether human or otherwise) in doing so or for failing to do so. Without limiting the foregoing, Bonhams (including our agents and employees) shall not be responsible for any problem relating to telephone, online, or other bids submitted remotely through any means, including without limitation, any telecommunications or internet fault or failure, or breakdown or problems with any devices or online platforms, including third-party online platforms, regardless of whether such issue arises with our, your, or such third-party's technology, equipment, or connection. By participating at auction by telephone or online, bidders expressly consent to the recording of their bidding sessions and related communications with Bonhams and our employees and agents, and acknowledge their acceptance of these Conditions of Sale as well as any additional terms and conditions applicable to any such bidding platform or technology.

13. These Conditions of Sale shall bind the successors and assigns of all bidders and buyers and inure to the benefit of our successors and assigns. No waiver, amendment or modification of the terms hereof (other than posted notices or oral announcements during the sale) shall bind us unless specifically stated in writing and signed by us. No act or omission of Bonhams, its employees or agents, nor any failure thereof to exercise any remedy hereunder, shall operate or be deemed to operate as a waiver of Bonhams' rights under these Conditions of Sale. If any part of these Conditions of Sale is for any reason invalid or unenforceable, the rest shall remain valid and enforceable.

14. These Conditions of Sale and the buyer's and our respective rights and obligations hereunder shall be governed by and construed and enforced in accordance with the laws of the State of California. Any dispute, controversy or claim arising out of or relating to this agreement, or the breach, termination or validity thereof, brought by or against Bonhams (but not including claims brought against the consignor by the buyer of lots consigned hereunder) shall be resolved by the procedures set forth below.

15. You accept and agree that Bonhams will hold and process your personal information and may share and use it as required by law and as described in, and in line with Bonhams' Privacy Policy, available at website at [www.bonhams.com/legals/](http://www.bonhams.com/legals/). If you desire access, update, or restriction to the use of your personal information, please email [data.protection@bonhams.com](mailto:data.protection@bonhams.com).

## SALES AND USE TAX

New York sales tax is charged on the hammer price, buyer's premium and any other applicable charges on any property collected or delivered in New York State, regardless of the state or country in which the buyer resides or does business. Buyers who make direct arrangements for collection by a shipper who is considered a "private" or "contract" carrier by the New York Department of Taxation and Finance will be charged New York sales tax, regardless of the destination of the property. Property collected for delivery to a destination outside of New York by a shipper who is considered a "common carrier" by the New York Department of Taxation and Finance (e.g. United States Postal Service, United Parcel Service, and FedEx) is not subject to New York sales tax, but if it is delivered into any state in which Bonhams is registered or otherwise conducts business sufficient to establish a nexus, Bonhams may be required by law to collect and remit the appropriate sales tax in effect in such state. Property collected for delivery outside of the United States by a freight-forwarder who is registered with the Transportation Security Administration ("TSA") is not subject to New York sales tax.

## MEDIATION AND ARBITRATION PROCEDURES

(a) Within 30 days of written notice that there is a dispute, the parties or their authorized and empowered representatives shall meet by telephone and/or in person to mediate their differences. If the parties agree, a mutually acceptable mediator shall be selected and the parties will equally share such mediator's fees. The mediator shall be a retired judge or an attorney familiar with commercial law and trained in or qualified by experience in handling mediations. Any communications made during the mediation process shall not be admissible in any subsequent arbitration, mediation or judicial proceeding. All proceedings and any resolutions thereof shall be confidential, and the terms governing arbitration set forth in paragraph (c) below shall govern.

(b) If mediation does not resolve all disputes between the parties, or in any event no longer than 60 days after receipt of the written notice of dispute referred to above, the parties shall submit the dispute for binding arbitration before a single neutral arbitrator. Such arbitrator shall be a retired judge or an attorney familiar with commercial law and trained in or qualified by experience in handling arbitrations. Such arbitrator shall make all appropriate disclosures required by law. The arbitrator shall be drawn from a panel of a national arbitration service agreed to by the parties, and shall be selected as follows: (i) If the national arbitration service has specific rules or procedures, those rules or procedures shall be followed; (ii) If the national arbitration service does not have rules or procedures for the selection of an arbitrator, the arbitrator shall be an individual jointly agreed to by the parties. If the parties cannot agree on a national arbitration service, the arbitration shall be conducted by the American Arbitration Association, and the arbitrator shall be selected in accordance with the Rules of the American Arbitration Association. The arbitrator's award shall be in writing and shall set forth findings of fact and legal conclusions.

(c) Unless otherwise agreed to by the parties or provided by the published rules of the national arbitration service:

- (i) the arbitration shall occur within 60 days following the selection of the arbitrator;
- (ii) the arbitration shall be conducted in the designated location, as follows: (A) in any case in which the subject auction by Bonhams took place or was scheduled to take place in the State of New York or Connecticut or the Commonwealth of Massachusetts, the arbitration shall take place in New York City, New York; (B) in all other cases, the arbitration shall take place in the city of San Francisco, California; and
- (iii) discovery and the procedure for the arbitration shall be as follows:

- (A) All arbitration proceedings shall be confidential;
- (B) The parties shall submit written briefs to the arbitrator no later than 15 days before the arbitration commences;
- (C) Discovery, if any, shall be limited as follows: (i) Requests for no more than 10 categories of documents, to be provided to the requesting party within 14 days of written request thereof; (ii) No more than two (2) depositions per party, provided however, the deposition(s) are to be completed within one (1) day; (iii) Compliance with the above shall be enforced by the arbitrator in accordance with California law;
- (D) Each party shall have no longer than eight (8) hours to present its position. The entire hearing before the arbitrator shall not take longer than three (3) consecutive days;
- (E) The award shall be made in writing no more than 30 days following the end of the proceeding. Judgment upon the award rendered by the arbitrator may be entered by any court having jurisdiction thereof.

To the fullest extent permitted by law, and except as required by applicable arbitration rules, each party shall bear its own attorneys' fees and costs in connection with the proceedings and shall share equally the fees and expenses of the arbitrator.

## LIMITED RIGHT OF RESCISSION

If within one (1) year from the date of sale, the original buyer (a) gives written notice to us alleging that the identification of Authorship (as defined below) of such lot as set forth in the **BOLD TYPE** heading of the catalog description of such lot (as amended by any saleroom notices or verbal announcements during the sale) is not substantially correct based on a fair reading of the catalog (including the terms of any glossary contained therein), and (b) within 10 days after such notice returns the lot to us in the same condition as at the time of sale, and (c) establishes the allegation in the notice to our satisfaction (including by providing one or more written opinions by recognized experts in the field, as we may reasonably require), then the sale of such lot will be rescinded and, unless we have already paid to the consignor monies owed him in connection with the sale, the original purchase price will be refunded.

If, prior to receiving such notice from the original buyer alleging such defect, we have paid the consignor monies owed him in connection with the sale, we shall pay the original buyer the amount of our commissions, any other sale proceeds to which we are entitled and applicable taxes received from the buyer on the sale and make demand on the consignor to pay the balance of the original purchase price to the original buyer. Should the consignor fail to pay such amount promptly, we may disclose the identity of the consignor and assign to the original buyer our rights against the consignor with respect to the lot the sale of which is sought to be rescinded. Upon such disclosure and assignment, any liability of Bonhams as consignor's agent with respect to said lot shall automatically terminate.

The foregoing limited right of rescission is available to the original buyer only and may not be assigned to or relied

# Conditions of sale - continued

upon by any subsequent transferee of the property sold. The buyer hereby accepts the benefit of the consignor's warranty of title and other representations and warranties made by the consignor for the buyer's benefit. Nothing in this section shall be construed as an admission by us of any representation of fact, express or implied, obligation or responsibility with respect to any lot. THE BUYER'S SOLE AND EXCLUSIVE REMEDY AGAINST BONHAMS FOR ANY REASON WHATSOEVER IS THE LIMITED RIGHT OF RESCISSION DESCRIBED IN THIS SECTION.

"Authorship" means only the identity of the creator, the period, culture and source or origin of the lot, as the case may be, as set forth in the **BOLD TYPE** heading of the print catalog entry. The right of rescission does not extend to: (a) works of art executed before 1870 (unless these works are determined to be counterfeits created since 1870), as this is a matter of current scholarly opinion which can change; (b) titles, descriptions, or other identification of offered lots, which information normally appears in lower case type below the **BOLD TYPE** heading identifying the Authorship; (c) Authorship of any lot where it was specifically mentioned that there exists a conflict of specialist or scholarly opinion regarding the Authorship of the lot at the time of sale; (d) Authorship of any lot which as of the date of sale was in accordance with the then generally-accepted opinion of scholars and specialists regarding the same; or (e) the identification of periods or dates of creation in catalog descriptions which may be proven inaccurate by means of scientific processes that are not generally accepted for use until after publication of the catalog in which the property is offered or that were unreasonably expensive or impractical to use at the time of such publication.

## LIMITATION OF LIABILITY

EXCEPT AS EXPRESSLY PROVIDED ABOVE, ALL PROPERTY IS SOLD "AS IS." NEITHER BONHAMS NOR THE CONSIGNOR MAKES ANY REPRESENTATION

OR WARRANTY, EXPRESS OR IMPLIED, AS TO THE MERCHANTABILITY, FITNESS OR CONDITION OF THE PROPERTY OR AS TO THE CORRECTNESS OF DESCRIPTION, GENUINENESS, ATTRIBUTION, PROVENANCE OR PERIOD OF THE PROPERTY OR AS TO WHETHER THE BUYER ACQUIRES ANY COPYRIGHTS OR OTHER INTELLECTUAL PROPERTY RIGHTS IN LOTS SOLD OR AS TO WHETHER A WORK OF ART IS SUBJECT TO THE ARTIST'S MORAL RIGHTS OR OTHER RESIDUAL RIGHTS OF THE ARTIST. THE BUYER EXPRESSLY ACKNOWLEDGES AND AGREES THAT IN NO EVENT SHALL BONHAMS BE LIABLE FOR ANY DAMAGES INCLUDING, WITHOUT LIMITATION, ANY COMPENSATORY, INCIDENTAL OR CONSEQUENTIAL DAMAGES. IN NO EVENT SHALL THE AGGREGATE LIABILITY OF BONHAMS AND ITS CONSIGNOR TO A PURCHASER EXCEED THE PURCHASE PRICE ACTUALLY PAID FOR A DISPUTED ITEM OF PROPERTY.

## Seller's guide

### SELLING AT AUCTION

Bonhams can help you every step of the way when you are ready to sell art, antiques and collectible items at auction. Our regional offices and representatives throughout the US are available to service all of your needs. Should you have any further questions, please visit our website at [www.bonhams.com/us](http://www.bonhams.com/us) for more information or call our Client Services Department at +1 (212) 644 9001.

### AUCTION ESTIMATES

The first step in the auction process is to determine the auction value of your property. Bonhams' world-renowned specialists will evaluate your special items at no charge and in complete confidence. You can obtain an auction estimate in many ways:

- Attend one of our Auction Evaluation Events held regularly at our galleries and in other major metropolitan areas. The updated schedule for Bonhams Auction Evaluation Events is available at [www.bonhams.com/us](http://www.bonhams.com/us).
- Call our Client Services Department to schedule a private appointment at one of our galleries. If you have a large collection, our specialists can travel, by appointment, to evaluate your property on site.
- Send clear photographs to us of each individual item, including item dimensions and other pertinent information with each picture. Photos should be sent to Bonhams' address in envelopes marked as "photo auction estimate". Alternatively, you can submit your request using our online form at [www.bonhams.com/us](http://www.bonhams.com/us). Digital images may be attached to the form. Please limit your images to no more than five (5) per item.

### CONSIGNING YOUR PROPERTY

After you receive an estimate, you may consign your property to us for sale in the next appropriate auction. Our staff assists you throughout the process, arranging transportation of your items to our galleries (at the consignor's expense), providing a detailed inventory of your consignment, and reporting the prices realized for each lot. We provide secure storage for your property in our warehouses and all items are insured throughout the auction process. You will receive payment for your property approximately 35 days after completion of sale.

Sales commissions vary with the potential auction value of the property and the particular auction in which the property is offered. Please call us for commission rates.

### PROFESSIONAL APPRAISAL SERVICES

Bonhams' specialists conduct insurance and fair market value appraisals for private collectors, corporations, museums, fiduciaries and government entities on a daily basis. Insurance appraisals, used for insurance purposes, reflect the cost of replacing property in today's retail market. Fair market value appraisals are used for estate, tax and family division purposes and reflect prices paid by a willing buyer to a willing seller.

When we conduct a private appraisal, our specialists will prepare a thorough inventory listing of all your appraised property by category. Valuations, complete descriptions and locations of items are included in the documentation.

Appraisal fees vary according to the nature of the collection, the amount of work involved, the travel distance, and whether the property is subsequently consigned for auction.

Our appraisers are available to help you anywhere and at any time. Please call our Client Services Department to schedule an appraisal.

### ESTATE SERVICES

Since 1865, Bonhams has been serving the needs of fiduciaries – lawyers, trust officers, accountants and executors – in the disposition of large and small estates. Our services are specially designed to aid in the efficient appraisal and disposition of fine art, antiques, jewelry, and collectibles. We offer a full range of estate services, ranging from flexible financial terms to tailored accounting for heirs and their agents to world-class marketing and sales support.

For more information or to obtain a detailed Trust and Estates package, please visit our website at [www.bonhams.com/us](http://www.bonhams.com/us) or contact our Client Services Department.

# Buyer's guide

## BIDDING & BUYING AT AUCTION

Whether you are an experienced bidder or an enthusiastic novice, auctions provide a stimulating atmosphere unlike any other. Bonhams previews and sales are free and open to the public. As you will find in these directions, bidding and buying at auction is easy and exciting. Should you have any further questions, please visit our website at [www.bonhams.com](http://www.bonhams.com) or call our Client Services Department at +1 (212) 644 9001.

## Catalogs

Before each auction we publish illustrated catalogs. Our catalogs provide descriptions and estimated values for each "lot." A lot may refer to a single item or to a group of items auctioned together. The catalogs also include the dates and the times for the previews and auctions. We offer our catalogs by subscription or by single copy. For information on subscribing to our catalogs, you may refer to the subscription form in this catalog, call our Client Services Department, or visit our website at [www.bonhams.com/us](http://www.bonhams.com/us).

## Previews

Auction previews are your chance to inspect each lot prior to the auction. We encourage you to look closely and examine each object on which you may want to bid so that you will know as much as possible about it. Except as expressly set forth in the Conditions of Sale, items are sold "as is" and with all faults; illustrations in our catalogs, website and other materials are provided for identification only. At the previews, our staff is always available to answer your questions and guide you through the auction process. Condition reports may be available upon request.

## Estimates

Bonhams catalogs include low and high value estimates for each lot, exclusive of the buyer's premium and tax. The estimates are provided as an approximate guide to current market value based primarily on previous auction results for comparable pieces, and should not be interpreted as a representation or prediction of actual selling prices. They are determined well in advance of a sale and are subject to revision. Please contact us should you have any questions about value estimates.

## Reserves

Unless indicated by the  $\alpha$  symbol next to the lot number, which denotes no reserve, all lots in the catalog are subject to a reserve. The reserve is the minimum auction price that the consignor is willing to accept for a lot. This amount is confidential and does not exceed the low estimate value.

## Auction House's Interest in Property Offered at Auction

On occasion, Bonhams may offer property in which it has an ownership interest in whole or in part or otherwise has an economic interest. Such property, if any, is identified in the catalog with a  $\blacktriangle$  symbol next to the lot number(s).

Bonhams may also offer property for a consignor that has been guaranteed a minimum price for its property by Bonhams or jointly by Bonhams and a third party. Bonhams and any third parties providing a guarantee may benefit financially if the guaranteed property is sold successfully and may incur a financial loss if its sale is not successful. Such property, if any, is identified in the catalog with a  $\circ$  symbol next to the lot number(s).

## Bidding at Auction

At Bonhams, you can bid in many ways: in person, via absentee bid, over the phone, or via Bonhams' live online bidding facility. Absentee bids can be submitted in person, online, via fax or via email.

Valid Bonhams client accounts are required to participate in bidding activity. You can obtain registration information online, at the reception desk or by calling our Client Services Department.

By bidding at auction, whether in person or by agent, by absentee bid, telephone, online or other means, the buyer or bidder agrees to be bound by the Conditions of Sale.

Lots are auctioned in consecutive numerical order as they appear in the catalog. Bidding normally begins below the low estimate. The auctioneer will accept bids from interested

parties present in the saleroom, from telephone bidders, and from absentee bidders who have left written bids in advance of the sale. The auctioneer may also execute bids on behalf of the consignor by placing responsive or consecutive bids for a lot up to the amount of the reserve, but never above it.

We assume no responsibility for failure to execute bids for any reason whatsoever.

## In Person

If you are planning to bid at auction for the first time, you will need to register at the reception desk in order to receive a numbered bid card. To place a bid, hold up your card so that the auctioneer can clearly see it. Decide on the maximum auction price that you wish to pay, exclusive of buyer's premium and tax, and continue bidding until your bid prevails or you reach your limit. If you are the successful bidder on a lot, the auctioneer will acknowledge your paddle number and bid amount.

## Absentee Bids

As a service to those wishing to place bids, we may at our discretion accept bids without charge in advance of auction online or in writing on bidding forms available from us. "Buy" bids will not be accepted; all bids must state the highest bid price the bidder is willing to pay. Our auction staff will try to bid just as you would, with the goal of obtaining the item at the lowest bid price possible. In the event identical bids are submitted, the earliest bid submitted will take precedence. Absentee bids shall be executed in competition with other absentee bids, any applicable reserve, and bids from other auction participants. A friend or agent may place bids on your behalf, provided that we have received your written authorization prior to the sale. Absentee bid forms are available in our catalogs, online at [www.bonhams.com/us](http://www.bonhams.com/us), at offsite auction locations, and at our San Francisco, Los Angeles and New York galleries.

## By Telephone

Under special circumstances, we can arrange for you to bid by telephone. To arrange for a telephone bid, please contact our Client Services Department a minimum of 24 hours prior to the sale.

## Online

We offer live online bidding for most auctions and accept absentee bids online for all our auctions. Please visit [www.bonhams.com/us](http://www.bonhams.com/us) for details.

## Bid Increments

Bonhams generally uses the following increment multiples as bidding progresses:

\$50-200.....	by \$10s
\$200-500.....	by \$20/50/80s
\$500-1,000.....	by \$50s
\$1,000-2,000.....	by \$100s
\$2,000-5,000.....	by \$200/500/800s
\$5,000-10,000.....	by \$500s
\$10,000-20,000.....	by \$1,000s
\$20,000-50,000.....	by \$2,000/5,000/8,000s
\$50,000-100,000.....	by \$5,000s
\$100,000-200,000.....	by \$10,000s
above \$200,000.....	at auctioneer's discretion

**The auctioneer may split or reject any bid at any time at his or her discretion as outlined in the Conditions of Sale.**

## Currency Converter

Solely for the convenience of bidders, a currency converter may be provided at Bonhams' auctions. The rates quoted for conversion of other currencies to U.S. Dollars are indications only and should not be relied upon by a bidder, and neither Bonhams nor its agents shall be responsible for any errors or omissions in the operation or accuracy of the currency converter.

## Buyer's Premium

A buyer's premium is added to the winning bid price of each individual lot purchased, at the rates set forth in the Conditions of Sale. The winning bid price plus the premium constitute the purchase price for the lot. Applicable sales taxes are computed based on this figure, and the total becomes your final purchase price. Unless specifically illustrated and noted, fine art frames are not included in the estimate or purchase price. Bonhams accepts no liability for damage or loss to frames during storage or shipment.

All sales are final and subject to the Conditions of Sale found in our catalogs, on our website, and available at the reception desk.

## Payment

All buyers are asked to pay and pick up by 3pm on the business day following the auction. Payment may be made to Bonhams by cash, checks drawn on a U.S. bank, money order, wire transfer, or by Visa, MasterCard, American Express or Discover credit or charge card or debit card. All items must be paid for within 5 business days of the sale. Please note that payment by personal or business check may result in property not being released until purchase funds clear our bank. For payments sent by mail, please remit to Cashier Department, 220 San Bruno Avenue, San Francisco, CA 94103.

## Sales Tax

Residents of states listed in Paragraph 1 of the Conditions of Sale must pay applicable sales tax. Other state or local taxes (or compensation use taxes) may apply. Sales tax will be automatically added to the invoice unless a valid resale number has been furnished or the property is shipped via common carrier to destinations outside the states listed in the Conditions of Sale. If you wish to use your resale license please contact Cashiers for our form.

## Shipping & Removal

Bonhams can accommodate shipping for certain items. Please contact our Cashiers Department for more information or to obtain a quote. Carriers are not permitted to deliver to PO boxes.

International buyers are responsible for all import/export customs duties and taxes. An invoice stating the actual purchase price will accompany all international purchases.

## Collection of Purchases

Please arrange for the packing and transport of your purchases prior to collection at our office. If you are sending a third party shipper, please request a release form from us and return it to +1 (212) 644 9009 prior to your scheduled pickup. To schedule collection of purchases, please call +1 (212) 461 6526.

## Auction Results

All you need is a touch-tone telephone and the lot number. Auction results are usually available on the next business day following the sale or online at [www.bonhams.com/us](http://www.bonhams.com/us).



# Important Names & Notices

## DIAMONDS, COLORED STONES & PEARLS

The Jewelry department of Bonhams & Butterfields recognizes that there are many various forms of treatments and enhancements used in diamonds and colored stones in order to improve their appearance and or color. Techniques such as heat treatment have been used to improve the color and transparency of both sapphires and rubies in addition to other gemstones. Techniques such as oiling have been used to enhance the clarity of emeralds while dying has been used to effect the color of jade. Techniques such as heat treatment, oiling, resin impregnation, irradiation, color diffusion, dying, fracture filling, and HTHP are just a few off the techniques that are in use today. Prospective buyers are therefore reminded that unless otherwise noted in our catalog description it must be assumed that some form of enhancement may have been used and that such treatment may not always be permanent or detectable and that our estimates have taken such possibilities into account. As a matter of policy, Bonhams & Butterfields endeavors to obtain certificates from recognized gemological laboratories when such certificates are deemed crucial to the authenticity of a gemstone. It is not possible however to gain certificates for all items offered for sale and it is therefore recommended where there is no mention of a certificate that all prospective buyers consult with one of our department specialists prior to purchase of such items.

PLEASE NOTE: A number of laboratories issue certificates that give more detailed descriptions of gemstones, however there may not be consensus between different laboratories on the degrees, or types of treatment for any particular gemstone. Neither is there necessarily consensus between different laboratories, or private appraisers, on the grading of diamonds. All gemstone weights are approximations only and although an independent laboratory grading may be used in the catalog text, we cannot guarantee such gradings.

Images shown may appear smaller or larger than actual size.

Although we endeavor to mention in our descriptions significant defects, needed repairs, absent stones and the like, **WE DO NOT GUARANTEE THAT THE DESCRIPTIONS ARE COMPREHENSIVE.** Please examine all lots carefully. It is the responsibility of the prospective bidder, or his agent, to determine the condition of lots during the preview. Condition reports have been created for most lots in this auction, and are available upon request. Please contact the Jewelry department at least two days prior to the sale date for additional information.

## REGULATED SPECIES MATERIALS AND CITES PERMITS

The export of a lot from the United States or import into certain countries may be subject to export or import regulations, licensure and/or other restrictions; in particular, lots containing plant or animal materials such as ivory, rhinoceros horn, tortoiseshell, coral, whalebone or certain types of woods, irrespective of age or value, may require the granting of one or more export or import licenses or certificates, or may be banned from import altogether by some countries. Moreover, the ability to obtain an export license or certificate does not insure the ability to obtain an import license or certificate in another country. Lots that contain such regulated species materials may also not be eligible for exportation or for re-importation into the United States if they are not at least 100 years of age, and, under current law, lots containing African Elephant Ivory may no longer be re-imported into the United States regardless of age. In addition, resales of lots containing certain regulated species materials may be subject to restrictions in some jurisdictions.

Lots noted in the catalog with a **Y** next to the lot number contain one or more such regulated plant or animal materials. **It is the buyer's responsibility to investigate any such restrictions and to obtain any relevant export or import licenses. Please note that this process is governed by local authorities and may take considerable time. Regardless of any delay in the obtaining of an export or import license or certificate or denial of a license's or certificate's issuance, purchased lots shall be paid for in accordance with the Conditions of Sale, and any such delay or denial shall not serve as the basis for cancellation of any sale.** Prospective buyers are advised to obtain information from the relevant regulatory authorities regarding export and import restrictions, requirements, and costs prior to bidding.

Prospective buyers should also check with their local (e.g. state) regulatory authorities regarding any local restrictions and/or permit requirements that may apply with respect to purchases of regulated species materials, including without limitation purchases of items containing elephant ivory or rhino horn. For example, we are advised that New York buyers of any lot containing elephant or mammoth ivory or rhino horn will be responsible for obtaining a New York State permit before taking possession of the lot within New York State, and that the State of New Jersey has banned the import of items containing elephant or marine mammal ivory or rhino horn into that state.

Upon request, Bonhams can refer the purchaser to a third party agent to assist the purchaser in attempting to obtain the appropriate licenses and/or certificates. However, there is no assurance that any necessary licenses or certificates can be obtained. Please contact the Specialist Department for a suggested list of shipping agents prior to placing a bid if you are uncertain as to whether a lot is subject to export/import license or certificate requirements or related restrictions.

## WATCHES

Although we endeavor to mention in our descriptions significant defects, needed repairs, absent stones and the like, **WE DO NOT GUARANTEE THAT THE DESCRIPTIONS ARE COMPREHENSIVE.** Please examine all watches carefully. It is the responsibility of the prospective bidder, or his agent, to determine the condition of watches during the preview. Except as expressly set forth in the Conditions of Sale, all watches are sold "as is". We do not guarantee the accuracy or operation of any watch function such as timekeeping, chronograph, calendar, repeater or register.

We make no judgments as to whether diamond dials or diamond bezels originated at the factory or are later additions.

# Auction Registration Form

(Attendee / Absentee / Online / Telephone Bidding)

Please circle your bidding method above.

<input type="checkbox"/>	<input type="checkbox"/>	<input type="checkbox"/>	<input type="checkbox"/>
--------------------------	--------------------------	--------------------------	--------------------------

**Paddle number (for office use only)**

**General Notice:** This sale will be conducted in accordance with Bonhams Conditions of Sale, and your bidding and buying at the sale will be governed by such terms and conditions. Please read the Conditions of Sale in conjunction with the Buyer's Guide relating to this sale and other published notices and terms relating to bidding. Payment by personal or business check may result in your property not being released until purchase funds clear our bank. Checks must be drawn on a U.S. bank.

**Notice to Absentee Bidders:** In the table below, please provide details of the lots on which you wish to place bids at least 24 hours prior to the sale. Bids will be rounded down to the nearest increment. Please refer to the Buyer's Guide in the catalog for further information relating to instructions to Bonhams to execute absentee bids on your behalf. Bonhams will endeavor to execute bids on your behalf but will not be liable for any errors or non-executed bids.

**Notice to First Time Bidders:** New clients are requested to provide photographic proof of ID - passport, driving license, ID card, together with proof of address - utility bill, bank or credit card statement etc. Corporate clients should also provide a copy of their articles of association / company registration documents, together with a letter authorizing the individual to bid on the company's behalf. Failure to provide this may result in your bids not being processed. For higher value lots you may also be asked to provide a bankers reference.

**Notice to online bidders:** If you have forgotten your username and password for [www.bonhams.com](http://www.bonhams.com), please contact Client Services.

**If successful**

I will collect the purchases myself ☐  
Please contact me with a shipping quote (if applicable) ☐  
I will arrange a third party to collect my purchase(s) ☐

**Please email or fax the completed Registration Form and requested information to:**

Bonhams Client Services Department  
580 Madison Avenue  
New York, New York 10022  
Tel +1 (212) 644 9001  
Fax +1 (212) 644 9009  
[bids.us@bonhams.com](mailto:bids.us@bonhams.com)

# Bonhams

<b>Sale title:</b> New York Jewels	<b>Sale date:</b> Tuesday, July 28 2020
<b>Sale no.</b> 26206	<b>Sale venue:</b> New York
<b>General Bid Increments:</b> \$10 - 200 .....by 10s \$200 - 500 .....by 20 / 50 / 80s \$500 - 1,000 .....by 50s \$1,000 - 2,000 .....by 100s \$2,000 - 5,000 .....by 200 / 500 / 800s \$5,000 - 10,000 .....by 500s \$10,000 - 20,000 .....by 1,000s \$20,000 - 50,000 .....by 2,000 / 5,000 / 8,000s \$50,000 - 100,000 .....by 5,000s \$100,000 - 200,000 .....by 10,000s above \$200,000 .....at the auctioneer's discretion The auctioneer has discretion to split any bid at any time.	
Customer Number	Title
First Name	Last Name
Company name (to be invoiced if applicable)	
Address	
City	County / State
Post / Zip code	Country
Telephone mobile	Telephone daytime
Telephone evening	Fax
Telephone bidders: indicate primary and secondary contact numbers by writing ① or ② next to the telephone number.	
E-mail (in capitals) _____ By providing your email address above, you authorize Bonhams to send you marketing materials and news concerning Bonhams and partner organizations. Bonhams does not sell or trade email addresses.	
I am registering to bid as a private client <input type="checkbox"/>	I am registering to bid as a trade client <input type="checkbox"/>
Resale: please enter your resale license number here _____ We may contact you for additional information.	

SHIPPING	
Shipping Address (if different than above):	
Address: _____	Country: _____
City: _____	Post/ZIP code: _____

**Please note that all telephone calls are recorded.**

Type of bid (A-Absentee, T-Telephone)	Lot no.	Brief description (In the event of any discrepancy, lot number and not lot description will govern.) If you are bidding online there is no need to complete this section.	MAX bid in US\$ (excluding premium and applicable tax) Emergency bid for telephone bidders only*

**You instruct us to execute each absentee bid up to the corresponding bid amount indicated above.**

\* Emergency Bid: A maximum bid (exclusive of Buyer's Premium and tax) to be executed by Bonhams only if we are unable to contact you by telephone or should the connection be lost during bidding.

BY SIGNING THIS FORM YOU AGREE THAT YOU HAVE READ AND UNDERSTAND OUR CONDITIONS OF SALE AND SHALL BE LEGALLY BOUND BY THEM, AND YOU AGREE TO PAY THE BUYER'S PREMIUM, ANY APPLICABLE TAXES, AND ANY OTHER CHARGES MENTIONED IN THE BUYER'S GUIDE OR CONDITIONS OF SALE. THIS AFFECTS YOUR LEGAL RIGHTS.	
Your signature:	Date:





**Bonhams**  
580 Madison Avenue  
New York, New York 10022

+1 (212) 644 9001  
bonhams.com

**AUCTIONEERS SINCE 1793**