

Bonhams



European Style:

Furniture and Decorative Arts Through The Centuries

Los Angeles | October 20, 2020



European Style:

Furniture and Decorative Arts Through The Centuries

Los Angeles | Tuesday, October 20, 2020 at 10am

BONHAMS

7601 W. Sunset Boulevard
Los Angeles, California 90046
bonhams.com

Bound pursuant to California
Civil Code Sec. 1812.600: Bond
No. 57BSBGL0808

PREVIEW

Due to Covid-19, Bonhams' operations and facilities are currently subject to government restrictions. Additional lot information and photographs are available from the specialist department upon request. If possible, and in accordance with government guidelines, lots will be made available for in-person viewing by appointment only on the following dates:

October 16, 12 pm to 5 pm
October 17, 12 pm to 5 pm
October 18, 12 pm to 5 pm
October 19, 12 pm to 5 pm

Please check Bonhams.com for further information or contact the specialist department for confirmation before visiting our premises.

SALE NUMBER: 26164

Lots 1 - 451

CATALOG: \$35

BIDS

+1 (323) 850 7500
+1 (323) 850 6090 fax

To bid via the internet please visit
www.bonhams.com/26164

Please note that telephone bids must be submitted no later than 4pm on the day prior to the auction. New bidders must also provide proof of identity and address when submitting bids.

Please contact client services with any bidding inquiries.

Please contact client services with any bidding inquiries.

LIVE ONLINE BIDDING IS AVAILABLE FOR THIS SALE

Please email bids.us@bonhams.com with "Live bidding" in the subject line 48hrs before the auction to register for this service.

Please see pages 144 to 147 for bidder information including Conditions of Sale, after-sale collection and shipment.

INQUIRIES

Anna Hicks
Furniture & Decorative Arts
(323) 436 5463
anna.hicks@bonhams.com

Angela Past
Decorative Arts
(323) 436 5422
angela.past@bonhams.com

Rocco Rich
Paintings
(323) 436 5410
rocco.rich@bonhams.com

Cassandra D'Cruz
Cataloguer
(323) 436 4543
cassandra.dacruz@bonhams.com

Codie Lyons
Administration
(323) 436 5434
codie.lyons@bonhams.com

ILLUSTRATIONS

Front cover: lots 358 & 401
Inside front cover: lot 378 (detail)
Page 3: lot 36
Opposite: lot 101 (detail)
Inside back cover: lot 419
Back cover: lot 3 (detail)

PROPERTY COLLECTION NOTICE

Please note the property will be available for collection at our Los Angeles gallery at the time of the auction. Local, out-of-state and international buyer property will remain available for collection in our Los Angeles gallery after the auction in 5 business days. Please contact the department or cashiers with inquiries or shipping requests.

REGISTRATION IMPORTANT NOTICE

Please note that all customers, irrespective of any previous activity with Bonhams, are required to complete the Bidder Registration Form in advance of the sale. The form can be found at the back of every catalogue and on our website at www.bonhams.com and should be returned by email or post to the specialist department or to the bids department at bids.us@bonhams.com.

To bid live online and / or leave internet bids please go to www.bonhams.com/auctions/26164 and click on the Register to bid link at the top left of the page.



Bonhams

© 2020 Bonhams & Butterfields
Auctioneers Corp. All rights reserved.
Bond No. 57BSBGL0808

OFFSITE SOLD PROPERTY STORAGE INFORMATION

All lots listed on this page if not collected by the date and time listed below, will be transferred to our storage and logistics partner Box, Pack, and Ship who will provide an initial 7 days of free storage, after which point storage fees will apply. Appointments are required and must be made a minimum of 24 hours in advance. Clients can pick up their property from Box, Pack and Ship at 3800 S. Main Street, Los Angeles, CA 90037.

- During this auction, clients will be expected to pick up all purchased property from Bonhams by 5pm, Friday, October 23, 2020.
- Box, Pack, and Ship will charge an uplift fee to transport your items to their warehouse. Small items that can be handled easily by one person will be charged \$50. Larger items that can still be handled by one person will be charged \$85. Large items that require two people to handle will be charged \$100. Charges will be payable directly to Box, Pack, and Ship. Should you choose to have Box, Pack, and Ship deliver or ship your property, this uplift fee will be waived.
- Clients will have 7 days of free storage to retrieve their property or make arrangements with Box, Pack, and Ship to pack and ship their property. Storage fees will begin to accrue on the 8th day of storage.
- Retrieval from Box, Pack and Ship is by appointment only. Clients must call a minimum of 24 hours in advance. Clients can utilize the delivery services offered by Box, Pack, and Ship or clients may make their own arrangements. Please call +1 (800) 674-4705.
- Box, Pack, and Ship is available to ship internationally. They offer importing and exporting services. Clients can select either airfreight or ocean cargo delivery options, which range from door-to-port, door to-airport with door-to-door service also available. Clients can ship one item, co-load or container load at a discounted rate through Box, Pack, and Ship. Please call +1 (800) 674-4705 for more information.
- All purchases not designated for offsite storage will remain onsite at Bonhams for a period of 21 days beginning at the date of the auction. During this 21 day period, clients may remove such property themselves, make arrangements with the Bonhams packaging and shipping department or provide their own shipper for removal of all property. If a client does not retrieve his/her property or finalize shipping arrangements within 21 days, the purchases will be removed to the offsite storage facility of Box, Pack, and Ship. Uplift charges for packing and transport from Bonhams to Box, Pack, and Ship will be charged by Box, Pack, and Ship.
- Payment of the hammer price, premium and any applicable sales taxes must be made directly to Bonhams prior to the release of property. Any removal, storage or other fees due to Box, Pack, and Ship should be made directly to Box, Pack, and Ship.
- Change of shipping address must be authorized by Bonhams Revenue Manager, Martin Romero, before Box, Pack, and Ship will be permitted to re-route your purchases.

LOTS TO BE REMOVED TO STORAGE:

2	61	128	208	340
3	62	129	210	341
4	64	130	212	343
5	65	131	213	350
7	67	132	215	357
11	68	139	217	358
13	73	141	219	359
14	77	143	223	361
15	78	144	224	363
16	79	152	237	372
17	80	154	239	375
18	81	160	240	376
19	82	165	241	380
21	84	166	243	392
31	85	168	247	396
32	87	172	258	400
38	89	173	272	404
39	94	175	274	406
40	98	176	276	408
41	99	178	277	418
44	102	187	281	419
48	103	190	285	425
49	105	196	295	426
50	107	199	296	427
51	108	200	303	428
53	110	203	305	431
55	116	205	307	432
57	118	206	312	434
60	120	207	327	

European Style:

Furniture and Decorative Arts
Through The Centuries





1



2



3

1

A PAIR OF ITALIAN MARBLE INLAID EBONIZED SIDE CHAIRS

17th century and later

height 47in (119 cm); width 18in (46cm); depth 19in (49cm)

\$2,000 - 3,000

2^w

A PAIR OF RENAISSANCE STYLE PATINATED BRONZE TORCHÈRES

height 53 1/2in (136cm)

\$1,000 - 1,500

3^w

AN ITALIAN MARBLE MOUNTED AND EBONIZED CABINET ON STAND

17th century and later

height 76in (193cm); 42in (106cm); depth 20in (51cm)

\$5,000 - 7,000



4



5

4^w

A SET OF FOUR CONTINENTAL PAINTED AND CARVED WOOD FIGURES OF THE FOUR APOSTLES

height of tallest 75 1/2in (192cm)

\$6,000 - 8,000

5^w

A SPANISH BAROQUE WALNUT THREE DRAWER TABLE

height 29 3/4in (75cm); width 59 1/2in (151cm); depth 26in (66cm)

\$2,000 - 3,000

6

A MARBLE HEAD OF A BEARDED MAN

After the Antique

On a marble pedestal.

height overall 22 3/4in (58cm)

\$700 - 900



6



7



8



9



10

7^w

**A PORTUGUESE BAROQUE STYLE BRASS MOUNTED DOUBLE
PEDESTAL DESK AND A SIMILAR ARMCHAIR**

height of desk 32in (81cm); width 59in (151cm); depth 32in (81cm)

\$800 - 1,200

8

**TWO SIMILAR BAROQUE STYLE GILTWOOD AND PAINTED
BRACKETS**

height 28in (71cm); width 17 1/2in (41cm); depth 13 1/2in (34cm)

\$700 - 900

9

TWO FRAMED GERMAN PORCELAIN PLAQUES

Late 19th/early 20th century

Each depicting the Virgin and Child.

height of larger plaque 10 3/4in (27cm); width 8 1/4in (21cm)

\$1,000 - 1,500

10

**A RENAISSANCE REVIVAL STYLE CARVED OAK PLANT STAND
WITH FIFTEEN ROCK CRYSTAL ORBS**

height 34in (87cm); width 21 1/2in (55cm)

\$1,000 - 1,500



11

11^w

**CIRCLE OF GIACOMO NANI (PORT'ERCOLE 1698-1770
NAPLES)**

An opulent floral still life in a garden urn; also a companion painting (a pair)

both oil on canvas

each 71 x 50in (180.4 x 127cm)

\$7,000 - 9,000

12

**A RENAISSANCE STYLE MARBLE INSET GILT BRONZE
MOUNTED AND EBONIZED TABLE CABINET**

height 24 3/4in (63cm); width 17in (43cm); depth 9 1/2in (24cm)

\$4,000 - 6,000



12



13

13^w

A DUTCH BAROQUE PARTIAL GILT WALNUT MIRROR

17th/18th century and later

height 56in (142cm); width 31in (80cm)

\$1,200 - 1,800

14^w

A MATCHED PAIR OF RÉGENCE STYLE WALNUT FAUTEUILS À LA REINE

19th century

height 48in (122cm); width 28in (71cm); depth 22in (57cm)

\$2,000 - 3,000



14



15

15^w

A BAROQUE WALNUT CHEST OF DRAWERS

18th century

height 45in (114cm); width 65in (165cm); depth 23 1/2in (60cm)

\$2,000 - 3,000

16^w

**A NEAPOLITAN ROCOCO MARQUETRY AND PARQUETRY
COMMODE**

18th century

height 34in (86cm); width 56in (142cm); depth 25 1/2in (64cm)

\$3,000 - 5,000



16



17

17^w

**A PAIR OF CONTINENTAL BAROQUE STYLE WALNUT OPEN
ARMCHAIRS**

18th/19th century

height 49 1/2in (126cm); width 28 1/2in (72cm); depth 27in (69cm)

\$2,500 - 3,500



18

18^w

**A PAIR OF SPANISH COLONIAL POLYCHROMED WOOD
OPPOSING FIGURES**

18th century and later

On painted wood pedestals.

height of figures 34in (87cm); height of pedestals 45in (114cm)

\$3,000 - 5,000



19

19^w

**A PAIR OF BAROQUE STYLE SILK NEEDLEPOINT AND
PAINTED WOOD SINGLE LIGHT WALL APPLIQUES**

height 89in (226cm); width 29in (74cm); depth 20in (51cm)

\$3,000 - 5,000

20

A FLEMISH TAPESTRY

18th century

dimensions approximately 105 x 127in (267 x 323cm)

\$5,000 - 7,000



20



21

21^w

AN ITALIAN BAROQUE WALNUT TABLE

18th century

height 31 3/4in (81cm); width 86in (218cm); depth 30 3/4in (78cm)

\$1,500 - 2,000



22 (detail)

22

A RENAISSANCE STYLE CARVED WOOD FIGURAL GROUP OF A MAN SLAYING A LION AND A RENAISSANCE STYLE CARVED WOOD PEDESTAL

The figure initialed W.S.

height of figural group 18in (45cm); height of column 43in (109cm)

\$1,200 - 1,800

23

A PAIR OF RENAISSANCE STYLE PATINATED BRONZE GRAND TOUR ORNAMENTS

Late 19th century

height 19 1/2in (49.5cm)

\$800 - 1,200

24

A PAIR OF FRAMED CONTINENTAL CARVED WOOD PANELS

height overall 40in (102cm); width 33 1/2in (85cm)

\$800 - 1,200

25

A PAIR OF CHINESE FAMILLE VERTE PORCELAIN JARDINIÈRES

height 13in (33cm); diameter 14in (36cm)

\$1,200 - 1,800

26

AN ITALIAN PROVINCIAL WALNUT SINGLE DRAWER TABLE

18th century and later

height 30 1/2in (77cm); width 47in (119cm); depth 27in (69cm)

\$800 - 1,200



23



24



25



26



27



28



29



30

27
A PAIR OF CARVED MARBLE FIGURES OF ROMAN SOLDIERS
On faux malachite bases.
overall height 25in (63cm)

\$2,000 - 3,000

28
A NEOCLASSICAL STYLE MOSAIC TOP MAHOGANY CENTER TABLE
height 28 1/2in (67cm); width 38in (96cm)

\$2,000 - 3,000

29
A SPECIMEN MARBLE TOP EBONIZED CENTER TABLE
height 28in (71cm); diameter 27in (69cm)

\$1,000 - 1,500

30
TWO NEOCLASSICAL STYLE CARVED MARBLE BUSTS
One inscribed Napoleon and the other HPA.
height 26in (66cm)

\$3,000 - 5,000



31

31^w

MANNER OF BARTOLOMEO BIMBI

A still life of flowers and fruit in an architectural niche
oil on canvas

74 1/2 x 71in (189.2 x 180.4cm)

\$5,000 - 7,000

32^w

A PAIR OF ITALIAN BAROQUE GILT AND PAINTED WOOD CONSOLES

18th century

height 37in (94cm); width 73in (185cm); depth 26 1/2in (67cm)

\$12,000 - 18,000



32



33



34



35



36

33
A FRAMED GERMAN PORCELAIN PLAQUE DEPICTING A SAINT

Late 19th century
Impressed KPM with scepter.
overall height 18in (54cm); width 15 1/4in (39cm)

\$1,000 - 1,500

34
A FRAMED GERMAN PORCELAIN PLAQUE DEPICTING THE MADONNA

Late 19th century
Impressed KPM with scepter.
height 18in (45cm); width 14in (35cm)

\$1,500 - 2,000

35
TWO FRAMED GERMAN PORCELAIN PLAQUES OF RELIGIOUS WOMEN

Late 19th century
overall height of larger 14 1/2in (37cm); width 12 1/4in (31cm)

\$500 - 700

36
TWO GERMAN PORCELAIN PLAQUES

Late 19th/early 20th century
Depicting the Virgin Mary and the Virgin and Child, both impressed KPM.
diameter of larger plaque 14in (36cm)

\$1,200 - 1,800



37



37

NEOPOLITAN SCHOOL (19TH/20TH CENTURY)

Still lifes with flowers and fruit (a pair)

both oil on canvas

each 17 x 49in (43.2 x 124.4cm)

\$2,500 - 3,500

38^w

AN ITALIAN BAROQUE STYLE BRASS MOUNTED EBONIZED CABINET ON STAND

18th century and later

height overall 59in (150cm); width 30in (76cm); depth 19in (48.5cm)

\$5,000 - 7,000

38



39



40



41



42



43



44



45

39^w

A GERMAN ROCOCO STYLE MARBLE TOP GILT BRONZE MOUNTED PARQUETRY COMMODE

Late 19th/early 20th century
height 33in (84cm); width 51in (129cm); depth 27in (68cm)

\$2,000 - 3,000

40^w

A CONTINENTAL PAINTED LEATHER PANELED FLOOR SCREEN

height 84in (213cm); width of each panel 22in (56cm)

\$2,000 - 3,000

41^w

A PAIR OF FRENCH PROVINCIAL WALNUT FAUTEUILS À LA REINE

Late 18th/early 19th century
height 45in (114cm); width 21in (54cm); depth 21 1/2in (55cm)

\$1,500 - 2,000

42

A CONTINENTAL WALNUT MIRROR

Early 18th century
height 32in (81cm); width 22 1/2in (57cm)

\$1,000 - 1,500

43

A PAIR OF RÉGENCE STYLE PARCEL GILT STOOLS

height 23in (58cm); width 20in (50cm); depth 20in (50cm)

\$1,000 - 1,500

44^w

A PAIR OF LOUIS XV WALNUT FAUTEUILS

Late 19th/early 20th century
height 45in (110cm); width 28in (71cm); depth 25in (64cm)

\$1,000 - 1,500

45

A FLEMISH TAPESTRY

17th/18th century
dimensions approximately 190 x 120in (483 x 305cm)

\$5,000 - 7,000

46

A COLONIAL STYLE BRASS MOUNTED HARDWOOD CELLARETTE

height 20 1/2in (52cm); diameter 18 1/2in (47cm)

\$500 - 700



46



47

47

FOLLOWER OF MELCHIOR DE HONDECOETER (UTRECHT 1636-1695 AMSTERDAM)

The new brood
oil on canvas
31 x 40in (78.8 x 101.6cm)

\$1,500 - 2,000

48^w

A DUTCH BAROQUE MARQUETRY BUREAU

18th century
height 93 3/4in (241cm); width 50in (127cm); depth 24 1/2in (62cm)

\$5,000 - 7,000



48



49

49^w

EMILE KEYMEULEN (BELGIAN, 1840-1882)

A landscape with a shepherd and his family and flock in a forest clearing
signed and dated 'Emile Keymeulen. / 1880.' (lower right)
oil on canvas
39 1/4 x 60 1/2in (99.7 x 153.7cm)

\$2,500 - 3,500



50

50^w

A PAIR OF ITALIAN ROCOCO STYLE CARVED WALNUT MIRRORS

height 65 1/2in (166cm); width 42in (107cm)

\$5,000 - 7,000



51^w

A NEAR PAIR OF ITALIAN ROCOCO STYLE MARBLE TOP PAINTED CONSOLES

Late 18th/early 19th century

height 36 1/2in (93cm); width 53in (135cm); depth 23 1/4in (59cm)

\$5,000 - 7,000



51





52



53



54



55

52
A SPANISH BAROQUE STYLE GILT AND PAINTED WOOD MIRROR

height 41in (104cm); width 33 1/2in (85cm)

\$1,000 - 1,500

53^w
A PROVINCIAL LOUIS XVI WALNUT TABLE

*18th century and later
height 29 1/2in (75cm); width 57in (146cm); depth 35 1/4in (89.5cm)*

\$1,200 - 1,800

54
A PAIR OF CHINESE BLUE AND WHITE PORCELAIN OCTAGONAL JARDINIÈRES ON STANDS

overall height 14in (36cm); diameter 21 1/4in (54cm)

\$1,200 - 1,800

55^w
A PAIR OF LOUIS XV STYLE BEECHWOOD FAUTEUILS

height 39in (99cm); width 29in (73cm); depth 26in (66cm)

\$1,000 - 1,500

56

A FRENCH TAPESTRY

18th century

dimensions approximately 123 x 131in (312 x 333cm)

\$8,000 - 10,000

57^w

A SPANISH BAROQUE OAK FOUR DRAWER TABLE

height 30 1/2in (77cm); width 65 1/2in (166cm); depth 31in (79cm)

\$2,000 - 3,000



56



57



58

58

A CARVED MARBLE TORSO OF A MALE ON A MARBLE PEDESTAL

After the Antique
overall height 45in (114cm)

\$4,000 - 6,000

59

A PAIR OF CHINESE CLOISSONNÉ OVER PORCELAIN VASES ON GILT BRONZE STANDS

height overall 43in (109cm)

\$4,000 - 6,000



59



60

60^w

A SPANISH BAROQUE STYLE WALNUT TRESTLE TABLE

18th century and later
height 31in (79cm); width 79in (201cm); depth 42 1/2in (108cm)

\$1,500 - 2,000



61

61^w

**A PAIR OF GOTHIC STYLE POLYCHROME DECORATED
FIGURES OF THE VIRGIN AND CHRIST WITHIN CARVED
NICHES**

height 120in (304cm); width 42 1/2in (108cm); depth 16in (41cm)

\$7,000 - 9,000



62

62^w

A PAIR OF SPANISH BAROQUE STYLE GILT METAL MOUNTED INLAID CABINETS ON STANDS

height overall 71in (180cm); width 56in (142cm); depth 21in (53cm)

\$5,000 - 7,000



63

63

A POMPEIIAN STYLE CARVED MARBLE CENTER BOWL WITH THIRTY ONE MARBLE ORBS

height 8 1/2in (21.5cm); width 23in (58.5cm); depth 23in (58.5cm)

\$800 - 1,200



64

64^w

FOLLOWER OF RICHARD WILSON R.A (PENEGOES 1713-1782 MOLD)

The water gatherers

oil on canvas

47 1/2 x 56in (120.6 x 142.2cm)

\$2,000 - 3,000



65

65^w

A PAIR OF RÉGENCE STYLE SILVERED WOOD BENCHES

height 21in (53cm); width 45in (114cm); depth 18in (46cm)

\$1,500 - 2,000

66

A BRONZE GROUP OF A NUDE WITH A FAUN

height 23 1/2in (60cm)

\$1,000 - 1,500

67^w

A RENAISSANCE REVIVAL STYLE OAK REFECTORY TABLE

height 31in (79cm); width 133 1/2in (337cm); depth 43 1/2in (110cm)

\$4,000 - 6,000



66



67



68^w

A BAROQUE PAINTED AND PARCEL GILTWOOD FIREPLACE SURROUND

18th century and later

height 101in (256cm); width 68in (173cm); depth 12in (31cm)

\$5,000 - 7,000

69

A PAIR OF GILT METAL MOUNTED CHINESE BLUE AND WHITE PORCELAIN FLOOR VASES

height 40in (102cm)

\$2,000 - 3,000

70

A RENAISSANCE REVIVAL STYLE WALNUT CENTER TABLE

height 32 1/2in (82cm); width 46 1/2in (118cm); depth 28 1/2in (72cm)

\$800 - 1,200

68



69



70



71

71

PAUL VOGLER (FRENCH, 1852-1904)

Cavaliers dans une taverne (a pair)

each signed 'P. Vogler' (lower right)

both oil on canvas

each 9 1/8 x 13in (23.2 x 33.1cm)

\$600 - 800

72

A MARBLE BUST OF A ROMAN SOLDIER

height 19 1/2in (49.5cm)

\$1,000 - 1,500



73^w

A CONTINENTAL PAINTED BUFFET À DEUX CORPS

18th century

height 108in (274cm); width 106in (269cm); depth 20in (51cm)

\$4,000 - 6,000



73



72



74

74

A RÉGENCE STYLE CHINOISERIE DECORATED GILTWOOD CENTER TABLE

height 30 1/2in (77cm); width 40 1/2in (102cm); depth 23in (58cm)

\$3,000 - 5,000

75

A CONTINENTAL SEMI PRECIOUS STONE, ENAMEL, AND SILVER GILT MODEL OF A SHIP

Possibly Austrian

height 19 1/2in (49cm); width 16 1/2in (41cm)

\$4,000 - 6,000



75

76

A BAROQUE STYLE GILTWOOD MIRROR

height 36in (91cm); width 25 1/2in (63cm)

\$700 - 900



76



77

77^w

A RÉGENCE STYLE GILTWOOD FIVE PIECE SALON SUITE

height of settee 45 1/2in (105cm); width 63in (160cm); depth 31 1/2in (80cm)

\$10,000 - 15,000



78

78^w

A CONTINENTAL BAROQUE PAINTED CABINET

18th century

height 101in (257cm); width 55in (141cm); depth 23in (59cm)

\$4,000 - 6,000



79

79^w

A SET OF FOUR NEOCLASSICAL STYLE PART SILVERED WOOD COLUMNS

height 105in (266cm)

\$1,200 - 1,800



80

80^w

A RENAISSANCE STYLE OAK CENTER TABLE

height 31 1/2in (80cm); width 71 1/2in (181cm); depth 38 1/2in (98cm)

\$1,500 - 2,000

81^w

A PAIR OF RÉGENCE WALNUT FAUTEUILS À LA REINE

18th century

height 40in (102cm); width 26in (66cm); depth 22in (56cm)

\$2,500 - 3,500



81



82

82^w

A GERMAN ROCOCO INLAID WALNUT BUREAU

18th century

height 74in (188cm); width 51in (130cm); depth 25in (64cm)

\$3,000 - 5,000



83

83

A PAIR OF GERMAN PORCELAIN COVERED TUREENS

height 21in (53cm); width 15in (38cm)

\$1,200 - 1,800



84

84^w

A SPANISH BAROQUE WALNUT TABLE

18th century and later

height 31in (79cm); width 79in (201cm); depth 43 1/2in (111cm)

\$2,000 - 3,000

85^w

A PAIR OF LOUIS XV STYLE WALNUT FAUTEUILS

19th century

height 40in (101cm); width 28in (71cm); depth 25in (63cm)

\$1,000 - 1,500



85

86

AN ASSEMBLED CHINESE PORCELAIN CABBAGE LEAF DINNER SERVICE

18th century and later

Approximately 75 pieces.

diameter of largest plate 18in (46cm); diameter of largest bowl 15in (38cm); length of tureen 11 1/2in (29.5cm)

\$2,000 - 3,000



86

87^w

A LOUIS XV WALNUT COMMODE

18th century

height 41in (104cm); width 53in (135cm); depth 26in (66cm)

\$1,000 - 2,000



87



88

88

A FLEMISH TAPESTRY

17th/18th century

dimensions approximately 139 x 84in (353 x 213cm)

\$6,000 - 8,000



89

89^w

A RÉGENCE STYLE GILTWOOD MIRROR

19th century

height 72 1/2in (183cm); width 48in (122cm)

\$2,500 - 3,500

90

**A PAIR OF GRAND TOUR STYLE GILT BRONZE MOUNTED
LAPIS INSET GRANITE OBELISKS**

height 33 1/2in (85cm); width 7in (18cm) square

\$2,000 - 3,000



90



91

91

**A PAIR OF NEOCLASSICAL STYLE GILT BRONZE MOUNTED
MARBLE PEDESTALS**

height 45in (114cm); width 12 1/2in (32cm)

\$4,000 - 6,000

92

ITALIAN SCHOOL (18TH/19TH CENTURY)

The Bay of Naples with Vesuvius in the distance
oil on canvas laid down on board
30 1/2 x 48 5/8in (77.5 x 123.5cm)

\$1,500 - 2,000



92

93

TWO CARVED MABLE FIGURAL PLAQUES

Depicting St. John the Apostle and St. Paul.
height 40in (102cm); width 34in (87cm)

\$5,000 - 7,000



93

94^w

A SET OF TEN ITALIAN ROCOCO PAINTED WOOD DINING CHAIRS AND PAIR OF SIMILAR ARMCHAIRS

18th century
height 37in (93cm); width 22in (56cm); depth 21in (53cm)

\$3,000 - 5,000



94



95



96



97



98



99



100

95

A PORTUGUESE BAROQUE STYLE BRASS MOUNTED CHEST OF DRAWERS

height 30in (76cm); width 33 1/2in (85cm); depth 22 1/2in (57cm)

\$800 - 1,200

96

A PAIR OF CHINESE FAMILLE VERTE PORCELAIN JARDINIERES

height 13 1/2in (34cm); diameter 13 1/4in (33cm)

\$1,000 - 1,500

97

A PAIR OF CHINESE METAL MOUNTED WHITE GLAZED PORCELAIN TEA JARS

With keys.

height 18 3/4in (47.5cm)

\$1,000 - 1,500

98^w

A CONTINENTAL WALNUT DRAW LEAF TABLE

18th century

height 31in (78cm); width 57in (144cm); depth 25 1/2in (64cm)

\$800 - 1,200

99^w

A FRENCH PROVINCIAL WALNUT CENTER TABLE

height 29 3/4in (75cm); width 61in (155cm); depth 38in (97cm)

\$1,200 - 1,800

100

A GROUP OF FOUR CONTINENTAL CARVED WOOD FIGURES

height of tallest 25 1/2in (65cm)

\$600 - 800

101

A PAIR OF CHINESE FAMILLE ROSE PORCELAIN JARDINIÈRES ON CARVED WOOD MONKEY STANDS

overall height 40in (102cm)

\$10,000 - 15,000



101





102

102^w

A RÉGENCE WALNUT COMMODE

18th century

height 33 3/4in (86cm); width 59in (150cm); depth 26in (66cm)

\$2,000 - 3,000

103^w

FRENCH SCHOOL (18TH/19TH CENTURY)

An afternoon outing

oil on canvas

83 1/2 x 71 3/4in (212.1 x 182.2cm)

\$4,000 - 6,000



103



104

104

A ROCOCO STYLE PATINATED BRONZE FIGURAL WALL APPLIQUÉ

height 27 1/2in (70cm); width 49in (125cm)

\$1,000 - 1,500

105^w

A SET OF FOUR ITALIAN ROCOCO STYLE WALNUT OPEN ARMCHAIRS

19th century

height 42in (106cm); width 28in (71cm); depth 24in (60cm)

\$3,000 - 5,000



105



106

106

M. CARIER (FRENCH, 19TH CENTURY)

An active village scene with figures meeting and dancing

signed 'M Carier' (lower center)

oil on canvas laid down on masonite

39 x 47 1/2 in (99.1 x 120.7cm)

\$2,000 - 3,000

107

A BAROQUE STYLE OAK CENTER TABLE

height 32 1/2in (82cm); diameter 54in (137cm)

\$3,000 - 5,000



107



108



109



110



111



112



113



114



108^w

A SPANISH BAROQUE WALNUT THREE DRAWER TABLE
height 30 1/2in (78cm); width 65in (165cm); depth 26in (66cm)

\$1,500 - 2,000

109

A PAIR OF CHINESE HARDSTONE FLOWERING PLANTS IN JARDINIÈRES
height 15in (38cm)

\$800 - 1,200

110^w

A CONTINENTAL PAINTED CANVAS FOUR PANEL SCREEN
Late 19th/early 20th century
height 63 1/8in (161cm); width of each panel 19 3/4in (50cm)

\$600 - 800

111

CHARLES JOHN EDWARD LESLIE (BRITISH, 1839-1886)
A tranquil loch with a fisherman
signed 'LESLIE' (lower right)
oil on canvas
18 x 32in (45.7 x 81.3cm)

\$1,000 - 1,500

112

A GEORGE III STYLE MAHOGANY TILT TOP TEA TABLE
height 31in (78cm); diameter 33 1/2in (85cm)

\$500 - 700

113

A BRONZE FIGURE OF A MIDDLE EASTERN HUNTER ON A WOOD BASE
After Alfred Barye (French, 1839 -1882) and Emile -Coriolan Guillemin (French, 1841 -1907)
overall height 24 3/4in (60cm); width of base 10 1/4in (25cm); depth 21in (53cm)

\$1,000 - 1,500

114

A PAIR OF FRAMED ITALIAN MICROMOSAIC, MALACHITE, AND ONYX PLAQUES
overall height 29 1/2in (75cm); width 33in (81cm)

\$3,000 - 5,000

115

AN ITALIAN BAROQUE STYLE FAUX MARBLE TOP GILTWOOD CONSOLE
height 35in (89cm); width 47in (120cm); depth 18in (46cm)

\$1,200 - 1,800



115



116

116^w

A PAIR OF LOUIS XV STYLE MARBLE TOP GILT BRONZE MOUNTED MAHOGANY PEDESTALS

height 55in (140cm); width 18 3/4in (47cm)

\$4,000 - 6,000

117

A LOUIS XV STYLE GILT BRONZE MOUNTED PORCELAIN FIGURAL CLOCK

height 25 1/2in (64cm); width 23in (59cm); depth 13in (33cm)

\$6,000 - 8,000



117



118

118^w

A LOUIS XV STYLE MARBLE TOP GILT BRONZE MOUNTED FRUITWOOD COMMODOE

height 33 1/2in (85cm); width 54in (138cm); depth 23in (53cm)

\$1,500 - 2,000

119

A PAIR OF LOUIS XVI STYLE GILT BRONZE CHENETS

19th century

height 18in (46cm); width 22in (56cm); depth 8in (20cm)

\$2,000 - 3,000



119



120

120^w

A LOUIS XV STYLE LEATHER TOP EBONIZED BUREAU PLAT

18th/19th century

height 30 1/2in (78cm); width 57in (145cm); depth 27 3/4in (70cm)

\$1,000 - 1,500

121

A PAIR OF LOUIS XV GILT BRONZE FIVE-LIGHT CANDELABRA

19th century, signed Germaine

height 31in (79cm)

\$2,500 - 3,500



121



122



123



124



125



126



127

122

A PAIR OF BRONZE BUSTS OF LOUISE AND ALEXANDRE BRONGNIART

After Jean-Antoine Houdon (1741 - 1828), 19th century
height of taller 17 1/2in (45cm)

\$800 - 1,200

123

A PAIR OF LOUIS XV STYLE GILT BRONZE MOUNTED CHINESE PORCELAIN THREE-LIGHT CANDELABRA

height 26in (66cm); width 19in (49cm)

\$2,000 - 3,000

124

A PAIR OF RÉGENCE STYLE GILTWOOD STOOLS

height 18 1/2in (47cm); width 26 1/2in (67cm); depth 20in (51cm)

\$1,000 - 1,500

125

A PAIR OF LOUIS XVI PAINTED FAUTEUILS

height 36in (92cm); width 23in (59cm); depth 28in (71cm)

\$1,500 - 2,000

126

AN ITALIAN NEOCLASSICAL STYLE GILTWOOD JARDINIÈRE

height 29in (74cm); width 39in (99cm); depth 39in (99cm)

\$1,500 - 2,000

127

A LOUIS XVI STYLE GILT BRONZE MOUNTED PARQUETRY AND MAHOGANY CENTER TABLE

height 29in (73cm); diameter 30in (75cm)

\$1,000 - 1,500

128^w

A PAIR OF LOUIS XV STYLE MARBLE TOP GILT BRONZE KINGWOOD COMMDES

height 34 1/2in (88cm); width 49 1/2in (126cm); depth 21 1/2in (55cm)

\$4,000 - 6,000



128



129



130



131



132

129^w

A CONTINENTAL BAROQUE CARVED WALNUT BUFFET

18th century and later

height 48 1/2in (123cm); width 89in (226cm); depth 24in (61cm)

\$2,000 - 3,000

130^w

A BAROQUE STYLE GILT BRONZE MIRROR

diameter 53in (134cm)

\$2,000 - 3,000

131^w

A CONTINENTAL ROCOCO STYLE PARQUETRY AND WALNUT DESK

height 32in (81cm); width 52in (132cm); depth 27 1/2in (70cm)

\$1,200 - 1,800

132

A PAIR OF GERMAN ROCOCO STYLE MARBLE TOP INLAID WALNUT BEDSIDE COMMOTES

19th century

height 30 1/2in (77cm); width 21in (54cm); depth 14 1/2in (37cm)

\$600 - 800



133



134



135



136

133
A PAIR OF ROCOCO STYLE GILT BRONZE GIRANDOLE MIRRORS
height 39in (99.5cm); width 22in (56cm)

\$1,500 - 2,000

134
A FRENCH ROCOCO STYLE PORCELAIN VASE ON A STAND
height 24 1/4in (61cm)

\$600 - 800

135
A NEOCLASSICAL STYLE GILT BRONZE MOUNTED GRANITE URN
height 20 1/2in (52cm); diameter 27in (69cm); depth 22in (56cm)

\$2,500 - 3,500

136
A PAIR OF NEOCLASSICAL STYLE GILT AND PATINATED BRONZE FIGURAL CANDELABRA ON MARBLE PEDESTALS
After Claude Michel Clodion (French, 1738-1814)
height 18 1/2in (47cm)

\$800 - 1,200



137

137

A LOUIS XVI STYLE GILT AND PATINATED BRONZE MANTEL CLOCK

Late 19th century

height 23 1/2in (60cm); width 18 3/4in (48cm); depth 6in (16cm)

\$1,000 - 1,500

138

A PAIR OF TRANSITIONAL LOUIS XV/XVI STYLE GILT BRONZE MOUNTED PARQUETRY SIDE TABLES

height 29 1/2in (75cm); width 19in (48cm); depth 14in (36cm)

\$700 - 900



138

139^w

AN ITALIAN ROCOCO STYLE MARBLE TOP GILTWOOD CENTER TABLE

height 34in (86cm); width 81in (206cm); depth 45in (114cm)

\$10,000 - 15,000



139



140

140
**A PAIR OF LOUIS XVI STYLE GILT BRONZE MOUNTED
 PORPHYRY URNS**
height 24 1/4in (62cm)

\$10,000 - 15,000

141^w
**A PAIR OF LOUIS XVI STYLE MARBLE TOP GILT BRONZE
 MOUNTED MARQUETRY COMMODES**
height 40in (101cm); width 55 1/2in (140cm); depth 20in (50cm)

\$4,000 - 6,000



141





142



143



144



145

142
**A PAIR OF LOUIS XV STYLE GILT BRONZE MOUNTED MARBLE
URNS ON ALABASTER BASES**
height 16in (41cm)

\$600 - 800

143^w
A LOUIS XV STYLE CARVED WALNUT DAYBED
height 31 1/2in (90cm); width 91in (231cm); depth 40in (102cm)

\$1,000 - 1,500

144^w
A PROVINCIAL ITALIAN CARVED WALNUT BENCH
*19th century
height 36in (91cm); width 75in (190cm); depth 27 1/2in (70cm)*

\$1,000 - 1,500

145
**A PAIR OF LOUIS XVI STYLE JAPANNED GILT BRONZE TABLE
ORNAMENTS**
height 13in (33cm)

\$500 - 700



146

146

A SET OF FOUR FRENCH BEADED GLASS AND ROCK CRYSTAL FIVE-LIGHT SCONCES

height 35in (89cm); width 18in (46cm); depth 11 1/2in (29.5cm)

\$3,000 - 5,000

147

A PATINATED BRONZE BUST OF MARIE ANTOINETTE

After Jean-Antoine Houdon (French, 1741-1828)

Signed and dated Jean 1788.

height 35 1/2in (90cm)

\$1,200 - 1,800

148

A LOUIS XVI STYLE MARBLE TOP GILT BRONZE MOUNTED MAHOGANY CENTER TABLE

height 30in (77cm); width 45in (114cm); depth 27 1/2in (70cm)

\$1,500 - 2,000



147



148



149

149

A LOUIS XV STYLE PORCELAIN MOUNTED GILT BRONZE CENTERPIECE

height 30in (76cm); width 22in (56cm)

\$2,000 - 3,000

150

A RÉGENCE STYLE PIETRA DURA TOP GILTWOOD CENTER TABLE

height 32in (82cm); width 47in (119cm)

\$3,000 - 5,000



150



151

151

A PAIR OF SÈVRES STYLE PORCELAIN MARBLE MOUNTED PEDESTALS

height 37 3/4in (96cm); width 14 3/4in (37.5cm) square

\$2,000 - 3,000



152

152^w

**A LOUIS XV STYLE GILT BRONZE AND MIRRORED TABLE
PLATEAU**

height 17in (43cm); width 75in (191cm); depth 37in (94cm)

\$10,000 - 15,000

154

**A PAIR OF TRANSITIONAL LOUIS XV/XVI MARBLE TOP GILT
BRONZE MOUNTED MAHOGANY TABLES**

height 30in (76cm); width 28in (71cm) square

\$1,500 - 2,000

153

**A LOUIS XVI STYLE MARBLE TOP GILT BRONZE MOUNTED
MAHOGANY AND VERNIS MARTIN CABINET**

height 48 1/2in (123cm); width 40 1/2in (103cm); depth 17in (43cm)

\$1,000 - 1,500



153



154



156



155



158



159

155

A PAIR OF BAGUÈS STYLE WROUGHT METAL AND ROCK CRYSTAL TWO-LIGHT SCONCES

height 26in (66cm); width 19 1/2in (49.5cm); depth 6 1/2in (16.5cm)

\$2,000 - 3,000

156

A LOUIS XVI STYLE GILT BRONZE MOUNTED MAHOGANY BUREAU PLAT

height 29 1/2in (74cm); width 33in (83cm); depth 19 1/2in (49cm)

\$2,000 - 3,000

157

No lot

158

A LOUIS XVI STYLE GILT BRONZE AND GLASS MANTEL CLOCK

Late 19th century

The works signed *F. L. Hausburg à Paris*

height 18in (46cm)

\$1,000 - 1,500

159

A PAIR OF LOUIS XV STYLE MARBLE TOP GILT BRONZE MOUNTED MARQUETRY PEDESTALS

height 47in (119cm); width 15in (38cm); depth 15in (38cm)

\$3,000 - 5,000

160^w

A LOUIS XVI STYLE GILT BRONZE MOUNTED WALNUT RÉGULATEUR 'AU CHAR D'APOLLON'

The gilt bronze after a model by Jacques Caffieri, fourth quarter 19th century

The movement stamped *H. BERGES CONSTR / 5 R. DEBELLEYME PARIS*

height 112in (284.5cm); width 20 1/2in (52cm); depth 13 1/2in (33.5cm)

Provenance

Bonhams, Los Angeles, European Furniture and Decorative Arts, 10 June 2013, Lot 4117

\$20,000 - 30,000

The gilt bronze sculpture of the chariot of Apollo or Phaëton at the summit of this regulator clock is based on a model signed by Philippe Caffieri (1714-1774) from 1767, in the Frick Collection, New York. The design of the Frick clock case, which differs significantly from the present work, was by Balthazar Lieutaud (d. 1780), and the movement by Ferdinand Berthoud (1727-1807).

Literature:

Theodore Dell, *French Furniture in the Frick Collection*, Vol. V, The Frick Collection, 1992, pp. 314-332



160



161



162



163



164



165

161

A REGENCY BRASS INLAID EXOTIC WOOD DROP LEAF TABLE

height 29 1/2in (75cm); width closed 31 1/2in (80cm); width open 45in (114cm); depth 23in (59cm)

\$1,500 - 2,000

162

A PAIR OF CHINOISERIE DECORATED BRONZE VASES

Possibly English, late 19th/early 20th century

height 26 1/2in (47cm)

\$2,000 - 3,000

163

J. CLARK (BRITISH, 19TH CENTURY)

The peach seller

signed 'J. Clark' (lower left)

oil on canvas

16 1/4 x 12 1/4in (41.3 x 31.2cm)

\$1,000 - 1,500

164

A REGENCY LEATHER INSET MAHOGANY DRUM TABLE

height 29in (74cm); diameter 38in (97cm)

\$1,500 - 2,000

165^w

AN EDWARDIAN PAINTED AND CANED SETTEE

Early 20th century

height 34in (86cm); width 73in (185cm); depth 31in (78cm)

\$1,000 - 1,500



166



167

166^w

A GEORGE III STYLE CHINOISERIE DECORATED CABINET

height 80 1/4in (204cm); width 44in (109cm); depth 23in (59cm)

\$2,000 - 3,000

167

A REGENCY STYLE BRASS MOUNTED MAHOGANY DUMBWAITER

height 43 1/2in (110cm); diameter 29in (73cm)

\$800 - 1,200



168

168
A SET OF SIX REGENCY PAINTED AND CANED DINING CHAIRS

19th century
height 33in (83cm); width 18in (45cm); depth 21in (53cm)

\$800 - 1,200



169

169
ENGLISH SCHOOL (19TH CENTURY)

Full cry
oil on canvas
19 x 25in (48.3 x 63.5cm)

\$800 - 1,200



170

170
AN EDWARDIAN MAHOGANY BAR CABINET

Early 20th century
*Together with a pair of decanters and six glasses.
height 29in (73cm); width open 54in (137cm); depth 24 1/2in (62cm)*

\$1,000 - 1,500



171

171
A GEORGE III INLAID MAHOGANY TABLE

Early 19th century
height 29in (74cm); width 47 3/4in (121cm) square

\$800 - 1,200



172



173



174



175

172^w

A GEORGE III MAHOGANY INLAID SIDEBOARD

Early 19th century
height 36in (91cm); width 72in (183cm); depth 27 1/4in (69cm)

\$1,000 - 1,500

173^w

A REGENCY STYLE MAHOGANY EXTENSION DINING TABLE WITH FIVE EXTERNAL LEAVES

height 29 1/2in (75cm); diameter extended 89in (226cm)

\$2,000 - 3,000

174

A REGENCY SATINWOOD BANDED SOFA TABLE

Early 19th century
height 29in (74cm); width closed 36 1/2in (91cm); depth 25 1/2in (64cm)

\$1,000 - 1,500

175^w

AN EDWARDIAN PAINTED SATINWOOD AND CANED SETTEE

height 39in (99cm); width 76 1/2in (194cm); depth 27 1/2in (70cm)

\$800 - 1,200



176



177



178



179

176^w

MANNER OF CLAUDE JOSEPH VERNET

An active Mediterranean port
oil on canvas
40 x 50 1/4in (101.6 x 127.6cm)

\$4,000 - 6,000

177

A WILLIAM IV CARVED MAHOGANY CELLARETTE

height 21 1/2in (55cm); width 27 3/4in (71cm); depth 21 2/4in (55cm)

\$1,500 - 2,000

178^w

A LOUIS XVI MARBLE TOP GILT BRONZE MOUNTED MAHOGANY COMMODE

Late 18th century
height 36in (92cm); width 50in (127cm); depth 23in (58cm)

\$1,500 - 2,000

179

E. MEYER (20TH CENTURY)

Fishing off a bridge
signed 'E. Meyer' (lower right)
oil on canvas
23 3/4 x 17 7/8in (60.3 x 45.4cm)

\$600 - 800



180

180
A SET OF FOUR LOUIS XV STYLE GILT BRONZE FIVE-LIGHT SCONCES

height 26 1/2in (67cm); width 15in (38cm); depth 15in (38cm)

\$8,000 - 12,000

181
A LOUIS XVI STYLE GILT AND PATINATED BRONZE AND MARBLE FIGURAL CLOCK
 Late 19th century
 The dial signed *Deniere, Ft. Bronzes, A Paris* and the works stamped *Deniere A Paris*.
height 18 1/4in (46.5cm); width 20in (51cm); depth 14in (36cm)

\$3,000 - 5,000



181



182



183



184



185



186



187



182

A TRANSITIONAL LOUIS XV/XVI STYLE KINGWOOD BUREAU DE DAME
height closed 29in (74cm); width 27 3/4in (70cm); depth 16in (41cm)

\$1,000 - 1,500

183

A LOUIS XVI STYLE MARBLE TOP GILT METAL MOUNTED MAHOGANY VITRINE
height 43 1/2in (110cm); width 49in (125cm); depth 18 1/2in (47cm)

\$2,000 - 3,000

184

A GILT BRONZE MOUNTED SÈVRES STYLE PORCELAIN BOX
Porcelain signed L. Penel Sevres.
height 7 3/4in (19.5cm); width 10 3/4in (27.5cm); depth 8in (20.5cm)

\$2,000 - 3,000

185

A SÈVRES STYLE GILT METAL MOUNTED PORCELAIN CENTERPIECE
Late 19th/early 20th century
height 11in (28cm); width 18in (46cm)

\$800 - 1,200

186

A SET OF FOUR NEOCLASSICAL STYLE GILT BRONZE TWO-LIGHT SCONCES
19th century
Stamped on the reverse CA.
height 20in (51cm); width 12 1/2in (52cm)

\$2,000 - 3,000

187^w

A PAIR OF LOUIS XVI STYLE GILT BRONZE AND FROSTED GLASS LANTERNS
height 53in (135cm); diameter 29in (74cm)

\$7,000 - 9,000

188

AN ITALIAN ROCOCO STYLE CHINOISERIE DECORATED MIRROR MOUNTED COMMODE
height 35 1/2in (90cm); width 47 1/2in (121cm); depth 22 3/4in (58cm)

\$3,000 - 5,000



188



189

189

A PAIR OF ITALIAN GRAND TOUR STYLE SPECIMEN MARBLE OBELISKS

height 40 1/2in (103cm); width 9in (23cm) square

\$2,000 - 3,000

190^w

A NEOCLASSICAL STYLE MARBLE GARDEN BENCH

height 44 1/2in (113cm); width 65in (166cm); depth 27in (69cm)

\$3,000 - 5,000

191

A SET OF FOUR NEOCLASSICAL STYLE GRANITE GARDEN URNS

height 17in (43cm); diameter 19in (48cm)

\$3,000 - 5,000



190



191

192

A PAIR OF GRANITE GARDEN ORBS

height 21in (53cm); diameter 18in (56cm)

\$1,500 - 2,000



192



193

193

TWO SOUTHEAST ASIAN FIGURES ON IRON STANDS

overall height of taller figure 38in (97cm); height of stand 23 3/4in (60cm) square

\$2,000 - 3,000

194

A PAIR OF MARBLE GARDEN CHAIRS

height 29 1/2in (75cm); width 27in (69cm); depth 27 1/2in (75cm)

\$4,000 - 6,000



194



195



196



197



198

195

A PAIR OF GARDEN ORBS

height 21in (53cm); diameter 18in (56cm)

\$1,500 - 2,000

196^w

A CAST IRON FIGURE OF A BULL

height 34 1/2in (88cm); width 69in (175cm); depth 17in (43cm)

\$1,500 - 2,000

197

A CARVED MARBLE LION FOUNTAINHEAD

Has drilled hole.

height 17in (43cm); width 14in (36cm)

\$400 - 600

198

A PAIR OF GRANITE GARDEN FINIALS

height 20 1/2in (72cm)

\$2,000 - 3,000

199^w

A PAIR OF MARBLE GARDEN OBELISKS

height 79in (201cm); width 19 1/2in (50cm) square

\$2,000 - 3,000



199



200

200^w

A PAIR OF NEOCLASSICAL STYLE IRON GATES

height 108in (274cm); width of each panel 79in (200cm)

\$3,000 - 5,000

201

A SET OF FOUR SPANISH IRON JARDINIÈRES

height 38 1/2in (98cm); width 34in (87cm); depth 23 1/2in (60cm)

\$1,200 - 1,800



201



202

202

A PAIR OF NEOCLASSICAL STYLE MARBLE JARDINIÈRES

Early 19th century

height 28 1/2in (72cm); width 33in (84cm); depth 13 1/2in (34cm)

\$3,000 - 5,000

203^w

A PAIR OF FRENCH STYLE PAINTED IRON GATES

height 112in (284cm); width of each panel 78in (198cm)

\$3,000 - 5,000



203



204

204

A CARVED MARBLE LION FOUNTAINHEAD

Not drilled.

height 20in (51cm); width 17in (42cm)

\$600 - 800



205

205^w

AN ITALIAN BAROQUE STYLE MARBLE FOUNTAIN

Fourth quarter 19th century

height 96in (244cm); diameter 54in (137cm)

\$12,000 - 18,000



206



206

A PAIR OF CAST IRON STREET LIGHTS ON FAUX MARBLE BASES

height approximately 10ft 2in (3.10m)

\$4,000 - 6,000

207^w

A WHITE PAINTED CAST IRON GAZEBO

height excluding finial 156in (396cm); diameter approximately 117in (296cm)

\$7,000 - 9,000



207

208^w

AN ITALIAN NEOCLASSICAL CARVED MARBLE FOUNTAIN

19th century

height 76in (193cm); width 44in (111cm); depth 22in (56cm)

\$4,000 - 6,000



208



209

209

A PAIR OF NEOCLASSICAL STYLE MARBLE URNS

height 31in (78cm); width 21in (51cm)

\$3,000 - 5,000

210^w

A NEOCLASSICAL STYLE MULTICOLOR MARBLE FIREPLACE SURROUND

height 43 1/4in (11cm); width 59in (150cm); depth 13in (33cm)

\$1,500 - 2,000



210



211



212



213



214

211
**A PAIR OF EMPIRE STYLE GILT AND PATINATED BRONZE
EIGHT-LIGHT CANDELABRA**
height 32 1/2in (82cm)

\$800 - 1,200

212^w
**A CONTINENTAL NEOCLASSICAL STYLE PARCEL GILT
BURLWOOD VITRINE**
height 43in (109cm); width 71in (180cm); depth 18 1/2in (74cm)

\$1,200 - 1,800

213^w
**AN EMPIRE STYLE GILT BRONZE MOUNTED MAHOGANY
SETTEE**
19th century
height 41in (104cm); width 54in (137cm); depth 21 1/2in (55cm)

\$800 - 1,200

214
RUDOLPH ANDRIZ (DUTCH, 19TH/20TH CENTURY)
Awaiting the return
signed 'R. Andriz' (lower left)
oil on canvas
18 1/2 x 40in (47 x 101.6cm)

\$2,000 - 3,000



215



216



217



218

215
A PAIR OF BIEDERMEIER PARTIAL GILT AND EBONIZED WALNUT CABINETS
height 67in (170cm); width 38 3/4in (98cm); depth 21in (54cm)

\$3,000 - 5,000

216
A PAIR OF RUSSIAN NEOCLASSICAL STYLE MAHOGANY OPEN ARMCHAIRS
height 34 1/2in (87cm); width 20in (51cm); depth 21in (53cm)

\$1,000 - 1,500

217^w
AN EMPIRE STYLE LEATHER INSET GILT BRONZE MOUNTED MAHOGANY LIBRARY TABLE
height 29 3/4in (76cm); diameter 59in (150cm)

\$4,000 - 6,000

218
AN ITALIAN GILT BRONZE GROUP: LE CONCERT DES ENFANTS
 Francesco De Matteis (1852-1917)
 On a marble base.
height overall 15in (38cm); width 40in (102cm); depth 10 1/2in (27cm)

\$1,000 - 1,500



219

219^w

A PAIR OF LOUIS XVI STYLE GILTWOOD AND COMPOSITION MIRRORS

height 77in (196cm); width 51in (130cm)

\$4,000 - 6,000

220

A SET OF FOUR LOUIS XV STYLE GILT BRONZE AND PORCELAIN THREE-LIGHT SCONCES

height 31in (79cm); width 16in (41cm)

\$2,000 - 3,000



220



221

221

A PAIR OF LOUIS XVI STYLE GILT BRONZE MOUNTED MARBLE COVERED URNS

height 19in (48.5cm)

\$2,000 - 3,000



222



223

222

A LOUIS XV STYLE GILT BRONZE THREE PIECE CLOCK GARNITURE

The dial signed *Deniere, Fr De Bronzes a Paris*.
height of clock 21 1/4in (53.5cm); width 21in (54cm); height of
candelabra 26in (56cm)

\$6,000 - 8,000

223^w

A PAIR OF LOUIS XV STYLE GILT BRONZE MOUNTED VITRINES

height 71in (180cm); width 41in (104cm); depth 17in (43cm)

\$8,000 - 12,000



224



225



226



227



228



229

224

A LOUIS XVI STYLE GILTWOOD CHAISE LONGUE

length 68in (174cm)

\$600 - 800

225

A PAIR OF LOUIS XVI STYLE CLOISONNÉ AND PATINATED BRONZE FIVE-LIGHT SCONCES

height 41in (104cm); width 26in (56cm)

\$1,200 - 1,800

226

A PAIR OF LOUIS XVI STYLE GILT BRONZE CHENETS

height 18in (46cm); width 16in (41cm); width 5in (12.2cm)

\$1,000 - 1,500

227

A SÈVRES STYLE PORCELAIN AND GILT METAL AND BRONZE THREE PIECE CLOCK GARNITURE

Second half 19th century

The works stamped *Medaille D'Argent Vincenti & Cie, 1855. Made in France.*

height of clock 18in (45cm)

\$800 - 1,200

228

A PAIR OF TRANSITIONAL LOUIS XV/XVI MARBLE TOP GILT BRONZE MOUNTED MAHOGANY TABLES

height 28in (71cm); diameter 24in (61cm)

\$2,000 - 3,000

229

A TRANSITIONAL LOUIS XV/XVI STYLE MARBLE TOP GILT BRONZE MOUNTED MAHOGANY CENTER TABLE

height 30in (76cm); diameter 40in (102cm)

\$1,200 - 1,800



230

A LOUIS XVI STYLE GILT BRONZE MOUNTED PORPHYRY AND LAPIS MANTEL CLOCK

The works stamped *Paillard a Paris.*

height 27in (69cm); width 16 1/2in (42cm); depth 11 1/2in (29cm)

\$12,000 - 18,000

231

A LOUIS XV STYLE MARBLE TOP GILT BRONZE MOUNTED MAHOGANY LOW TABLE

height 21in (53cm); width 46in (117cm); depth 26in (66cm)

\$1,000 - 1,500



232



233



234



235



236



237

232

A GILT METAL AND SEMI PRECIOUS STONE MOUNTED ROCK CRYSTAL COVERED URN

height 13 1/2in (33cm)

\$1,200 - 1,800

233

A PAIR OF LEVANTINE STYLE BONE AND SHELL INLAID SIDE TABLES

height 17 1/2in (44cm); width 19 1/2in (49.5cm) square

\$1,500 - 2,000

234

A PAIR OF CHINESE FAMILLE ROSE PORCELAIN VASES

height 22 1/2in (57cm)

\$800 - 1,200

235

A LARGE VIENNA STYLE COLD PAINTED BRONZE NUDE

Signed.

length 28in (72cm)

\$2,000 - 3,000

236

A PAIR OF CHINOISERIE DECORATED FIGURES OF ASIAN ELEPHANTS

height 22in (56cm); width 21 1/2in (54cm); depth 8in (20cm)

\$1,200 - 1,800

237

A SPANISH BAROQUE FAUX SCAGLIOLA TOP WALNUT REFECTORY TABLE

18th century and later

height 30 1/2in (77.5cm); width 91in (231cm); depth 39in (71cm)

\$1,200 - 1,800



238

238

A PAIR OF CHINESE IRON MOUNTED PORCELAIN COVERED TEA JARS

height 24in (61cm)

\$1,500 - 2,000

239^w

A PAIR OF LEVANTINE BONE AND SHELL INLAID PART EBONIZED COMMDES

height 34in (86cm); width 46in (116cm); depth 19in (48cm)

\$6,000 - 8,000



239



240

240^w

A JAPANESE GILT AND LACQUERED CABINET ON STAND

height overall 73in (186cm); width 39in (99cm); depth 19in (48cm)

\$4,000 - 6,000

241^w

A PAIR OF LEVANTINE SHELL INLAID HARDWOOD MIRRORS

height 69in (175cm); width 38in (97cm)

\$5,000 - 7,000



241





242

A PAIR OF CHINESE LAPIS VENEERED COVERED URNS ON STANDS

height 47in (119cm)

\$3,000 - 5,000

243^w

A FRENCH STYLE PARCEL GILT AND MARQUETRY CENTER TABLE

height 32in (81cm); diameter 61in (154cm)

\$2,000 - 3,000



243



244

A PAIR OF LOUIS XVI STYLE GILT BRONZE MOUNTED MARBLE COVERED URNS

height 27in (69cm); width 14 1/2in (37cm)

\$3,000 - 5,000



245

245

A ROMAN STYLE CARVED MARBLE TORSO ON A MARBLE PEDESTAL

After the Antique

height overall 47in (120cm)

\$5,000 - 7,000

246

A PAIR OF NEOCLASSICAL STYLE GILT BRONZE MOUNTED MARBLE COVERED URNS

height 12 3/4 in (32cm); width 10 1/2in (27cm)

\$3,000 - 5,000



246

247^w

A PAIR OF BALTIC NEOCLASSICAL MARBLE TOP GILT METAL MOUNTED PART EBONIZED COMMODES

height 35 1/2in (90cm); 48 1/4in (122cm); 23 1/3in (59cm)

\$4,000 - 6,000



247



248

248
**A PAIR OF BAGUÈS STYLE ROCK CRYSTAL AND SILVERED
 WOOD TWO-LIGHT SCONCES**
height 32in (81cm); width 30in (76cm)

\$3,000 - 5,000



249

249
**AN EMPIRE STYLE PIETRA DURA TOP FAUX TORTOISESHELL,
 GILT, AND PAINTED WOOD CENTER TABLE**
height 32 1/4in (82cm); diameter 45in (114cm)

\$3,000 - 5,000



250

250
A PAIR OF BRONZE FIGURES OF CLASSICAL MAIDENS
*Stamped Paillard a Paris.
 height 41in (104cm)*

\$4,000 - 6,000



251



252



253



254



255



256



257

251

L. LAURENTY (FRENCH, 19TH/20TH CENTURY)

The day's catch

signed 'L. Laurenty' (lower right)

oil on canvas

25 1/2 x 21 1/2in (64.8 x 54.7cm)

\$1,000 - 1,500

252

A ROMAN STYLE CARVED MARBLE FIGURE OF APOLLO BELVEDERE ON A GILTWOOD BASE

After the Antique

height 27in (69cm)

\$1,000 - 1,500

253

A PAIR OF NEOCLASSICAL GILT BRONZE AND GLASS NINE-LIGHT SCONCES

height 37 1/2in (95cm)

\$1,200 - 1,800

254

A PAIR OF CAMEO MOUNTED MALACHITE VASES

height 21 1/2in (24cm)

\$2,000 - 3,000

255

A NEOCLASSICAL STYLE GILT AND PAINTED BRONZE CLOCK WITH FIGURE OF CUPID

19th century

height 16 1/2in (41cm); width 12 1/2in (31cm)

\$1,200 - 1,800

256

A GERMAN PORCELAIN PLAQUE

Signed Schmidt E and impressed KPM.

height 13in (33cm); width 8 1/4in (31cm)

\$1,200 - 1,800

257

A NEOCLASSICAL STYLE GILT BRONZE AND GLASS CENTERPIECE

height 8 3/4in (22.5cm); width 23 1/2in (60cm); depth 11in (28cm)

\$2,000 - 3,000

258^w

A NEOCLASSICAL CARVED MARBLE FIREPLACE

height 59in (149cm); width 76in (193cm); depth 13 1/2in (33cm)

\$2,000 - 3,000



258



259



260



261



262

259

CONTINENTAL SCHOOL (19TH/20TH CENTURY)

Village scenes (three in an integrated frame)

all oil on canvas

each 35 1/2 x 13 3/4in (90.2 x 35cm)

\$1,500 - 2,000

260

A PAIR OF NEOCLASSICAL STYLE MARBLE PEDESTALS

height 42in (107cm); width 13 1/4in (44cm) square

\$2,000 - 3,000

261

A PAIR OF PATINATED BRONZE FIGURES OF COURTIERS

After Paul Duboy (1830-1887), late 19th century

Signed *P. Duboy*.

height of figures 34in (87cm)

\$2,500 - 3,500

262

A PAIR OF ROCK CRYSTAL OBELISKS

height 21 1/2in (55cm)

\$2,000 - 3,000

263

A RUSSIAN STYLE CAMEO MOUNTED MALACHITE BOX ON STAND

height overall 37 1/2in (95cm); width 17 1/2in (45cm); depth 12 1/2in (30cm)

\$4,000 - 6,000

264

A LEVANTINE SHELL AND BONE INLAID HARDWOOD CHEST WITH BRONZE MOUNTS

height 27in (68cm); width 46 3/4in (116cm); depth 22 3/4in (55cm)

\$2,500 - 3,500

265

G. GUILLOR (20TH CENTURY)

A still life with a Japanese figurine, a fan and spring blossoms in a vase
signed 'G. Guillon' (lower right)

oil on canvas

25 3/4 x 21 1/4in (65.4 x 54cm)

\$1,000 - 1,500



263



264



265



266

266
A PAIR OF EMPIRE GILT AND PATINATED BRONZE AND MARBLE THREE-LIGHT CANDELABRA
height 23 1/2in (60cm)

\$1,200 - 1,800

267
A PAIR OF CHARLES X GILT BRONZE AND GLASS CANDLESTICKS
height 11 1/2in (29cm)

\$800 - 1,200

268
A NAPOLEON III GILT BRONZE AND MARBLE DESK SET
After Albert Marionnett (1852-1910), late 19th century
Comprising a letter rack, pen tray and inkwell, each stamped A.
Marionnett bronzes Paris, France Depose.
height of inkwell 11 1/2in (29cm); width 17 1/4in (44cm); depth 9 1/2in (24cm)

\$600 - 800

269
A CONTINENTAL PAINTED TILT TOP TABLE
19th century
height 29 1/2in (74cm); diameter 23 1/4in (59cm)

\$600 - 800

270
A FRENCH PATINATED BRONZE OF A FISHERMAN WITH ORPHEUS IN HIS NET
Louis Eugène Longepied (French, 1849-1888)
Signed *L. Longepied* in the maquette.
height 32 1/8 (81cm)

\$1,000 - 1,500

271
A PAIR OF CHINESE SANG DE BOEUF PORCELAIN VASES
height 21in (53cm)

\$800 - 1,200

272^w
A BIEDERMEIER BURLWOOD CORNER CABINET
height 86in (219cm); width 38in (97cm); depth 27in (69cm)

\$600 - 800

273
ANTAL BERKES (HUNGARIAN, 1874-1938)
A busy street scene
signed 'Berkas A.' (lower left)
oil on canvas
21 1/2 x 26 1/2in (54.6 x 67.3cm)

\$2,000 - 3,000



267



268



269



270



271



272



273



274

274^w

A PAIR OF NAPOLEON III STYLE GILTWOOD AND COMPOSITION MIRRORS

height 61in (155cm); width 52in (132cm)

\$2,000 - 3,000

275

AN EMPIRE STYLE GILT BRONZE AND MIRRORED TABLE PLATEAU

height 11in (28cm); diameter 34in (87cm)

\$2,000 - 3,000



275



276

276^w

A NAPOLEON III MARBLE TOP GILT WOOD CONSOLE

height 31in (79cm); width 51in (130cm); depth 22in (56cm)

\$2,000 - 3,000

277

**AN EMPIRE STYLE GILT AND PATINATED BRONZE THREE
PIECE CLOCK GARNITURE**

Late 19th century

The clock signed *Leroy a Paris*.

height of clock 44in (102cm); width 22 3/4in (58cm); depth 7 1/2in (19cm)

\$8,000 - 12,000



277



278

278

**A SÈVRES NAPOLEONIC STYLE GILT AND POLYCHROMED
PORCELAIN COFFEE SERVICE**

19th century

Decorated with Napoleonic scenes, comprising a coffee pot, covered sugar, creamer, twelve dessert plates and twelve coffee cans and saucers, scene signed *F. Aniblel (?)*, inscribed *Mre Imple de Sèvres* with battle names in overglaze red.

height of coffee pot 6 3/4in (17cm)

\$1,500 - 2,000

279

**A NEOCLASSICAL STYLE MALACHITE AND ONYX TOP
PAINTED AND PARCEL GILTWOOD GAMES TABLE**

With a set of malachite and onyx chess pieces.

height 29in (73cm); 27 1/4in (69cm) square

\$3,000 - 5,000



279



280

280

A PAIR OF FRENCH GILT METAL, ROCK CRYSTAL, AND AMETHYST FIVE-LIGHT SCONCES

height 32in (82cm); width 24in (61cm); depth 16in (41cm)

\$1,500 - 2,000

281^w

EDUARD HUBER-ANDORF (GERMAN, 1877-1965)

An elaborate still life of fruit and a lobster on a draped table signed, inscribed and dated 'Ed. Huber. 1909. / München.' (lower left) oil on canvas

37 1/4 x 55 1/4in (94.6 x 140.4cm)

\$2,000 - 3,000



281



282

282

A PAIR OF EMPIRE STYLE GILT AND PATINATED BRONZE CHENETS

19th century

height 16in (41cm); width 13in (33cm); depth 5in (13cm)

\$1,500 - 2,000

283

A PAIR OF NEOCLASSICAL STYLE GILT AND PATINATED BRONZE THREE-LIGHT FIGURAL CANDELABRA

height 36in (91cm)

\$3,000 - 5,000



283



284

284

A NAPOLEON III GILT BRONZE AND MARBLE MANTEL CLOCK

Second half 19th century

The movement stamped *Freres. CRC Crookshank.*

height 30in (76cm); width 8 1/2in (21.5cm)

\$3,000 - 5,000

285

A PAIR OF NAPOLEON III MARBLE TOP GILTWOOD CONSOLES

Third quarter 19th century

Marked *MAISON LEMARCHAND, A. LEMOINE, Rue des Tournelles. 17. A PARIS.*

height 40in (102cm); width 27in (69cm); depth 20in (51cm)

\$3,000 - 5,000



285



286



287



288



289



290



291



292

286

DOMINGO F. PERICONI (AMERICAN, 1883-1940)

A bugler seated by a fire with troops beyond
signed and dated 'DFPericoni / 04' (lower right)
oil on canvas
12 x 18in (30.5 x 45.8cm)

\$800 - 1,200

287

A PATINATED BRONZE FIGURAL GROUP OF AN AMOROUS COUPLE

After Etienne-Henri Dumaige (1830 - 1888)
Signed *Henri Dumaige* and stamped *Paris*.
height 25in (63.5cm)

\$1,500 - 2,000



294



293



288

A TERRACOTTA STYLE FIGURAL GROUP OF BACCHANTES

On a faux malachite base.
height overall 33 1/2in (85cm)

\$800 - 1,200

289

AN EMPIRE STYLE MARBLE TOP GILT METAL MOUNTED MAHOGANY SIDE TABLE

height 29 1/2in (75cm); width 23 1/2in (60cm); depth 15in (38cm)

\$700 - 900

290

A NAPOLEON III BRASS INLAID EBONIZED TRAVEL DESK

height 9in (23cm); width 24in (61cm); depth 16in (41cm)

\$500 - 700

291

A PAIR OF EMPIRE STYLE GILT BRONZE MOUNTED MARBLE COVERED URNS

height 18 1/4in (47cm)

\$600 - 800

292

A NEOCLASSICAL STYLE MARBLE, GILT, AND PATINATED BRONZE MANTEL CLOCK

height 16in (41cm)

\$1,000 - 1,500

293

WITMAN ETELKA VIZKELETI (HUNGARIAN, 1882-1962)

A couple in a market courtyard; A musical trio (a pair)
the first signed '-Vizkeleti W E-' (lower left); the second signed
'-Vizkeleti W E-' (lower right)
both oil on canvas
each 21 1/2 x 15in (54.6 x 38.1cm)

\$1,500 - 2,000

294

A CHINESE BLUE AND WHITE GLAZED PORCELAIN MOON FLASK

height 18 1/2in (47cm)

\$800 - 1,200



295

295

J. CLAUDE DURAND (19TH CENTURY)

A cottage with cows in a rural landscape
signed and dated 'J. Claude Durand. / 1886' (lower left)
oil on canvas
50 x 30in (127 x 76.2cm)

\$800 - 1,200



296

296^w

A PAIR OF CONTINENTAL PARCEL GILT AND CARVED WALNUT CABINETS

Late 19th century
height 64 1/2in (164 cm); width 37 1/2in (95cm); depth 20in (51cm)

\$3,000 - 5,000



297



297

A GROUP OF THREE GERMAN PORCELAIN PLAQUES

Comprising a portrait of a Lady as a Vestal Virgin, after Angelica Kauffman (1741-1807), a portrait of a woman with a candle, and a woman with a fan.
height of largest 15 3/4in (40cm); width 10 1/4in (36cm)

\$1,500 - 2,000



298

298

A PARCEL GILT AND PATINATED BRONZE GROUP OF A MAIDEN WITH A PUTTO

On a marble base and a faux marble painted pedestal.
height of bronze 32in (81cm); height of pedestal 37 1/2in (95cm)

\$2,500 - 3,500

299

FRANCIS SYDNEY MUSCHAMP (BRITISH, 1851-1929)

The lullaby

signed 'Sydney Muschamp.' (lower left)

oil on canvas

21 x 17in (53.3 x 43.3cm)

\$1,500 - 2,000



299



300

300

A PAIR OF EMPIRE STYLE PORCELAIN MOUNTED GILT BRONZE FOUR-LIGHT CANDELABRA

height 23 1/2in (59.5cm)

\$2,000 - 3,000

301

A PAIR OF LOUIS XVI STYLE MALACHITE AND GILT BRONZE TABLES

height 29 1/2in (75cm); width 27 3/4in (71cm); depth 20in (51cm)

\$6,000 - 8,000



301



302



303



304

302

JACQUES WELY (FRENCH, 1873-1910)

Le règlement

signed 'J. Wely' (lower right)

oil on canvas

18 1/4 x 24in (46.4 x 61cm)

\$1,500 - 2,000

303^w

A FRENCH ROCOCO STYLE WHITE GLAZED CERAMIC OVEN

19th century

height 92 1/2in (235cm); width 36in (91cm); depth 17in (43cm)

\$1,000 - 1,500

304

A PAIR OF NAPOLEON III GILT BRONZE AND MARBLE NINE-LIGHT CANDELABRA

height 43 1/2in (110cm); width 18in (46cm); depth 18in (46cm)

\$7,000 - 9,000

305^w

A LOUIS XVI STYLE CORAMANDLE INSET AND GILT BRONZE CONSOLE DESSERT

height 38in (97cm); width 51 1/4in (130cm); depth 19 1/4in (49cm)

\$3,000 - 5,000



305



306

306

A PAIR OF CARVED MARBLE ALLEGORICAL FIGURES

Each on a brass ring base.

height overall 41in (104cm)

\$5,000 - 7,000

307^w

A PAIR OF LOUIS XVI STYLE MARBLE TOP PORCELAIN INSET AND GILT BRONZE MOUNTED KINGWOOD AND MAHOGANY CABINETS

Late 19th century

height 33in (109cm); width 79in (200cm); depth 14 1/2in (37cm)

\$7,000 - 9,000



307



308

A PAIR OF BAGUÈS STYLE WROUGHT METAL AND ROCK CRYSTAL TWO-LIGHT SCONCES

height 26in (66cm); width 19 1/2in (49.5cm); depth 6 1/2in (16.5cm)

\$2,000 - 3,000

309

FRANS ROOFTHOFT (BELGIAN, 1888-1957)

A floral still life

signed 'F. ROOFTHOFT' (lower left)

oil on canvas

27 3/4 x 27 3/4in (70.5 x 70.5cm)

\$1,000 - 1,500



309



310

310

A PAIR OF TRANSITIONAL LOUIS XV/XVI STYLE GILT BRONZE MOUNTED MARQUETRY AND MAHOGANY PETITE COMMDES

height 32in (81cm); width 22 1/2in (57cm); depth 18 1/2in (47cm)

\$1,500 - 2,000

311

A PAIR OF NEOCLASSICAL STYLE MARBLE FIGURAL PEDESTALS

height 43 1/3in (111cm)

\$3,000 - 5,000



311



312

312^w

A CONTINENTAL PAINTED WOOD RELIGIOUS FIGURE

18th century

height 61in (155cm); width 46in (117cm); depth 22in (56cm)

\$1,200 - 1,800



313

313

A NEOCLASSICAL STYLE FAUX PAINTED TOP CARVED WALNUT CONSOLE

height 32in (81cm); width 47in (119cm); depth 22 1/2in (57cm)

\$1,200 - 1,800



314



315



316



317



318



319

314

A PAIR OF ROCK CRYSTAL TAZZAS

height 9 1/8in (23cm); diameter 5 1/2in (14cm)

\$1,000 - 1,500

315

A GILT DECORATED MARBLE SHELL FORM CENTERPIECE

On a giltwood base.

overall height 11 1/2in (29cm); width 39in (99cm); depth 17 1/2in (45cm)

\$1,200 - 1,800

316

A PAIR OF CHARLES X STYLE GILT AND PATINATED BRONZE SIX-LIGHT SCONCES

height 20in (51cm)

\$600 - 800

317

A PAIR OF CHINESE POLYCHROME ENAMELED PORCELAIN VASES

height 18in (46cm)

\$1,000 - 1,500

318

A GILT BRONZE FIGURE OF VICTORY

After Paul Marie Ducuing (1867 - 1949)

Engraved for presentation; signed *Ducuing* and marked *F. Barbedienne Fondateur*.

height 26 3/4in (68cm)

\$800 - 1,000

319

A CHINESE CARVED CINNABAR LACQUERED BOX

diameter 21 1/2in (65cm)

\$1,000 - 1,500

320

A PAIR OF CHINESE ROSE MEDALLION PORCELAIN FLOOR VASES ON GILTWOOD STANDS

19th century

height 39 1/2in (100cm)

\$6,000 - 8,000



320



321



322



323



324



325



326

321

**A GROUP OF ONE HUNDRED AND TWENTY CARVED
HARDSTONE AND SEMI PRECIOUS STONE EGGS**

height of each 2 3/4in (7cm)

\$4,000 - 6,000

322

**A PAIR OF LEVANTINE STYLE BONE AND SHELL INLAID
TABLES**

height 28 1/2in (72cm); diameter 28 1/2in (52cm)

\$1,200 - 1,800

323

**A PAIR OF CHINESE SILVER, ENAMEL, AND GILT METAL
VASES**

height 6 3/4in (17cm)

\$800 - 1,200

324

**A CHINESE CARVED STONE INLAID CARVED HARDWOOD
TABLE SCREEN**

height 24in (61cm); width 32in (81cm); depth 5in (13cm)

\$500 - 700

325

**A PAIR OF CHINESE GILT DECORATED COBALT BLUE
PORCELAIN VASES**

height 17in (43cm)

\$700 - 900

326

A JAPANESE GOLD LACQUERED TABLE BOX

Edo Period

height 3 1/2in (9cm); width 4 1/2in (12cm); depth 16 1/2in (42cm)

\$600 - 800



327



328

327^w

**A JAPANESE EXPORT SHELL INLAID LACQUERED CABINET
ON STAND**

Meiji period, 19th century

overall height 60in (152cm); width of stand 37in (93cm); depth 23in (58cm)

\$2,000 - 3,000

328

**A JAPANESE SHELL INSET AND CARVED LACQUERED TABLE
BOX**

Meiji Period

height 8in (20cm); width 13 1/2in (34cm); depth 17 1/2in (44cm)

\$1,500 - 2,000



329

329

A PAIR OF NEOCLASSICAL STYLE TÔLE JARDINIÈRES

height 11 1/2in (29cm); width 26 1/2in (17cm); depth 14 1/2in (37cm)

\$1,000 - 1,500

330

A PAIR OF NEOCLASSICAL STYLE GILT BRONZE MOUNTED MARBLE PEDESTALS

height 39 1/2in (100cm); 15 3/4in (40cm) square

\$3,000 - 5,000

331

A PATINATED BRONZE FIGURE OF DIANE OF GABII

After the Antique

height 20 1/2in (50cm)

\$800 - 1,200

332

A PAIR OF NEOCLASSICAL STYLE GILT AND PATINATED BRONZE AND METAL CHENETS

height 16in (41cm); width 14in (36cm)

\$800 - 1,200

333

A PAIR OF NEOCLASSICAL STYLE GILT BRONZE MOUNTED GLASS CAMPANA FORM VASES

height 30in (76cm); width 18in (46cm)

\$2,500 - 3,500

334

A PAIR OF EMPIRE GILT AND PATINATED BRONZE TWO-LIGHT FIGURAL CANDELABRA

19th century

height overall 16in (40cm)

\$2,500 - 3,500

335

A PAIR OF NEOCLASSICAL STYLE FLUTED MARBLE TAZZAS

height 11in (28cm); diameter 16in (41cm)

\$1,200 - 1,800

336

A CARVED MARBLE FIGURE OF PAULINE BORGHESE

After the model by Antonio Canova (Italian, 1757-1822)

Signed M. Passini.; on metal base.

overall height 19 3/4in (50cm); width 22 1/8in (56cm); depth 12in (31cm)

\$1,000 - 1,500



330



331



332



333



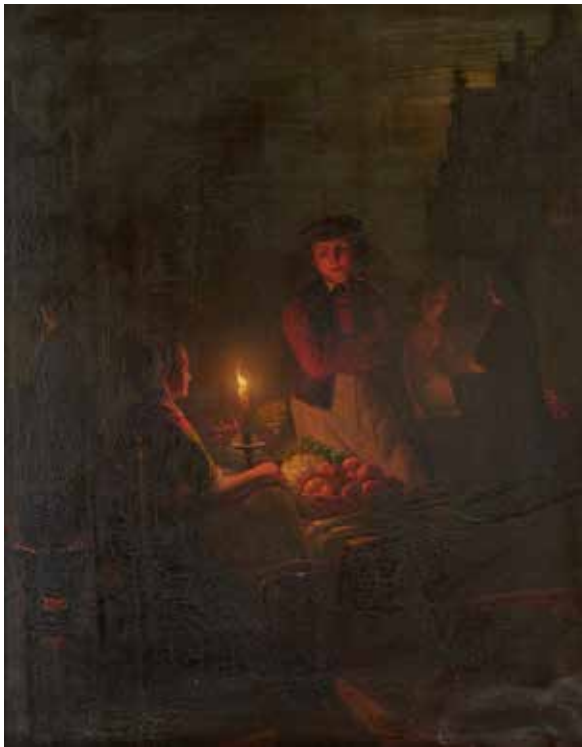
334



335



336



337

337

ANDREAS FRANCISCUS VERMEULEN (BELGIAN, 1821-1884)

A candlelit market scene

signed and dated 'Andreas Vermeulen. 73' (lower right)

oil on panel

19 x 15in (48.3 x 38.2cm)

\$2,500 - 3,500

338

A PAIR OF NAPOLEON III GILT AND PATINATED BRONZE, METAL, AND MARBLE FIGURAL SIX-LIGHT CANDELABRA

Late 19th century

height 32 1/2in (83cm)

\$2,500 - 3,500



338



339

339

A NEOCLASSICAL STYLE GILT AND PATINATED BRONZE THREE PIECE CLOCK GARNITURE

Late 19th century

The dial signed *Millo A Paris.*

height of candelabra 19in (48cm)

\$5,000 - 7,000



340

340^w

A PAIR OF NAPOLEON III STYLE GILT BRONZE MONTED MARBLE URNS

height 61in (154cm)

\$3,000 - 5,000

341

A PAIR OF NAPOLEON III MARBLE TOP BRASS AND SHELL INLAID EBONIZED CABINETS

height 50 1/2in (128cm); width 45 1/2in (114cm); depth 19in (48cm)

\$6,000 - 8,000



341





342



343



344



345

342
**A PAINTED TERRACOTTA BUST OF AN 18TH CENTURY
WOMAN ON A CARVED WOOD PEDESTAL**

height of bust is 28in (71cm); height of pedestal 38in (96cm)

\$1,200 - 1,800

343^w
**A FRENCH HARDSTONE, PORCELAIN AND TÔLE FIFTEEN-
LIGHT CHANDELIER**

height 57in (145cm); width 45in (115cm)

\$2,000 - 3,000

344
**A NAPOLEON III MARBLE TOP BRASS AND SHELL INLAID
CABINET**

height 45 1/2in (115cm); width 48 3/4in (124cm); depth 17 1/4in (44cm)

\$2,000 - 3,000

345
**A PAIR OF CHINESE GILT DECORATED AND RED PAINTED
DOUBLE GOURD FORM VASES ON GILT BRONZE STANDS**

height of vases 23 1/2in (60cm)

\$2,500 - 3,500



346

346
A GROUP OF SIX ROYAL VIENNA STYLE PORCELAIN PLATES
diameter of largest 10 1/4in (26cm)

\$500 - 700

347
A PAIR OF CHARLES X STYLE GILT BRONZE CANDLESTICKS AND A PAIR OF EMPIRE STYLE GILT BRONZE CANDLESTICKS
height 12in (30.5cm)

\$500 - 700



347

348
A VIENNA STYLE PORCELAIN TRAY DEPICTING KING EDWARD I OF ENGLAND
Early 20th century
Signed *Riemer* and titled.
length 14in (36cm)

\$400 - 600



348

349
A PAIR OF BAGUÈS STYLE GILT METAL AND GLASS FOUR-LIGHT SCONCES
height 17 1/2in (44.5cm); width 19in (48.5cm)

\$600 - 800



349

350
A PAIR OF LOUIS XVI STYLE GILTWOOD WINDOW BENCHES
height 32in (81cm); width 48in (142cm); depth 20in (51cm)

\$1,200 - 1,800



350



351

351

R. THORNTON (BRITISH, 19TH CENTURY)

Summer's day at Shelbourne
signed 'R. Thornton.' (lower left)
watercolor on paper
15 3/4 x 24in (40.1 x 61cm)

\$600 - 800

Provenance

Sale, Christie's East, New York, 19th Century Art, March 28, 2000, lot 165.

352

A BLACK FOREST STYLE CARVED WOOD SMOKING STAND

height 36 1/2in (93cm); width 20in (51cm); depth 16in (41cm)

\$800 - 1,200



352



354

353

A PAIR OF CHINESE FAMILLE VERTE PORCELAIN VASES

19th century
height 17 1/2in (44cm)

\$800 - 1,200

354

HENRY W. HENLEY (BRITISH, 1831-1931)

Cannock Chase near Penkridge
signed and dated 'H. W. Henley. 1880' (lower right); signed and
inscribed as titled (on the reverse)
oil on canvas
14 1/4 x 24in (36.3 x 61cm)

\$1,000 - 1,500



355



356



357



358

355

A PAIR OF NEOCLASSICAL STYLE GILT AND PAINTED WOOD LANTERNS

height 39 1/2in (100cm)

\$1,000 - 1,500

356

CARLO VALENSI (ITALIAN, LATE 19TH/EARLY 20TH CENTURY)

Playing with the cat
signed 'CValensi' (lower left)

oil on canvas

27 x 18 1/2in (68.6 x 47cm)

\$1,000 - 1,500

357^w

A NAPOLEON III PORCELAIN AND GILT BRONZE MOUNTED WALNUT BUREAU DE DAME

height 51in (129cm); width 28in (71cm); depth 16 1/2in (42cm)

\$800 - 1,200

358^w

A FRENCH MARBLE TOP IRON TABLE

height 31in (79cm); width 55in (140cm); depth 25in (64cm)

\$1,500 - 2,000



359



360



361



362

359^w

A CHINESE HARDSTONE, CHAMPLEVÉ, AND LACQUERED WOOD SCREEN ON A CARVED HARDWOOD STAND

height overall 65in (165cm); width 46 1/4in (108cm); depth 17 3/4in (45cm)

\$1,500 - 2,000

360

A PAIR OF EGYPTIAN REVIVAL STYLE BRONZE MOUNTED ONYX URNS ON MARBLE BASES

height overall 20 1/2in (52cm)

\$2,500 - 3,500

361^w

A PAIR OF EGYPTIAN REVIVAL STYLE INLAID AND PAINTED CABINETS

height 51 1/2in (131cm); width 25in (64cm); depth 15 1/4in (39cm)

\$4,000 - 6,000

362

A PAIR OF CHINESE CARVED STONE GARDEN SEATS

height 20in (50cm); width 17 1/2in (43cm) square

\$1,200 - 1,800



363



364



365



366

363^w

AN EMPIRE STYLE GILT BRONZE MOUNTED MAHOGANY PIER MIRROR

height 75 1/2in (172cm); width 56in (142cm)

\$1,200 - 1,800

364

CONTINENTAL SCHOOL (19TH/20TH CENTURY)

A still life with books, sheet music and violin on a desk
indistinctly signed (center right)

oil on panel

37 1/2 x 34in (95.3 x 86.4cm)

\$2,000 - 3,000

365

A NAPOLEON III PAINTED AND GILTWOOD PEDESTAL

height 39 3/4in (101cm); width 33 3/4in (86cm); depth 19in (48cm)

\$800 - 1,200

366

A PAIR OF CHINESE CLOISSONE OVER PORCELAIN VASES

height 16in (41cm)

\$1,200 - 1,800



367



368



369



370



371



372



373

371

STANLEY THOMPSON (BRITISH, BORN 1876)

The artist's wife Mary reading (The letter)
signed with initials and dated 'S T / -22' (lower left)
oil on canvas
24 x 18in (61 x 45.7cm)

\$1,200 - 1,800

Provenance:

Sale, Anderson and Garland, Newcastle upon Tyne, 15 September 1997, lot 809;
Waterhouse & Dodd, London, acquired from the above;
Private US collection, acquired from the above, October 1999.

372^w

A PAIR OF NEOCLASSICAL STYLE POLYCHROME AND GILT COLUMNS

height 107in (271cm)

\$1,000 - 1,500

373

A CONTINENTAL SEMI PRECIOUS STONE, ENAMEL, AND SILVER GILT EWER

Possibly Austrian
height 9in (23cm)

\$4,000 - 6,000

374

A PAIR OF LOUIS XVI STYLE MARBLE AND GILT BRONZE GUERIDONS

height 27 1/8in (69cm); diameter 20 1/2in (52cm)

\$4,000 - 6,000

367

A PAIR OF VIENNA STYLE PORCELAIN COVERED URNS

height 18in (46cm)

\$700 - 900

368

CONTINENTAL SCHOOL (EARLY 20TH CENTURY)

Awaiting her beloved
indistinctly signed 'Douglas Cu...N.A.' (lower right)
oil on canvas
28 x 16in (71.1 x 40.7cm)

\$1,000 - 1,500

369

A PAIR OF NEOCLASSICAL STYLE MARBLE TOP GILT BRONZE GUERIDONS

height 31 3/4in (80cm); width 17in (43cm)

\$1,500 - 2,000

370

A PATINATED BRONZE FIGURE OF BILBOQUET

After Andree Wegl (French, late 19th century)
Bearing tag inscribed *Bilboquet 200 Calembours 2 Sous* and inscribed *Andree Wegl Sculp P. Baur Fondateur and No. 5* in the maquette.
height 25 1/2in (65cm)

\$1,000 - 1,500



374



375

375

R. TURNER (20TH CENTURY)

A coastal outcrop with crashing waves
signed and dated 'RTurner. / 1907.' (lower left)
oil on canvas
34 1/4 x 63 3/4in (87 x 161.9cm)

\$3,000 - 5,000

376^w

**A PAIR OF NAPOLEON III MARBLE TOP BRONZE, METAL, AND
HARDSTONE MOUNTED EBONIZED CABINETS**

Late 19th/early 20th century
height 49in (124cm); width 41 1/4in (104cm); depth 18 1/4in (46cm)

\$8,000 - 12,000



376

377

AN IMPRESSIVE EMPIRE GILT BRONZE AND GLASS MANTEL CLOCK

height 45in (114cm); width 31 1/2in (80cm); depth 7in (18cm)

\$5,000 - 7,000

378

A PAIR OF CHARLES X STYLE GILT AND PATINATED BRONZE AND MARBLE FIVE-LIGHT CANDELABRA

height 24in (60cm)

\$1,000 - 1,500

379

A CONTINENTAL FAUX MARBLE TOP GILTWOOD CONSOLE

19th century

height 39in (99cm); width 39 1/2in (100cm); depth 17 1/2in (45cm)

\$1,000 - 1,500



377



378



379



380



381



382



383



384



385

380^w

WILLIAM CALLCOTT KNELL (BRITISH, 1830-1876)

Fishermen on rough seas near the shore
signed 'W Knell' (lower left)
oil on canvas
32 x 52in (81.3 x 132.1cm)

\$2,000 - 3,000

381

JOHN LINNELL (BRITISH, 1792-1882)

Ford on the Stour
signed 'J. Linnell' (lower left)
oil on canvas
22 1/4 x 32 1/2in (56.5 x 82.6cm)

\$1,000 - 1,500

382

A GROUP OF THREE CANES

Comprising one with a box handle, two with necessaire handles.
length of longest 36in (90.2cm)

\$600 - 800

383

A GROUP OF THREE CANES

Comprising two with whistles and one with a bulldog.
height of tallest 38in (97cm)

\$600 - 800

384

A GROUP OF FOUR CANES

Each with a telescope.
length of longest 35 1/2in (90cm)

\$700 - 900

385

A GROUP OF FIVE CANES

Comprising three pipes, one hearing aide, and one lighter.
height of tallest 36 1/2in (63cm)

\$1,000 - 1,500



386



387



388



389



390

386
AN ENGLISH BRASS MOUNTED CANE WITH COMPASS

With Royal seal.
height 37in (90.7cm)

\$800 - 1,200

387
AN ENGLISH BRASS MOUNTED CANE WITH COMPASS

height 37in (93cm)

\$700 - 900

388
AN ENGLISH BRASS MOUNTED CANE WITH COMPASS

height 42in (106cm)

\$800 - 1,200

389
A GROUP OF FIVE CANES

Comprising three with rules and two with thermometers.
length of longest 37in (95.5cm)

\$1,000 - 1,500

390
A GROUP OF THREE LADY'S CANES

Comprising two with opera glasses and one with a porcelain baby head.
length of longest 36in (90.2cm)

\$600 - 800



391



392



393



394

391

PAUL GIOVANNI WICKSON (CANADIAN, 1859-1922)

An apple for her favorite
signed '© Paul Wickson' (lower right)

oil on canvas

33 x 43in (83.8 x 109.2cm)

\$2,000 - 3,000

392^w

J. STARK (BRITISH, 19TH CENTURY)

Cattle watering at a stream
signed 'J. Stark' (lower left)

oil on canvas

36 x 51in (91.4 x 129.5cm)

\$2,000 - 3,000

393

WOUTER JANSSEN (DUTCH, BORN 1946)

A frozen winter landscape with figures
signed 'Wouter Janssen Ft' (lower right)

oil on canvas

21 3/4 x 26 1/2in (55.3 x 67.3cm)

\$1,500 - 2,000

394

CHARLES BERTRAND D'ENTRAYGUES (FRENCH, 1850-1929)

Collecting flowers

signed and dated 'D'Entraygues / 1886' (lower right)

oil on canvas

14 x 11in (35.6 x 28cm)

\$800 - 1,200



395



397



396

395

AN ITALIAN GLASS AND TÔLE EIGHT-LIGHT CHANDELIER

height 48in (122cm); width 39in (99cm)

\$3,000 - 5,000

396^w

A PAIR OF STONE AND CARVED WOOD COLUMNS

height 114in (289cm)

\$2,000 - 3,000

397

TONI BORDIGNON (ITALIAN, BORN 1921)

Porto Veneziano

signed 'Toni Bordignon.' (lower right)

oil on canvas laid down on masonite

18 x 38 1/4in (45.7 x 97.2cm)

\$800 - 1,200



398

398

A PAIR OF CONTINENTAL INLAID EXOTIC WOOD ARMCHAIRS

height 36 1/2in (93cm); width 24in (61cm); depth 24in (61cm)

\$2,000 - 3,000

399

A FLUTED ROCK CRYSTAL CENTER BOWL ON A PAINTED WOOD STAND

height overall 15in (48cm); diameter 16 1/4in (41cm)

\$4,000 - 6,000



399



400

400

A PAIR OF LEVANTINE STYLE SHELL INLAID TABLES

height 31 1/2in (79cm); diameter 27 1/2in (70cm)

\$6,000 - 8,000



401

401

A CARVED MARBLE FIGURE OF PSYCHE IN A FAINT

Pietro Tenerani (1789 - 1869), 19th century

Signed *Pro. Tenerani. FVA, 1854.*

height 23 1/2in (60cm); width 21 1/8in (54cm); depth 15 1/4in (39cm)

\$15,000 - 20,000



402



403



404



405

402

SPANISH SCHOOL (19TH/20TH CENTURY)

The performance
indistinctly signed (lower left)
oil on canvas
22 1/2 x 32 3/4in (57.2 x 83.2cm)

\$1,200 - 1,800

403

CONTINENTAL SCHOOL (20TH CENTURY)

Picking flowers
signed with initials 'A S' (lower left)
oil on canvas
17 1/4 x 20 1/2in (43.8 x 52.1cm)

\$800 - 1,200

404^w

EUGÈNE DELESTRE (FRENCH, 1862-1919)

A flowering spring landscape
signed and dated 'Eug Delestre / 1914' (lower left)
oil on canvas
38 1/2 x 58in (97.8 x 147.3cm)

\$2,500 - 3,500

405

A. PALLIES (20TH CENTURY)

A rural village
signed A. Pallies' (lower right)
oil on canvas
22 1/4 x 28 3/4in (56.5 x 73cm)

\$1,000 - 1,500

406^w

A PAIR OF AMERICAN NEOCLASSICAL STYLE BRONZE AND SLAG GLASS CEILING LIGHTS

height 59in (150cm); diameter 33in (84cm)

\$4,000 - 6,000



406



407

407

ATTRIBUTED TO JOHN CARLIN (AMERICAN, 1813-1891)

A moonlit caravan

bears signature and indistinctly dated 'J. Carlin. 1857' (on the rock lower left)

oil on canvas

26 1/2 x 36 in (67.3 x 91.5cm)

\$4,000 - 6,000

408^w

A PAIR OF LIFESIZE PAINTED TERRACOTTA FIGURES OF DANCERS

height 72in (183cm); width 35in (89cm)

\$3,000 - 5,000

409

No lot



408



410

A SET OF FOUR MINERAL SPECIMEN SKULLS

Comprising a fluorite example, an amethyst example, a black obsidian example and a hematite example.

height 5 1/2in (14cm)

\$1,200 - 1,800

411

A PAIR OF MALACHITE VENEERED PEDESTALS

height 44in (112cm); width 16in (41cm) square

\$5,000 - 7,000



411



412

A SET OF FOUR ART MODERNE STYLE ROCK CRYSTAL CANDLESTICKS

height 13 1/2in (34cm)

\$2,500 - 3,500

412

413

A FRENCH PATINATED BRONZE GROUP: GLORIA VICTIS

Antonin Mercié (French, 1795-1875)

Signed A. Mercié.

height of bronze 32 1/4in (82cm); width 21in (53cm); depth 16in (40cm)

\$4,000 - 6,000



413



414

414

A PAIR OF CHINESE GILT AND PATINATED BRONZE FLOOR VASES

height 47in (119cm)

\$5,000 - 7,000

415

A PAIR OF LEVANTINE BONE AND SHELL INLAID SIDE TABLES

height 30 1/2in (77cm); width 19 1/2in (50cm) square

\$1,500 - 2,000



415



416

416

A PAIR OF MALACHITE AND BRASS FLOOR LAMPS

height 37 1/2in (95cm)

\$3,000 - 5,000

417

AN EGYPTIAN STYLE POLYCHROME AND GILTWOOD THRONE CHAIR

After the Antique

height 44in (111cm); width 24 1/2in (62cm); depth 28in (71cm)

\$1,500 - 2,000



417



418

418^w

A PAIR OF JAPANESE BRONZE FLOOR VASES

Meiji Period

height 53 1/2in (156cm); diameter 19in (49cm)

\$4,000 - 6,000



419^w

AN ARTS & CRAFTS EGYPTIAN REVIVAL CARVED OAK DINING SUITE

Early 20th century

Comprising an extension dining table, a set of 12 dining chairs including two arm chairs, a sideboard, and a cabinet, carved with winged sundiscs and other Egyptian elements, the central sideboard doors carved with a pharaoh and a goddess.

height of table 31in (79cm); width extended 140in (355.6cm); depth 45in (114.3cm); height of cabinet 70 1/2in (179cm); width 86in (216cm); depth 17 1/4in (44cm). Height of sideboard 39 1/2in (100cm); width 118in (300cm); depth 26in (66cm)

\$20,000 - 30,000



419



420



421



422



423



424



425

420

MAX BUDYET (20TH CENTURY)

Gentle marine waves
indistinctly signed 'Max Budyet' (lower right)
oil on canvas
17 x 25 1/2in (43.2 x 64.8cm)

\$800 - 1,200

421

A PAIR OF CHINESE BLUE AND RED GLAZED PORCELAIN COVERED JARS

height 22in (56cm)

\$800 - 1,200

422

A GROUP OF EIGHT MARBLE ORBS

diameter 8in (30cm)

\$800 - 1,200

423

LUCIENNE BISSON (FRENCH, 20TH CENTURY)

A summer landscape with cypress trees
signed 'Lucienne Bisson' (lower right)
oil on canvas
19 3/4 x 24in (50.2 x 61cm)

\$1,000 - 1,500

424

AN AESTHETIC MOVEMENT GILT BRONZE FOUR-PIECE CANDLESTICK GARNITURE

height of tallest 14in (36cm)

\$700 - 900

425

A PAIR OF ART DECO STYLE MARBLE TOP GILT BRONZE CONSOLES

height 40 1/8in (102cm); width 42in (17cm); depth 12 1/4in (31cm)

\$2,000 - 3,000

426^w

A PAIR OF FRENCH BRONZE AND GLASS VITRINES

height 71 1/2in (181cm); width 39 1/2in (99cm); depth 14 1/2in (27cm)

\$3,000 - 5,000



426



427



428



429



430

427^w

A PAIR OF ART DECO STYLE EXOTIC WOOD CONSOLE TABLES

height 48in (121cm); width 27in (68cm); depth 18in (45cm)

\$1,500 - 2,500

428^w

AN ART MODERNE STYLE CELLO FORM CHEST OF DRAWERS

height 63in (160cm); width 22in (55cm); depth 15in (38cm)

\$1,000 - 1,500

429

A PAIR OF ART DECO STYLE PARQUETRY SIDE TABLES

height 30in (76cm); width 17in (43cm); depth 15in (38cm)

\$600 - 800

430

A PAIR ART DECO STYLE OLIVEWOOD SIDE TABLES

height 26in (66cm); width 23in (58cm); depth 16in (40cm)

\$600 - 800



431

431^w

A PATINATED BRONZE FIGURAL BENCH

Alejandro Colunga (born 1948), from the series *La Sala de los Magos y los Magos Universales*

Initialed AC on each shoe.

height 45in (114cm); width 83 1/2in (212cm); depth 45 1/2in (116cm)

\$15,000 - 25,000



432

432^w

A MODERN TIGER EYE VENEERED TABLE TOP

width 72in (183cm); depth 48in (122cm)

\$6,000 - 8,000

433

A CARVED BLACK MARBLE FIGURE OF A RHINOCEROS

On a giltwood base.

height 16 1/2in (42cm); width 36in (92cm); depth 11 1/2in (29cm)

\$1,500 - 2,000



433



434

434^w

A PAIR OF PAINTED IRON TREE FORM TORCHÈRES ON FAUX MARBLE BASES

height 103in (262cm); diameter of base 32 1/2in (82cm)

\$4,000 - 6,000



435



436



437



438

435

AN AUBUSSON RUG

19th century

dimensions approximately 182 x 156in (462 x 396cm)

\$800 - 1,200

436

A KERMAN CARPET

20th century

dimensions approximately 208 x 144in (528 x 366cm)

\$2,000 - 3,000

437

A CHINESE CARPET

20th century

dimensions approximately 148 x 108in (376 x 274cm)

\$1,000 - 1,500

438

AN AUBUSSON CARPET

19th century

dimensions approximately 240 x 155in (610 x 394cm)

\$2,000 - 3,000



439



440



441



442

439

A KERMAN CARPET

20th century

dimensions approximately 145 x 114in (368 x 290cm)

\$1,200 - 1,800

440

A KERMAN CARPET

20th century

dimensions approximately 172 x 118in (437 x 300cm)

\$1,200 - 1,800

441

A MASHAD CARPET

20th century

dimensions approximately 183 x 120in (465 x 305cm)

\$1,500 - 2,000

442

A KASHAN CARPET

20th century

dimensions approximately 201 x 131in (510 x 333cm)

\$1,500 - 2,000



443



444



445



446

443

A NEEDLEPOINT CARPET

20th century

dimensions approximately 163 x 185in (414 x 470cm)

\$800 - 1,000

444

A CHINESE RUG

20th century

dimensions approximately 145 x 109in (368 x 277cm)

\$800 - 1,200

445

A SAROUK CARPET

20th century

dimensions approximately 156 x 114in (396 x 290cm)

\$1,000 - 1,500

446

AN INDIAN CARPET

20th century

dimensions approximately 96 x 120in (244 x 305cm)

\$600 - 800



447

447

A KURDISH CARPET

20th century

dimensions approximately 85 x 63in (216 x 160cm)

\$800 - 1,200

448

A KASHAN RUG

20th century

dimensions approximately 59 x 40in (150 x 10cm)

\$1,000 - 1,500



448



449

449

A SAROUK RUG

20th century

dimensions approximately 55 x 29in (140 x 74cm)

\$400 - 600



450

450

A SAROUK RUNNER

20th century

dimensions approximately 119 x 49in (302 x 125cm)

\$1,000 - 1,500



451

451

AN ENGLISH NEEDLEPOINT RUNNER

19th century

dimensions approximately 272 x 93in (691 x 2236cm)

\$2,000 - 3,000

END OF SALE

Bonhams

AUCTIONEERS SINCE 1793



Gemstones and Minerals Online Only

Los Angeles | November 10, 2020

INQUIRIES

+1 (323) 436 5421
claudia.florian@bonhams.com
bonhams.com/LWA

VERY FINE GREEN TOURMALINE

*Weighing 26.77 carats and measuring
20.96 x 14.30 x 10.80mm
\$2000 - 3000*

Bonhams

AUCTIONEERS SINCE 1793



European Fine Living

Los Angeles | 17 November 2020

INQUIRIES

+1 (323) 436 5463
anna.hicks@bonhams.com
[bonhams.com/furniture](https://www.bonhams.com/furniture)

Property from the Estate of Ann and Pete Jackson
**A FINE GORHAM MARTELÉ SILVER ART NOUVEAU
SIX-PIECE TEA AND COFFEE SERVICE**
Providence, Rhode Island, circa 1900
\$20,000 – 30,000

Conditions of sale

The following Conditions of Sale, as amended by any published or posted notices or verbal announcements during the sale, constitute the entire terms and conditions on which property listed in the catalog shall be offered for sale or sold by Bonhams & Butterfields Auctioneers Corp. and any consignor of such property for whom Bonhams acts as agent. By participating in this sale, you agree to be bound by these terms and conditions.

If live online bidding is available for the subject auction, additional terms and conditions of sale relating to online bidding will apply; see www.bonhams.com/WebTerms for the supplemental terms. As used herein, "Bonhams," "we" and "us" refer to Bonhams & Butterfields Auctioneers Corp.

1. As used herein, the term "bid price" means the price at which a lot is successfully knocked down to the buyer. The term "purchase price" means the aggregate of (a) the bid price, (b) a PREMIUM retained by us and payable by the buyer (the "buyer's premium"), EQUAL TO 27.5% OF THE FIRST \$3,000 OF THE BID PRICE, 25% OF THE AMOUNT OF THE BID PRICE ABOVE \$3,000 UP TO AND INCLUDING \$400,000, 20% OF THE AMOUNT OF THE BID PRICE ABOVE \$400,000 UP TO AND INCLUDING \$4,000,000, AND 13.9% OF THE AMOUNT OF THE BID PRICE OVER \$4,000,000, and (c) unless the buyer is exempt by law from the payment thereof, any Alabama, Arizona, California, Colorado, Connecticut, Florida, Georgia, Hawaii, Idaho, Illinois, Iowa, Indiana, Kentucky, Louisiana, Maine, Maryland, Massachusetts, Michigan, Minnesota, Mississippi, Nebraska, Nevada, New Jersey, New York, North Carolina, Ohio, Oklahoma, Pennsylvania, Rhode Island, South Carolina, Texas, Utah, Virginia, Washington, D.C., Washington state, West Virginia, Wisconsin, Wyoming or other state or local sales tax (or compensating use tax) and other applicable taxes. With regard to New York sales tax, please refer to the "Sales and Use Tax" section of these Conditions of Sale.

2. In order to bid at the sale, prospective bidders must submit to Bonhams a completed bidder registration form (appearing at the end of this catalog) and any other requested information or references. New bidders and bidders who have not recently updated their registration information must pre-register to bid at least two business days before the sale. Individuals will be required to provide government-issued proof of identity and proof of address. Entity clients will be required to provide documentation including confirmation of entity registration showing the registered name, confirmation of registered address, documentary proof of officers and beneficial owners, proof of authority to transact on behalf of the entity and government-issued proof of identity for the individual who is transacting on the entity's behalf.

We may also request a financial reference and/or deposit from bidders before approving the bidder registration. In the event a deposit is submitted and you are not the successful bidder, your deposit will be returned to you. If you are the successful bidder, any such deposit will be credited to offset the appropriate portion of the purchase price.

We reserve the right to request further information, including regarding the source of funds, in order to complete bidder identification and registration procedures (including completing any anti-money laundering and/or anti-terrorism financing checks we may require) to our satisfaction. If our bidder identification and registration procedures are not satisfied, we may, in our sole discretion, decline to register any bidder or reject any bid or cancel any sale to such bidder.

Every bidder shall be deemed to act as a principal unless prior to the commencement of the sale there is a written acceptance by Bonhams of a bidder registration form completed and signed by the principal which clearly states that the authorized bidding agent is acting on behalf of the named principal. Absent such written acceptance by Bonhams, any person placing a bid as agent on behalf of another (whether or not such person has disclosed that fact or the identity of the principal) may be jointly and severally

liable with the principal under any contract resulting from the acceptance of a bid. Every bidder shall be responsible for any use of its assigned paddle or bidding account, regardless of the circumstances.

3. You represent and warrant that: (i) you have provided us with true and correct copies of valid identification and proof of residence and, if applicable, financial and/or corporate documents; (ii) neither you, your principal (if applicable, and subject to Bonhams' prior written acceptance pursuant to paragraph 2 above), nor any individual or entity with a beneficial or ownership interest in either or in the purchase transaction is on the Specially Designated Nationals List maintained by the Office of Foreign Assets Control of the U.S. Department of the Treasury nor subject to any other sanctions or embargo program or regulation in effect in the United States, European Union, England and Wales, or other applicable jurisdictions; (iii) if you are acting as an agent for a principal, you have conducted appropriate due diligence into such principal, and agree that Bonhams shall be entitled to rely upon such due diligence, you will retain adequate records evidencing such due diligence for a period of five (5) years following the consummation of the sale, and will make these records available for inspection upon Bonhams' request; (iv) neither the purchase transaction (including your bidding activity) nor the purchase funds are connected with nor derive from any criminal activity, and they are not designed to nor have they or shall they, violate the banking, anti-money laundering, or currency transfer laws or other regulations (including without limitation, import-export laws) of any country or jurisdiction, or further any other unlawful purpose, including without limitation collusion, anti-competitive activity, tax evasion or tax fraud.

You acknowledge and agree that we may rely upon the accuracy and completeness of the foregoing warranties.

4. On the fall of the auctioneer's hammer, the highest bidder shall have purchased the offered lot in accordance and subject to compliance with all of the conditions set forth herein and (a) assumes full risk and responsibility therefor, (b) if requested will sign a confirmation of purchase, and (c) will pay the purchase price in full or such part as we may require for all lots purchased. No lot may be transferred.

Unless otherwise agreed, payment in good, cleared funds is due and payable within five (5) business days following the auction sale. Whenever the buyer pays only a part of the total purchase price for one or more lots purchased, we may apply such payments, in our sole discretion, to the lot or lots we choose. Payment will not be deemed made in full until we have received good, cleared funds for all amounts due. Title in any purchased property will not pass until full and final payment has been received by Bonhams. Accounts must be settled in full before property is released to the buyer. In the event property is released earlier, such release will not affect the passing of title or the buyer's obligation to timely remit full payment.

We reserve the right to refuse to accept payment from a source other than the registered bidder or buyer of record. Once an invoice is issued, we cannot change the buyer's name on an invoice.

Payment for purchases must be made in the currency in which the sale is conducted and may be made in or by (a) cash, up to the amount of US \$5,000 (whether by single or multiple related payments), or the equivalent in the currency in which the sale is conducted, (b) cashier's check or money order, (c) personal check with approved credit drawn on a U.S. bank, (d) wire transfer or other immediate bank transfer, or (e) Visa, MasterCard, American Express or Discover credit, charge or debit card, provided that the registered bidder or buyer's name is printed on the card. A processing fee will be assessed on any returned checks.

To the fullest extent permitted by applicable law, the buyer grants us a security interest in the property, and we may retain as collateral security for the buyer's obligations to us, any property and all monies held or received by us for the

account of the buyer, in our possession. We also retain all rights of a secured party under the California Commercial Code, and you agree that we may file financing statements without your signature. If the foregoing conditions or any other applicable conditions herein are not complied with, in addition to all other remedies available to us and the consignor by law, we may at our election: (a) hold the buyer liable for the full purchase price and any late charges, collection costs, attorneys' fees and costs, expenses and incidental damages incurred by us or the consignor arising out of the buyer's breach; (b) cancel the sale, retaining as liquidated damages all payments made by the buyer; and/or (c) cancel the sale and/or resell the purchased property, at public auction and/or by private sale, and in such event the buyer shall be liable for the payment of all consequential damages, including any deficiencies or monetary losses, and all costs and expenses of such sale or sales, our commissions at our standard rates, all other charges due hereunder, all late charges, collection costs, attorneys' fees and costs, expenses and incidental damages. In addition, where two or more amounts are owed in respect of different transactions by the buyer to us, to Bonhams 1793 Limited and/or to any of our other affiliates, subsidiaries or parent companies worldwide within the Bonhams Group, we reserve the right to apply any monies paid in respect of a transaction to discharge any amount owed by the buyer. If all fees, commissions, premiums, bid prices and other sums due to us from the buyer are not paid promptly as provided in these Conditions of Sale, we reserve the right to impose a finance charge equal to 1.5% per month (or, if lower, the maximum nonusurious rate of interest permitted by applicable law), on all amounts due to us beginning on the 31st day following the sale until payment is received, in addition to other remedies available to us by law.

5. We reserve the right to withdraw any property and to divide and combine lots at any time before such property's auction. Unless otherwise announced by the auctioneer at the time of sale, all bids are per lot as numbered in the catalog and no lots shall be divided or combined for sale.

6. We reserve the right to reject a bid from any bidder, to split any bidding increment, and to advance the bidding in any manner the auctioneer may decide. In the event of any dispute between bidders, or in the event the auctioneer doubts the validity of any bid, the auctioneer shall have sole and final discretion either to determine the successful bidder, re-open the bidding, or to cancel the sale and re-offer and resell the article in dispute. If any dispute arises after the sale, our sales records shall be conclusive in all respects.

We further reserve the right to cancel the sale of any property if (i) you are in breach of your representations and warranties as set forth in paragraph 3 above; (ii) we, in our sole discretion, determine that such transaction might be unlawful or might subject Bonhams or the consignor to any liability to any third party; or (iii) there are any other grounds for cancellation under these Conditions of Sale.

7. If we are prevented by fire, theft or any other reason whatsoever from delivering any property to the buyer or a sale otherwise cannot be completed, our liability shall be limited to the sum actually paid therefor by the buyer and shall in no event include any compensatory, incidental or consequential damages.

8. All lots in the catalog are offered subject to a reserve unless otherwise indicated in the catalog. The reserve is the confidential minimum bid price at which such lot will be sold and it does not exceed the low estimate value for the lot. If a lot is offered subject to a reserve, we may implement such reserve by bidding on behalf of the consignor, whether by opening bidding or continuing bidding in response to other bidders until reaching the reserve. If we have an interest in an offered lot and the proceeds therefrom other than our commissions, we may bid up to the reserve to protect such interest. If the auctioneer determines that any opening or subsequent bid is below the reserve for a lot, (s)he may reject such opening bid and withdraw the item from sale.

Conditions of sale - Continued

CONSIGNORS ARE NOT ALLOWED TO BID ON THEIR OWN ITEMS.

9. Other than as provided in the Limited Right of Rescission with respect to identification of authorship, all property is sold "AS IS" and any statements contained in the catalog or in any advertisement, bill of sale, announcement, condition report, invoice or elsewhere as to period, culture, source, origin, media, measurements, size, quality, rarity, provenance, importance, exhibition and literature of historical relevance, merchantability, fitness for a particular purpose, or physical condition ARE QUALIFIED STATEMENTS OF OPINION AND NOT REPRESENTATIONS, WARRANTIES, OR ASSUMPTION OF LIABILITY. Neither Bonhams nor the consignor shall be responsible for any error or omission in the catalog description of any property. No employee or agent of Bonhams is authorized to make on our behalf or on that of the consignor any representation or warranty, oral or written, with respect to any property.

10. All purchased property shall be removed from the premises at which the sale is conducted by the date(s) and time(s) set forth in the "Buyer's Guide" portion of this catalog. If not so removed, daily storage fees will be payable to us by the buyer as set forth therein. We reserve the right to transfer property not so removed to an offsite warehouse at the buyer's risk and expense, as set forth in more detail in the "Buyer's Guide." Packing and handling of purchased lots are the responsibility of the buyer and at the buyer's entire risk, as are the identification, application for, and cost(s) of obtaining of any necessary export, import, restricted material (e.g. endangered species) or other permit for such lots.

For an additional fee, Bonhams may provide packing and shipping services for certain items as noted in the "Buyer's Guide" section of the catalog.

11. The copyright in the text of the catalog and the photographs, digital images and illustrations of lots in the catalog belong to Bonhams or our licensors. You will not reproduce or permit anyone else to reproduce such text, photographs, digital images or illustrations without our prior written consent. Bonhams and the consignor make no representation or warranty as to whether the buyer acquires any copyrights on the purchase of an item of Property.

12. Bonhams may, in our discretion, as a courtesy and free of charge, execute bids on your behalf if so instructed by you, provided that neither Bonhams nor our employees or agents will be liable for any error or default (whether human or otherwise) in doing so or for failing to do so. Without limiting the foregoing, Bonhams (including our agents and employees) shall not be responsible for any problem relating to telephone, online, or other bids submitted remotely through any means, including without limitation, any telecommunications or internet fault or failure, or breakdown or problems with any devices or online platforms, including third-party online platforms, regardless of whether such issue arises with our, your, or such third-party's technology, equipment, or connection. By participating at auction by telephone or online, bidders expressly consent to the recording of their bidding sessions and related communications with Bonhams and our employees and agents, and acknowledge their acceptance of these Conditions of Sale as well as any additional terms and conditions applicable to any such bidding platform or technology.

13. These Conditions of Sale shall bind the successors and assigns of all bidders and buyers and inure to the benefit of our successors and assigns. No waiver, amendment or modification of the terms hereof (other than posted notices or oral announcements during the sale) shall bind us unless specifically stated in writing and signed by us. No act or omission of Bonhams, its employees or agents, nor any failure thereof to exercise any remedy hereunder, shall operate or be deemed to operate as a waiver of Bonhams' rights under these Conditions of Sale. If any part of these Conditions of Sale is for any reason invalid or unenforceable, the rest shall remain valid and enforceable.

14. These Conditions of Sale and the buyer's and our respective rights and obligations hereunder shall be governed by and construed and enforced in accordance with the laws of the State of California. Any dispute, controversy or claim arising out of or relating to this agreement, or the breach, termination or validity thereof, brought by or against Bonhams (but not including claims brought against the consignor by the buyer of lots consigned hereunder) shall be resolved by the procedures set forth below.

15. You accept and agree that Bonhams will hold and process your personal information and may share and use it as required by law and as described in, and in line with Bonhams' Privacy Policy, available at website at www.bonhams.com/legals/. If you desire access, update, or restriction to the use of your personal information, please email data.protection@bonhams.com.

SALES AND USE TAX

New York sales tax is charged on the hammer price, buyer's premium and any other applicable charges on any property collected or delivered in New York State, regardless of the state or country in which the buyer resides or does business. Buyers who make direct arrangements for collection by a shipper who is considered a "private" or "contract" carrier by the New York Department of Taxation and Finance will be charged New York sales tax, regardless of the destination of the property. Property collected for delivery to a destination outside of New York by a shipper who is considered a "common carrier" by the New York Department of Taxation and Finance (e.g. United States Postal Service, United Parcel Service, and FedEx) is not subject to New York sales tax, but if it is delivered into any state in which Bonhams is registered or otherwise conducts business sufficient to establish a nexus, Bonhams may be required by law to collect and remit the appropriate sales tax in effect in such state. Property collected for delivery outside of the United States by a freight-forwarder who is registered with the Transportation Security Administration ("TSA") is not subject to New York sales tax.

MEDIATION AND ARBITRATION PROCEDURES

(a) Within 30 days of written notice that there is a dispute, the parties or their authorized and empowered representatives shall meet by telephone and/or in person to mediate their differences. If the parties agree, a mutually acceptable mediator shall be selected and the parties will equally share such mediator's fees. The mediator shall be a retired judge or an attorney familiar with commercial law and trained in or qualified by experience in handling mediations. Any communications made during the mediation process shall not be admissible in any subsequent arbitration, mediation or judicial proceeding. All proceedings and any resolutions thereof shall be confidential, and the terms governing arbitration set forth in paragraph (c) below shall govern.

(b) If mediation does not resolve all disputes between the parties, or in any event no longer than 60 days after receipt of the written notice of dispute referred to above, the parties shall submit the dispute for binding arbitration before a single neutral arbitrator. Such arbitrator shall be a retired judge or an attorney familiar with commercial law and trained in or qualified by experience in handling arbitrations. Such arbitrator shall make all appropriate disclosures required by law. The arbitrator shall be drawn from a panel of a national arbitration service agreed to by the parties, and shall be selected as follows: (i) If the national arbitration service has specific rules or procedures, those rules or procedures shall be followed; (ii) If the national arbitration service does not have rules or procedures for the selection of an arbitrator, the arbitrator shall be an individual jointly agreed to by the parties. If the parties cannot agree on a national arbitration service, the arbitration shall be conducted by the American Arbitration Association, and the arbitrator shall be selected in accordance with the Rules of the American Arbitration Association. The arbitrator's award shall be in writing and shall set forth findings of fact and legal conclusions.

(c) Unless otherwise agreed to by the parties or provided by the published rules of the national arbitration service:

(i) the arbitration shall occur within 60 days following the selection of the arbitrator;

(ii) the arbitration shall be conducted in the designated location, as follows: (A) in any case in which the subject auction by Bonhams took place or was scheduled to take place in the State of New York or Connecticut or the Commonwealth of Massachusetts, the arbitration shall take place in New York City, New York; (B) in all other cases, the arbitration shall take place in the city of San Francisco, California; and

(iii) discovery and the procedure for the arbitration shall be as follows:

(A) All arbitration proceedings shall be confidential;

(B) The parties shall submit written briefs to the arbitrator no later than 15 days before the arbitration commences;

(C) Discovery, if any, shall be limited as follows: (i) Requests for no more than 10 categories of documents, to be provided to the requesting party within 14 days of written request thereof; (ii) No more than two (2) depositions per party, provided however, the deposition(s) are to be completed within one (1) day; (iii) Compliance with the above shall be enforced by the arbitrator in accordance with California law;

(D) Each party shall have no longer than eight (8) hours to present its position. The entire hearing before the arbitrator shall not take longer than three (3) consecutive days;

(E) The award shall be made in writing no more than 30 days following the end of the proceeding. Judgment upon the award rendered by the arbitrator may be entered by any court having jurisdiction thereof.

To the fullest extent permitted by law, and except as required by applicable arbitration rules, each party shall bear its own attorneys' fees and costs in connection with the proceedings and shall share equally the fees and expenses of the arbitrator.

LIMITED RIGHT OF RESCISSION

If within one (1) year from the date of sale, the original buyer (a) gives written notice to us alleging that the identification of Authorship (as defined below) of such lot as set forth in the **BOLD TYPE** heading of the catalog description of such lot (as amended by any saleroom notices or verbal announcements during the sale) is not substantially correct based on a fair reading of the catalog (including the terms of any glossary contained therein), and (b) within 10 days after such notice returns the lot to us in the same condition as at the time of sale, and (c) establishes the allegation in the notice to our satisfaction (including by providing one or more written opinions by recognized experts in the field, as we may reasonably require), then the sale of such lot will be rescinded and, unless we have already paid to the consignor monies owed him in connection with the sale, the original purchase price will be refunded.

If, prior to receiving such notice from the original buyer alleging such defect, we have paid the consignor monies owed him in connection with the sale, we shall pay the original buyer the amount of our commissions, any other sale proceeds to which we are entitled and applicable taxes received from the buyer on the sale and make demand on the consignor to pay the balance of the original purchase price to the original buyer. Should the consignor fail to pay such amount promptly, we may disclose the identity of the consignor and assign to the original buyer our rights against the consignor with respect to the lot the sale of which is sought to be rescinded. Upon such disclosure and assignment, any liability of Bonhams as consignor's agent with respect to said lot shall automatically terminate.

The foregoing limited right of rescission is available to the original buyer only and may not be assigned to or relied upon

Conditions of sale - Continued

by any subsequent transferee of the property sold. The buyer hereby accepts the benefit of the consignor's warranty of title and other representations and warranties made by the consignor for the buyer's benefit. Nothing in this section shall be construed as an admission by us of any representation of fact, express or implied, obligation or responsibility with respect to any lot. THE BUYER'S SOLE AND EXCLUSIVE REMEDY AGAINST BONHAMS FOR ANY REASON WHATSOEVER IS THE LIMITED RIGHT OF RESCISSION DESCRIBED IN THIS SECTION.

"Authorship" means only the identity of the creator, the period, culture and source or origin of the lot, as the case may be, as set forth in the **BOLD TYPE** heading of the print catalog entry. The right of rescission does not extend to: (a) works of art executed before 1870 (unless these works are determined to be counterfeits created since 1870), as this is a matter of current scholarly opinion which can change; (b) titles, descriptions, or other identification of offered lots, which information normally appears in lower case type below the **BOLD TYPE** heading identifying the Authorship; (c) Authorship of any lot where it was specifically mentioned that there exists a conflict of specialist or scholarly opinion regarding the Authorship of the lot at the time of sale; (d) Authorship of any lot which as of the date of sale was in accordance with the then generally-accepted opinion of scholars and specialists regarding the same; or (e) the identification of periods or dates of creation in catalog descriptions which may be proven inaccurate by means of scientific processes that are not generally accepted for use until after publication of the catalog in which the property is offered or that were unreasonably expensive or impractical to use at the time of such publication.

LIMITATION OF LIABILITY

EXCEPT AS EXPRESSLY PROVIDED ABOVE, ALL PROPERTY IS SOLD "AS IS." NEITHER BONHAMS NOR THE CONSIGNOR MAKES ANY REPRESENTATION

OR WARRANTY, EXPRESS OR IMPLIED, AS TO THE MERCHANTABILITY, FITNESS OR CONDITION OF THE PROPERTY OR AS TO THE CORRECTNESS OF DESCRIPTION, GENUINENESS, ATTRIBUTION, PROVENANCE OR PERIOD OF THE PROPERTY OR AS TO WHETHER THE BUYER ACQUIRES ANY COPYRIGHTS OR OTHER INTELLECTUAL PROPERTY RIGHTS IN LOTS SOLD OR AS TO WHETHER A WORK OF ART IS SUBJECT TO THE ARTIST'S MORAL RIGHTS OR OTHER RESIDUAL RIGHTS OF THE ARTIST. THE BUYER EXPRESSLY ACKNOWLEDGES AND AGREES THAT IN NO EVENT SHALL BONHAMS BE LIABLE FOR ANY DAMAGES INCLUDING, WITHOUT LIMITATION, ANY COMPENSATORY, INCIDENTAL OR CONSEQUENTIAL DAMAGES. IN NO EVENT SHALL THE AGGREGATE LIABILITY OF BONHAMS AND ITS CONSIGNOR TO A PURCHASER EXCEED THE PURCHASE PRICE ACTUALLY PAID FOR A DISPUTED ITEM OF PROPERTY.

Seller's guide

SELLING AT AUCTION

Bonhams can help you every step of the way when you are ready to sell art, antiques and collectible items at auction. Our regional offices and representatives throughout the US are available to service all of your needs. Should you have any further questions, please visit our website at www.bonhams.com/us for more information or call our Client Services Department at +1 (323) 850 7500.

AUCTION ESTIMATES

The first step in the auction process is to determine the auction value of your property. Bonhams' world-renowned specialists will evaluate your special items at no charge and in complete confidence. You can obtain an auction estimate in many ways:

- Attend one of our Auction Evaluation Events held regularly at our galleries and in other major metropolitan areas. The updated schedule for Bonhams Auction Evaluation Events is available at www.bonhams.com/us.
- Call our Client Services Department to schedule a private appointment at one of our galleries. If you have a large collection, our specialists can travel, by appointment, to evaluate your property on site.
- Send clear photographs to us of each individual item, including item dimensions and other pertinent information with each picture. Photos should be sent to Bonhams' address in envelopes marked as "photo auction estimate". Alternatively, you can submit your request using our online form at www.bonhams.com/us. Digital images may be attached to the form. Please limit your images to no more than five (5) per item.

CONSIGNING YOUR PROPERTY

After you receive an estimate, you may consign your property to us for sale in the next appropriate auction. Our staff assists you throughout the process, arranging transportation of your items to our galleries (at the consignor's expense), providing a detailed inventory of your consignment, and reporting the prices realized for each lot. We provide secure storage for your property in our warehouses and all items are insured throughout the auction process. You will receive payment for your property approximately 35 days after completion of sale.

Sales commissions vary with the potential auction value of the property and the particular auction in which the property is offered. Please call us for commission rates.

PROFESSIONAL APPRAISAL SERVICES

Bonhams' specialists conduct insurance and fair market value appraisals for private collectors, corporations, museums, fiduciaries and government entities on a daily basis. Insurance appraisals, used for insurance purposes, reflect the cost of replacing property in today's retail market. Fair market value appraisals are used for estate, tax and family division purposes and reflect prices paid by a willing buyer to a willing seller.

When we conduct a private appraisal, our specialists will prepare a thorough inventory listing of all your appraised property by category. Valuations, complete descriptions and locations of items are included in the documentation.

Appraisal fees vary according to the nature of the collection, the amount of work involved, the travel distance, and whether the property is subsequently consigned for auction.

Our appraisers are available to help you anywhere and at any time. Please call our Client Services Department to schedule an appraisal.

ESTATE SERVICES

Since 1865, Bonhams has been serving the needs of fiduciaries – lawyers, trust officers, accountants and executors – in the disposition of large and small estates. Our services are specially designed to aid in the efficient appraisal and disposition of fine art, antiques, jewelry, and collectibles. We offer a full range of estate services, ranging from flexible financial terms to tailored accounting for heirs and their agents to world-class marketing and sales support.

For more information or to obtain a detailed Trust and Estates package, please visit our website at www.bonhams.com/us or contact our Client Services Department.

Buyer’s guide

BIDDING & BUYING AT AUCTION

Whether you are an experienced bidder or an enthusiastic novice, auctions provide a stimulating atmosphere unlike any other. Bonhams previews and sales are free and open to the public. As you will find in these directions, bidding and buying at auction is easy and exciting. Should you have any further questions, please visit our website at www.bonhams.com or call our Client Services Department at +1 (323) 850 7500.

Catalogs

Before each auction we publish illustrated catalogs. Our catalogs provide descriptions and estimated values for each "lot." A lot may refer to a single item or to a group of items auctioned together. The catalogs also include the dates and the times for the previews and auctions. We offer our catalogs by subscription or by single copy. For information on subscribing to our catalogs, you may refer to the subscription form in this catalog, call our Client Services Department, or visit our website at www.bonhams.com/us.

Previews

Auction previews are your chance to inspect each lot prior to the auction. We encourage you to look closely and examine each object on which you may want to bid so that you will know as much as possible about it. Except as expressly set forth in the Conditions of Sale, items are sold "as is" and with all faults; illustrations in our catalogs, website and other materials are provided for identification only. At the previews, our staff is always available to answer your questions and guide you through the auction process. Condition reports may be available upon request.

Estimates

Bonhams catalogs include estimates for each lot, exclusive of buyer's premium and tax. The estimates are provided as an approximate guide to current market value and should not be interpreted as a representation or prediction of actual selling prices. They are determined well in advance of a sale and are subject to revision. Please contact us should you have any questions about value estimates.

Reserves

All lots in a catalog are subject to a reserve unless otherwise indicated. The reserve is the minimum price that the seller is willing to accept for a lot. This amount is confidential and does not exceed the low estimated value.

Auction House's Interest in Property Offered at Auction

On occasion, Bonhams may offer property in which it has an ownership interest in whole or in part or otherwise has an economic interest. Such property, if any, is identified in the catalog with a ▲ symbol next to the lot number(s).

Bonhams may also offer property for a consignor that has been guaranteed a minimum price for its property by Bonhams or jointly by Bonhams and a third party. Bonhams and any third parties providing a guarantee may benefit financially if the guaranteed property is sold successfully and may incur a financial loss if its sale is not successful. Such property, if any, is identified in the catalog with a ○ symbol next to the lot number(s).

Bidding at Auction

At Bonhams, you can bid in many ways: in person, via absentee bid, over the phone, or via Bonhams' online bidding facility. Absentee bids can be submitted in person, online, via fax or via email.

A valid Bonhams client account is required to participate in bidding activity. You can obtain registration information online, at the reception desk or by calling our Client Services Department.

By bidding at auction, whether in person or by agent, by absentee bid, telephone, online or other means, the buyer or bidder agrees to be bound by the Conditions of Sale.

Lots are auctioned in consecutive numerical order as they appear in the catalog. Bidding normally begins below the low estimate. The auctioneer will accept bids from interested parties present in the saleroom, from telephone bidders, and from absentee bidders who have left written bids in advance of the sale. The auctioneer may also execute bids on behalf of the consignor up to the amount of the reserve, but never above it.

We assume no responsibility for failure to execute bids for any reason whatsoever.

In Person (Not applicable to this sale)

If you are planning to bid at auction for the first time, you will need to register at the reception desk in order to receive a numbered bid card. To place a bid, hold up your card so that the auctioneer can clearly see it. Decide on the maximum auction price that you wish to pay, exclusive of buyer's premium and tax, and continue bidding until your bid prevails or you reach your limit. If you are the successful bidder on a lot, the auctioneer will acknowledge your paddle number and bid amount.

Absentee Bids

As a service to those wishing to place bids, we may at our discretion accept bids without charge in advance of auction online or in writing on bidding forms available from us. "Buy" bids will not be accepted; all bids must state the highest bid price the bidder is willing to pay. Our auction staff will try to bid just as you would, with the goal of obtaining the item at the lowest bid price possible. In the event identical bids are submitted, the earliest bid submitted will take precedence. Absentee bids shall be executed in competition with other absentee bids, any applicable reserve, and bids from other auction participants. A friend or agent may place bids on your behalf, provided that we have received your written authorization prior to the sale. Absentee bid forms are available in our catalogs, online at www.bonhams.com/us, at offsite auction locations and at our Los Angeles, San Francisco and New York galleries.

By Telephone

We can arrange for you to bid by telephone. To arrange for a telephone bid, please contact our Client Services Department a minimum of 24 hours prior to the sale.

Online

We offer live online bidding for most auctions and accept absentee bids online for all our auctions. Please visit www.bonhams.com/us for details.

Bid Increments

Bonhams generally uses the following increment multiples as bidding progresses:

\$50-200	by \$10s
\$200-500	by \$20/50/80s
\$500-1,000	by \$50s
\$1,000-2,000	by \$100s
\$2,000-5,000	by \$200/500/800s
\$5,000-10,000	by \$500s
\$10,000-20,000	by \$1,000s
\$20,000-50,000	by \$2,000/5,000/8,000s
\$50,000-100,000	by \$5,000s
\$100,000-200,000	by \$10,000s
above \$200,000	at auctioneer's discretion

The auctioneer may split or reject any bid at any time at his or her discretion as outlined in the Conditions of Sale.

Currency Converter

Solely for the convenience of bidders, a currency converter may be provided at Bonhams' auctions. The rates quoted for conversion of other currencies to U.S. Dollars are indications only and should not be relied upon by a bidder, and neither Bonhams nor its agents shall be responsible for any errors or omissions in the operation or accuracy of the currency converter.

Buyer's Premium

A buyer's premium is added to the winning bid price of each individual lot purchased, at the rates set forth in the Conditions of Sale. The winning bid price plus the premium constitute the purchase price for the lot. Applicable sales taxes are computed based on this figure and the total becomes your final purchase price.

Unless specifically illustrated and noted, fine art frames are not included in the estimate or purchase price. Bonhams accepts no liability for damage or loss to frames during storage or shipment.

All sales are final and subject to the Conditions of Sale found in our catalogs, on our website and are available at the reception desk.

Payment

Payment may be made to Bonhams by cash, checks drawn on a U.S. bank, money order, wire transfer, or by Visa, MasterCard, American Express or Discover credit or charge card or debit card. All items must be paid for within 5 business days of the sale. Please note that payment by personal or business check may result in property not being released until purchase funds clear our bank. For payments sent by mail, please remit to Bonhams Client Services Department, 7601 Sunset Boulevard, Los Angeles, CA 94103.

Sales Tax

Residents of states listed in Paragraph 1 of the Conditions of Sale must pay applicable sales tax. Other state or local taxes (or compensation use taxes) may apply. Sales tax will be automatically added to the invoice unless a valid resale number has been furnished or the property is shipped via common carrier to destinations outside the states listed in the Conditions of Sale. If you wish to use your resale license please contact Client Services for our form.

Shipping & Removal

Bonhams can accommodate shipping for certain items. Please contact our Client Services Department for more information or to obtain a quote. Carriers are not permitted to deliver to PO boxes.

International buyers are responsible for all import/export customs duties and taxes. An invoice stating the actual purchase price will accompany all international purchases.

Collection of Purchases

Please arrange for the packing and transport of your purchases prior to collection at our office. If you are sending a third party shipper, please request a release form from us and return it to; invoices.us@bonhams.com prior to your scheduled pickup. To schedule collection of purchases, please contact our Client Services Department on +1 (323) 850 7500. For your convenience, pre-allocated 30 minute collection time slots are available Monday through Friday between 9am – 4:30pm. Payment in full of purchased lot prior to arrival will ensure the quick release of your property.

Auction Registration Form

(Attendee / Absentee / Online / Telephone Bidding)

Please circle your bidding method above.

<input type="checkbox"/>	<input type="checkbox"/>	<input type="checkbox"/>	<input type="checkbox"/>
--------------------------	--------------------------	--------------------------	--------------------------

Paddle number (for office use only)

General Notice: This sale will be conducted in accordance with Bonhams Conditions of Sale, and your bidding and buying at the sale will be governed by such terms and conditions. Please read the Conditions of Sale in conjunction with the Buyer's Guide relating to this sale and other published notices and terms relating to bidding. Payment by personal or business check may result in your property not being released until purchase funds clear our bank. Checks must be drawn on a U.S. bank.

Notice to Absentee Bidders: In the table below, please provide details of the lots on which you wish to place bids at least 24 hours prior to the sale. Bids will be rounded down to the nearest increment. Please refer to the Buyer's Guide in the catalog for further information relating to instructions to Bonhams to execute absentee bids on your behalf. Bonhams will endeavor to execute bids on your behalf but will not be liable for any errors or non-executed bids.

Notice to First Time Bidders: New clients are requested to provide photographic proof of ID - passport, driving license, ID card, together with proof of address - utility bill, bank or credit card statement etc. Corporate clients should also provide a copy of their articles of association / company registration documents, together with a letter authorizing the individual to bid on the company's behalf. Failure to provide this may result in your bids not being processed. For higher value lots you may also be asked to provide a bankers reference.

Notice to online bidders: If you have forgotten your username and password for www.bonhams.com, please contact Client Services.

If successful

I will collect the purchases myself ☐
Please contact me with a shipping quote (if applicable) ☐
I will arrange a third party to collect my purchase(s) ☐

Please email or fax the completed Registration Form and requested information to:

Bonhams Client Services Department
7601 W. Sunset Blvd
Los Angeles, California 90046
Tel +1 (323) 850 7500
Fax +1 (323) 850 6090
bids.us@bonhams.com

Bonhams

Sale title: European Style: Furniture and Decorative Arts Through The Centuries		Sale date: Tuesday October 20, 2020
Sale no. 26164		Sale venue: Los Angeles
General Bid Increments: \$10 - 200by 10s \$200 - 500by 20 / 50 / 80s \$500 - 1,000by 50s \$1,000 - 2,000by 100s \$2,000 - 5,000by 200 / 500 / 800s \$5,000 - 10,000by 500s \$10,000 - 20,000by 1,000s \$20,000 - 50,000by 2,000 / 5,000 / 8,000s \$50,000 - 100,000by 5,000s \$100,000 - 200,000by 10,000s above \$200,000at the auctioneer's discretion The auctioneer has discretion to split any bid at any time.		
Customer Number		Title
First Name		Last Name
Company name (to be invoiced if applicable)		
Address		
City		County / State
Post / Zip code		Country
Telephone mobile		Telephone daytime
Telephone evening		Fax
Telephone bidders: indicate primary and secondary contact numbers by writing ① or ② next to the telephone number.		
E-mail (in capitals) _____ By providing your email address above, you authorize Bonhams to send you marketing materials and news concerning Bonhams and partner organizations. Bonhams does not sell or trade email addresses.		
I am registering to bid as a private client <input type="checkbox"/>		I am registering to bid as a trade client <input type="checkbox"/>
Resale: please enter your resale license number here _____ We may contact you for additional information.		

SHIPPING	
Shipping Address (if different than above):	
Address: _____	Country: _____
City: _____	Post/ZIP code: _____

Please note that all telephone calls are recorded.

Type of bid (A-Absentee, T-Telephone)	Lot no.	Brief description (In the event of any discrepancy, lot number and not lot description will govern.) If you are bidding online there is no need to complete this section.	MAX bid in US\$ (excluding premium and applicable tax) Emergency bid for telephone bidders only*

You instruct us to execute each absentee bid up to the corresponding bid amount indicated above.

* Emergency Bid: A maximum bid (exclusive of Buyer's Premium and tax) to be executed by Bonhams only if we are unable to contact you by telephone or should the connection be lost during bidding.

BY SIGNING THIS FORM YOU AGREE THAT YOU HAVE READ AND UNDERSTAND OUR CONDITIONS OF SALE AND SHALL BE LEGALLY BOUND BY THEM, AND YOU AGREE TO PAY THE BUYER'S PREMIUM, ANY APPLICABLE TAXES, AND ANY OTHER CHARGES MENTIONED IN THE BUYER'S GUIDE OR CONDITIONS OF SALE. THIS AFFECTS YOUR LEGAL RIGHTS.

Your signature: _____	Date: _____
-----------------------	-------------





Bonhams
7601 W. Sunset Boulevard
Los Angeles, California 90046

+1 323 850 7500
bonhams.com

AUCTIONEERS SINCE 1793