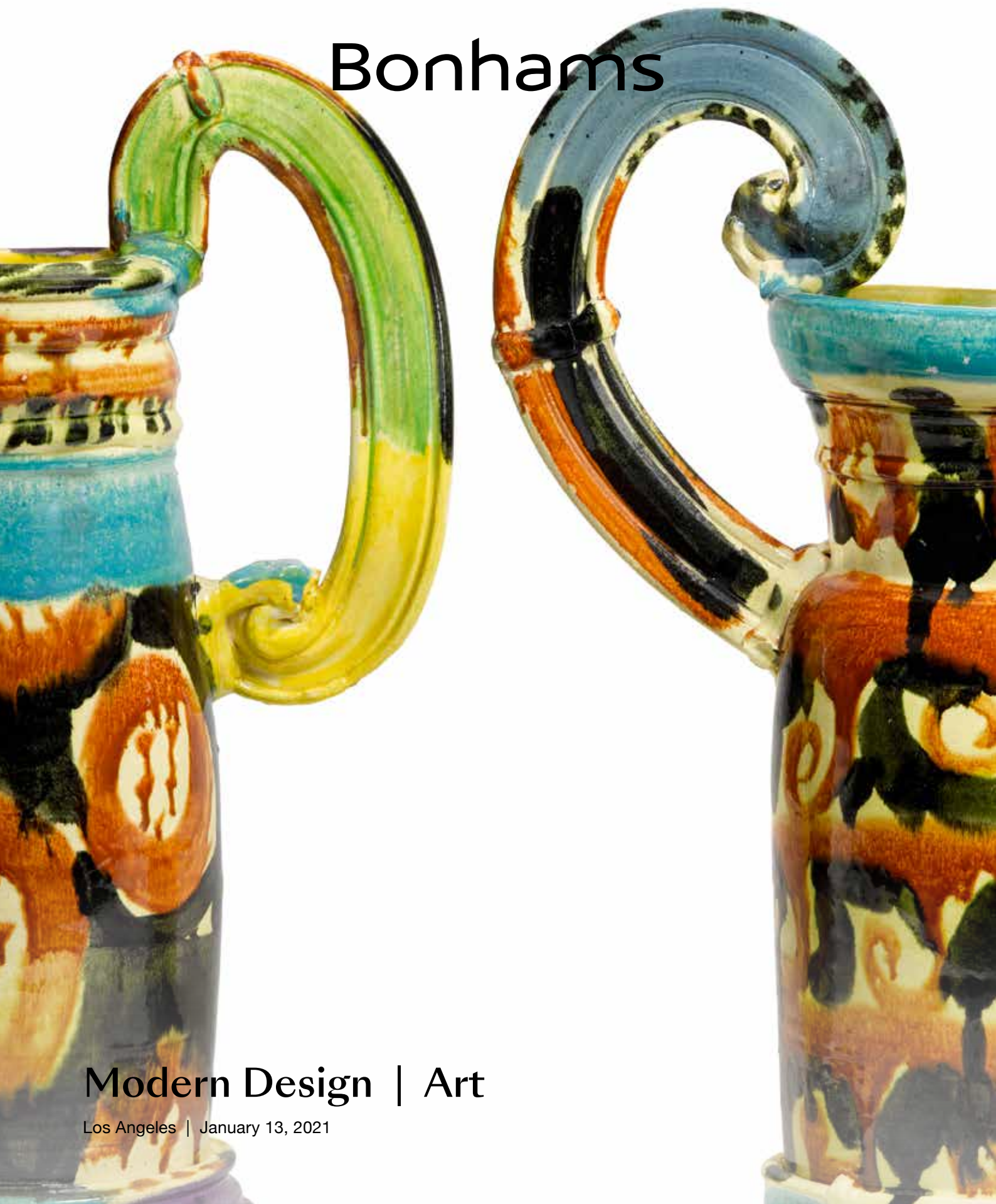
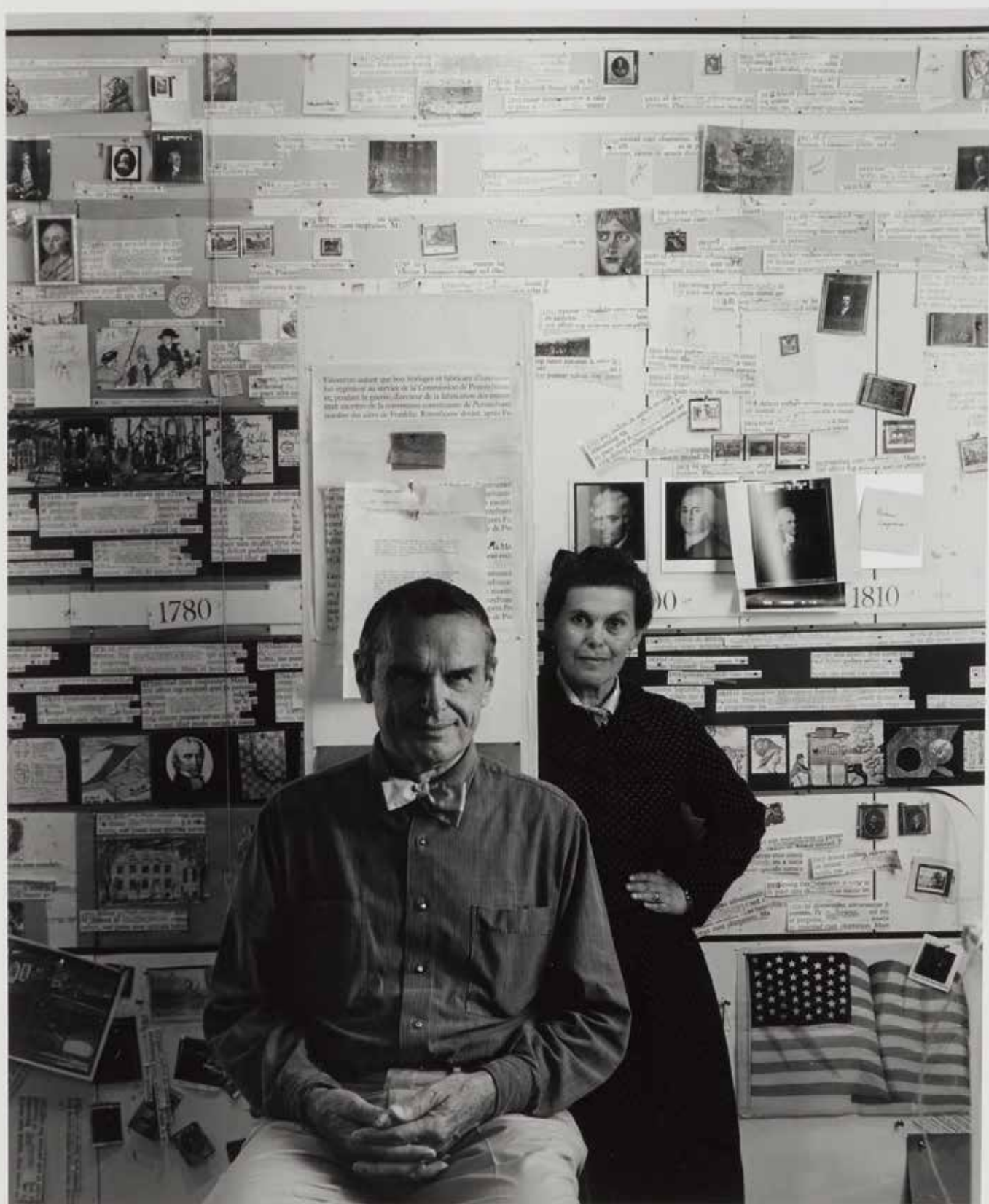


# Bonhams



Modern Design | Art

Los Angeles | January 13, 2021



Charles and Virginia DeLoe, DeLoe Collection, 1974

Charles DeLoe

# Modern Design | Art

Los Angeles | Wednesday, January 13, 2021 at 11am

---

## BONHAMS

7601 W. Sunset Boulevard  
Los Angeles CA 90046  
[bonhams.com](http://bonhams.com)

## SALE NUMBER

26712  
Lots 1 - 178

## AUCTION INFORMATION

Joseph Francaviglia  
57BSBH07675-DCA

Paul Song  
57BSBGP5476-DCA

Bonhams & Butterfields  
Auctioneers Corp.  
2077070-DCA

**CATALOG:** \$45

## ILLUSTRATIONS

Front Cover: lot 134  
Inside Front Cover: lot 92  
Inside Back Cover: lot 154  
Rear Cover: lot 79

## PREVIEW

Saturday January 9, 12pm-5pm  
Sunday January 10, 12pm-5pm  
Monday January 11, 10am-5pm  
Tuesday January 12, 10am-5pm

## INQUIRIES

### Los Angeles

Jason Stein  
Director  
[Jason.stein@bonhams.com](mailto:Jason.stein@bonhams.com)  
+1 (323) 436 5466

David Trujillo  
Specialist  
[david.trujillo@bonhams.com](mailto:david.trujillo@bonhams.com)  
+1 (323) 436-5405

Katherine Miller  
Business Administrator  
+1 (323) 436-5445  
[Katherine.miller@bonhams.com](mailto:Katherine.miller@bonhams.com)

### New York

Benjamin Walker  
Global Head of Department  
+1 (212) 710 1306  
[benjamin.walker@bonhams.com](mailto:benjamin.walker@bonhams.com)

Dan Tolson  
International Director  
+1 (917) 206 1611  
[Dan.tolson@bonhams.com](mailto:Dan.tolson@bonhams.com)

Misha Sylver  
Business Administrator  
+1 (917) 206 1614  
[misha.sylver@bonhams.com](mailto:misha.sylver@bonhams.com)

## BIDS

Register to bid online by visiting  
[www.bonhams.com/26712](http://www.bonhams.com/26712)

Alternatively, contact our Client  
Services department at:  
[bids.us@bonhams.com](mailto:bids.us@bonhams.com)  
+1 (323) 850 7500

## IMPORTANT NOTICES

Please note that all customers, irrespective of any previous activity with Bonhams, are required to have proof of identity when submitting bids. Failure to do this may result in your bid not being processed.

For absentee and telephone bids we require a completed Bidder Registration Form in advance of the sale. The form can be found at the back of every catalogue and on our website at [www.bonhams.com](http://www.bonhams.com)

and should be returned by email to the specialist department or to the Client Services department at [bids.us@bonhams.com](mailto:bids.us@bonhams.com). Please note we cannot guarantee bids within 24 hours of the sale.

Lots marked "W" are oversized and therefore your purchases may be subject to alternative shipping and storage methods. For further information, please refer to the Oversized Lots page.

## COVID-19 SAFETY STANDARDS

Bonhams' galleries are currently subject to government restrictions and arrangements may be subject to change.

**Preview:** Lots will be made available for in-person viewing by appointment only. Please contact the specialist department on [Design.us@bonhams.com](mailto:Design.us@bonhams.com) to arrange an appointment before visiting our galleries. In accordance with Covid-19 guidelines, it is mandatory that you wear a face mask and observe social distancing at all times. Additional lot information and photographs are available from the specialist department upon request.

**Bidding:** We are unable to offer in-person bidding for this auction.

**Payment, Collections & Shipping:** We strongly encourage contactless payment of invoices prior to collection via wire transfer or credit card through your MyBonhams account. In-person or third-party collections from our galleries are scheduled in advance with our Client Services team.

## Bonhams

© 2020 Bonhams & Butterfields Auctioneers Corp.  
All rights reserved.



# Specialists for this auction

---

## Los Angeles



Jason Stein  
**Director**

David Trujillo  
**Specialist**

Katherine Miller  
**Business Administrator**

## New York



Benjamin Walker  
**Global Head of Department**

Dan Tolson  
**International Director**

Misha Sylver  
**Business Administrator**

## London



Marcus McDonald  
**Department Director**

Gemma Sanders  
**Head of Department**

## Milan



## Paris



Benedetta Alpini  
**Specialist**

Catherine Yaiche  
**Director**





1

1

**TIFFANY STUDIOS (1899-1930)**

Jeweled Turtleback Desk Lamp

circa 1910

Favrile glass, patinated bronze, stamped 'Tiffany Studios New York' with Tiffany Glass Decorating Co. logo and numbered 'D801'

height 14in (36cm); width 8in (20cm); depth 6in (15cm)

**\$8,000 - 12,000**



2

2

**TIFFANY STUDIOS (1899-1930)**

Desk Lamp

circa 1910

Favrile glass, patinated bronze, stamped '7823 Tiffany Studios New York'

height 14in (36cm); width 9in (23cm); depth 6in (15cm)

**\$4,000 - 6,000**



3

3 W

**DANIEL BURNHAM (1846-1912)**

Mosaic Plaque

1896

from the Fisher Building, Chicago, glass tiles, plaster  
21 x 58 1/2 x 1in (53 x 149 x 3cm)

**\$1,500 - 2,500**

The offered lot was originally installed in the lobby ceiling of the Fisher Building.

**Provenance**

Fisher Building, Chicago

Collection of Dr. Brian and Becky Hinrichs

Wright, Chicago, 'Important Design', 15 December 2011, Lot 377

Estate of Gerard L. Cafesjian

4 W

**GUSTAV STICKLEY (1858-1942)**

Two Drawer Library Table

circa 1912

oak, leather, copper, nail heads, with Gustav Stickley mark in drawer  
height 30in (76cm); width 54 1/2in (138.5cm); depth 32in (81cm)

**\$3,000 - 5,000**



4



6

5 W

**A. KIMBEL & J. CABUS (FOUNDED 1862)**

Modern Gothic Hall Stand and Settle

circa 1875

carved walnut, brass, maker's paper label

*height 75in (191cm); width 55in (140cm); depth 20in (51cm)*

**\$1,500 - 2,000**

The New York firm of Kimbel & Cabus founded in 1862 worked extensively in the Modern Gothic style during the 1870s. Inspired by Charles Eastlake and the British Design Reform movement, they exhibited at the 1876 Philadelphia Centennial Exhibition to great acclaim.

6

**TIFFANY STUDIOS (1899-1930)**

Leaf and Vine Shade

circa 1910

on an E. Miller lamp base, leaded glass, patinated bronze, marked

'232 ML CO' to underside of base

*diameter of shade 16in (41cm); height of base 25in (63cm)*

**\$3,500 - 4,500**

**Provenance**

Christie's, New York, '20th Century Decorative Arts and Design',  
10 March 2004, Lot 374

Estate of Gerard L. Cafesjian



5





7

7

# **TIFFANY STUDIOS (1899-1930)**

Daffodil Table Lamp

circa 1905

leaded glass, patinated bronze, shade with bronze tag stamped

'TIFFANY STUDIOS NEW YORK', base stamped '28619

TIFFANY STUDIOS NEW YORK' with maker's monogram

height 25 1/2in (64.7cm); diameter of shade 20 1/4in (51.4cm)

**\$20,000 - 30,000**

## **Provenance**

Private Collection, Santa Barbara, California

8

# **FRANCISCO ZÚÑIGA (1912-1998)**

Mujer de pie con rebozo

1971

patinated bronze, signed 'Zúñiga' and dated along the base,

edition III/VI

height 23 3/4in (60.3cm); width 9 1/2in (24.2cm); depth 6 3/4in

(17.2cm)

**\$15,000 - 25,000**

## **Provenance**

Pasquale Jannetti Art Galleries, San Francisco

Private Collection, California

## **Literature**

Francisco Zúñiga and Ariel Zúñiga, 'Francisco Zúñiga:

Catálogo razonado volumen I, escultura 1923-1993', Albedrío

& Fundación Zúñiga Laborde, 1999, p. 364, no. 618 (another

edition illustrated).



8



9

9

**FREDERICK L. ROEHRIG (1857-1948)**

Pair of Table Lamps

circa 1905

wrought iron, mica, unmarked

height overall 15 1/2in (39.3cm); width of shade 6 3/4in (17.1cm)

**\$2,000 - 3,000**

**Provenance:**

Arthur Jerome Eddy House, Pasadena, California

Collection of Robert Winter, Pasadena, California

**Literature:**

Timothy J. Andersen, Eudora M. Moore and Robert W. Winter, eds., *California Design 1910*, Layton, UT, p. 85



10

10

**RALPH CAHOON (1910-1982)**

Untitled (Happy Birthday, LOV, C.S.R.)

pencil on paper, initialed 'R.C.' lower right

9 3/4 x 5 3/4in (24.8 x 14cm)

**\$1,000 - 1,500**

**Provenance**

Estate of Gerard L. Cafesjian



11

11

**FRENCH**

Trunk

early 20th century

wood, metal, leather, studs, stenciled 'B' on each side, the

top opening to reveal a compartmentalized interior

height 18in (46cm); width 33in (84cm); depth 19in (48.5cm)

**\$300 - 500**

12

**PAUL DACHSEL (ACTIVE EARLY 20TH CENTURY)**

Pine Vase

circa 1904

matte glazed earthenware with glazed applied pinecone decorations, stamped indistinctly on underside  
*height 5 1/2in (14cm); diameter 5 1/2in (14cm)*

**\$500 - 700**

**Provenance**

Private Collection, Florida



12



13

13

**GOYARD (ESTABLISHED 1853)**

Trunk

canvas, brass, wood, with Malles Goyard plaque  
*height 12in (30cm); length 43in (110cm); width 22in (56cm)*

**\$1,000 - 1,500**

14

**LOUIS VUITTON (ESTABLISHED 1854)**

Steamer Trunk

patterned canvas, wooden slats, leather, monogrammed 'GHB'

*height 27in (69cm); width 39in (100cm); depth 23in (59cm)*

**\$3,000 - 5,000**



14



15

15 W

**ROYCROFT (FOUNDED 1895)**

Circular Dining Table

circa 1905

oak, signed with the firm's orb mark

height 30in (76cm); diameter 60in (153cm)

**\$3,000 - 5,000**

**Provenance**

Private Collection, by family descent

16 W

**GUSTAV STICKLEY (1858-1942)**

Set of Seven Dining Chairs

circa 1905

model 306, oak, upholstered, branded with Gustav

Stickley mark

height of armchair 38in (97cm); width 26 1/2in (67cm);

depth 23in (59cm); height of side chairs 37 1/2in (95cm);

width 19in (48cm); depth 17 1/2in (44.5cm)

**\$2,000 - 4,000**

**Provenance**

Private Collection, by family descent



16





17

17  
**NEWCOMB COLLEGE POTTERY (1895-1940)**

Vase  
1930  
potter Jonathan Hunt, decorated by Sadie Irvine, matte-glazed earthenware, with Newcomb College mark, artist's monogram, numbered '131' and 'SO 18'  
*height 11in (28cm); diameter 5in (13cm)*

**\$2,000 - 3,000**

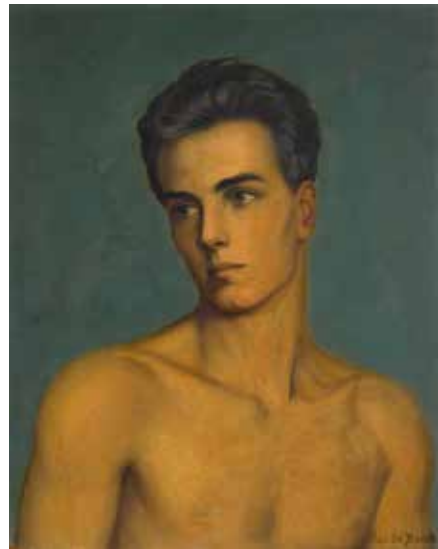
18  
**CLAUDE BUCK (1890-1970)**

Self-Portrait  
1925  
oil on Masonite, signed 'Claude Buck' lower right  
*20 x 16in (51 x 41cm)*

**\$3,000 - 5,000**

**Provenance**

Gift of the artist to his son, Robert Buck  
Private Collection, by family descent



18

19 W  
**ROYCROFT (FOUNDED 1895)**

Rare Sideboard  
1906-1915  
oak, leaded glass, copper, signed with the firm's orb mark  
*height 58 1/2in (149cm); width 63in (160cm); depth 24 3/4in (63cm)*

**\$3,500 - 4,500**

**Provenance**

Private Collection, by family descent

20 W  
**ROYCROFT (FOUNDED 1895)**

Rare China Cabinet  
1906-1915  
oak, leaded glass, copper, signed with the firm's orb mark  
*height 55 1/2in (141cm); width 51in (130cm); depth 22 1/4in (56.5cm)*

**\$6,000 - 8,000**

**Provenance**

Private Collection, by family descent



19



20



21

21 W

**JOSEF HOFFMANN (1870-1956)**

Dining Table and Six Chairs

circa 1905

for J & J Kohn, mahogany, chairs stamped 'J & J Kohn'

height of chairs 36 1/2in (93cm); width 16in (31cm); depth 16 1/2in (32cm); height of dining table 29 1/2in (74cm); width closed 55in (140cm); depth 44in (112cm)

**\$2,000 - 3,000**

**To be sold without reserve**

**Provenance**

Sotheby's, Monaco, 'Arts Décoratifs du XXe Siècle', 19 October 1986, Lot 265, purchased FRF 22,200.

22 W

**JOSEF HOFFMANN (1870-1956)**

Grand Buffet

circa 1905

for J & J Kohn, mahogany, burlwood, with plate marked 'J.J. Kohn 109 rue du Faubourg Saint Antoine Paris'

height 86 5/8in (220cm); width 55 1/2in (141cm); depth 25 9/16in (65cm)

**\$1,000 - 1,500**

**To be sold without reserve**

**Provenance**

Sotheby's, Monaco, 'Arts Décoratifs du XXe Siècle', 19 October 1986, Lot 266, FRF 22,200.



22

23 W

**JOSEF HOFFMANN (1870-1956)**

Three Piece Parlor Set

circa 1900

for Thonet, bentwood, upholstered, settee stamped 'Thonet'

height 30 1/2in (77cm); width 46in (117cm); depth 21in (54cm)

**\$1,500 - 2,000**



23



24

24

**ERTÉ (ROMAIN DE TIRTOFF) (1892-1990)**

Three Costume Designs for 'Venice in the 18th Century'  
1919

for the Folies Bergère, gouache with silver overlay, each signed 'Erté' lower right, titled, dated and numbered verso  
each 12 3/4 x 8 3/8in (32.4 x 21.3cm)

**\$4,000 - 6,000**

**Provenance**

Collection of Ruben Torres

**Exhibited**

McAllen, Texas, McAllen International Museum, 'Erte and His Contemporaries - Costume Design for the Early Twentieth Century Music Hall in Paris,' September 3 - November 30, 1988

**Literature**

L. Jacobson and C. Spencer, 'Erte and His Contemporaries, Costume Designs for the Early Twentieth Century Music Hall in Paris', McAllen International Museum, 1988, p. 24-25 (illustrated)

25

**LOETZ (1890-1920)**

Powder Box with Cover

1900

sterling silver, iridescent glass, monogrammed with initials, inscribed '1900', stamped 'STERLING'  
height 3in (8cm); diameter 4 1/2in (11cm)

**\$600 - 800**



25



26

26

**LOETZ (1890-1920)**

Vase

circa 1900

silver overlay and jeweled, iridescent glass, *together with* an Art Nouveau silver overlay porcelain vase  
height of Loetz vase 4 1/2in (11cm); height of Art Nouveau vase 9 1/2in

**\$1,000 - 1,500**



27

27

**BACCARAT**

Myrbahia Scent Bottle

designed 1913

clear and frosted glass, acid stenciled 'BACCARAT' with maker's monogram

height 5 3/4in (14.6cm)

**\$600 - 800**

**Provenance**

Estate of Gerard L. Cafesjian



28

28

**EDMOND LACHENAL (1855-1900)**

Coupe

circa 1900

enameled ceramic, with molded signature 'E. LACHENAL', signed 'E. LACHENAL' in glaze on the reverse and numbered '7918'

diameter 10 1/4in (26cm)

**\$800 - 1,200**

**Provenance**

Sotheby's, Paris, 'Collection de Ceramiques Francaises, Verreries, Tableaux, Documentations, Provenant de la Villa Clara Schuman', 16 December 2005, Lot 233  
Estate of Gerard L. Cafesjian





29

29

**ÉMILE GALLÉ (1846-1904)**

Cat

1880s

glazed earthenware, glass, signed in black 'Galle Nancy' along base, together with a similar Galle style cat  
height 13in (33cm); width 7in (18cm); depth 4 3/4in (12cm)

**\$1,000 - 1,500**

**Provenance**

Estate of Gerard L. Cafesjian

30

**ZSOLNAY (FOUNDED 1853)**

Symbolist Cat

circa 1908

eosin glazed earthenware, with the firm's mark on interior of underside

height 11in (28cm); width 5in (13cm); depth 6in (15cm)

**\$1,000 - 1,500**



30



31

31

**RENÉ LALIQUE (1860-1945)**

Camées Vase

Marcilhac 891, designed 1923

frosted and clear glass, impressed 'R. LALIQUE' to side of vase, incised 'France' on underside

height 10in (25.4cm); diameter 6 1/4in (15.8cm)

**\$800 - 1,200**

32

**RENÉ LALIQUE (1860-1945)**

Sophora Vase

Marcilhac 977, designed in 1926

frosted and polished glass, molded 'R. Lalique' and etched 'R. Lalique France'

height 10 1/2in (27cm)

**\$1,000 - 1,500**



32



33

33

**CLÉMENT NAUNY (1900-1969)**

Pair of Table Lamps

circa 1930

for Maison Desny, chromed metal, glass, apparently unmarked

height 15 3/4in (40cm); diameter 9 1/4in (23.5cm)

**\$1,500 - 2,000**

**Provenance**

Parisian Collection

34 W

**PAUL ETIENNE SAÏN (1904-1995); ATTRIBUTED TO**

Four Panel Floor Screen

circa 1930

lacquered, gold leaf and silvered wood

height 71in (180cm); width 79 1/2in (202cm); depth 3/4in (2cm)

**\$2,500 - 3,500**

**Provenance**

Quittenbaum, Munich, 'Vintage and Antique Furniture', 13 November 2019, Lot 691

35

**AUGUSTE LEROY & CIE. (ACTIVE 1912-1935)**

Octagonal Covered Tureen on Stand

circa 1912

950 silver, Bakelite, stamped with three French Minerva

hallmarks and two diamond maker's mark

height 10in (26cm); width 22in (56cm); depth 14 1/2in (37cm)

**\$4,000 - 6,000**



34



35



36

36

**FERDINAND PREISS (1892-1943)**

Hoop Girl and Sonny Boy

circa 1930

patinated bronze, red onyx, each stamped 'F. Preiss 1'  
height 9 and 9 1/4in (23 and 23.4cm); width 5 1/8in  
(13.5cm); depth 3 1/4in (8.5cm)

**\$2,000 - 3,000**

37

No lot



38

38

**PAUL HOWARD MANSHIP (1885-1966)**

Two Medals

1946

from the Zodiac Series, patinated bronze, the Taurus medal  
with molded signature '1946 © Paul Manship' and the Libra  
medal with molded signature 'Paul Manship © 1946'  
diameter 6in (15.2cm)

**\$1,000 - 1,500**

**Provenance**

Bonhams, Los Angeles, '20th Century Decorative Arts', 1  
October 2012, Lots 1106 and 1107  
Estate of Gerard L. Cafesjian



39

**MARCEL BOURAINE (1886-1948)**

Table Lamp

circa 1925

patinated and gilt bronze, marble and carved onyx, inscribed 'M. BOURAINE' and stamped '1 MADE IN FRANCE'

height 25 3/4in (65.5cm); width 12in (30.5cm); depth 6in (15cm)

**\$8,000 - 12,000**

The present lot has been in the same private collection since 1975.



39

40 W

**PAUL FOLLOT (1877-1941)**

Side Chair

circa 1912

carved walnut

height 36 1/2in (92cm); width 19in (48cm); depth 17 1/2in (44cm)

**\$1,000 - 1,500**

**To be sold without reserve**

**Provenance**

Sotheby's, New York, '20th Century Decorative Arts', 19 March 1988, Lot 392, purchased \$4,286.

**Literature**

'Art et Décoration', November 1912, for an illustration of virtually identical chairs with slight variations to the splats.



40



41

41 W

**ELSIE DE WOLFE (1865-1950)**

Custom Console Table

1936

mirrored glass and copper

height 31in (78.7cm); width 55in (139.7cm); depth 18in (45.7cm)

**\$1,500 - 2,500**

The present lot was custom designed by Elsie de Wolfe (Lady Mendl) for the Beverly Hills, California home of Countess Dorothy Di Frasso.

42

**OLGA COSTA (1913-1994)**

Pescado plateado

1965

tempera on rice paper, signed 'Olga Costa' and dated

lower left, stamped with artist's mark lower right

7 3/4 x 11 1/4in (19.7 x 28.6cm)

**\$800 - 1,200**

This work is accompanied by a certificate of authenticity signed by José Chávez Morado, husband of the artist, dated April 9, 1997.



42



43

43 W

**GILBERT POILLERAT (1902-1988), ATTRIBUTED TO**

Pair of Open Armchairs

1940s

wrought iron, faux patent leather

height 41in (104cm); width 21in (53.5cm); depth 18in (46cm)

**\$1,500 - 2,000**



44

44 W

**JACQUES DUVAL BRASSEUR (BORN 1934), STYLE OF**

Illuminated Coffee Table

circa 1975

brass, agate, steel, smoked glass

height 13 1/4in (34cm); width 49in (124cm); depth 28 1/2in (72cm)

**\$4,000 - 6,000**

**Provenance**

Wright, Chicago, 'Living Contemporary', 27 September 2012, Lot 187

Estate of Gerard L. Cafesjian

45

**CHAIM GROSS (1902-1991)**

Balancing

1935

oxidized bronze, inscribed with artist's signature and insignia

height 34in (86.3cm); width 6 1/4in (15.8cm); depth 8 1/2in (21.5cm)

**\$6,000 - 8,000**

**Provenance**

Chaim Gross

Private Collection, Miami Beach, Florida

Private Collection, Florida

Acquired directly from the above

**Literature**

Frank Getlein, 'Chaim Gross', H.N. Abrams, New York, 1974, p. 35 and 57

According to the Gross Foundation, 'Balancing' was cast in 1937 in an edition of three polished bronzes. One of these works was in the collection of The Smithsonian.



45



46

46 W

**T.H. ROBSJOHN-GIBBINGS (1905-1976)**

Chaise Longue

1950s

for Widdicomb, bleached walnut, upholstery

height 34in (87cm); width 24 3/4in (63cm); length 59in (150cm)

**\$3,000 - 5,000**



47

47

**TRUDY BENSON (BORN 1985)**

Fuzzy Rug

2009

oil, acrylic and enamel on canvas, signed, titled and dated

'Trudy Benson "Fuzzy Rug" 2009' on the reverse

36 x 40in (91.4 x 101.6cm)

**\$2,000 - 3,000**

**Provenance**

The Hole, New York

Acquired directly from the above by the present owner



48 W

**ISABEL YELLIN (BORN 1987)**

Backless

2014

acrylic on cotton, mesh, vinyl and canvas collage with metal clips, signed and dated 'Isabel Yellin 2014' on the reverse  
78 1/2 x 49in (199.3 x 124.4cm)

**\$2,000 - 3,000**

**Provenance**

Vigo Gallery, London

Acquired directly from the above by the present owner

49 W

**T.H. ROBSJOHN-GIBBINGS (1905-1976); MANNER OF**

Set of Ten Klismos Chairs

walnut, leather

height 35in (89cm); width 20 3/4in (53cm); depth 28in (71cm)

**\$4,000 - 6,000**

The design of this chair model is a modernist interpretation of seating from Ancient Greece. T.H. Robsjohn-Gibbings created a similar chair style in 1961 for Saridis of Athens.



48



49

(five of ten chairs illustrated)



50



51



52



53

50 W

**MILO BAUGHMAN (1923-2003)**

Curved Sectional Sofa  
designed 1970s  
for Thayer Coggin, cotton upholstery,  
brass, with manufacturer's labels on  
underside, in three sections  
*height 32 1/2in (83cm); length 154in  
(391.2cm); depth 85 1/2in (217.2cm)*

**\$2,500 - 3,500**

**Provenance**

Private Collection, Los Angeles

51

**MAX SAUZE (BORN 1933)**

Orion Chandelier  
designed 1967  
gold tone aluminum, steel, signed with  
maker's label on interior 'MAX SAUZE  
FRANCE'  
*height 15in (38cm); diameter 20in  
(51cm)*

**\$1,500 - 2,000**

52

**RICHARD RUDICH (BORN 1945)**

Tsar and Prince No. 4  
1984  
painted and glazed ceramic  
*18 x 11 1/2in (46 x 29cm)*

**\$800 - 1,200**

**Provenance**

O.K. Harris, New York  
Christie's, New York, 'Interiors', 11  
January 2011, Lot 301  
Estate of Gerard L. Cafesjian

53 W

**ALLEN JONES (BORN 1937);  
MANNER OF**

Figural Chair  
circa 1969  
painted fiberglass  
*height 34 1/2in (88cm); width 25in  
(64cm); depth 30in (76cm)*

**\$1,000 - 2,000**

**Provenance**

Christie's, London, 'Modern Design', 12  
November 1997, Lot 255  
Estate of Gerard L. Cafesjian



54

54

**IRA YEAGER (BORN 1938)**

Untitled (Tiger)

oil on canvas, signed 'Ira Yeager' lower left  
diameter 48 3/4in (123.8cm)

**\$3,000 - 5,000**

55 W

**ARTIST UNKNOWN (20TH CENTURY)**

Assemblage

circa 1968

oil pans, mixed media

height 30 1/2in (77.4cm); width 53 3/4in (136.5cm); 9 1/4in (23.4cm)

**\$1,000 - 1,500**

The offered lot was acquired at a Watts, California event in 1968 by the family of the present owner.



55



56



56

**TONY DUQUETTE (1914-1999)**

Pair of Sunburst Mirrors  
design introduced 1999  
in the manner of Gilbert Poillerat, gilt and painted metal,  
hubcaps

*height 32 3/4in (83.3cm); width 23in (58.5cm); depth 2  
1/2 to 3 1/2in (5 to 9cm)*

**\$2,000 - 3,000**

**Literature**

Hutton Wilkinson, 'More Is More', Abrams Publishers,  
2009, p. 334 and p. 359 for illustrations of similar  
mirrors in-situ at Duquette's Beverly Hills 'Dawnridge'  
residence

57 W

**CEDRIC HARTMAN (BORN 1929)**

Pair of AE Small Tables

designed 1973

polished nickel, nero marquina marble, each stamped  
on the underside 'CEDRIC HARTMAN MADE IN USA'  
with facsimile signature and serial numbers

*height 23in (58.4cm); diameter 17in (43.1cm)*

**\$1,200 - 1,800**



57





58

58

**MICHAEL KENNA (BORN 1953)**

Group of Three Photographs

1990-92

gelatin silver prints, each signed 'Michael Kenna' and dated lower right, from an edition of 45, comprising:

'Courtyard, Study 1, San Francisco, CA'

'Log and Plane, Boca Raton, Florida'

'Factory Forms, Senlis, France'

each 7 1/2 x 7 1/2 in (19 x 19 cm)

**\$1,500 - 2,500**

59

**BENITO VILIANO TARABELLA (1937-2003)**

Feuille Oiseau

1996

carrara marble, carved 'Tarabella'

height 42 1/2 in (108 cm); diameter of base 9 in (23 cm)

**\$1,500 - 2,000**

**Provenance**

Parisian Collection

The offered lot is accompanied by a certificate of authenticity dated April 2014.



59



60

60 W

**JOHN DICKINSON (1920-1982)**

Prototype Wall Mirror

1970s

steel, brass, beveled glass

height 60in (152.5); width 24in (61cm); depth 1 1/2in (4.3cm)

**\$1,500 - 2,000**

61

**JOHAN ROHDE (1856-1935)**

Cosmos Coffee Pot

designed first quarter 20th century

executed post 1945, for Georg Jensen, sterling silver, ebor wood, with maker's and designer's hallmarks, stamped 'DE STERLING 45 C'

height 10 3/4in (27.3cm); width 5 3/4in (14.6cm);

depth 8 1/4in (20.9cm)

**\$1,000 - 1,500**

**Provenance**

Estate of Harry and Ruth Wechsler



61



62

62 W

**MATT SHERIDAN SMITH (BORN 1980)**

Pattern Portrait (cyclist)

2014

acrylic gel medium transfer and paper on canvas, signed and dated 'MSS 2014' on the overlap

60 x 42in (152.4 x 106.6cm)

**\$1,000 - 2,000**

**Provenance**

R&R Gallery

Acquired from the above

Private Collection, California

63 W

**PETER WEGNER (BORN 1963)**

Silver Subtraction

2010

acrylic with mica on acrylic panel, signed, titled and dated on the reverse

69 x 46in (175 x 117cm)

**\$1,000 - 2,000**

**Provenance**

William Griffin Gallery, Santa Monica, California

**Exhibited**

William Griffin Gallery, Santa Monica, California, 'Peter Wegner: Absence of Field', March 13-May 15, 2010



63



64

64 W

**WILLY RIZZO (1928-2013)**

Games Table with Associated Chess Set

circa 1970

chromed metal, brass, leather, silvered bronze, resin, signed  
height 29 3/4in (75.5cm); width 33 1/4in (84.5cm); depth 33 1/4in (84.5cm)

**\$2,500 - 3,500**

**Provenance**

Parisian Collection

65 W

**WILLY RIZZO (1928-2013)**

Group of Four Games Chairs

circa 1970

chromed metal, leather, signed

height 34in (86cm); width 17in (43cm); depth 19in (48cm)

**\$1,500 - 2,000**

**Provenance**

Parisian Collection



65



66

66

**ANTHONY REDMILE (ACTIVE LATE 20TH CENTURY)**

Pair of Frog Candlesticks and Table Box

circa 1970

ostrich egg, silverplate, ebonized wood, paint decorated wood, each stamped 'redmile London', the underside of the box with the maker's label, *together with* an additional egg

height 17in (43.1cm); width 9 1/4in (23.4cm); depth 4 1/2in (11.4cm)

**\$1,500 - 2,500**

**Provenance**

Ideas Incorporated, San Diego, California

Private Collection, Sacramento, California

67 W

**MAISON JANSEN (FOUNDED 1880)**

Pair of Console Tables

circa 1940

sycamore

height 34 1/4in (87cm); width 47in (119.5cm); depth 14 3/4in (37.5cm)

**\$5,000 - 7,000**

Designed and executed for the home of Jack Warner, Villa Aujourd'hui, Cap D'Antibes, 1938.

**Provenance**

Galerie Chastel Marechal, Paris

Barry Friedman, New York

Private Collection, Dallas, Texas



67



68

**JEAN ARP (1887-1966)**

Untitled (Figure Study)

pencil on paper, signed 'ARP' lower left

12 1/2 x 6 3/4 in (31.8 x 17.1 cm)

**\$2,500 - 3,500**

**Provenance**

Artcurial, Paris, 22 October 2007, Lot 491A

Christie's, New York, 'Interiors', 5 February 2013, Lot 11

Acquired from the above by the present owner



68

69

**PAUL BELVOIR (BORN 1963)**

Pair of Candlesticks

designed 2007

rose quartz, sterling silver, each hallmarked and stamped 'PGB'

height 15 1/4 in (38.7 cm); width 5 3/4 in (14.6 cm); depth 5 3/4 in (14.6 cm)

**\$3,000 - 5,000**

**Provenance**

Bonhams, New York, 'Adventures in Style: Hamish Bowles &

Gordon Watson', 13 November 2012, Lot 67

Estate of Gerard L. Cafesjian



69



70



70 W

**GUILLERME ET CHAMBRON (FOUNDED 1949)**

Pair of 'Jose' Lounge Chairs

1950s

Edition Votre Maison, limed oak, textured upholstery  
height 33in (84cm); width 29in (74cm); depth 25in (64cm)

**\$1,000 - 1,500**



71



71

**RAUL CORONEL (BORN 1926)**

Pair of Table Lamps

late 1950s

glazed earthenware, apparently unmarked  
heights 26 1/4 and 26 1/2in (66.6 and 67.3cm); widths of bases  
10in (25.4cm); diameters of shades 18 1/2in (46.9cm)

**\$800 - 1,200**

**Provenance**

Estate of Edwin and Cherie Silver

72 W

**PAUL MCCOBB (1917-1969)**

Coffee Table

circa 1950

from the Irwin Collection for Calvin, mahogany, brass, travertine,  
with brass Calvin tag  
in drawer

height 15in (38cm); width 72in (183cm); depth 24in (61cm)

**\$800 - 1,200**



72



73

73

**CLAUDE VENARD (1913-1999)**

Untitled (Still Life with Peach)

oil on canvas, signed 'C. VENARD' lower left

10 1/2 x 13 3/4in (26.6 x 34.9cm)

**\$1,500 - 2,500**

74 W

**PAUL MCCOBB (1917-1969)**

Coffee Table

circa 1950

from the Irwin Collection for Calvin, mahogany, brass

height 16in (41cm); width 66in (168cm); depth 32in (81.5cm)

**\$800 - 1,200**



74



75 (partial lot illustrated)

75

**LAGARDO TACKETT (1911-1984)**

Extensive Collection of Tableware

1953/1956

comprising works by Kenji Fujita for Tackett Associates and LaGardo Tackett for Schmid International, porcelain, various maker's marks *varying forms and sizes, the tallest 12in (30cm)*

**\$1,000 - 2,000**

**Provenance**

Collection of Lynn Pickwell

76

**GLEN LUKENS (1887-1967)**

Bowl

circa 1940

partially glazed ceramic, signed 'GLEN LUKENS' on the underside in glaze

*height 3 1/2in (8.8cm); diameter 9 1/2in (24.1cm)*

**\$2,500 - 3,500**

Glen Lukens (1887-1967) changed the way we view ceramics today. Lukens, an award-winning ceramicist and revered instructor, developed rough clay techniques paired with vibrant glazes that had not been seen before. The offered lot, which exhibits Lukens' signature technique, was in the private collection of the California Modernist furniture designer, Maurice Martiné (1918-2006). During his time at the University of Southern California, Martiné studied under Glen Lukens.

Bonhams Los Angeles holds the world auction record at \$18,300 for a Glen Lukens bowl.

**Provenance**

Estate of Maurice Martiné, Laguna Beach, California



76

77 W

**GEORGE NELSON (1908-1986)**

Circular Coffee Table

designed 1946

for Herman Miller, model 5059, laminate, walnut *height 15in (38cm); diameter 40in (102cm)*

**\$1,500 - 2,000**

**Provenance**

Collection of Lynn Pickwell



77





78

78 W

**ALEXANDER CALDER (1898-1976); AFTER**

Untitled (Figure of a Woman)

1975

for C.A.C. Publications, woven maguey jute fiber tapestry, woven 'AC 75' lower right, with C.A.C. Publications tag attached on the reverse  
82 x 56 1/2in (208.3 x 143.5cm)

**\$5,000 - 7,000**

79 W

**HANS J. WEGNER (1914-2007)**

Valet Chair

designed 1953

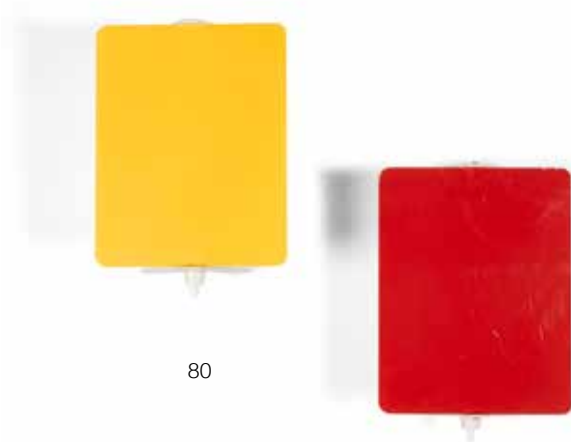
teak and oak, underside of seat stamped 'JOHANNES HANSEN COPENHAGEN DENMARK' with maker's symbol

height 37 1/2in (95.2cm); width 20in (50.8cm); depth 18 1/2in (46.9cm)

**\$2,500 - 3,500**



79



80

80

**CHARLOTTE PERRIAND (1903-1999)**

Two CP-1 Wall Appliques

designed 1950

for Galerie Steph Simon, enameled steel and plastic, with molded maker's mark and gallery marks

height 7in (13cm); width 5in (13cm); depth 2 3/4in (7cm)

**\$1,200 - 1,800**

**Provenance**

Collection of Lynn Pickwell

81W

**PETER WEGNER (BORN 1963)**

Misplaced Whites

2010

alkyd gloss enamel over satin enamel on MDF with glue sizing with wallpaint on wall, signed, titled and dated on reverse

overall 92 x 112in (233.7 x 284.5cm)

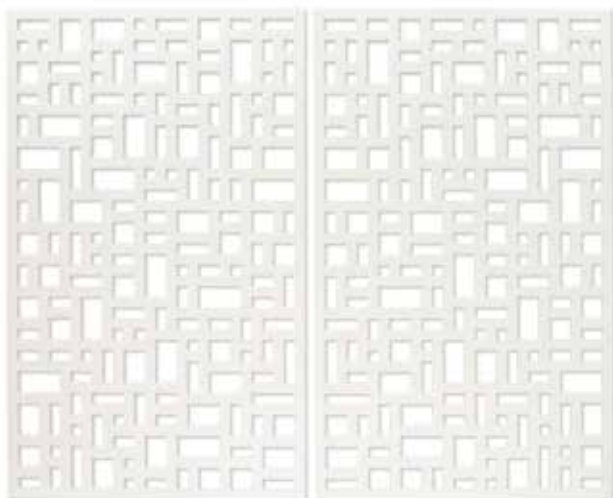
**\$2,000 - 3,000**

**Provenance**

William Griffin Gallery, Santa Monica, California

**Exhibited**

William Griffin Gallery, Santa Monica, California, 'Peter Wegner: Absence of Field', March 13-May 15, 2010



81

82 W

**CARLO HAUNER (1927-1997) & MARTIN EISLER (1913-1977)**

Pair of Metal-Tubed Side Tables

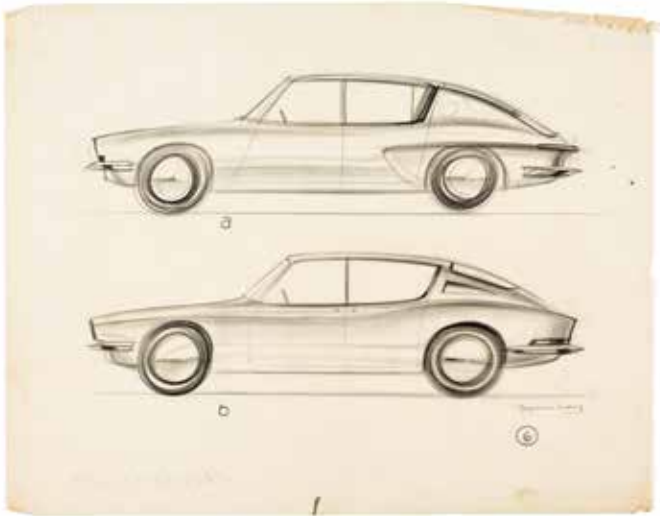
enameled metal, laminate, underside of one table with maker's mark

height 15 1/2in (39.5cm); diameter 15 1/2in (39.5cm)

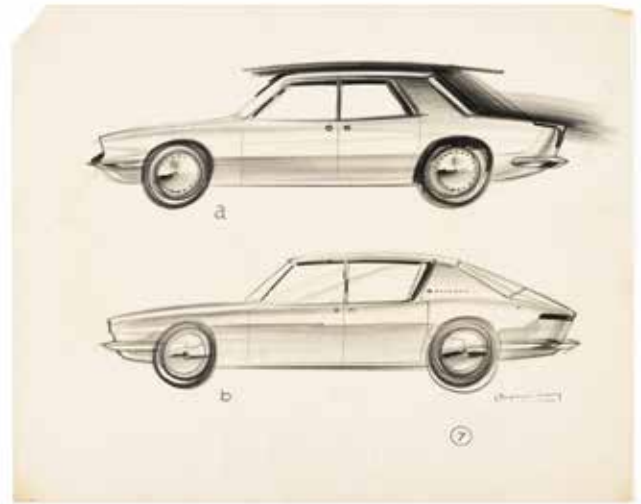
**\$1,000 - 1,500**



82



83



83

**RAYMOND LOEWY (1893-1986)**

Two Concept Car Sketches for Studebaker

circa 1962

colored pencil on tracing paper, each signed in ink 'Raymond Loewy' and numbered lower right

sheet of each 19 x 24in (48.3 x 61cm)

**\$800 - 1,200**

**Provenance**

Raymond Loewy, Monte Carlo

84 W

**CARLO HAUNER (1927-1997) & MARTIN EISLER (1913-1977)**

Pair of Armchairs

1950s

for Forma, green fabric upholstery, wrought iron

height 31 1/2in (80cm); width 30in (76cm); depth 20in (51cm)

**\$4,000 - 6,000**



84



85



85 W

**PEDRO USECHE (BORN 1956)**

Group of Four RIPA Chairs

cumaru, top-stitched leather, polished stainless steel

height 32 1/2in (82.5cm); width 18 1/2in (47cm); depth 20 1/2in (53cm)

**\$2,000 - 4,000**

86

**GREG GONG (EARLY 21ST CENTURY)**

Untitled (6)

2014

oil on panel, signed and dated 'G. GONG 2014' on the reverse

30 x 24in (76.2 x 61cm)

**\$1,000 - 1,500**

**Provenance**

Acquired directly from the artist by the present owner



86





87

87  
**JOSÉ CHÁVEZ MORADO (1909-2002)**

Caballito  
felt marker on paper, initialed lower right 'CHM'  
8 3/4 x 16in (22.2 x 40.6cm)

**\$800 - 1,200**

This work is accompanied by a certificate of authenticity signed by the artist and dated April 17, 1999.

88  
**JOSÉ CHÁVEZ MORADO (1909-2002)**

Cruz  
circa 1970  
pastel on paper, with artist's monogram and inscribed illegibly lower right  
12 x 12 1/4in (30.5cm x 31.1cm)

**\$800 - 1,200**

This work is accompanied by a certificate of authenticity signed by the artist and dated March 17, 1998.



88

89 W  
**JORGE ZALSZUPIN (1922-2020)**

T-Invertido Three Seat Sofa  
faux leather and chromed metal  
height 27 1/4in (69.3cm); width 71in (181cm); depth 29 1/2in (75cm)

**\$2,000 - 3,000**



89





90

90

**ANCILOTTI & C.**

Collection of Forty Frank Lloyd Wright Photographs  
1950s

depicting structures, models and architectural blueprints  
including The Guggenheim Museum, New York,  
Fallingwater, and La Miniatura, gelatin silver prints, a  
selection signed 'FOT. ANCILOTTI & C - MILANO - VIA  
SOLFERINO 3 - TEL. 89.85.84'  
each 9 1/2 x 6 3/4in (24.1 x 17.1cm)

**\$3,000 - 5,000**

**Provenance**

Private Collection, Milan

91W

**FRANK LLOYD WRIGHT (1869-1959)**

Dining Suite

1986

for Cassina, cherrywood, leather, comprising a  
rectangular table and four armchairs, underside of  
chairs stamped 'Cassina/Frank Lloyd Wright No. 15024/  
Copyright 1986 FLW Fdn'  
height of table 27 7/8in (71cm); length 78 3/4in (200cm);  
depth 38 1/2in (98cm); height of chairs 32in (81.5cm);  
width 21 1/2in (55cm); depth 20 1/2in (52cm)

**\$3,000 - 5,000**



91

92

**ARNOLD NEWMAN (1918-2006)**

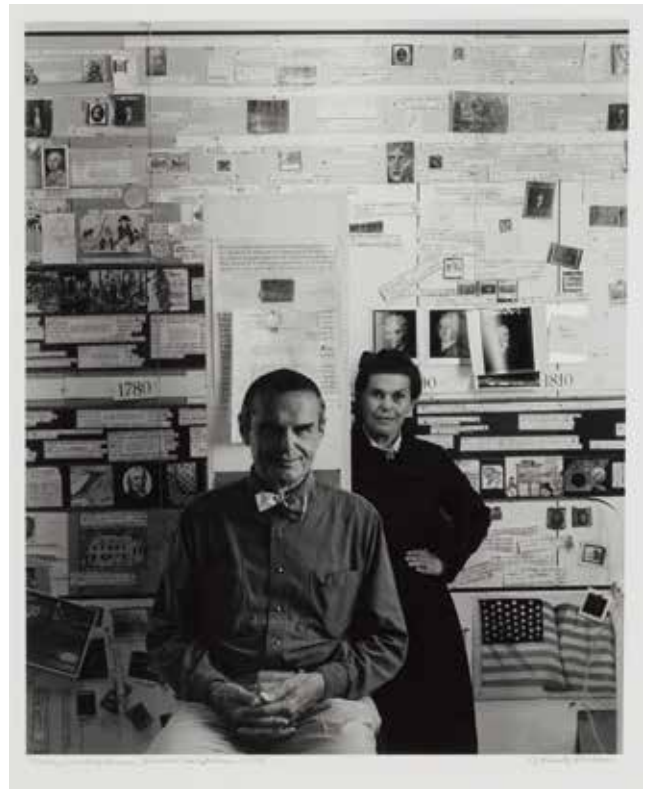
Charles and Ray Eames, Venice California

1974

gelatin silver print, signed 'Arnold Newman' lower right, titled and dated lower left, stamped verso

image: 12 x 9 3/4in (30.5 x 24.7cm); sheet: 14 x 11in (35 x 28.9cm)

**\$1,200 - 1,800**



92

93

**CHARLES (1907-1978) & RAY EAMES (1912-1988)**

Group of Three Films

1952/1987 and 1955/1987

tin, film negative, each with Charles & Ray Eames office labels: 'BLACKTOP 1952 #42 11/19/87', 'PARADE #66 10/15/87', 'HOUSE #111 10/15/87', with further labeling along the edge of each film cannister

height of each cannister 1in (2.5cm); diameter 7 1/4in (18.4cm)

**\$1,200 - 1,800**

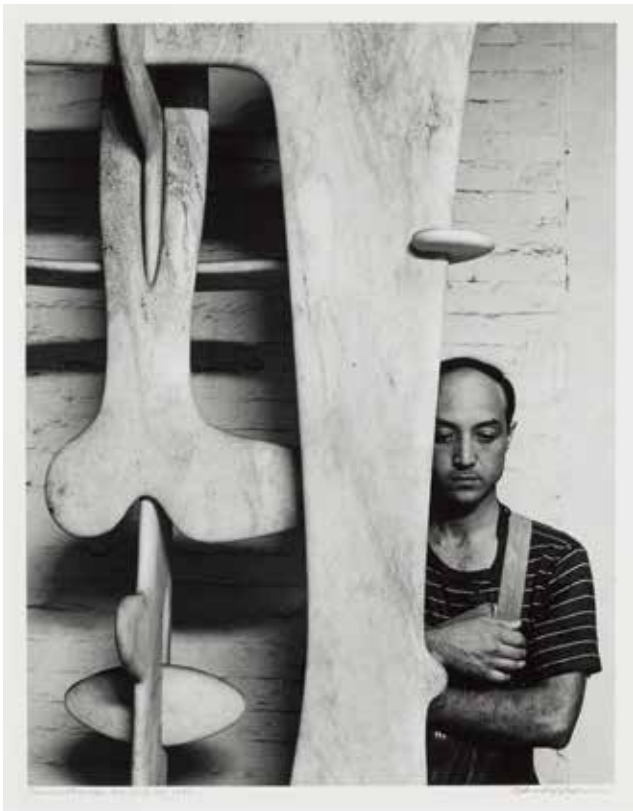
**Provenance**

Eames Studio

Mary Marks



93



94

94

**ARNOLD NEWMAN (1918-2006)**

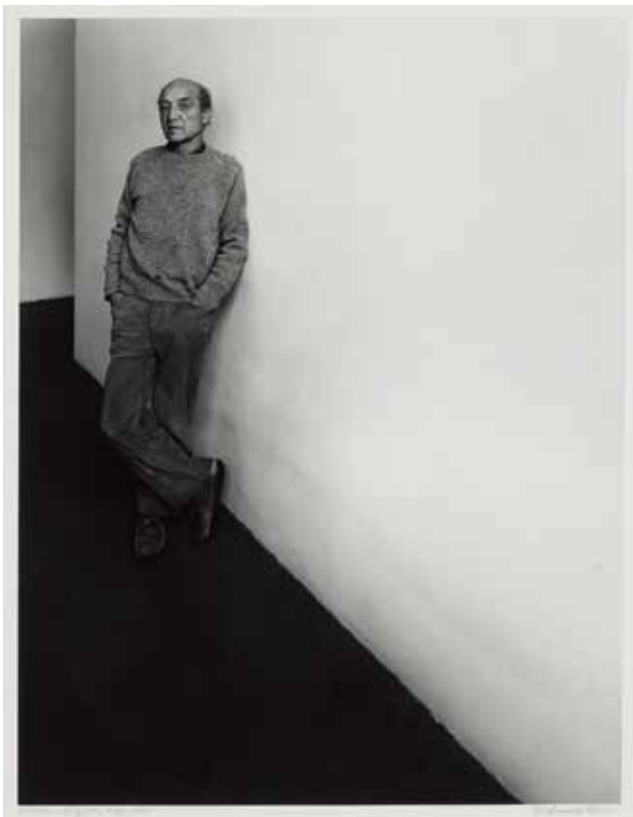
Isamu Noguchi New York City

1947

gelatin silver print, signed 'Arnold Newman' lower right, titled and dated lower left, stamped verso

*image: 12 5/8 x 9 5/8in (32 x 24.4cm); sheet: 14 x 11in (35 x 28.9cm)*

**\$1,500 - 2,000**



95

95

**ARNOLD NEWMAN (1918-2006)**

Isamu Noguchi NYC

1986

gelatin silver print, signed 'Arnold Newman' lower right, titled and dated lower left, signed, dated and stamped verso

*image: 12 3/4 x 9 3/4in (32.4 x 24.7cm); sheet: 14 x 11in (35 x 28.9cm)*

**\$1,000 - 1,500**



96

96

**JULIUS SHULMAN (1910-2009)**

Set of Six Photographs of Richard Neutra's Von Sternberg House,  
Northridge, California  
1947/1990s  
gelatin silver prints, each with photographer's credit stamp on verso  
and further inscribed in ink in the photographer's hand  
10 x 8in (20.3 x 25.4cm)

**\$3,000 - 5,000**

**Provenance**

Property from a Private American Collector

97 W

**DONALD JUDD (1928-1994)**

Plywood Table (Model 88)  
designed 1990  
black laminated plywood  
height 30in (76.2cm); length 94 1/2in (240cm); width 47 1/4in (120cm)

**\$1,500 - 2,500**

**Provenance**

Estate of Gerard L. Cafesjian



97



98

98

**MICHAEL GRAVES (1934-2015)**

The Portland Building

1982

mixed media collage poster, signed 'Graves' and dated  
collage component 17 x 17in (43.2 x 43.2cm); poster 31 x  
20in (78.7 x 50.8cm)

**\$500 - 700**

**Provenance**

Max Protetch Gallery, New York

The Estate of Evelyn Foster

99

**MICHAEL GRAVES (1934-2015)**

Mailbox 7000

1990

for The Markuse Corporation, rolled steel, stamped steel,  
aluminum, enamel

height 14in (35.5cm); width 23 3/4in (60.3cm); depth 9  
1/2in (24.1cm)

**\$600 - 800**

100 W

**MICHAEL GRAVES (1934-2015)**

Dining Table

1990s

bird's eye maple, mother-of-pearl, ebony

height 29in (73.6cm); width 41in (104.1cm); depth 105in  
(266.7cm)

**\$1,500 - 2,500**



99



100



101

**RICKY SWALLOW (BORN 1974)**

Portrait after Paul Thek/Palermo Catacombs

2005

watercolor on paper, signed, titled and dated 'PORTRAIT AFTER PAUL THEK/PALERMO CATACOMBS R Swallow 05' upper right  
12 1/2 x 9 3/4in (32 x 25cm)

**\$500 - 700**

**Provenance**

Modern Art, London

Acquired directly from the above by the present owner

102 W

**CHARLES JENCKS (1939-2019)**

Pair of Tea Caddy tables

polychromed and silvered wood

height 29in (73.6cm); width 31in (78.7cm); depth 21in (53.3cm)

**\$1,200 - 1,800**



101



102



103



104

103

**TADASHI ASOMA (BORN 1923)**

Untitled (Design for Fan)

1970

gouache on paper, signed and dated 'ASOMA '70' lower right  
28 x 12 1/2in (71.1 x 31.7cm)

**\$800 - 1,200**

104 W

**DUSTIN PEVEY (AMERICAN, BORN 1980)**

Guckk

2015

acrylic and inkjet ink on canvas, signed and dated on the overlap  
48 x 36in (121.9 x 91.4cm)

**\$1,500 - 2,500**

**Provenance:**

Acquired directly from the artist by the present owner  
Private Collection, California



105

105 W

**YVES BÉHAR (BORN 1967)**

Third Voyage Light Sculpture

2007

for Swarovski Crystal Palace, Swarovski crystal, aluminum  
approximate height 30in (76.2cm); length 84in (213.5cm); width  
36in (77cm)

**\$8,000 - 12,000**

The offered lot, Third Voyage, is a smaller version of the original Voyage sculpture that was installed in JFK's Terminal 4 in New York, 2006.

**Provenance**

Bonhams, Los Angeles, '20th Century Decorative Arts', 6 April  
2009, Lot 2173  
Estate of Gerard L. Cafesjian

106

**ROBIN RHODE (BORN 1976)**

Tile #533, from the BMW project 'An Expression of Joy'

2008

paint on plywood

19 1/2 x 23 3/4in (49.5 x 60.4cm)

**\$1,200 - 1,800**

In 2008, BMW commissioned Robin Rhode to capture the 'joy and spontaneous emotion of the Z4 drive using the vehicle as a paintbrush.' This tile was taken from the 100 x 200 foot section of canvas upon which Rhode created his masterpiece, using hydraulically powered dispensers mounted inside the wheel wells to spray each tire with precise amounts of paint as the Z4 drove across and 'painted' the canvas.



106



107

107

**LOTHAR FISCHER (1933-2004)**

Quadriga

1987

bronze, inscribed 'Lothar Fischer', editioned 1/6 and dated '1987'  
height 8 1/4in (20.9cm); length 31in (78.8cm); width 5 1/4in (13.3cm)

**\$4,000 - 6,000**

**Provenance**

Stephen Haller Fine Art, New York

Acquired from the above by the present owner, 1989

108W

**ERIC ORR (1939-1998)**

Fountain

1980s

patinated bronze

height 86in (216cm); width 17in (43cm); depth 16in (40.5cm)

**\$3,000 - 5,000**

**Provenance**

Estate of Gerard L. Cafesjian



108





109 W

**BRUCE BEASLEY (BORN 1939)**

Bateleur II

1989

bronze, from an edition of 9

*height 38in (97cm); width 66in (168cm); depth 42in (107cm)*

**\$8,000 - 12,000**

**Provenance**

Harcourts Gallery, San Francisco

Private Collection, California

**Literature**

Karen O Janovy and Daniel A Siedell, 'Sculpture from the Sheldon Memorial Art Gallery', University of Nebraska, 2005, p. 202-203 (another example illustrated)

'Bruce Beasley', Pangolin London, 2012, p. 34-35 (another example illustrated)





110

110

**STEVE KESTREL (BORN 1947)**

Waverly (Koi)

patinated bronze, incised 'S. KESTREL 13/21' with artist's moniker

height 9 3/4in (25cm); width 30 1/4in (77cm); depth 8 1/4in (21cm)

**\$1,500 - 2,500**

**Provenance**

Estate of William P. Bishop, Scottsdale, Arizona

We are grateful to the artist for assisting with the catalog description.

111

**STEVE KESTREL (BORN 1947)**

Parthenogenesis

patinated bronze, incised 'S. KESTREL 7/21' with artist's moniker

height 5 3/4in (14.6cm); width 18 1/2in (46.9cm); depth 10in (25.4cm)

**\$800 - 1,200**

**Provenance**

Estate of William P. Bishop, Scottsdale, Arizona

We are grateful to the artist for assisting with the catalog description.



111



112 W

**VICTORIA LITTLEJOHN**

Twenty Tile Wall Composition

circa 1968

glazed stoneware, stained wood, five tiles incised 'Victoria Littlejohn'  
 overall height 60in (152cm); width 38in (97cm); depth 3in (7.5cm)

**\$1,000 - 1,500**



113

113

**BRENDA HOUSTON (FOUNDED 2008)**

Box

amethyst clusters, patinated bronze, signed 'Brenda Houston'  
height 3in (7.6cm); width 10in (25.4cm); depth 6in (15.2cm)

**\$400 - 600**

114

**BRENDA HOUSTON (FOUNDED 2008)**

Box

rose quartz, platinum-washed steel, signed 'Brenda Houston'  
height 3 1/2in (8.89cm); width 5 1/2in (13.9cm); depth 5 1/2in (13.9cm)

**\$400 - 600**



114



115

115

**BRENDA HOUSTON (FOUNDED 2008)**

Pair of Table Lamps

selenite, acrylic

height 30in (76.2cm); width 12in (30.4cm); depth 4 1/2in (11.4cm)

**\$1,200 - 1,500**

116

**BRENDA HOUSTON (FOUNDED 2008)**

Pair of Wall Sconces

Brazilian agate slab, backed with metal borders and LED light  
12 x 7 1/2 x 1in (30 x 19 x 2.5cm)

**\$800 - 1,200**



116

117 W

**BRENDA HOUSTON (FOUNDED 2008)**

Table

petrified wood, brushed steel

Overall 28 x 19 x 24 1/2in (71 x 48.5 x 62.2cm)

**\$2,000 - 3,000**



117



118

118

**PHILIP MOULTHROP (BORN 1947)**

Bowl

late 20th century

turned ash leaf maple, monogrammed, signed 'Philip Moulthrop', inscribed 'Ash Leaf Maple Acer Negundo', and numbered '5920' on underside

height 13in (33cm); diameter 15 3/4in (40cm)

**\$800 - 1,200**

**Provenance**

Estate of Gerard L. Cafesjian

119

**JOHN MCQUEEN (BORN 1943)**

Sculptural Vessel

circa 1986

stitched and painted bark, apparently unmarked

height 13 1/2in (34.2cm); width 16 1/2in (41.9cm);

depth 18in (45.7cm)

**\$1,000 - 1,500**



119



120

120 W

**KEVIN IRVIN (BORN 1959)**

Trilogy Cabinet

black dyed and natural maple, bronze

height 32in (81.2cm); width 10in (25.4cm); depth 8in (20.3cm)

**\$1,000 - 1,500**

**Provenance**

Estate of Gerard L. Cafesjian





121

121

**MASSIMO VITALI (BORN 1964)**

Knokke Triptych (from A Portfolio of Landscapes and Figures)  
2006

color offset lithographs printed on 300gsm Consort Royal  
paper; Steidl Verlag, Göttingen, Germany, pub., artist's  
inkstamp verso, edition 41/120

each image: 33 3/4 x 26in (85.7 x 66cm); sheet: 35 1/4 x 27  
1/2in (89.5 x 69.8cm)

**\$4,000 - 6,000**

122 W

**FRANK GEHRY (BORN 1929)**

Rocking Chair

circa 1972

for Easy Edges, Inc., cardboard, Masonite

height 26in (66cm); width 23in (58.5cm); depth 40in (102cm)

**\$2,000 - 3,000**



122



123

123

**BEN ARONSON (BORN 1958)**

Still Life with Egg: IV

1994

mixed media on paper, signed 'Aronson' and dated lower left  
8 1/2 x 7in (21.6 x 17.8cm)

**\$1,000 - 1,500**

**Provenance**

Louis Newman Galleries, Beverly Hills, California

124

**TOSHIKO TAKAEZU (1922-2011)**

Pink Moon Pot

1980s

glazed stoneware, incised maker's mark on underside  
height 5 1/4in (13cm)

**\$1,000 - 1,500**

**Provenance**

Acquired directly from the artist



124

125

**TOSHIKO TAKAEZU (1922-2011)**

Mountain Pot and Full Moon Pot

1980s and circa 2000 respectively

glazed stoneware, each with incised maker's mark on underside  
and signature rattle

height of tallest 9 3/4in (24.7cm)

**\$2,000 - 3,000**

**Provenance**

Acquired directly from the artist



125

126

**TOSHIKO TAKAEZU (1922-2011)**

Mother Moon Pot and Blue Moon Pot

1970s (Moon Pot)

glazed stoneware, each with incised maker's mark on

underside, blue moon pot with signature rattle

*height of tallest 6 1/2in (16.5cm)*

**\$1,500 - 2,000**

**Provenance**

Acquired directly from the artist



126

127

**CLIFF LEE (BORN 1951)**

Group of Three Vases

1988

porcelain, each incised with maker's signature, two

dated '88'

*height of tallest 8in (20cm); diameter of top 6 1/4in*

*(16cm)*

**\$1,000 - 2,000**

**Provenance**

Private Collection, West Coast



127



128

128

**RICHARD BLOW (1904-1983)**

Fish

for Montici Pietra Dura, hardstone specimens and mother of pearl in parcel gilt walnut frame, marked 'Made in Italy' on the reverse  
*plaque 7 x 10in (18 x 26cm); frame 13 x 15 1/2in (33 x 39.5cm)*

**\$1,500 - 2,500**

**Provenance**

Estate of Gerard L. Cafesjian



129

129

**SHIMAOKA TATSUZO (1917-2007)**

Square Bottle with Handmade Japanese Box

1975

with rope impression design, glazed stoneware, wood, incised maker's mark on underside of bottle  
*height of bottle 9in (23cm); width 4in (10cm); depth 4in (10cm)*

**\$800 - 1,200**



130

130

**MICHAEL KENNA (BORN 1953)**

Group of Three Photographs

1987-88

gelatin silver prints, each signed 'Michael Kenna' and

dated lower right, from an edition of 45, comprising:

'Grand Canal, Study 2, Versailles, France'

'Fence Post, Tidal Lagoon, Elkhorn Slough, CA'

'Three Urns, St. Germaine-en-Laye, France'

largest 7 1/2 x 7 1/2 in (19 x 19 cm)

**\$1,500 - 2,500**

131

**HAMADA SHOJI (1894-1978)**

Two Tea Bowls with Handmade Japanese Boxes

glazed stoneware, wood, bowls unmarked, boxes

stamped with artist's monogram

height of bowls 2 1/4 in (6 cm); diameter 3 in (7.5 cm)

**\$1,200 - 1,800**

**Provenance**

Acquired directly from the artist in Japan

132

**HAMADA SHOJI (1894-1978)**

Bottle with Handmade Japanese Box

with fingerprint designs, glazed stoneware, wood

height of bottle 8 in (20 cm); width 5 in (13 cm); depth 3 in (7.5 cm)

**\$1,800 - 2,500**

**Provenance**

Acquired directly from the artist in Japan



131



132





133 W

**ANDREA MARIE BREILING (21ST CENTURY)**

My Body is My Battleground

2017

oil and flashe on canvas, signed 'ANDREA MARIE BREILING', titled  
and dated on the reverse stretcher  
*96 x 36in (243.8 x 91.4cm)*

**\$2,000 - 4,000**



(Image of reverse)

134

**BETTY WOODMAN (1930-2018)**

Muscle Boys (Triptych)

circa 1984

glazed earthenware, each stamped 'WOODMAN'

height of tallest 22in (55.8cm)

**\$50,000 - 80,000**

A similar triptych is in the permanent collection at the Woodman Family Foundation.

**Provenance**

The Greenberg Gallery, St. Louis, Missouri

Private Collection, La Jolla, California



135 (partial lot illustrated)



136

135

**MATT MULLICAN (BORN 1951)**

Untitled (Matt Mullican Portfolio)

1993

comprising sixty-four etchings and ten silkscreens with text, colophon and hardshell case, edition 23/32, each print initialed, dated and numbered verso, except for the first silkscreen and etching, signed recto

*plate of etchings 10 1/2 x 7in (26.7 x 17.8cm); sheet of etchings 15 x 11in (38.1 x 28cm); sheet of silkscreens 29 1/2 x 21 1/2in (74.9cm x 54.6cm)*

**\$2,500 - 3,500**

136

**STAN BITTERS (BORN 1936)**

Self-Portrait

circa 1979

glazed ceramic tile

*height 9 3/4in (24.8cm); width 2 1/4in (6cm); depth 1/2in (1.2cm)*

**\$500 - 700**

**Provenance**

Private Collection, Florida



137

137

**HIROSHI SUGIMOTO (BORN 1948)**

Sea triptych (three works)

tri-toned offset lithographs, blindstamped recto with title, year and image number; comprising:

'Tasman Sea, Ngarupupu, 1990, 330'

'Black Sea, Oakbayir, 1991, 368'

'Maramara Sea, Silivli, 1991, 369'

each image: 9 1/2 x 12 1/4in

**\$3,000 - 5,000**

138

**PETER SHIRE (BORN 1947)**

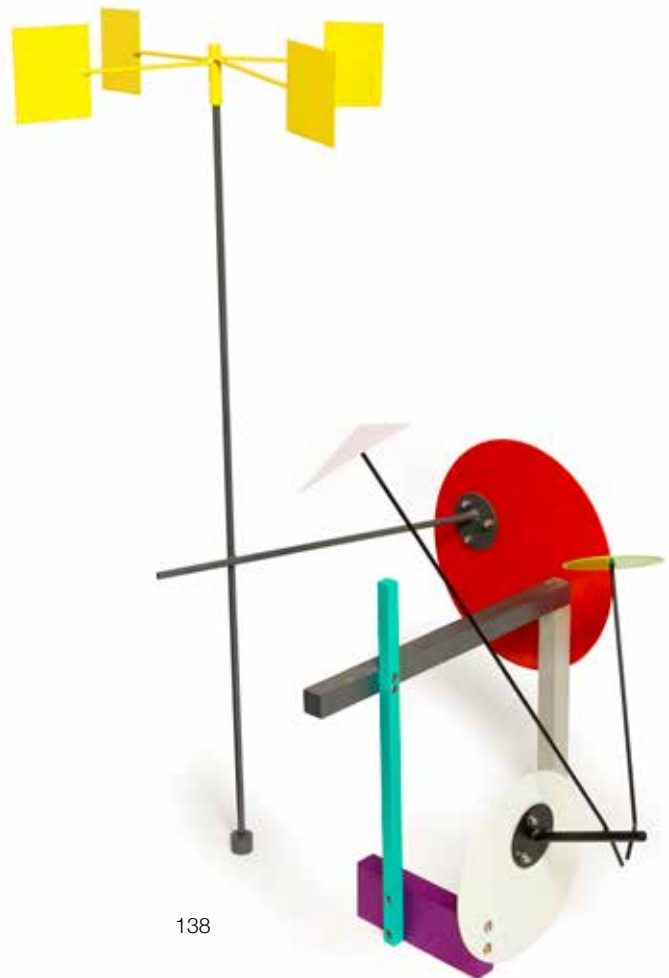
Night Studio

1989

welded steel and aluminum with anodized and two-part polyester paint, from an edition of 24

height 27 1/2in (69.8cm); width 16in (40.7cm); depth 21in (53.4cm)

**\$1,500 - 2,500**



138



139



140

139

**FULVIO BIANCONI (1915-1996)**

Intarsio Pezzato Vase

circa 1950

for Cenedese, yellow, amber, and clear glass tesserae  
height 13in (33cm); width 5in (13cm); depth 5in (13cm)

**\$2,500 - 3,500**

**Provenance**

Private Collection, Europe

140

**FULVIO BIANCONI (1915-1996)**

Pezzato Vase

circa 1950

for Cenedese, sky blue, navy blue, cranberry and frosted  
glass tesserae, etched 'Cenedese' to underside  
height 6 1/4in (16cm); width 8in (20cm); depth 8in (20cm)

**\$2,500 - 3,500**

**Provenance**

Private Collection, Europe



141

141

**FULVIO BIANCONI (1915-1996)**

Three Hens

circa 1955

for Venini, glass, acid etched 'VENINI MURANO ITALIA'  
to top of each base  
tallest 7 1/2in (19cm)

**\$3,000 - 5,000**

**Provenance**

Private Collection, Europe



142

**LUDOVICO DIAZ DE SANTILLANA (1931–1989)**

Philips Tazza

1965

for Venini, blown glass, acid etched 'VENINI PHILIPS' on underside  
*height 7in (17.5cm); width 8 1/4in (21cm); depth 6 1/4in (16cm)*

**\$1,500 - 2,000**

**Provenance**

Private Collection, Europe



142

143

**ALFREDO BARBINI (1912-2007)**

Vase

circa 1980

sommerso glass, etched 'A. Barbini' on underside and '26/100'  
along base, with applied Barbini Murano label  
*height 8 3/4in (22.5cm)*

**\$1,200 - 1,800**

**Provenance**

Private Collection, Europe



143



144

144

**ARCHIMEDE SEGUSO (1909-1999)**

Polveri Vase

circa 1960

for Seguso, blown glass, etched 'Archimede Seguso/Murano'

height 8in (20cm)

**\$2,000 - 3,000**

**Provenance**

Private Collection, Europe

145

**ANTONIO DA ROS (BORN 1936)**

Fish

circa 1960

for Cenedese, sommerso glass

height 13 1/2in (34cm)

**\$2,000 - 3,000**

**Provenance**

Private Collection, Europe



145

146

**ARCHIMEDE SEGUSO (1909-1999)**

Merletto Bowl

circa 1950

blown glass

height 2 3/4in (7cm); width 7 1/2in (19cm); depth 6 1/2in (17cm)

**\$1,000 - 1,500**

**Provenance**

Private Collection, Florida



146



147



149



148

147

**ERCOLE BAROVIER (1889-1974)**

Crepusculo Table Lamp Base

circa 1955

blown glass with colorless, green and yellow inclusions, brass fittings, with Barovier and Toso label, numbered 24134

height 18 1/4in (47cm); diameter of base 7in (18cm)

**\$1,500 - 2,000**

**Provenance**

Private Collection, Europe

148

**ERCOLE BAROVIER (1889-1974)**

Monumental Efeso Table Lamp Base

circa 1955

blown glass, brass fittings

height 22in (56cm); diameter of base 7in (18cm)

**\$2,000 - 3,000**

**Provenance**

Private Collection, Europe

149

**PAOLO VENINI (1895-1959)**

Fiamma Obelisc

circa 1956

sommerso glass

height 14in (36cm); width 6in (15cm); depth 4in (10cm)

**\$1,500 - 2,500**

**Provenance**

Private Collection, Florida

150

**ANZOLO FUGA (1914-1998)**

Vase

circa 1960

for A.V.E.M., blown glass

height 13 1/2in (34cm); diameter 6in (15cm)

**\$1,500 - 2,000**

**Provenance**

Private Collection, Europe



150



151

152

151

**ERMANNON NASON (1928-2013)**

Goat

circa 1970

colorless blown glass with applied black glass decoration  
height 9 1/2in (24cm); length 11in (28cm); width 3in (8cm)

**\$2,500 - 3,500**

**Provenance**

Private Collection, Europe

152

**ERMANNON NASON (1928-2013)**

Unicorn

circa 1970

colorless blown glass with applied black glass decoration  
height 11in (28cm); length 13in (33cm); width 3in (8cm)

**\$2,000 - 3,000**

**Provenance**

Private Collection, Europe



153

153

**ERMANNON NASON (1928-2013)**

Antelope

circa 1970

opalescent blown glass with red, black and lattimo applied glass decoration  
height 9 3/4in (25cm); length 17in (43cm); width 4in (10cm)

**\$4,000 - 6,000**

**Provenance**

Private Collection, Europe

154 W

**ROBERT NATKIN (1930-2010)**

Untitled (Apollo Series)

circa 1975

acrylic on canvas, signed 'Natkin' lower center

48 x 74in (121.9 x 188cm)

\$5,000 - 7,000



154



155

155

**ERMANNONASON (1928-2013)**

Bird Form

circa 1965

for Cenedese, opalescent blown glass with applied iridescent glass decoration

height 9 1/2in (24cm); length 12in (30cm); width 7 1/2in (19cm)

\$3,000 - 5,000

**Provenance**

Private Collection, Europe

156

**ERMANNONASON (1928-2013)**

Applied vase

circa 1960

for Cenedese, opalescent blown glass with applied red and blue glass decoration, etched 'E. Nason' on underside

height 13in (33cm)

\$3,000 - 5,000

**Provenance**

Private Collection, Europe



156





157

157

**MISSONI**

Vase

1980

Arte vetro Murano polychromatic marble glass, stamped 'Missoni'  
height 17 1/2in (45cm); width 10 1/2in (27cm); depth 7in (18cm)

**\$800 - 1,200**

To be sold without reserve



158

158

**NIGEL COATES (BORN 1949)**

Piva Vase

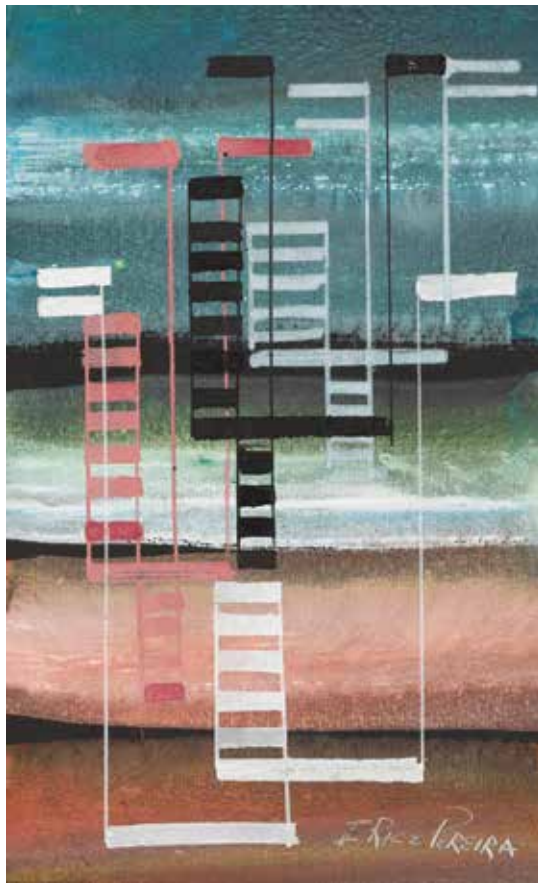
2001

for Salviati, cased glass, etched 'Nigel Coates/per Salviati 2001',  
also with Salviati label, edition 26/30  
height 15in (38cm); width 10in (25.5cm); depth 7in (17.5cm)

**\$1,000 - 1,500**

**Provenance**

Private Collection, Europe



159

159

**IRENE RICE PEREIRA (1907-1971)**

Untitled (Abstract)

gouache on paper, signed 'I RICE PEREIRA' lower right

9 1/4 x 5 3/4 in (23.5 x 14.6cm)

**\$1,200 - 1,800**

160

**PAULA BARTON (BORN 1946)**

Black Plate

1999

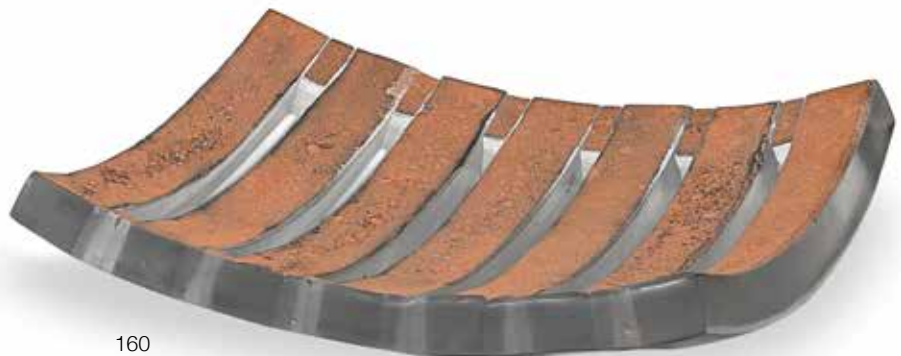
sandcast, fused, slumped and polished glass, signed 'Paula

Barton 1999'

17 x 17 in (43 x 43cm) square

**\$700 - 900**

To be sold without reserve



160



161

161

**CAROLE PERRY (ACTIVE LATE 20TH/EARLY 21ST CENTURY)**

Tapestry Sculpture

fused and thermoformed glass threads, incised indistinctly on underside and numbered '03 11 05 G1'  
height 9 3/4in (24.7cm); length 18in (45.7cm); width 13 1/2in (34.4cm)

**\$1,000 - 1,500**



162

162

**FLO PERKINS (BORN 1951)**

Cactus with Two Blossoms

1992

blown and assembled glass with silicone, incised 'F Perkins 1992' along base

height 10 1/4in (26cm); diameter 8 3/4in (22.3cm)

**\$1,200 - 1,800**

163

**MASSIMO NORDIO (BORN 1947)**

Vessel

1994

glass, engraved 'MASSIMO NORDIO 94'

height 16 3/4in (42.5cm); width 9in (22.8cm); depth 9in (22.8cm)

**\$1,000 - 1,500**



163

164

**SUSAN STINSMUEHLEN-AMEND (BORN 1948)**

Untitled (Baby Bottle)

1994

blown and engraved glass, incised 'Stinsmuehlen-Amend' and dated  
on underside

height 13in (33cm); diameter 4 1/2in (11.4cm)

**\$2,500 - 3,500**



164



165



166



167

165

**IRENE RICE PEREIRA (1907-1971)**

Untitled

oil on canvas, signed 'I. RICE PEREIRA' lower right  
32 x 42in (81.3 x 106.7cm)

**\$3,000 - 5,000**

**Provenance**

Christie's, New York, 13 May 1988, Lot 203  
Christie's, New York, 'Interiors', 23 July 2013, Lot 58  
Acquired from the above by the present owner

166

**LAYLA WALTER (BORN 1975)**

Open Bowl - Woven Interior

2003

cast glass, engraved 'open bowl - woven interior #9 Layla Walter.  
N.Z.2003'

height 5 1/4in (13.3cm); diameter 9 3/4in (24.7cm)

**\$2,000 - 3,000**

167

**STEVEN WEINBERG (BORN 1954)**

Cross and Disc

1978

ground and polished glass, engraved '78 Weinberg', with painted  
museum accession number '79.10'  
height 8in (20cm); width 8in (20cm); depth 3 1/8in (7.8cm)

**\$1,500 - 2,500**

**Provenance**

Lannan Foundation Collection  
Museum of Contemporary Art, Palm Beach, Florida  
Private Collection, Europe





168

**JAN MARES (1953-2005)**

Untitled

1999

black basalt and glass, engraved 'Jan Mares 1999'

height 10 3/4in (27.3cm); width 10 3/4in (27.3cm); depth 4 3/4in (12cm)

**\$10,000 - 15,000**



169

169

**LINO TAGLIAPIETRA (BORN 1934)**

Saturno

1987

for Effetre Internationale, blown glass, signed, dated, and numbered 13/250

*diameter 21in (53.3cm); depth 8 1/2in (21.5cm)*

**\$1,500 - 2,500**



170

170

**KURT WEISER (BORN 1950)**

Footed Bowl

crackle glazed earthenware, incised 'Weiser' on underside

*height 5 1/2in (14cm); diameter 15in (38.5cm)*

**\$1,000 - 2,000**



171

171

**RICHARD MARQUIS (BORN 1945)**

Double Spouted Teapot

2002

blown glass

height 5 1/2in (14cm); width 2in (5cm); depth 4 1/2in (11cm)

**\$1,500 - 2,500**

172

**RICHARD MARQUIS (BORN 1945)**

Footed Vase

1990

for Noble Effort, murrini glass, inset murrine on underside reading

'1990 NOBLE EFFORT'

height 14 1/2in (37cm); diameter 5in (12.5cm)

**\$1,000 - 1,500**

**Provenance**

Private Collection, Florida



172



173



173

**STEVE JENSEN (BORN 1955)**

Red Star, Red River and Zebra Mask I (Three Sculptures)

1999

carved, polychromed cedar

height 14in (36cm); width 14in (36cm); depth 8in (20cm);

height 14in (36cm); width 12in (30.5cm); depth 10in

(25.5cm); height 16in (40.5cm); width 12in (30cm); depth 8in (20cm) respectively

**\$2,000 - 3,000**



(front)

174



(reverse)

174

**HIROSHI YAMANO (BORN 1956)**

From East to West: Fish Catcher #109

2001

blown, silver leafed, electroplated and engraved glass,

engraved '2001 Yamano Hiroshi' on bottom

height 12 1/2in (31.75cm); width 13 5/8in (34.4cm); depth 7 3/4in (19.7cm)

**\$1,000 - 1,500**

175

**WILLIAM MORRIS (BORN 1957)**

Fish Sculpture

1998

blown glass, incised and dated on underside 'William Morris 1998'

5 x 6 x 2in (12.5 x 15 x 5cm)

**\$1,500 - 2,500**

**Provenance**

Private Collection, Pacific Northwest

The offered lot is accompanied by a Polaroid image taken by William Morris.



175



176

176

**WILLIAM MORRIS (BORN 1957)**

Shard Vessel

1985

blown glass, engraved 'William Morris 1985'

height 15 1/4in (38.7cm); width 15in (38cm); depth 7 1/2in (19cm)

\$5,000 - 7,000

177

**DALE CHIHULY (BORN 1941)**

Two Piece Red Seaform Set with Red Lip Wrap

1995

for Portland Press, blown glass, inscribed 'Chihuly PP '95'

largest element 6 3/4 x 11 3/4 x 6 1/4in (17.1 x 29.8 x 15.8cm)

\$2,000 - 3,000

**Provenance**

Private Collection, Santa Barbara, California

178 W

**DALE CHIHULY (BORN 1941)**

Group of Twelve Floats

1999

blown glass

approximate diameters from 6in to 14in (15cm to 36cm)

\$5,000 - 7,000

The offered lot was part of a 1999 installation at a Palm Springs, California residence

**END OF SALE**



177



178



# Conditions of sale

The following Conditions of Sale, as amended by any published or posted notices or verbal announcements during the sale, constitute the entire terms and conditions on which property listed in the catalog shall be offered for sale or sold by Bonhams & Butterfields Auctioneers Corp. and any consignor of such property for whom Bonhams acts as agent. By participating in this sale, you agree to be bound by these terms and conditions.

If live online bidding is available for the subject auction, additional terms and conditions of sale relating to online bidding will apply; see [www.bonhams.com/WebTerms](http://www.bonhams.com/WebTerms) for the supplemental terms. As used herein, "Bonhams," "we" and "us" refer to Bonhams & Butterfields Auctioneers Corp.

1. As used herein, the term "bid price" means the price at which a lot is successfully knocked down to the buyer. The term "purchase price" means the aggregate of (a) the bid price, (b) a PREMIUM retained by us and payable by the buyer (the "buyer's premium"), EQUAL TO 27.5% OF THE FIRST \$12,500 OF THE BID PRICE, PLUS 25% OF THE AMOUNT OF THE BID PRICE ABOVE \$12,500 UP TO AND INCLUDING \$600,000, PLUS 20% OF THE AMOUNT OF THE BID PRICE ABOVE \$600,000 UP TO AND INCLUDING \$6,000,000, PLUS 14.5% OF THE AMOUNT OF THE BID PRICE ABOVE \$6,000,000, and (c) unless the buyer is exempt by law from the payment thereof, any Alabama, Arizona, California, Colorado, Connecticut, Florida, Georgia, Hawaii, Idaho, Illinois, Iowa, Indiana, Kentucky, Louisiana, Maine, Maryland, Massachusetts, Michigan, Minnesota, Mississippi, Nebraska, Nevada, New Jersey, New York, North Carolina, Ohio, Oklahoma, Pennsylvania, Rhode Island, South Carolina, Texas, Utah, Virginia, Washington, D.C., Washington state, West Virginia, Wisconsin, Wyoming or other state or local sales tax (or compensating use tax) and other applicable taxes. With regard to New York sales tax, please refer to the "Sales and Use Tax" section of these Conditions of Sale.

2. In order to bid at the sale, prospective bidders must submit to Bonhams a completed bidder registration form (appearing at the end of this catalog) and any other requested information or references. New bidders and bidders who have not recently updated their registration information must pre-register to bid at least two business days before the sale. Individuals will be required to provide government-issued proof of identity and proof of address. Entity clients will be required to provide documentation including confirmation of entity registration showing the registered name, confirmation of registered address, documentary proof of officers and beneficial owners, proof of authority to transact on behalf of the entity and government-issued proof of identity for the individual who is transacting on the entity's behalf.

We may also request a financial reference and/or deposit from bidders before approving the bidder registration. In the event a deposit is submitted and you are not the successful bidder, your deposit will be returned to you. If you are the successful bidder, any such deposit will be credited to offset the appropriate portion of the purchase price.

We reserve the right to request further information, including regarding the source of funds, in order to complete bidder identification and registration procedures (including completing any anti-money laundering and/or anti-terrorism financing checks we may require) to our satisfaction. If our bidder identification and registration procedures are not satisfied, we may, in our sole discretion, decline to register any bidder or reject any bid or cancel any sale to such bidder.

Every bidder shall be deemed to act as a principal unless prior to the commencement of the sale there is a written acceptance by Bonhams of a bidder registration form completed and signed by the principal which clearly states that the authorized bidding agent is acting on behalf of the named principal. Absent such written acceptance by Bonhams, any person placing a bid as agent on behalf of another (whether or not such person has disclosed that fact or the identity of the principal) may be jointly and severally

liable with the principal under any contract resulting from the acceptance of a bid. Every bidder shall be responsible for any use of its assigned paddle or bidding account, regardless of the circumstances.

3. You represent and warrant that: (i) you have provided us with true and correct copies of valid identification and proof of residence and, if applicable, financial and/or corporate documents; (ii) neither you, your principal (if applicable, and subject to Bonhams' prior written acceptance pursuant to paragraph 2 above), nor any individual or entity with a beneficial or ownership interest in either or in the purchase transaction is on the Specially Designated Nationals List maintained by the Office of Foreign Assets Control of the U.S. Department of the Treasury nor subject to any other sanctions or embargo program or regulation in effect in the United States, European Union, England and Wales, or other applicable jurisdictions; (iii) if you are acting as an agent for a principal, you have conducted appropriate due diligence into such principal, and agree that Bonhams shall be entitled to rely upon such due diligence, you will retain adequate records evidencing such due diligence for a period of five (5) years following the consummation of the sale, and will make these records available for inspection upon Bonhams' request; (iv) neither the purchase transaction (including your bidding activity) nor the purchase funds are connected with nor derive from any criminal activity, and they are not designed to nor have they or shall they, violate the banking, anti-money laundering, or currency transfer laws or other regulations (including without limitation, import-export laws) of any country or jurisdiction, or further any other unlawful purpose, including without limitation collusion, anti-competitive activity, tax evasion or tax fraud.

You acknowledge and agree that we may rely upon the accuracy and completeness of the foregoing warranties.

4. On the fall of the auctioneer's hammer, the highest bidder shall have purchased the offered lot in accordance and subject to compliance with all of the conditions set forth herein and (a) assumes full risk and responsibility therefor, (b) if requested will sign a confirmation of purchase, and (c) will pay the purchase price in full or such part as we may require for all lots purchased. No lot may be transferred.

Unless otherwise agreed, payment in good, cleared funds is due and payable within five (5) business days following the auction sale. Whenever the buyer pays only a part of the total purchase price for one or more lots purchased, we may apply such payments, in our sole discretion, to the lot or lots we choose. Payment will not be deemed made in full until we have received good, cleared funds for all amounts due. Title in any purchased property will not pass until full and final payment has been received by Bonhams. Accounts must be settled in full before property is released to the buyer. In the event property is released earlier, such release will not affect the passing of title or the buyer's obligation to timely remit full payment.

We reserve the right to refuse to accept payment from a source other than the registered bidder or buyer of record. Once an invoice is issued, we cannot change the buyer's name on an invoice.

Payment for purchases must be made in the currency in which the sale is conducted. Bonhams' preferred payment method is by wire transfer. For final purchases exceeding US \$25,000.00, all payments must be in the form of wire transfer unless other arrangements have been approved in advance. For final purchases below US \$25,000.00, payment may also be made in or by the following methods:

- (i) Cash. Please note that the amount of cash that can be accepted from a given purchaser is limited to US \$5,000 per auction sale (whether by single or multiple related payments). If the amount payable exceeds that sum, the balance must be paid by another method.
- (ii) Cashier's check, money order, or personal check with approved credit drawn on a U.S. bank. A processing fee will be assessed on any returned checks.
- (iii) Visa, MasterCard, American Express or Discover debit

or credit card issued in the name of the purchaser or record. Only one debit or credit card may be used for payment of an account balance. This method of payment may not be available to first time purchasers.

To the fullest extent permitted by applicable law, the buyer grants us a security interest in the property, and we may retain as collateral security for the buyer's obligations to us, any property and all monies held or received by us for the account of the buyer, in our possession. We also retain all rights of a secured party under the Uniform Commercial Code (which shall mean the New York Uniform Commercial Code, except where the Uniform Commercial Code of another state governs the perfection of a security interest in collateral located in that state), and you agree that we may file financing statements without your signature. If the foregoing conditions or any other applicable conditions herein are not complied with, in addition to all other remedies available to us and the consignor by law, we may at our election: (a) hold the buyer liable for the full purchase price and any late charges, collection costs, attorneys' fees and costs, expenses and incidental damages incurred by us or the consignor arising out of the buyer's breach; (b) cancel the sale, retaining as liquidated damages all payments made by the buyer; and/or (c) cancel the sale and/or resell the purchased property, at public auction and/or by private sale, and in such event the buyer shall be liable for the payment of all consequential damages, including any deficiencies or monetary losses, and all costs and expenses of such sale or sales, our commissions at our standard rates, all other charges due hereunder, all late charges, collection costs, attorneys' fees and costs, expenses and incidental damages. In addition, where two or more amounts are owed in respect of different transactions by the buyer to us, to Bonhams 1793 Limited and/or to any of our other affiliates, subsidiaries or parent companies worldwide within the Bonhams Group, we reserve the right to apply any monies paid in respect of a transaction to discharge any amount owed by the buyer. If all fees, commissions, premiums, bid prices and other sums due to us from the buyer are not paid promptly as provided in these Conditions of Sale, we reserve the right to impose a finance charge equal to 1.5% per month (or, if lower, the maximum nonusurious rate of interest permitted by applicable law), on all amounts due to us beginning on the 31st day following the sale until payment is received, in addition to other remedies available to us by law.

5. We reserve the right to withdraw any property and to divide and combine lots at any time before such property's auction. Unless otherwise announced by the auctioneer at the time of sale, all bids are per lot as numbered in the catalog and no lots shall be divided or combined for sale.

6. We reserve the right to reject a bid from any bidder, to split any bidding increment, and to advance the bidding in any manner the auctioneer may decide. In the event of any dispute between bidders, or in the event the auctioneer doubts the validity of any bid, the auctioneer shall have sole and final discretion either to determine the successful bidder, re-open the bidding, or to cancel the sale and re-offer and resell the article in dispute. If any dispute arises after the sale, our sales records shall be conclusive in all respects.

We further reserve the right to cancel the sale of any property if (i) you are in breach of your representations and warranties as set forth in paragraph 3 above; (ii) we, in our sole discretion, determine that such transaction might be unlawful or might subject Bonhams or the consignor to any liability to any third party; or (iii) there are any other grounds for cancellation under these Conditions of Sale.

7. If we are prevented by fire, theft or any other reason whatsoever from delivering any property to the buyer or a sale otherwise cannot be completed, our liability shall be limited to the sum actually paid therefor by the buyer and shall in no event include any compensatory, incidental or consequential damages.

8. All lots in the catalog are offered subject to a reserve unless otherwise indicated in the catalog. The reserve is the

# Conditions of sale - Continued

confidential minimum bid price at which such lot will be sold and it does not to exceed the low estimate value for the lot. If a lot is offered subject to a reserve, we may implement such reserve by bidding on behalf of the consignor, whether by opening bidding or continuing bidding in response to other bidders until reaching the reserve. If we have an interest in an offered lot and the proceeds therefrom other than our commissions, we may bid up to the reserve to protect such interest. If the auctioneer determines that any opening or subsequent bid is below the reserve for a lot, (s)he may reject such opening bid and withdraw the item from sale. **CONSIGNORS ARE NOT ALLOWED TO BID ON THEIR OWN ITEMS.**

9. Other than as provided in the Limited Right of Rescission with respect to identification of authorship, all property is sold "AS IS" and any statements contained in the catalog or in any advertisement, bill of sale, announcement, condition report, invoice or elsewhere as to period, culture, source, origin, media, measurements, size, quality, rarity, provenance, importance, exhibition and literature of historical relevance, merchantability, fitness for a particular purpose, or physical condition ARE QUALIFIED STATEMENTS OF OPINION AND NOT REPRESENTATIONS, WARRANTIES, OR ASSUMPTION OF LIABILITY. Neither Bonhams nor the consignor shall be responsible for any error or omission in the catalog description of any property. No employee or agent of Bonhams is authorized to make on our behalf or on that of the consignor any representation or warranty, oral or written, with respect to any property.

10. All purchased property shall be removed from the premises at which the sale is conducted by the date(s) and time(s) set forth in the "Buyer's Guide" portion of this catalog. If not so removed, daily storage fees will be payable to us by the buyer as set forth therein. We reserve the right to transfer property not so removed to an offsite warehouse at the buyer's risk and expense, as set forth in more detail in the "Buyer's Guide." Packing and handling of purchased lots are the responsibility of the buyer and at the buyer's entire risk, as are the identification, application for, and cost(s) of obtaining of any necessary export, import, restricted material (e.g. endangered species) or other permit for such lots.

For an additional fee, Bonhams may provide packing and shipping services for certain items as noted in the "Buyer's Guide" section of the catalog.

11. The copyright in the text of the catalog and the photographs, digital images and illustrations of lots in the catalog belong to Bonhams or our licensors. You will not reproduce or permit anyone else to reproduce such text, photographs, digital images or illustrations without our prior written consent. Bonhams and the consignor make no representation or warranty as to whether the buyer acquires any copyrights on the purchase of an item of Property.

12. Bonhams may, in our discretion, as a courtesy and free of charge, execute bids on your behalf if so instructed by you, provided that neither Bonhams nor our employees or agents will be liable for any error or default (whether human or otherwise) in doing so or for failing to do so. Without limiting the foregoing, Bonhams (including our agents and employees) shall not be responsible for any problem relating to telephone, online, or other bids submitted remotely through any means, including without limitation, any telecommunications or internet fault or failure, or breakdown or problems with any devices or online platforms, including third-party online platforms, regardless of whether such issue arises with our, your, or such third-party's technology, equipment, or connection. By participating at auction by telephone or online, bidders expressly consent to the recording of their bidding sessions and related communications with Bonhams and our employees and agents, and acknowledge their acceptance of these Conditions of Sale as well as any additional terms and conditions applicable to any such bidding platform or technology.

13. These Conditions of Sale shall bind the successors

and assigns of all bidders and buyers and inure to the benefit of our successors and assigns. No waiver, amendment or modification of the terms hereof (other than posted notices or oral announcements during the sale) shall bind us unless specifically stated in writing and signed by us. No act or omission of Bonhams, its employees or agents, nor any failure thereof to exercise any remedy hereunder, shall operate or be deemed to operate as a waiver of Bonhams' rights under these Conditions of Sale. If any part of these Conditions of Sale is for any reason invalid or unenforceable, the rest shall remain valid and enforceable.

14. These Conditions of Sale and the buyer's and our respective rights and obligations hereunder shall be governed by and construed and enforced in accordance with the laws of the State of New York. Any dispute, controversy or claim arising out of or relating to this agreement, or the breach, termination or validity thereof, brought by or against Bonhams (but not including claims brought against the consignor by the buyer of lots consigned hereunder) shall be resolved by the procedures set forth below.

15. You accept and agree that Bonhams will hold and process your personal information and may share and use it as required by law and as described in, and in line with Bonhams' Privacy Policy, available at website at [www.bonhams.com/legals/](http://www.bonhams.com/legals/). If you desire access, update, or restriction to the use of your personal information, please email [data.protection@bonhams.com](mailto:data.protection@bonhams.com).

## SALES AND USE TAX

New York sales tax is charged on the hammer price, buyer's premium and any other applicable charges on any property collected or delivered in New York State, regardless of the state or country in which the buyer resides or does business. Buyers who make direct arrangements for collection by a shipper who is considered a "private" or "contract" carrier by the New York Department of Taxation and Finance will be charged New York sales tax, regardless of the destination of the property. Property collected for delivery to a destination outside of New York by a shipper who is considered a "common carrier" by the New York Department of Taxation and Finance (e.g. United States Postal Service, United Parcel Service, and FedEx) is not subject to New York sales tax, but if it is delivered into any state in which Bonhams is registered or otherwise conducts business sufficient to establish a nexus, Bonhams may be required by law to collect and remit the appropriate sales tax in effect in such state. Property collected for delivery outside of the United States by a freight-forwarder who is registered with the Transportation Security Administration ("TSA") is not subject to New York sales tax.

## MEDIATION AND ARBITRATION PROCEDURES

(a) Within 30 days of written notice that there is a dispute, the parties or their authorized and empowered representatives shall meet by telephone and/or in person to mediate their differences. If the parties agree, a mutually acceptable mediator shall be selected and the parties will equally share the fees and expenses of mediation. The mediator shall be a retired judge or an attorney familiar with commercial law and trained in or qualified by experience in handling mediations. Any communications made during the mediation process shall not be admissible in any subsequent mediation, arbitration or judicial proceeding. All proceedings and any resolutions thereof shall be confidential, and the terms governing arbitration set forth in paragraph (c) below shall govern.

(b) If mediation does not resolve all disputes between the parties, or in any event no longer than 60 days after receipt of the written notice of dispute referred to above, the parties shall submit the dispute for binding arbitration before a single neutral arbitrator. Such arbitrator shall be a retired judge or an attorney familiar with commercial law and trained in or qualified by experience in handling arbitrations. Such arbitrator shall make all appropriate disclosures required by law. The arbitrator shall be drawn from a panel of a national or international arbitration service agreed to by the parties,

and shall be selected as follows: (i) If the arbitration service has specific rules or procedures, those rules or procedures shall be followed; (ii) If the arbitration service does not have rules or procedures for the selection of an arbitrator, the arbitrator shall be an individual jointly agreed to by the parties. If the parties cannot agree on an arbitration service, the arbitration shall be conducted by Judicial Arbitration and Mediation Services, Inc. ("JAMS") or another national or international alternative dispute resolution ("ADR") provider of Bonhams' choice, and the arbitrator shall be selected in accordance with JAMS' Streamlined Arbitration Rules and Procedures or the rules of the other ADR provider selected by Bonhams. The arbitrator's award shall be in writing and shall set forth findings of fact and legal conclusions.

(c) Unless otherwise agreed to by the parties or provided by the published rules of the arbitration service:

- (i) The arbitration shall occur within 60 days following the selection of the arbitrator;
- (ii) The arbitration shall be conducted in New York, New York; and
- (iii) Discovery and the procedure for the arbitration shall be as follows:
  - A. All arbitration proceedings shall be confidential;
  - B. The parties shall submit written briefs to the arbitrator no later than 15 days before the arbitration commences;
  - C. Discovery, if any, shall be limited as follows:
    - (I) Requests for no more than 10 categories of documents, to be provided to the requesting party within 14 days of written request therefor;
    - (II) No more than two (2) depositions per party, provided however, the deposition(s) are to be completed within one (1) day;
    - (III) Compliance with the above shall be enforced by the arbitrator in accordance with New York law;
  - D. Each party shall have no longer than eight (8) hours to present its position. The entire hearing before the arbitrator shall not take longer than three (3) consecutive days;
  - E. The award shall be made in writing no more than 30 days following the end of the proceeding. Judgment upon the award rendered by the arbitrator may be entered by any court having jurisdiction thereof.

To the fullest extent permitted by law, and except as required by applicable arbitration rules, each party shall bear its own attorneys' fees and costs in connection with the proceedings and shall share equally the fees and expenses of the arbitration.

## LIMITED RIGHT OF RESCISSION

If within one (1) year from the date of sale, the original buyer (a) gives written notice to us alleging that the identification of Authorship (as defined below) of such lot as set forth in the UPPERCASE TYPE heading of the catalog description of such lot (as amended by any saleroom notices or verbal announcements during the sale) is not substantially correct based on a fair reading of the catalog (including the terms of any glossary contained therein), and (b) within 10 days after such notice returns the lot to us in the same condition as at the time of sale, and (c) establishes the allegation in the notice to our satisfaction (including by providing one or more written opinions by recognized experts in the field, as we may reasonably require), then the sale of such lot will be rescinded and, unless we have already paid to the consignor monies owed him in connection with the sale, the original purchase price will be refunded.

If, prior to receiving such notice from the original buyer alleging such defect, we have paid the consignor monies owed him in connection with the sale, we shall pay the original buyer the amount of our commissions, any other sale proceeds to which we are entitled and applicable taxes received from the buyer on the sale and make demand on the consignor to pay the balance of the original purchase price to the original buyer. Should the consignor fail to pay such amount promptly, we may disclose the identity of

# Conditions of sale - Continued

the consignor and assign to the original buyer our rights against the consignor with respect to the lot the sale of which is sought to be rescinded. Upon such disclosure and assignment, any liability of Bonhams as consignor's agent with respect to said lot shall automatically terminate.

The foregoing limited right of rescission is available to the original buyer only and may not be assigned to or relied upon by any subsequent transferee of the property sold. The buyer hereby accepts the benefit of the consignor's warranty of title and other representations and warranties made by the consignor for the buyer's benefit. Nothing in this section shall be construed as an admission by us of any representation of fact, express or implied, obligation or responsibility with respect to any lot. **THE BUYER'S SOLE AND EXCLUSIVE REMEDY AGAINST BONHAMS FOR ANY REASON WHATSOEVER IS THE LIMITED RIGHT OF RESCISSION DESCRIBED IN THIS SECTION.**

"Authorship" means only the identity of the creator, the period, culture and source or origin of the lot, as the case may be, as set forth in the UPPERCASE TYPE heading of the print catalog entry. The right of rescission does not extend to: (a) works of art executed before 1870 (unless these works are determined to be counterfeits created since 1870), as this is a matter of current scholarly opinion which can change; (b) titles, descriptions, or other identification of offered lots, which information normally appears in lower case type below the UPPERCASE TYPE heading identifying the Authorship; (c) Authorship of any lot where it was specifically mentioned that there exists a conflict of specialist or scholarly opinion regarding the Authorship of the lot at the time of sale; (d) Authorship of any lot which as of the date of sale was in accordance with the then generally-accepted opinion of scholars and specialists regarding the same; or (e) the identification of periods or dates of creation in catalog descriptions which may be proven inaccurate by means of scientific processes that are not generally accepted for use until after publication of the catalog in which the property is offered or that were unreasonably expensive or impractical to use at the time of such publication.

## LIMITATION OF LIABILITY

EXCEPT AS EXPRESSLY PROVIDED ABOVE, ALL PROPERTY IS SOLD "AS IS." NEITHER BONHAMS NOR THE CONSIGNOR MAKES ANY REPRESENTATION

OR WARRANTY, EXPRESS OR IMPLIED, AS TO THE MERCHANTABILITY, FITNESS OR CONDITION OF THE PROPERTY OR AS TO THE CORRECTNESS OF DESCRIPTION, GENUINENESS, ATTRIBUTION, PROVENANCE OR PERIOD OF THE PROPERTY OR AS TO WHETHER THE BUYER ACQUIRES ANY COPYRIGHTS OR OTHER INTELLECTUAL PROPERTY RIGHTS IN LOTS SOLD OR AS TO WHETHER A WORK OF ART IS SUBJECT TO THE ARTIST'S MORAL RIGHTS OR OTHER RESIDUAL RIGHTS OF THE ARTIST. THE BUYER EXPRESSLY ACKNOWLEDGES AND AGREES THAT IN NO EVENT SHALL BONHAMS BE LIABLE FOR ANY DAMAGES INCLUDING, WITHOUT LIMITATION, ANY COMPENSATORY, INCIDENTAL OR CONSEQUENTIAL DAMAGES. IN NO EVENT SHALL THE AGGREGATE LIABILITY OF BONHAMS AND ITS CONSIGNOR TO A PURCHASER EXCEED THE PURCHASE PRICE ACTUALLY PAID FOR A DISPUTED ITEM OF PROPERTY.

## Seller's guide

### SELLING AT AUCTION

Bonhams can help you every step of the way when you are ready to sell art, antiques and collectible items at auction. Our regional offices and representatives throughout the US are available to service all of your needs. Should you have any further questions, please visit our website at **www.bonhams.com/us** for more information or call our Client Services Department at +1 (323) 850 7500.

### AUCTION ESTIMATES

The first step in the auction process is to determine the auction value of your property. Bonhams' world-renowned specialists will evaluate your special items at no charge and in complete confidence. You can obtain an auction estimate in many ways:

- Attend one of our Auction Evaluation Events held regularly at our galleries and in other major metropolitan areas. The updated schedule for Bonhams Auction Evaluation Events is available at **www.bonhams.com/us**.
- Call our Client Services Department to schedule a private appointment at one of our galleries. If you have a large collection, our specialists can travel, by appointment, to evaluate your property on site.
- Send clear photographs to us of each individual item, including item dimensions and other pertinent information with each picture. Photos should be sent to Bonhams' address in envelopes marked as "photo auction estimate". Alternatively, you can submit your request using our online form at **www.bonhams.com/us**. Digital images may be attached to the form. Please limit your images to no more than five (5) per item.

### CONSIGNING YOUR PROPERTY

After you receive an estimate, you may consign your property to us for sale in the next appropriate auction. Our staff assists you throughout the process, arranging transportation of your items to our galleries (at the consignor's expense), providing a detailed inventory of your consignment, and reporting the prices realized for each lot. We provide secure storage for your property in our warehouses and all items are insured throughout the auction process. You will receive payment for your property approximately 35 days after completion of sale.

Sales commissions vary with the potential auction value of the property and the particular auction in which the property is offered. Please call us for commission rates.

### PROFESSIONAL APPRAISAL SERVICES

Bonhams' specialists conduct insurance and fair market value appraisals for private collectors, corporations, museums, fiduciaries and government entities on a daily basis. Insurance appraisals, used for insurance purposes, reflect the cost of replacing property in today's retail market. Fair market value appraisals are used for estate, tax and family division purposes and reflect prices paid by a willing buyer to a willing seller.

When we conduct a private appraisal, our specialists will prepare a thorough inventory listing of all your appraised property by category. Valuations, complete descriptions and locations of items are included in the documentation.

Appraisal fees vary according to the nature of the collection, the amount of work involved, the travel distance, and whether the property is subsequently consigned for auction.

Our appraisers are available to help you anywhere and at any time. Please call our Client Services Department to schedule an appraisal.

### ESTATE SERVICES

Since 1865, Bonhams has been serving the needs of fiduciaries – lawyers, trust officers, accountants and executors – in the disposition of large and small estates. Our services are specially designed to aid in the efficient appraisal and disposition of fine art, antiques, jewelry, and collectibles. We offer a full range of estate services, ranging from flexible financial terms to tailored accounting for heirs and their agents to world-class marketing and sales support.

For more information or to obtain a detailed Trust and Estates package, please visit our website at **www.bonhams.com/us** or contact our Client Services Department.

# Buyer’s guide

## BUYING AND BIDDING AT AUCTION

Whether you are an experienced bidder or an enthusiastic novice, auctions provide a stimulating atmosphere unlike any other. Bonhams previews and sales are free and open to the public. As you will find in these directions, bidding and buying at auction is easy and exciting. Should you have any further questions, please visit our website at [www.bonhams.com](http://www.bonhams.com) or call our Client Services Department at +1 (212) 644 9001.

### Catalogs

Before each auction we publish illustrated catalogs. Our catalogs provide descriptions and estimated values for each "lot." A lot may refer to a single item or to a group of items auctioned together. The catalogs also include the dates and the times for the previews and auctions. We offer our catalogs by subscription or by single copy. For information on subscribing to our catalogs, you may refer to the subscription form in this catalog, call our Client Services Department, or visit our website at [www.bonhams.com/us](http://www.bonhams.com/us).

### Previews

Auction previews are your chance to inspect each lot prior to the auction. We encourage you to look closely and examine each object on which you may want to bid so that you will know as much as possible about it. Except as expressly set forth in the Conditions of Sale, items are sold "as is" and with all faults; illustrations in our catalogs, website and other materials are provided for identification only. At the previews, our staff is always available to answer your questions and guide you through the auction process. Condition reports may be available upon request.

### Estimates

Bonhams catalogs include low and high value estimates for each lot, exclusive of the buyer's premium and tax. The estimates are provided as an approximate guide to current market value based primarily on previous auction results for comparable pieces, and should not be interpreted as a representation or prediction of actual selling prices. They are determined well in advance of a sale and are subject to revision. Please contact us should you have any questions about value estimates.

### Reserve

All lots in a catalog are subject to a reserve unless otherwise indicated. The reserve is the minimum price that the seller is willing to accept for a lot. This amount is confidential and does not exceed the low estimated value.

### Auction House's Interest in Property Offered at Auction

On occasion, Bonhams may offer property in which it has an ownership interest in whole or in part or otherwise has an economic interest. Such property, if any, is identified in the catalog with a ▲ symbol next to the lot number(s). Bonhams may also offer property for a consignor that has been guaranteed a minimum price for its property by Bonhams or jointly by Bonhams and a third party. Bonhams and any third parties providing a guarantee may benefit financially if the guaranteed property is sold successfully and may incur a financial loss if its sale is not successful. Such property, if any, is identified in the catalog with a symbol next to the lot number(s).

### Bidding at Auction

At Bonhams, you can bid in many ways: in person, via absentee bid, over the phone, or via Bonhams' live online bidding facility. Absentee bids can be submitted in person, online, or via email. Irrespective of previous bidding activity a valid Bonhams client account is required to participate in bidding activity. You will be required to provide government-issued proof of identity and residence, and if you are a company, your certificate of incorporation or equivalent documentation with your name and registered address, government issued proof of your current address, documentary proof of your beneficial owners and directors, and proof of authority to transact. By bidding at auction, whether in person or by agent, by absentee bid, telephone, online or other means, the buyer or bidder agrees to be bound by the Conditions of Sale. Lots are auctioned in consecutive numerical order as they appear in the catalog. Bidding normally begins below the low estimate. The auctioneer will accept bids from interested parties present in the saleroom, from telephone bidders, and from absentee bidders who have left written bids in advance of the sale. The auctioneer may also execute bids on behalf of the consignor up to the amount of the reserve, but never above it. We assume no responsibility for failure to execute bids for any reason whatsoever.

### In Person

If you are planning to bid at auction for the first time, you will need to register at the reception desk in order to receive a numbered bid card. To place a bid, hold up your card so that the auctioneer can clearly see it. Decide on the maximum auction price that you wish to pay, exclusive of buyer's premium and tax, and continue bidding until your bid prevails or you reach your limit. If you are the successful bidder on a lot, the auctioneer will acknowledge your paddle number and bid amount.

### Absentee Bids

As a service to those wishing to place bids, we may at our discretion accept bids without charge in advance of auction online or in writing on bidding forms available from us. "Buy" bids will not be accepted; all bids must state the highest bid price the bidder is willing to pay. Our auction staff will try to bid just as you would, with the goal of obtaining the item at the lowest bid price possible. In the event identical bids are submitted, the earliest bid submitted will take precedence. Absentee bids shall be executed in competition with other absentee bids, any applicable reserve, and bids from other auction participants. A friend or agent may place bids on your behalf, provided that we have received your written authorization prior to the sale. Absentee bid forms are available in our catalogs, online at [www.bonhams.com/us](http://www.bonhams.com/us), at offsite auction locations and at our Los Angeles, San Francisco and New York galleries.

### By Telephone

We can arrange for you to bid by telephone. To arrange for a telephone bid, please contact our Client Services Department a minimum of 24 hours prior to the sale.

### Online

We offer live online bidding for most auctions and accept absentee bids online for all our auctions. Please visit [www.bonhams.com/us](http://www.bonhams.com/us) for details.

### Bid Increments

Bonhams generally uses the following increment multiples as bidding progresses:	
\$50-200.....	by \$10s
\$200-500.....	by \$20/50/80s
\$500-1,000.....	by \$50s
\$1,000-2,000.....	by \$100s
\$2,000-5,000.....	by \$200/500/800s
\$5,000-10,000.....	by \$500s
\$10,000-20,000.....	by \$1,000s
\$20,000-50,000.....	by \$2,000/5,000/8,000s
\$50,000-100,000.....	by \$5,000s
\$100,000-200,000.....	by \$10,000s
above \$200,000.....	at auctioneer's discretion

**The auctioneer may split or reject any bid at any time at his or her discretion as outlined in the Conditions of Sale.**

### Currency Converter

Solely for the convenience of bidders, a currency converter may be provided at Bonhams' auctions. The rates quoted for conversion of other currencies to U.S. Dollars are indications only and should not be relied upon by a bidder, and neither Bonhams nor its agents shall be responsible for any errors or omissions in the operation or accuracy of the currency converter.

### Buyer's Premium

A buyer's premium is added to the winning bid price of each individual lot purchased, at the rates set forth in the Conditions of Sale. The winning bid price plus the premium constitute the purchase price for the lot. Applicable sales taxes are computed based on this figure, and the total becomes your final purchase price.

Unless specifically illustrated and noted, fine art frames are not included in the estimate or purchase price. Bonhams accepts no liability for damage or loss to frames during storage or shipment.

All sales are final and subject to the Conditions of Sale found in our catalogs, on our website, and available at the reception desk.

### Payment

Payment may be made to Bonhams by cash, checks drawn on a U.S. bank, money order, wire transfer, or by Visa, MasterCard, American Express or Discover credit or charge card or debit card. All items must be paid for within 5 business days of the sale. Please note that payment by personal or business check may result in property not being released until purchase funds clear our bank. For payments sent by mail, please remit to Bonhams Client Services Department, 7601 W Sunset Boulevard, Los Angeles, California 90046.

### Sales Tax

Residents of states listed in Paragraph 1 of the Conditions of Sale must pay applicable sales tax. Other state or local taxes (or compensation use taxes) may apply. Sales tax will be automatically added to the invoice unless a valid resale number has been furnished or the property is shipped via common carrier to destinations outside the states listed in the Conditions of Sale. If you wish to use your resale license please contact Client Services for our form.

### Collection of Purchases

Scheduling an appointment and payment in full prior to arrival will facilitate the quick release of your property. If you are sending a third-party to collect, please provide details to our Client Services Department at [invoices.us@bonhams.com](mailto:invoices.us@bonhams.com) prior to your scheduled pickup or we will be unable to release your property.

For your convenience, pre-allocated 30-minute collection time slots are available Monday through Friday between 9am – 4:30pm. To schedule collection of purchases, please contact our Client Services Department on +1 (323) 850 7500.

### Shipping & Removal

Bonhams can accommodate shipping for certain items. If you wish to receive a Bonhams Shipping quote, please confirm as such at the time of registration. Carriers are not permitted to deliver to PO boxes.

International buyers are responsible for all import/export customs duties and taxes. An invoice stating the actual purchase price will accompany all international purchases.

### Handling and Storage Charges

**Storage charges of \$5 per lot, per day will begin accruing for any lots not collected within 14 calendar days of the auction.**

Bonhams reserve the right to remove uncollected sold lots to the warehouse of our choice at the buyer's risk and expense. Further transfer, handling, storage and full value protection fees will apply if move to a warehouse of our choice.

# Oversized (W) Lots – Collection and Storage

Please note that all lots marked with a **W** in the catalogue are oversized and subject to additional storage and shipping methods. All additional lots purchased with **W** lots are considered group lots and will be subject to the same terms as **W** lots.

We encourage you to collect **W** lots from Bonhams by **5pm** on **Friday, 15 January** to avoid accruing additional storage fees. If failed to collect by the above date, **W** lots and additional purchases may be transferred to offsite storage at Box Pack & Ship on **Monday, 18 January** at the purchaser's risk and expense. Please note, for sold lots removed to Box Pack & Ship there will be transfer and full value protection charges but no daily storage charges due for lots collected within 5 business days of the transfer.

The per-lot charges levied by Box Pack & Ship Services are as follows (plus any applicable sales tax):

**FURNITURE/LARGE OBJECTS**

Transfer ..... \$85  
Daily storage..... \$10  
Insurance (on Hammer + Premium + tax) 0.9%

**SMALL OBJECTS**

Transfer ..... \$42.50  
Daily storage..... \$5  
Insurance (on Hammer + Premium + tax) 0.9%

All purchases will be available for collection on **Tuesday, 19 January** from Box Pack & Ship. Collections appointments must be booked 24 hours in advance with Box Pack & Ship (subject to full payment of all outstanding amounts due to Bonhams and Box Pack & Ship).

For more information regarding storage, shipping, or collection from Box Pack & Ship please contact Box Pack & Ship directly at: **+1 323 432 2477** or **daniel@boxpackship.net**

Address:  
3800 S. Main Street  
Los Angeles, CA 90037

All amounts due to Bonhams and all charges due to Box Pack & Ship must be paid by the time of collection of the property. Payment may be made by cash, check, or credit card.

---

## Oversized lots

3	4	5	15	16	19	20	21	22	23	34	40
41	43	44	46	48	49	50	53	55	57	60	62
63	64	65	67	70	72	74	77	78	79	81	82
84	85	89	91	97	100	102	104	105	108	109	112
117	120	122	133	154	178						



# Auction Registration Form

(Attendee / Absentee / Online / Telephone Bidding)

Please circle your bidding method above.

<input type="checkbox"/>	<input type="checkbox"/>	<input type="checkbox"/>	<input type="checkbox"/>
--------------------------	--------------------------	--------------------------	--------------------------

Paddle number (for office use only)

**General Notice:** This sale will be conducted in accordance with Bonhams Conditions of Sale, and your bidding and buying at the sale will be governed by such terms and conditions. Please read the Conditions of Sale in conjunction with the Buyer's Guide relating to this sale and other published notices and terms relating to bidding.

Payment by personal or business check may result in your property not being released until purchase funds clear our bank. Checks must be drawn on a U.S. bank.

**Notice to Absentee Bidders:** In the table below, please provide details of the lots on which you wish to place bids at least 24 hours prior to the sale. Bids will be rounded down to the nearest increment. Please refer to the Buyer's Guide in the catalog for further information relating to instructions to Bonhams to execute absentee bids on your behalf. Bonhams will endeavor to execute bids on your behalf but will not be liable for any errors or non-executed bids.

**Notice to First Time Bidders:** New clients are requested to provide photographic proof of ID - passport, driving license, ID card, together with proof of address - utility bill, bank or credit card statement etc. Corporate clients should also provide a copy of their articles of association / company registration documents, together with a letter authorizing the individual to bid on the company's behalf. Failure to provide this may result in your bids not being processed. For higher value lots you may also be asked to provide a bankers reference.

**Notice to online bidders:** If you have forgotten your username and password for [www.bonhams.com](http://www.bonhams.com), please contact Client Services.

## If successful

I will collect the purchases myself ☐  
Please contact me with a shipping quote (if applicable) ☐  
I will arrange a third party to collect my purchase(s) ☐

## Please email the completed Registration Form and request information to:

Bonhams Client Services Department  
7601 W. Sunset Blvd  
Los Angeles, California 90046  
Tel +1 (323) 850 7500  
[bids.us@bonhams.com](mailto:bids.us@bonhams.com)

# Bonhams

Sale title: Modern Design   Art	Sale date: January 13, 2021
Sale no. 26712	Sale venue: Los Angeles
<b>General Bid Increments:</b> \$10 - 200 .....by 10s \$200 - 500 .....by 20 / 50 / 80s \$500 - 1,000 .....by 50s \$1,000 - 2,000 .....by 100s \$2,000 - 5,000 .....by 200 / 500 / 800s \$5,000 - 10,000 .....by 500s \$10,000 - 20,000 .....by 1,000s \$20,000 - 50,000 .....by 2,000 / 5,000 / 8,000s \$50,000 - 100,000 .....by 5,000s \$100,000 - 200,000 .....by 10,000s above \$200,000 .....at the auctioneer's discretion The auctioneer has discretion to split any bid at any time.	
Customer Number	Title
First Name	Last Name
Company name (to be invoiced if applicable)	
Address	
City	County / State
Post / Zip code	Country
Telephone mobile	Telephone daytime
Telephone evening	
Telephone bidders: indicate primary and secondary contact numbers by writing ① or ② next to the telephone number.	
E-mail (in capitals) _____ By providing your email address above, you authorize Bonhams to send you marketing materials and news concerning Bonhams and partner organizations. Bonhams does not sell or trade email addresses.	
I am registering to bid as a private client <input type="checkbox"/>	I am registering to bid as a trade client <input type="checkbox"/>
Resale: please enter your resale license number here _____ We may contact you for additional information.	

SHIPPING	
Shipping Address (if different than above):	
Address: _____	Country: _____
City: _____	Post/ZIP code: _____

Please note that all telephone calls are recorded.

Type of bid (A-Absentee, T-Telephone)	Lot no.	Brief description (In the event of any discrepancy, lot number and not lot description will govern.) If you are bidding online there is no need to complete this section.	MAX bid in US\$ (excluding premium and applicable tax) Emergency bid for telephone bidders only*

You instruct us to execute each absentee bid up to the corresponding bid amount indicated above.

\* Emergency Bid: A maximum bid (exclusive of Buyer's Premium and tax) to be executed by Bonhams only if we are unable to contact you by telephone or should the connection be lost during bidding.

BY SIGNING THIS FORM YOU AGREE THAT YOU HAVE READ AND UNDERSTAND OUR CONDITIONS OF SALE AND SHALL BE LEGALLY BOUND BY THEM, AND YOU AGREE TO PAY THE BUYER'S PREMIUM, ANY APPLICABLE TAXES, AND ANY OTHER CHARGES MENTIONED IN THE BUYER'S GUIDE OR CONDITIONS OF SALE. THIS AFFECTS YOUR LEGAL RIGHTS.

Your signature:

Date:

Index

A

Aronson, Ben	123
Arp, Jean	68
Asoma, Tadashi	103

B

Baccarat	27
Barbini, Alfredo	143
Barovier, Ercole	147, 148
Baughman, Milo	50
Beasley, Bruce	109
Belvoir, Paul	69
Benson, Trudy	47
Bianconi, Fulvio	139, 140, 141
Bitters, Stan	136
Blow, Richard	128
Bouraine, Marcel	39
Brasseur, Jacques Duval	44
Breiling, Andrea Marie	133
Buck, Claude Charles	18
Burnham, Daniel	3

C

Cahoon, Ralph	10
Calder, Alexander	78
Chávez Morado, José	87, 88
Chihuly, Dale	177, 178
Coates, Nigel	158
Coronel, Raul	71
Costa, Olga	42
Da Ros, Antonio	145
Dachsel, Paul	12

D

de Santillana, Ludovico Diaz	142
De Wolfe, Elsie	41
Dickinson, John	60
Duquette, Tony	56

E

Eames, Charles & Ray	93
----------------------	----

F

Fischer, Lothar	107
Follot, Paul	40
Fuga, Anzolo	150
French	11

G

Gallé, Émile	29
Gehry, Frank	122
Gong, Greg	86
Graves, Michael	98, 99, 100
Gross, Chaim	45
Goyard	13
Guillerme et Chambron	70

H

Hamada, Shoji	131, 132
Hartman, Cedric	57
Hoffmann, Josef	21, 22, 23
Houston, Brenda	113, 114

I

Irvin, Kevin	120
--------------	-----

J

Jencks, Charles	102
Jensen, Georg	61
Jensen, Steve	173
Jones, Allen	53
Judd, Donald	97

K

Kenna, Michael	58, 130
Kestral, Steve	110, 111

L

Lachenal, Edmond	28
Lalique, René	31, 32
Lee, Cliff	127
Littlejohn, Victoria	112
Loetz	25, 26
Loewy, Raymond	83
Louis Vuitton	14
Lukens, Glen	76

M

Manship, Paul Howard	38
Mares, Jan	168
Marquis, Richard	171, 172
McCobb, Paul	72, 74
McQueen, John	119
Morris, William C.	175, 176
Moulthrop, Philip	118
Mullican, Matt	135

N

Nason, Ermanno	151, 152, 153, 155, 156
Natkin, Robert	154
Nauny, Clément	33
Nelson, George	77
Newcomb College Pottery	17
Newman, Arnold	92, 94, 95
Nordio, Massimo	163

O

Orr, Eric	108
-----------	-----

P

Pereira, Irene Rice	159, 165
Perkins, Flo	162
Perriand, Charlotte	80
Pevey, Dustin	104
Poillerat, Gilbert	43
Preiss, Ferdinand	36

R

Redmile, Anthony	66
Rhode, Robin	106
Rizzo, Willy	64, 65
Robsjohn-Gibbings, T.H.	46, 49
Roehrig, Frederick L.	9
Romain de Tirtoff, Erté	24
Roycroft	15, 19, 20
Rudich, Richard	52

S

Sain, Paul Etienne	34
Sauze, Max	51
Seguso, Archimede	144, 146
Sheridan Smith, Matt	62
Shire, Peter	138
Shulman, Julius	96
Stickley, Gustav	4, 16
Stinsmuehlen-Amend, Susan	164
Sugimoto, Hiroshi	137
Swallow, Ricky	101

T

Tackett, LaGardo	75
Tagliapietra, Lino	169
Takaezu, Toshiko	124, 125, 126
Tarabella, Benito Viliano	59
Tatsuzo, Shimaoka	129
Tiffany Studios	1, 2, 6, 7

U

Useche, Pedro	85
---------------	----

V

Venard, Claude	73
Venini, Paolo	149
Vitali, Massimo	121

W

Walter, Layla	166
Wegner, Hans J.	79
Wegner, Peter	63, 81
Weiser, Kurt	170
Woodman, Betty	134
Wright, Frank Lloyd	91

Y

Yamano, Hiroshi	174
Yeager, Ira	54
Yellin, Isabel	48

Z

Zalszupin, Jorge	89
Zúñiga, Francisco	8
Zsolnay	30



三木



**Bonhams**  
7601 W. Sunset Boulevard  
Los Angeles, CA 90046

---

+1 323 850 7500  
bonhams.com

**AUCTIONEERS SINCE 1793**